

LOCATION OF THE APPLICATION SITE

APPLICATION SITE AREA : 2,486 m² (ABOUT)

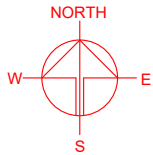
VEHICULAR ACCESS

ACCESSIBLE FROM SHUI MEI ROAD VIA A LOCAL ACCESS

APPLICATION SITE

ACCESSIBLE FROM SHUI MEI ROAD VIA A LOCAL ACCESS

*SITE BOUNDARY FOR IDENTIFICATION PURPOSE ONLY



PLANNING CONSULTANT



PROJECT

PROPOSED WAREHOUSE (EXCLUDING DANGEROUS GOODS GODOWN) WITH ANCILLARY FACILITIES AND ASSOCIATED FILLING OF LAND FOR A PERIOD OF 3 YEARS

SITE LOCATION

LOT 1435 (PART) IN D.D. 107, KAM TIN, YUEN LONG, NEW TERRITORIES

SCALE

1 : 4000 @ A4

DRAWN BY

MN

DATE

19.3.2025

REVISED BY

DATE

APPROVED BY

DATE

LEGEND



APPLICATION SITE

DWG. TITLE

LOCATION PLAN

DWG NO.

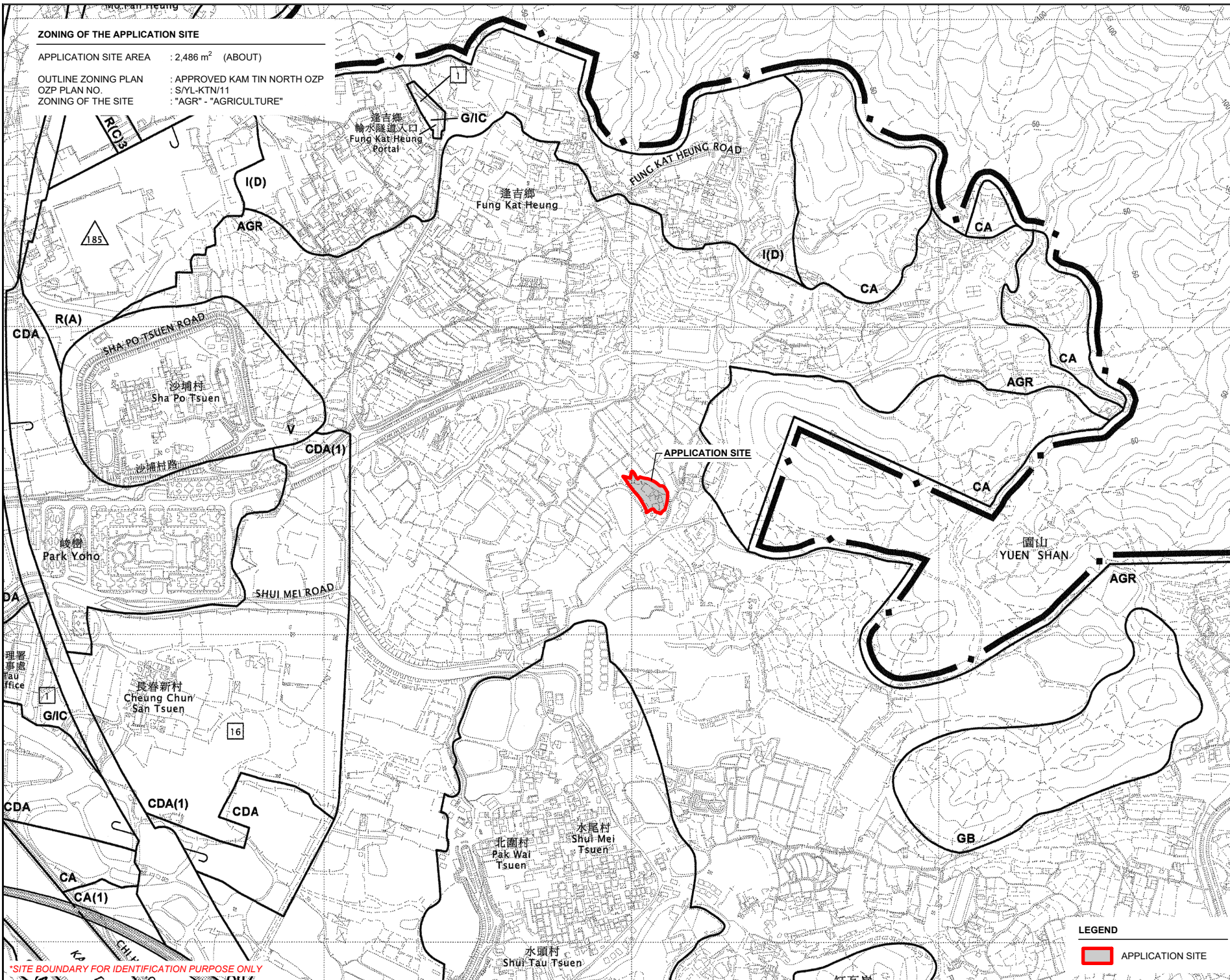
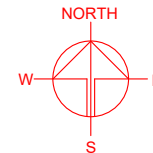
PLAN 1

VER.

001

ZONING OF THE APPLICATION SITE

APPLICATION SITE AREA : 2,486 m² (ABOUT)
 OUTLINE ZONING PLAN : APPROVED KAM TIN NORTH OZP
 OZP PLAN NO. : S/YL-KTN/11
 ZONING OF THE SITE : "AGR" - "AGRICULTURE"



*SITE BOUNDARY FOR IDENTIFICATION PURPOSE ONLY

PLANNING CONSULTANT



PROJECT

PROPOSED WAREHOUSE (EXCLUDING DANGEROUS GOODS GODOWN) WITH ANCILLARY FACILITIES AND ASSOCIATED FILLING OF LAND FOR A PERIOD OF 3 YEARS

SITE LOCATION

LOT 1435 (PART) IN D.D. 107, KAM TIN, YUEN LONG, NEW TERRITORIES

SCALE

1 : 8000 @ A4

DRAWN BY

MN

DATE

19.3.2025

REVISED BY

DATE

APPROVED BY

DATE

DWG. TITLE

ZONING OF THE SITE

DWG NO.

PLAN 2

VER.

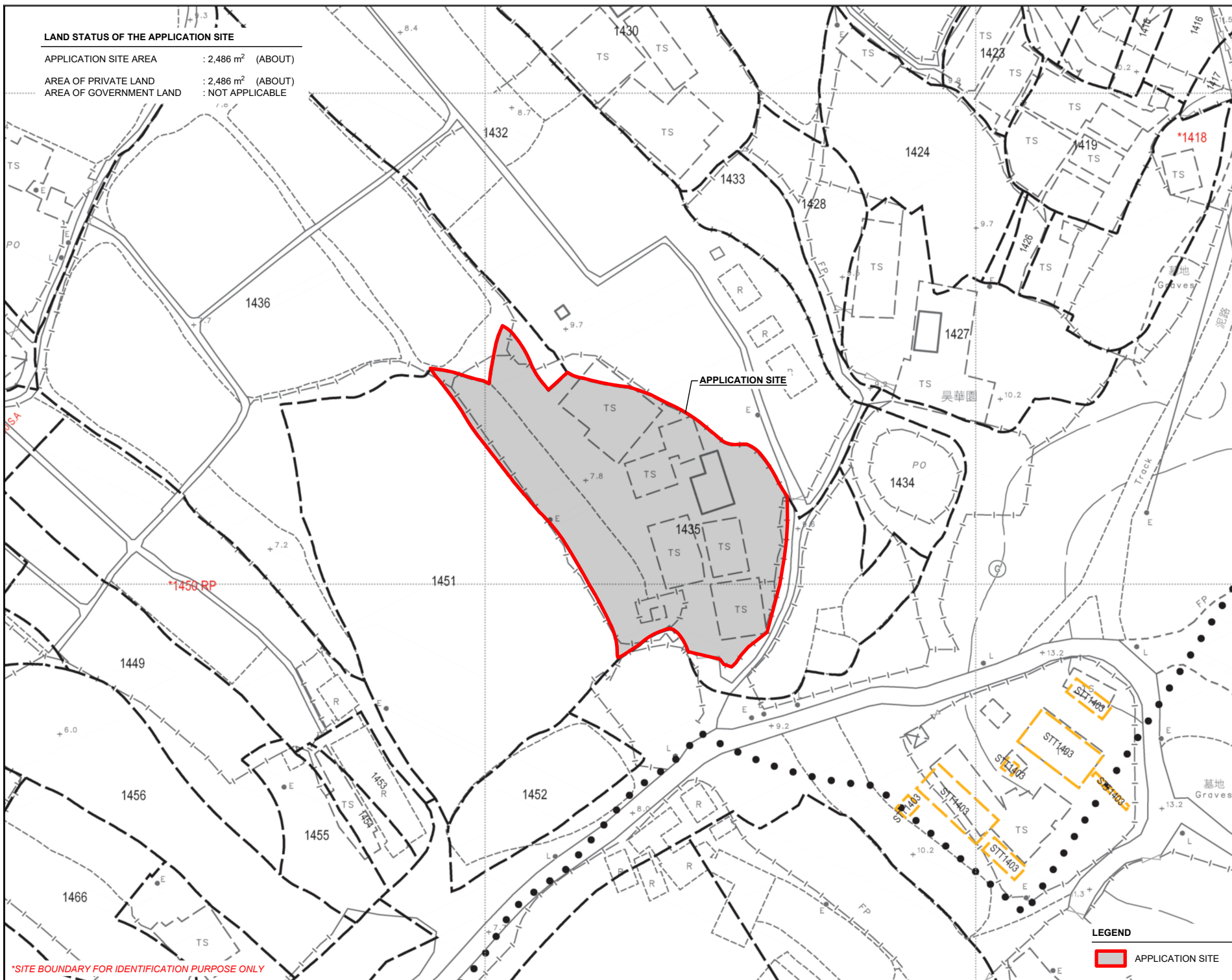
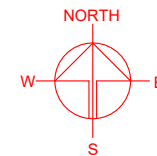
001

LEGEND

APPLICATION SITE

LAND STATUS OF THE APPLICATION SITE

APPLICATION SITE AREA : 2,486 m² (ABOUT)
 AREA OF PRIVATE LAND : 2,486 m² (ABOUT)
 AREA OF GOVERNMENT LAND : NOT APPLICABLE



*SITE BOUNDARY FOR IDENTIFICATION PURPOSE ONLY

LEGEND

APPLICATION SITE

PLANNING CONSULTANT



PROJECT

PROPOSED WAREHOUSE (EXCLUDING DANGEROUS GOODS GODOWN) WITH ANCILLARY FACILITIES AND ASSOCIATED FILLING OF LAND FOR A PERIOD OF 3 YEARS

SITE LOCATION

LOT 1435 (PART) IN D.D. 107, KAM TIN, YUEN LONG, NEW TERRITORIES

SCALE

1: 1000 @ A4

DRAWN BY

MN

DATE

19.3.2025

REVISED BY

DATE

APPROVED BY

DATE

DWG. TITLE

LAND STATUS OF THE SITE

DWG NO.

PLAN 3

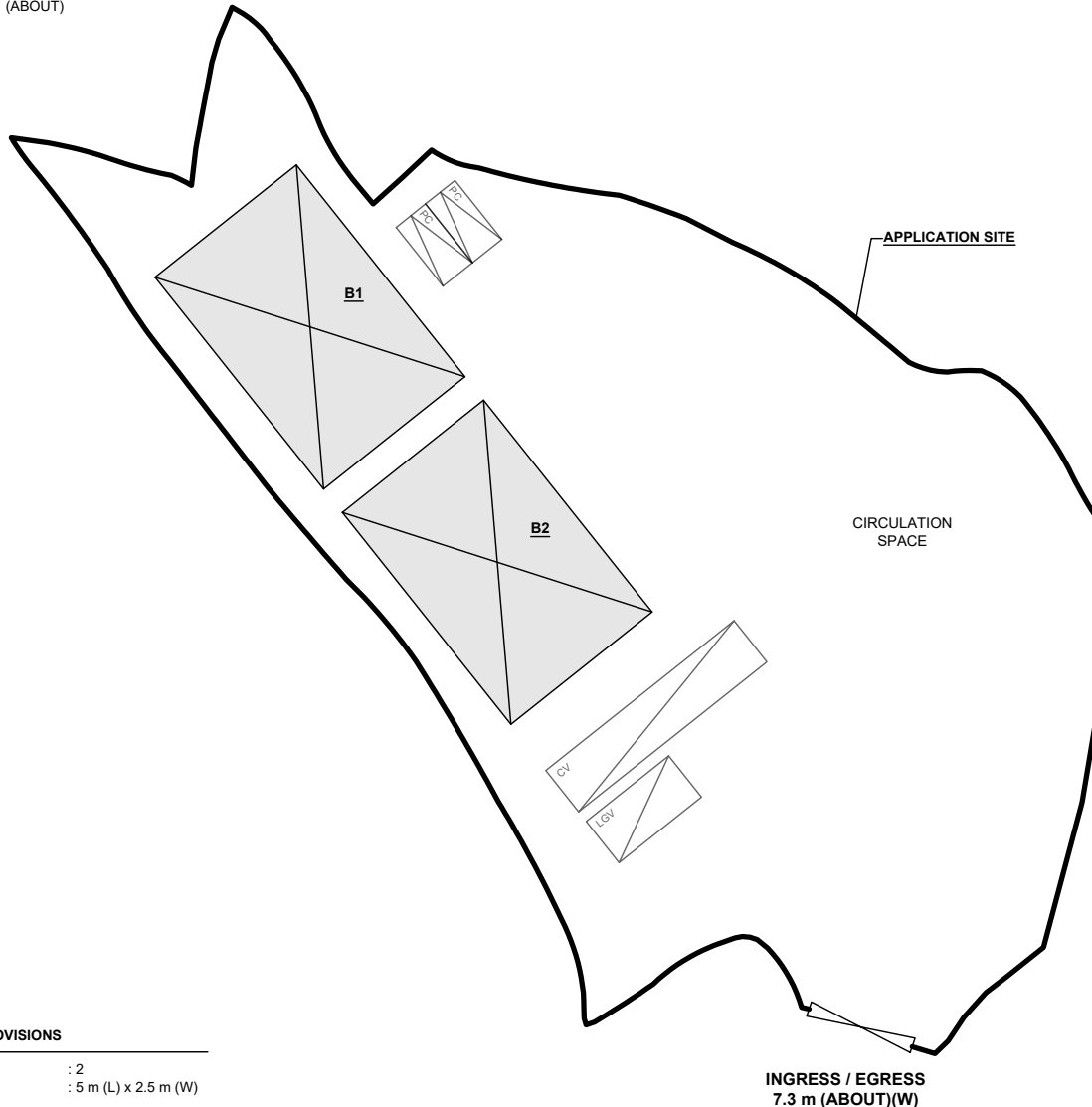
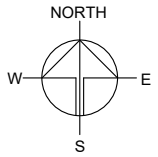
VER.

001

DEVELOPMENT PARAMETERS

APPLICATION SITE AREA	: 2,486 m ²	(ABOUT)
COVERED AREA	: 432 m ²	(ABOUT)
UNCOVERED AREA	: 2,054 m ²	(ABOUT)
PLOT RATIO	: 0.17	(ABOUT)
SITE COVERAGE	: 17 %	(ABOUT)
NO. OF STRUCTURE	: 2	
DOMESTIC GFA	: NOT APPLICABLE	
NON-DOMESTIC GFA	: 432 m ²	(ABOUT)
TOTAL GFA	: 432 m ²	(ABOUT)
BUILDING HEIGHT	: 6 m (ABOUT)	
NO. OF STOREY	: 1	

STRUCTURE	USE	COVERED AREA	GROSS FLOOR AREA	BUILDING HEIGHT
B1	WAREHOUSE (EXCLUDING D.G.G.) SITE OFFICE, WASHROOM	216 m ² (ABOUT)	216 m ² (ABOUT)	6 m (ABOUT)(1-STOREY)
B2	WAREHOUSE (EXCLUDING D.G.G.)	216 m ² (ABOUT)	216 m ² (ABOUT)	6 m (ABOUT)(1-STOREY)
TOTAL		432 m ² (ABOUT)	432 m ² (ABOUT)	
*D. G. G. - DANGEROUS GOODS GODOWN				



PARKING AND LOADING / UNLOADING PROVISIONS

NO. OF PRIVATE CAR PARKING SPACE	: 2
DIMENSION OF PARKING SPACE	: 5 m (L) x 2.5 m (W)
NO. OF L/UL SPACE FOR LIGHT GOODS VEHICLE	: 1
DIMENSION OF L/UL SPACE	: 7 m (L) x 3.5 m (W)
NO. OF L/UL SPACE FOR CONTAINER VEHICLE	: 1
DIMENSION OF L/UL SPACE	: 11 m (L) x 3.5 m (W)

LEGEND

	APPLICATION SITE
	STRUCTURE
	PARKING SPACE (PC)
	LOADING / UNLOADING SPACE (LGV)
	LOADING / UNLOADING SPACE (CV)
	INGRESS / EGRESS

PLANNING CONSULTANT



PROJECT

PROPOSED WAREHOUSE (EXCLUDING DANGEROUS GOODS GODOWN) WITH ANCILLARY FACILITIES AND ASSOCIATED FILLING OF LAND FOR A PERIOD OF 3 YEARS

SITE LOCATION

LOT 1435 (PART) IN D.D. 107, KAM TIN, YUEN LONG, NEW TERRITORIES

SCALE

1 : 500 @ A4

DRAWN BY	DATE
MN	19.3.2025
REVISED BY	DATE
APPROVED BY	DATE

DWG. TITLE

LAYOUT PLAN


DWG NO.	VER.
PLAN 4	001

APPLICATION SITE BEFORE FILLING OF LAND

APPLICATION SITE AREA : 2,486 m² (ABOUT)
SITE LEVELS BEFORE FILLING OF LAND : +7.8 mPD (ABOUT)



LEGEND

	APPLICATION SITE
+7.8	SITE LEVEL

SITE LEVELS ARE FOR REFERENCE ONLY.



EXISTING FILLING OF LAND AREA

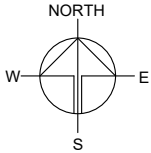
APPLICATION SITE AREA : 2,486 m² (ABOUT)
COVERED BY STRUCTURE : 432 m² (ABOUT)

PROPOSED FILLED AREA : 2,486 m² (ABOUT)
DEPTH OF LAND FILLING : NOT MORE THAN 0.2 m
PROPOSED SITE LEVELS : +8.0 mPD (ABOUT)
MATERIAL OF LAND FILLING : CONCRETE
USE : SITE FORMATION OF STRUCTURES, AND CIRCULATION SPACE



LEGEND

	APPLICATION SITE
	LAND FILLING AREA
+8.0	SITE LEVEL



PLANNING CONSULTANT



PROJECT

PROPOSED WAREHOUSE (EXCLUDING DANGEROUS GOODS GODOWN) WITH ANCILLARY FACILITIES AND ASSOCIATED FILLING OF LAND FOR A PERIOD OF 3 YEARS

SITE LOCATION

LOT 1435 (PART) IN D.D. 107, KAM TIN, YUEN LONG, NEW TERRITORIES

SCALE

1 : 700 @ A4

DRAWN BY	DATE
MN	19.3.2025
REVISED BY	DATE
APPROVED BY	DATE

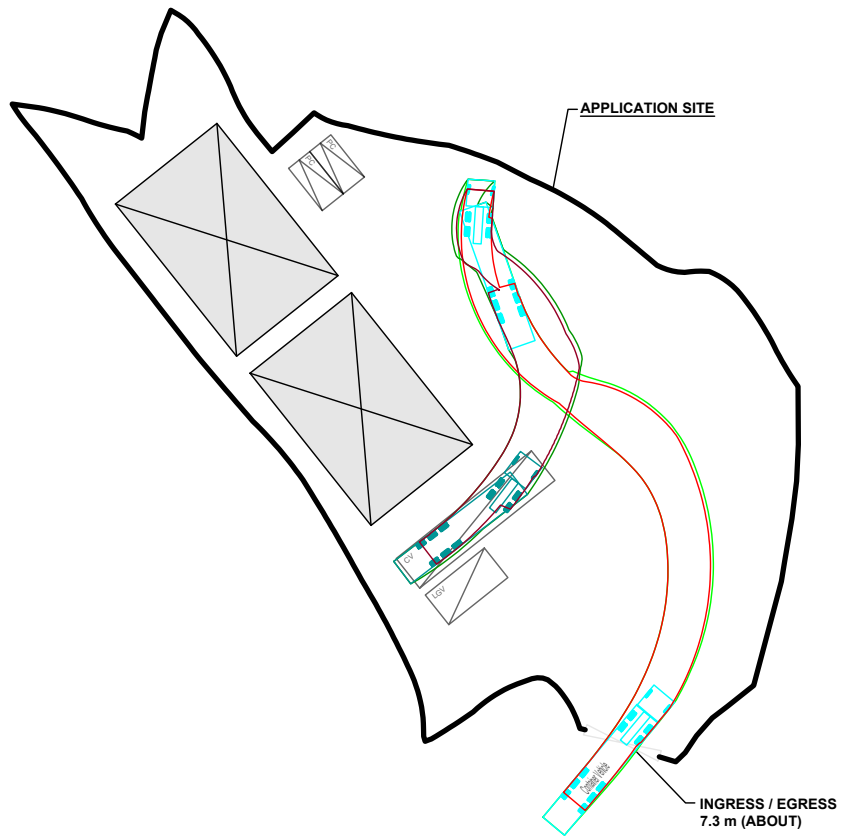
DWG. TITLE
FILLING OF LAND

DWG NO. PLAN 5	VER. 001
-------------------	-------------

SWEPT PATH ANALYSIS

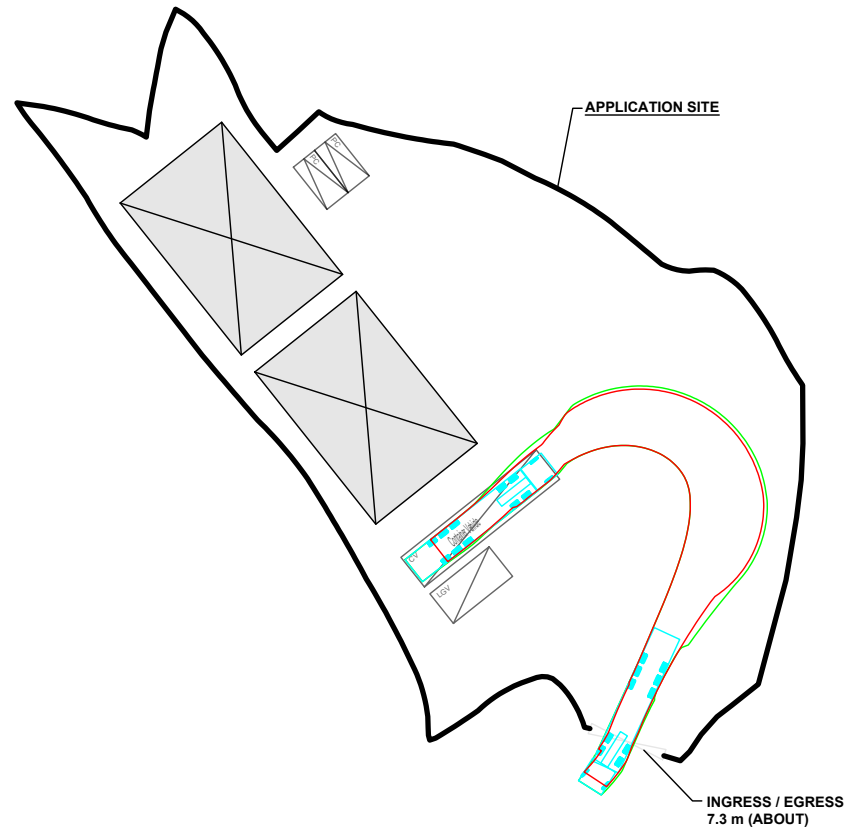
TYPE OF VEHICLE : MEDIUM GOODS VEHICLE
 DIMENSION OF VEHICLE : 2.5 m (W) X 11 m (L)

SWEPT PATHS GENERATED BY AUTODESK VEHICLE TRACKING



FROM THE LOCAL ACCESS TO
 THE APPLICATION SITE

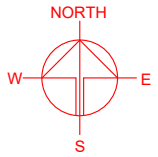
*SITE BOUNDARY FOR IDENTIFICATION PURPOSE ONLY



FROM THE APPLICATION SITE TO
 THE LOCAL ACCESS

LEGEND

- APPLICATION SITE
- STRUCTURE
- PARKING SPACE (PC)
- LUL SPACE (LGV)
- LUL SPACE (CV)
- INGRESS / EGRESS
- CONTAINER VEHICLE
- SWEPT PATH OF VEHICLE



PLANNING CONSULTANT



PROJECT

PROPOSED TEMPORARY
 WAREHOUSE (EXCLUDING
 DANGEROUS GOODS GODOWN)
 WITH ANCILLARY FACILITIES
 AND ASSOCIATED FILLING OF
 LAND FOR A PERIOD OF 3
 YEARS

SITE LOCATION

LOT 1435 (PART) IN D.D. 107,
 KAM TIN, YUEN LONG, NEW
 TERRITORIES

SCALE

1 : 700 @ A4

DRAWN BY

MN

DATE

19.3.2025

CHECKED BY

DATE

APPROVED BY

DATE

DWG. TITLE

SWEPT PATH ANALYSIS

DWG NO.

PLAN 6

VER.

001