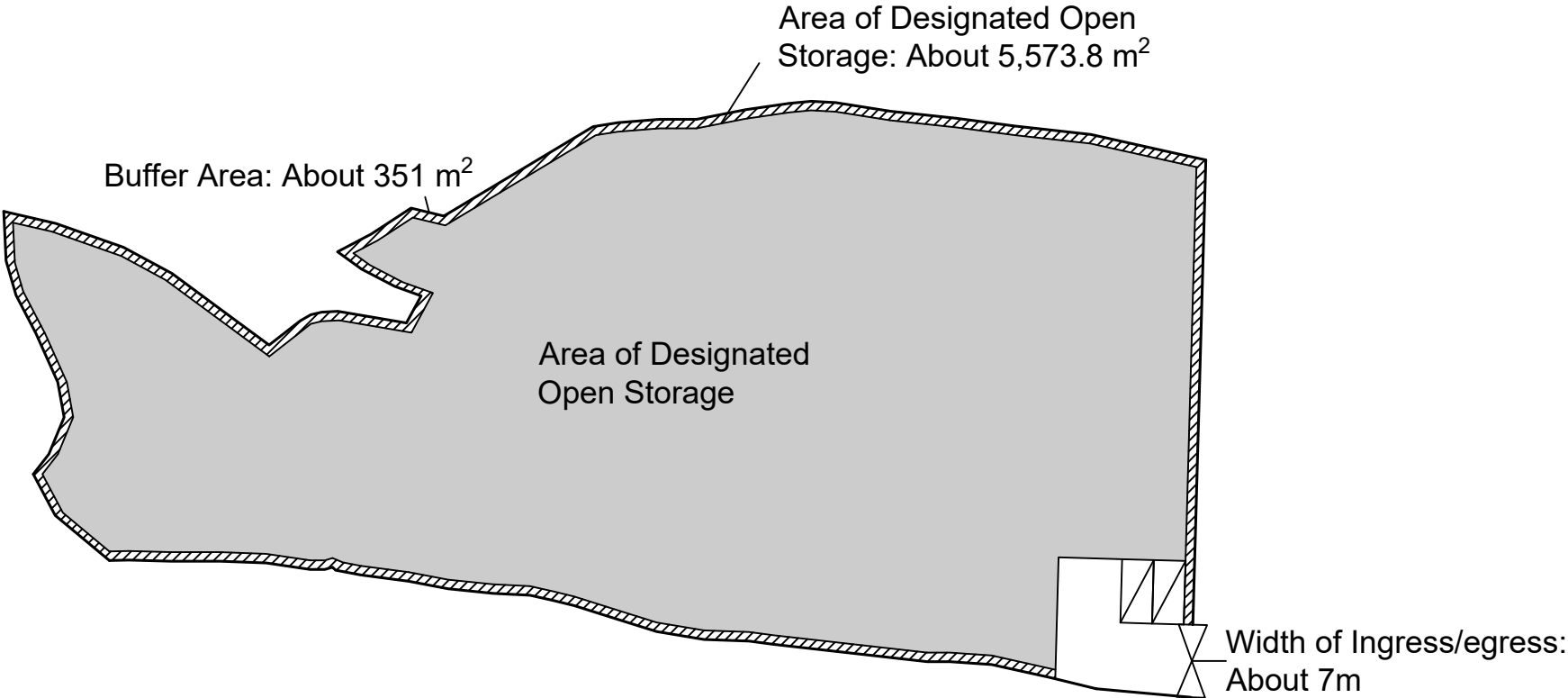
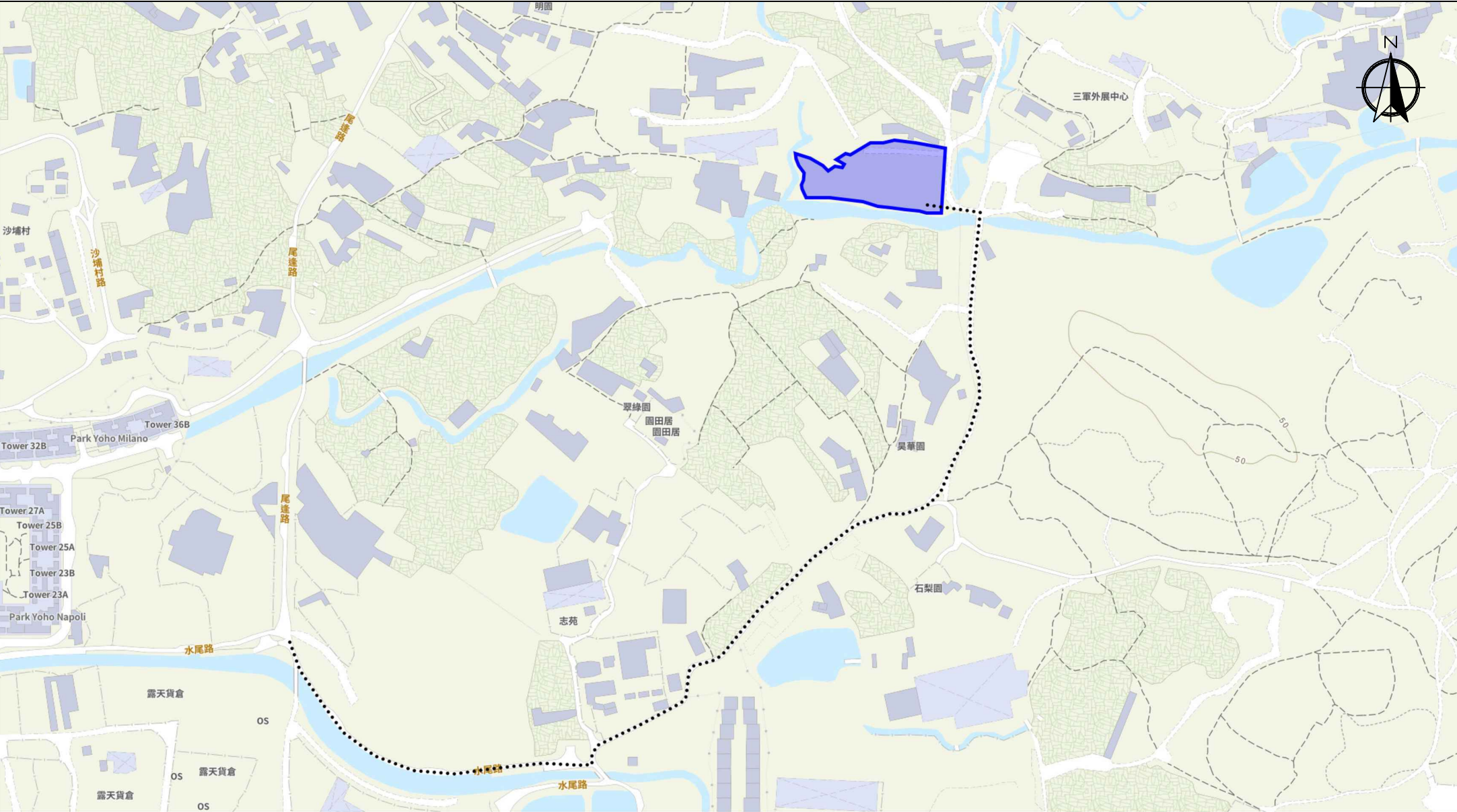



Proposed Development Details			
	Open Storage Area	About 5,573.8 m ²	
	Buffer Area	About 351 m ²	
	LGV L/UL Space	7m x 3.5m	Unit(s): 2



Appendix 2 Proposed Layout Plan	Location: D.D. 107 Lot 1231 (Part), 1234 (Part), 1235, 1236, 1237 (Part), 1238 (Part), 1240 (Part) OZP: S/YL-KTN/11 District: Kam Tin North Zoning: Agriculture	<div> <div> 擬議臨時露天存放 及相關填土及填塘工程(為期3年) </div> <div> Proposed Temporary Open Storage and associated Filling of Land and Pond for a Period of 3 Years </div> </div>	Legend: <div> <div> Ingress / egress </div> <div> Open Storage Area </div> <div> LGV L/UL Space </div> </div>	Drawing No.: 2-01
				For Identification Only Date: 03/12/2025



 Scale: Undefined @A4

Captured from map.gov.hk on 3rd December 2025

<div>Appendix 3</div> <div>Existing Vehicular Access</div>	<div>Location:</div> <div>D.D. 107 Lot 1231 (Part), 1234 (Part), 1235, 1236, 1237 (Part), 1238 (Part) and 1240 (Part)</div> <div>OZP: S/YL-KTN/11</div> <div>District: Kam Tin North</div> <div>Zoning: Agriculture</div>	<div>Proposed Temporary Open Storage and associated Filling of Land and Pond for a Period of 3 Years</div>	<div>Width of Shui Mei Road: 3-6m (About) with passing space</div> <div>Map Legend:</div> <div><div>●●●●●</div> Road Path</div> <div><div>—</div> Site Boundary</div>	<div>Drawing No.:</div> <div>3-1</div>
				<div>For Identification Only</div> <div>Date: 03/12/2025</div>

Proposed Filling of Land and Pond Perimeter

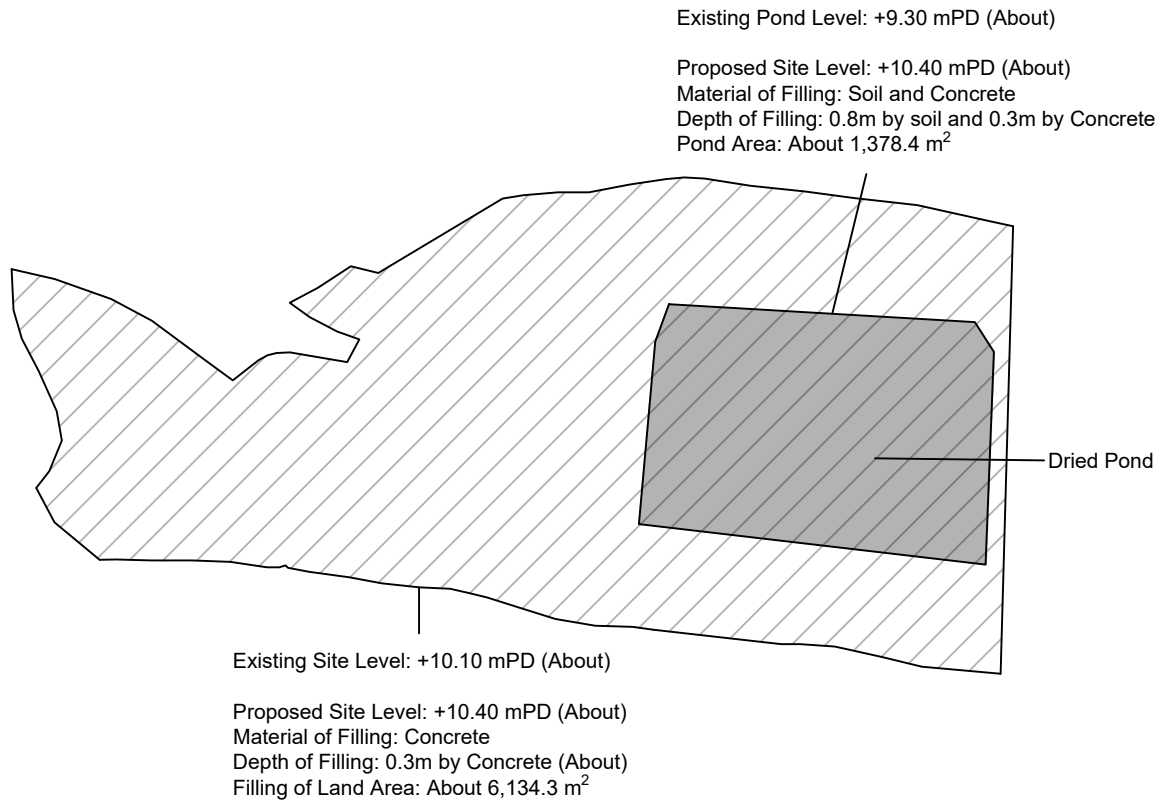
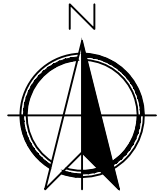
Application Site Area: 6,134.3 m²(About)

Proposed Filling of Pond



Proposed Pond Filling: 1,378.4 m² (About)
Depth of Pond Filling: About 0.8 m
Existing Pond Levels: +9.30 mPD (About)
Proposed Levels: +10.10 mPD (About)
Material of Filling: Soil

Proposed Filling of Land

Proposed Land Filling: 6,134.3 m² (About)
Depth of Land Filling: About 0.3 m
Existing Site Levels: +10.10 mPD (About)
Proposed Site Levels: +10.40 mPD (About)
Material of Filling: Concrete
Proposed Use: Site Formation, Open Storage Area, Loading / Unloading Space and Circulation Space



Legend:

-  Proposed Filling of Land Area
-  Proposed Filling of Pond Area

Appendix 4

Location: DD 107 Lot 1231 (Part),
1234 (Part), 1235, 1236
1237 (Part), 1238 (Part)
and 1240 (Part)
OZP: S/YL-KTN/11
District: Kam Tin North
Zoning: Agriculture
Date: 3 December 2025

Filling of Land and Pond Area

擬議臨時露天存放連附屬設施
及相關填土工程(為期3年)

Proposed Temporary Open Storage with Ancillary
Facilities and associated Filling of Land
for a Period of 3 Years

SCALE

1:250

@A4

For Identification Only

Drawing No.:

4-01