

## **List of Plans**

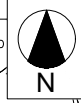
<b>Plan 1</b>	Layout Plan
<b>Plan 2</b>	Location Plan
<b>Plan 3</b>	Land Status Plan
<b>Plan 4</b>	Land Filling Area Plan
<b>Plan 5</b>	Swept Path Analysis



**LOCATION OF THE APPLICATION SITE**

APPLICATION SITE AREA : 6,543 m<sup>2</sup> (ABOUT)

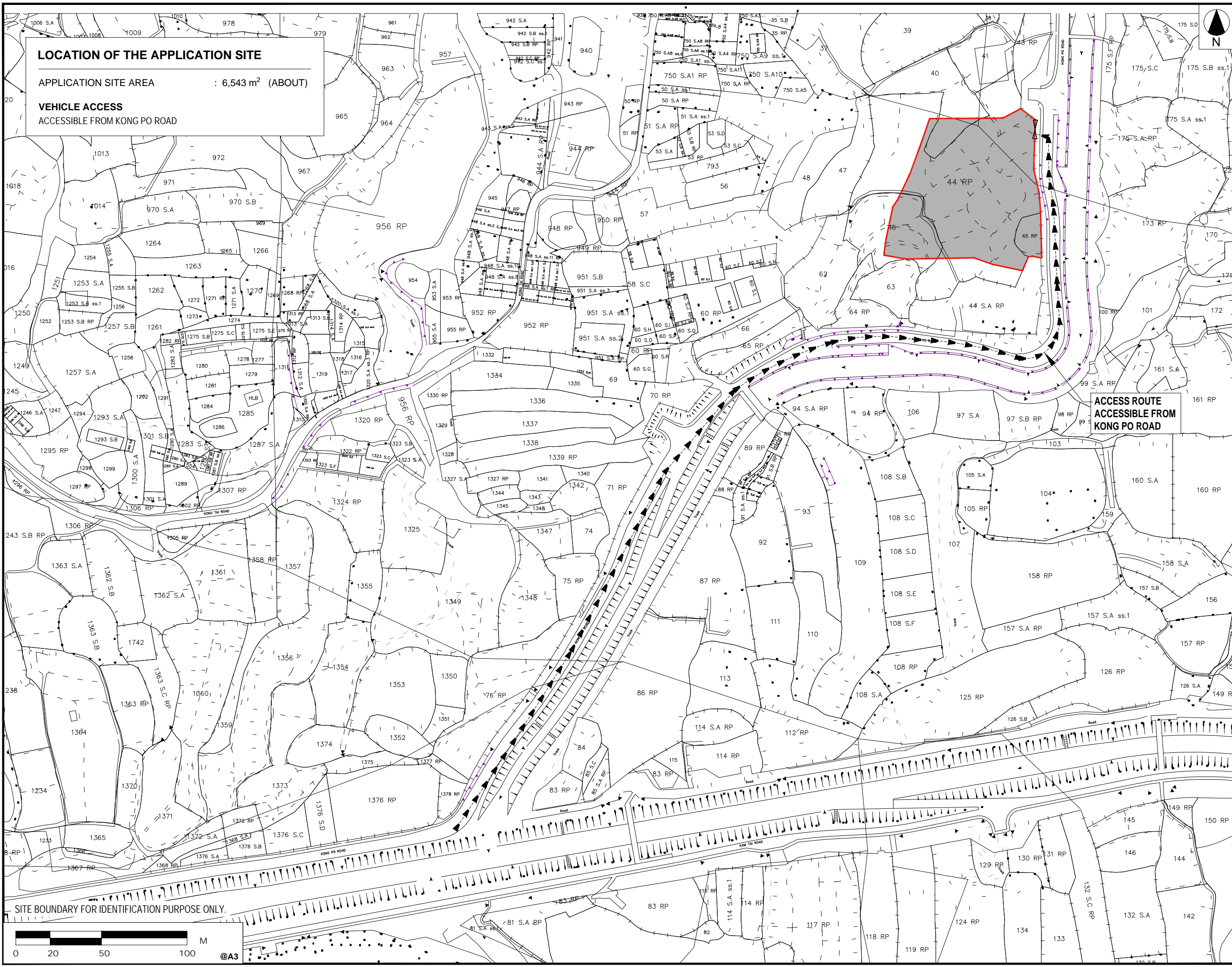
VEHICLE ACCESS  
ACCESSIBLE FROM KONG PO ROAD



• ALL DIMENSIONS ARE IN MILLIMETER EXCEPT OTHERWISE NOTED  
• DO NOT SCALE DRAWING

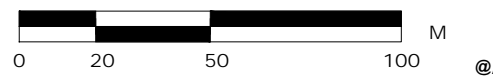
**LEGEND**

- APPLICATION SITE
- ACCESS ROUTE



**ACCESS ROUTE  
ACCESSIBLE FROM  
KONG PO ROAD**

SITE BOUNDARY FOR IDENTIFICATION PURPOSE ONLY.



LAYOUT PLAN		13 FEB 2026
REVISION		
drawn	CY	DATE: 30 DEC 2025
checked	-	DATE: -
approved	-	DATE: -
contract no. -		
project no. -		
TITLE : PROPOSED TEMPORARY WAREHOUSE (EXCLUDING DANGEROUS GOODS GODOWN) WITH ANCILLARY FACILITIES AND ASSOCIATED FILLING OF LAND FOR A PERIOD OF 3 YEARS		
SITE LOCATION : LOTS 40 (PART), 44 RP (PART), 45 RP AND 46 (PART) IN D.D. 110, TAI KONG PO, YUEN LONG, NEW TERRITORIES		
drawing title.		
LOCATION PLAN		
drawing no.	rev.	scale
PLAN 2	-	N.T.S.

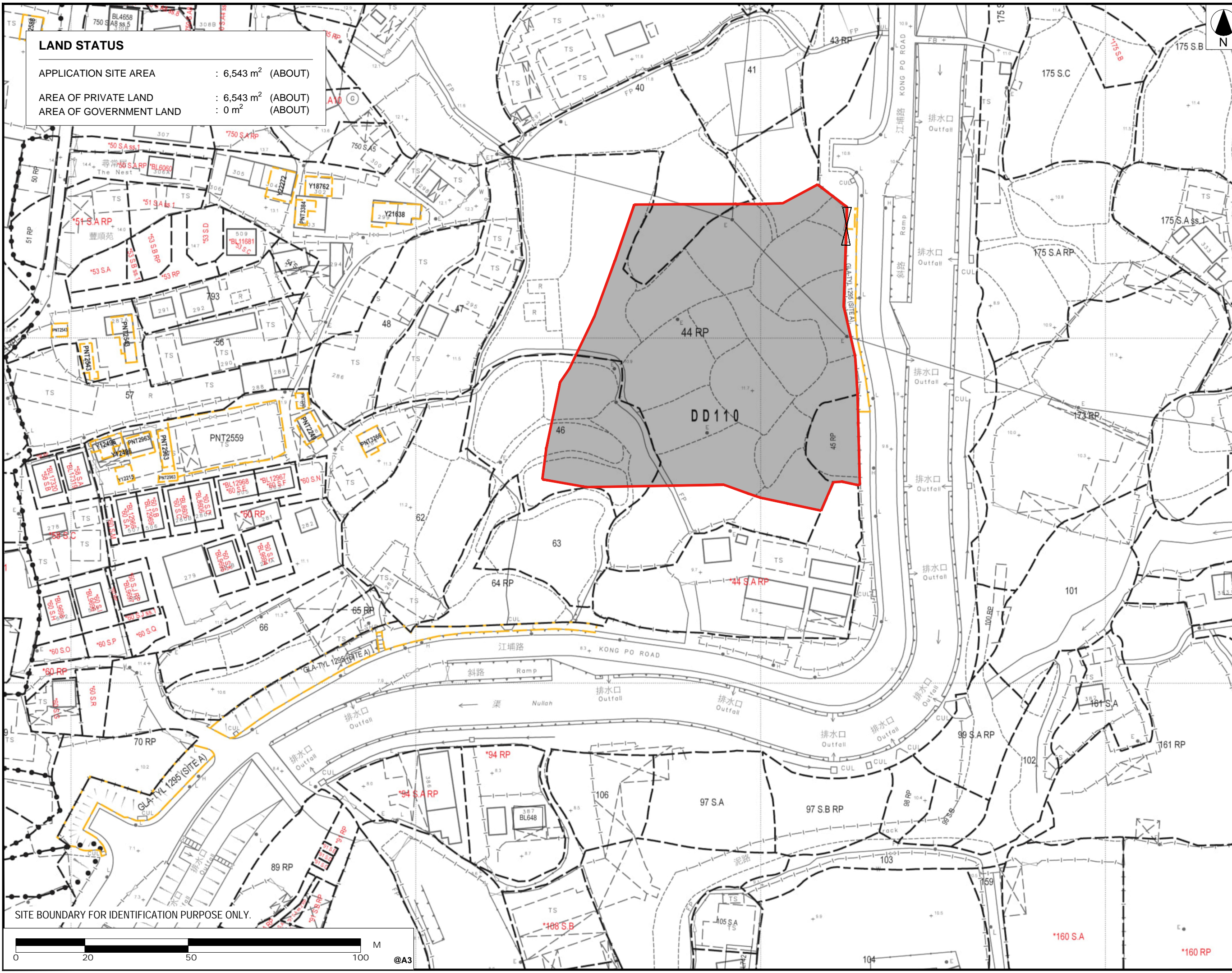
**LAND STATUS**

APPLICATION SITE AREA : 6,543 m<sup>2</sup> (ABOUT)  
 AREA OF PRIVATE LAND : 6,543 m<sup>2</sup> (ABOUT)  
 AREA OF GOVERNMENT LAND : 0 m<sup>2</sup> (ABOUT)

• ALL DIMENSIONS ARE IN MILLIMETER EXCEPT OTHERWISE NOTED  
 • DO NOT SCALE DRAWING

**LEGEND**

- APPLICATION SITE
- PRIVATE LAND



SITE BOUNDARY FOR IDENTIFICATION PURPOSE ONLY.

LAYOUT PLAN		13 FEB 2026
REVISION		
drawn	CY	DATE: 30 DEC 2025
checked	-	DATE: -
approved	-	DATE: -
contract no. -		
project no. -		
TITLE :		
PROPOSED TEMPORARY WAREHOUSE (EXCLUDING DANGEROUS GOODS GODOWN) WITH ANCILLARY FACILITIES AND ASSOCIATED FILLING OF LAND FOR A PERIOD OF 3 YEARS		
SITE LOCATION :		
LOTS 40 (PART), 44 RP (PART), 45 RP AND 46 (PART) IN D.D. 110, TAI KONG PO, YUEN LONG, NEW TERRITORIES		
drawing title.		
LAND STATUS PLAN		
drawing no.	rev.	scale
PLAN 3	-	N.T.S.



