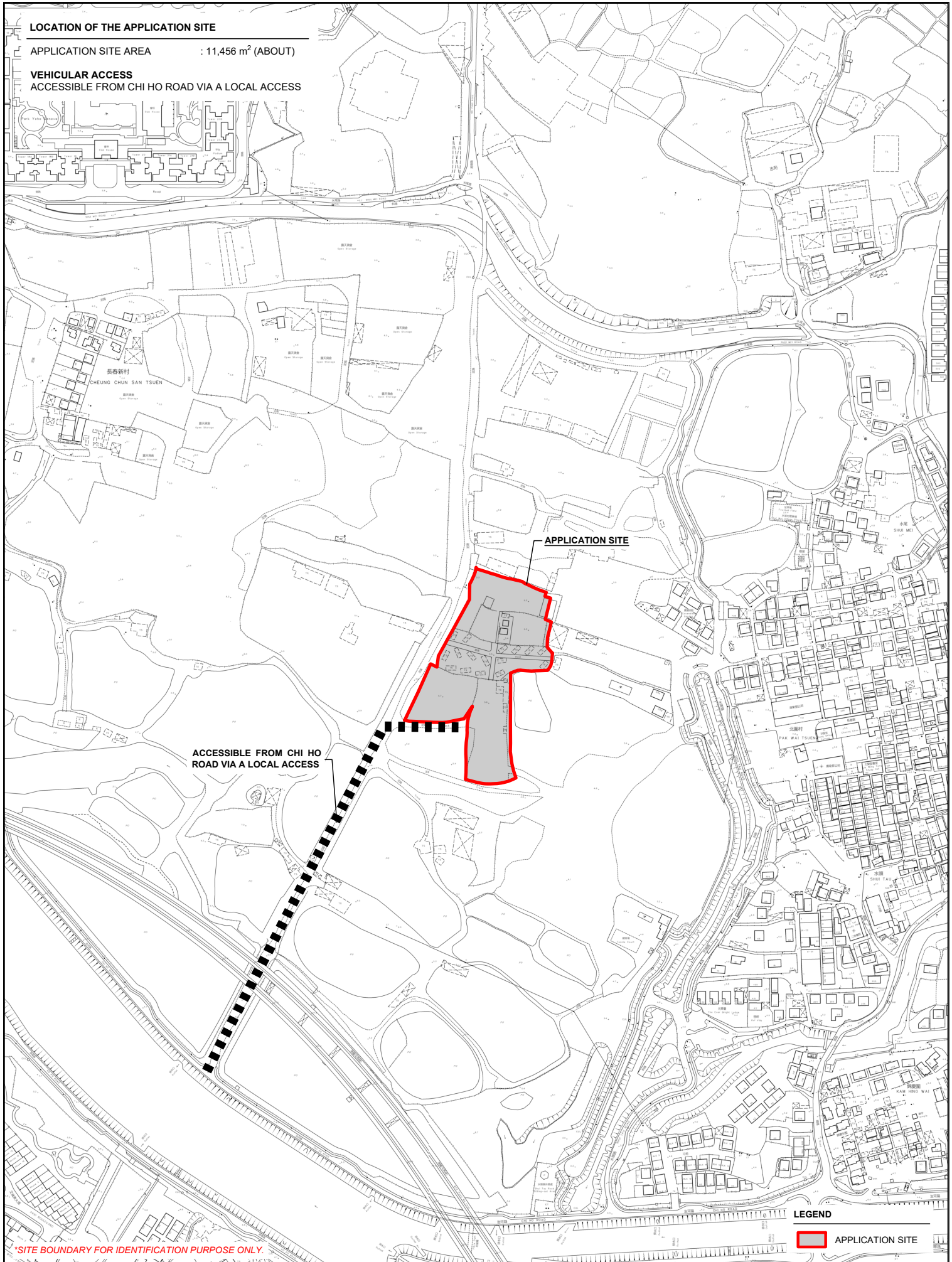


**LOCATION OF THE APPLICATION SITE**

APPLICATION SITE AREA : 11,456 m<sup>2</sup> (ABOUT)


**VEHICULAR ACCESS**  
ACCESSIBLE FROM CHI HO ROAD VIA A LOCAL ACCESS



\*SITE BOUNDARY FOR IDENTIFICATION PURPOSE ONLY.

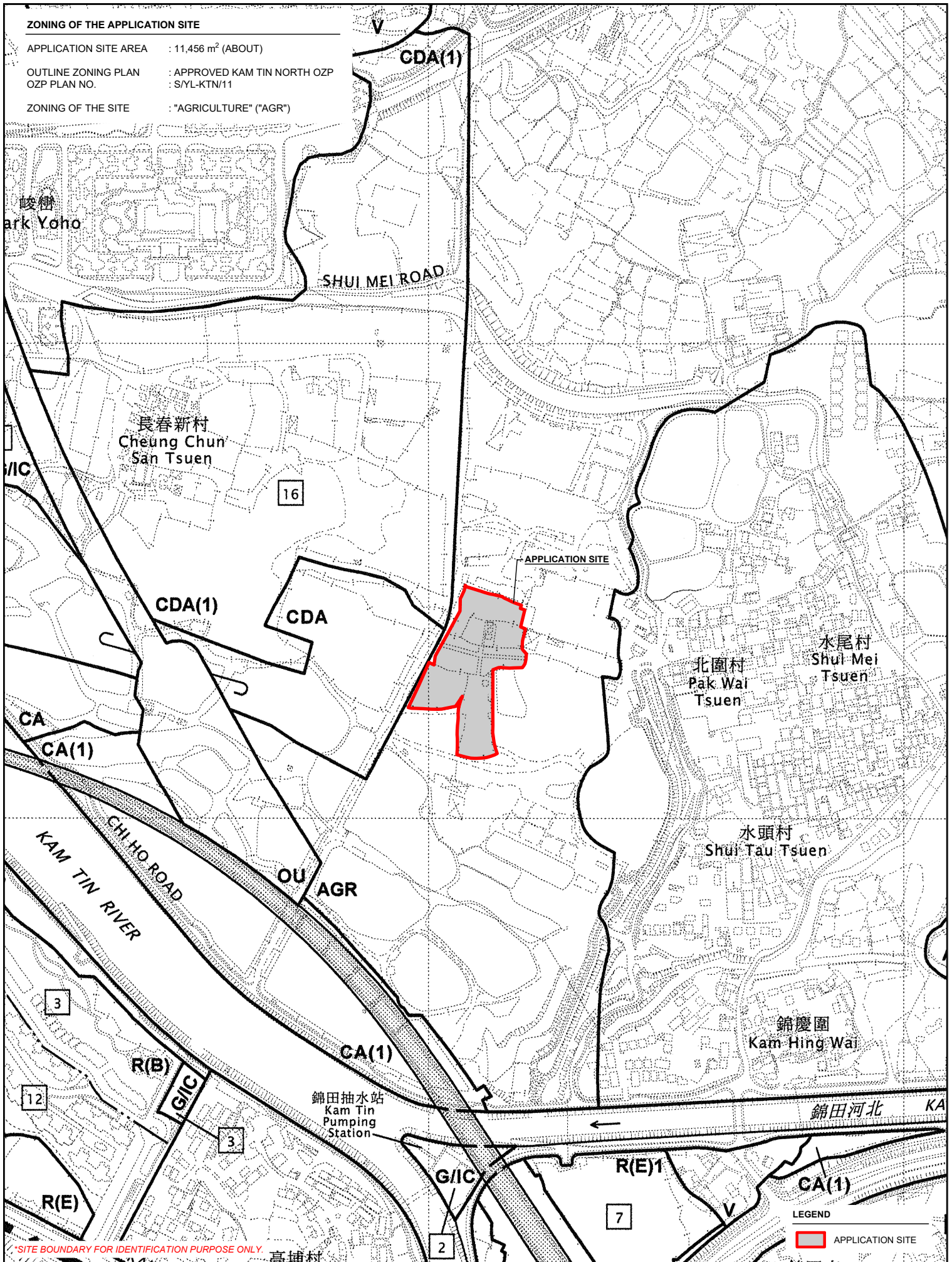
**LEGEND**

 APPLICATION SITE

PLANNING CONSULTANT 	PROJECT TEMPORARY HOLIDAY CAMP, PLACE OF RECREATION, SPORTS OR CULTURE, BARBECUE SITE AND EATING PLACE WITH ANCILLARY FACILITIES AND ASSOCIATED FILLING OF LAND FOR A PERIOD OF 3 YEARS	ADDRESS VARIOUS LOTS IN D.D. 107 AND D.D. 109, FUNG KAT HEUNG, KAM TIN, YUEN LONG, NEW TERRITORIES	SCALE 1 : 4000 @ A4	TITLE LOCATION PLAN	
			DRAWN BY MN	DATE 28.4.2026	DWG NO. PLAN 1
			REVISED BY	DATE	

**ZONING OF THE APPLICATION SITE**

APPLICATION SITE AREA : 11,456 m<sup>2</sup> (ABOUT)  
 OUTLINE ZONING PLAN : APPROVED KAM TIN NORTH OZP  
 OZP PLAN NO. : SYL-KTN/11  
 ZONING OF THE SITE : "AGRICULTURE" ("AGR")



\*SITE BOUNDARY FOR IDENTIFICATION PURPOSE ONLY.

PLANNING CONSULTANT 	PROJECT TEMPORARY HOLIDAY CAMP, PLACE OF RECREATION, SPORTS OR CULTURE, BARBECUE SITE AND EATING PLACE WITH ANCILLARY FACILITIES AND ASSOCIATED FILLING OF LAND FOR A PERIOD OF 3 YEARS	ADDRESS VARIOUS LOTS IN D.D. 107 AND D.D. 109, FUNG KAT HEUNG, KAM TIN, YUEN LONG, NEW TERRITORIES	SCALE 1 : 5000 @ A4		TITLE ZONING PLAN	
			DRAWN BY MN	DATE 28.4.2026	DWG NO. PLAN 2	VER. 001

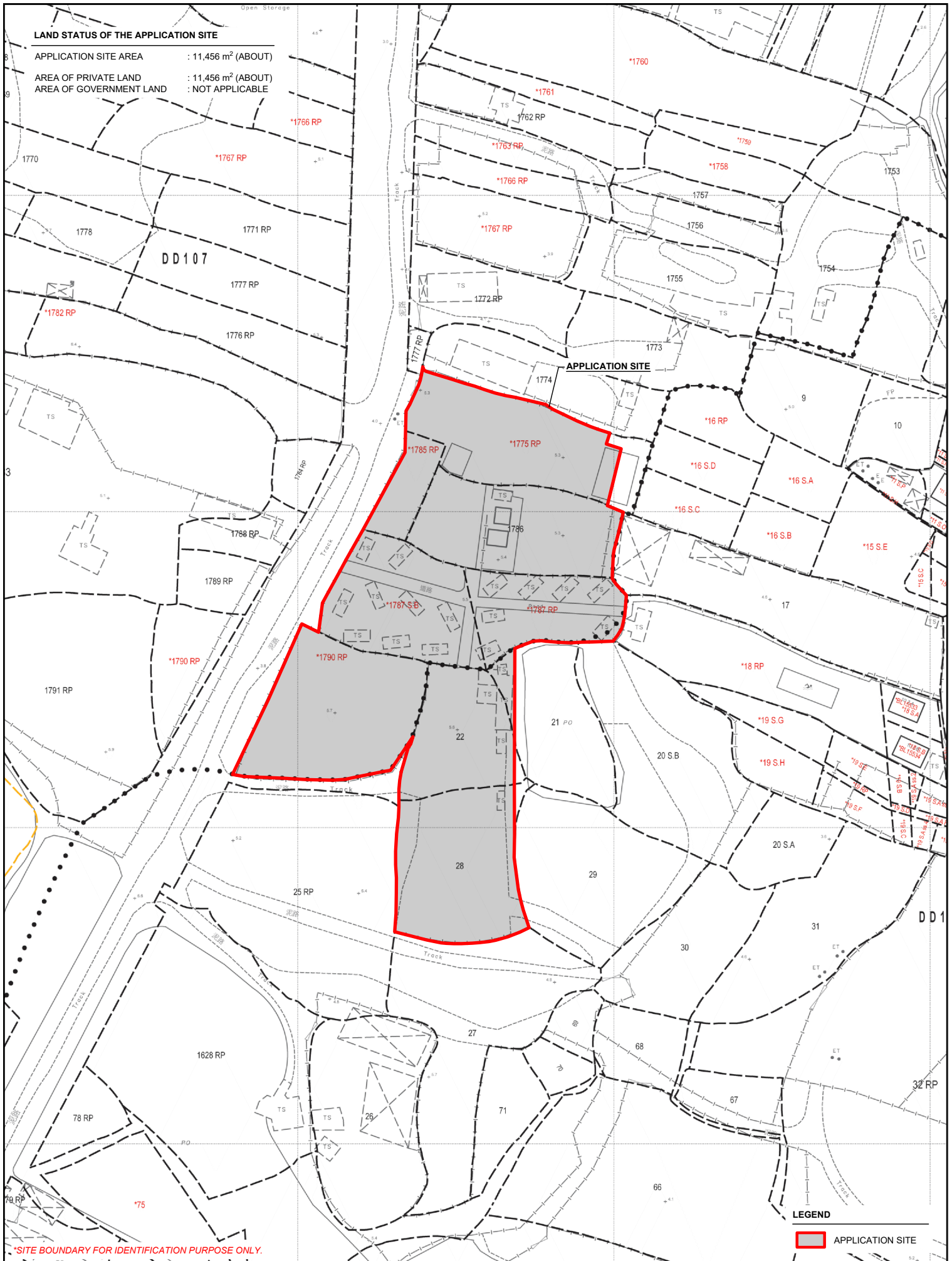


**LAND STATUS OF THE APPLICATION SITE**

APPLICATION SITE AREA : 11,456 m<sup>2</sup> (ABOUT)

AREA OF PRIVATE LAND : 11,456 m<sup>2</sup> (ABOUT)

AREA OF GOVERNMENT LAND : NOT APPLICABLE



\*SITE BOUNDARY FOR IDENTIFICATION PURPOSE ONLY.

**LEGEND**

 APPLICATION SITE

PLANNING CONSULTANT 	PROJECT TEMPORARY HOLIDAY CAMP, PLACE OF RECREATION, SPORTS OR CULTURE, BARBECUE SITE AND EATING PLACE WITH ANCILLARY FACILITIES AND ASSOCIATED FILLING OF LAND FOR A PERIOD OF 3 YEARS	ADDRESS VARIOUS LOTS IN D.D. 107 AND D.D. 109, FUNG KAT HEUNG, KAM TIN, YUEN LONG, NEW TERRITORIES	SCALE 1 : 1000 @ A4		TITLE LAND STATUS	
			DRAWN BY MN	DATE 23.4.2026	DWG NO. PLAN 3	VER. 001

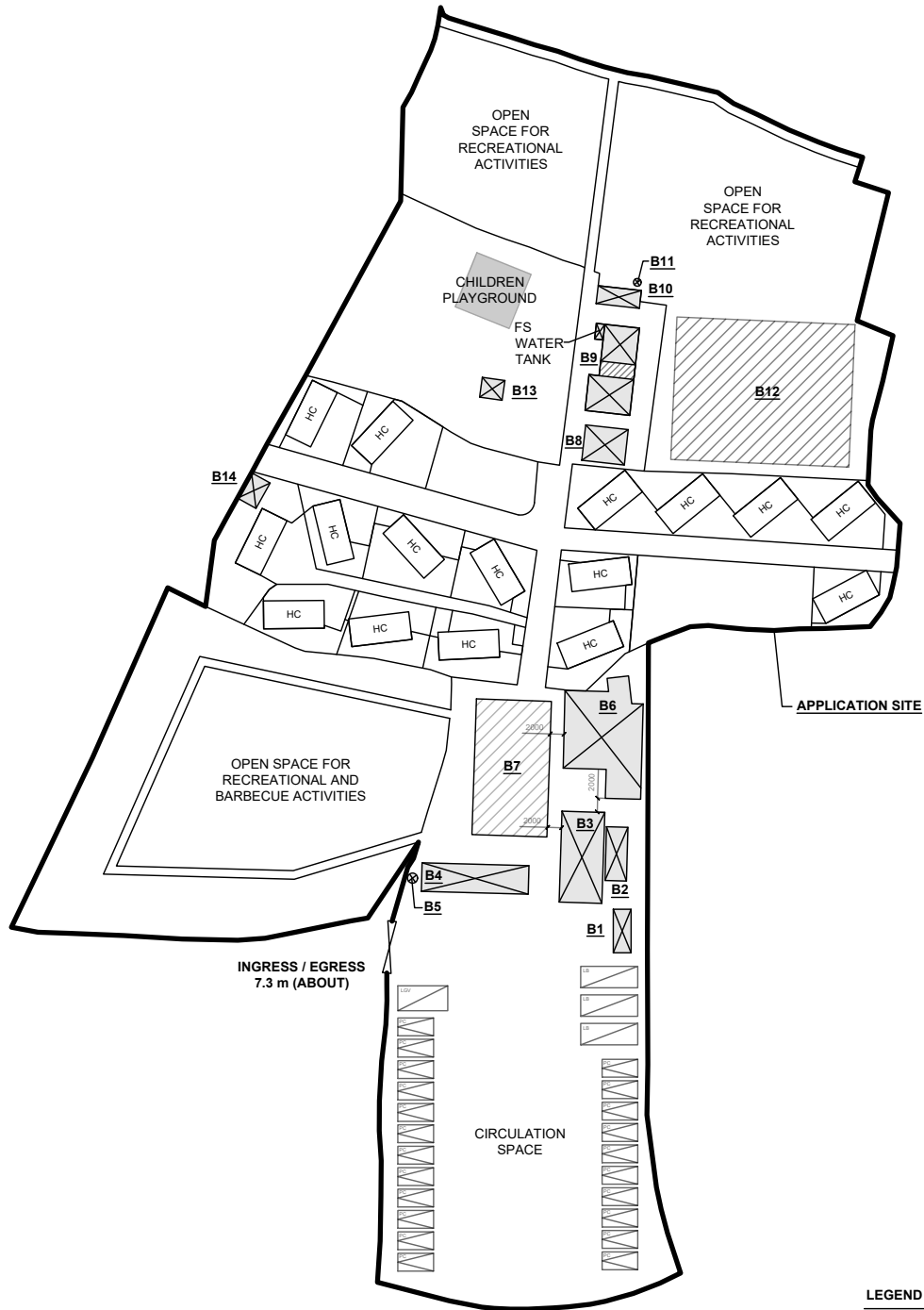


**DEVELOPMENT PARAMETERS**

APPLICATION SITE AREA	: 11,456 m <sup>2</sup>	(ABOUT)
COVERED AREA	: 1,160 m <sup>2</sup> + 544 m <sup>2</sup>	(ABOUT)
UNCOVERED AREA	: 9,752 m <sup>2</sup>	(ABOUT)
PLOT RATIO	: 0.15	(ABOUT)
SITE COVERAGE	: 15 %	(ABOUT)
NO. OF STRUCTURE	: 14 + 16 (HOLIDAY CAMPS)	
DOMESTIC GFA	: NOT APPLICABLE	
NON-DOMESTIC GFA	: 1,160 m <sup>2</sup> + 544 m <sup>2</sup>	(ABOUT)
TOTAL GFA	: 1,160 m <sup>2</sup> + 544 m <sup>2</sup>	(ABOUT)
BUILDING HEIGHT	: 1.9 m - 8 m	(ABOUT)
NO. OF STOREY	: 1	

**DETAILS OF HOLIDAY CAMP**

NO. OF HOLIDAY CAMP	: 16	
COVERED AREA OF CAMP	: 34 m <sup>2</sup> EACH	(ABOUT)
GFA OF CAMP	: 34 m <sup>2</sup> EACH	(ABOUT)
TOTAL COVERED AREA OF CAMP	: 544 m <sup>2</sup>	(ABOUT)
TOTAL GFA OF CAMP	: 544 m <sup>2</sup>	(ABOUT)
BUILDING HEIGHT	: 4.5 m	(ABOUT)



**PARKING PROVISIONS**

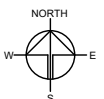
NO. OF PRIVATE CAR PARKING SPACE	: 22
DIMENSION OF PARKING SPACE	: 5 m (L) X 2.5 m (W)
NO. OF L/UL SPACE FOR LIGHT GOODS VEHICLE	: 1
DIMENSION OF L/UL SPACE	: 7 m (L) X 3.5 m (W)
NO. OF L/UL SPACE FOR LIGHT BUS	: 3
DIMENSION OF L/UL SPACE	: 8 m (L) X 3 m (W)

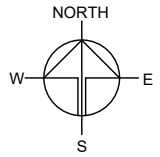
\*SITE BOUNDARY FOR IDENTIFICATION PURPOSE ONLY.

**LEGEND**

- APPLICATION SITE
- STRUCTURE (ENCLOSED)
- STRUCTURE (RETRACTABLE MARQUEE)
- STRUCTURE (CANOPY)
- HOLIDAY CAMP
- PARKING SPACE (PRIVATE CAR)
- L/UL SPACE (LIGHT BUS)
- L/UL SPACE (LIGHT GOODS VEHICLE)
- INGRESS / EGRESS

PLANNING CONSULTANT 	PROJECT TEMPORARY HOLIDAY CAMP, PLACE OF RECREATION, SPORTS OR CULTURE, BARBECUE SITE AND EATING PLACE WITH ANCILLARY FACILITIES AND ASSOCIATED FILLING OF LAND FOR A PERIOD OF 3 YEARS	ADDRESS VARIOUS LOTS IN D.D. 107 AND D.D. 109, FUNG KAT HEUNG, KAM TIN, YUEN LONG, NEW TERRITORIES	SCALE 1 : 1000 @ A4		TITLE LAYOUT PLAN	
			DRAWN BY MN	DATE 28.4.2026	DWG NO. PLAN 4	VER. 001





STRUCTURE	USE	COVERED AREA	GROSS FLOOR AREA	BUILDING HEIGHT
B1	STORE ROOM	20 m <sup>2</sup> (ABOUT)	20 m <sup>2</sup> (ABOUT)	3 m (ABOUT)(1-STOREY)
B2	STORE ROOM	23 m <sup>2</sup> (ABOUT)	23 m <sup>2</sup> (ABOUT)	3 m (ABOUT)(1-STOREY)
B3	RECEPTION & OFFICE	80 m <sup>2</sup> (ABOUT)	80 m <sup>2</sup> (ABOUT)	3.5 m (ABOUT)(1-STOREY)
B4	WASHROOM	40 m <sup>2</sup> (ABOUT)	40 m <sup>2</sup> (ABOUT)	3.2 m (ABOUT)(1-STOREY)
B5	WATER TANK	2 m <sup>2</sup> (ABOUT)	2 m <sup>2</sup> (ABOUT)	3 m (ABOUT)
B6	EATING PLACE	145 m <sup>2</sup> (ABOUT)	145 m <sup>2</sup> (ABOUT)	4.8 m (ABOUT)(1-STOREY)
B7*	RAIN SHELTER FOR BARBECUE ACTIVITIES	200 m <sup>2</sup> (ABOUT)	200 m <sup>2</sup> (ABOUT)	6.5 m (ABOUT)(1-STOREY)
B8	KITCHEN	30 m <sup>2</sup> (ABOUT)	30 m <sup>2</sup> (ABOUT)	3 m (ABOUT)(1-STOREY)
B9	FS PUMP ROOM, WATER TANK AND EATING PLACE	76 m <sup>2</sup> (ABOUT)	76 m <sup>2</sup> (ABOUT)	4 m (ABOUT)(1-STOREY)
B10	WASHROOM	19 m <sup>2</sup> (ABOUT)	19 m <sup>2</sup> (ABOUT)	3.1 m (ABOUT)(1-STOREY)
B11	WATER TANK	1 m <sup>2</sup> (ABOUT)	1 m <sup>2</sup> (ABOUT)	1.9 m (ABOUT)
B12*	RAIN SHELTER FOR RECREATIONAL, SPORTS OR CULTURAL ACTIVITIES	500 m <sup>2</sup> (ABOUT)	500 m <sup>2</sup> (ABOUT)	8 m (ABOUT)(1-STOREY)
B13	WINDMILL (DECORATION)	9 m <sup>2</sup> (ABOUT)	9 m <sup>2</sup> (ABOUT)	5 m (ABOUT)(1-STOREY)
B14	STORE ROOM	15 m <sup>2</sup> (ABOUT)	15 m <sup>2</sup> (ABOUT)	2.4 m (ABOUT)(1-STOREY)
<b>TOTAL</b>		<b>1,160 m<sup>2</sup> (ABOUT)</b>	<b>1,160 m<sup>2</sup> (ABOUT)</b>	

\* STRUCTURES B7 AND B12 ARE CANOPY.

PLANNING CONSULTANT



PROJECT

PROPOSED TEMPORARY HOLIDAY CAMP, PLACE OF RECREATION, SPORTS OR CULTURE, BARBECUE SITE AND EATING PLACE WITH ANCILLARY FACILITIES FOR A PERIOD OF 3 YEARS AND ASSOCIATED FILLING OF LAND

SITE LOCATION

VARIOUS LOTS IN D.D. 107 AND D.D. 109, FUNG KAT HEUNG, KAM TIN, YUEN LONG, NEW TERRITORIES

SCALE

-

DRAWN BY	DATE
MN	23.4.2026

CHECKED BY	DATE

APPROVED BY	DATE

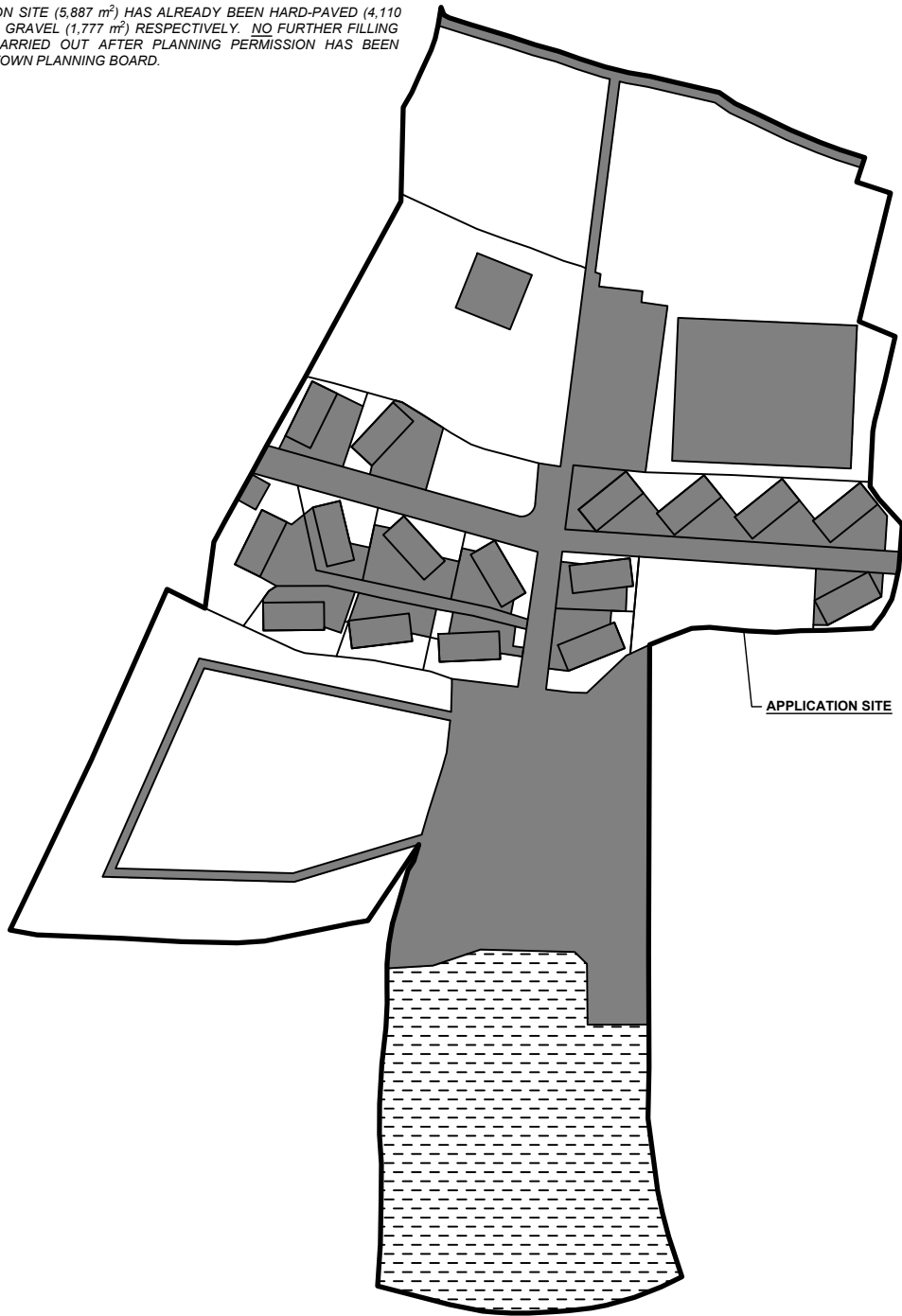
DWG. TITLE  
DETAILS OF STRUCTURES

DWG NO.	VER.
PLAN 5	001

**EXISTING CONDITION OF THE APPLICATION SITE**

APPLICATION SITE AREA	: 11,456 m <sup>2</sup>	(ABOUT)
EXISTING HARD-PAVED AREA	: 4,110 m <sup>2</sup>	(ABOUT)
DEPTH OF LAND FILLING	: NOT MORE THAN 0.2 m	
PROPOSED SITE LEVELS	: +5.4 mPD TO +5.6 mPD	(ABOUT)
MATERIAL OF LAND FILLING	: CONCRETE	
PURPOSE OF LAND FILLING	: SITE FORMATION OF STRUCTURE AND CIRCULATION SPACE	
AREA COVERED BY GRAVEL	: 1,777 m <sup>2</sup>	(ABOUT)
PURPOSE OF COVERING BY GRAVEL	: PARKING AND LOADING / UNLOADING PURPOSES	
AREA OF LAWN	: 5,569 m <sup>2</sup>	(ABOUT)
PURPOSE OF LAWN AREA	: HOLIDAY CAMP, OPEN SPACE AND FOR RECREATIONAL, SPORTS OR CULTURAL ACTIVITIES	

PART THE APPLICATION SITE (5,887 m<sup>2</sup>) HAS ALREADY BEEN HARD-PAVED (4,110 m<sup>2</sup>) AND COVERED BY GRAVEL (1,777 m<sup>2</sup>) RESPECTIVELY. NO FURTHER FILLING OF LAND WILL BE CARRIED OUT AFTER PLANNING PERMISSION HAS BEEN GRANTED FROM THE TOWN PLANNING BOARD.



**LEGEND**

	APPLICATION SITE
	HARD PAVED AREA
	AREA COVERED BY GRAVEL
	LAWN AREA

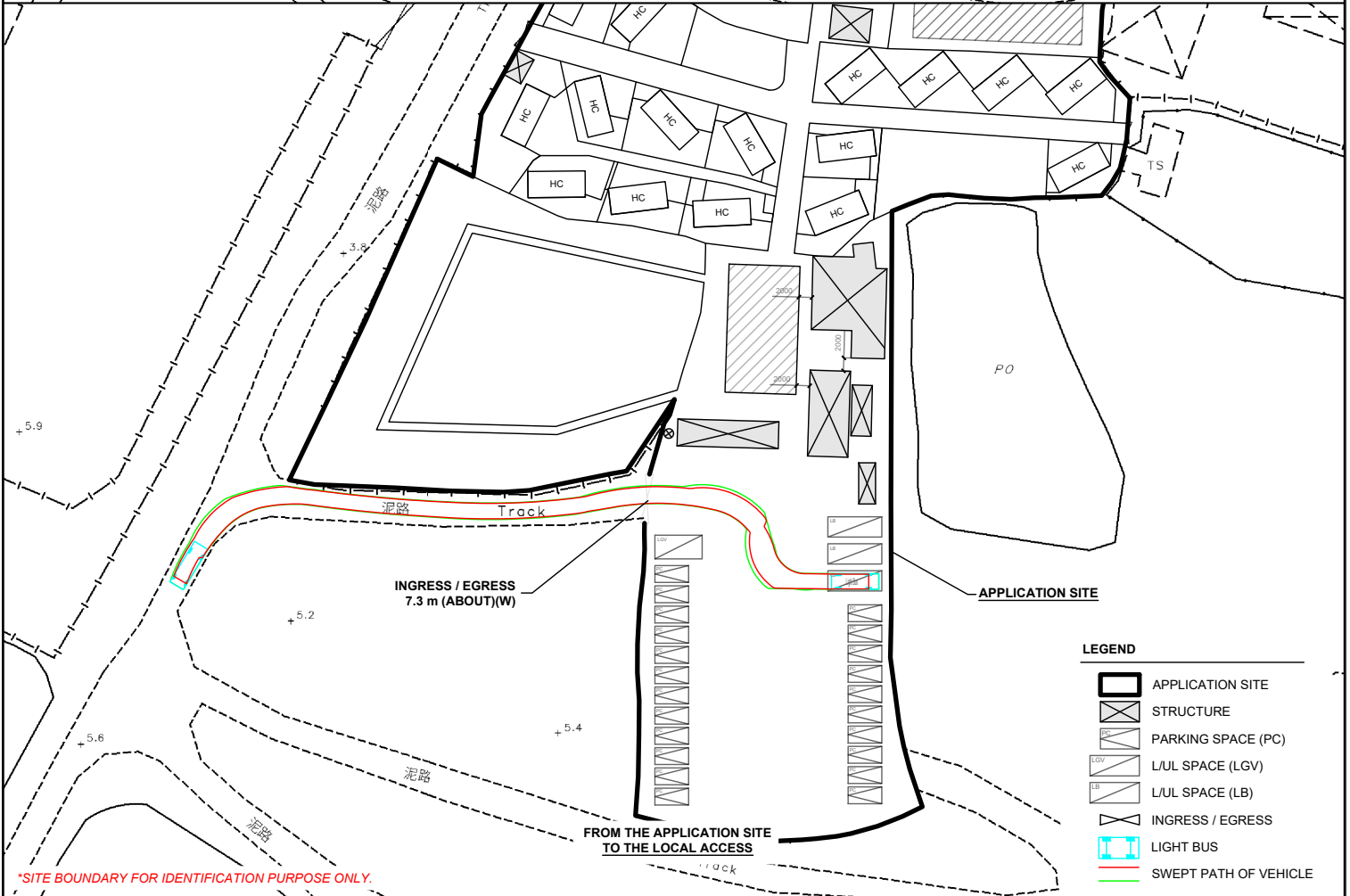
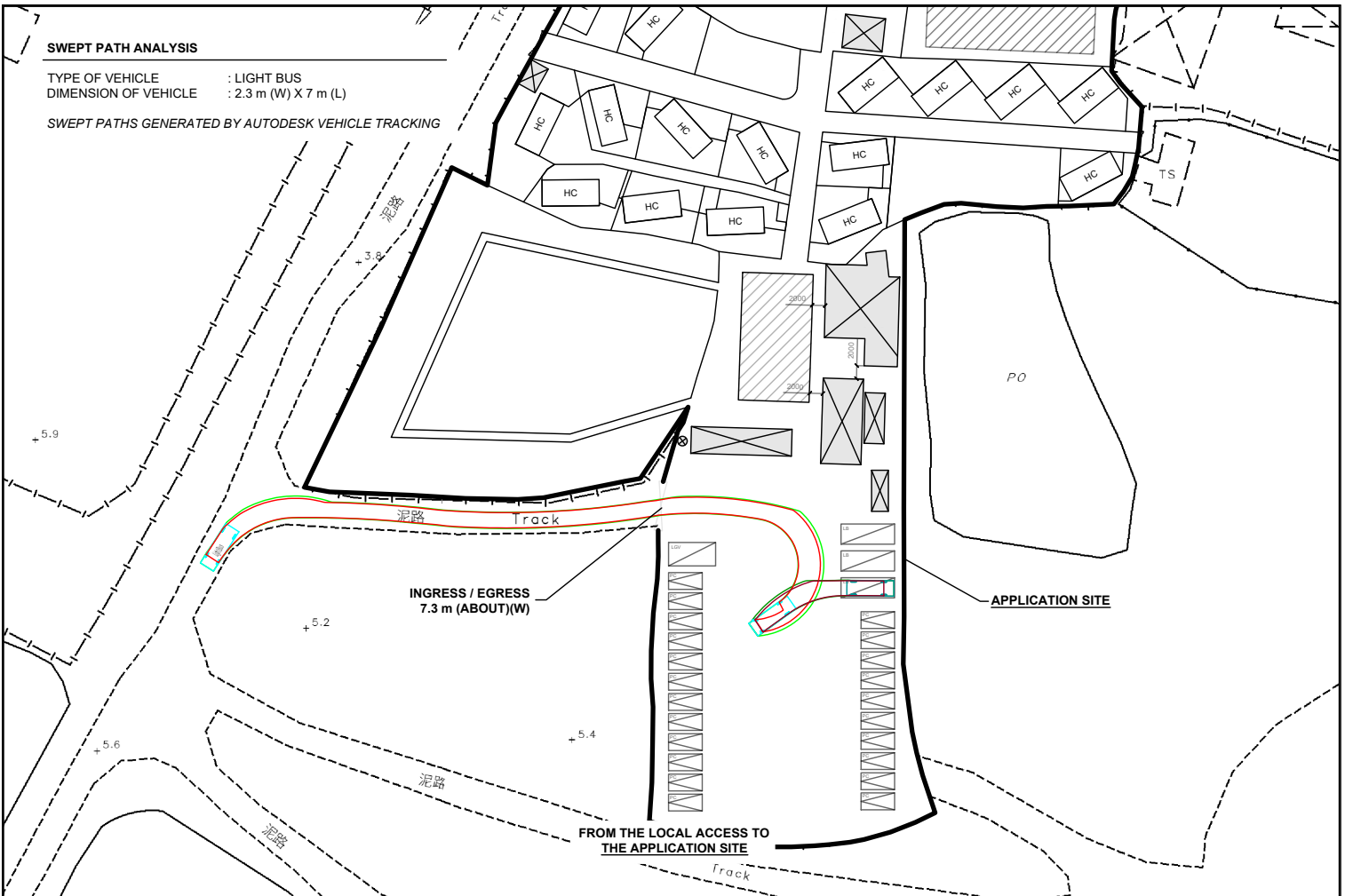
\*SITE BOUNDARY FOR IDENTIFICATION PURPOSE ONLY.

	<b>PROJECT</b> TEMPORARY HOLIDAY CAMP, PLACE OF RECREATION, SPORTS OR CULTURE, BARBECUE SITE AND EATING PLACE WITH ANCILLARY FACILITIES AND ASSOCIATED FILLING OF LAND FOR A PERIOD OF 3 YEARS	<b>ADDRESS</b> VARIOUS LOTS IN D.D. 107 AND D.D. 109, FUNG KAT HEUNG, KAM TIN, YUEN LONG, NEW TERRITORIES	<b>SCALE</b> 1 : 1000 @ A4		<b>TITLE</b> FILLING OF LAND	
			<b>DRAWN BY</b> MN	<b>DATE</b> 28.4.2026	<b>DWG NO.</b> PLAN 6	<b>VER.</b> 001
			<b>REVISED BY</b>	<b>DATE</b>		

**SWEPT PATH ANALYSIS**

TYPE OF VEHICLE : LIGHT BUS  
 DIMENSION OF VEHICLE : 2.3 m (W) X 7 m (L)

SWEPT PATHS GENERATED BY AUTODESK VEHICLE TRACKING



**LEGEND**

- APPLICATION SITE
- STRUCTURE
- PARKING SPACE (PC)
- L/U/L SPACE (LGV)
- L/U/L SPACE (LB)
- INGRESS / EGRESS
- LIGHT BUS
- SWEEP PATH OF VEHICLE

\*SITE BOUNDARY FOR IDENTIFICATION PURPOSE ONLY.

PLANNING CONSULTANT 	PROJECT TEMPORARY HOLIDAY CAMP, PLACE OF RECREATION, SPORTS OR CULTURE, BARBECUE SITE AND EATING PLACE WITH ANCILLARY FACILITIES AND ASSOCIATED FILLING OF LAND FOR A PERIOD OF 3 YEARS	ADDRESS VARIOUS LOTS IN D.D. 107 AND D.D. 109, FUNG KAT HEUNG, KAM TIN, YUEN LONG, NEW TERRITORIES	SCALE 1 : 1000 @ A4		TITLE SWEPT PATH ANALYSIS (LB)	
			DRAWN BY MN	DATE 28.4.2026	DWG NO. PLAN 7	VER. 001
*SITE BOUNDARY FOR IDENTIFICATION PURPOSE ONLY.			REVISED BY	DATE		