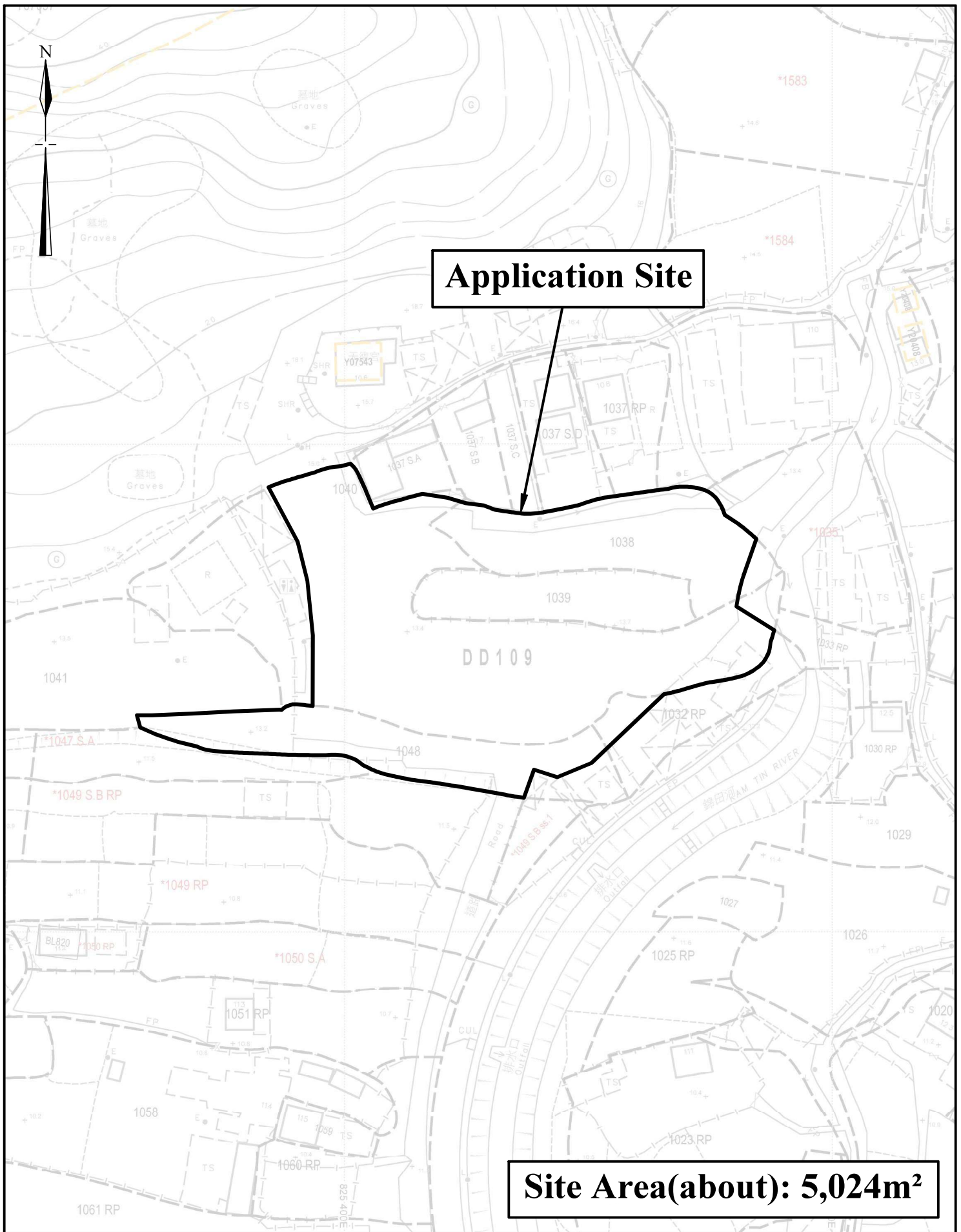


Extracted from Approved Kam Tin North Outline Zoning Plan No. S/YL-KTN/11

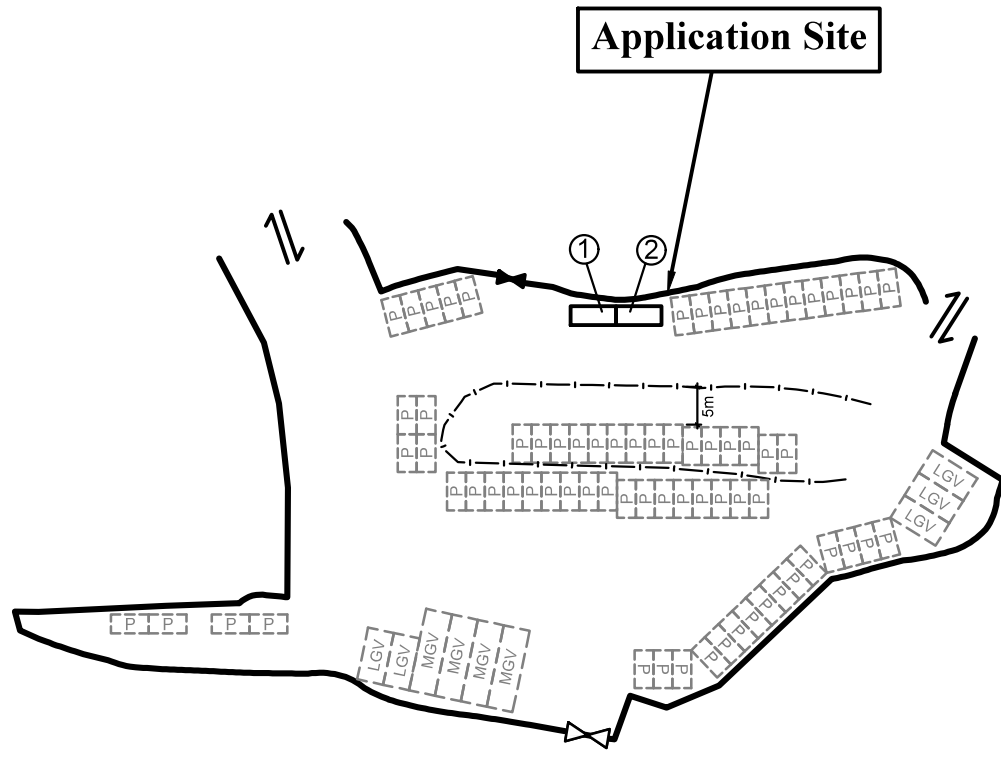
<p>1:1000</p>	<p>Location Plan</p>	<p>Goldrich Planners & Surveyors Ltd.</p>
<p>April 2026</p>	<p>Lots 1032 RP(part), 1038(part), 1039, 1040 (part) and 1048(part) in DD.109</p>	<p>Plan 1 (P26028)</p>



Application Site

Site Area(about): 5,024m²

<p>1:1000</p>	<p>Lot Index Plan</p>	<p>Goldrich Planners & Surveyors Ltd.</p>
<p>April 2026</p>	<p>Lots 1032 RP(part), 1038(part), 1039, 1040 (part) and 1048(part) in DD.109</p>	<p>Plan 2 (P26028)</p>



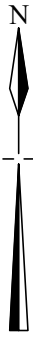
Legend

- Access to adjacent area
- Vehicular Ingress / Egress
- Existing Fencing
- Parking space for medium goods vehicle
(11m (L) x 3.5m (W)) x 4 nos.
- Parking space for light goods vehicle
(7m (L) x 3.5m (W)) x 5 nos.
- Parking space for private cars
(5m (L) x 2.5m (W)) x 72 nos.

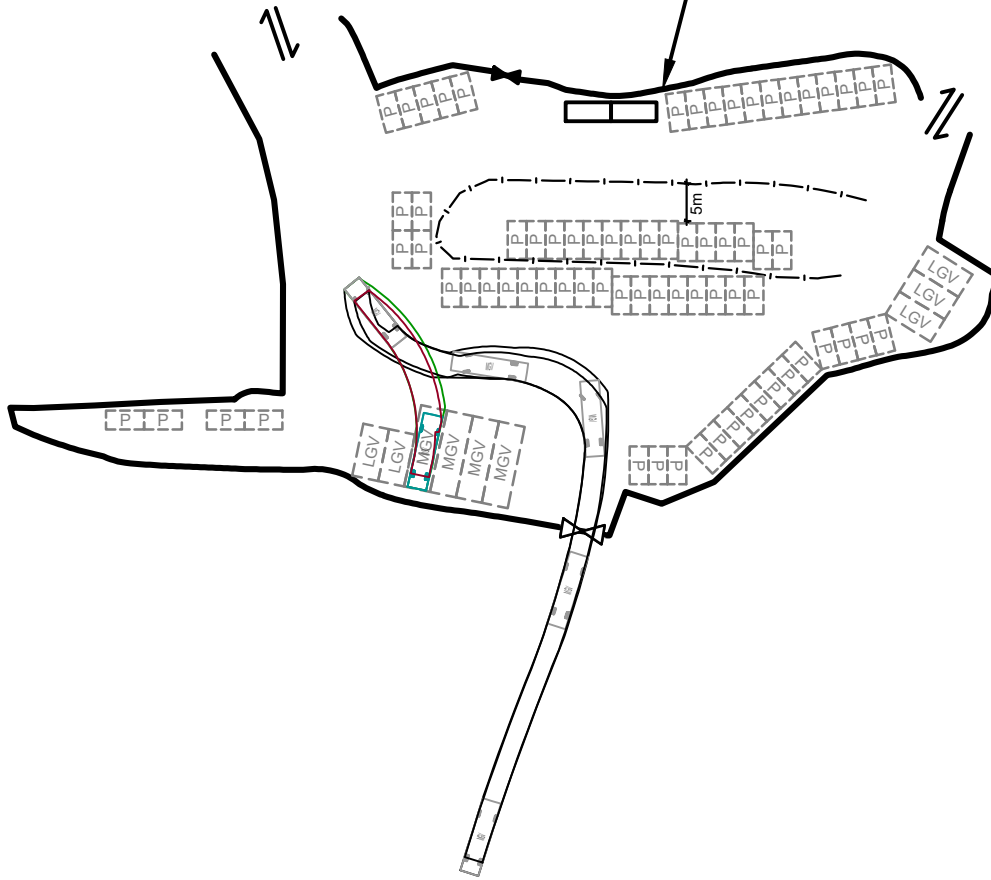
Site Area(about): 5,024m²

No.	Uses	Floor Area (about)	Covered Area (about)	Storeys	Height
1	Guard Room	15 m ²	15 m ²	1	3m
2	Storeroom	15 m ²	15 m ²	1	3m
Total		<u>30 m²</u>	<u>30 m²</u>		

1:1000	Layout Plan	Goldrich Planners & Surveyors Ltd.
April 2026	Lots 1032 RP(part), 1038(part), 1039, 1040 (part) and 1048(part) in DD.109	Plan 3 (P26028)



Application Site



Legend



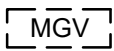
Access to adjacent area



Vehicular Ingress / Egress



Existing Fencing



Parking space for medium goods vehicle
(11m (L) x 3.5m (W)) x 4 nos.



Parking space for light goods vehicle
(7m (L) x 3.5m (W)) x 5 nos.



Parking space for private cars
(5m (L) x 2.5m (W)) x 72 nos.



Medium goods vehicle
(11m (L) x 2.5m (W))

Site Area(about): 5,024m²

1:1000

Swept Path Analysis

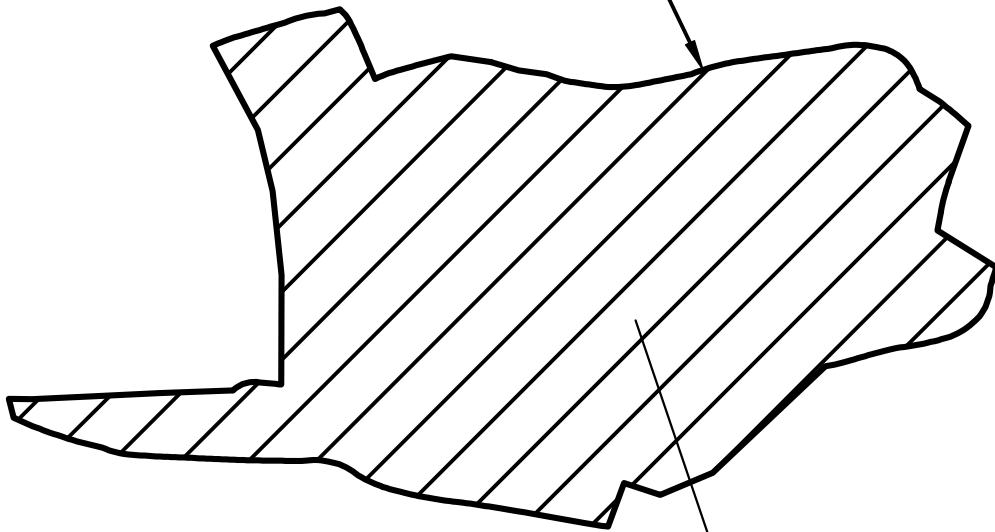
Goldrich Planners &
Surveyors Ltd.

May 2026

Lots 1032 RP(part), 1038(part), 1039,
1040 (part) and 1048(part) in DD.109

Plan 4
(P26028)

Application Site



**The site has been paved with
concrete of about 0.2m in depth
(from 13.7m,PD to 13.9mPD)
for the provision of solid ground for
vehicle maneuvering**

1:1000

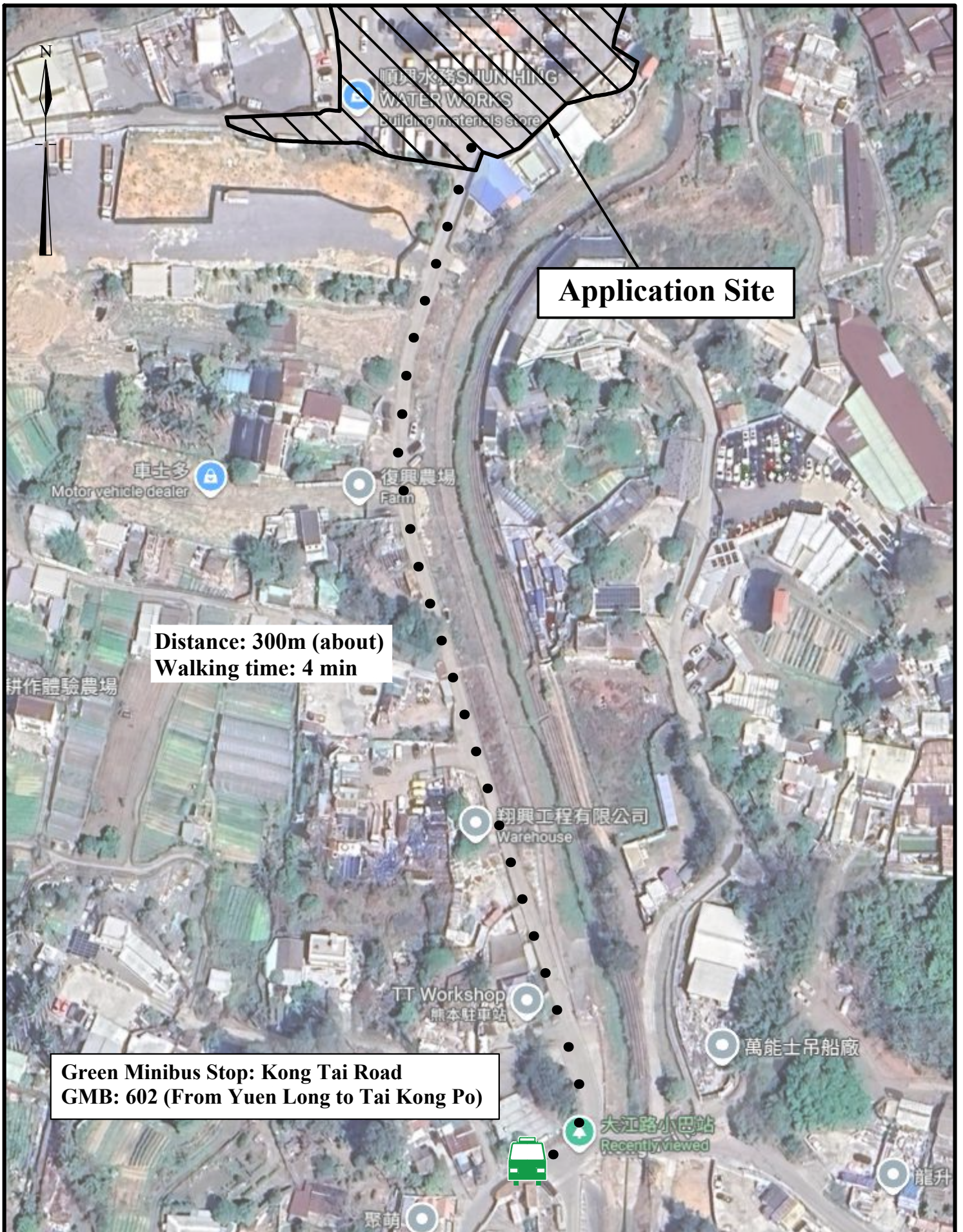
Plan Showing Filling of Land

**Goldrich Planners &
Surveyors Ltd.**

May 2026

**Lots 1032 RP(part), 1038(part), 1039,
1040 (part) and 1048(part) in DD.109**

**Plan 5
(P26028)**



N.T.S	Plan Showing Nearest Public Transport Services	Goldrich Planners & Surveyors Ltd.
May 2026	Lots 1032 RP(part), 1038(part), 1039, 1040 (part) and 1048(part) in DD.109	Plan 6 (P26028)