

Legend:

Application Site 申請範圍

Appendix 1
 Location: DD 109 Lot 1354 (Part)
 DD 109 Lot 1356 (Part)
 DD 109 Lot 1373 (Part)
 DD 109 Lot 1374 (Part)
 DD 109 Lot 1375 (Part)
 OZP: S/YL-KTN/11
 District: Kam Tin North
 Zoning: Agriculture
 Date: 12 May 2026

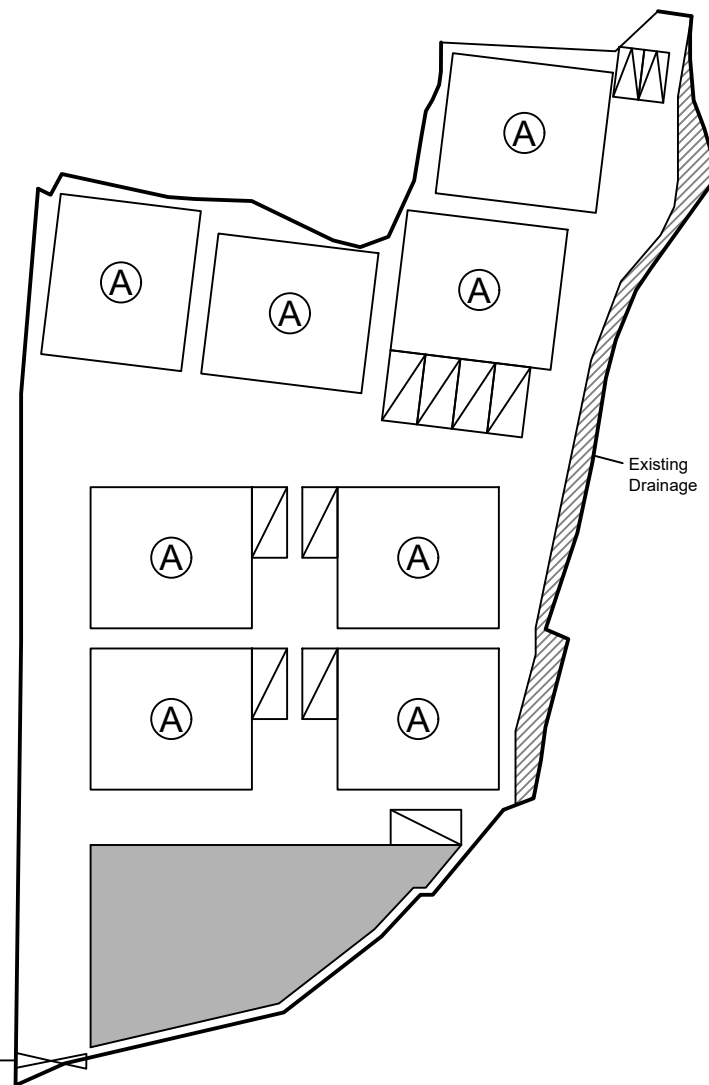
Application Site Location
 申請位置圖
 擬議臨時貨倉 (危險品倉庫除外)
 連附屬設施和相關填土工程
 (為期3年)
 Proposed Temporary Warehouse (excluding
 Dangerous Goods Godown) with Ancillary
 Facilities and Associated Filling of Land for a
 Period of 3 Years

SCALE
 1:1000
 @A4

For Identification Only	Drawing No.:
	1

Proposed Structures Details

	Structures	Gross Floor Area (GFA)	Height (Not Exceeding)	Unit(s)
A	Warehouse (excluding D.G.G) with Ancillary Office	About 16m x 14m = 224 m ²	8m	8
	Total	About 1,792 m ²		
	Ancillary Open Storage Area	About 474 m ²		
	Private Car Parking Space	5m x 2.5m		2
	LGV L/UL Space	7m x 3.5m		9



Ingress / egress:
About 7m

Scale: 1:750 @A4

Total Area: 4,735 m² (About)

Covered Area: 1,792 m² (About)

Uncovered Area: 2,943 m² (About)

Non-Domestic GFA: 1,792 m² (About)

Nos. of Proposed Structures: 8

Area of Ancillary Open Storage: About 474 m² (About 10% of Site Area)

Appendix 2

Proposed
Layout Plan

Location:
D.D. 109 Lot 1354 (Part), 1356 (Part), 1373 (Part), 1374 (Part) and 1375 (Part)

OZP: S/YL-KTN/11
District: Kam Tin North
Zoning: Agriculture

擬議臨時貨倉 (危險品倉庫除外)
連附屬設施和相關填土工程
(為期3年)

Proposed Temporary Warehouse (excluding Dangerous Goods Godown) with Ancillary Facilities and Associated Filling of Land for a Period of 3 Years

Legend:

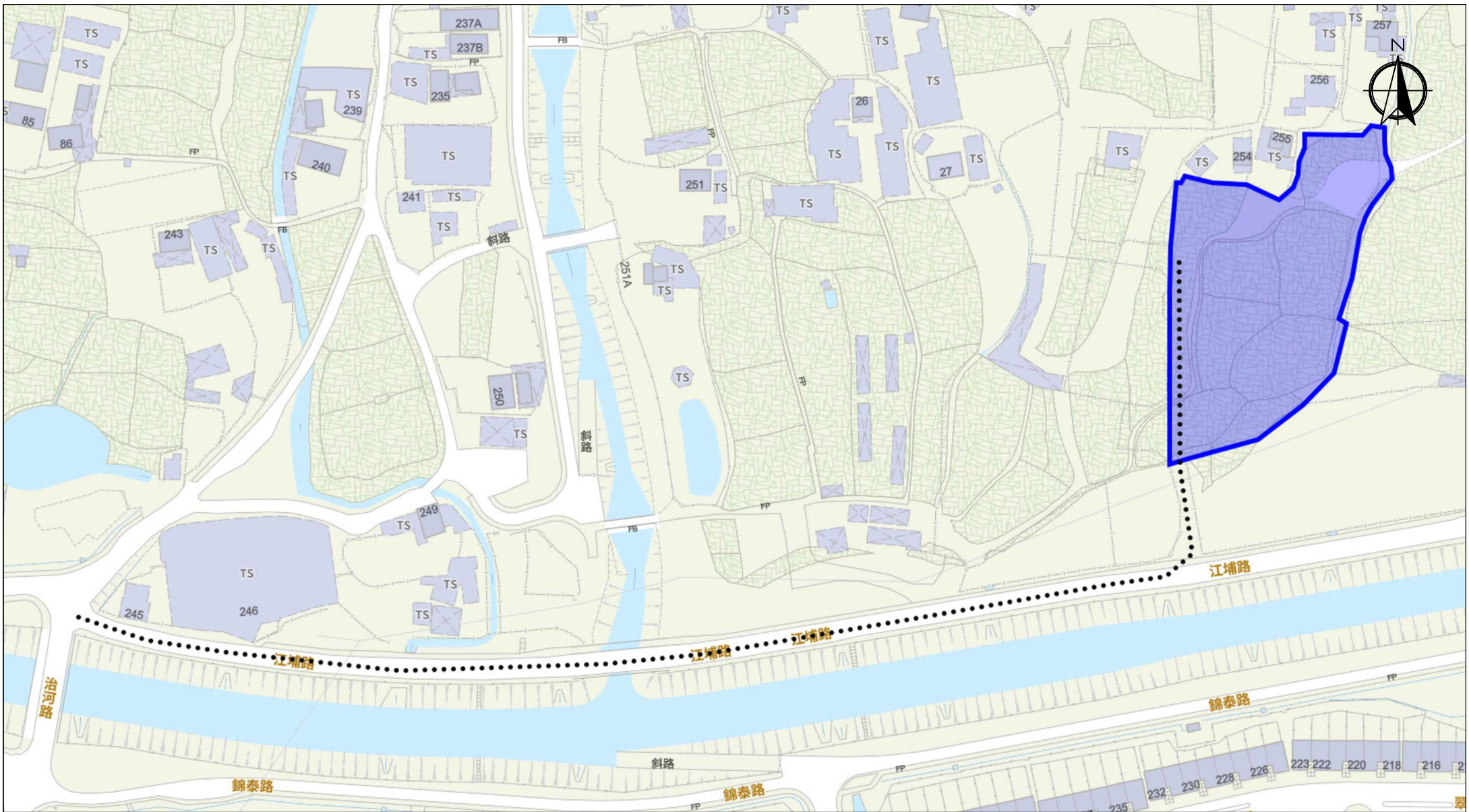
- Ingress / egress
- Proposed Structures
- Private Car Parking Space
- LGV L/UL Space
- Ancillary OS Area

Drawing No.:

2

For Identification Only

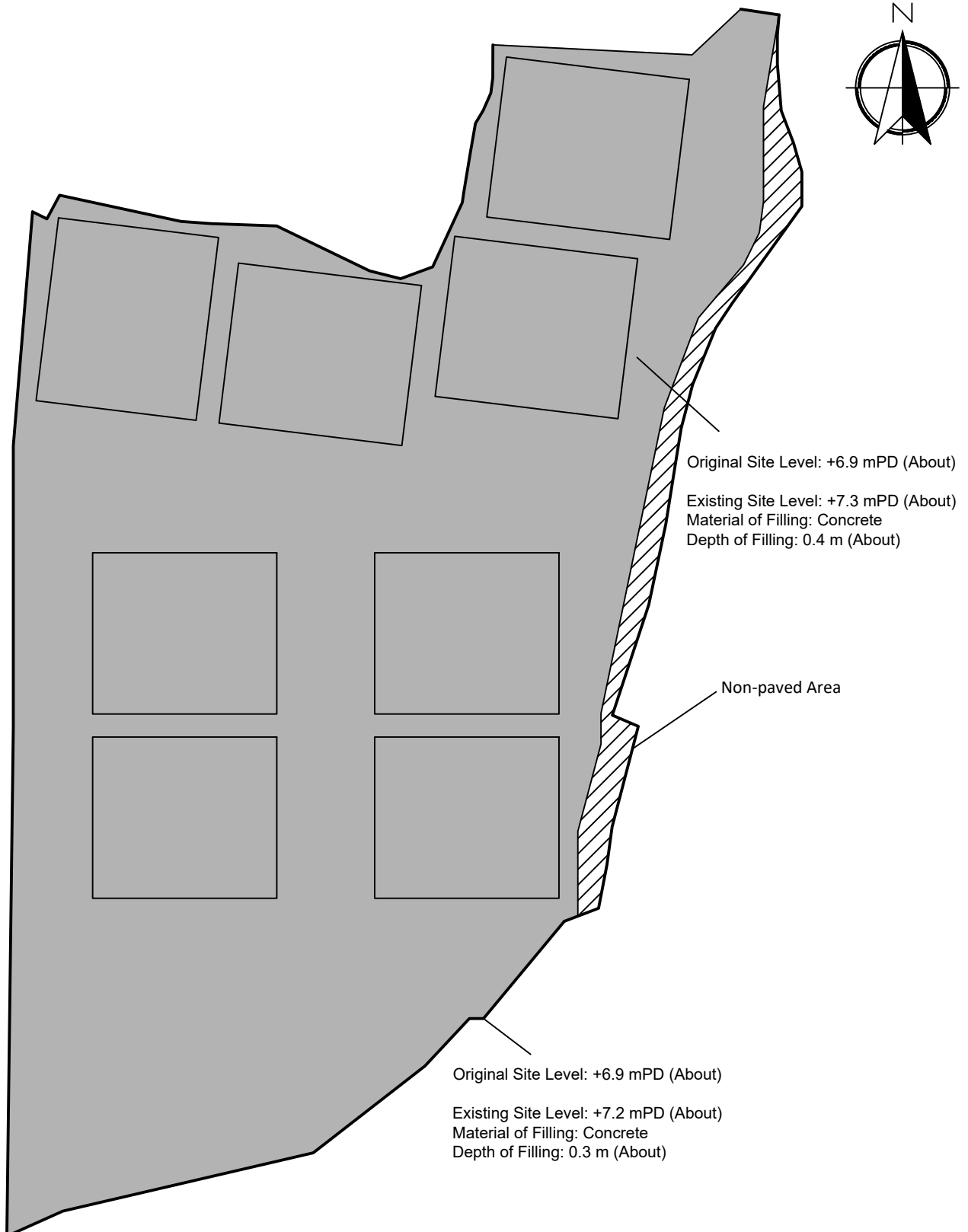
Date: 12/05/2026



Scale: Undefined @A4

Captured from map.gov.hk on 28th July 2025

<p>Appendix 3 Existing Vehicular Access</p>	<p>Location: D.D. 109 Lot 1354 (Part), 1356 (Part), 1373 (Part) 1374 (Part) and 1375 (Part) OZP: S/YL-KTN/11 District: Kam Tin North Zoning: Agriculture</p>	<p>Project: Proposed Temporary Warehouse (excluding Dangerous Goods Godown) with Ancillary Facilities and Associated Filling of Land for a Period of 3 Years</p>	<p>Width of Kong Po Road: 6m (About) Map Legend: ●●●● Road Path — Site Boundary</p>	<p>Drawing No.: 3-01 For Identification Only Date: 14/05/2026</p>
--	--	--	---	---



Legend:

- Regularization Area (Filled with Concrete)
- Non-Paved Area

Paved Ratio

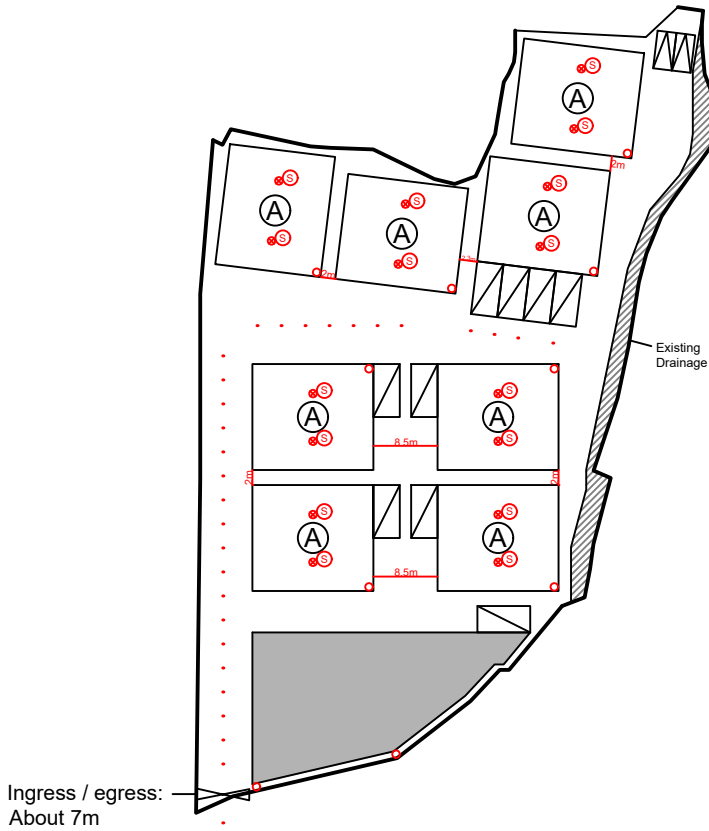
Non-Paved Area: 157.9 m² (About 3.3%)
Paved Area: 4,577.1 m² (About 96.7%)

<p><u>Appendix 4</u></p> <p>Location: DD 109 Lot 1354 (Part) DD 109 Lot 1356 (Part) DD 109 Lot 1373 (Part) DD 109 Lot 1374 (Part) DD 109 Lot 1375 (Part)</p> <p>OZP: S/YL-KTN/11 District: Kam Tin North Zoning: Agriculture</p> <p>Date: 12 May 2026</p>	<p><u>Filling of Land Area</u></p> <p>擬議臨時貨倉（危險品倉庫除外）連附屬設施和相關填土工程（為期3年）</p> <p>Proposed Temporary Warehouse (excluding Dangerous Goods Godown) with Ancillary Facilities and Associated Filling of Land for a Period of 3 Years</p>	<p><u>SCALE</u></p> <p>1:500</p> <p>@A4</p>
		For Identification Only
		Drawing No.: 4-01

Proposed Structures Details



	Structures	Gross Floor Area (GFA)	Height (Not Exceeding)	Unit(s)
A	Warehouse (excluding D.G.G) with Ancillary Office	About 16m x 14m = 224 m ²	8m	8
	Total	About 1,792 m ²		
	Ancillary Open Storage Area	About 474 m ²		
	Private Car Parking Space	5m x 2.5m		2
	LGV L/UL Space	7m x 3.5m		9



1. All FSI (includes installation/maintenance/modification/repair work) will be completed by RFSIC.
2. For Emergency Vehicular Access, Please see Appendix 7.1
3. All the enclosed structures are provided with access for emergency vehicles to reach within 30m travel distance from the structures.
4. THE STANDALONE FIRE DETECTOR SHALL BE PROVIDED IN ACCORDANCE WITH THE STAND-ALONE FIRE DETECTOR GENERAL GUIDELINES ON PURCHASE, INSTALLATION AND MAINTENANCE [SEP 2021].
5. WHERE TWO OR MORE STAND-ALONE FIRE DETECTORS ARE INSTALLED IN AN ENCLOSED STRUCTURE, ALL STAND-ALONE DETECTORS SHALL BE INTERCONNECTED (EITHER WIRED OR WIRELESSLY) SUCH THAT WHEN ONE OF THE STAND-ALONE FIRE DETECTOR IS TRIGGERED, ALL CONNECTED STAND-ALONE FIRE DETECTORS SHALL SOUND AN ALARM SIMULTANEOUSLY.

Legend:

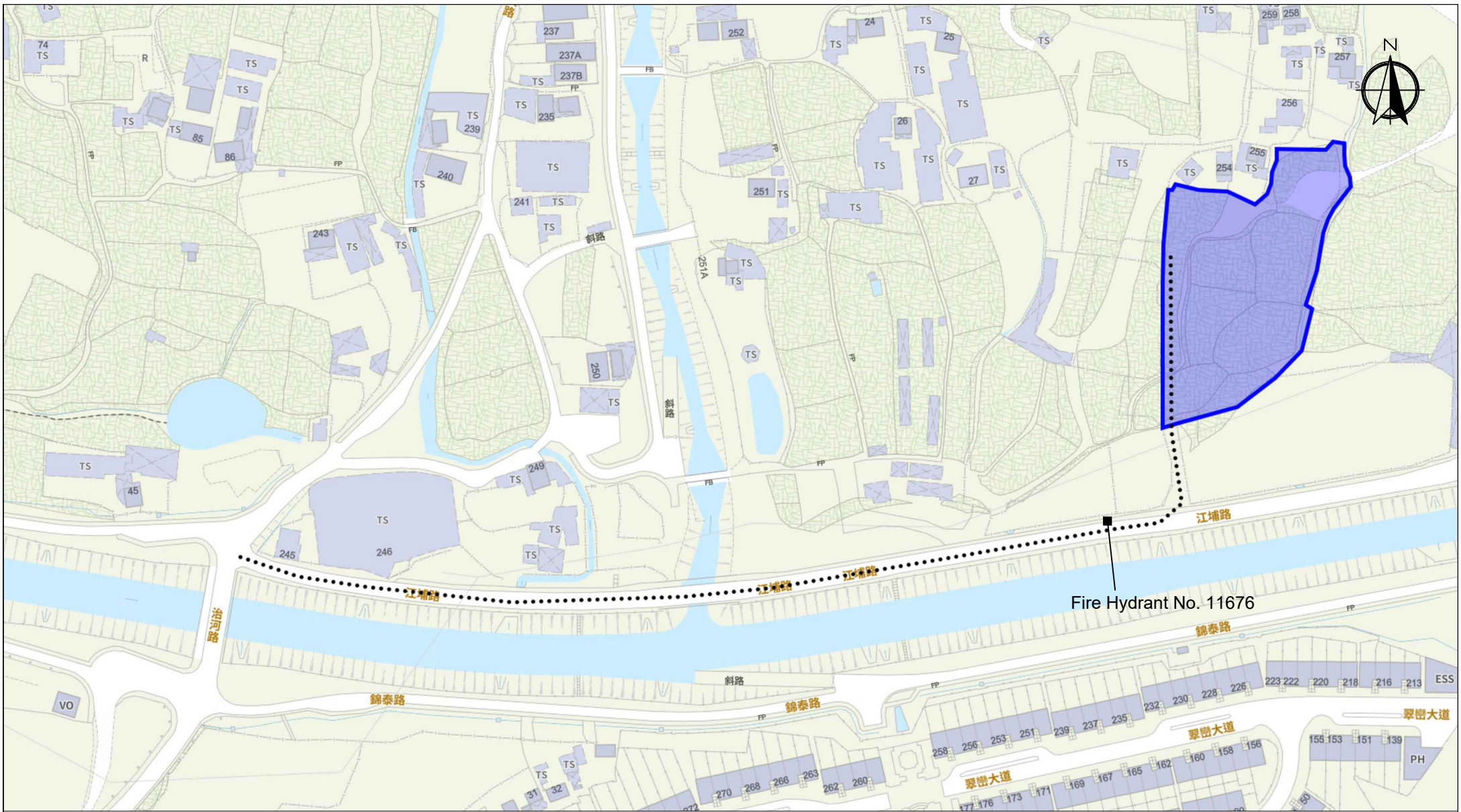
- 3 kg Portable Dry Powder Type Fire Extinguisher (10 in Total)
- S Stand-alone Fire Detector (Smoke Detector) (In accordance with the Stand-alone Fire Detector General Guidelines on Purchase, Installation & Maintenance [Sep 2021]) (16 in Total)
- ⋯⋯⋯ Emergency Vehicular Access
- A Warehouse (Excluding D.G.G.) with Ancillary Office
- Private Car Parking Space
- Ancillary Open Storage Area
- LGV L/UL Space

Appendix 7
 Location: DD 109 Lot 1354 (Part)
 DD 109 Lot 1356 (Part)
 DD 109 Lot 1373 (Part)
 DD 109 Lot 1374 (Part)
 DD 109 Lot 1375 (Part)
 OZP: S/YL-KTN/11
 District: Kam Tin North
 Zoning: Agriculture
 Date: 12 May 2026

Proposed Fire Service Installation Plan
 擬議消防設備安裝計劃圖
 擬議臨時貨倉 (危險品倉庫除外)
 連附屬設施和相關填土工程
 (為期3年)
 Proposed Temporary Warehouse (excluding Dangerous Goods Godown) with Ancillary Facilities and Associated Filling of Land for a Period of 3 Years

SCALE
 1:1000
 @A4

For Identification Only	Drawing No.:
	7



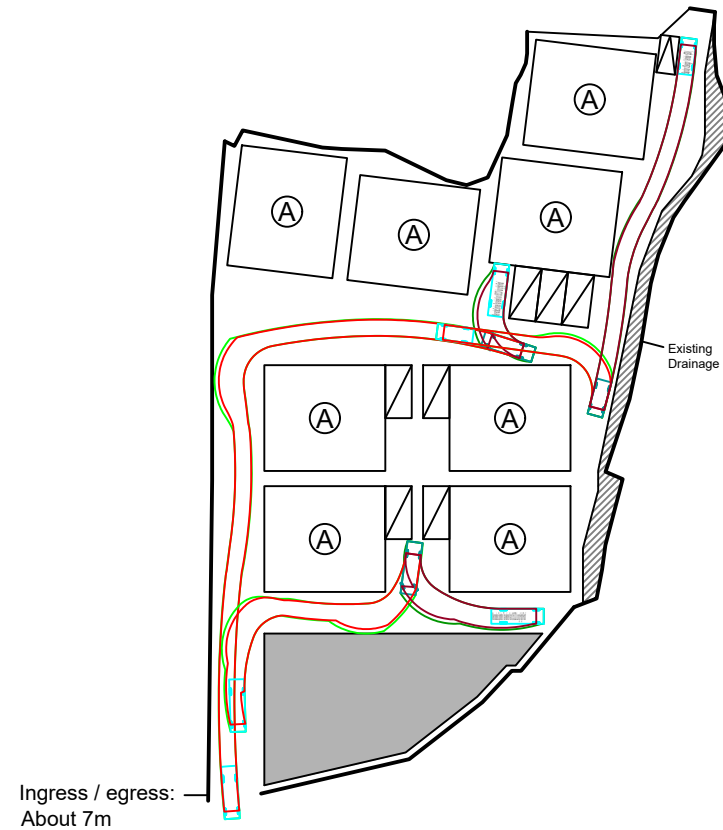
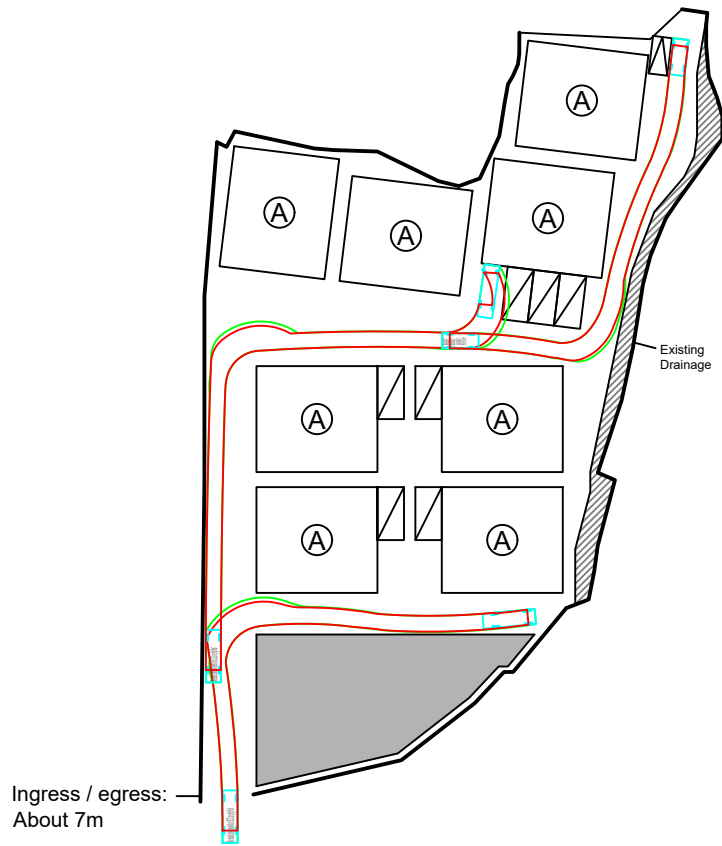
Scale: Undefined @A4

Captured from map.gov.hk on 28th July 2025

<p>Appendix 7.1 Emergency Vehicular Access</p>	<p>Location: D.D. 109 Lot 1354 (Part), 1356 (Part), 1373 (Part) 1374 (Part) and 1375 (Part) OZP: S/YL-KTN/11 District: Kam Tin North Zoning: Agriculture</p>	<p>Project: Proposed Temporary Warehouse (excluding Dangerous Goods Godown) with Ancillary Facilities and Associated Filling of Land for a Period of 3 Years</p>	<p>Width of Kong Po Road: 6m (About) Map Legend: ●●●● Road Path — Site Boundary</p>	<p>Drawing No.: 7.1 For Identification Only Date: 12/05/2026</p>
---	--	--	---	--

Vehicle In

Vehicle Out



Swept Path Analysis

Type of Vehicle : Light Goods Vehicle
 Dimension of Vehicle : 2 m (W) x 7 m (L)

Type of Vehicle : Private Car
 Dimension of Vehicle : 2 m (W) x 5 m (L)

Swept Paths Generated by Autodesk Vehicle Tracking

Swept Path Analysis

Type of Vehicle : Light Goods Vehicle
 Dimension of Vehicle : 2 m (W) x 7 m (L)

Type of Vehicle : Private Car
 Dimension of Vehicle : 2 m (W) x 5 m (L)

Swept Paths Generated by Autodesk Vehicle Tracking

Appendix 8

Location: D.D. 109 Lot 1354 (Part), 1356 (Part), 1373 (Part)
 1374 (Part) and 1375 (Part)
 OZP: S/YL-KTN/11
 District: Kam Tin North
 Zoning: Agriculture

Project:
 Proposed Temporary Warehouse (excluding
 Dangerous Goods Godown) with Ancillary Facilities
 and Associated Filling of Land for a Period of 3
 Years

Legend:

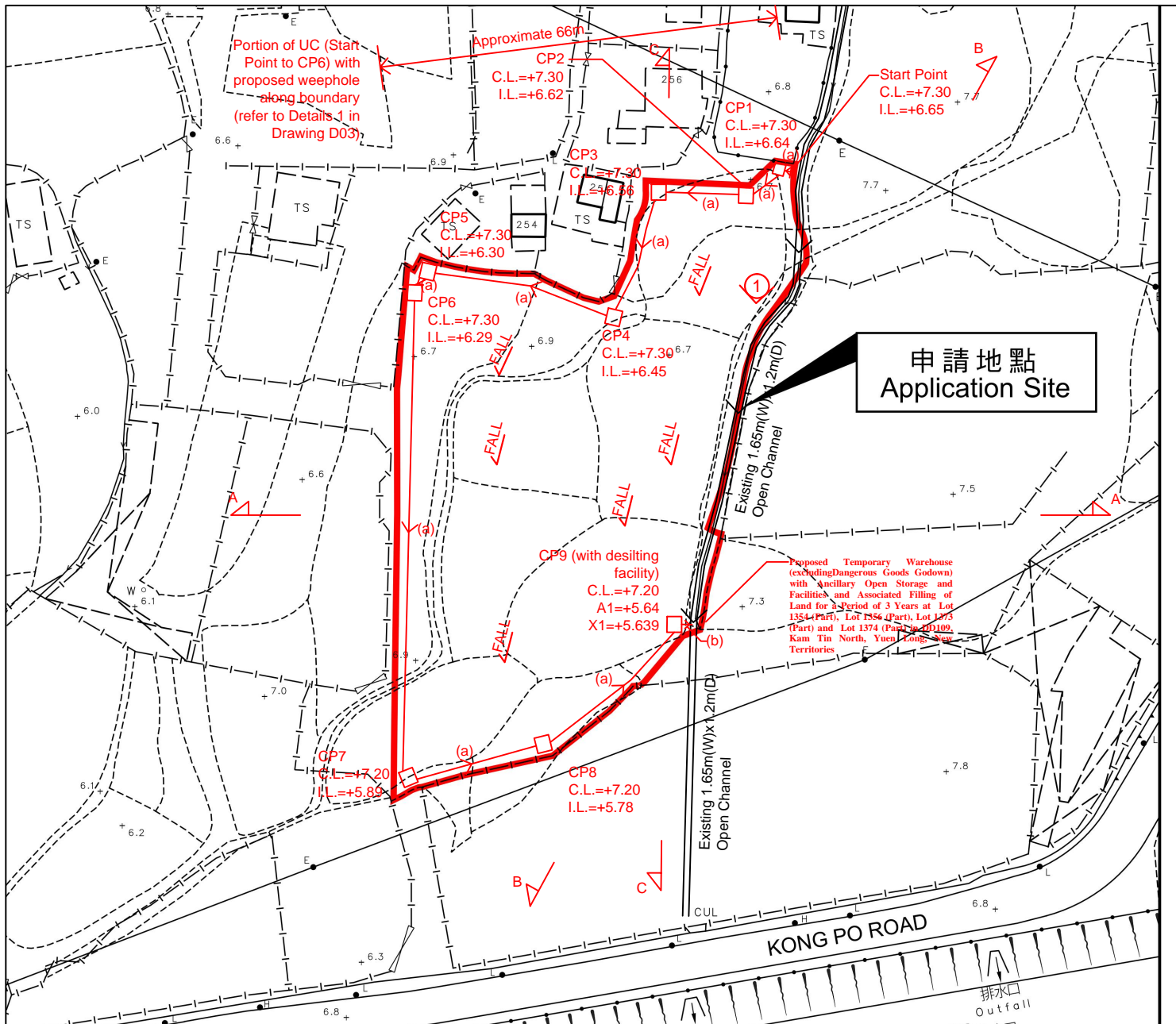
- Proposed Structures
- Open Storage (OS) Area
- Scale: 1:1000 @A4

Drawing No.:
8

For Identification Only

Date: 12/05/2026

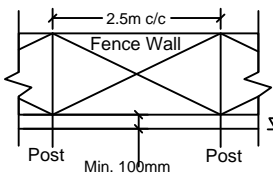
Swept Path Analysis



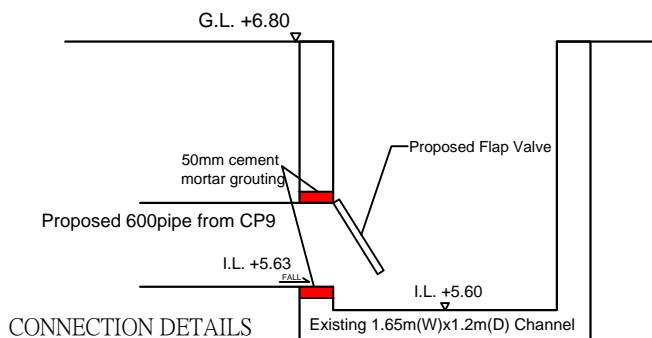
- Note:**
- Catchpits (CP9) with desilting facility shall follow CEDD standard drawing No. C2406I.
 - Catchpit and UC shall follow CEDD standard drawing No.2405 and 2409J respectively.
 - Open-bottom type fence wall to be erected.
 - There is no site formation works. Filling works to be carried out to leveling the site.
 - The debris in the existing 1.65m(W)x1.2m(D) open channel shall be removed.

LEGEND

- CP Proposed CatchPit
- (a) Proposed 600UC (1:200) with Cast Iron Cover
- (b) Proposed 600mm dia. concrete pipe (1:100)
- Existing 1.65m(W)x1.2m(D) Open Channel
- Photo Viewport



TYPICAL DETAIL OF OPEN-BOTTOM TYPE FENCE WALL



CONNECTION DETAILS

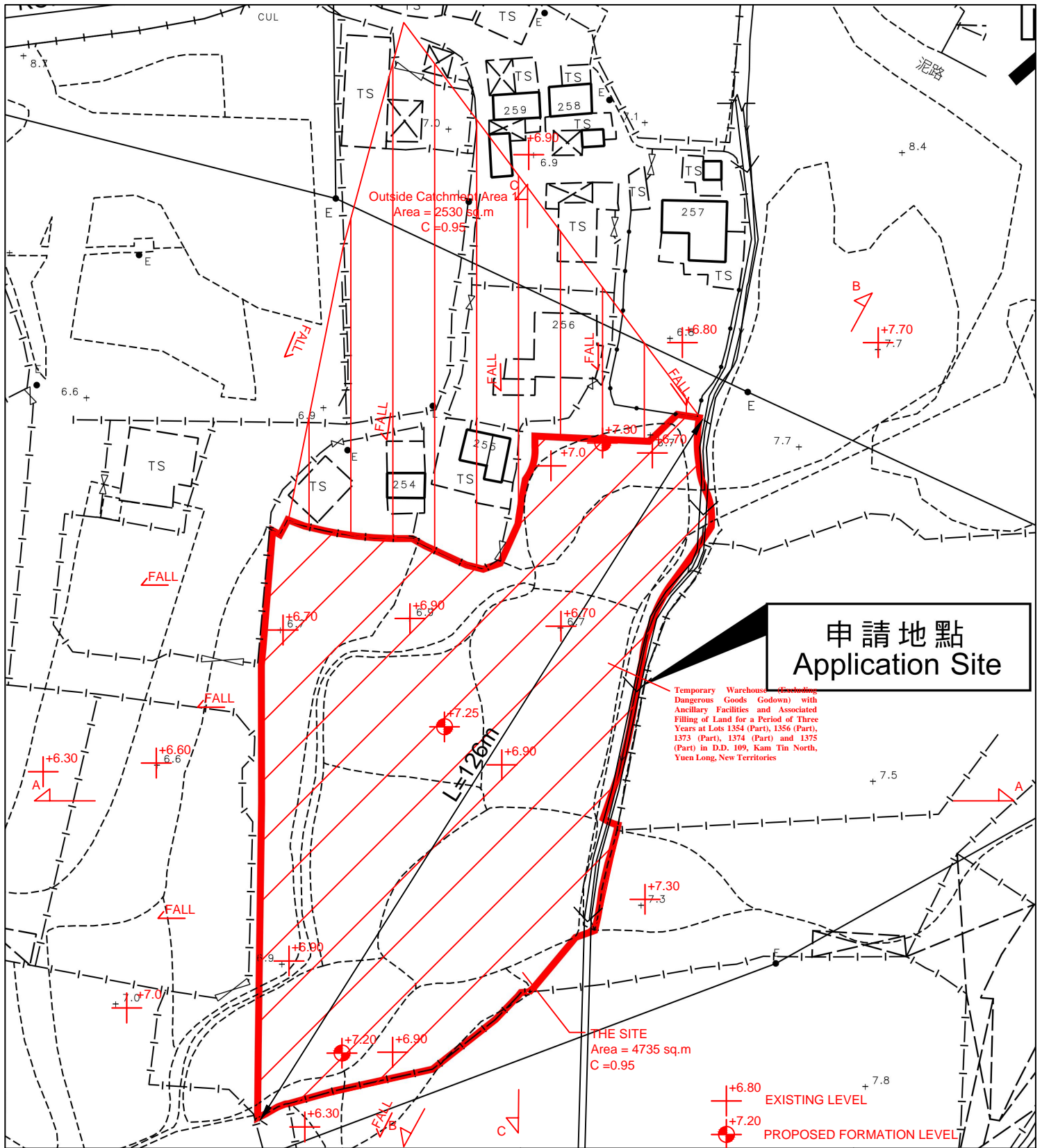
Title:	
Drainage Proposal - LAYOUT	D01

Project
Temporary Warehouse (Excluding Dangerous Goods Godown) with Ancillary Facilities and Associated Filling of Land for a Period of Three Years at Lots 1354 (Part), 1356 (Part), 1373 (Part), 1374 (Part) and 1375 (Part) in D.D. 109, Kam Tin North, Yuen Long, New Territories
(Application Number: A/YL-KTN/1157)

Drawn by:	Date:
DM	19-5-2026

正宏工程顧問公司

CHING WAN ENGINEERING CONSULTANT COMPANY



申請地點
Application Site

Temporary Warehouse (Excluding Dangerous Goods Godown) with Ancillary Facilities and Associated Filling of Land for a Period of Three Years at Lots 1354 (Part), 1356 (Part), 1373 (Part), 1374 (Part) and 1375 (Part) in D.D. 109, Kam Tin North, Yuen Long, New Territories

THE SITE
Area = 4735 sq.m
C = 0.95

+6.80 EXISTING LEVEL
+7.20 PROPOSED FORMATION LEVEL

Project:
Temporary Warehouse (Excluding Dangerous Goods Godown) with Ancillary Facilities and Associated Filling of Land for a Period of Three Years at Lots 1354 (Part), 1356 (Part), 1373 (Part), 1374 (Part) and 1375 (Part) in D.D. 109, Kam Tin North, Yuen Long, New Territories

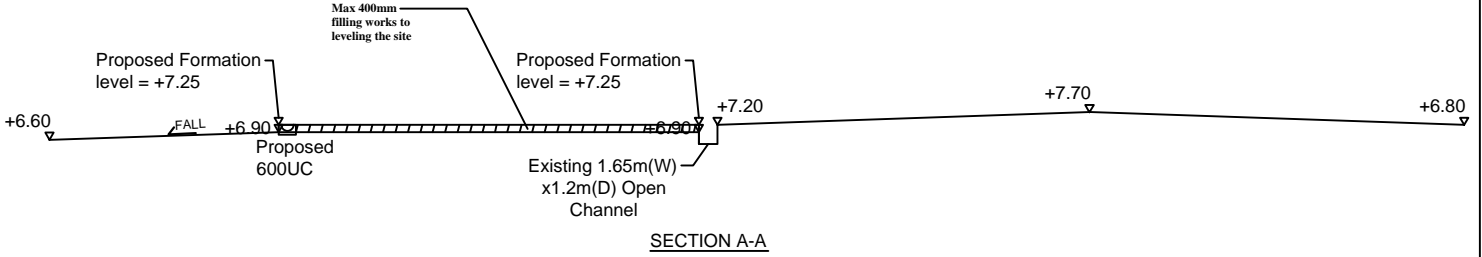
(Application Number: A/YL-KTN/1157)

Title:
Catchment Area Plan
D02

Drawn by: DM
Date: 19-5-2026

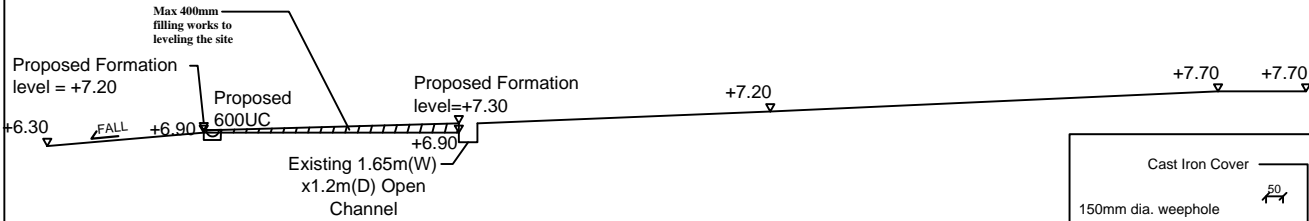
正宏工程顧問公司
CHING WAN ENGINEERING CONSULTANT COMPANY

Temporary Warehouse (Excluding Dangerous Goods Godown) with Ancillary Facilities and Associated Filling of Land for a Period of Three Years at Lots 1354 (Part), 1356 (Part), 1373 (Part), 1374 (Part) and 1375 (Part) in D.D. 109, Kam Tin North, Yuen Long, New Territories



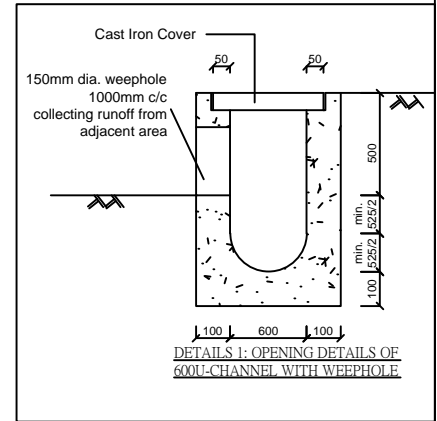
SECTION A-A

Temporary Warehouse (Excluding Dangerous Goods Godown) with Ancillary Facilities and Associated Filling of Land for a Period of Three Years at Lots 1354 (Part), 1356 (Part), 1373 (Part), 1374 (Part) and 1375 (Part) in D.D. 109, Kam Tin North, Yuen Long, New Territories

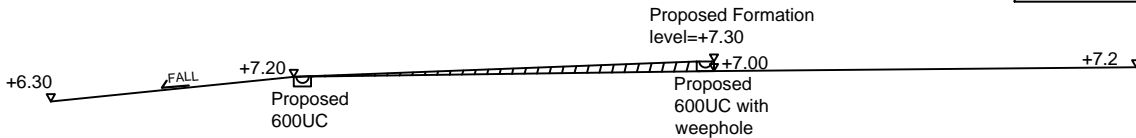


SECTION B-B

Temporary Warehouse (Excluding Dangerous Goods Godown) with Ancillary Facilities and Associated Filling of Land for a Period of Three Years at Lots 1354 (Part), 1356 (Part), 1373 (Part), 1374 (Part) and 1375 (Part) in D.D. 109, Kam Tin North, Yuen Long, New Territories



DETAILS 1: OPENING DETAILS OF 600U-CHANNEL WITH WEEPHOLE



SECTION C-C

Project:
Temporary Warehouse (Excluding Dangerous Goods Godown) with Ancillary Facilities and Associated Filling of Land for a Period of Three Years at Lots 1354 (Part), 1356 (Part), 1373 (Part), 1374 (Part) and 1375 (Part) in D.D. 109, Kam Tin North, Yuen Long, New Territories

(Application Number: A/YL-KTN/1157)

Title:

SECTIONS

D03

Drawn by:

DM

Date:

21-3-2026

正宏工程顧問公司

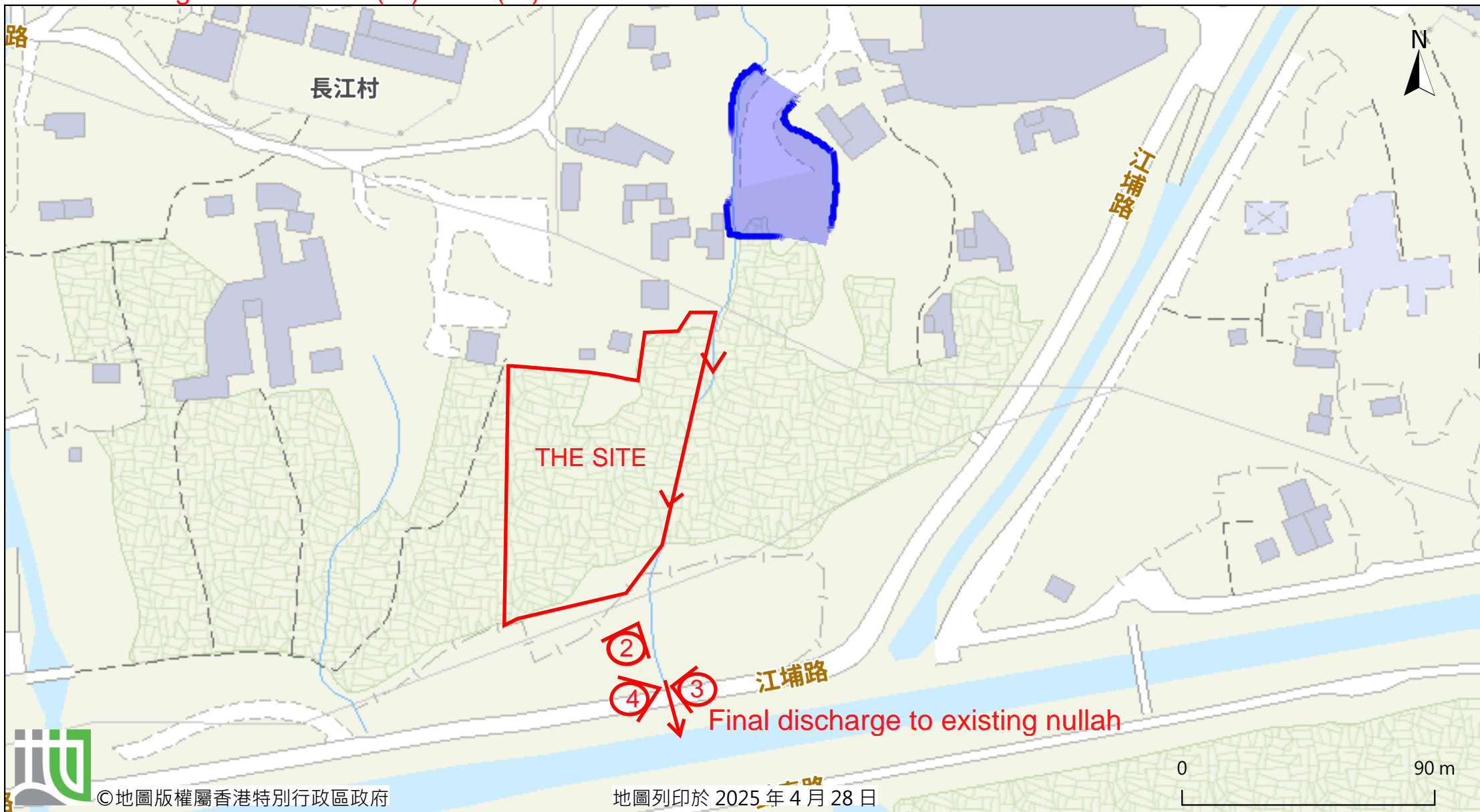
CHING WAN ENGINEERING CONSULTANT COMPANY

Photo 1





Final discharge of Ex. 1.65m(W)x1.2D(W)



地圖列印於 2025 年 4 月 28 日

Photo 2



Photo 3



Photo 4



Outside Catchment Area 1, Area = 2530 m² (C= 0.95)
 THE SITE, Area = 4735 m² (C= 0.95)

Calculation of Design Runoff of the Proposed Development,

For the design of drains inside the site, Outside Catchment Area 1 + The Site

$$\Sigma Q = \Sigma 0.278 C i A$$

$$A = 2530+4735 \text{ m}^2$$

$$= 7265$$

$$= 0.007265 \text{ km}^2$$

$$t = 0.14465 L / H^{0.2} A^{0.1}$$

$$= 0.14465 * 126 / 1^{0.2} * 7265^{0.1}$$

$$= 7.491 \text{ min}$$

$$i = 1.16 * a / (t+b)^c \quad (50 \text{ yrs return period, Table 3a, Corrigendum 2024, SDM) and (16\% increase due to climate change)}$$

$$= 1.16 * 505.5 / (7.491 + 3.29)^{0.355}$$

$$= 252.1 \text{ mm/hr}$$

Therefore, $Q = 0.278 * 0.95 * 252.1 * 0.007265 / 0.9$ (0.9 factor is adopted for sedimentation)

$$= 0.5375 \text{ m}^3/\text{sec}$$

$$= \underline{32247} \text{ lit/min}$$

Provide 600UC (1:200) is OK

For checking proposed weephole, Outside Catchment Area 1

$$\Sigma Q = \Sigma 0.278 C i A$$

$$A = 2530 \text{ m}^2$$

$$= 0.00253 \text{ km}^2$$

$$i = 252.1 \text{ mm/hr}$$

Therefore, $Q = 0.278 * 0.95 * 252.0 * 0.002442 / 0.9$ (0.9 factor is adopted for sedimentation)

$$= 0.1872 \text{ m}^3/\text{sec}$$

$$= \underline{11230} \text{ lit/min}$$

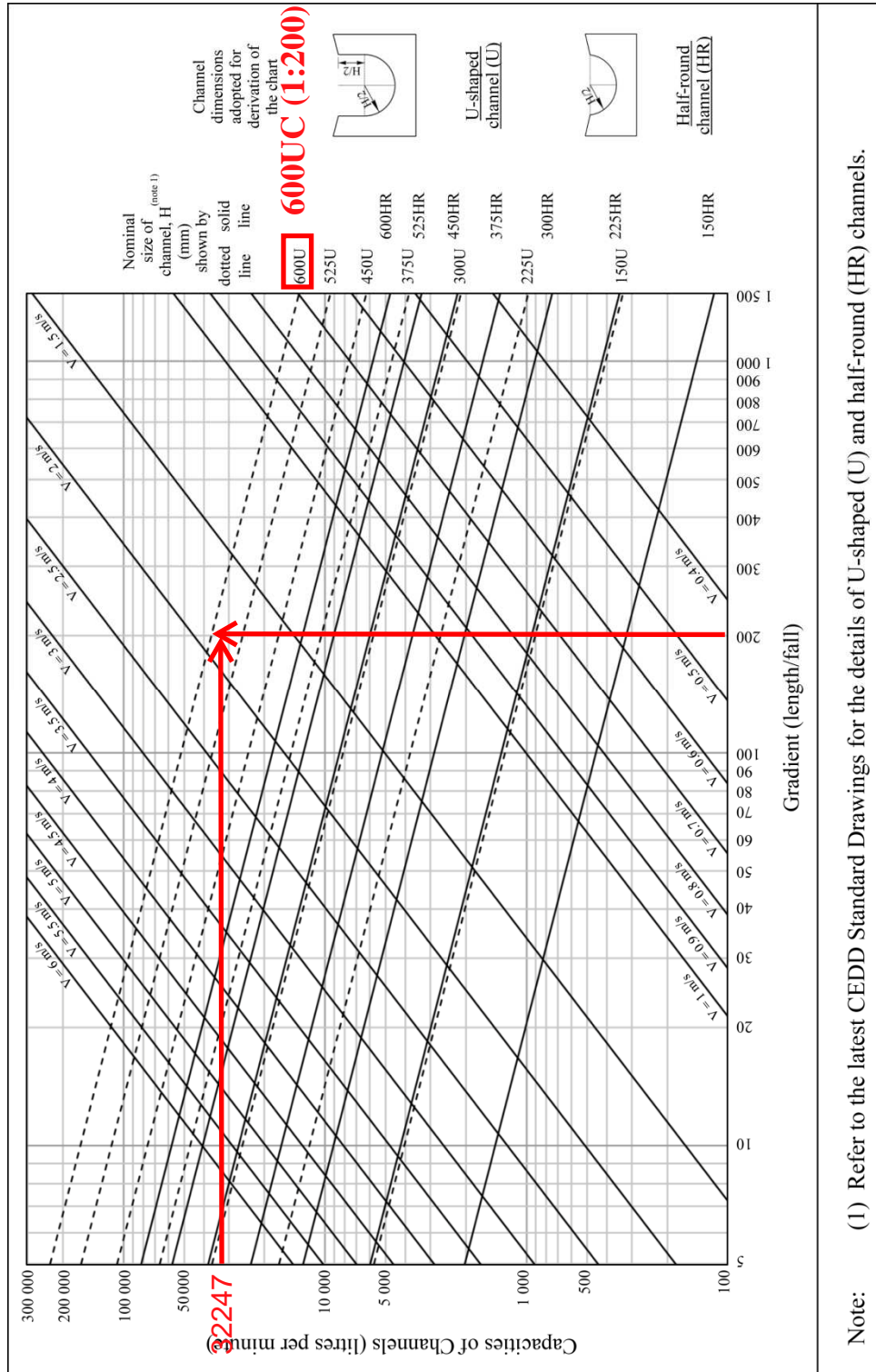
67nos 150mm dia. weephole (1:100) is OK

GEO Technical Guidance Note No. 43 (TGN 43)
Guidelines on Hydraulic Design of U-shaped and Half-round Channels on Slopes

Issue No.: 1 Revision: - Date: 05.06.2014 Page: 3 of 3

Flow velocity (v), 1.5 < v < 2m/s

Figure 1 - Chart for the rapid design of U-shaped and half-round channels up to 600 mm



Check 600mm dia. Pipes by Colebrook-White Equation

$$V = -\sqrt{(8gDs)} \log\left(\frac{ks}{3.7D} + \frac{2.51v}{D\sqrt{(2gDs)}}\right)$$

where :

V	=		mean velocity (m/s)	
g	=	9.81	m/s ² gravitational acceleration (m/s ²)	
D	=	0.6	m internal pipe diameter (m)	
ks	=	0.00015	m hydraulic pipeline roughness (m)	(Table14, from DSD SDM 2018, concrete pipe)
v	=	1.14E-06	m ² /s kinematic viscosity of fluid (m ² /s)	
s	=	0.01	hydraulic gradient	

Therefore, design V of pipe capacity = 2.8059 m/s

Q= 0.8VA		(0.8 factor for sedimentation)
= 0.635	m ³ /s	
= 38081	lit/min	
> 32247	lit/min	Ok

Check 150mm dia. weephole Colebrook-White Equation

$$V = -\sqrt{(8gDs)} \log\left(\frac{ks}{3.7D} + \frac{2.51v}{D\sqrt{(2gDs)}}\right)$$

where :

V	=		mean velocity (m/s)
g	=	9.81	m/s ² gravitational acceleration (m/s ²)
D	=	0.15	m internal pipe diameter (m)
ks	=	0.00015	m hydraulic pipeline roughness (m) (Table14, from DSD SDM 2018, concrete pipe)
v	=	1.14E-06	m ² /s kinematic viscosity of fluid (m ² /s)
s	=	0.01	hydraulic gradient

Therefore, design V of pipe capacity = 1.1729 m/s

Q= 0.8VA (0.8 factor for sedimentation)

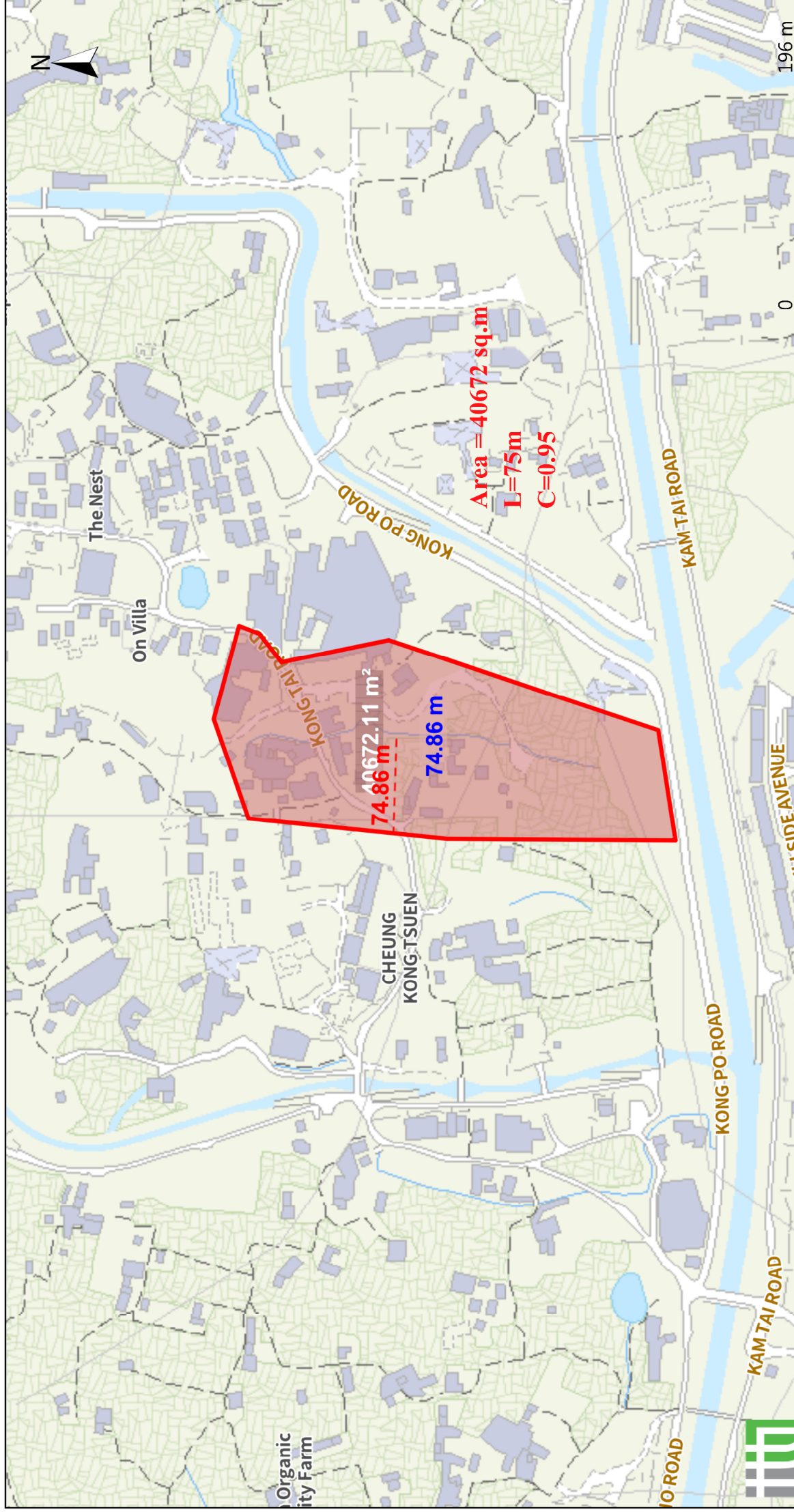
= 0.017 m³/s

= 995 lit/min

total 66m length, 1m c/c, 67 nos of weepholes, Total Q= 67x995= 66658 lit/min

> 11230 lit/min Ok

Catchment Area Plan for Existing 1.65m(W)x1.2m(D) Open Channel



Catchment Area = 40672 m² (C= 0.95)

Calculation of Design Runoff

For checking the existing 1.65m(W)x1.2m(D) Open Channel

$$\Sigma Q = \Sigma 0.278 C i A$$

$$A = 40672 \text{ m}^2$$

$$= 40672$$

$$= 0.040672 \text{ km}^2$$

$$t = 0.14465 L / H^{0.2} A^{0.1}$$

$$= 0.14465 * 75 / 1^{0.2} * 40672^{0.1}$$

$$= 3.754 \text{ min}$$

$$i = 1.16 * a / (t + b)^c \quad (50 \text{ yrs return period, Table 3a, Corrigendum 2024, SDM) and (16\% increase due to climate change)$$

$$= 1.16 * 505.5 / (3.754 + 3.29)^{0.355}$$

$$= 293.2 \text{ mm/hr}$$

Therefore, $Q = 0.278 * 0.95 * 293.2 * 0.040672 / 0.9$

$$= 3.4997 \text{ m}^3/\text{sec}$$

$$= \mathbf{209983} \text{ lit/min}$$

Calculation Maximum Capacity of Existing 1.65m(W)x1.2m(D) Open Channel

Manning Equation $V = R^{2/3} * S_f^{0.5} / n$

where $R = WD / (W + 2D)$ $W = 1.65 \text{ m}$
 $= 0.4304 \text{ m}$ $D = 0.9 \text{ m}$ (300mm freeboard considered)
 $\text{Area} = WD = 1.485 \text{ m}^2$

$n = 0.016 \text{ s/m}^{1/3}$ (Table 13 of Stormwater Drainage Manual)

$S_f = 0.005$

Therefore, $V = 0.4304^{2/3} * 0.005^{0.5} / 0.016$

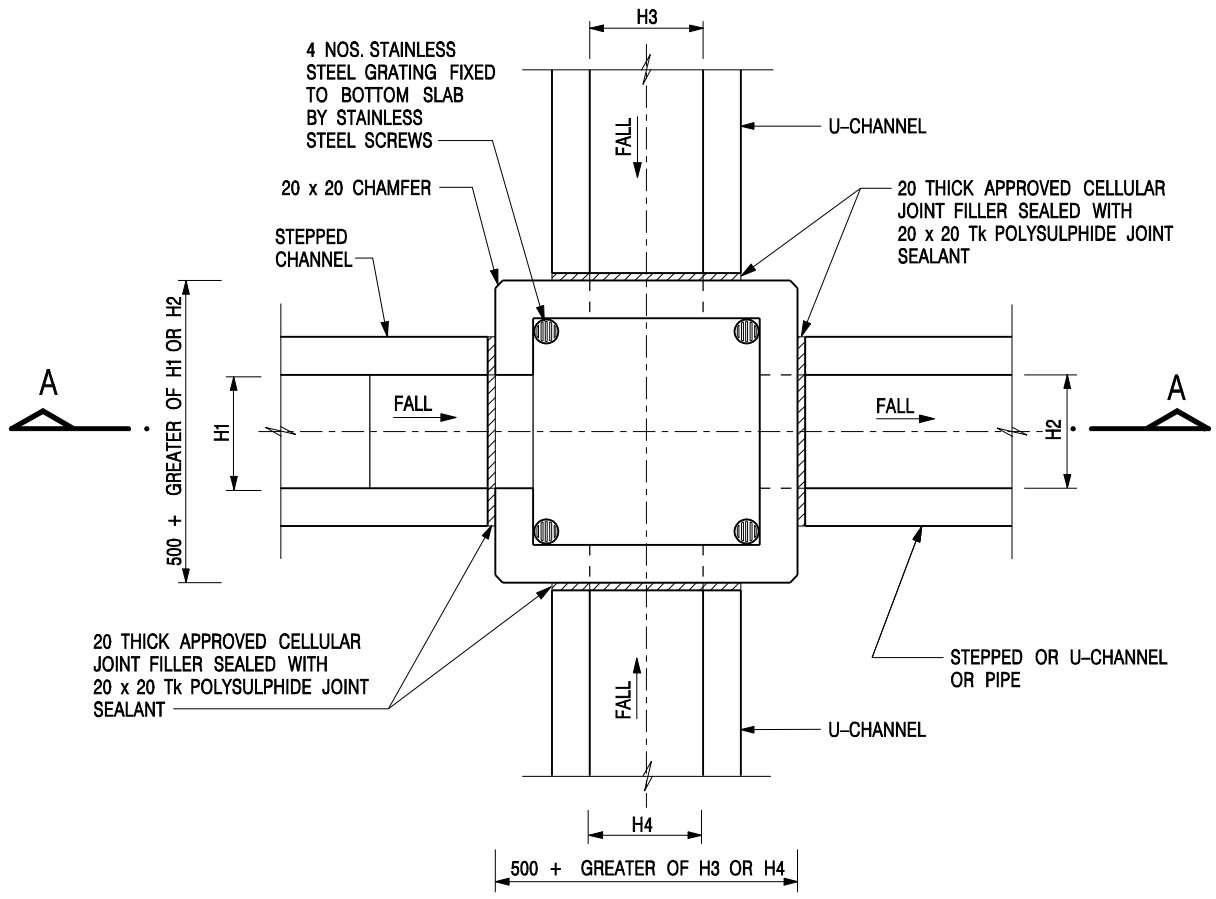
$$= 2.52 \text{ m/sec}$$

Maximum Capacity (Q_{\max}) = $V * A$

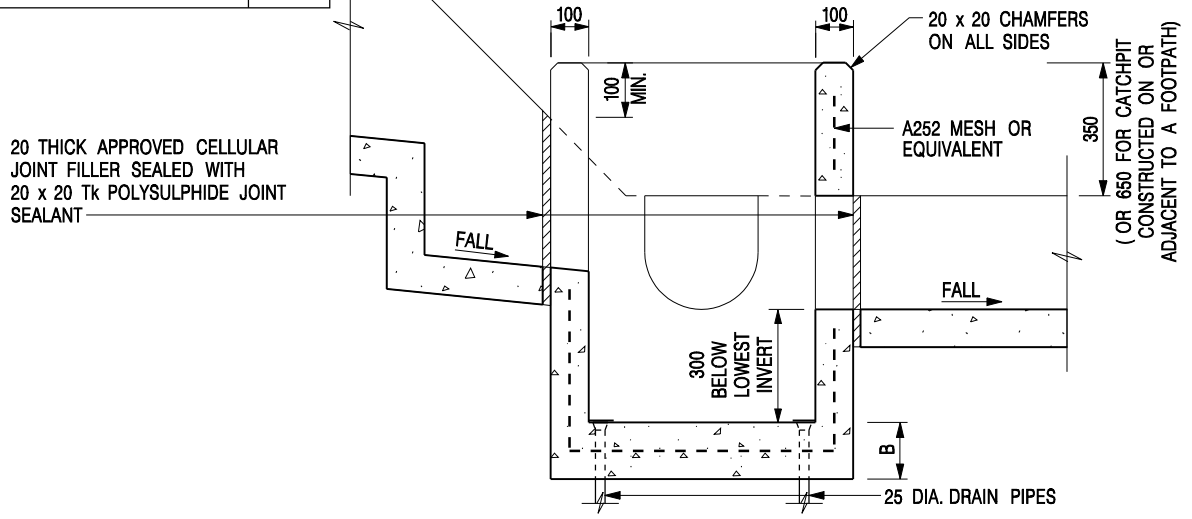
$$= 3.74 \text{ m}^3/\text{sec}$$

$$= 224482 \text{ lit/min}$$

$$> 209983 \text{ lit/min} \quad \text{OK}$$



NOMINAL SIZE (LARGEST OF H1, H2, H3 & H4)	B
300 - 600	150
675 - 900	175



SECTION A - A

NOTES:

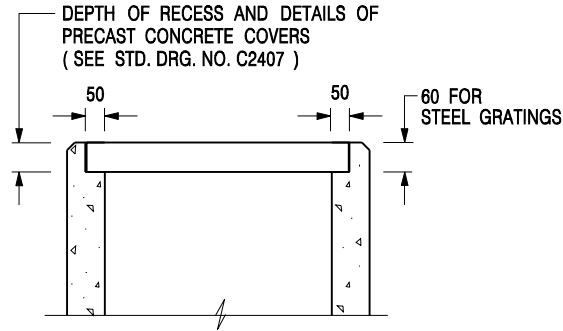
1. ALL DIMENSIONS ARE IN MILLIMETRES.
2. REFER TO SHEET 2 FOR OTHER NOTES.

**CATCHPIT WITH TRAP
(SHEET 1 OF 2)**

-	FORMER DRG. NO. C2406J.	Original Signed	03.2015
REF.	REVISION	SIGNATURE	DATE



SCALE 1 : 20	DRAWING NO.
DATE JAN 1991	C2406 /1




**ALTERNATIVE TOP SECTION
FOR PRECAST CONCRETE COVERS / GRATINGS**

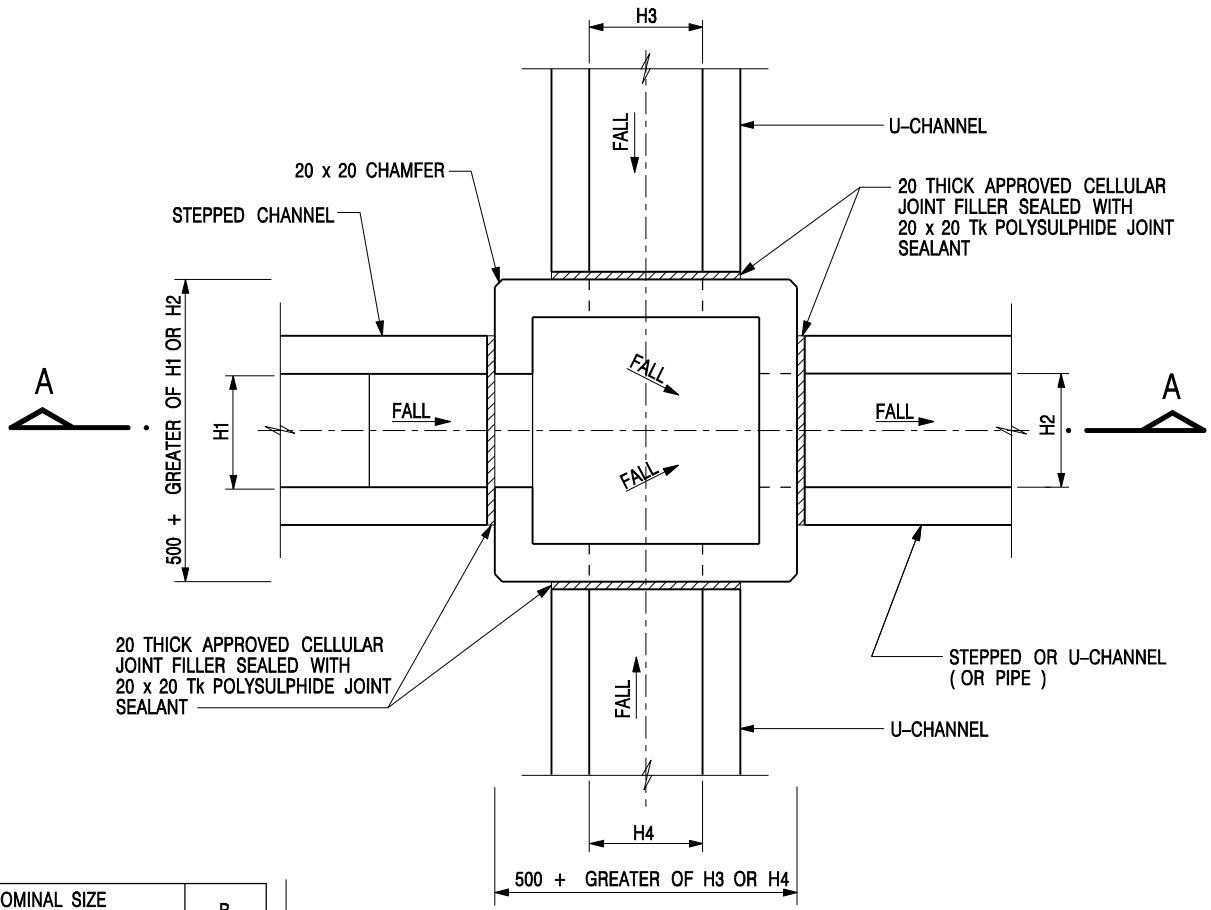
NOTES:

1. ALL DIMENSIONS ARE IN MILLIMETRES.
2. ALL CONCRETE SHALL BE GRADE 20 /20.
3. CONCRETE SURFACE FINISH SHALL BE CLASS U2 OR F2 AS APPROPRIATE.
4. FOR DETAILS OF JOINT, REFER TO STD. DRG. NO. C2413.
5. CONCRETE TO BE COLOURED AS SPECIFIED.
6. UNLESS REQUESTED BY THE MAINTENANCE PARTY AND AS DIRECTED BY THE ENGINEER, CATCHPIT WITH TRAP IS NORMALLY NOT PREFERRED DUE TO PONDING PROBLEM.
7. UPON THE REQUEST FROM MAINTENANCE PARTY, DRAIN PIPES AT CATCHPIT BASE CAN BE USED BUT THIS IS FOR CATCHPITS LOCATED AT SLOPE TOE ONLY AND AS DIRECTED BY THE ENGINEER.
8. FOR CATCHPITS CONSTRUCTED ON OR ADJACENT TO A FOOTPATH, STEEL GRATINGS (SEE DETAIL 'A' ON STD. DRG. NO. C2405 /2) OR CONCRETE COVERS (SEE STD. DRG. NO. C2407) SHALL BE PROVIDED AS DIRECTED BY THE ENGINEER.
9. IF INSTRUCTED BY THE ENGINEER, HANDRAILING (SEE DETAIL 'J' ON STD. DRG. NO. C2405 /5; EXCEPT ON THE UPSLOPE SIDE) IN LIEU OF STEEL GRATINGS OR CONCRETE COVERS CAN BE ACCEPTED AS AN ALTERNATIVE SAFETY MEASURE FOR CATCHPITS NOT ON A FOOTPATH NOR ADJACENT TO IT. TOP OF THE HANDRAILING SHALL BE 1 000 mm MIN. MEASURED FROM THE ADJACENT GROUND LEVEL.
10. MINIMUM INTERNAL CATCHPIT WIDTH SHALL BE 1 000 mm FOR CATCHPITS WITH A HEIGHT EXCEEDING 1 000 mm MEASURED FROM THE INVERT LEVEL TO THE ADJACENT GROUND LEVEL. AND, STEP IRONS (SEE DSD STD. DRG. NO. DS1043) AT 300 c/c STAGGERED SHALL BE PROVIDED. THICKNESS OF CATCHPIT WALL FOR INSTALLATION OF STEP IRONS SHALL BE INCREASED TO 150 mm.
11. FOR RETROFITTING AN EXISTING CATCHPIT WITH STEEL GRATING, SEE DETAIL 'G' ON STD. DRG. NO. C2405 /4.
12. SUBJECT TO THE APPROVAL OF THE ENGINEER, OTHER MATERIALS CAN ALSO BE USED AS COVERS / GRATINGS.

A	MINOR AMENDMENT.	Original Signed	04.2016
-	FORMER DRG. NO. C2406J.	Original Signed	03.2015
REF.	REVISION	SIGNATURE	DATE

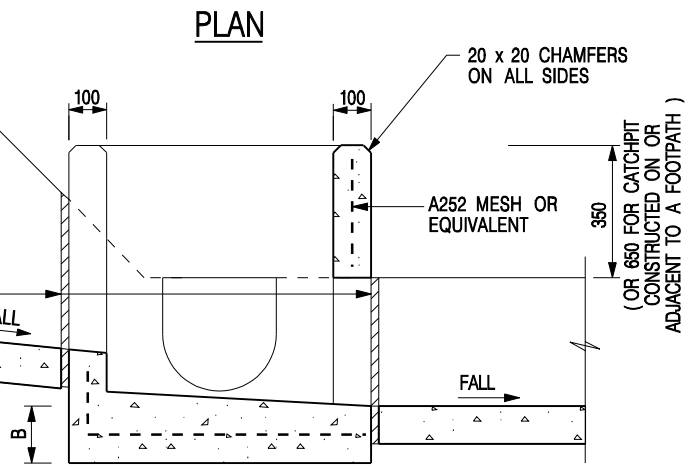
**CATCHPIT WITH TRAP
(SHEET 2 OF 2)**

 CIVIL ENGINEERING AND DEVELOPMENT DEPARTMENT	
SCALE 1 : 20	DRAWING NO.
DATE JAN 1991	C2406 /2A

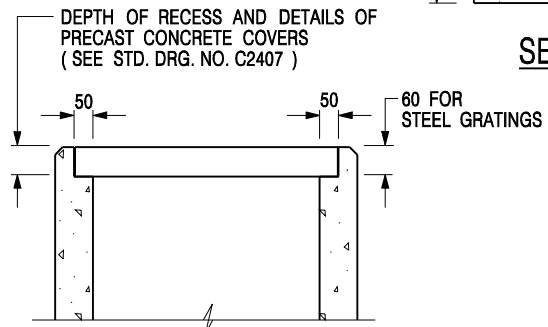


NOMINAL SIZE (LARGEST OF H1, H2, H3 & H4)	B
300 - 600	150
675 - 900	175

20 THICK APPROVED CELLULAR JOINT FILLER SEALED WITH 20 x 20 Tk POLYSULPHIDE JOINT SEALANT



SECTION A - A

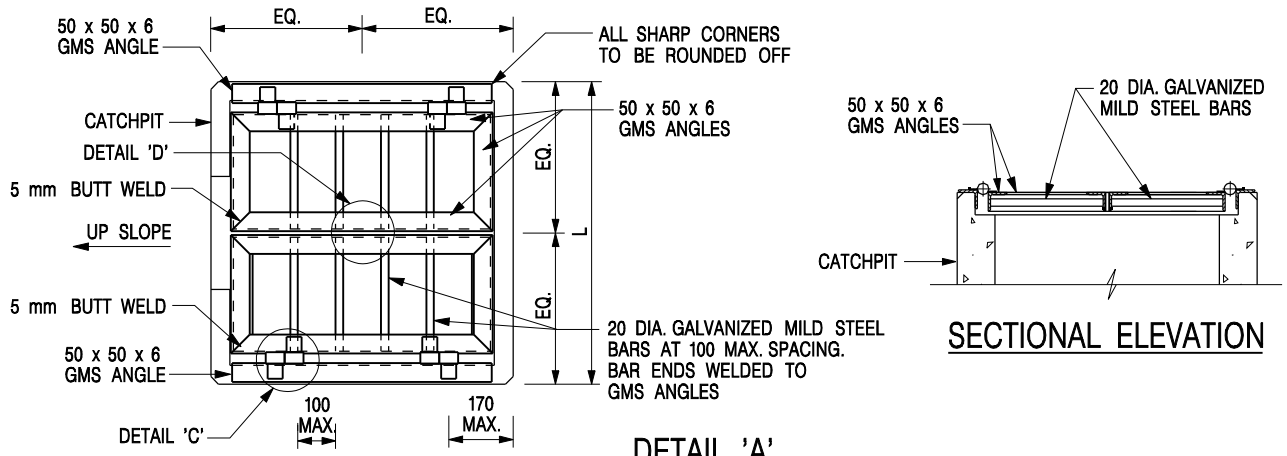


- NOTES:**
1. ALL DIMENSIONS ARE IN MILLIMETRES.
 2. REFER TO SHEET 5 FOR OTHER NOTES.

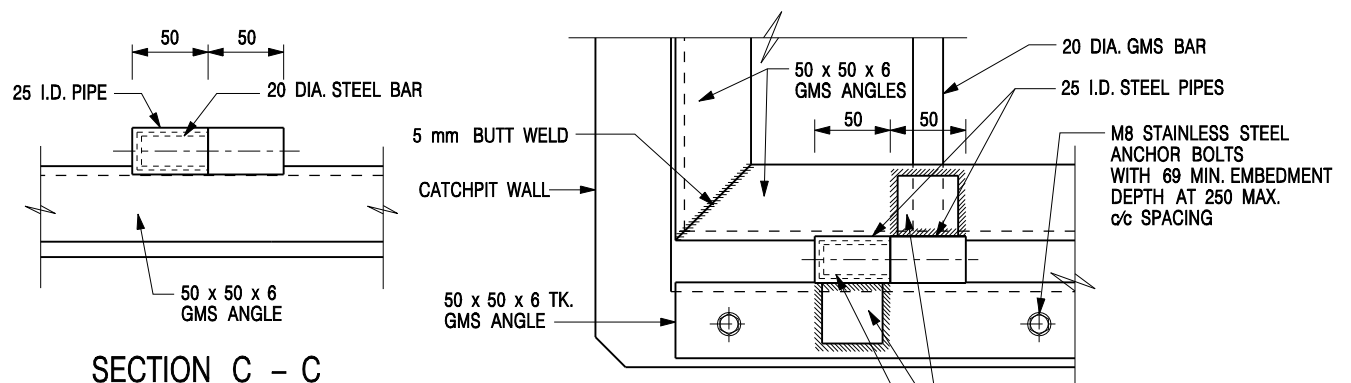
ALTERNATIVE TOP SECTION FOR PRECAST CONCRETE COVERS / GRATINGS

**STANDARD CATCHPIT DETAILS
(SHEET 1 OF 5)**

-	FORMER DRG. NO. C2405J.	Original Signed	03.2015
REF.	REVISION	SIGNATURE	DATE
CIVIL ENGINEERING AND DEVELOPMENT DEPARTMENT		SCALE 1 : 20 DATE JAN 1991	

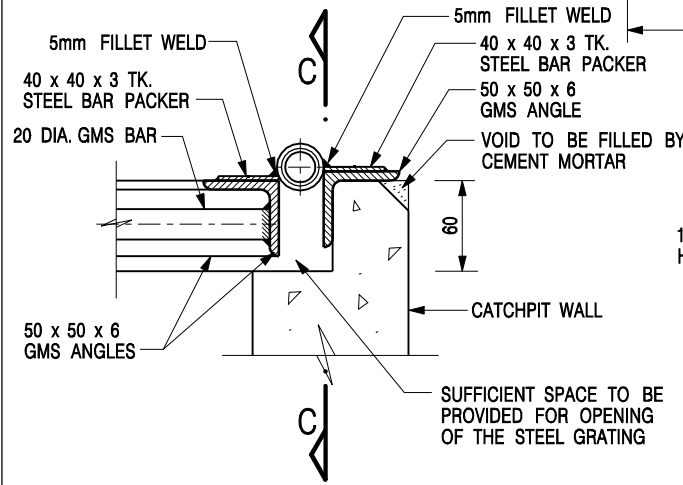


DETAIL 'A'
 (DETAILS OF DOUBLE SIDE OPENING STEEL GRATING FOR L > 900mm)
 SCALE 1 : 20

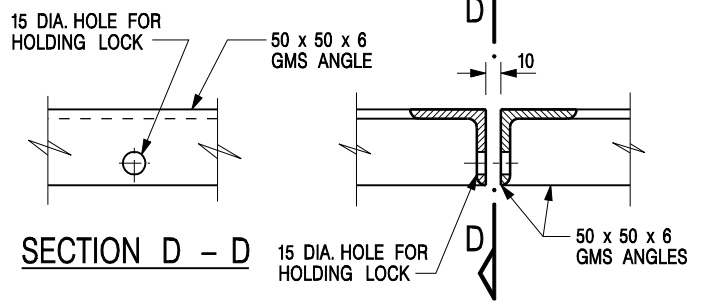


SECTION C - C

DETAIL 'C'
 (DETAILS OF HINGE)
 SCALE 1 : 5



SECTIONAL ELEVATION
 (DETAIL 'C')



SECTION D - D

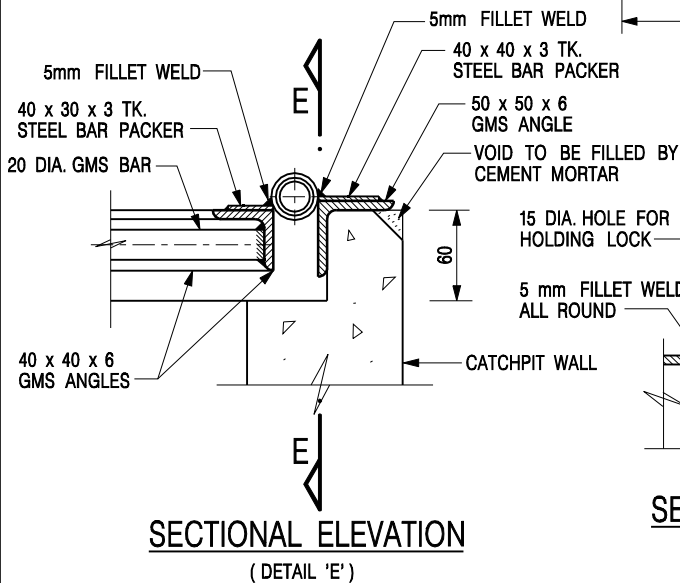
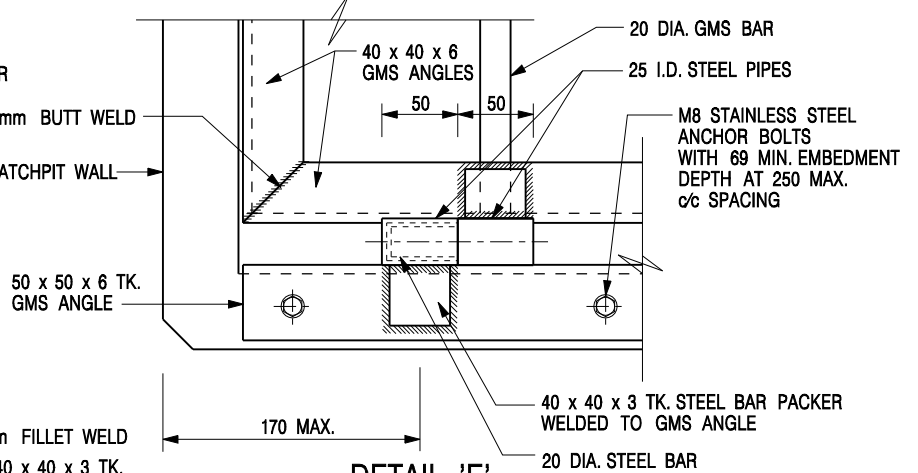
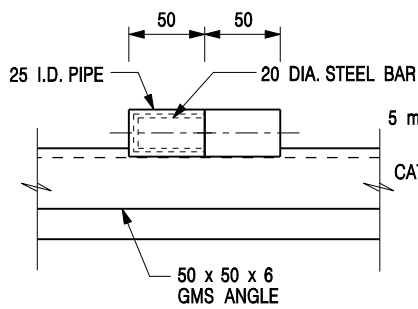
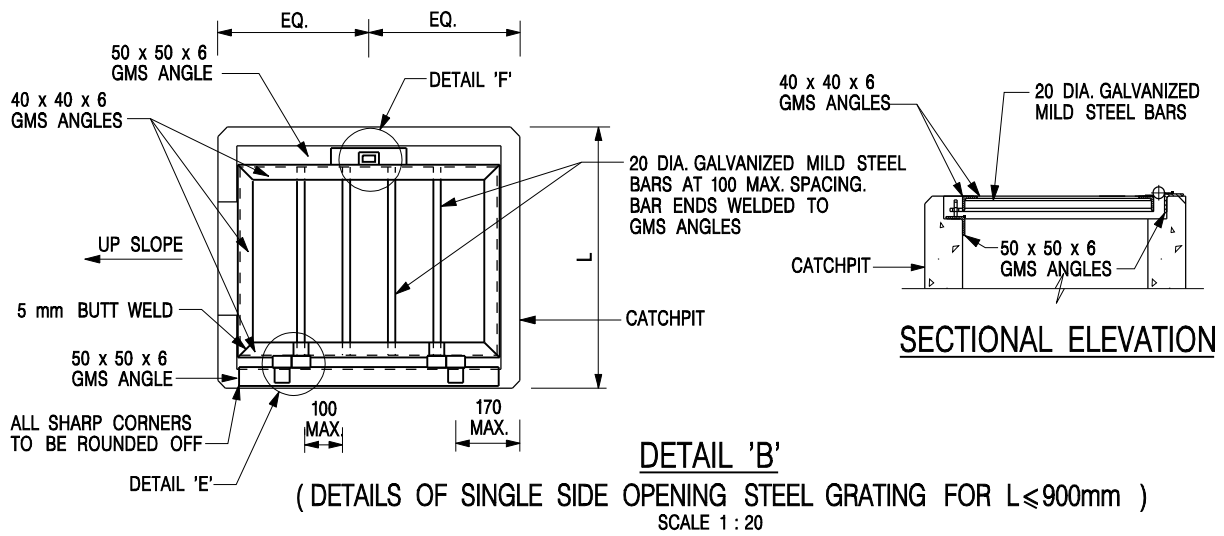
DETAIL 'D'
 (DETAILS OF HOLE FOR LOCK)
 SCALE 1 : 5

NOTES:

1. ALL DIMENSIONS ARE IN MILLIMETRES.
2. REFER TO SHEET 5 FOR OTHER NOTES.

STANDARD CATCHPIT DETAILS
 (SHEET 2 OF 5)


-	FORMER DRG. NO. C2405J.	Original Signed	03.2015
REF.	REVISION	SIGNATURE	DATE
		SCALE AS SHOWN	
		DRAWING NO. C2405 / 2	
DATE JAN 1991			

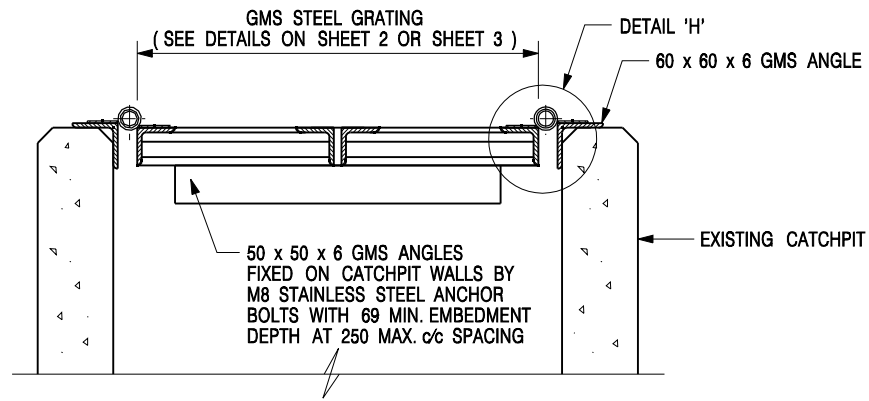


NOTES:

1. ALL DIMENSIONS ARE IN MILLIMETRES.
2. REFER TO SHEET 5 FOR OTHER NOTES.

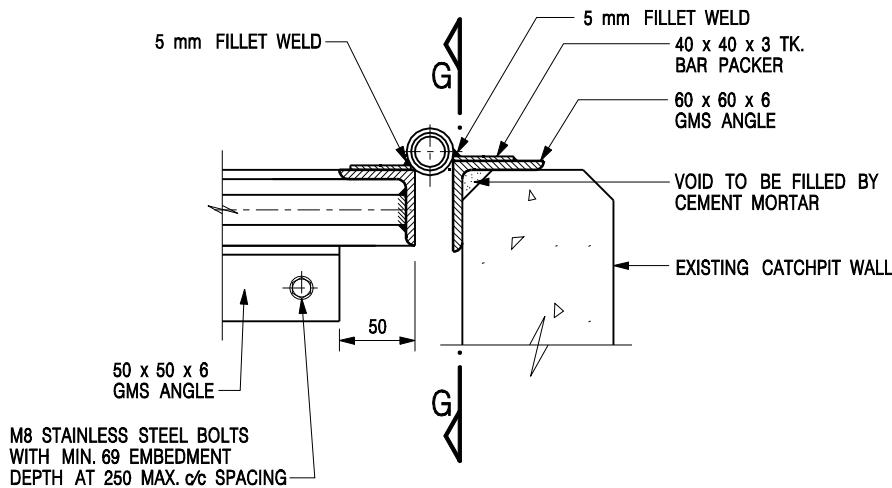
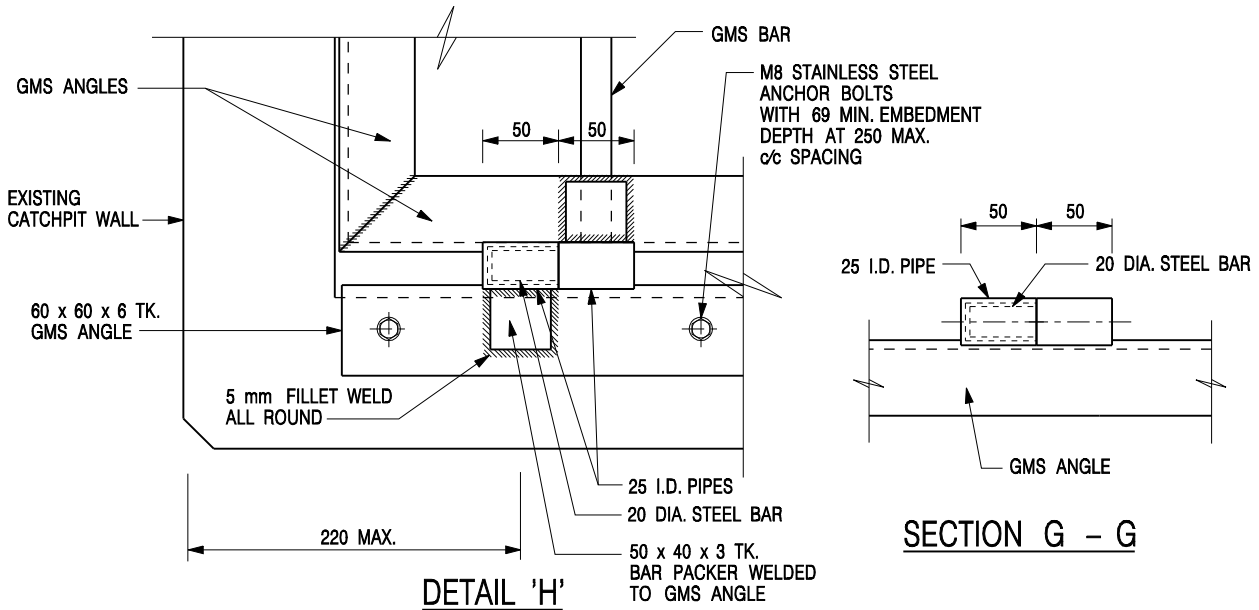
STANDARD CATCHPIT DETAILS
(SHEET 3 OF 5)

-	FORMER DRG. NO. C2405J.	Original Signed	03.2015
REF.	REVISION	SIGNATURE	DATE
 CIVIL ENGINEERING AND DEVELOPMENT DEPARTMENT		SCALE AS SHOWN	
		DRAWING NO. C2405 /3	
DATE JAN 1991			



**DETAIL 'G' - DETAILS OF STEEL GRATING
CONSTRUCTED ON EXISTING CATCHPIT**

SCALE 1 : 10




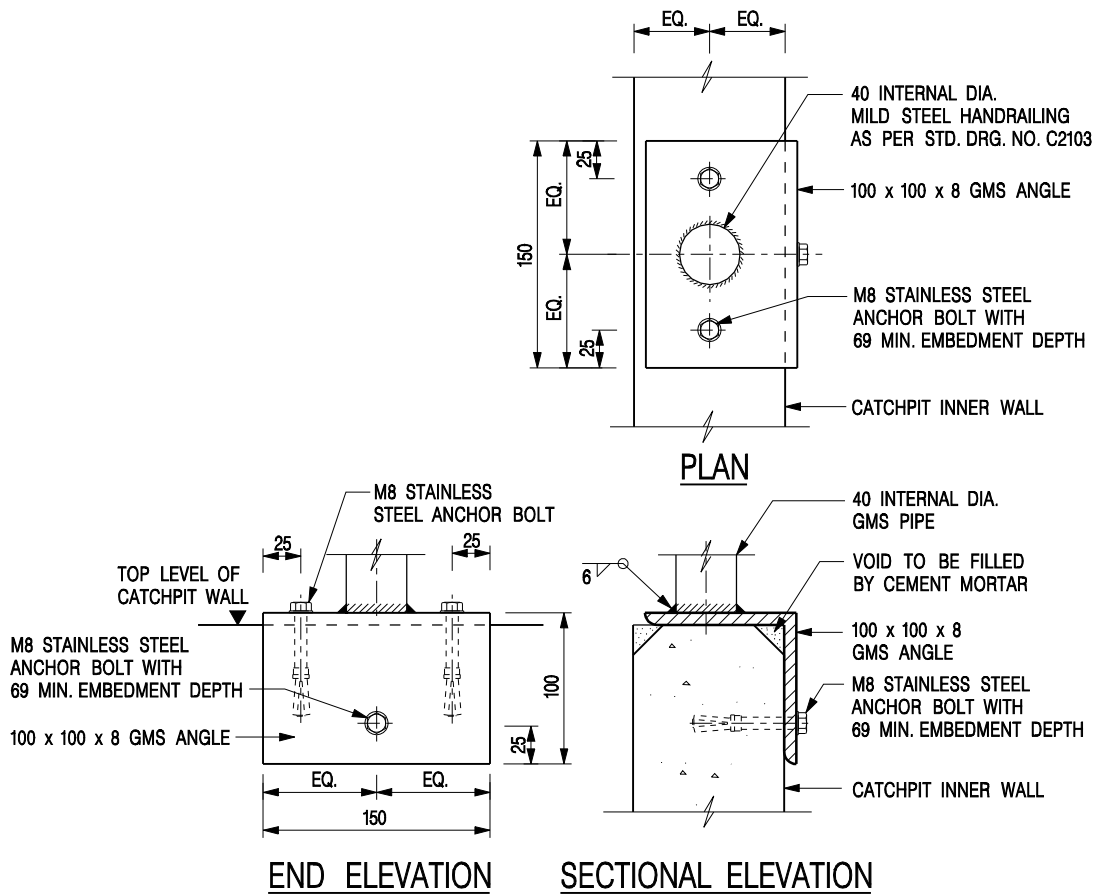
NOTES:

1. ALL DIMENSIONS ARE IN MILLIMETRES.
2. REFER TO SHEET 5 FOR OTHER NOTES.

STANDARD CATCHPIT DETAILS
(SHEET 4 OF 5)

-	FORMER DRG. NO. C2405J.	Original Signed	03.2015
REF.	REVISION	SIGNATURE	DATE

 CIVIL ENGINEERING AND DEVELOPMENT DEPARTMENT	
SCALE AS SHOWN	DRAWING NO. C2405 / 4
DATE JAN 1991	



**DETAIL 'J' – FIXING DETAILS FOR HANDRAILING
ON TOP OF CATCHPIT WALL**


SCALE 1 : 5

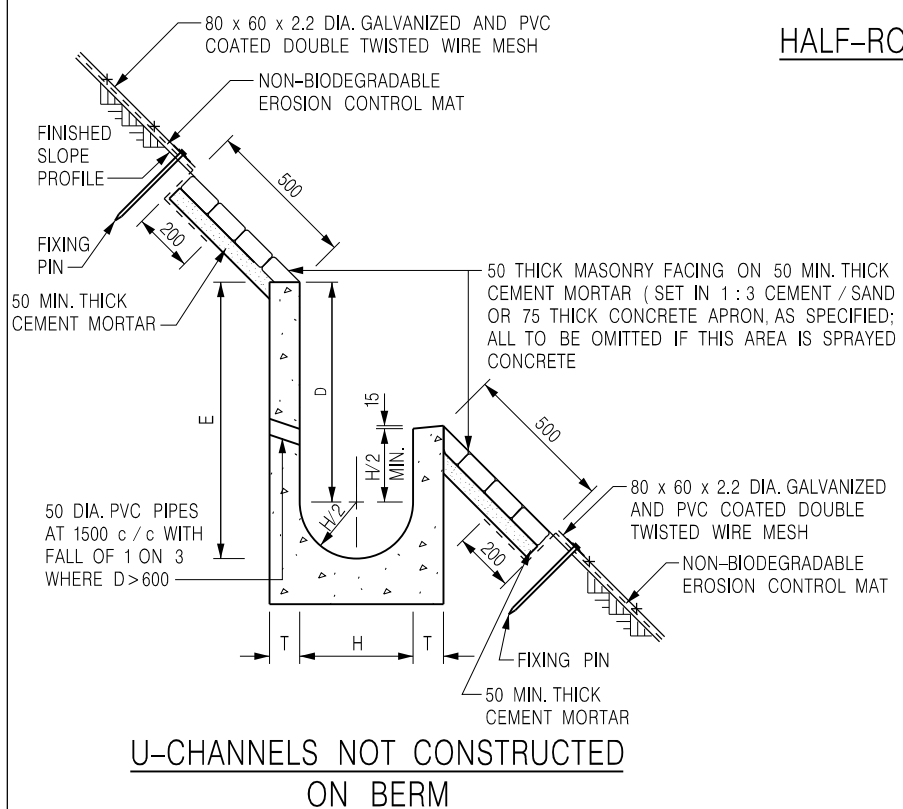
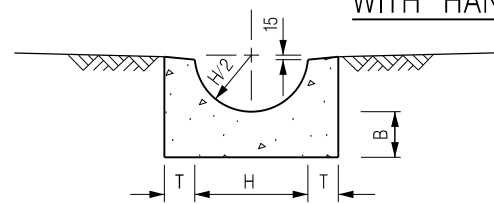
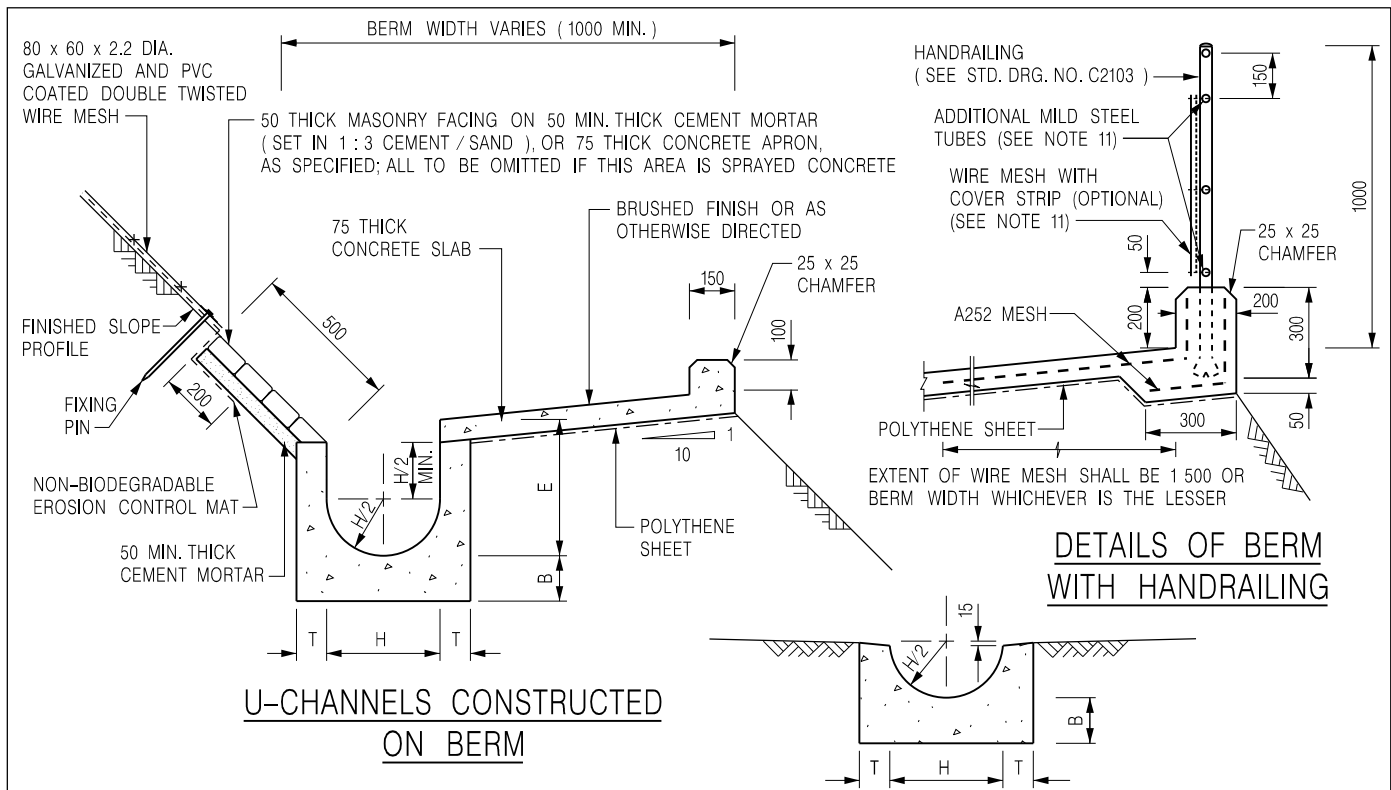
NOTES:

1. ALL DIMENSIONS ARE IN MILLIMETRES.
2. ALL CONCRETE SHALL BE GRADE 20 /20.
3. CONCRETE SURFACE FINISH SHALL BE CLASS U2 OR F2 AS APPROPRIATE.
4. FOR DETAILS OF JOINT, REFER TO STD. DRG. NO. C2413.
5. CONCRETE TO BE COLOURED AS SPECIFIED.
6. FOR CATCHPITS CONSTRUCTED ON OR ADJACENT TO A FOOTPATH, STEEL GRATINGS (SEE DETAILS ON SHEET 2 OR SHEET 3) OR CONCRETE COVERS (SEE STD. DRG. NO. C2407) SHALL BE PROVIDED AS DIRECTED BY THE ENGINEER.
7. IF INSTRUCTED BY THE ENGINEER, HANDRAILING (SEE DETAIL 'J' ON SHEET 5; EXCEPT ON THE UPSLOPE SIDE) IN LIEU OF STEEL GRATINGS OR CONCRETE COVERS CAN BE ACCEPTED AS AN ALTERNATIVE SAFETY MEASURE FOR CATCHPITS NOT ON A FOOTPATH NOR ADJACENT TO IT. TOP OF THE HANDRAILING SHALL BE 1 000 mm MIN. MEASURED FROM THE ADJACENT GROUND LEVEL.
8. MINIMUM INTERNAL CATCHPIT WIDTH SHALL BE 1 000 mm FOR CATCHPITS WITH A HEIGHT EXCEEDING 1 000 mm MEASURED FROM THE INVERT LEVEL TO THE ADJACENT GROUND LEVEL. AND, STEP IRONS (SEE DSD STD. DRG. NO. DS1043) AT 300 mm ϕ c STAGGERED SHALL BE PROVIDED. THICKNESS OF CATCHPIT WALL FOR INSTALLATION OF STEP IRONS SHALL BE INCREASED TO 150 mm.
9. FOR RETROFITTING AN EXISTING CATCHPIT WITH STEEL GRATING, SEE DETAIL 'G' ON SHEET 4.
10. ALL STEEL ANGLES SHALL COMPLY WITH BS EN 10025 AND BS EN 10056.
11. UNLESS OTHERWISE SPECIFIED, ALL WELDS SHALL BE 5 mm CONTINUOUS FILLET WELDS.
12. ALL WELDS SHALL BE CHIPPED, GROUND SMOOTH, BRUSHED TO REMOVE SLAG PRIOR TO HOT-DIP GALVANIZATION.
13. ALL STEELWORK SHALL BE HOT-DIP GALVANIZED TO BS EN ISO 1461. ALL EXPOSED STEELWORK SURFACES SHALL BE TREATED AND PAINTED IN ACCORDANCE WITH THE GENERAL SPECIFICATION.
14. SUBJECT TO THE APPROVAL OF THE ENGINEER, OTHER MATERIALS CAN ALSO BE USED AS COVERS / GRATINGS.

**STANDARD CATCHPIT DETAILS
(SHEET 5 OF 5)**

-	FORMER DRG. NO. C2405J.	Original Signed	03.2015
REF.	REVISION	SIGNATURE	DATE

 CIVIL ENGINEERING AND DEVELOPMENT DEPARTMENT	
SCALE AS SHOWN	DRAWING NO.
DATE JAN 1991	C2405 /5



- NOTES:**
1. ALL DIMENSIONS ARE IN MILLIMETRES.
 2. ALL CONCRETE TO BE GRADE 20 / 20.
 3. CONCRETE SURFACE FINISH SHALL BE CLASS U2, F2 OR BRUSHED FINISH AS DIRECTED.
 4. SPACING OF EXPANSION JOINT IN CHANNELS, BERM SLABS AND APRONS TO BE 10 METRES MAXIMUM, SEE STD. DRG. NO. C2413 FOR DETAILS.
 5. JOINTS FOR CHANNELS, BERM SLABS, APRONS AND WALLS, ETC. TO BE ON THE SAME ALIGNMENT.
 6. FOR DIMENSIONS T, H, & B, SEE TABLE BELOW.
 7. BIODEGRADABLE EROSION CONTROL MAT IF REQUIRED, SEE STD. DRG. NO. C2511/E.
 8. CONCRETE TO BE COLOURED AS SPECIFIED.
 9. CONCRETE U-CHANNEL CAN BE CAST IN-SITU OR PRECAST CONCRETE SUBJECT TO THE ENGINEER'S AGREEMENT ON THE DETAILS.
 10. DETAILS OF EROSION CONTROL MAT AND WESH MESH ON BERM. (SEE STD DRG. NO. C2511/E)
 11. THE WIRE MESH ON HANDRAILING IS OPTIONAL. THE COVER STRIP AND ADDITIONAL MILD STEEL TUBES ARE NEEDED ONLY IF WIRE MESH IS PROVIDED. (SEE STD. DRG. NO. C2103)

NOMINAL SIZE H	T	B	REINFORCEMENT
300	80	100	A252 MESH PLACED CENTRALLY AND T=100 WHEN E>650
375 - 600	100	150	
675 - 900	125	175	A252 MESH PLACED CENTRALLY

J	DETAILS OF HANDRAILING AMENDED.	Original Signed	08.2024
I	MINOR AMENDMENT.	Original Signed	07.2018
H	THICKNESS OF MASONRY FACING AMENDED.	Original Signed	01.2005
G	MINOR AMENDMENT.	Original Signed	01.2004
F	GENERAL REVISION.	Original Signed	12.2002
REF.	REVISION	SIGNATURE	DATE

DETAILS OF HALF-ROUND AND U-CHANNELS (TYPE A - WITH MASONRY APRON)

CEDD CIVIL ENGINEERING AND DEVELOPMENT DEPARTMENT

SCALE 1 : 25 **DRAWING NO.** C2409J

DATE JAN 1991