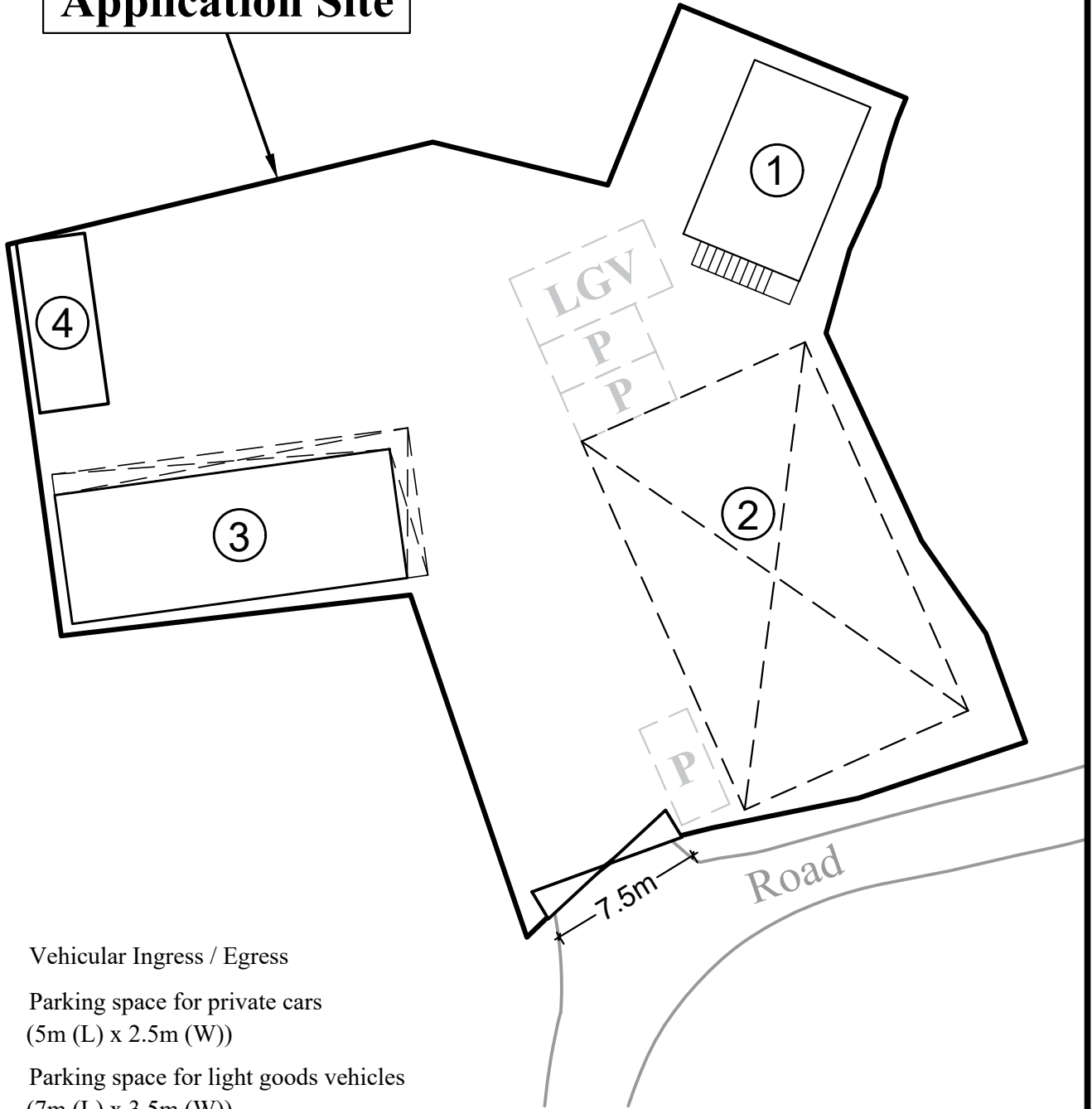







# Application Site



**Legend:**

-  Vehicular Ingress / Egress
-  Parking space for private cars  
(5m (L) x 2.5m (W))
-  Parking space for light goods vehicles  
(7m (L) x 3.5m (W))

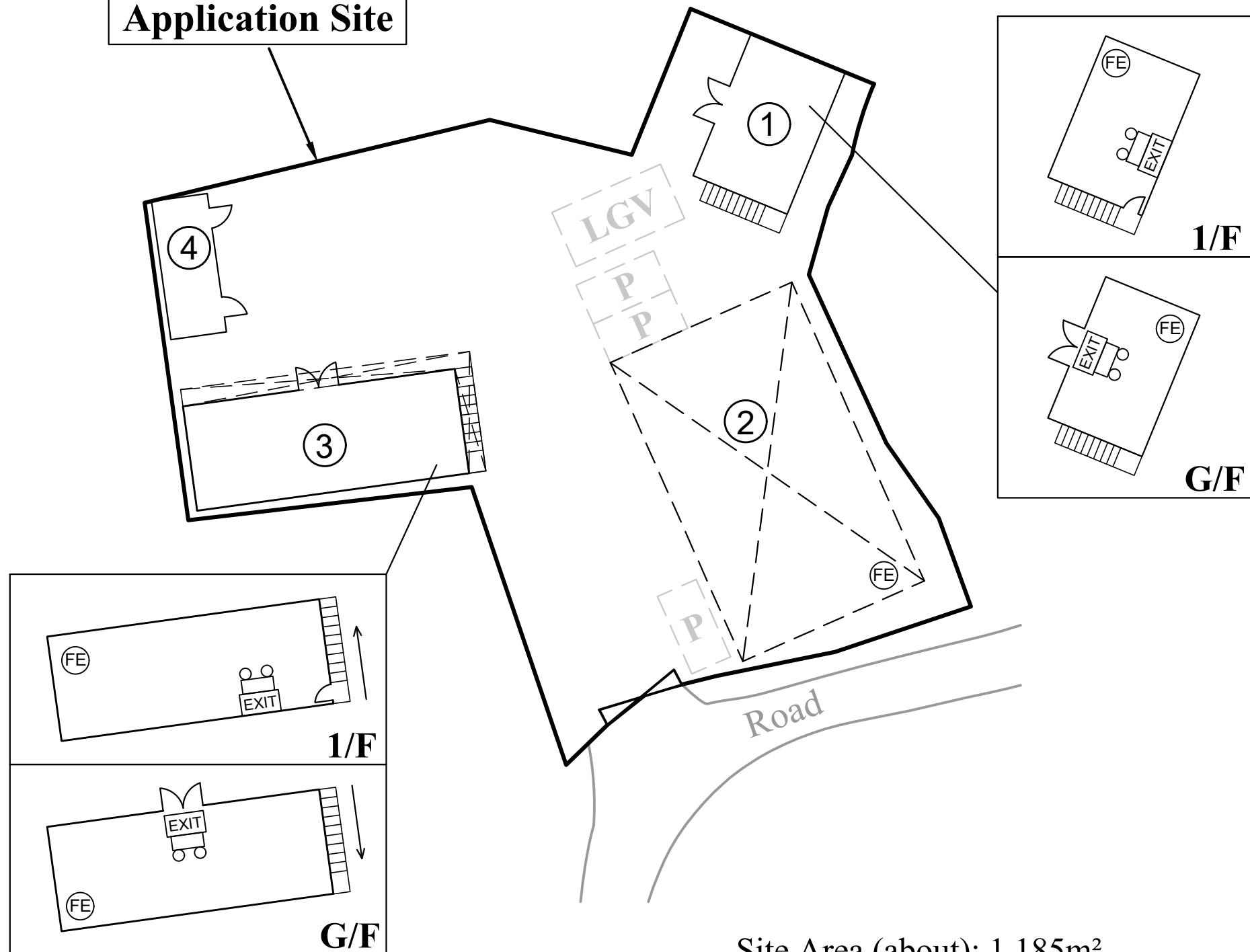
Site Area (about): 1,185m<sup>2</sup>

No.	Structure / Use	Covered Area	Floor Area	Height	Storeys
1	Office cum dog kennel	54m <sup>2</sup>	108m <sup>2</sup>	7m	2
2	Open Shed	226m <sup>2</sup>	226m <sup>2</sup>	7m	1
3	Multi-function Rooms	123m <sup>2</sup>	225m <sup>2</sup>	7m	2
4	Toilet	27m <sup>2</sup>	27m <sup>2</sup>	5m	1
Total:		<u>430m<sup>2</sup></u>	<u>586m<sup>2</sup></u>		

<b>1 : 300</b>	<b>Layout Plan</b>	<b>Goldrich Planners &amp; Surveyors Ltd.</b>
<b>January 2024</b>	<b>Lots 1486(Part), 1489(Part)</b> <b>and adjoining Government Land in D. D. 107</b> <b>Yuen Long, New Territories</b>	<b>Plan 3</b> <b>( P 20039 )</b>



### Application Site

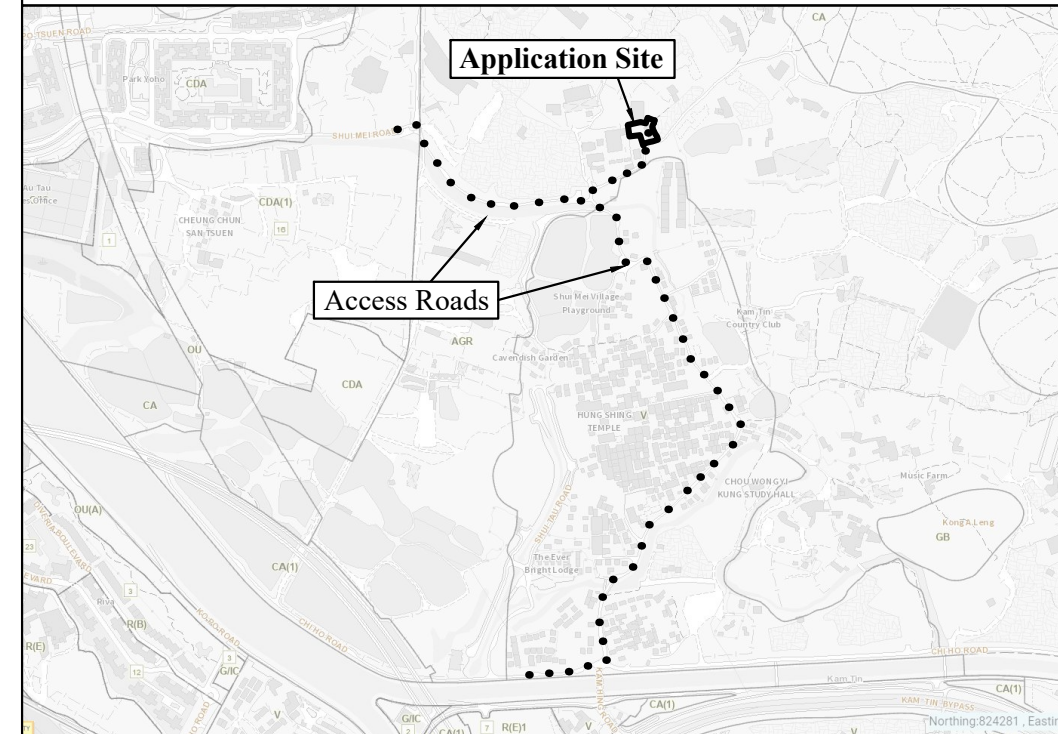


Site Area (about): 1,185m<sup>2</sup>

No.	Structure / Use	Covered Area	Floor Area	Height	Storeys
1	Office cum dog kennel	54m <sup>2</sup>	108m <sup>2</sup>	7m	2
2	Open Shed	226m <sup>2</sup>	226m <sup>2</sup>	7m	1
3	Multi-function Rooms	123m <sup>2</sup>	225m <sup>2</sup>	7m	2
4	Toilet	27m <sup>2</sup>	27m <sup>2</sup>	5m	1
Total:		430m <sup>2</sup>	586m <sup>2</sup>		

#### FS NOTES:

- (i) Sufficient emergency lighting shall be provided in accordance with BS 5266-1:2016, BS EN 1838:2013 and the FSD Circular Letter No. 4/2021
- (ii) Sufficient directional and exit sign shall be provided in accordance with BS 5266: Part 1 and FSD Circular Letter 5/2008.
- (iii) Portable hand-operated approved appliances shall be provided as required by occupancy.
- (iv) Fire alarm system shall be provided throughout the entire building in accordance with BS 5839-1:2017 and FSD Circular Letter 6/2021. One actuating point and one audio warning device to be located at each hose reel point. This actuation point should include facilities for fire pump start and audio/visual warning device initiation.



Location Plan (N.T.S)

#### Legend

- 5.0kg CO2 Gas type Fire Extinguisher x5
- Emergency Light x4
- Exit sign x4
- Vehicular Ingress / Egress
- Parking space for private cars (5m (L) x 2.5m (W))
- Parking space for light goods vehicles (7m (L) x 3.5m (W))

1:400 (A3)

March 2024

## Fire Service Installations Proposal

Lots 1486(Part), 1489(Part)  
and adjoining Government Land in D. D. 107  
Yuen Long, New Territories

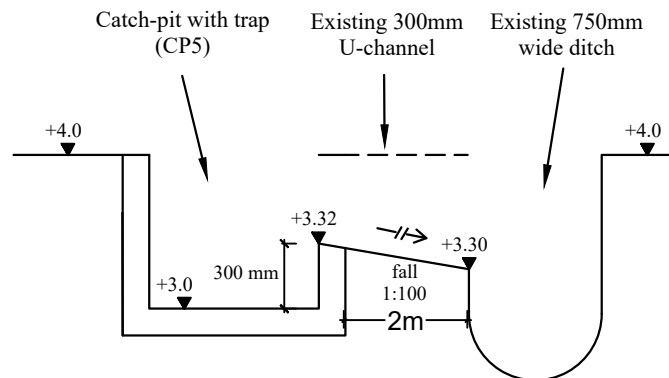
Goldrich Planners & Surveyors Ltd.

Plan 6  
( P 20039 )

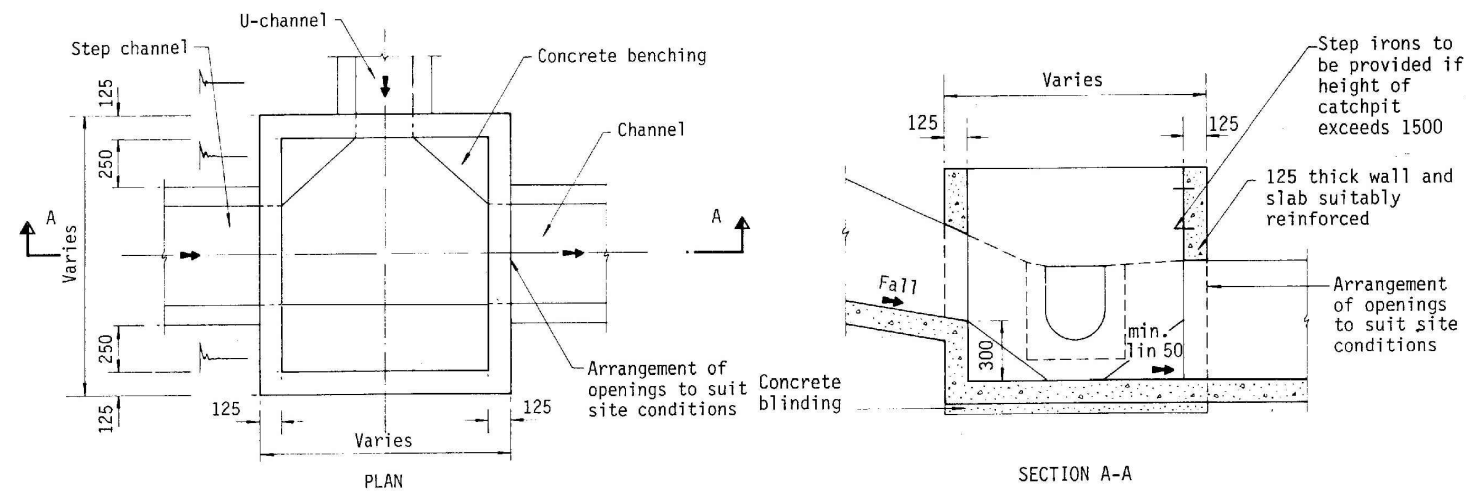




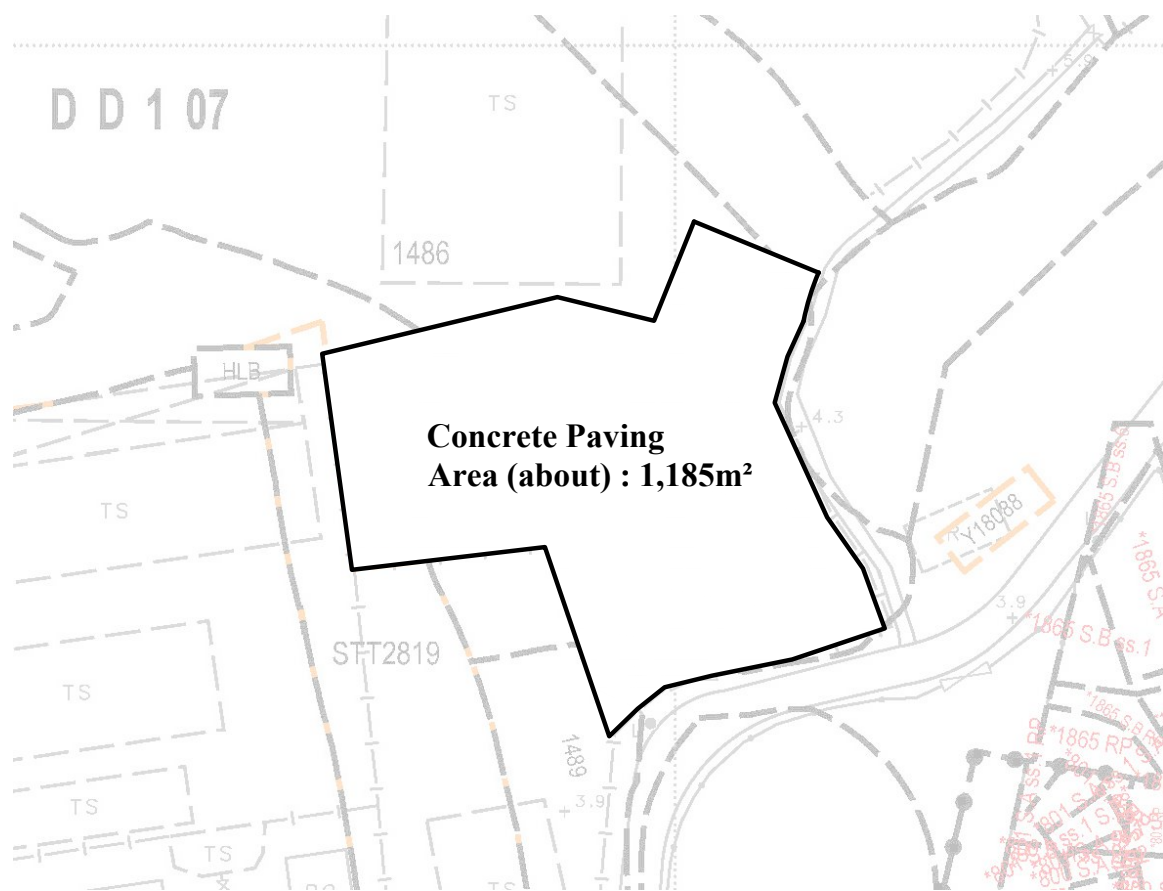
**Connection details of Existing outfall between CP5 and existing 750mm wide ditch**



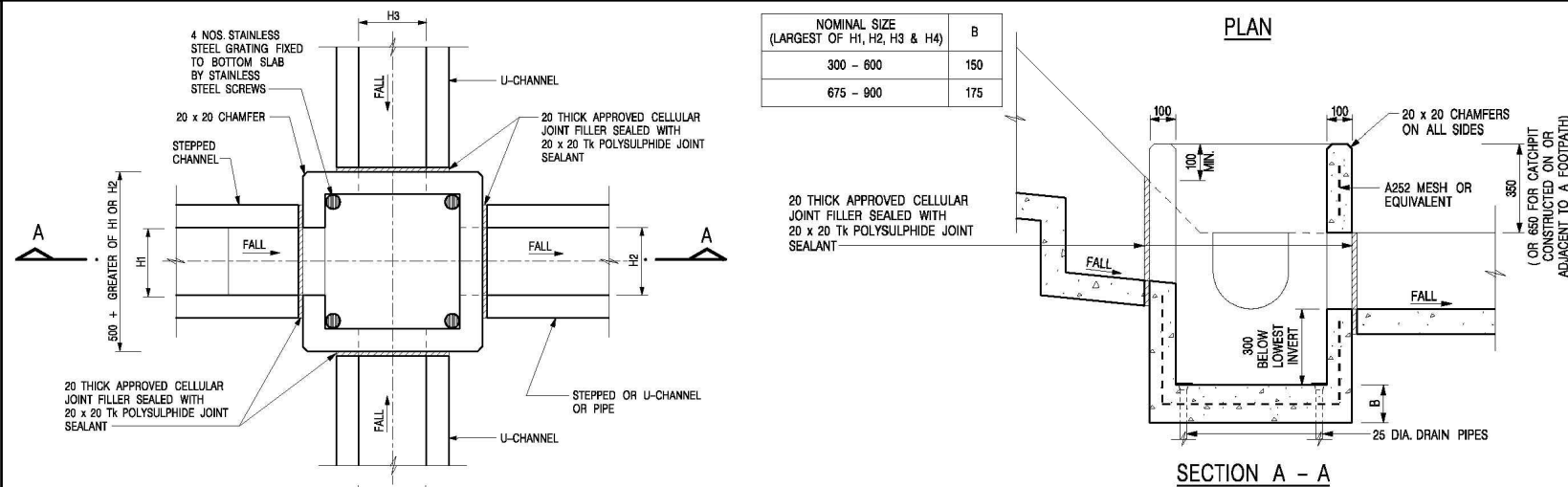
(N. T. S.)



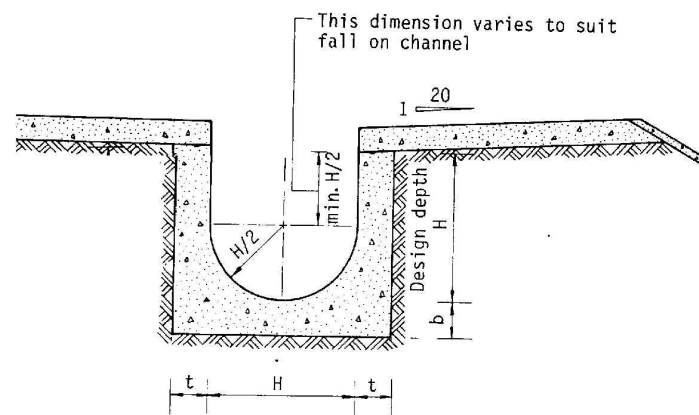
**TYPICAL DETAILS OF CATCHPIT**



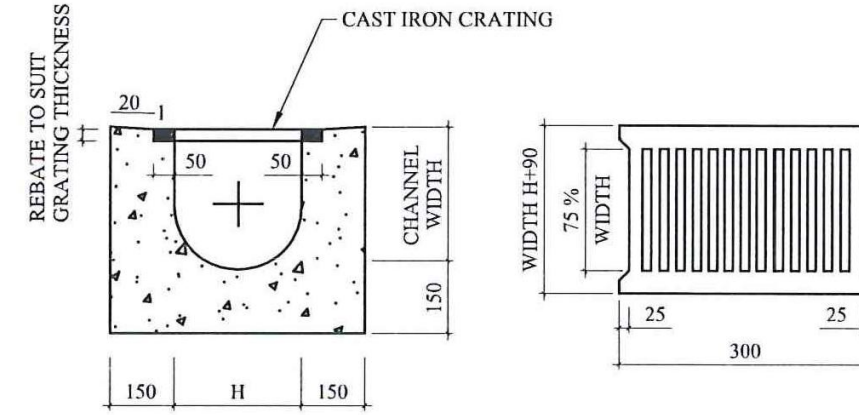
**AREA OF CATCHMENT  
(N.T.S)**



**DETAILS OF CATCHPIT WITH TRAP  
(REFER TO CEDD'S STANDARD DWG. C2406/1)**



**TYPICAL DETAILS OF U CHANNEL**



**TYPICAL SECTION OF U-CHANNEL WITH COVER  
(N.T.S.)**

**CAST IRON CRATING  
(HEAVY DUTY)**

N.T.S

April 2024

**Drainage Proposal**

Lots 1486(Part), 1489(Part)  
and adjoining Government Land in D. D. 107  
Yuen Long, New Territories

**Goldrich Planners & Surveyors Ltd.**

**Plan 7.2  
( P 23044 )**