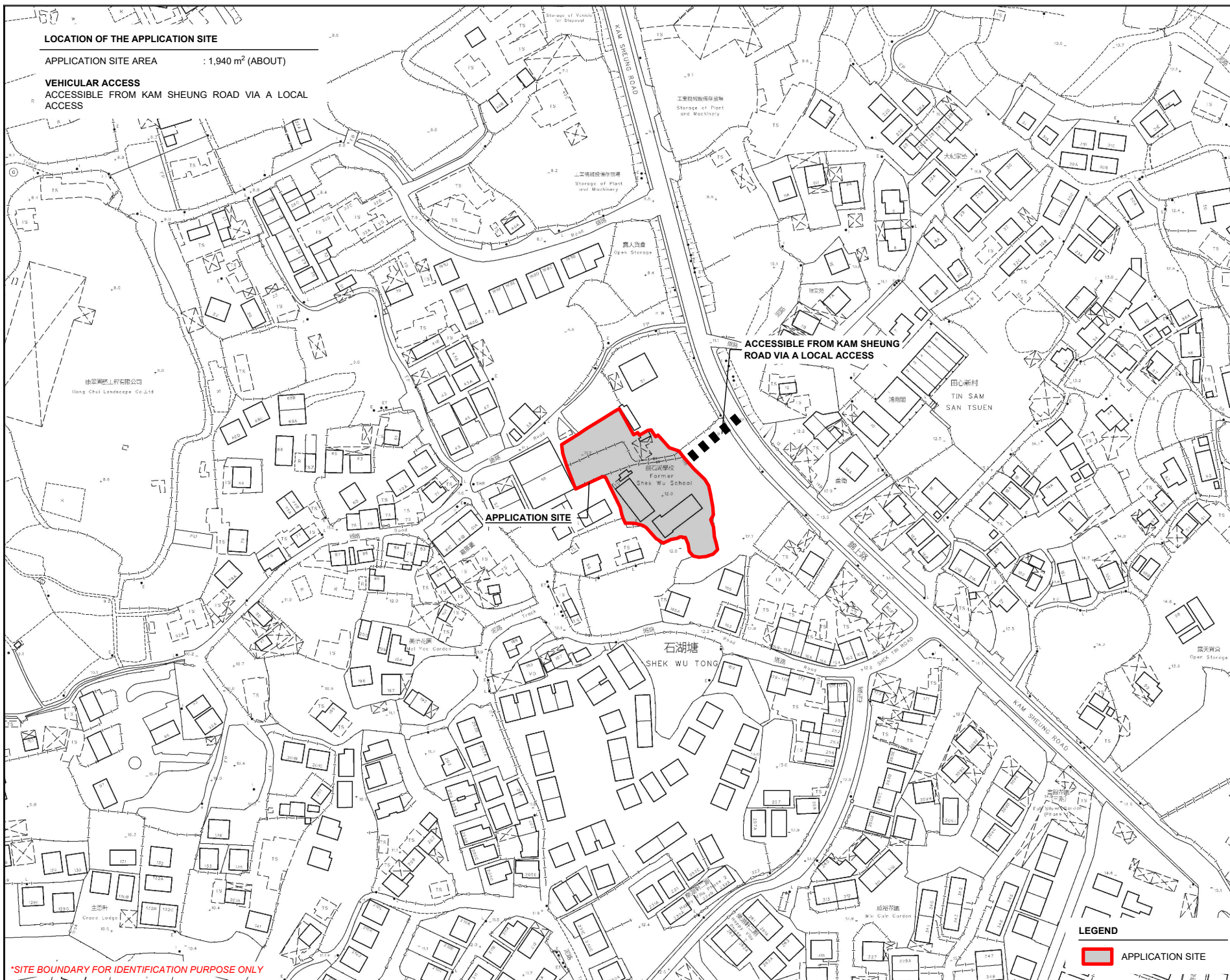
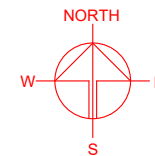


LOCATION OF THE APPLICATION SITE

APPLICATION SITE AREA : 1,940 m² (ABOUT)

VEHICULAR ACCESS

ACCESSIBLE FROM KAM SHEUNG ROAD VIA A LOCAL ACCESS



*SITE BOUNDARY FOR IDENTIFICATION PURPOSE ONLY

PLANNING CONSULTANT



PROJECT

PROPOSED TEMPORARY PLACE OF RECREATION, SPORTS OR CULTURE WITH ANCILLARY FACILITIES FOR A PERIOD OF 5 YEARS

SITE LOCATION

LOTS 2063 AND 2064 IN D.D. 106 AND ADJOINING GOVERNMENT LAND, KAM TIN, YUEN LONG, NEW TERRITORIES

(FORMER SHEK WU SCHOOL)

SCALE
1 : 2000 @ A4

DRAWN BY
MN 20.6.2024

REVISED BY
DATE

APPROVED BY
DATE

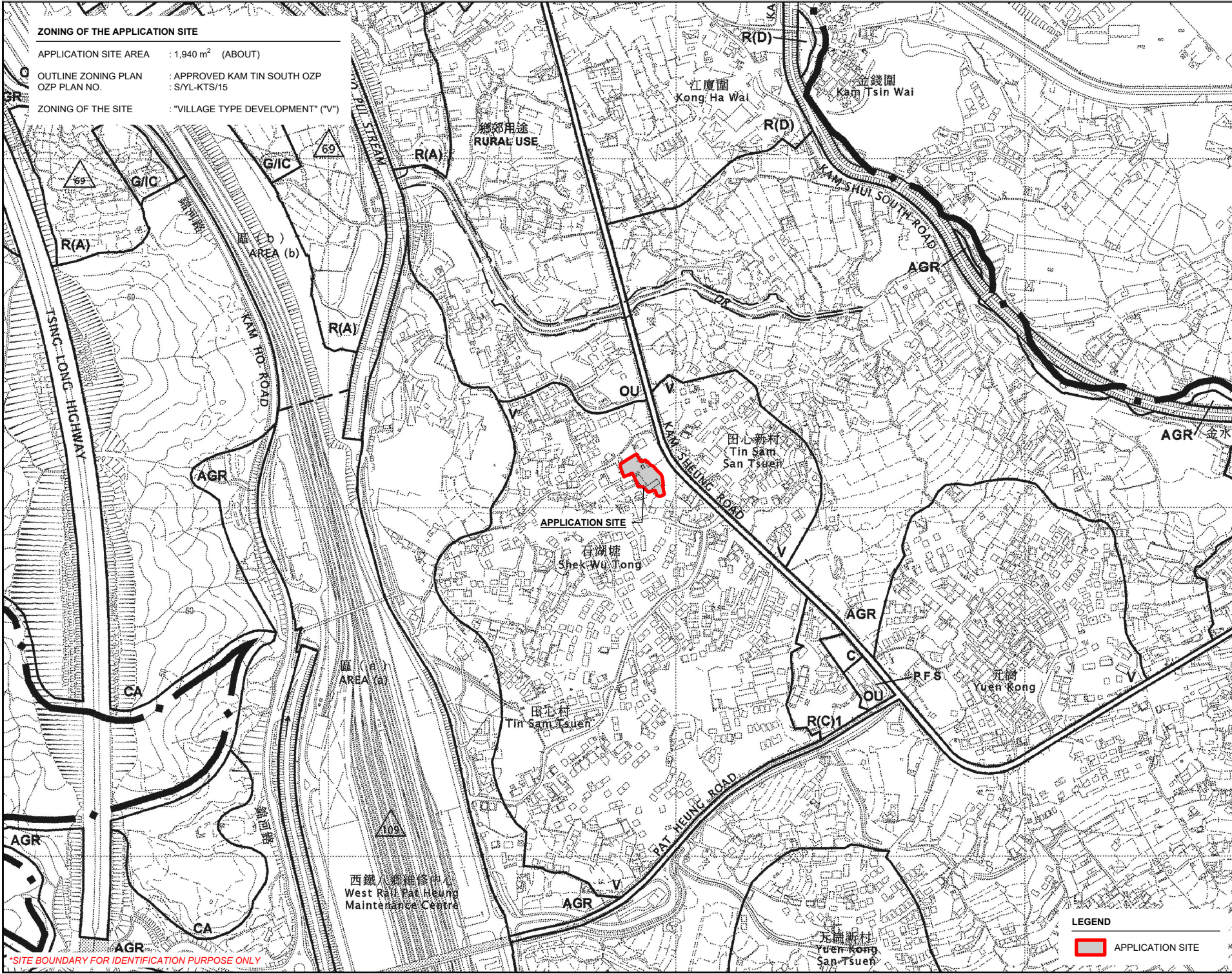
DWG. TITLE
LOCATION PLAN

DWG NO.
PLAN 1

VER.
001

LEGEND

APPLICATION SITE



ZONING OF THE APPLICATION SITE

APPLICATION SITE AREA : 1,940 m² (ABOUT)

OUTLINE ZONING PLAN : APPROVED KAM TIN SOUTH OZP
OZP PLAN NO. : S/YL-KTS/15

ZONING OF THE SITE : "VILLAGE TYPE DEVELOPMENT" ("V")

NORTH

PLANNING CONSULTANT

R-Riches
Property Consultants Ltd.

PROJECT

PROPOSED TEMPORARY PLACE OF RECREATION, SPORTS OR CULTURE WITH ANCILLARY FACILITIES FOR A PERIOD OF 5 YEARS

SITE LOCATION

LOTS 2063 AND 2064 IN D.D. 106 AND ADJOINING GOVERNMENT LAND, KAM TIN, YUEN LONG, NEW TERRITORIES

(FORMER SHEK WU SCHOOL)

SCALE

1 : 7000 @ A4

DRAWN BY	DATE
MN	20.6.2024
REVISED BY	DATE
APPROVED BY	DATE

DWG. TITLE

ZONING OF THE SITE

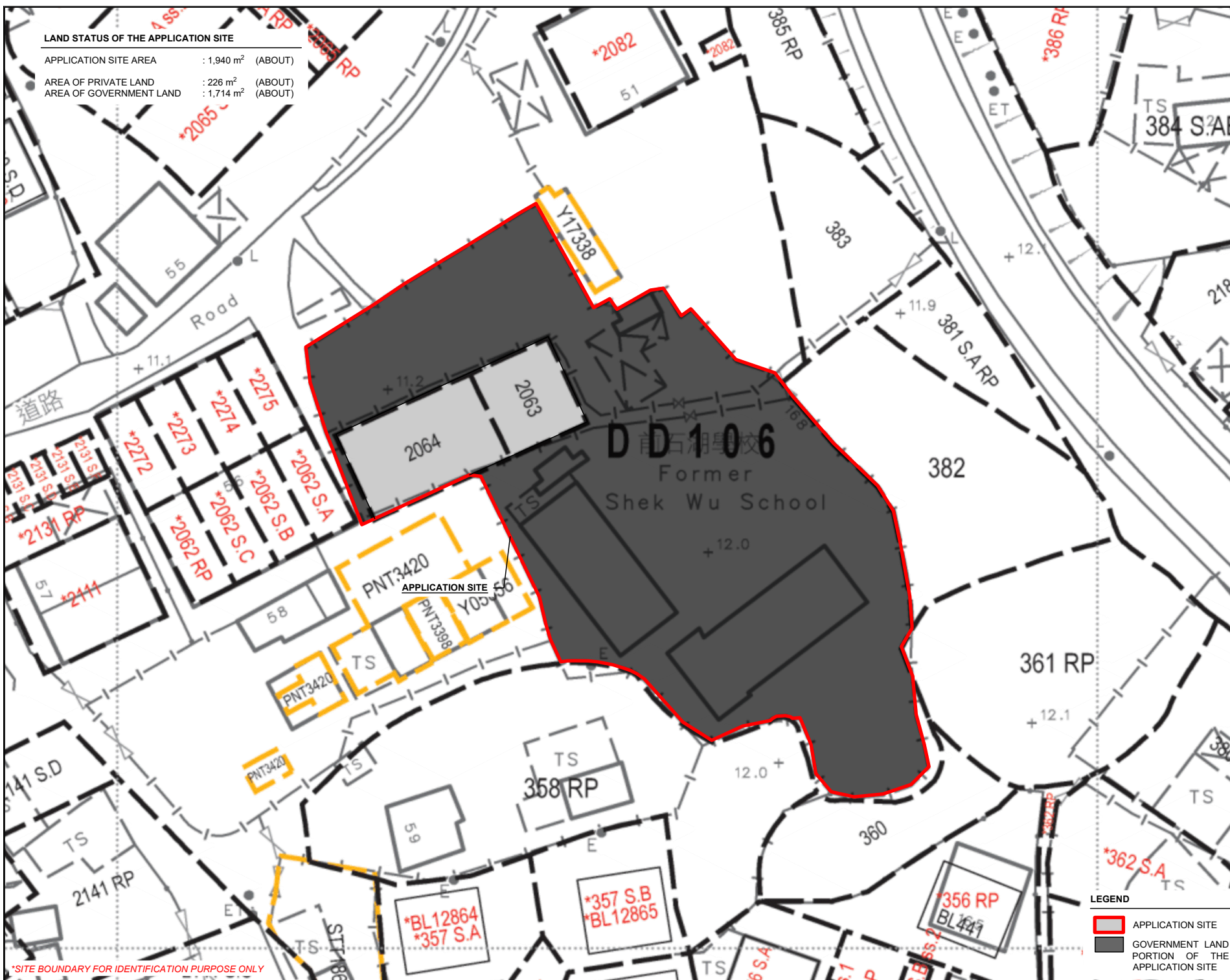
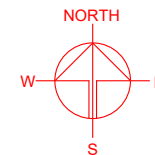
DWG NO.	VER.
PLAN 2	001

LEGEND

APPLICATION SITE

*SITE BOUNDARY FOR IDENTIFICATION PURPOSE ONLY

APPLICATION SITE AREA	: 1,940 m ²	(ABOUT)
AREA OF PRIVATE LAND	: 226 m ²	(ABOUT)
AREA OF GOVERNMENT LAND	: 1,714 m ²	(ABOUT)



***SITE BOUNDARY FOR IDENTIFICATION PURPOSE ONLY**

PLANNING CONSULTANT



PROJECT	
---------	--

PROPOSED TEMPORARY PLACE
OF RECREATION, SPORTS OR
CULTURE WITH ANCILLARY
FACILITIES FOR A PERIOD OF 5
YEARS

SITE LOCATION

LOTS 2063 AND 2064 IN D.D. 106
AND ADJOINING GOVERNMENT
LAND, KAM TIN, YUEN LONG,
NEW TERRITORIES

(FORMER SHEK WU SCHOOL)

SCALE
1 : 500 @ A4

DRAWN BY	DATE
MN	11.6.2024

REVISED BY	DATE
------------	------

APPROVED BY	DATE
-------------	------

DWG. TITLE
LAND STATUS OF THE SITE

DWG NO.	VER
PLAN 3	00

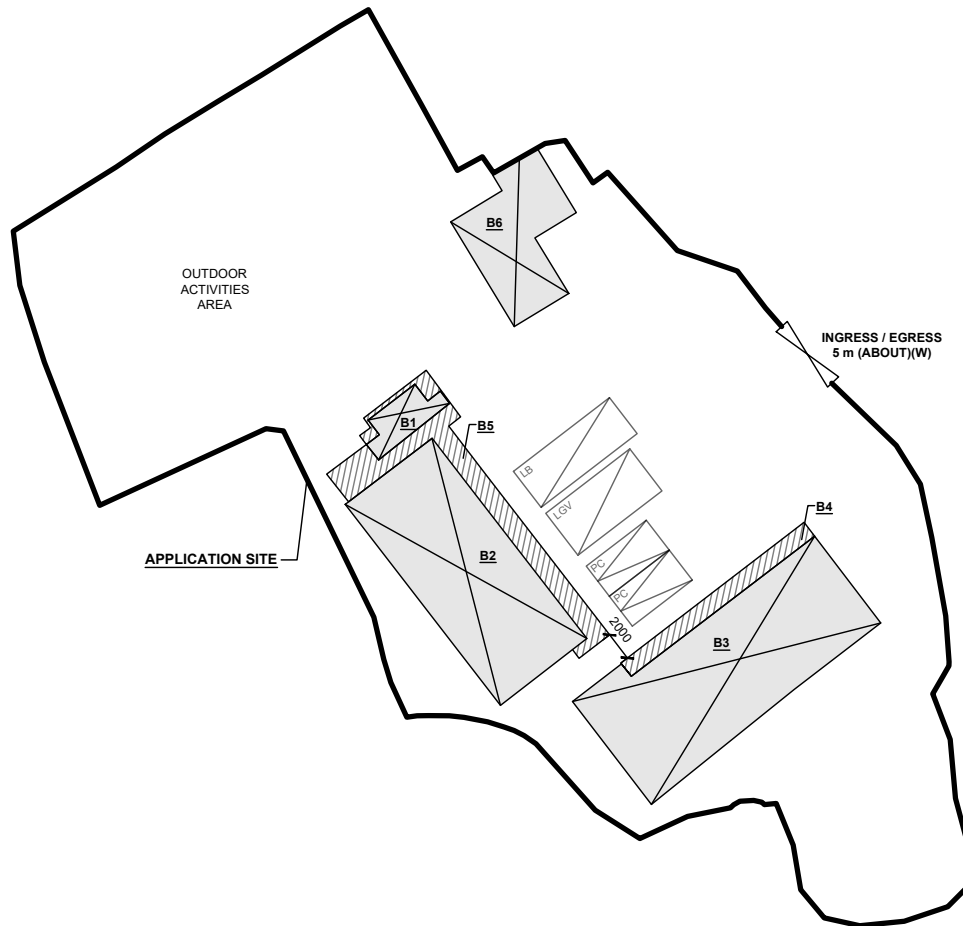
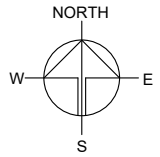
LEGEND

 APPLICATION SITE
 GOVERNMENT LAND
PORTION OF THE
APPLICATION SITE

DEVELOPMENT PARAMETERS

APPLICATION SITE AREA	: 1,940 m ²	(ABOUT)
COVERED AREA	: 389 m ²	(ABOUT)
UNCOVERED AREA	: 1,551 m ²	(ABOUT)
PLOT RATIO	: 0.2	(ABOUT)
SITE COVERAGE	: 20 %	(ABOUT)
NO. OF STRUCTURE	: 6	
DOMESTIC GFA	: NOT APPLICABLE	
NON-DOMESTIC GFA	: 389 m ²	(ABOUT)
TOTAL GFA	: 389 m ²	(ABOUT)
BUILDING HEIGHT	: 3 m - 6 m	(ABOUT)
NO. OF STOREY	: 1	

STRUCTURE	USE	COVERED AREA	GROSS FLOOR AREA	BUILDING HEIGHT
B1	WASHROOM AND STORE ROOM	12m ² (ABOUT)	12 m ² (ABOUT)	3 m (ABOUT)(1-STOREY)
B2	YOUTH ACTIVITY CENTRE	121 m ² (ABOUT)	121 m ² (ABOUT)	6 m (ABOUT)(1-STOREY)
B3	ELDERLY ACTIVITY CENTRE, OFFICE	146 m ² (ABOUT)	146 m ² (ABOUT)	6 m (ABOUT)(1-STOREY)
B4	COVERED CORRIDOR	17 m ² (ABOUT)	17 m ² (ABOUT)	3 m (ABOUT)(1-STOREY)
B5	COVERED CORRIDOR	43 m ² (ABOUT)	43 m ² (ABOUT)	3 m (ABOUT)(1-STOREY)
B6	WASHROOM AND REFRESHMENT KIOSK	50 m ² (ABOUT)	50 m ² (ABOUT)	3 m (ABOUT)(1-STOREY)
TOTAL		389 m ² (ABOUT)	389 m ² (ABOUT)	



PARKING AND LOADING / UNLOADING PROVISIONS

NO. OF PRIVATE CAR PARKING SPACE	: 2
DIMENSION OF PARKING SPACE	: 5 m (L) x 2.5 m (W)
NO. OF L/UL SPACE FOR LIGHT GOODS VEHICLE	: 1
DIMENSION OF L/UL SPACE	: 7 m (L) x 3.5 m (W)
NO. OF L/UL SPACE FOR LIGHT BUS	: 1
DIMENSION OF L/UL SPACE	: 8 m (L) x 3 m (W)

LEGEND

	APPLICATION SITE
	STRUCTURE (ENCLOSED)
	STRUCTURE (NOT ENCLOSED)
	PARKING SPACE (PC)
	LOADING / UNLOADING SPACE (LGV)
	LOADING / UNLOADING SPACE (LB)
	INGRESS / EGRESS

PLANNING CONSULTANT



PROJECT

PROPOSED TEMPORARY PLACE OF RECREATION, SPORTS OR CULTURE WITH ANCILLARY FACILITIES FOR A PERIOD OF 5 YEARS

SITE LOCATION

LOTS 2063 AND 2064 IN D.D. 106 AND ADJOINING GOVERNMENT LAND, KAM TIN, YUEN LONG, NEW TERRITORIES

(FORMER SHEK WU SCHOOL)

SCALE

1 : 500 @ A4

DRAWN BY MN DATE 7.10.2024

REVISED BY DATE

APPROVED BY DATE

DWG. TITLE

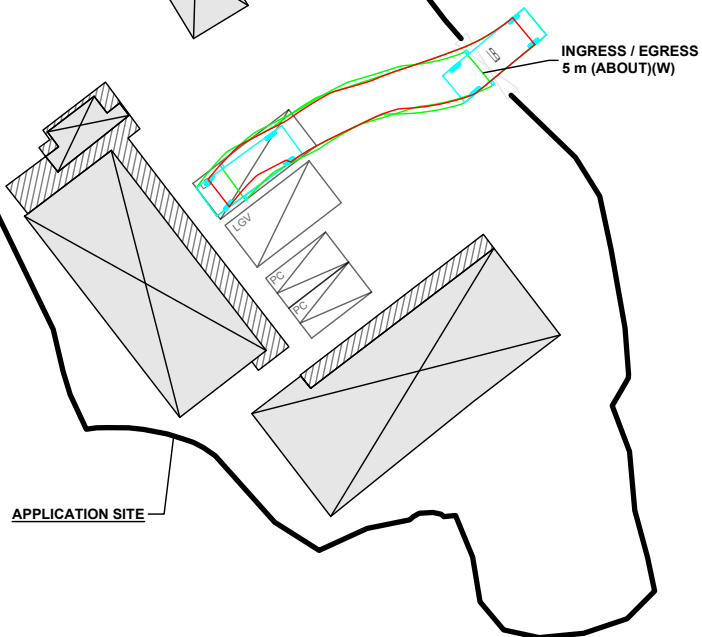
LAYOUT PLAN

DWG NO. PLAN 4 VER. 002

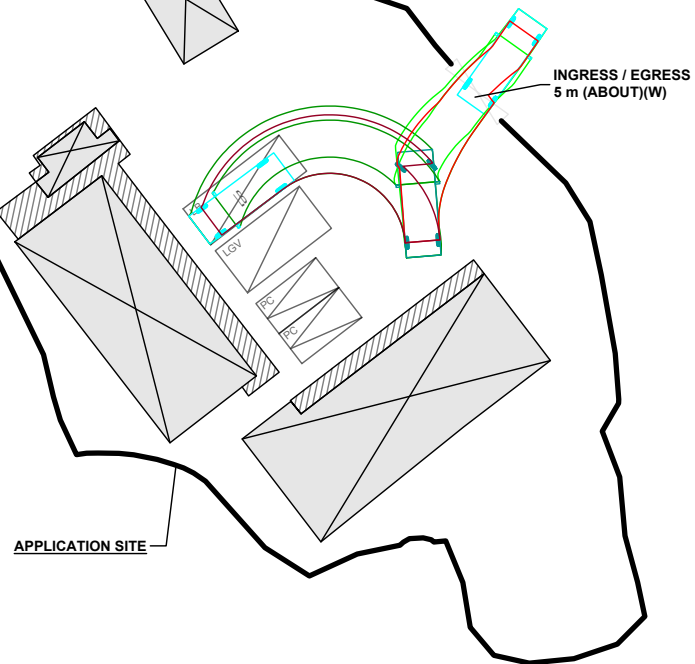
SWEPT PATH ANALYSIS

TYPE OF VEHICLE : LIGHT BUS
 DIMENSION OF VEHICLE : 2.3 m (W) X 7 m (L)

SWEPT PATHS GENERATED BY AUTODESK VEHICLE TRACKING



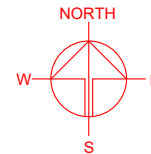
FROM THE LOCAL ACCESS TO
 THE APPLICATION SITE



FROM THE APPLICATION SITE
 TO THE LOCAL ACCESS

LEGEND

- APPLICATION SITE
- STRUCTURE (ENCLOSED)
- STRUCTURE (NOT ENCLOSED)
- PARKING SPACE (PC)
- LOADING / UNLOADING SPACE (LGV)
- LOADING / UNLOADING SPACE (LB)
- INGRESS / EGRESS
- LIGHT BUS
- SWEPT PATH OF LIGHT BUS



PLANNING CONSULTANT



PROJECT

PROPOSED TEMPORARY PLACE
 OF RECREATION, SPORTS OR
 CULTURE WITH ANCILLARY
 FACILITIES FOR A PERIOD OF 5
 YEARS

SITE LOCATION

LOTS 2063 AND 2064 IN D.D. 106
 AND ADJOINING GOVERNMENT
 LAND, KAM TIN, YUEN LONG,
 NEW TERRITORIES

(FORMER SHEK WU SCHOOL)

SCALE

1 : 500 @ A4

DRAWN BY

MN

DATE

7.10.2024

CHECKED BY

DATE

APPROVED BY

DATE

DWG. TITLE

SWEPT PATH ANALYSIS

DWG NO.

PLAN 5

VER.

002

*SITE BOUNDARY FOR IDENTIFICATION PURPOSE ONLY