

**Appendix V**  
Tree Survey

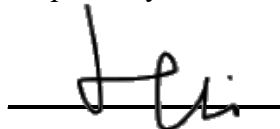
# Tree Survey Report

**Date of Survey: 25<sup>th</sup> October 2024**

**Location:**

**Lots 2063 And 2064 In D.D. 106 and Adjoining Government Land, Kam Tin, Yuen Long, New Territories (Former Shek Wu School)**

Prepared by:



Mak Ka Hei

Registered Arborist

Date: 28<sup>th</sup> October 2024

## **Table of contents**

1. Introduction	3
2. Summary of Existing Trees	4

### Appendix:

- I. Tree Survey Plan
- II. Tree Survey Schedule
- III. Photo Records

### Disclaimer:

The tree survey conducted indicates the condition of the surveyed trees at the time of inspection only. The assessments of amenity value, form, health and structural condition of the trees surveyed are based on visual inspection from the ground only. No aerial inspection, root digging or mapping, or diagnostic testing has been conducted as part of this survey. Wing Ho Yuen Landscaping Company Limited cannot accept responsibility for future failure or defects detected after the time of inspection of the trees surveyed in this report.

## **1. Introduction**

The survey conducted is to record all the existing trees in the tree survey boundary. The survey include tree species identification, tree tagging with durable labels, the measurements of overall tree height, Diameter at Breast Height (DBH), average crown spread, the evaluation on amenity value, form, health and structural conditions.

The tree survey was conducted on 25<sup>th</sup> October 2024. Plants with DBH less than 95mm were not recorded in the survey.



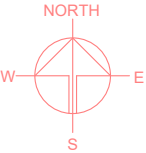
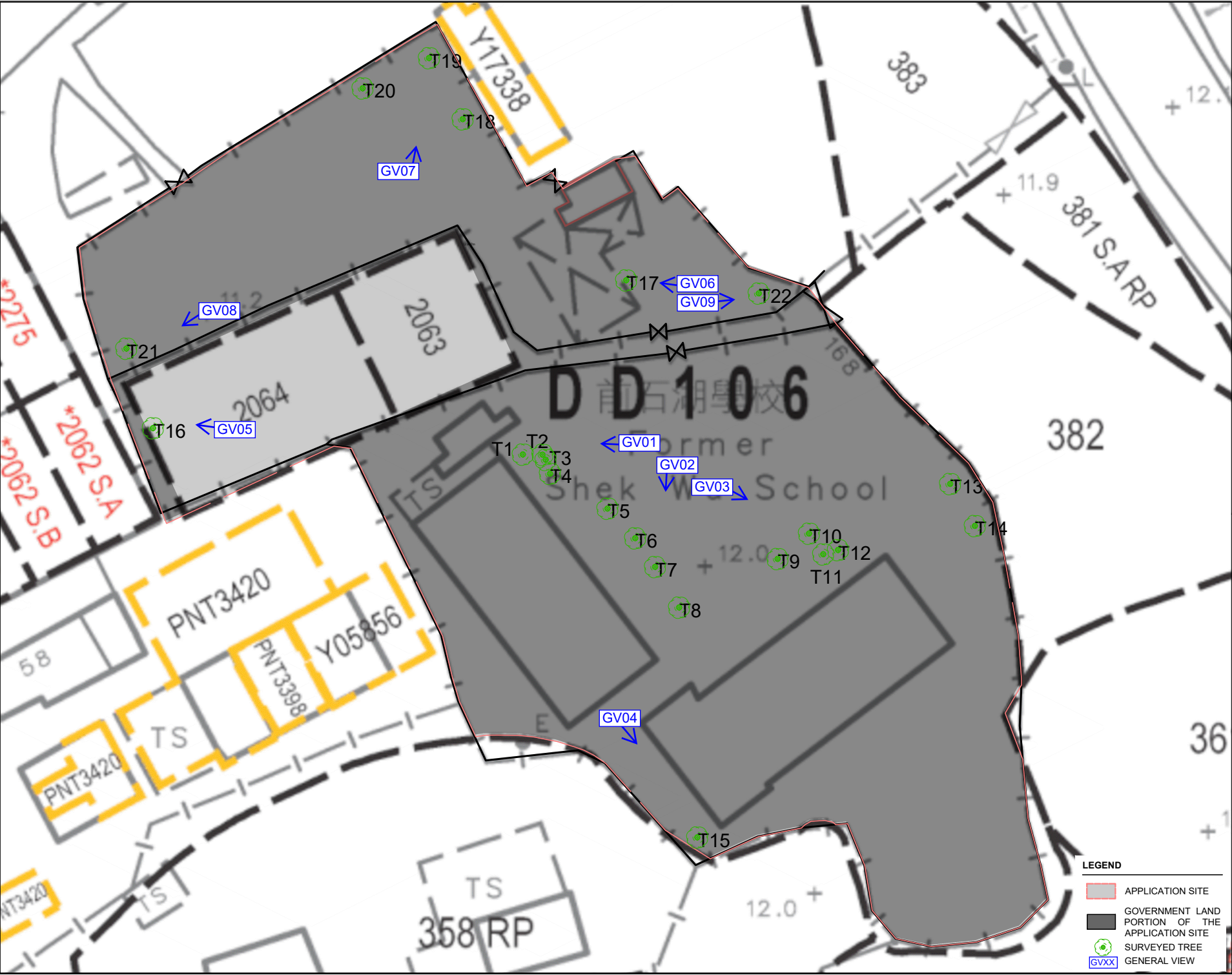
## **2. Summary of Existing Trees**

The surveyed site is located at Lots 2063 And 2064 In D.D. 106 and Adjoining Government Land, Kam Tin, Yuen Long, New Territories (Former Shek Wu School).

At the time of inspection on 25<sup>th</sup> October 2024, **22 nos.** trees were found within the Site. **No** dead tree was recorded in the surveyed area. Location of individual tree refers to Appendix I.

Details of tree conditions and photo records for individual tree are recorded in the Appendix II and Appendix III respectively.

## Appendix I – Tree Survey Plan



PLANNING CONSULTANT  
**R-Riches**  
Property Consultants Ltd.

PROJECT  
PROPOSED TEMPORARY PLACE  
OF RECREATION, SPORTS OR  
CULTURE WITH ANCILLARY  
FACILITIES FOR A PERIOD OF 5  
YEARS

SITE LOCATION  
LOTS 2063 AND 2064 IN D.D. 106  
AND ADJOINING GOVERNMENT  
LAND, KAM TIN, YUEN LONG,  
NEW TERRITORIES  
(FORMER SHEK WU SCHOOL)

SCALE  
1 : 500 @ A4

DRAWN BY KYU	DATE 28.10.2024
REVISED BY	DATE
APPROVED BY	DATE

DWG. TITLE  
TREE SURVEY PLAN

DWG NO. TSP	VER. 000
----------------	-------------


**LEGEND**  
APPLICATION SITE  
GOVERNMENT LAND  
PORTION OF THE  
APPLICATION SITE  
SURVEYED TREE  
GVXX GENERAL VIEW

## Appendix II –Tree Survey Schedule

Tree Survey Schedule

Location:  
Tree surveyor(s):  
Field Survey was conducted on:

Lots 2063 And 2064 In D.D. 106 and Adjoining Government Land, Kam Tin, Yuen Long, New Territories (Former Shek Wu School)  
Mak Ka Hei  
25 October 2024



Tree No.	Tree Species		Tree Size Measurements			Amenity Value	Form	Health Condition	Structural Condition	Suitability for Transplanting	Remarks
	Botanical Name	Chinese Name	Overall Height (m)	DBH (mm)	Average Crown Spread (m)	High /Med /Low	Good /Fair /Poor	Good /Fair /Poor /Dead	Good /Fair /Poor	High /Med /Low	
T1	<i>Bougainvillea spectabilis</i>	光葉子花 (簕杜鵑)	5.5	310	4.0	Low	Fair	Fair	Poor	Low	multi-trunks
T2	<i>Macaranga tanarius</i> var. <i>tomentosa</i>	血桐	7.0	130	5.0	Low	Fair	Fair	Poor	Low	topped trunk, restricted root, decay at trunk
T3	<i>Macaranga tanarius</i> var. <i>tomentosa</i>	血桐	6.0	191	5.0	Low	Fair	Fair	Poor	Low	co-dominant trunks, restricted root
T4	<i>Bougainvillea spectabilis</i>	光葉子花 (簕杜鵑)	6.0	300	4.0	Low	Fair	Fair	Poor	Low	multi-trunks
T5	<i>Cinnamomum camphora</i>	樟	6.0	135	4.0	Low	Fair	Fair	Poor	Low	multi-trunks
T6	<i>Celtis sinensis</i>	朴樹	7.0	95	4.0	Low	Fair	Fair	Fair	Low	-
T7	<i>Ilex rotunda</i>	鐵冬青	7.0	206	4.0	Low	Fair	Fair	Poor	Low	co-dominant trunks, included bark
T8	<i>Celtis sinensis</i>	朴樹	7.0	95	4.0	Low	Fair	Fair	Fair	Low	
T9	<i>Cinnamomum camphora</i>	樟	7.0	109	4.0	Low	Fair	Fair	Poor	Low	multi-trunks
T10	<i>Delonix regia</i>	鳳凰木	8.0	100	4.5	Low	Fair	Fair	Fair	Low	
T11	<i>Delonix regia</i>	鳳凰木	7.0	120	4.0	Low	Fair	Fair	Fair	Low	
T12	<i>Celtis sinensis</i>	朴樹	7.0	100	4.0	Low	Fair	Fair	Poor	Low	co-dominant trunks, included bark
T13	<i>Cinnamomum camphora</i>	樟	15.0	1500	16.0	Low	Fair	Poor	Poor	Low	dieback twigs, co-dominant trunks, wound on trunk, decay at trunk, trunk conflict with fence
T14	<i>Delonix regia</i>	鳳凰木	12.0	1400	18.0	Low	Poor	Poor	Poor	Low	crown conflict with building, wound on branch, trunk conflict with fence, uprooted, decay at root
T15	<i>Lophostemon confertus</i>	紅膠木	10.0	380	6.0	Low	Fair	Poor	Fair	Low	cavity at trunk, dieback twigs
T16	<i>Ficus microcarpa</i>	榕樹(細葉榕)	7.0	164	4.0	Low	Fair	Poor	Poor	Low	co-dominant trunks, cavity at trunk
T17	<i>Ilex rotunda</i>	鐵冬青	11.0	540	9.0	Low	Fair	Poor	Poor	Low	split wound at branch, splited and decay at branch, decay at trunk, restricted root, cavity at branch
T18	<i>Dimocarpus longan</i>	龍眼	13.0	320	8.0	Med	Fair	Poor	Fair	Low	hanger, dead branch, decay at trunk
T19	<i>Dimocarpus longan</i>	龍眼	14.0	1100	8.0	Med	Fair	Poor	Poor	Low	decay at trunk, wound on trunk, trunk conflict with fence
T20	<i>Dimocarpus longan</i>	龍眼	13.0	600	8.0	Med	Fair	Poor	Poor	Low	co-dominant trunks with included bark, decay at branch, cavity at trunk, exposed root
T21	<i>Ficus microcarpa</i>	榕樹(細葉榕)	7.0	170	6.0	Low	Fair	Poor	Poor	Low	multi-trunks, trunk girdling, dead stub, bulge, cross branches, pruning wound with epicormics, drooping branches, wound on trunk, wire embedded in trunk
T22	<i>Ligustrum sinense</i>	山指甲	5.5	112	4.0	Low	Fair	Fair	Poor	Low	co-dominant trunks

Notes: Amenity Value, Form, Health Condition and Structural Condition of trees were obtained by Visual Assessment Only.

## Appendix III – Photo Records



# General View



General view 01



General view 02



# General View



General view 03



General view 04



# General View



General view 05



General view 06



# General View



General view 07



General view 08



# General View



General view 09



# Photo Records



T1 (Overview)



T2 (Overview)



T2 Restricted root (Decay at trunk)



T2 Topped trunk



# Photo Records



T3 (Overview)



T3 Restricted root



T4 (Overview)



T5 (Overview)



# Photo Records



T6 (Overview)



T7 (Overview)



T7 Included bark



T8 (Overview)



# Photo Records



T9 (Overview)



T10 (Overview)



T11 (Overview)



T12 (Overview)



# Photo Records



T12 Co-dominant trunks with included bark



T13 (Overview)



T13 Co-dominant trunks



T13 Decay at trunk\_1



# Photo Records



T13 Decay at trunk\_2



T13 Dieback twigs



T13 Trunk conflict with fence



T13 Wound on trunk



# Photo Records



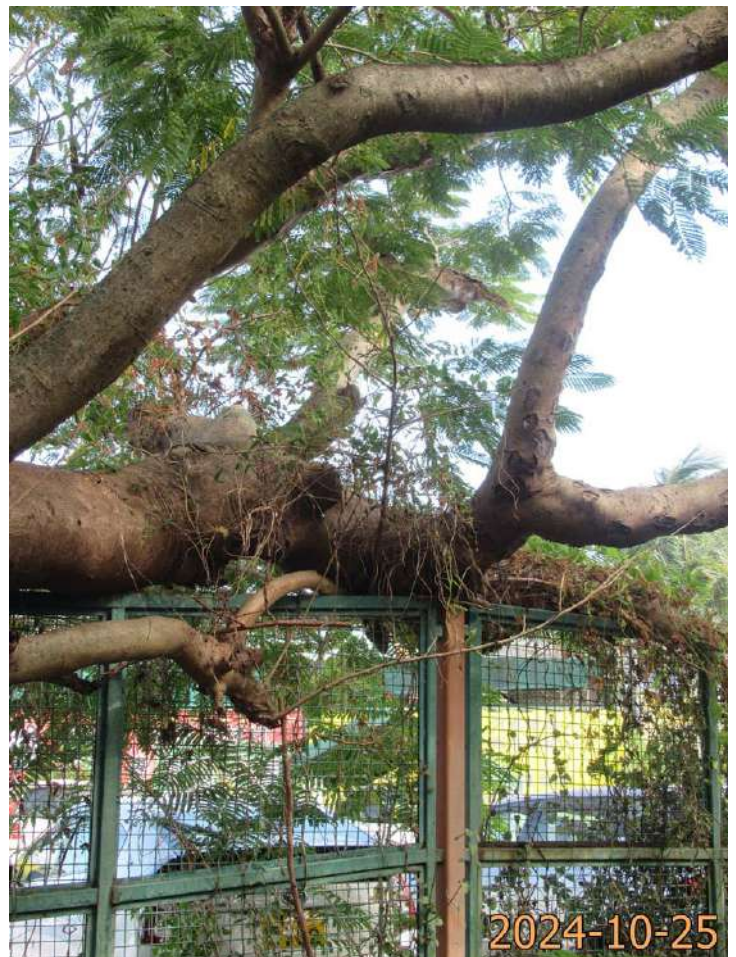
T14 (Overview)



T14 Crown conflict with building



T14 Decay at root



T14 Trunk conflict with fence



# Photo Records



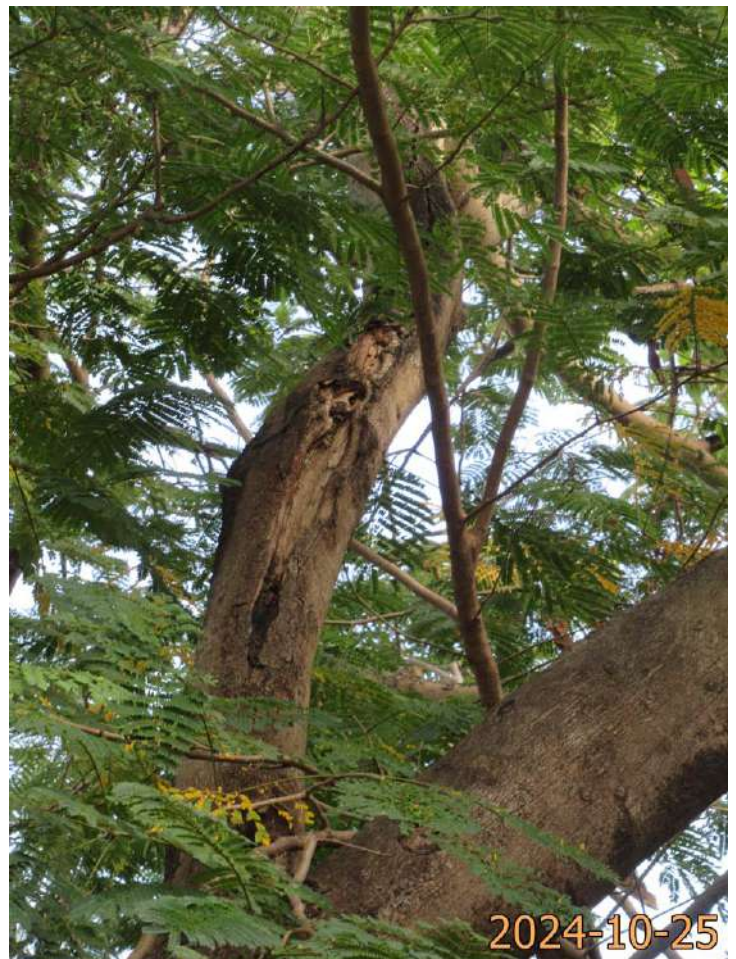
T14 Uprooted\_1



T14 Uprooted\_2



T14 Uprooted\_3



T14 Wound on branch\_1



# Photo Records



T14 Wound on branch\_2



T15 (Overview)



T15 Cavity at trunk



T15 Dieback twigs



# Photo Records



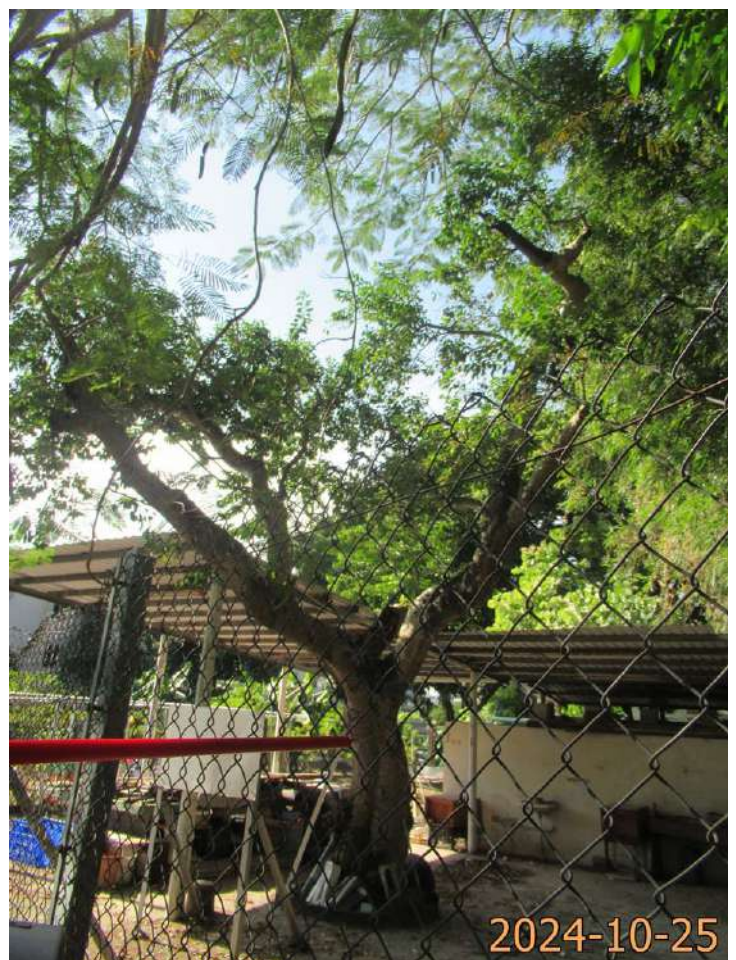
T16 (Overview)



T16 Cavity at trunk



T16 Co-dominant trunks



T17 (Overview)



# Photo Records



T17 Cavity at branch



T17 Decay at trunk



T17 Restricted root



T17 Split wound at branch



# Photo Records



T17 Splited and decay at branch



T18 (Overview)



T18 Dead branch



T18 Decay at trunk



# Photo Records



T18 Hanger



T19 (Overview)



T19 Dead branch



T19 Decay at trunk\_1



# Photo Records



T19 Decay at trunk\_2



T19 Trunk conflict with fence



T19 Wound on trunk



T20 (Overview)



# Photo Records



T20 Cavity at trunk



T20 Co-dominant trunks with included bark



T20 Decay at branch



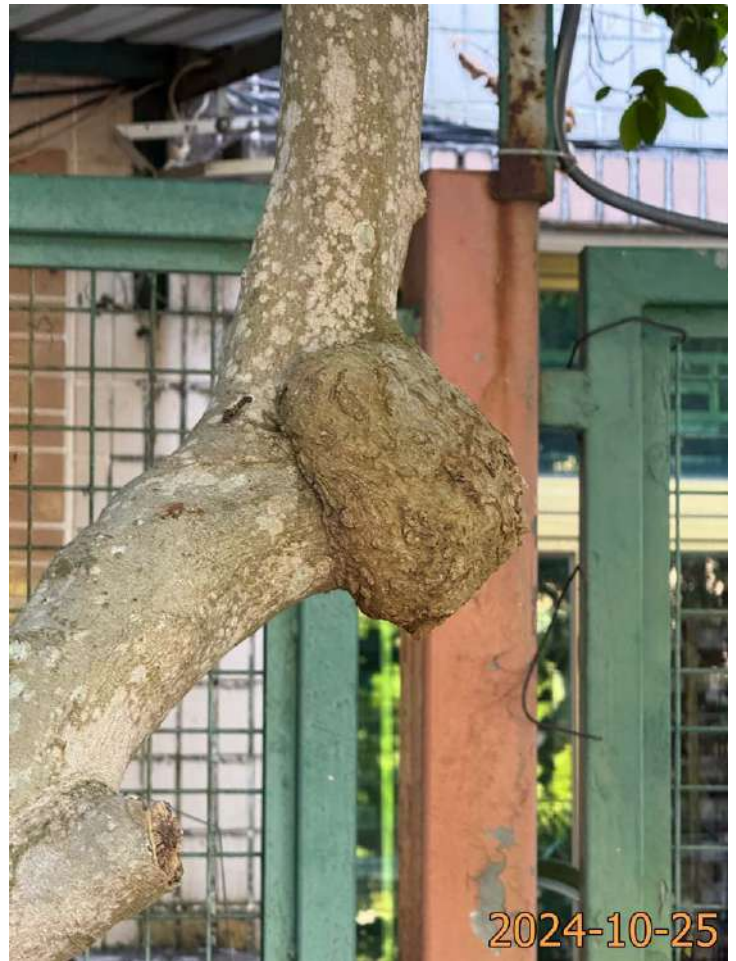
T20 Exposed root



# Photo Records



T21 (Overview)



T21 Bulge



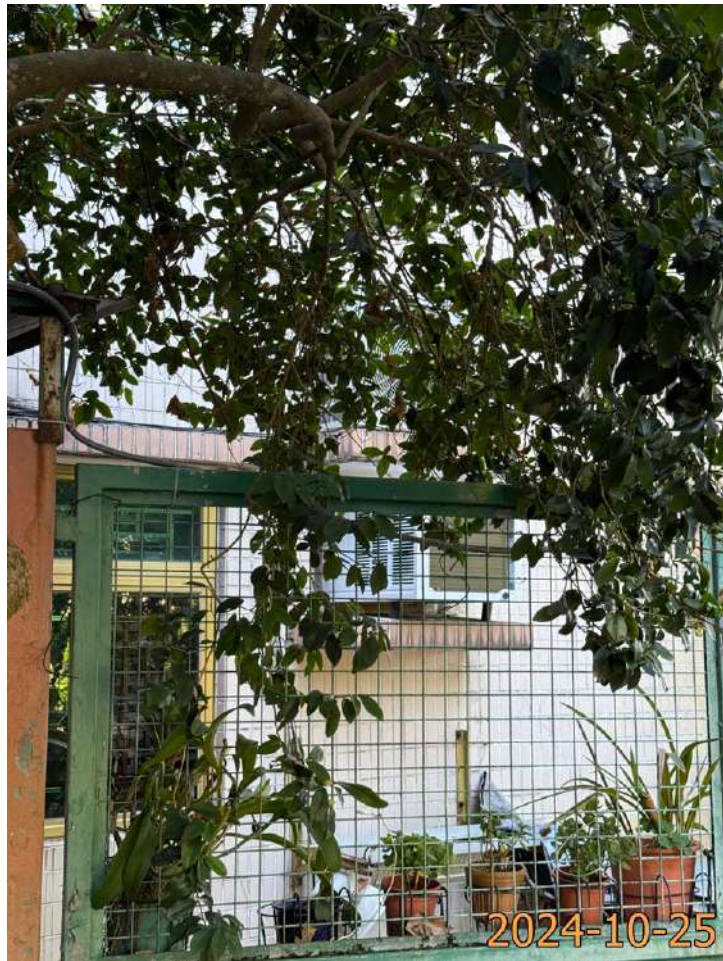
T21 Cross branches



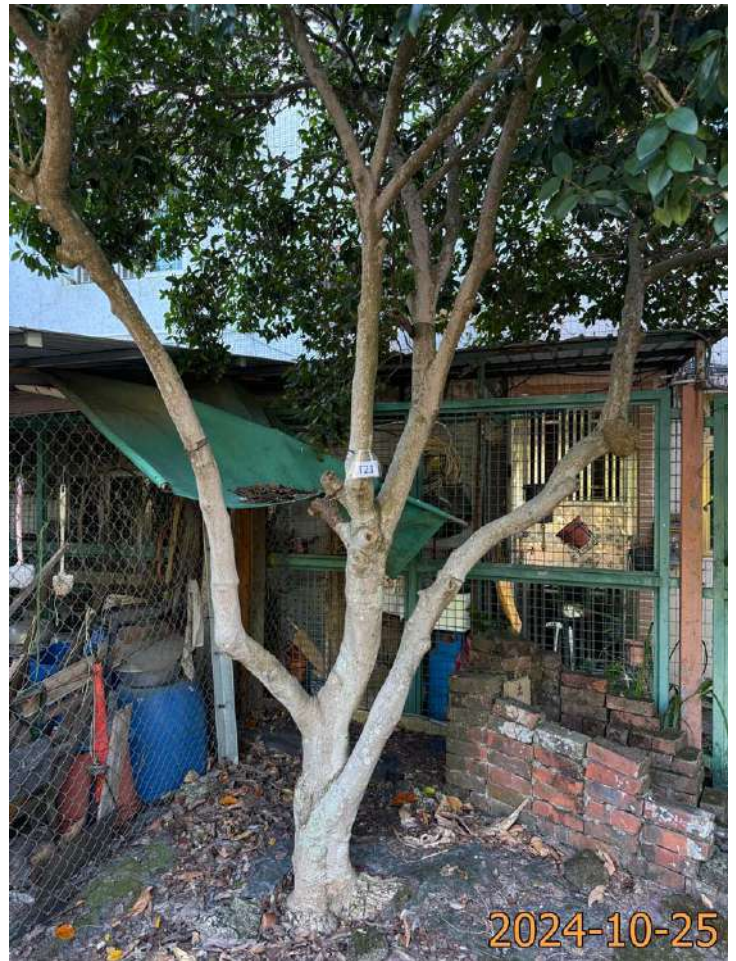
T21 Dead stub



# Photo Records



T21 Drooping branches



T21 Multi-trunks



T21 Pruning wound with epicormics



T21 Trunk girdling



# Photo Records



T21 Wire embedded in trunk



T21 Wound on trunk



T22 (Overview)