

## **LIST OF APPENDICES**

<b>Appendix I</b>	Fire service installations proposal
<b>Appendix II</b>	As-built drainage plan
<b>Appendix III</b>	Photographic record of the existing drainage facilities
<b>Appendix IV</b>	Public transportation services in the vicinity of the Site

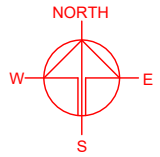
## **Appendix I**

### Fire service installations proposal

## DEVELOPMENT PARAMETERS

APPLICATION SITE AREA	: 3,271 m <sup>2</sup>	(ABOUT)
COVERED AREA	: 591 m <sup>2</sup>	(ABOUT)
UNCOVERED AREA	: 2,680 m <sup>2</sup>	(ABOUT)
PLOT RATIO	: 0.18	(ABOUT)
SITE COVERAGE	: 18%	(ABOUT)
NO. OF STRUCTURE	: 7	
DOMESTIC GFA	: NOT APPLICABLE	
NON-DOMESTIC GFA	: 591m <sup>2</sup>	(ABOUT)
TOTAL GFA	: 591 m <sup>2</sup>	(ABOUT)
BUILDING HEIGHT	: 3 m - 5 m	(ABOUT)
NO. OF STOREY	: 1	

STRUCTURE	USE	COVERED AREA	GROSS FLOOR AREA	BUILDING HEIGHT
B1	RECEPTION, SITE OFFICE, WASHROOM, RELIGIOUS ACTIVITIES ROOM	220 m <sup>2</sup> (ABOUT)	220 m <sup>2</sup> (ABOUT)	3.5 m (ABOUT)(1-STOREY)
B2	AGRICULTURAL LEARNING ROOM	152 m <sup>2</sup> (ABOUT)	152 m <sup>2</sup> (ABOUT)	3.5 m (ABOUT)(1-STOREY)
B3	FS WATER TANK AND CONTROL ROOM, AND PANTRY	70 m <sup>2</sup> (ABOUT)	70 m <sup>2</sup> (ABOUT)	4 m (ABOUT)(1-STOREY)
B4	STAGE FOR DEMONSTRATION OF VARIOUS ACTIVITIES	54 m <sup>2</sup> (ABOUT)	54 m <sup>2</sup> (ABOUT)	5 m (ABOUT)(1-STOREY)
B5	STORAGE OF FISHING TOOLS	50 m <sup>2</sup> (ABOUT)	50 m <sup>2</sup> (ABOUT)	3 m (ABOUT)(1-STOREY)
B6	STORAGE OF FARMING TOOLS	15 m <sup>2</sup> (ABOUT)	15 m <sup>2</sup> (ABOUT)	3 m (ABOUT)(1-STOREY)
B7	STORAGE OF FARMING AND FISHING TOOLS AND METER ROOM	30 m <sup>2</sup> (ABOUT)	30 m <sup>2</sup> (ABOUT)	3 m (ABOUT)(1-STOREY)
TOTAL		591 m <sup>2</sup> (ABOUT)	591 m <sup>2</sup> (ABOUT)	

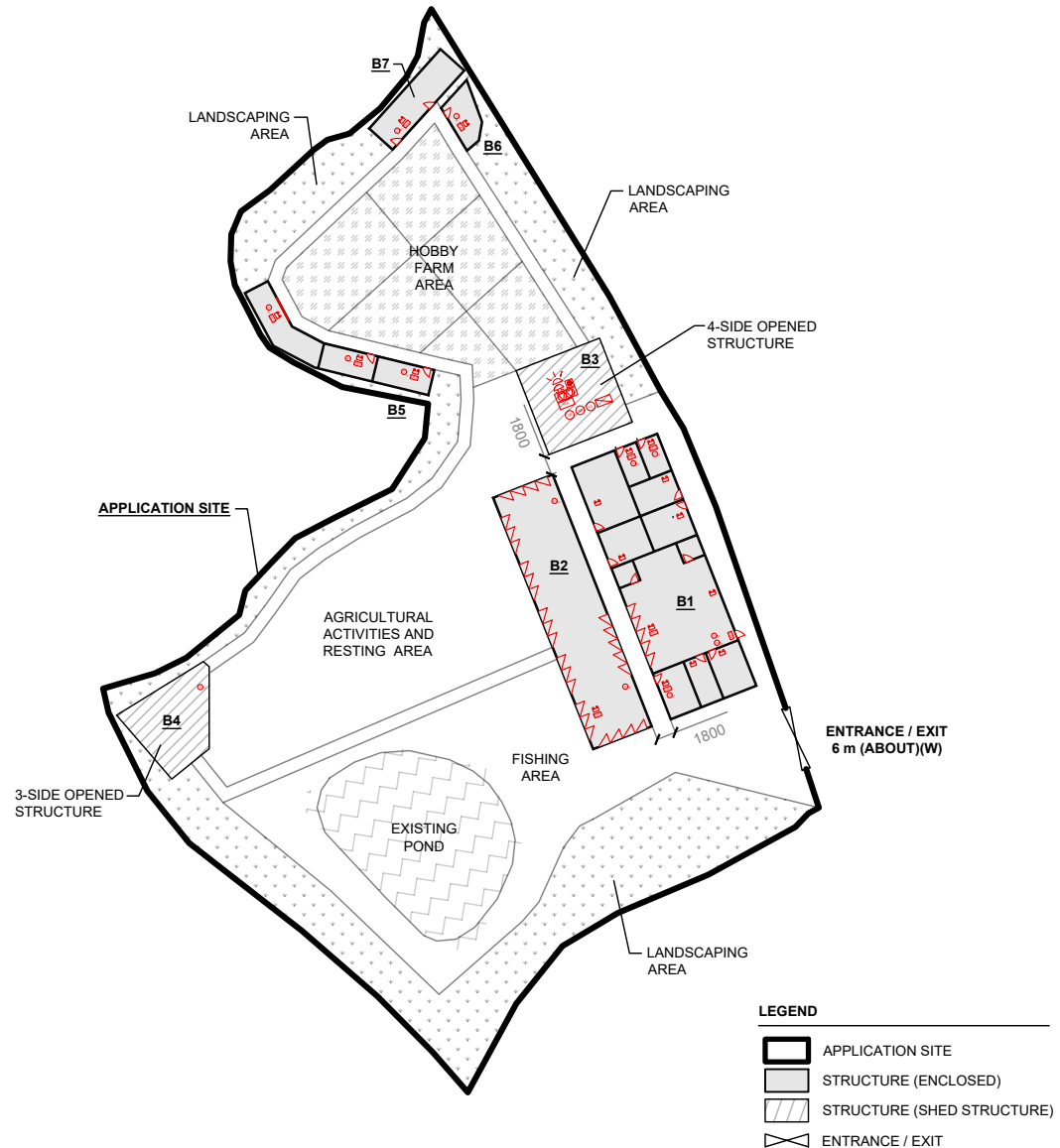


## FS NOTES:

- SUFFICIENT EMERGENCY LIGHTING SHALL BE PROVIDED THROUGHOUT THE ENTIRE BUILDING IN ACCORDANCE WITH BS5266-1:2016, BS EN 1838:2013 AND FSD CIRCULAR LETTER NO. 4/2021.
- SUFFICIENT DIRECTIONAL AND EXIT SIGN SHALL BE PROVIDED IN ACCORDANCE WITH BS5266-1:2016 AND FSD CIRCULAR LETTER 5/2008.
- FIRE ALARM SYSTEM PROVIDED THROUGHOUT THE ENTIRE BUILDING IN ACCORDANCE WITH BS+5839-1:2002A 2:2008 AND FSD CIRCULAR LETTER. 1/2009 ONE ACATUATION POINT SHOULD INCLUDE FACILITIES FOR FIRE PUMP START AND AUDIO /VISUAL WARNING DEVICE INITIATION.
- A MODIFIED HOSE REEL SYSTEM SUPPLIED BY 2m<sup>3</sup> FS WATER TANK SHALL BE PROVIDED. THERE SHALL BE SUFFICIENT HOSE REELS TO ENSURE THAT EVERY PART OF EACH BUILDING CAN BE REACH BY A LENGTH OF NOT MORE THAN 30m OF HOSE REEL TUBING.
- POTABLE HAND-OPERATED APPROVED APPLICATION SHALL BE PROVIDED AS REQUIRED BY OCCUPANCY.
- WHERE AN ELECTRICAL INSTALLATION IS REQUIRED TO COMPLY WITH THIS CODE, A PRIMARY AND SECONDARY SOURCE OF SUPPLY SHALL BE PROVIDED TO THE SATISFACTION OF THE DIRECTOR OF FIRE SERVICES AND ALL SUCH INSTALLATIONS SHALLBE FED FROM BOTH THE PRIMARY AND SECONDARY SOURCE OF SUPPLY.

## FIRE SERVICE INSTALLATIONS

	EXIT SIGN
	VISUAL FIRE ALARM
	FIRE ALARM BELL
	MANUAL FIRE ALARM CALL POINT
	EMERGENCY LIGHT
	SAND BUCKET
	4 KG POWDER-TYPE FIRE EXTINGUISHER
	4.5 KG GAS-TYPE FIRE EXTINGUISHER
	2m³ FS WATER TANK
	HOSE REEL PUMP CONTROL PANEL
	FS HOSE REEL
	FIRE HOSE REEL PUMP WITH ENCLOSURE



NO PARKING AND LOADING / UNLOADING SPACE IS PROVIDED AT THE APPLICATION SITE.

PLANNING CONSULTANT



PROJECT

PROPOSED TEMPORARY PLACE OF RECREATION, SPORTS OR CULTURE (HOBBY FARM AND FISHING GROUND) AND RELIGIOUS INSTITUTION WITH ANCILLARY FACILITIES AND ASSOCIATED FILLING OF LAND FOR A PERIOD OF 5 YEARS

SITE LOCATION

VARIOUS LOTS IN D.D. 103, KAM TIN, YUEN LONG, NEW TERRITORIES

SCALE

1 : 700 @ A4

DRAWN BY

MN

DATE

14.7.2025

CHECKED BY

DATE

APPROVED BY

DATE

DWG. TITLE

FSIs PROPOSAL

DWG NO.

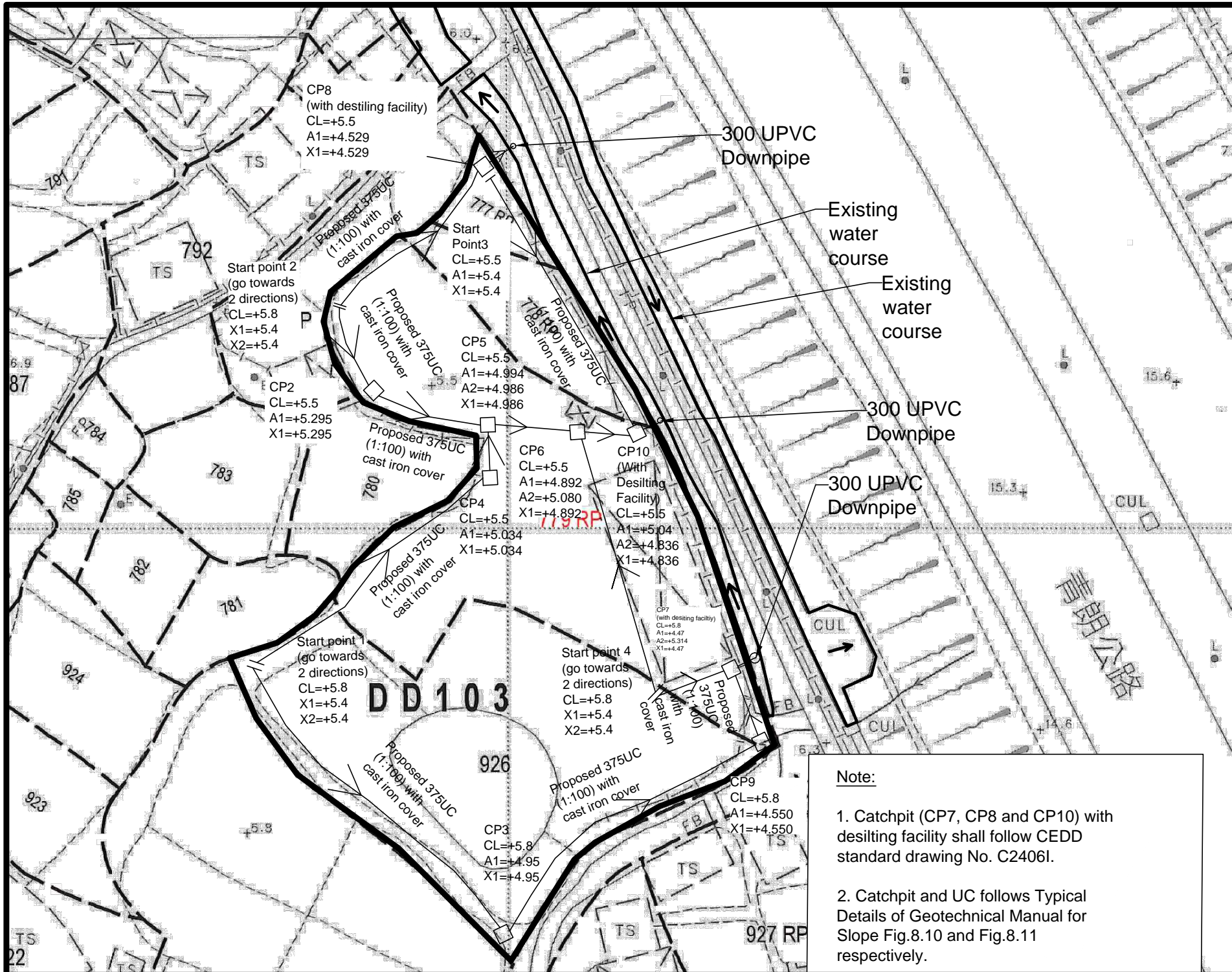
APPENDIX I

VER.

001

## **Appendix II**

As-built drainage plan



Legend:

→ Proposed 450UC (1:100) with cast iron cover

→ Existing Water Course

□ Proposed Catchpit

⊕ Existing Level

Company:

恆協工程有限公司  
Handship Engineering Company Limited

Project:

Temporary Place of Recreation, Sports or Culture (Hobby Farm) for a Period of 5 Years in "Agriculture" Zone, Lots 777 RP, 778 RP, 779 RP and 926 in D.D. 103, Kam Tin, Yuen Long, New Territories

Title:

Drainage Proposal-Layout

Dwg No:

Fig.3

Date:

7 Feb 2020

File:

Lots 777 RP, 778 RP, 779 RP and 926 in D.D. 103, Kam Tin, Yuen Long

# Note:

1. Catchpit (CP7, CP8 and CP10) with desilting facility shall follow CEDD standard drawing No. C24061.

2. Catchpit and UC follows Typical Details of Geotechnical Manual for Slope Fig.8.10 and Fig.8.11 respectively.

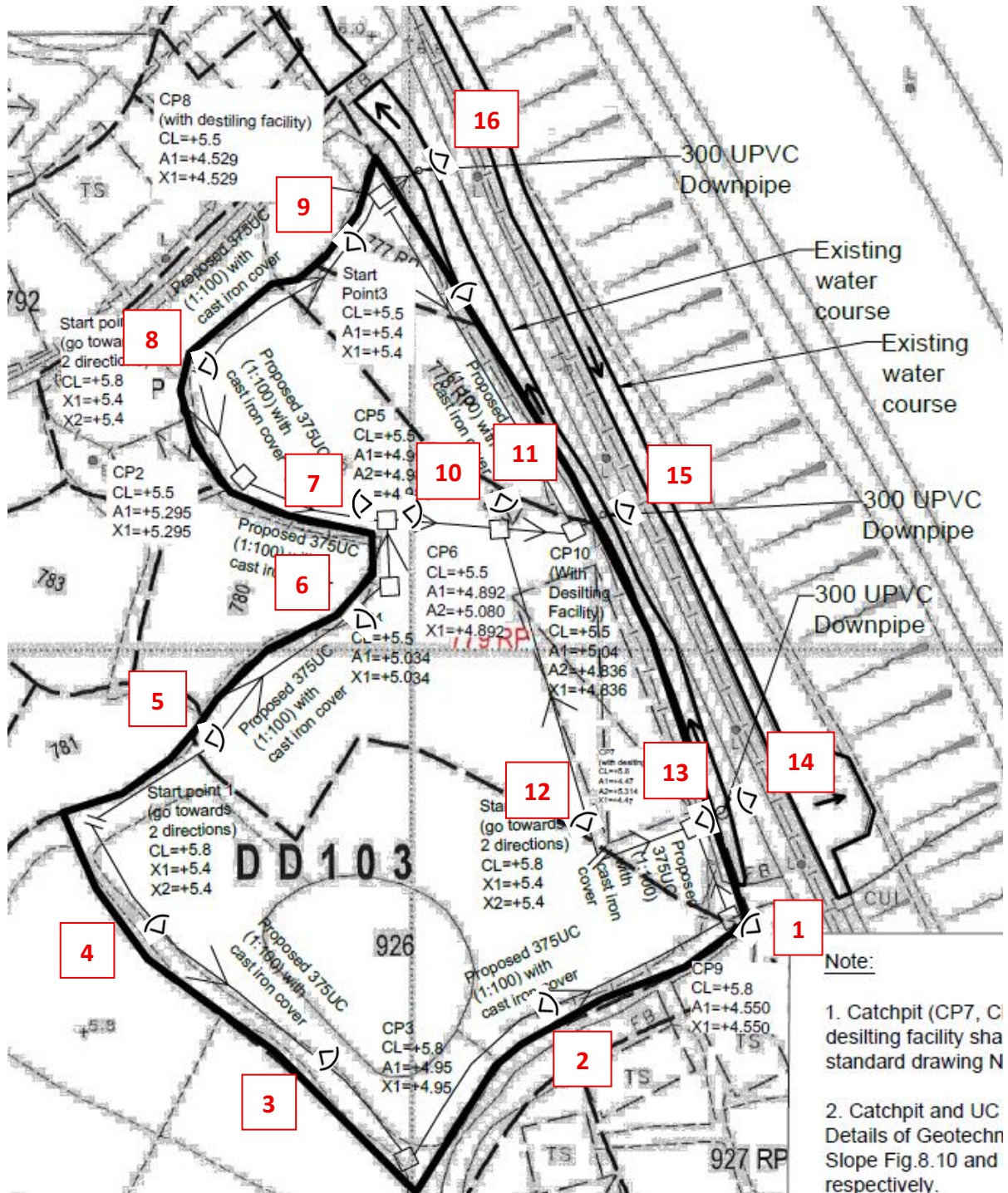
### **Appendix III**

Photographic record of the existing drainage facilities



### Appendix III – Photographic record of the existing drainage facilities (taken on 07.08.2025)

Figure 1 – Extract of the as-built drainage plan with viewpoints of the photographic record







**Viewpoint 1**



**Viewpoint 2**





**Viewpoint 3**



**Viewpoint 4**





**Viewpoint 5**



**Viewpoint 6**





**Viewpoint 7**



**Viewpoint 8**





**Viewpoint 9**



**Viewpoint 10**





**Viewpoint 11**



**Viewpoint 12**



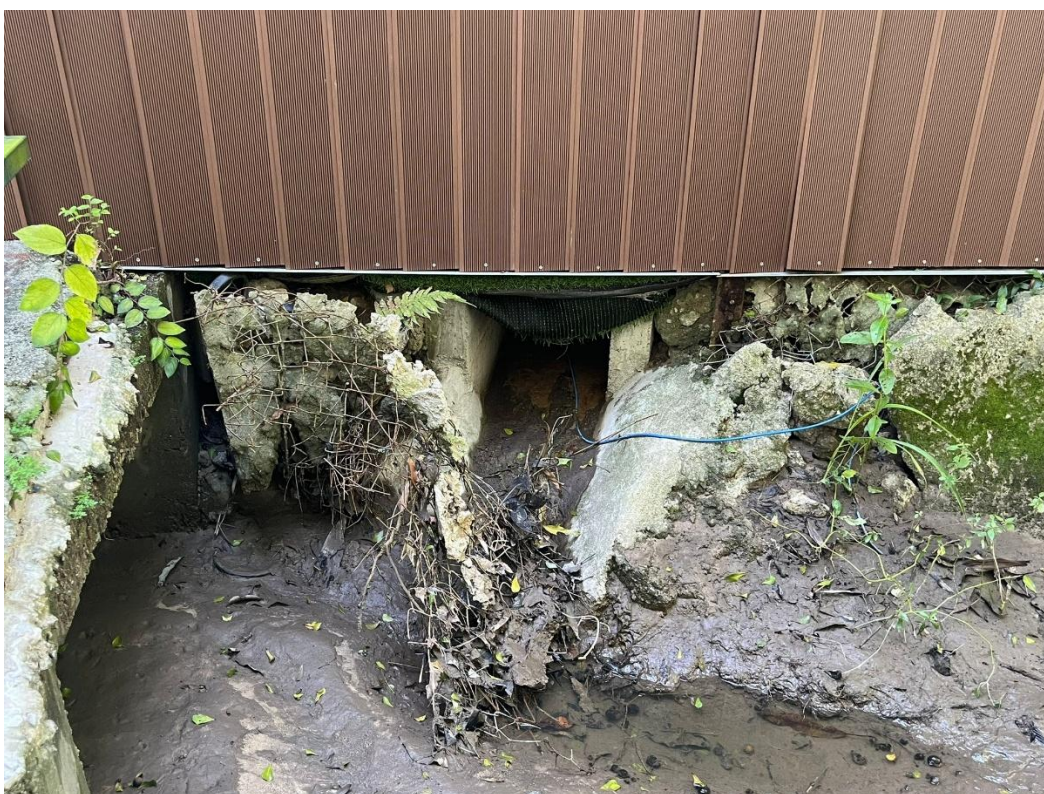


**Viewpoint 13**



**Viewpoint 14**





**Viewpoint 15**



**Viewpoint 16**

#### **Appendix IV**

##### **Public transportation services in the vicinity of the Site**



#### Appendix IV – Public transportation services in the vicinity of the Site

**Figure 1 – Public transportation services during the operation hours of the Site**

Route	Termination Points		Frequency (mins) <sup>1</sup>
MTR			
Tuen Ma Line	Tuen Mun	Wu Kai Sha	2.7 - 7.3
Franchised Bus			
54	Yuen Long (West)	Sheung Tsuen	30
64K	Yuen Long (West)	Tai Po Market Station	8 - 12
77K	Yuen Long (Fung Cheung Road)	Sheung Shui	12 - 25
251A	Sheung Tsuen	Kam Sheung Road Station	15 - 20
251B	Sheung Tsuen	Pat Heung Road	20 - 25
251C	Yuen Long	Kong Ha Wai	30
268	Yau Pok Road Housing (South)	Pat Heung Road	30
A36	Airport	Kam Sheung Road Station	15 - 30
GMB			
71	Yuen Long (Tai Hang Street)	Shek Wu Tong (Ho Pui)	15
71A	Kam Sheung Road Station	Cheung Po Tsuen	20 - 30
72	Yuen Long (Tai Hang Street)	Lui Kung Tin	10
78	Lok Ma Chau (San Tin)	Pat Heung Road	20 - 25
78A	Kam Sheung Road Station	Pat Heung Road	15 - 17
601	Yuen Long (Fung Cheung Road)	Pak Wai Tsuen	10 - 20
601B	Kam Sheung Road Station	Pak Wai Tsuen	20
602	Yuen Long (Fung Cheung Road)	Tai Kong Po	15 - 20
602C	Yuen Long (Fung Cheung Road)	Kam Sheung Road Station	20
608	Yuen Long (Fung Cheung Road)	Wang Toi Shan	10 - 13
608S	Kam Sheung Road Station	Concordia	15 - 30
620	Kam Sheung Road Station	Park YOHO	10 - 15

<sup>1</sup> Source: HKeMobility

**Figure 2** – Location of public transportation services

