

**Temporary Shop and Services and Vehicles Repair Workshop
(Excluding Repair of Container Vehicle) for a Period of 3 Years
at
Lots 455 S.B (Part) & 475 (Part) in D.D. 106, Kam Sheung Road, Kam
Tin, Yuen Long, N.T.**

Annex 1 Estimated Traffic Generation

- 1.1 The application site is served by a vehicular track leading from Kam Sheung Road.
- 1.2 The estimated average traffic generation and traffic generation rate at peak hours are as follow:

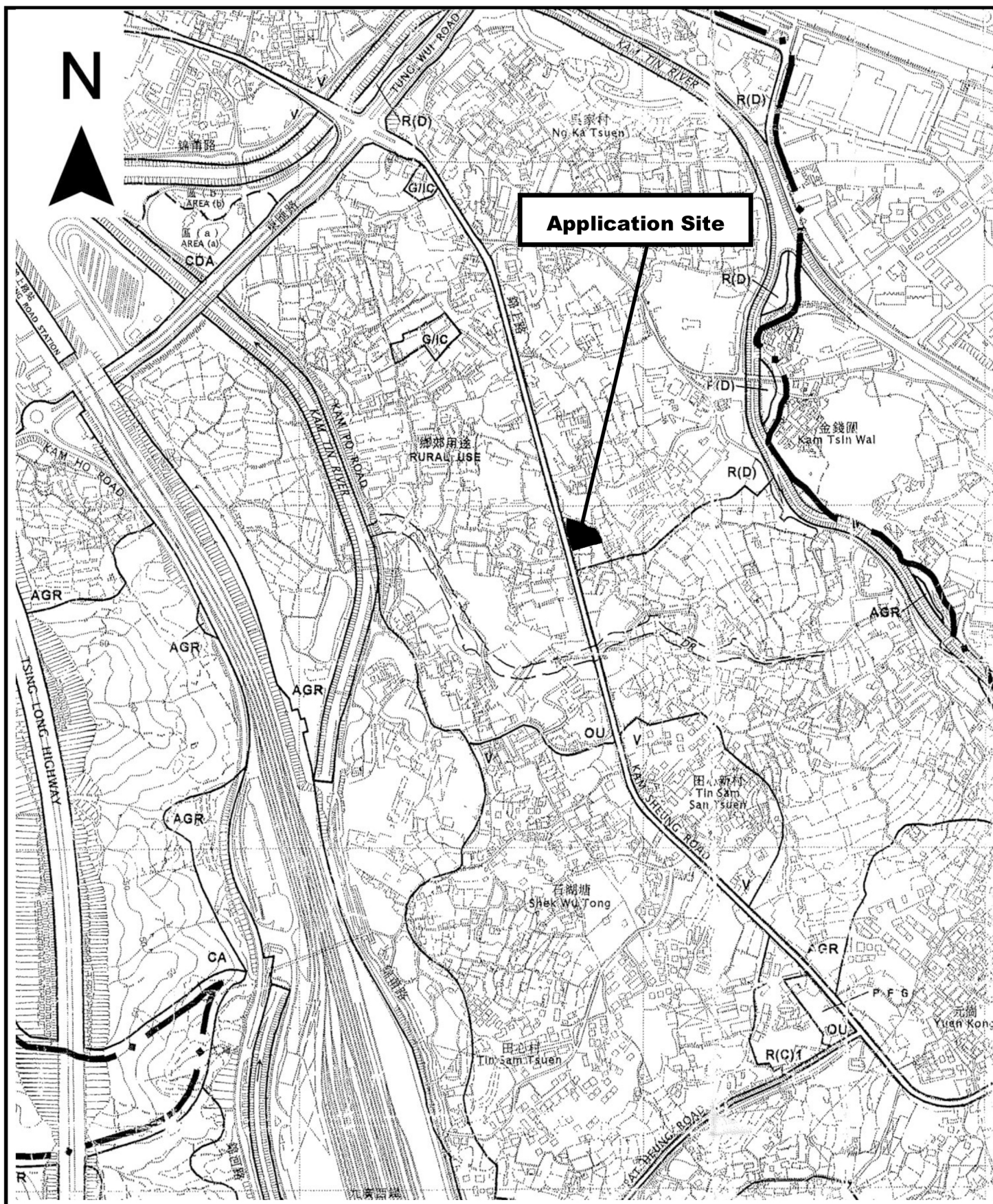
Type of Vehicle	<u>Average</u> Traffic Generation Rate (pcu/hr)	<u>Average</u> Traffic Attraction Rate (pcu/hr)	Traffic Generation Rate at <u>Peak Hours</u> (pcu/hr)	Traffic Attraction Rate at <u>Peak Hours</u> (pcu/hr)
Private car	0.1	0.1	1	0
Light goods vehicle	0.15	0.15	1.5	0
Heavy goods vehicle	0.4	0.4	2	2
Total	0.5	0.5	4.5	2

Note 1: The opening hour of the proposed development is restricted to 9:00 a.m. to 7:00 p.m. from Mondays to Saturdays. No operation will be held on Sundays and public holidays;

Note 2: The pcu of private car, light goods vehicle and heavy goods vehicle is taken as 1, 1.5 and 2 respectively; &

Note 3: Morning peak is defined as 7:00a.m. to 9:00a.m. whereas afternoon peak is defined as 5:00p.m. to 7:00p.m.

- 1.3 As shown in the above estimation, it is estimated that the proposed development would not generate significant amount of traffic. It would not affect the traffic condition of Kam Sheung Road especially that the traffic generated and attracted by the proposed development is not within peak hours and the application site is actually limited in size. The negligible increase in traffic would not aggravate the traffic condition of Kam Sheung Road and nearby road networks.



Project 項目名稱:

Temporary Shop and Services and Vehicles Repair Workshop (Excluding Repair of Container Vehicle) for a Period of 3 Years at Lots 455 S.B (Part) & 475 (Part) in D.D. 106, Kam Sheung Road, Kam Tin, Yuen Long, N.T.

Drawing Title 圖目:

Location Plan

Remarks 備註:

Drawing No. 圖號:

Figure 2

Scale 比例:

1:7500



Structure 1

Shop & services, site office & toilet
GFA: Not exceeding 200m²
Height: Not exceeding 6.5m
No. of storey: 2

Structure 2

Open shed for vehicle
inspection
GFA: Not exceeding 60m²
Height: Not exceeding 5m
No. of storey: 1

10m wide
Ingress/Egress

1 loading/unloading bay of
7m x 3.5m for
light goods vehicle

Structure 4

Electricity meter room
GFA: Not exceeding 4m²
Height: Not exceeding 3m
No. of storey: 1

1 parking space of
5m x 2.5m for
private car

Structure 3

Open shed for Vehicle Repair
Workshop
GFA: Not exceeding 230m²
Height: Not exceeding 8m
No. of storey: 1

Project 項目名稱:

Temporary Shop and Services and
Vehicles Repair Workshop
(Excluding Repair of Container
Vehicle) for a Period of 3 Years at
Lots 455 S.B (Part) & 475 (Part) in
D.D. 106, Kam Sheung Road, Kam
Tin, Yuen Long, N.T.

Drawing Title 圖目:

Proposed Layout Plan

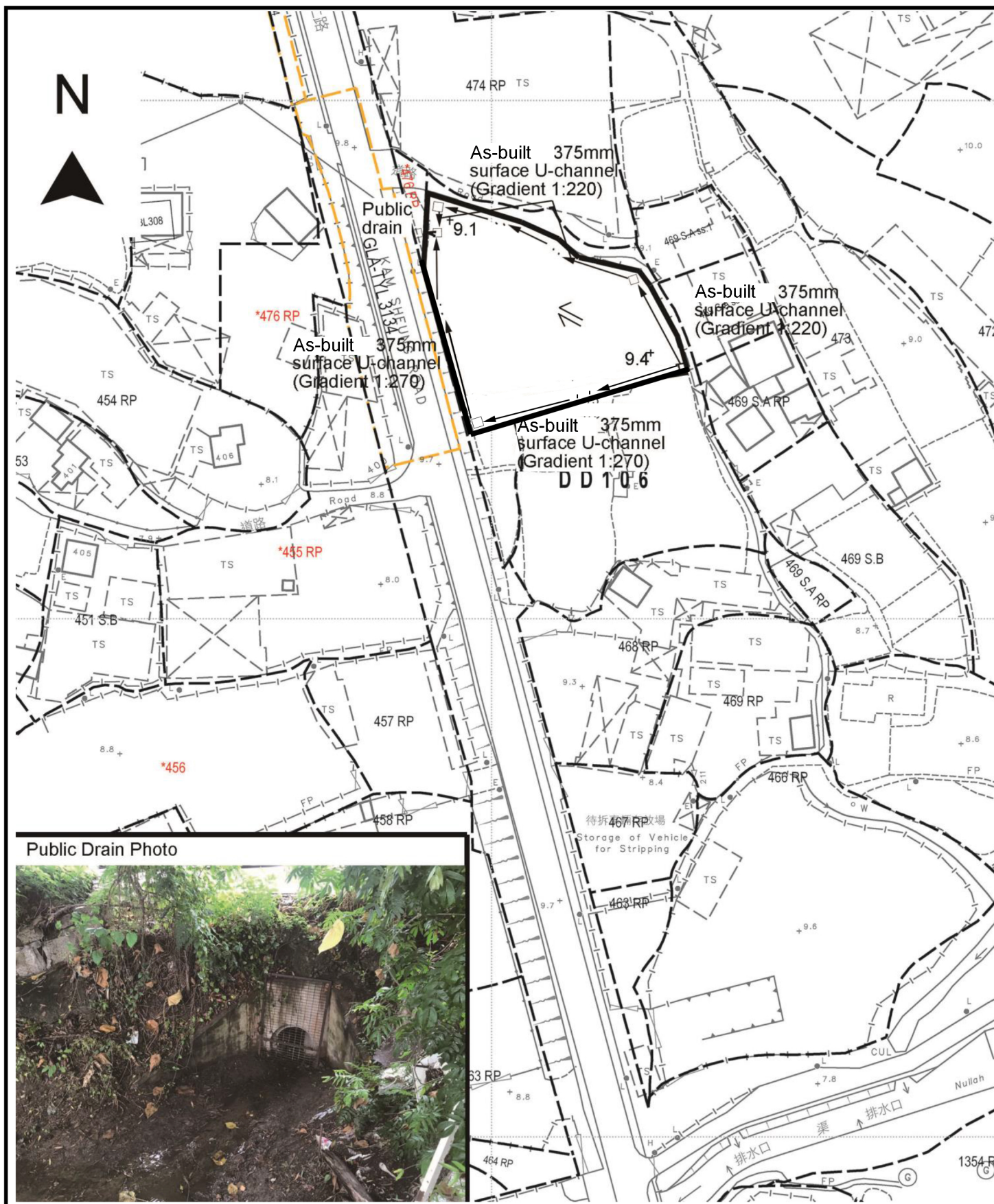
Remarks 備註:

Drawing No. 圖號:

Figure 3

Scale 比例:

1:1000



Project 項目名稱:

Temporary Shop and Services and Vehicles Repair Workshop (Excluding Repair of Container Vehicle) for a Period of 3 Years at Lots 455 S.B (Part) & 475 (Part) in D.D. 106, Kam Sheung Road, Kam Tin, Yuen Long, N.T.

Drawing Title 圖目:

As-built Drainage Plan

Drawing No. 圖號:

Figure 4

Remarks 備註:

- ☐ Proposed catchpit
- + 9.4 Level (in mPD)
- ⇐ Flow of surface runoff

Scale 比例:

1:1000