

Appendix I

Fire Service Installations Proposal

DEVELOPMENT PARAMETERS

APPLICATION SITE AREA	: 3,416 m ²	(ABOUT)
COVERED AREA	: 590 m ²	(ABOUT)
UNCOVERED AREA	: 2,826 m ²	(ABOUT)
PLOT RATIO	: 0.17	(ABOUT)
SITE COVERAGE	: 17 %	(ABOUT)
NO. OF STRUCTURE	: 3	
DOMESTIC GFA	: NOT APPLICABLE	
NON-DOMESTIC GFA	: 590 m ²	(ABOUT)
TOTAL GFA	: 590 m ²	(ABOUT)
BUILDING HEIGHT	: 9 m	(ABOUT)
NO. OF STOREY	: 1	
OPEN STORAGE AREA	: 1,729 m ²	(ABOUT)
STACKING HEIGHT	: NOT MORE THAN 3 m	

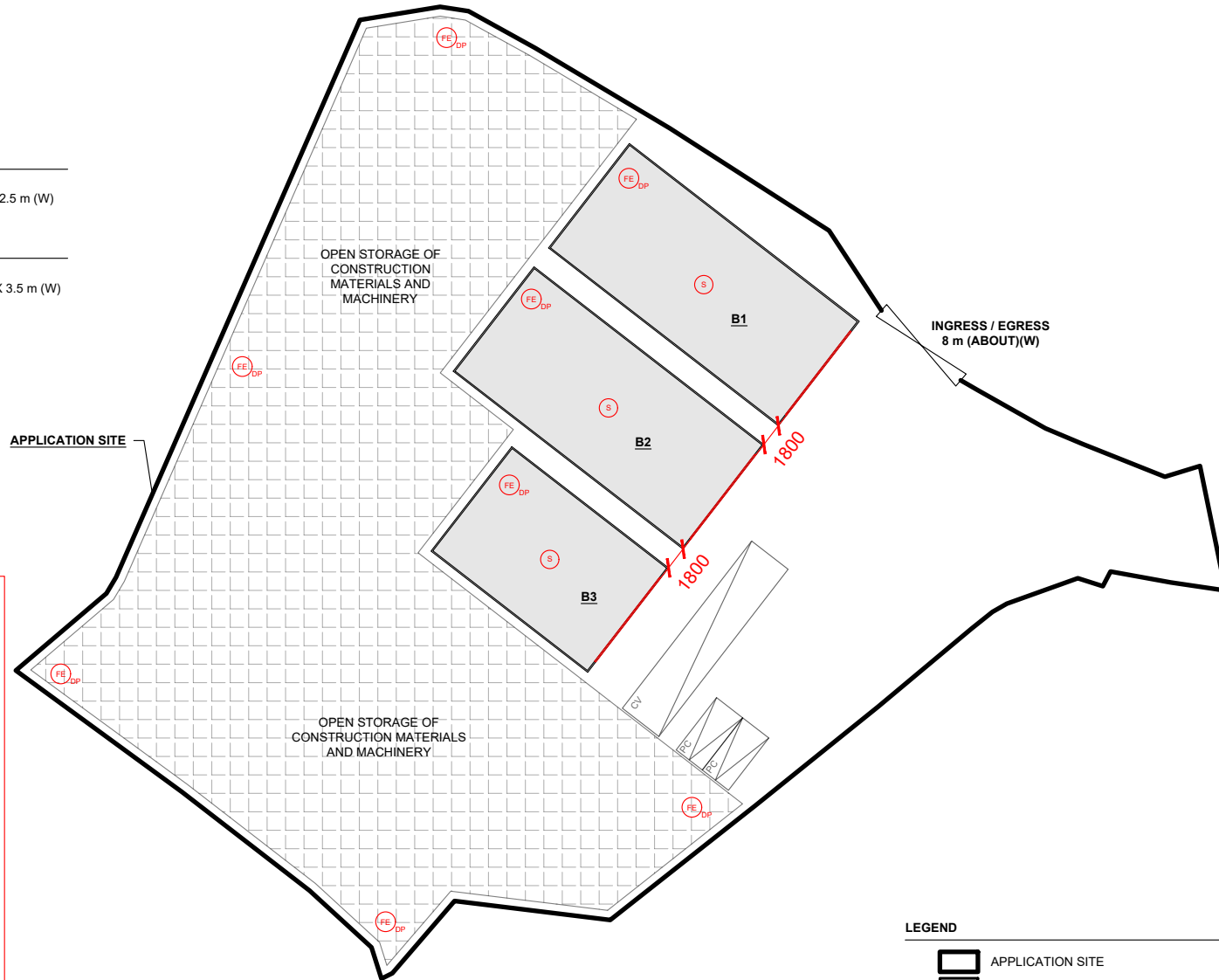
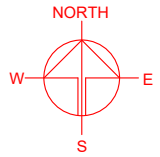
PARKING PROVISIONS

NO. OF PRIVATE CAR PARKING SPACE	: 2
DIMENSION OF PARKING SPACE	: 5 m (L) X 2.5 m (W)

LOADING/UNLOADING PROVISIONS

NO. OF L/UL SPACE FOR HEAVY GOODS VEHICLE	: 1
DIMENSION OF L/UL SPACE	: 11 m (L) X 3.5 m (W)

STRUCTURE	USE	COVERED AREA	GROSS FLOOR AREA	BUILDING HEIGHT
B1	WAREHOUSE (EXCLUDING D.G.G.)	220 m ² (ABOUT)	220 m ² (ABOUT)	9 m (ABOUT)(1-STOREY)
B2	WAREHOUSE (EXCLUDING D.G.G.)	220 m ² (ABOUT)	220 m ² (ABOUT)	9 m (ABOUT)(1-STOREY)
B3	WAREHOUSE (EXCLUDING D.G.G.)	150 m ² (ABOUT)	150 m ² (ABOUT)	9 m (ABOUT)(1-STOREY)
TOTAL		590 m ² (ABOUT)	590 m ² (ABOUT)	



FIRE SERVICE INSTALLATIONS

- (S) STAND-ALONE BATTERY TYPE FIRE DETECTOR
- (FE_{DP}) 4 KG DRY POWDER TYPE FIRE EXTINGUISHER

FS NOTES:

- 1) SUFFICIENT STAND-ALONE FIRE DETECTOR SHALL BE PROVIDED THROUGHOUT THE ENTIRE BUILDING IN ACCORDANCE WITH "STAND-ALONE FIRE DETECTOR GENERAL GUIDELINES ON PURCHASE, INSTALLATION & MAINTENANCE [SEP 2021]".
- 2) IN RELATION TO 1) ABOVE, WHERE TWO OR MORE STAND-ALONE FIRE DETECTORS ARE INSTALLED IN AN ENCLOSED STRUCTURE, ALL STAND-ALONE DETECTORS SHALL BE INTERCONNECTED (EITHER WIRED OR WIRELESSLY) SUCH THAT WHEN ONE OF THE STAND-ALONE FIRE DETECTOR IS TRIGGERED, ALL CONNECTED STAND-ALONE FIRE DETECTORS SHALL SOUND AN ALARM SIMULTANEOUSLY.
- 3) PORTABLE HAND-OPERATED APPROVED APPLIANCE SHALL BE PROVIDED AS REQUIRED BY OCCUPANCY.
- 4) ACCESS IS PROVIDED FOR EMERGENCY VEHICLE TO REACH 30m OF ALL PART OF STRUCTURES.

LEGEND

	APPLICATION SITE
	STRUCTURE (ENCLOSED)
	OPEN STORAGE AREA
	INGRESS / EGRESS
	PARKING SPACE (PC)
	LOADING / UNLOADING SPACE (CV)

PLANNING CONSULTANT



PROJECT

PROPOSED TEMPORARY OPEN STORAGE AND WAREHOUSE FOR STORAGE OF CONSTRUCTION MATERIALS AND MACHINERY AND ASSOCIATED FILLING OF LAND FOR A PERIOD OF 3 YEARS

SITE LOCATION

VARIOUS LOTS IN D.D. 103 AND ADJOINING GOVERNMENT LAND, KAM TIN, NEW TERRITORIES

SCALE

1 : 500 @ A4

DRAWN BY	MN	DATE	20.11.2025
REVISED BY		DATE	
APPROVED BY		DATE	
DWG. TITLE			
FSIs PROPOSAL			
DWG NO.	APPENDIX I	VER.	002

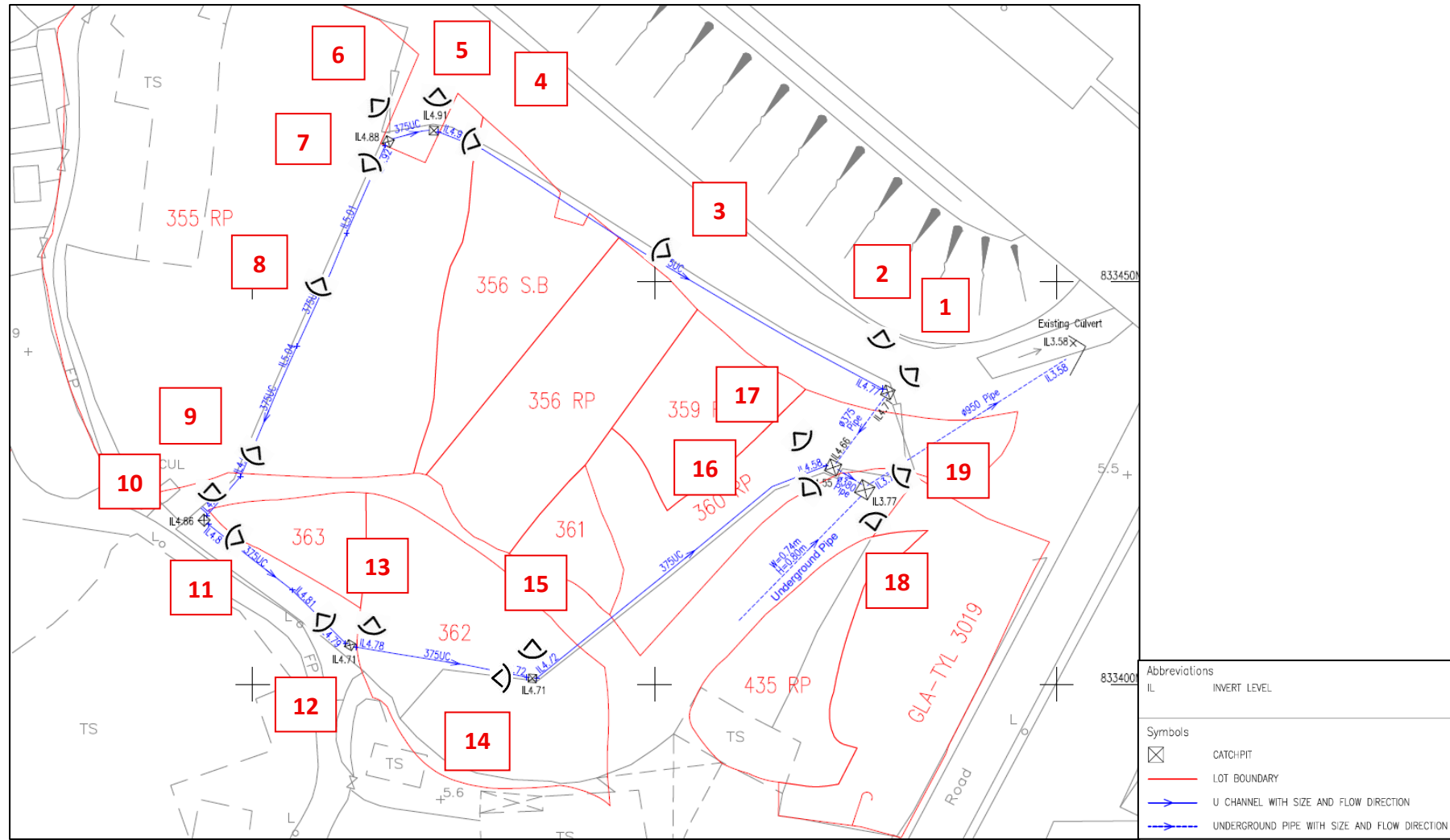
*SITE BOUNDARY FOR IDENTIFICATION PURPOSE ONLY

Appendix II

As-Built Drainage Record

Appendix II – Photographic record of the existing drainage facilities (taken on 03.11.2025)

Figure 1 – Extract of the as-built drainage plan with viewpoints of the photographic record





Viewpoint 1



Viewpoint 2



Viewpoint 3



Viewpoint 4



Viewpoint 5



Viewpoint 6



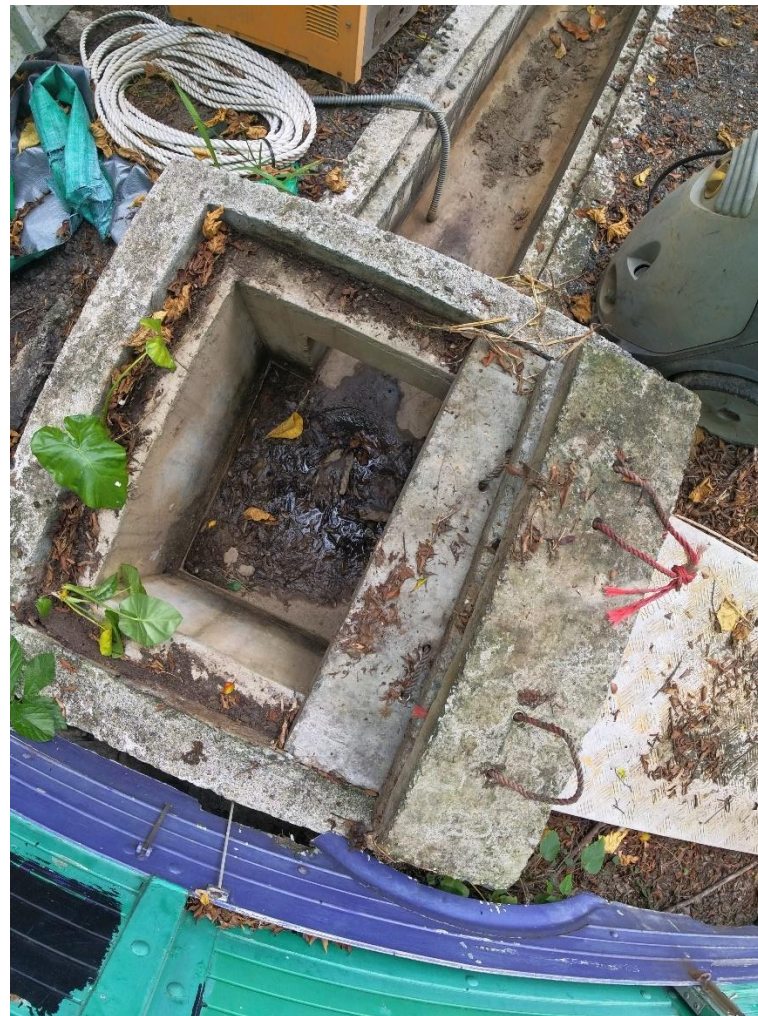
Viewpoint 7



Viewpoint 8



Viewpoint 9



Viewpoint 10



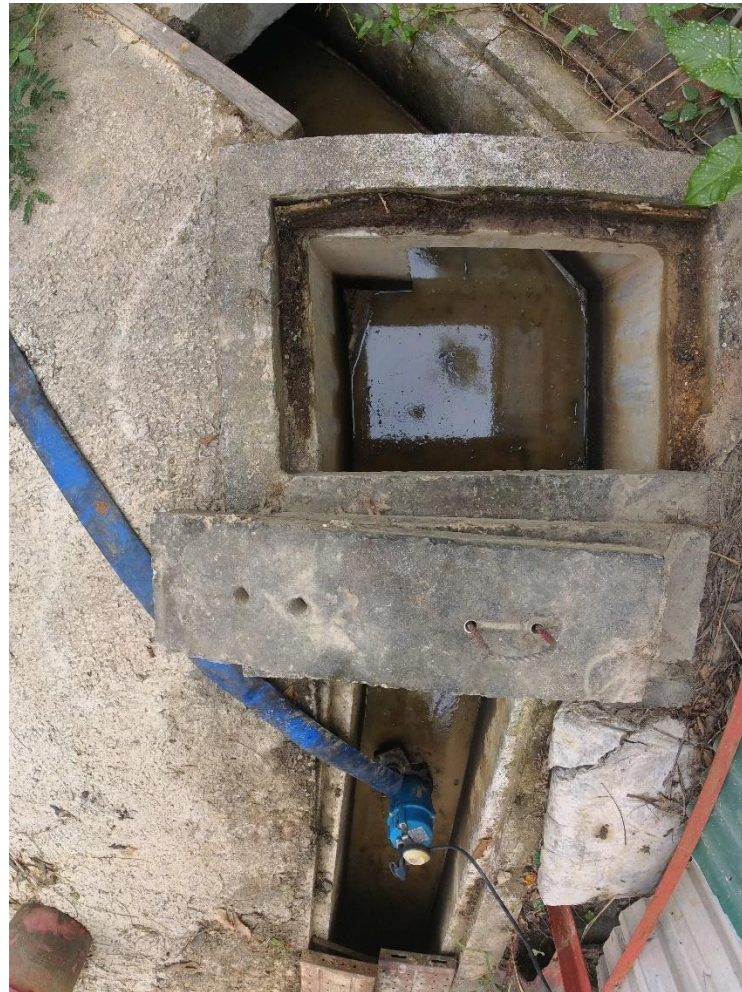
Viewpoint 11



Viewpoint 12



Viewpoint 13



Viewpoint 14



Viewpoint 15



Viewpoint 16



Viewpoint 17



Viewpoint 18



Viewpoint 19