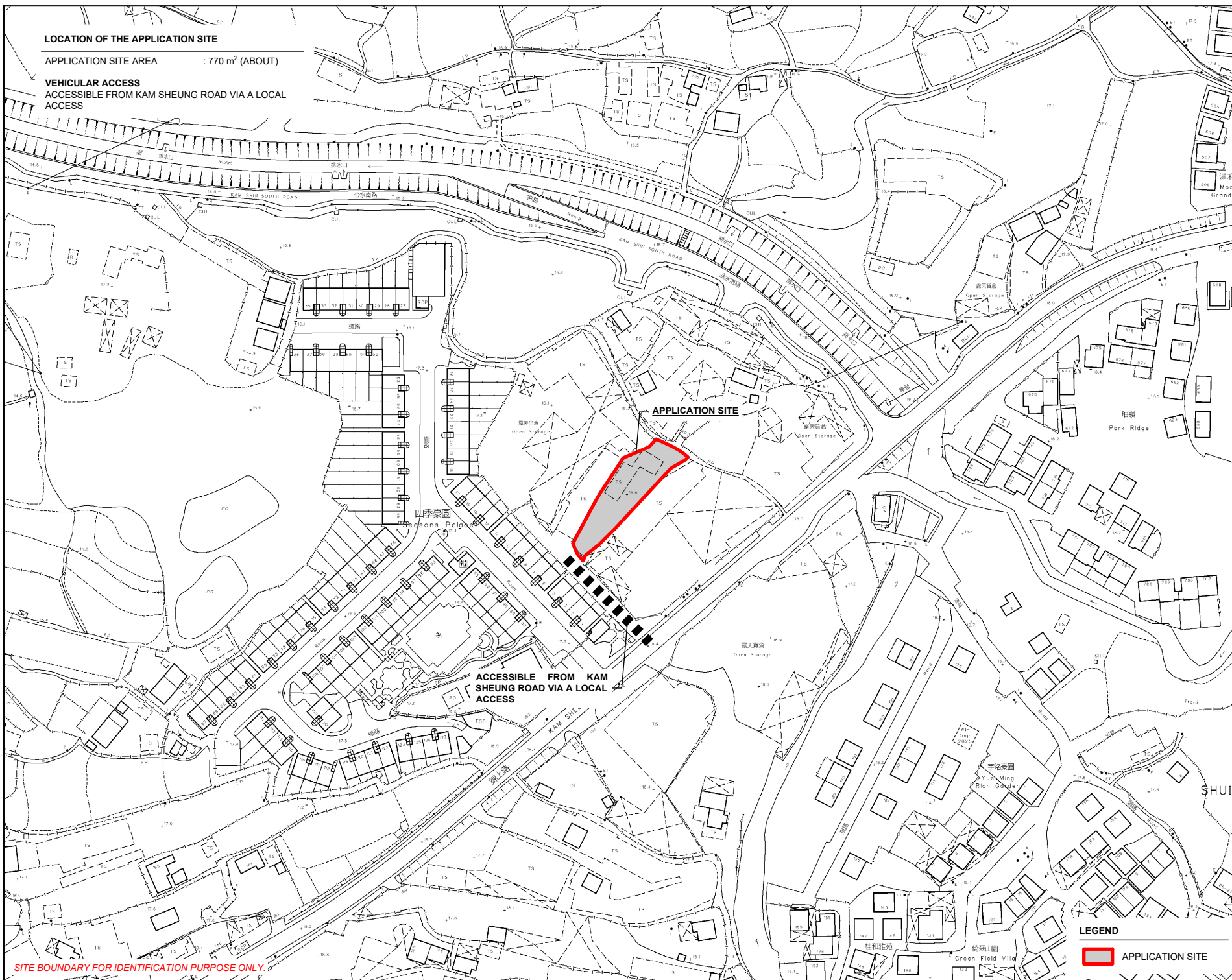
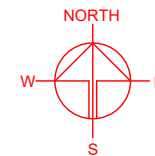


# LOCATION OF THE APPLICATION SITE

APPLICATION SITE AREA : 770 m<sup>2</sup> (ABOUT)

## VEHICULAR ACCESS

ACCESSIBLE FROM KAM SHEUNG ROAD VIA A LOCAL ACCESS



APPLICATION SITE

ACCESSIBLE FROM KAM SHEUNG ROAD VIA A LOCAL ACCESS

### LEGEND

APPLICATION SITE

SITE BOUNDARY FOR IDENTIFICATION PURPOSE ONLY.

PLANNING CONSULTANT



PROJECT

PROPOSED ANIMAL ESTABLISHMENT WITH ANCILLARY FACILITIES AND ASSOCIATED FILLING OF LAND FOR A PERIOD OF 5 YEARS

SITE LOCATION

LOT 1165 (PART) IN D.D. 106, PAT HEUNG, YUEN LONG, NEW TERRITORIES

SCALE

1:2000 @ A4

DRAWN BY

MN

DATE

29.12.2025

CHECKED BY

DATE

APPROVED BY

DATE

DWG. TITLE

LOCATION PLAN

DWG NO.

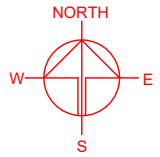
PLAN 1

VER.

001

**ZONING OF THE APPLICATION SITE**

APPLICATION SITE AREA : 770 m<sup>2</sup> (ABOUT)  
OUTLINE ZONING PLAN : APPROVED KAM TIN SOUTH OZP  
OZP PLAN NO. : S/YL-KTS/15  
ZONING OF THE SITE : "AGRICULTURE" ("AGR")



AGR 金水南路

AGR

APPLICATION SITE

AGR

R(C)1

水蔭田  
Shui Tsan Tin

SITE BOUNDARY FOR IDENTIFICATION PURPOSE ONLY.

**LEGEND**

 APPLICATION SITE

PLANNING CONSULTANT



PROJECT

PROPOSED ANIMAL ESTABLISHMENT WITH ANCILLARY FACILITIES AND ASSOCIATED FILLING OF LAND FOR A PERIOD OF 5 YEARS  
TEMPORARY BOARDING WITH

SITE LOCATION

LOT 1165 (PART) IN D.D. 106, PAT HEUNG, YUEN LONG, NEW TERRITORIES

SCALE

1 : 3000 @ A4

DRAWN BY

MN

DATE

29.12.2025

CHECKED BY

DATE

APPROVED BY

DATE

DWG. TITLE

ZONING OF THE SITE

DWG NO.

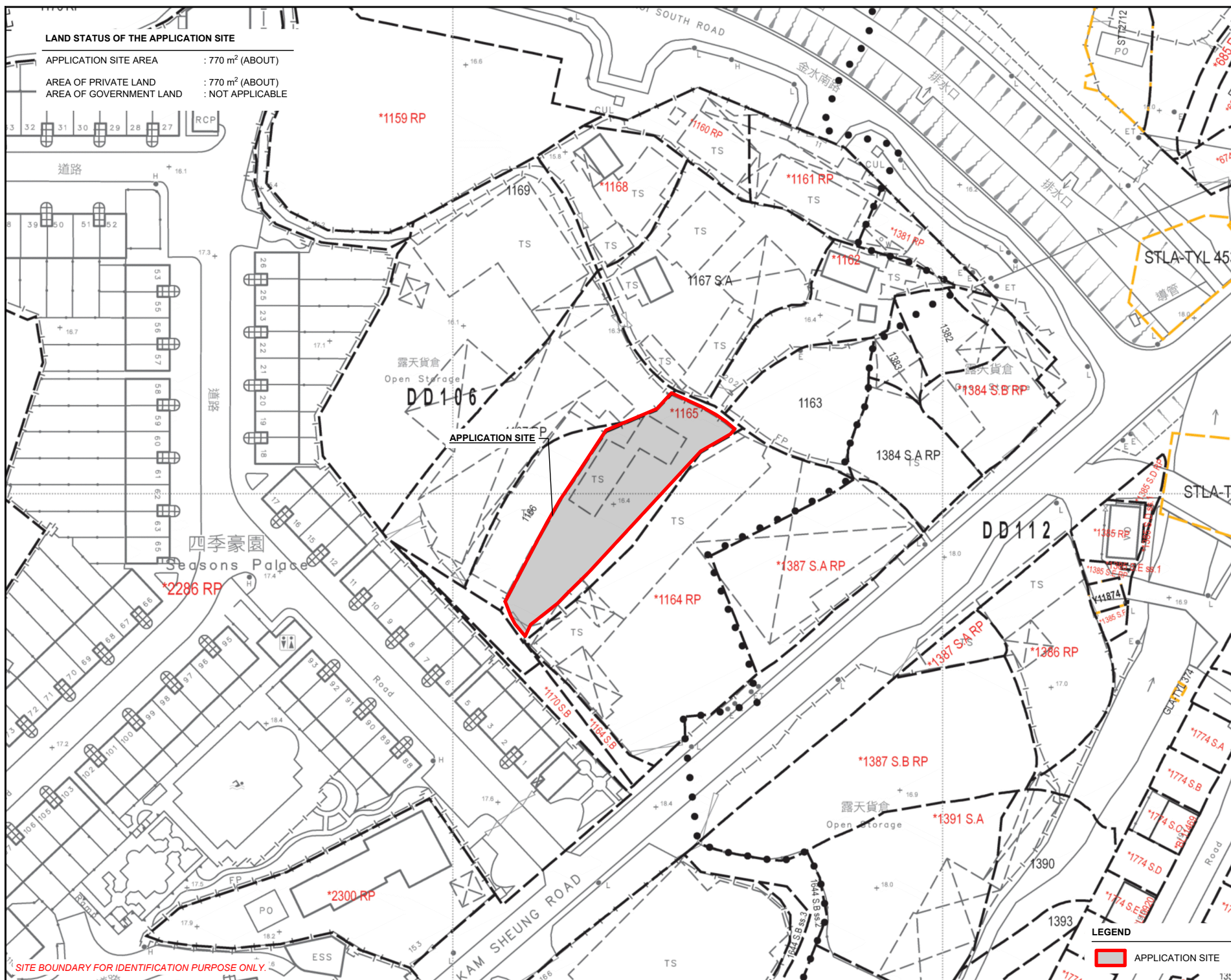
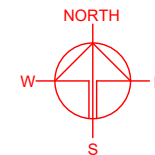
PLAN 2

VER.

001



APPLICATION SITE AREA	: 770 m <sup>2</sup> (ABOUT)
AREA OF PRIVATE LAND	: 770 m <sup>2</sup> (ABOUT)
AREA OF GOVERNMENT LAND	: NOT APPLICABLE



PLANNING CONSULTANT



PROPOSED ANIMAL ESTABLISHMENT WITH ANCILLARY FACILITIES AND ASSOCIATED FILLING OF LAND FOR A PERIOD OF 5 YEARS



**SITE LOCATION**

LOT 1165 (PART) IN D.D. 106,  
PAT HEUNG, YUEN LONG, NEW  
TERRITORIES

SCALE  
1 : 1000 @ A4

DRAWN BY	DATE
MN	29.12.2025

WIT	ESTIMATED
CHECKED BY	DATE

APPROVED BY	DATE
-------------	------

DWG. TITLE  
LAND STATUS OF THE SITE

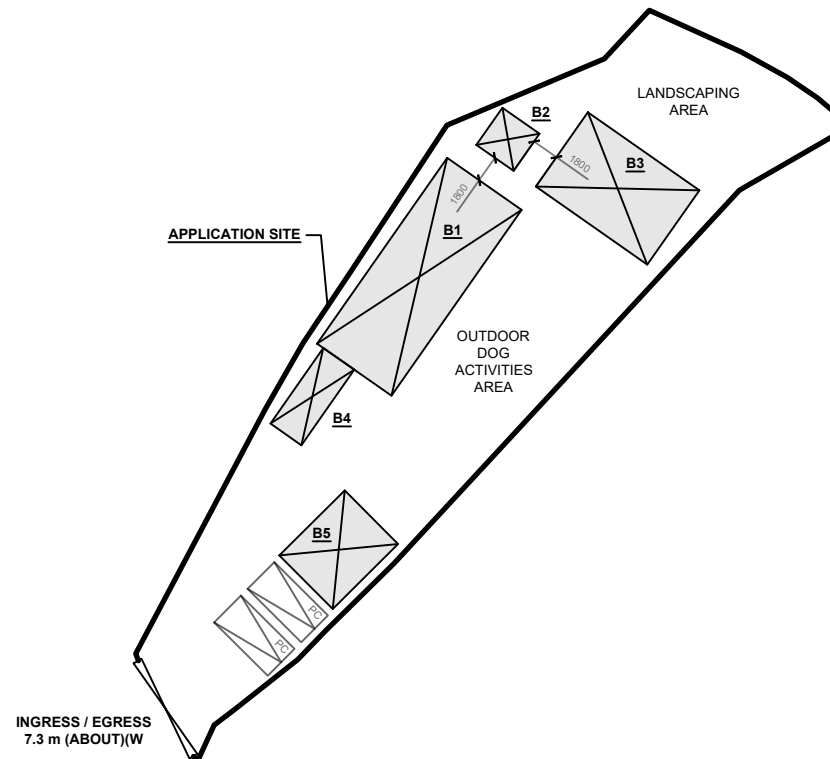
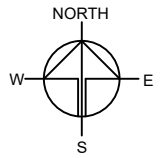
DWG NO.	VER.
PLAN 3	001

### LEGEND

 APPLICATION SITE





APPLICATION SITE AREA	: 770 m <sup>2</sup>	(ABOUT)
COVERED AREA	: 198 m <sup>2</sup>	(ABOUT)
UNCOVERED AREA	: 572 m <sup>2</sup>	(ABOUT)
PLOT RATIO	: 0.44	(ABOUT)
SITE COVERAGE	: 26 %	(ABOUT)
NO. OF STRUCTURE	: 5	
DOMESTIC GFA	: NOT APPLICABLE	
NON-DOMESTIC GFA	: 342 m <sup>2</sup>	(ABOUT)
TOTAL GFA	: 342 m <sup>2</sup>	(ABOUT)
BUILDING HEIGHT	: 3 m - 7 m	(ABOUT)
NO. OF STOREY	: 1 - 2	

STRUCTURE	USE	COVERED AREA	GROSS FLOOR AREA	BUILDING HEIGHT
B1	ANIMAL BOARDING ESTABLISHMENT AND SITE OFFICE	90 m <sup>2</sup> (ABOUT)	180 m <sup>2</sup> (ABOUT)	7 m (ABOUT)(2-STOREY)
B2	WASHROOM	9 m <sup>2</sup> (ABOUT)	9 m <sup>2</sup> (ABOUT)	3 m (ABOUT)(1-STOREY)
B3	ANIMAL BOARDING ESTABLISHMENT	54 m <sup>2</sup> (ABOUT)	108 m <sup>2</sup> (ABOUT)	7 m (ABOUT)(2-STOREY)
B4	STORAGE OF PET SUPPLIES	15 m <sup>2</sup> (ABOUT)	15 m <sup>2</sup> (ABOUT)	3 m (ABOUT)(1-STOREY)
B5	STORAGE OF PET SUPPLIES	30 m <sup>2</sup> (ABOUT)	30 m <sup>2</sup> (ABOUT)	3 m (ABOUT)(1-STOREY)
TOTAL		198 m <sup>2</sup> (ABOUT)	342 m <sup>2</sup> (ABOUT)	



NO. OF PRIVATE CAR PARKING SPACE	: 2
DIMENSION OF PARKING SPACE	: 5 m (L) X 2.5 m (W)

### LEGEND

-  APPLICATION SITE
-  STRUCTURE
-  PARKING SPACE
-  INGRESS / EGRESS

PLANNING CONSULTANT
---------------------



PROJECT

PROPOSED ANIMAL ESTABLISHMENT WITH ANCILLARY FACILITIES AND ASSOCIATED FILLING OF LAND FOR A PERIOD OF 5 YEARS

SITE LOCATION

LOT 1165 (PART) IN D.D. 106,  
PAT HEUNG, YUEN LONG, NEW  
TERRITORIES

SCALE

1 : 500 @ A4

DRAWN BY

DATE \_\_\_\_\_

MN

29.12.2025

CHECKED BY

DATE \_\_\_\_\_

100

100

APPROVED BY \_\_\_\_\_

DATE \_\_\_\_\_

© 2006 The Authors

DWG TITLE	

## LAYOUT

1000

---

001

# FILLING OF LAND AREA OF THE APPLICATION SITE

APPLICATION SITE AREA	: 770 m <sup>2</sup>	(ABOUT)
EXISTING FILLED AREA	: 645 m <sup>2</sup>	(ABOUT)
EXISTING SITE LEVEL	: +16.3 mPD - 16.4mPD	(ABOUT)
DEPTH OF LAND FILLING	: NOT MORE THAN 0.1 m	
MATERIAL OF FILLING OF LAND	: CONCRETE	
PURPOSE OF FILLING OF LAND	: SITE FORMATION OF STRUCTURE CIRCULATION AREA AND PARKING AND LOADING/UNLOADING SPACE	

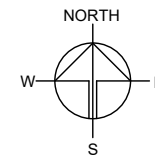
THE APPLICATION SITE HAS BEEN FILLED, NO FURTHER FILLING OF LAND WILL BE CARRIED OUT AT THE SITE DURING THE PLANNING APPROVAL PERIOD.



EXISTING SITE LEVELS OF  
THE APPLICATION SITE  
(INDICATIVE ONLY)

## LEGEND

- APPLICATION SITE
- LOCATION OF STRUCTURE
- LAND FILLING AREA
- INGRESS / EGRESS
- + 16.4 SITE LEVEL



PLANNING CONSULTANT



PROJECT

PROPOSED ANIMAL BOARDING ESTABLISHMENT WITH ANCILLARY FACILITIES AND ASSOCIATED FILLING OF LAND FOR A PERIOD OF 5 YEARS

SITE LOCATION

LOT 1165 (PART) IN D.D. 106, PAT HEUNG, YUEN LONG, NEW TERRITORIES

SCALE

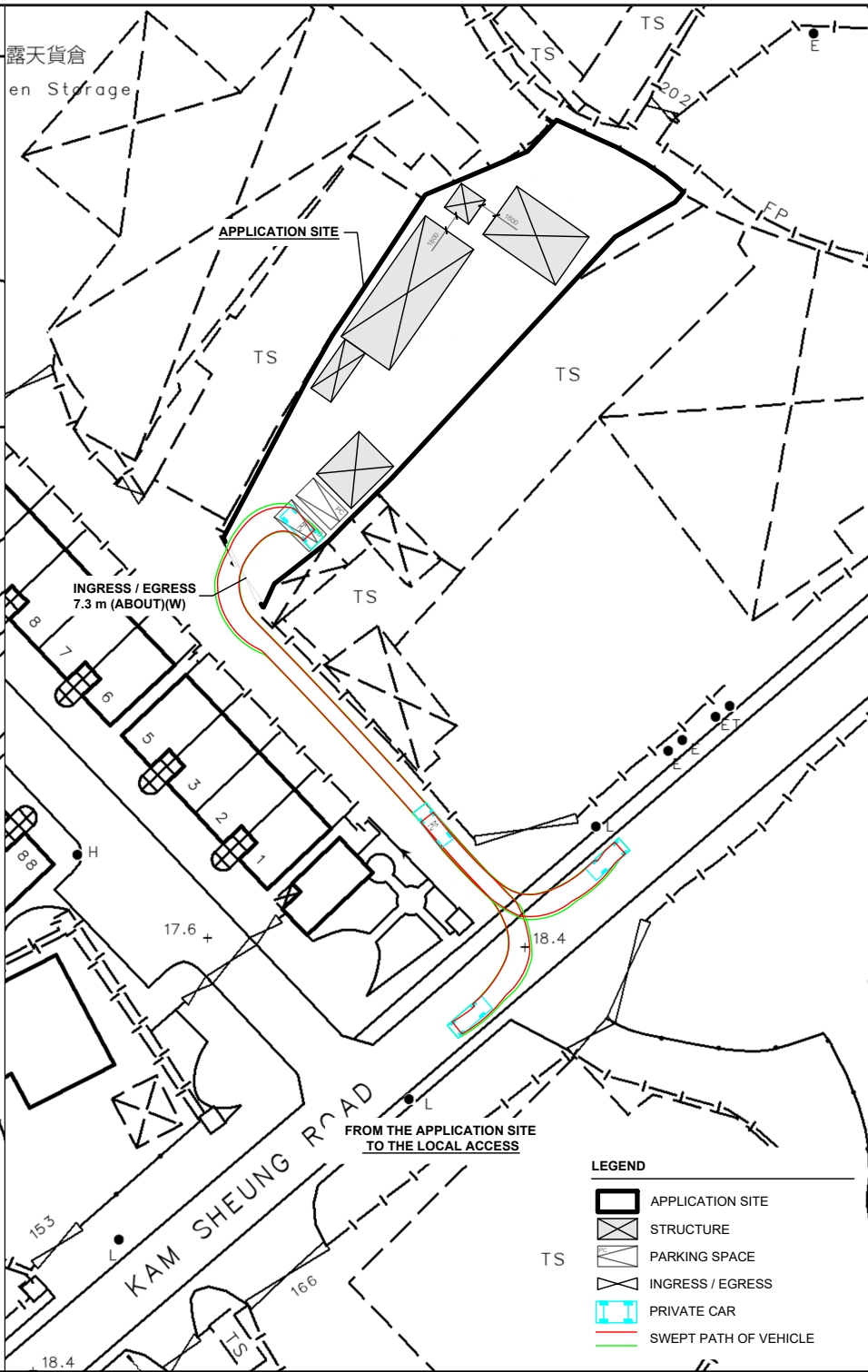
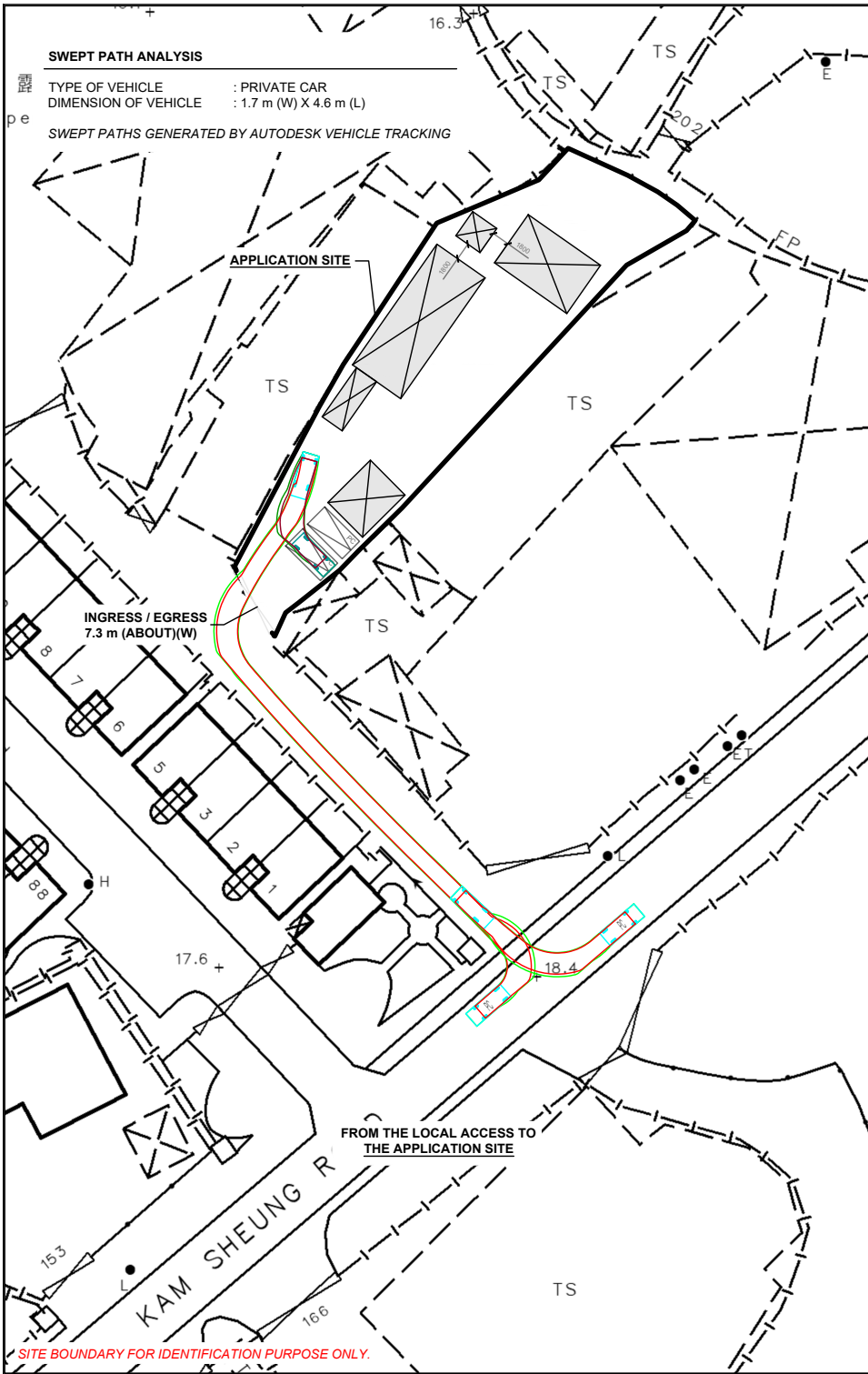
1 : 300 @ A4

DRAWN BY MN	DATE 29.12.2025
CHECKED BY	DATE
APPROVED BY	DATE

DWG. TITLE  
FILLING OF LAND AREA

DWG NO. PLAN 5	VER. 001
-------------------	-------------

SITE BOUNDARY FOR IDENTIFICATION PURPOSE ONLY.



**NORTH**

W E

S

PLANNING CONSULTANT

**R-RICHES**  
IPLANNING LIMITED

PROJECT

PROPOSED ANIMAL ESTABLISHMENT WITH ANCILLARY FACILITIES AND ASSOCIATED FILLING OF LAND FOR A PERIOD OF 5 YEARS

TEMPORARY BOARDING WITH

SITE LOCATION

LOT 1165 (PART) IN D.D. 106, PAT HEUNG, YUEN LONG, NEW TERRITORIES

SCALE

1 : 700 @ A4

DRAWN BY

MN

CHECKED BY

APPROVED BY

DATE

29.12.2025

DWG. TITLE

SWEPT PATH ANALYSIS (LGV)

DWG NO.

PLAN 6

VER.

001