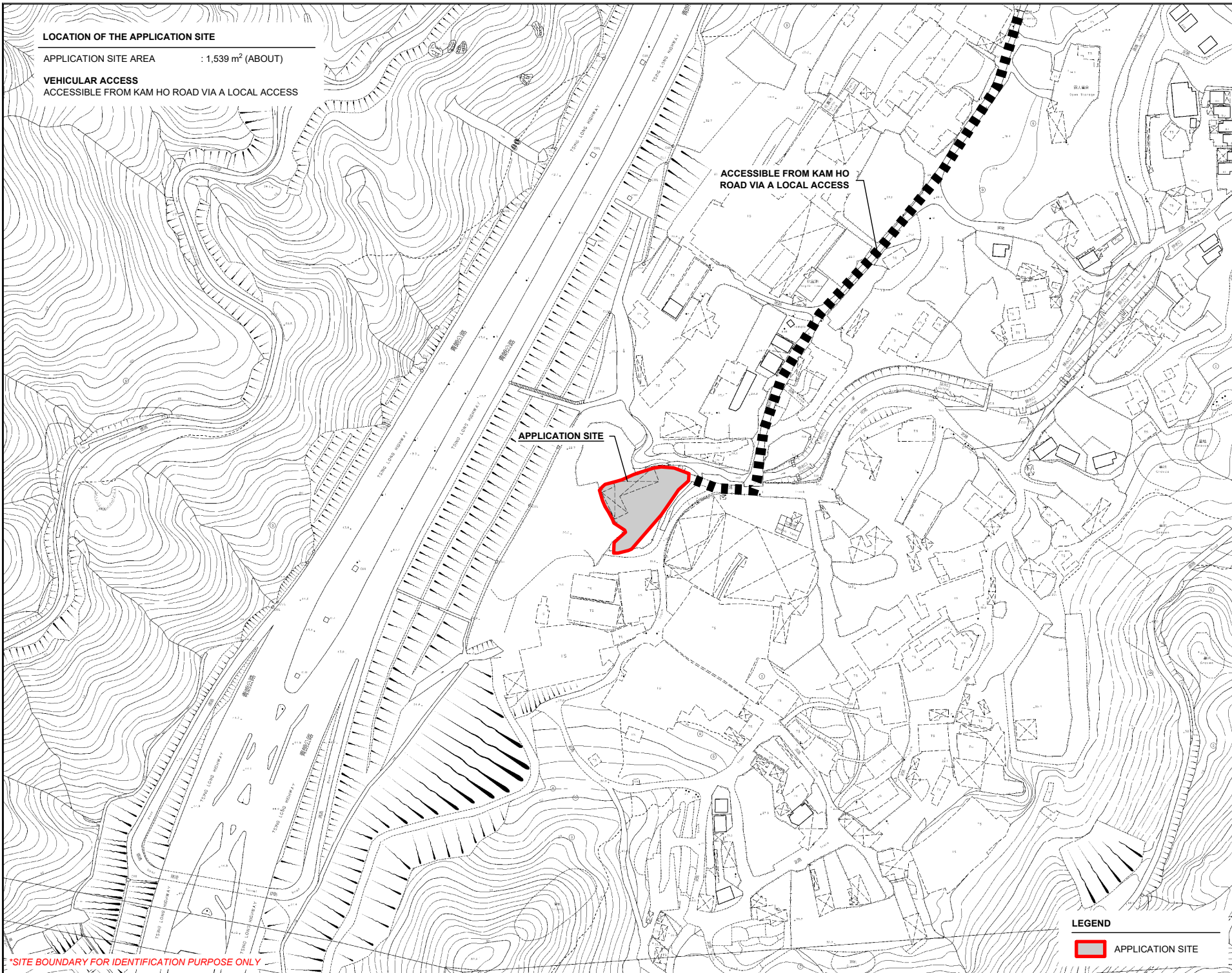
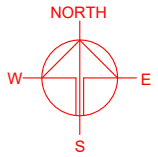


LOCATION OF THE APPLICATION SITE

APPLICATION SITE AREA : 1,539 m² (ABOUT)

VEHICULAR ACCESS
ACCESSIBLE FROM KAM HO ROAD VIA A LOCAL ACCESS



APPLICATION SITE

ACCESSIBLE FROM KAM HO ROAD VIA A LOCAL ACCESS

PLANNING CONSULTANT



PROJECT
TEMPORARY WAREHOUSE (EXCLUDING DANGEROUS GOODS GODOWN) WITH ANCILLARY FACILITIES AND ASSOCIATED FILLING OF LAND FOR A PERIOD OF 3 YEARS

SITE LOCATION
VARIOUS LOTS IN D.D. 113, KAM TIN, YUEN LONG, NEW TERRITORIES

SCALE
1 : 3000 @ A4

DRAWN BY: MN DATE: 2.3.2026

REVISED BY: DATE:

APPROVED BY: DATE:

DWG. TITLE
LOCATION PLAN

DWG NO.: PLAN 1 VER.: 001

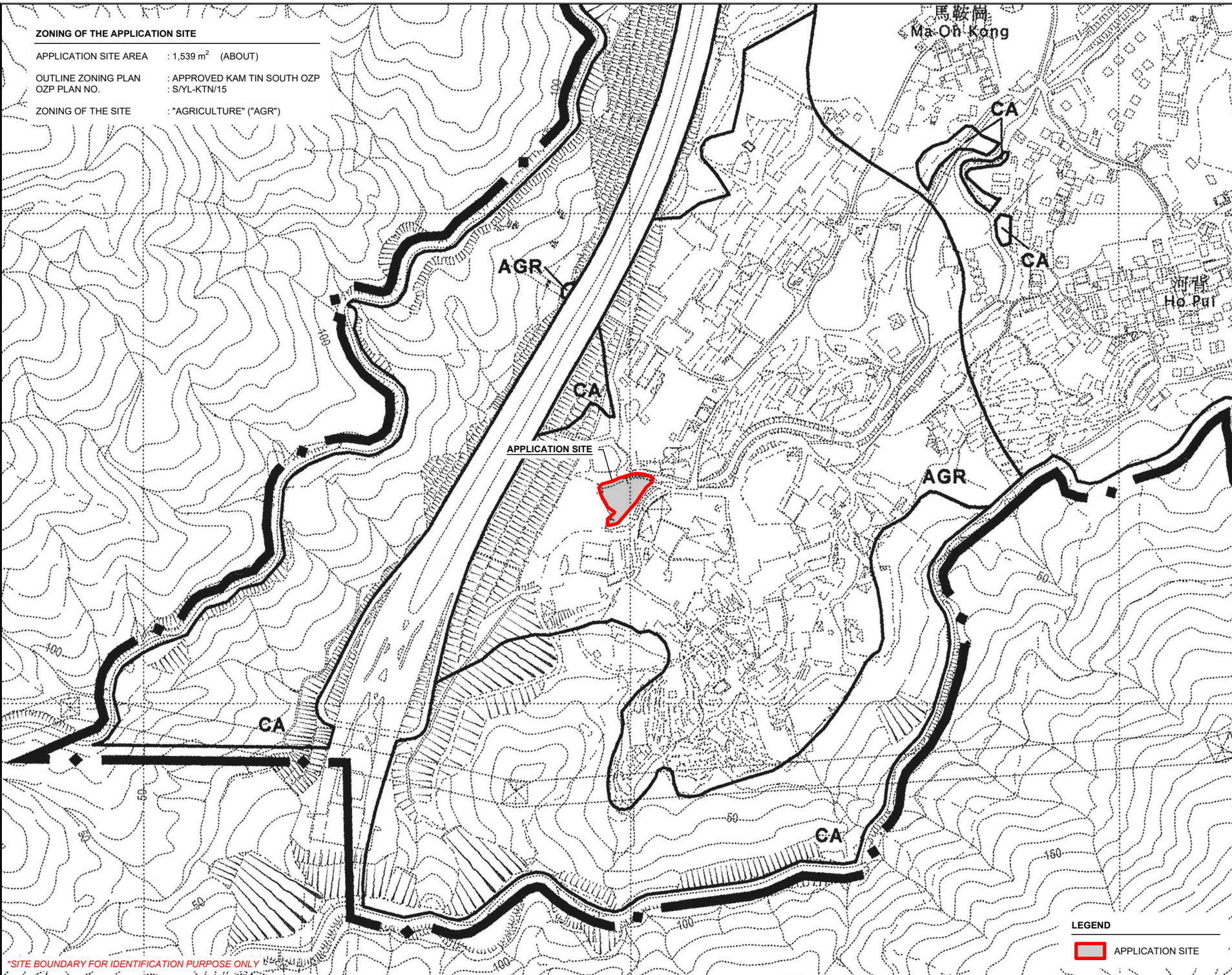
LEGEND

 APPLICATION SITE

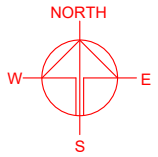
*SITE BOUNDARY FOR IDENTIFICATION PURPOSE ONLY

ZONING OF THE APPLICATION SITE

APPLICATION SITE AREA : 1,539 m² (ABOUT)
 OUTLINE ZONING PLAN : APPROVED KAM TIN SOUTH OZP
 OZP PLAN NO. : S/YL-KTN/15
 ZONING OF THE SITE : "AGRICULTURE" ("AGR")



*SITE BOUNDARY FOR IDENTIFICATION PURPOSE ONLY



PLANNING CONSULTANT



PROJECT
 TEMPORARY WAREHOUSE (EXCLUDING DANGEROUS GOODS GODOWN) WITH ANCILLARY FACILITIES AND ASSOCIATED FILLING OF LAND FOR A PERIOD OF 3 YEARS

SITE LOCATION
 VARIOUS LOTS IN D.D. 113, KAM TIN, YUEN LONG, NEW TERRITORIES

SCALE
 1 : 5000 @ A4

DRAWN BY MN	DATE 2.3.2026
----------------	------------------

REVISED BY	DATE
------------	------

APPROVED BY	DATE
-------------	------

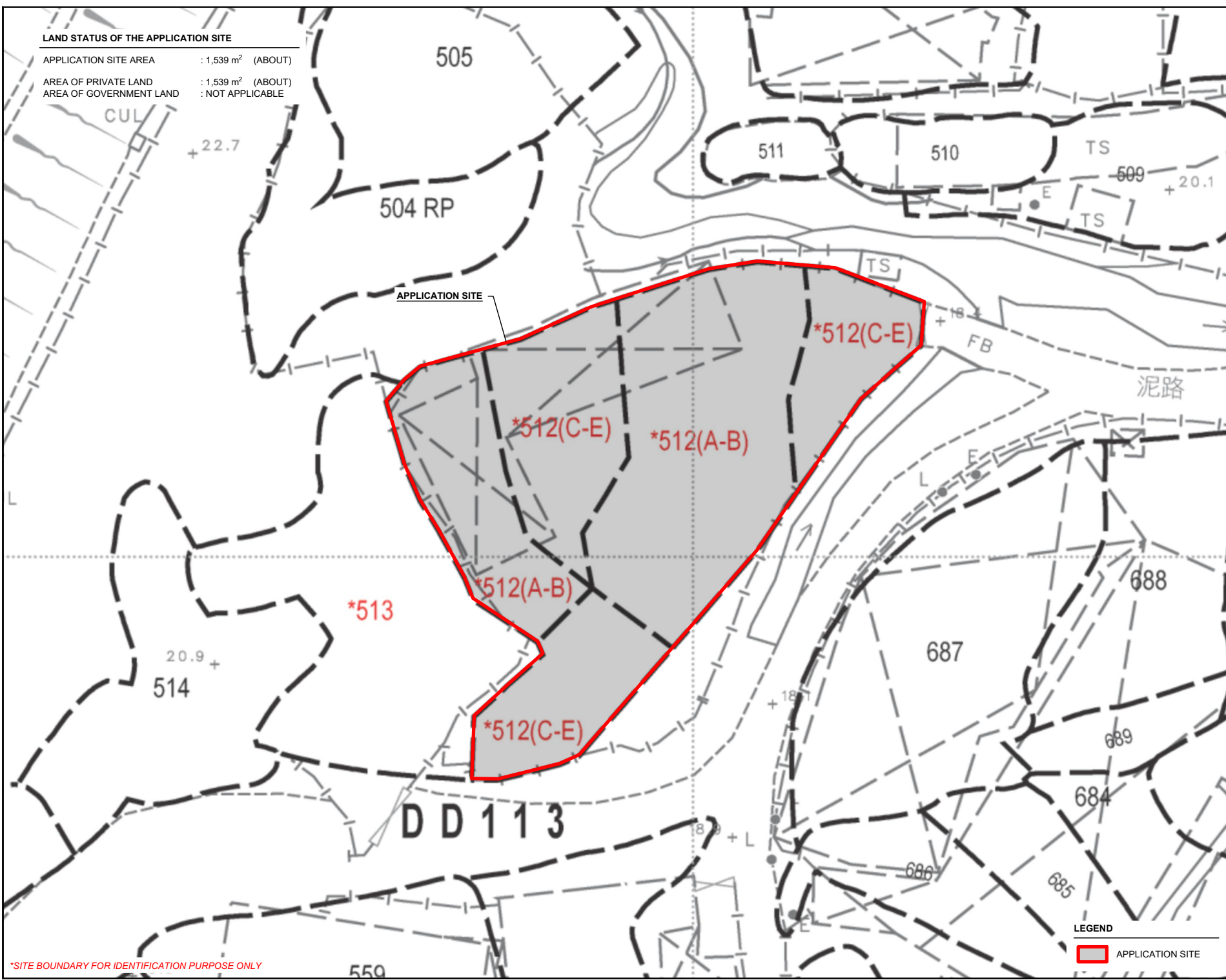
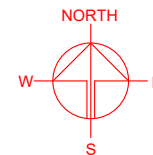
DWG. TITLE
 ZONING OF THE SITE

DWG. NO. PLAN 2	VER. 001
--------------------	-------------

LEGEND
 APPLICATION SITE

LAND STATUS OF THE APPLICATION SITE

APPLICATION SITE AREA : 1,539 m² (ABOUT)
 AREA OF PRIVATE LAND : 1,539 m² (ABOUT)
 AREA OF GOVERNMENT LAND : NOT APPLICABLE



*SITE BOUNDARY FOR IDENTIFICATION PURPOSE ONLY

LEGEND

APPLICATION SITE

PLANNING CONSULTANT

PROJECT

TEMPORARY WAREHOUSE (EXCLUDING DANGEROUS GOODS GODOWN) WITH ANCILLARY FACILITIES AND ASSOCIATED FILLING OF LAND FOR A PERIOD OF 3 YEARS

SITE LOCATION

VARIOUS LOTS IN D.D. 113, KAM TIN, YUEN LONG, NEW TERRITORIES

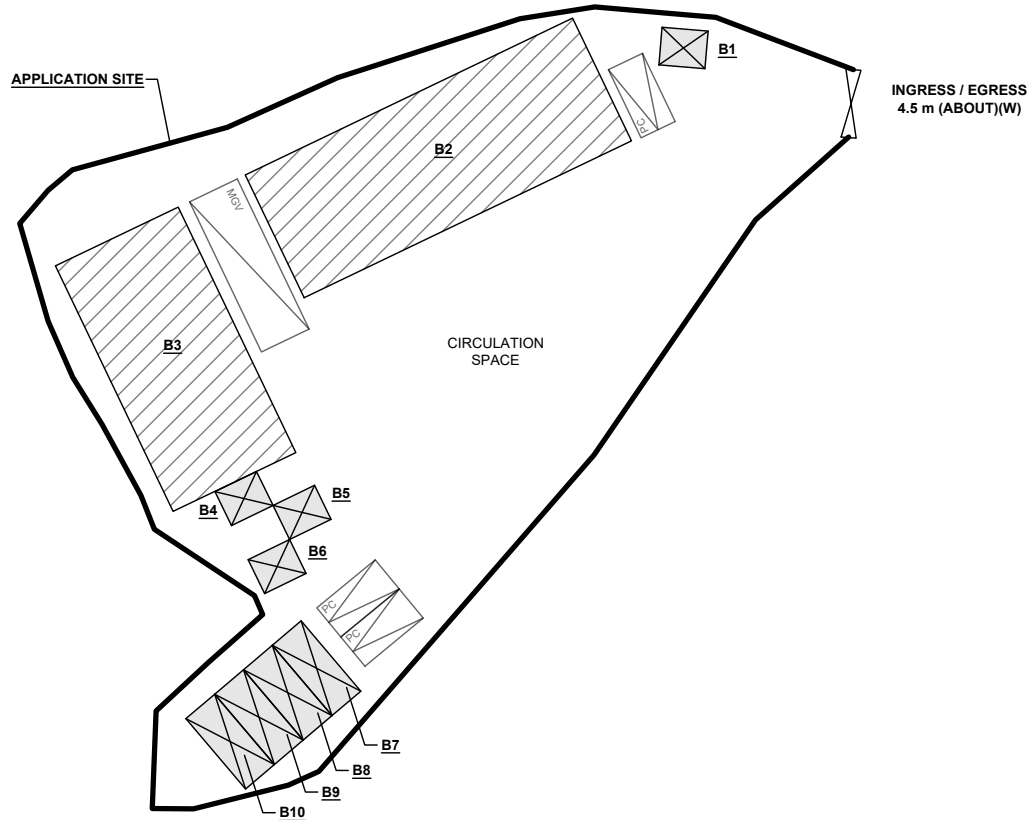
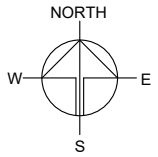
SCALE	
1 : 500 @ A4	
DRAWN BY	DATE
MN	2.3.2026
REVISED BY	DATE
APPROVED BY	DATE
DWG. TITLE	
LAND STATUS OF THE SITE	
DWG NO.	VER.
PLAN 3	001

DEVELOPMENT PARAMETERS

APPLICATION SITE AREA	: 1,539 m ²	(ABOUT)
COVERED AREA	: 470 m ²	(ABOUT)
UNCOVERED AREA	: 1,069 m ²	(ABOUT)
PLOT RATIO	: 0.31	(ABOUT)
SITE COVERAGE	: 31 %	(ABOUT)
NO. OF STRUCTURE	: 10	
DOMESTIC GFA	: NOT APPLICABLE	
NON-DOMESTIC GFA	: 470 m ²	(ABOUT)
TOTAL GFA	: 470 m ²	(ABOUT)
BUILDING HEIGHT	: 3 m - 8 m	(ABOUT)
NO. OF STOREY	: 1	

STRUCTURE	USE	COVERED AREA	GROSS FLOOR AREA	BUILDING HEIGHT
B1*	GUARDROOM	8 m ² (ABOUT)	8 m ² (ABOUT)	3 m (ABOUT)(1-STOREY)
B2	WAREHOUSE (EXCLUDING D.G.G.)	216 m ² (ABOUT)	216 m ² (ABOUT)	8 m (ABOUT)(1-STOREY)
B3	WAREHOUSE (EXCLUDING D.G.G.)	162 m ² (ABOUT)	162 m ² (ABOUT)	8 m (ABOUT)(1-STOREY)
B4*	SITE OFFICE	8 m ² (ABOUT)	8 m ² (ABOUT)	3 m (ABOUT)(1-STOREY)
B5*	SITE OFFICE	8 m ² (ABOUT)	8 m ² (ABOUT)	3 m (ABOUT)(1-STOREY)
B6*	SITE OFFICE	8 m ² (ABOUT)	8 m ² (ABOUT)	3 m (ABOUT)(1-STOREY)
B7*	STORAGE OF GOODS	15 m ² (ABOUT)	15 m ² (ABOUT)	3 m (ABOUT)(1-STOREY)
B8*	STORAGE OF GOODS	15 m ² (ABOUT)	15 m ² (ABOUT)	3 m (ABOUT)(1-STOREY)
B9*	STORAGE OF GOODS	15 m ² (ABOUT)	15 m ² (ABOUT)	3 m (ABOUT)(1-STOREY)
B10*	STORAGE OF GOODS	15 m ² (ABOUT)	15 m ² (ABOUT)	3 m (ABOUT)(1-STOREY)
TOTAL		470 m² (ABOUT)	470 m² (ABOUT)	

D.G.G. - DANGEROUS GOODS GODOWN
 * STRUCTURES B1, B4 TO B10 ARE CONTAINER CONVERTED STRUCTURES



PARKING AND LOADING / UNLOADING PROVISIONS

NO. OF PRIVATE CAR PARKING SPACE	: 3
DIMENSION OF PARKING SPACE	: 5 m (L) x 2.5 m (W)
NO. OF L/UL SPACE FOR MEDIUM GOODS VEHICLE	: 1
DIMENSION OF L/UL SPACE	: 11 m (L) x 3.5 m (W)

*SITE BOUNDARY FOR IDENTIFICATION PURPOSE ONLY

LEGEND

	APPLICATION SITE
	STRUCTURE (ENCLOSED)
	STRUCTURE (4-SIDE OPENED)
	PARKING SPACE (PC)
	LOADING / UNLOADING SPACE (MGV)
	INGRESS / EGRESS

PLANNING CONSULTANT



PROJECT

TEMPORARY WAREHOUSE (EXCLUDING DANGEROUS GOODS GODOWN) WITH ANCILLARY FACILITIES AND ASSOCIATED FILLING OF LAND FOR A PERIOD OF 3 YEARS

SITE LOCATION

VARIOUS LOTS IN D.D. 113, KAM TIN, YUEN LONG, NEW TERRITORIES

SCALE

1 : 500 @ A4

DRAWN BY	DATE
MN	16.3.2026

REVISED BY	DATE

APPROVED BY	DATE

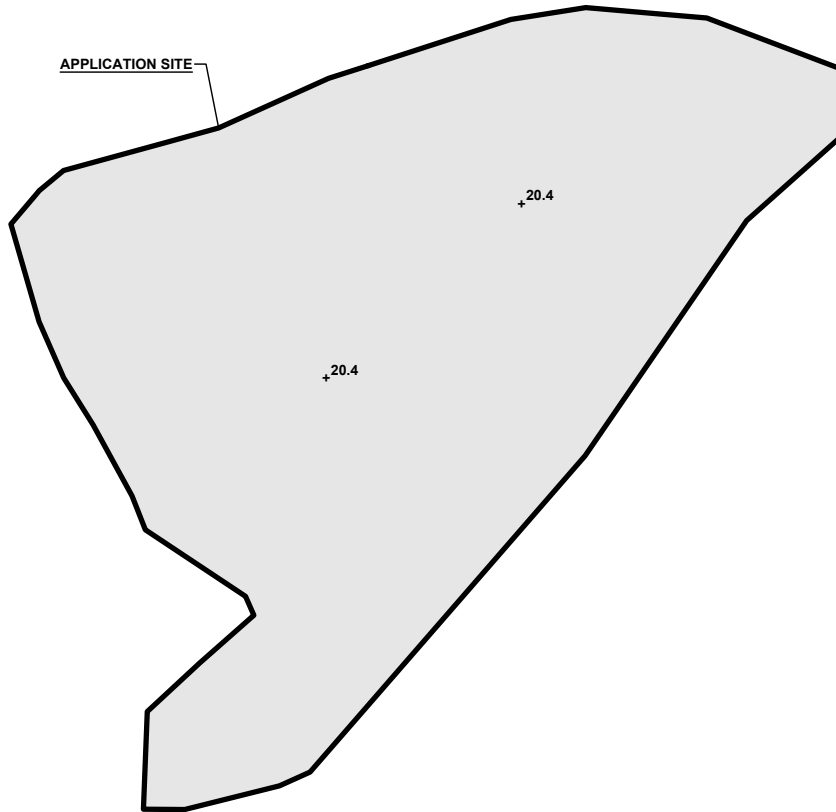
DWG. TITLE
 LAYOUT PLAN

DWG NO.	VER.
PLAN 4	001

FILLING OF LAND AT THE APPLICATION SITE

APPLICATION SITE AREA	: 1,539 m ²	(ABOUT)
COVERED BY STRUCTURE	: 470 m ²	(ABOUT)
EXISTING HARD-PAVED AREA	: 1,539 m ²	(ABOUT)
DEPTH OF LAND FILLING	: NOT MORE THAN 0.2 m	
EXISTING SITE LEVELS	: +20.4 mPD (ABOUT)	
MATERIAL OF LAND FILLING	: CONCRETE	
USE	: SITE FORMATION OF STRUCTURES, AND CIRCULATION SPACE	

THE APPLICATION SITE HAS BEEN HARD-PAVED. NO FURTHER FILLING OF LAND (CONCRETE) WILL BE REQUIRED FOR THE PROPOSED DEVELOPMENT.

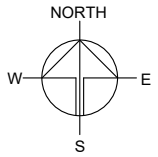


SITE LEVELS ARE FOR REFERENCE ONLY.

*SITE BOUNDARY FOR IDENTIFICATION PURPOSE ONLY

LEGEND

- APPLICATION SITE
- EXISTING HARD-PAVED AREA
- +3.4** EXISTING SITE LEVEL



PLANNING CONSULTANT



PROJECT

TEMPORARY WAREHOUSE (EXCLUDING DANGEROUS GOODS GODOWN) WITH ANCILLARY FACILITIES AND ASSOCIATED FILLING OF LAND FOR A PERIOD OF 3 YEARS

SITE LOCATION

VARIOUS LOTS IN D.D. 113, KAM TIN, YUEN LONG, NEW TERRITORIES

SCALE

1 : 500 @ A4

DRAWN BY	DATE
MN	2.3.2026

REVISED BY	DATE

APPROVED BY	DATE

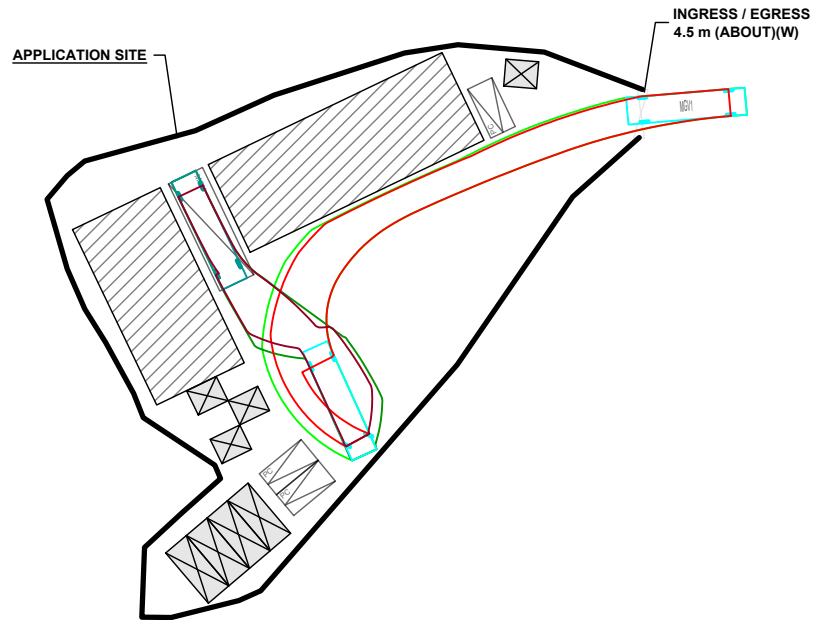
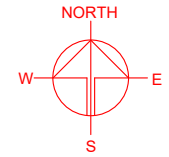
DWG. TITLE
FILLING OF LAND

DWG NO.	VER.
PLAN 5	001

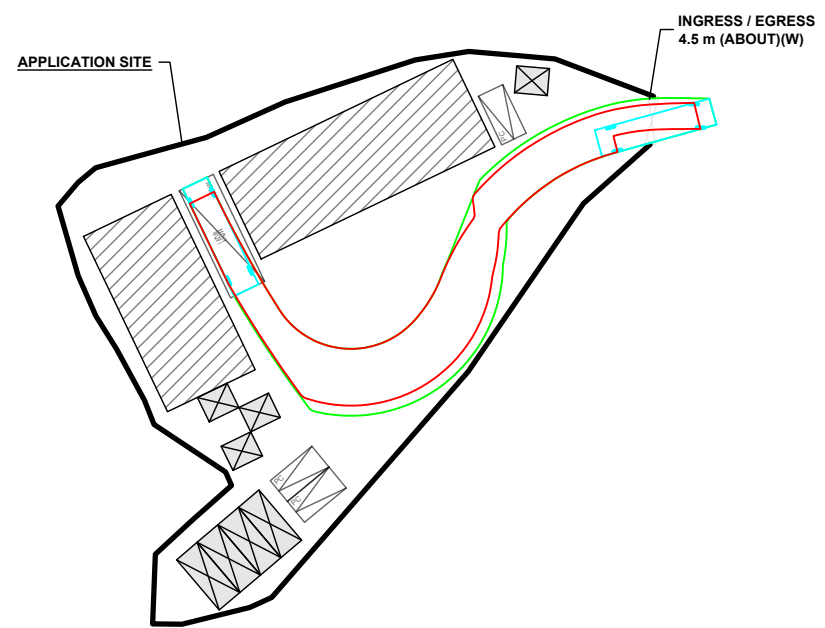
SWEPT PATH ANALYSIS

TYPE OF VEHICLE : MEDIUM GOODS VEHICLE
 DIMENSION OF VEHICLE : 2.5 m (W) X 11 m (L)

SWEPT PATHS GENERATED BY AUTODESK VEHICLE TRACKING



FROM THE LOCAL ACCESS TO THE APPLICATION SITE



FROM THE APPLICATION SITE TO THE LOCAL ACCESS

PARKING AND LOADING / UNLOADING PROVISIONS

NO. OF PRIVATE CAR PARKING SPACE : 3
 DIMENSION OF PARKING SPACE : 5 m (L) x 2.5 m (W)

NO. OF L/U/L SPACE FOR MEIDUM GOODS VEHICLE : 1
 DIMENSION OF L/U/L SPACE : 11 m (L) x 3.5 m (W)

**SITE BOUNDARY FOR IDENTIFICATION PURPOSE ONLY*

LEGEND

- APPLICATION SITE
- STRUCTURE (ENCLOSED)
- STRUCTURE (4-SIDE OPENED)
- PARKING SPACE (PC)
- LOADING / UNLOADING SPACE (MGV)
- INGRESS / EGRESS
- MEDIUM GOODS VEHICLE
- SWEPT PATH OF VEHICLE

PLANNING CONSULTANT



PROJECT

TEMPORARY WAREHOUSE (EXCLUDING DANGEROUS GOODS GODOWN) WITH ANCILLARY FACILITIES AND ASSOCIATED FILLING OF LAND FOR A PERIOD OF 3 YEARS

SITE LOCATION

VARIOUS LOTS IN D.D. 113, KAM TIN, YUEN LONG, NEW TERRITORIES

SCALE

1 : 700 @ A4

DRAWN BY

MN

DATE

16.3.2026

CHECKED BY

DATE

APPROVED BY

DATE

DWG. TITLE

SWEPT PATH ANALYSIS

DWG NO.

PLAN 6

VER.

001