

Project 項目名稱:

Proposed Temporary Open Storage of Construction Machinery, Construction Material, Vehicle and Vehicle Parts for a Period of 3 Years at Lots 447RP (Part) & 448 (Part) in D.D. 106 and Adjoining Government Land, Kam Sheung Road, Kam Tin, Yuen Long, N.T.

Drawing Title 圖目:

Application Site

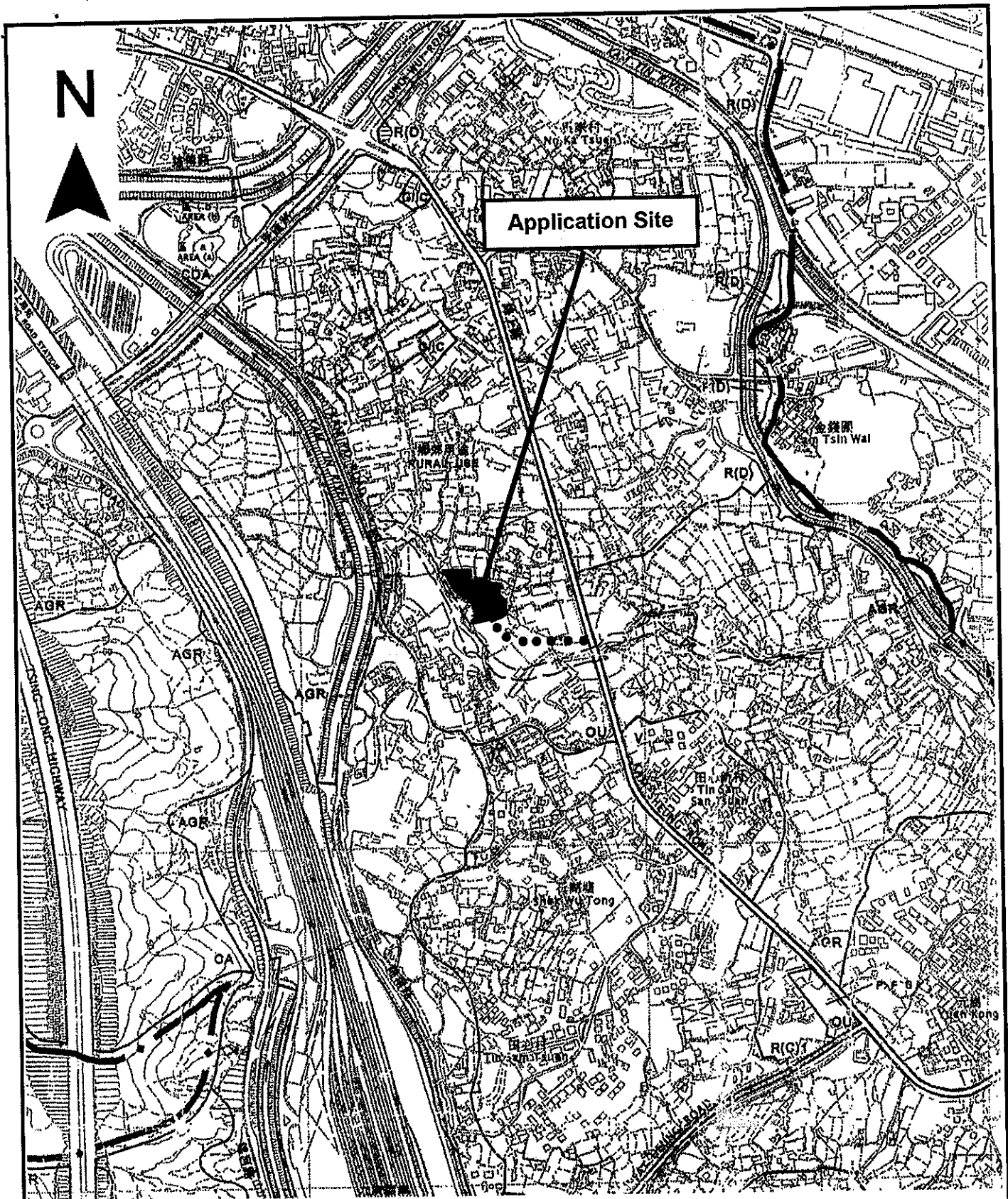
Drawing No. 圖號:

Figure 1

Remarks 備註:

Scale 比例:

1:1000



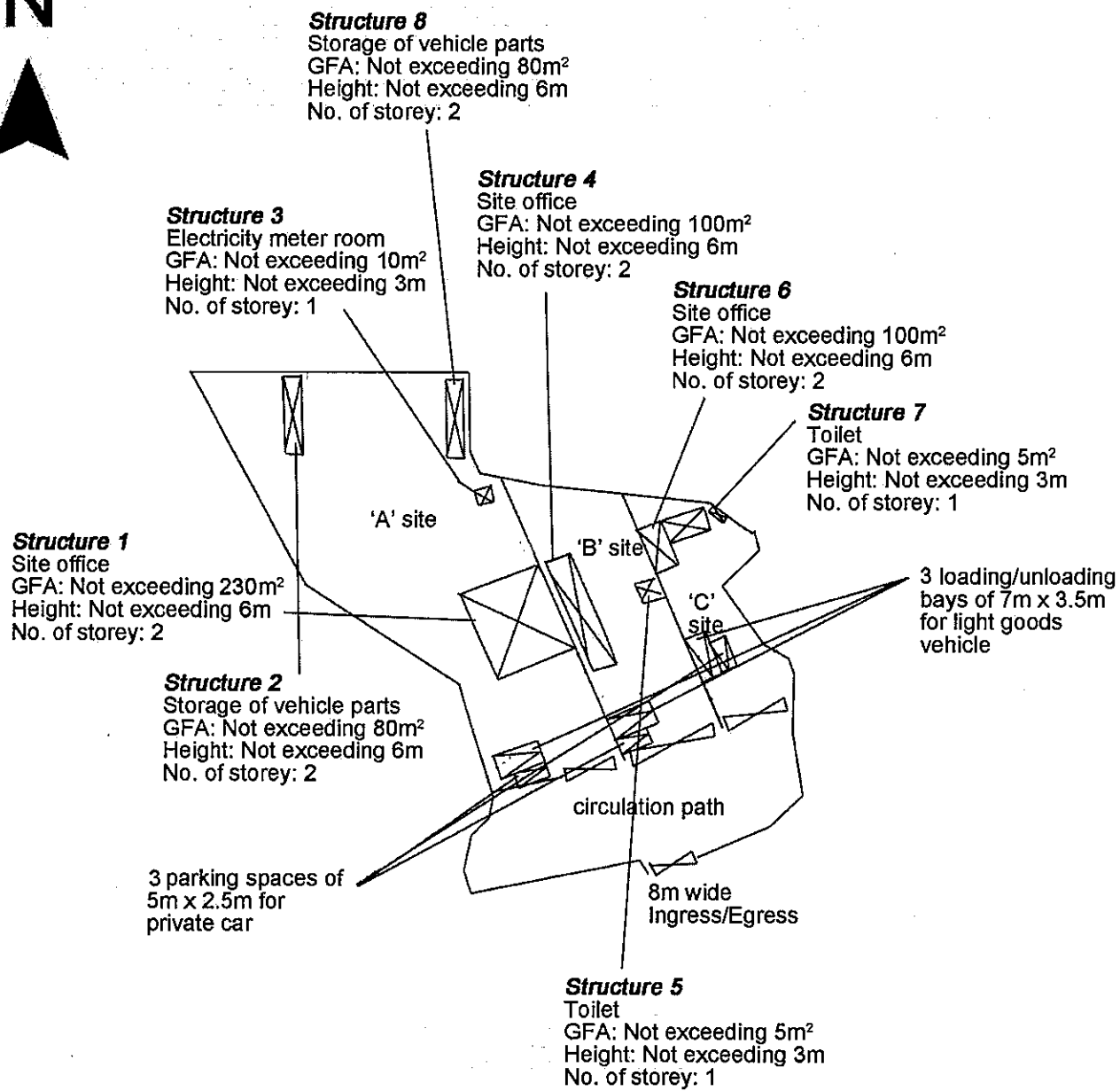
Project 項目名稱:
 Proposed Temporary Open Storage of Construction Machinery, Construction Material, Vehicle and Vehicle Parts for a Period of 3 Years at Lots 447RP (Part) & 448 (Part) in D.D. 106 and Adjoining Government Land, Kam Sheung Road, Kam Tin, Yuen Long, N.T.

Drawing Title 圖目:
 Location Plan

Drawing No. 圖號:
 Figure 2

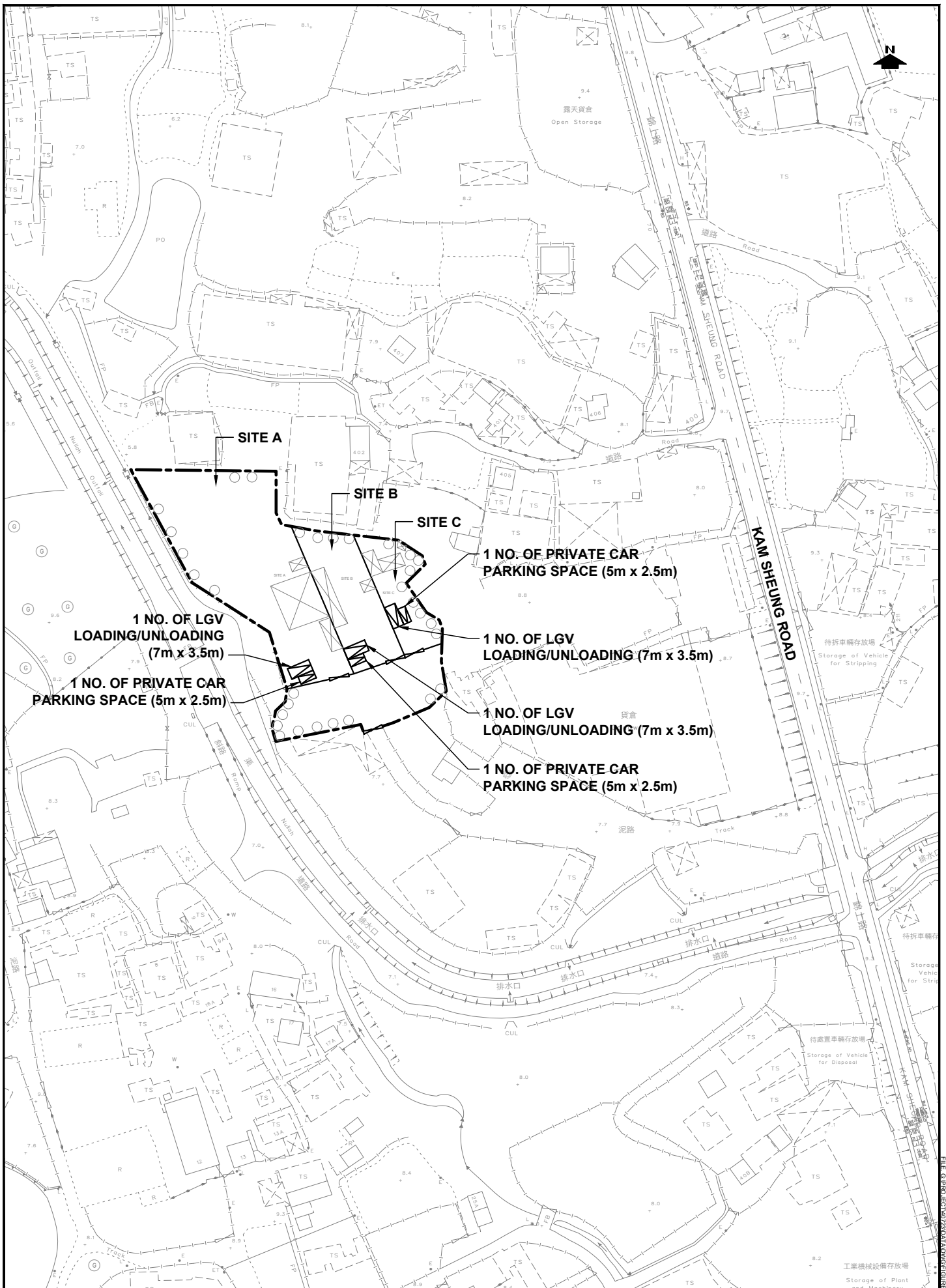
Remarks 備註:
 ●●● Vehicular access leading from Kam Sheung Road

Scale 比例:
 1:7500



Usage
 'A' site - Open storage of vehicle and vehicle parts
 'B' site - Open storage of construction machinery and construction material
 'C' site - Open storage of construction machinery and construction material

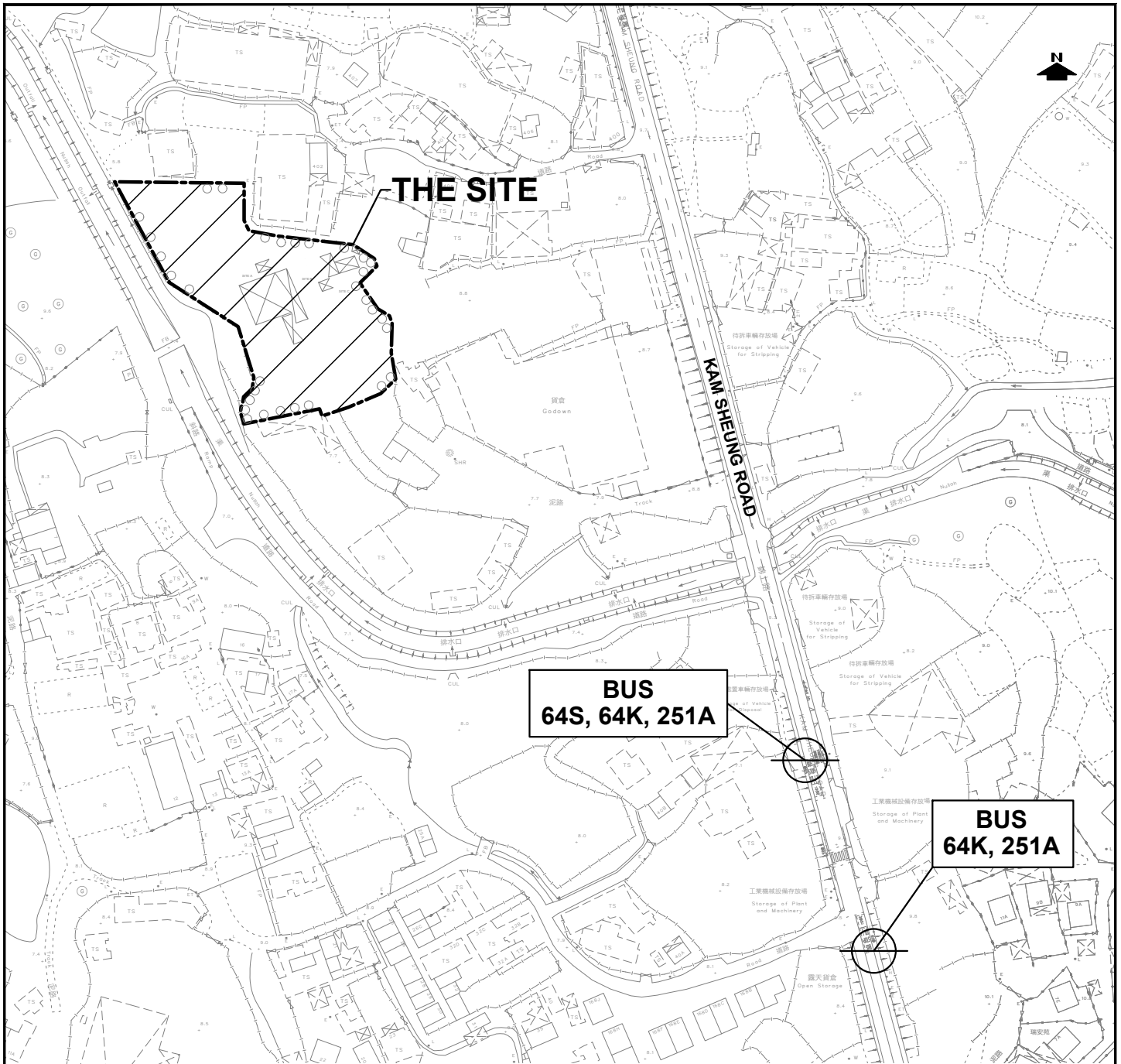
Project 項目名稱: Proposed Temporary Open Storage of Construction Machinery, Construction Material, Vehicle and Vehicle Parts for a Period of 3 Years at Lots 447RP (Part) & 448 (Part) in D.D. 106 and Adjoining Government Land, Kam Sheung Road, Kam Tin, Yuen Long, N.T.	Drawing Title 圖目: Proposed Layout Plan Drawing No. 圖號: Figure 3	Remarks 備註: Scale 比例: 1:1000
---	--	--



PROJECT NO.	40723
DESIGNED	SLN
DRAWN	CLL
CHECKED	SLN
DATE	JAN 2021
SCALE	1:1500

PROJECT TITLE	PROPOSED TEMPORARY OPEN STORAGE OF CONSTRUCTION MACHINERY, CONSTRUCTION MATERIAL, VEHICLE AND VEHICLE PARTS FOR A PERIOD OF 3 YEARS AT LOTS 447 RP (PART) AND 448 (PART) IN D.D. 106 AND ADJOINING GOVERNMENT LAND, KAM SHEUNG ROAD, KAM TIN, YUEN LONG
DRAWING TITLE	PROPOSED SITE LAYOUT

DRAWING NO.	FIGURE R1	REV.	.
LLA 顧問有限公司		Consultancy Limited	



Existing Road-Based Public Transport Services

Route No.	Terminal Points	Frequency
Franchised Bus		
64K	Yuen Long (West) – Tai Po Market Station	6 – 15 mins
64S	Sheung Tsuen Playground – Kam Sheung Road Station	Special Services at 7:10, 7:25, 7:35 and 7:50
251A	Kam Sheung Road Station – Sheung Tsuen (Circular)	15 – 30 mins
Scheduled Minibus (GMB)		
71	Yuen Long (Yuen Long Tai Hang Street) – Shek Wu Tong (Ho Pui)	15 mins
72	Yuen Long (Yuen Long Tai Hang Street) – Lui Kung Tin	10 mins
78	Pat Heung Road (near Tai Lam Bus-Bus Interchange) – Lok Ma Chau (San Tin) Public Transport Interchange	15 – 25 mins
78A	Pat Heung Road (near Tai Lam Bus-Bus Interchange) – Kam Sheung Road Station	15 – 17 mins

PROJECT NO.
40723

DESIGNED
SLN

DRAWN
CLL

CHECKED
SLN

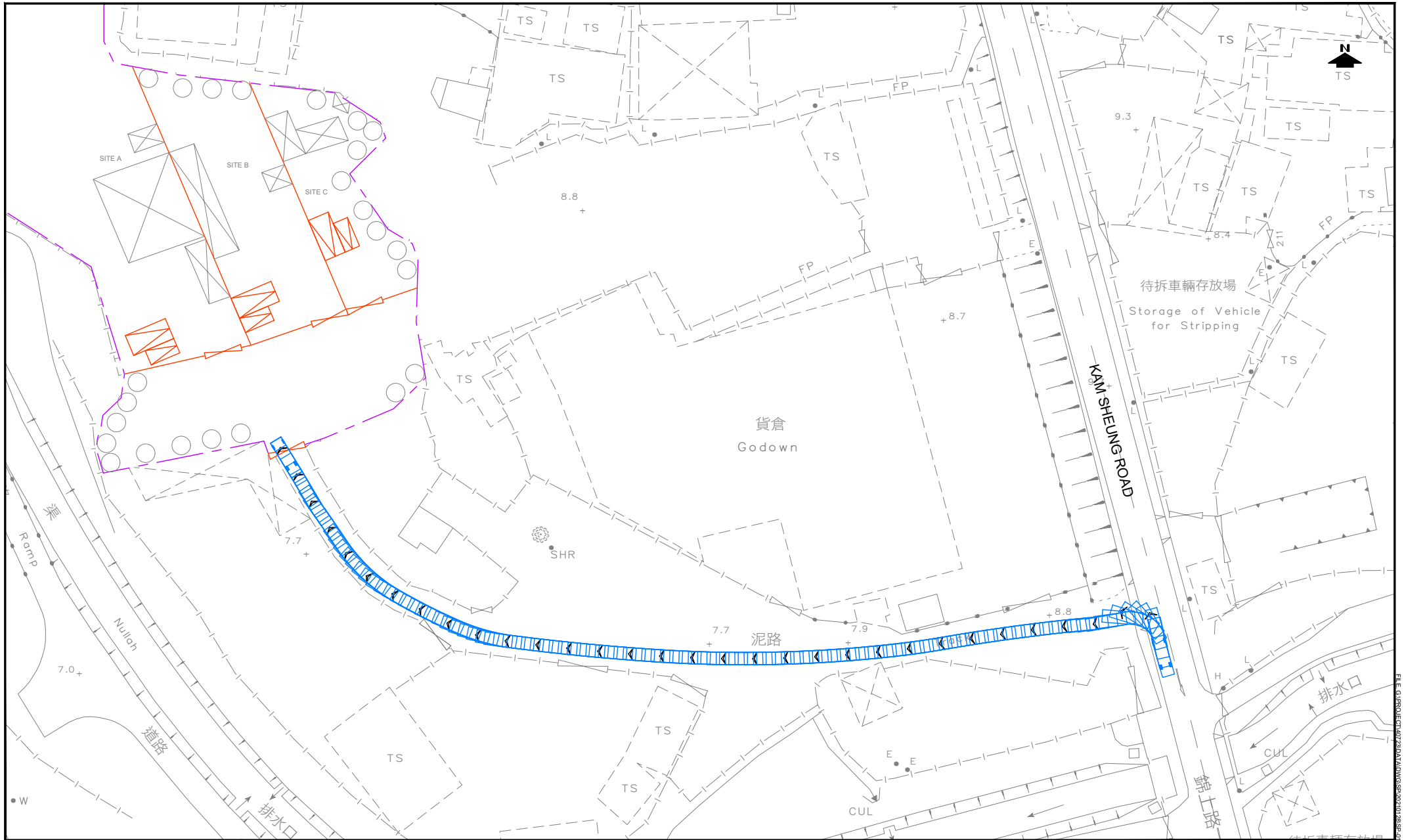
PROJECT TITLE
PROPOSED TEMPORARY OPEN STORAGE OF CONSTRUCTION MACHINERY, CONSTRUCTION MATERIAL, VEHICLE AND VEHICLE PARTS FOR A PERIOD OF 3 YEARS AT LOTS 447 RP (PART) AND 448 (PART) IN D.D. 106 AND ADJOINING GOVERNMENT LAND, KAM SHEUNG ROAD, KAM TIN, YUEN LONG

DRAWING NO.
FIGURE R2

REV.
.

PUBLIC TRANSPORT SERVICES IN THE VICINITY

LLA 顧問有限公司
Consultancy Limited



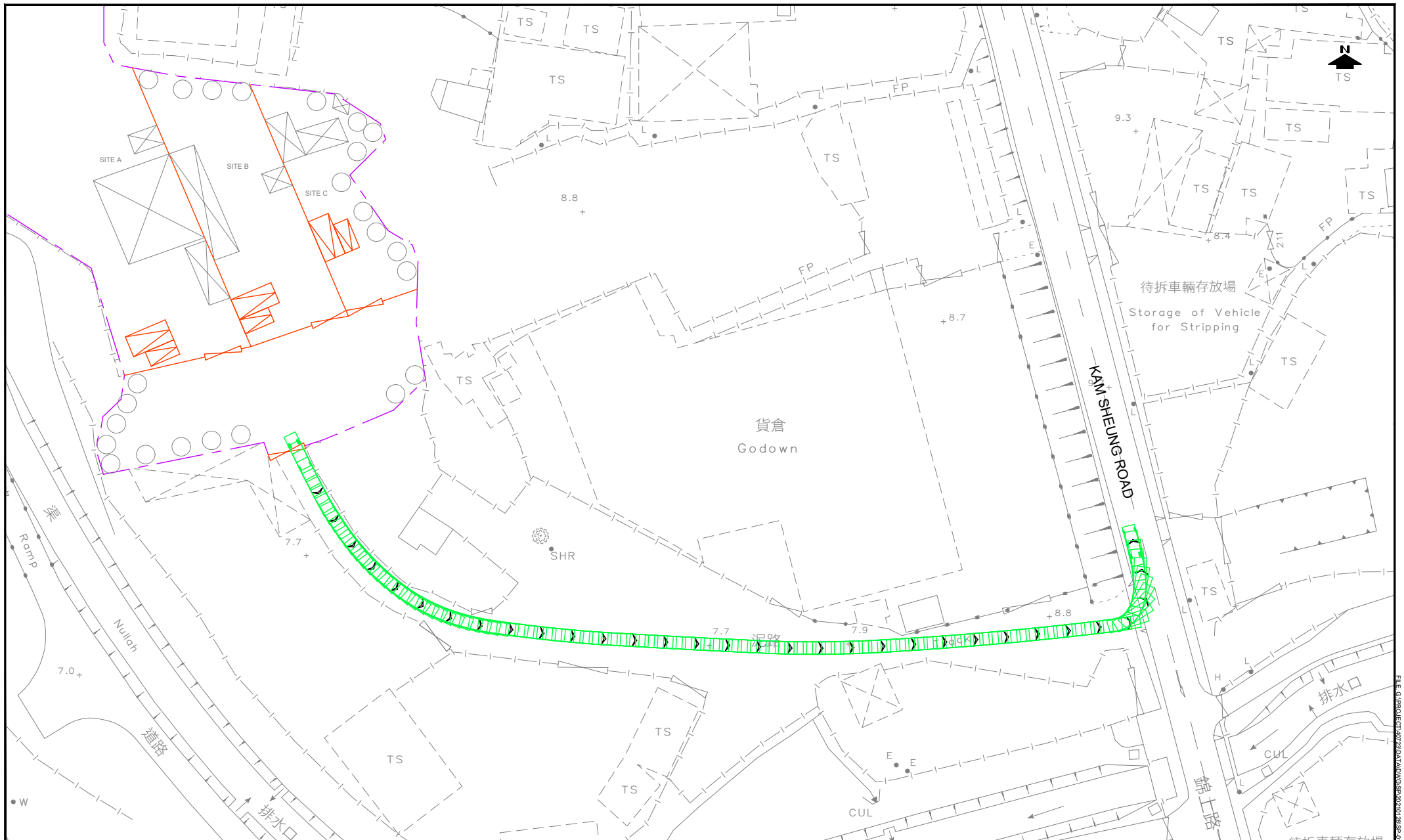
PROJECT NO.	40723
DESIGNED	SLN
DRAWN	CLL
CHECKED	SLN
DATE	JAN 2021
SCALE	1:800

PROJECT TITLE **PROPOSED TEMPORARY OPEN STORAGE OF CONSTRUCTION MACHINERY, CONSTRUCTION MATERIAL, VEHICLE AND VEHICLE PARTS FOR A PERIOD OF 3 YEARS AT LOTS 447 RP (PART) AND 448 (PART) IN D.D. 106 AND ADJOINING GOVERNMENT LAND, KAM SHEUNG ROAD, KAM TIN, YUEN LONG**

DRAWING TITLE	SWEPT PATH ANALYSIS - LGV (TO/FROM KAM SHEUNG ROAD) (IN)
---------------	---

DRAWING NO.	SP-01	REV.	.
-------------	--------------	------	---

LLA 顧問有限公司
Consultancy Limited



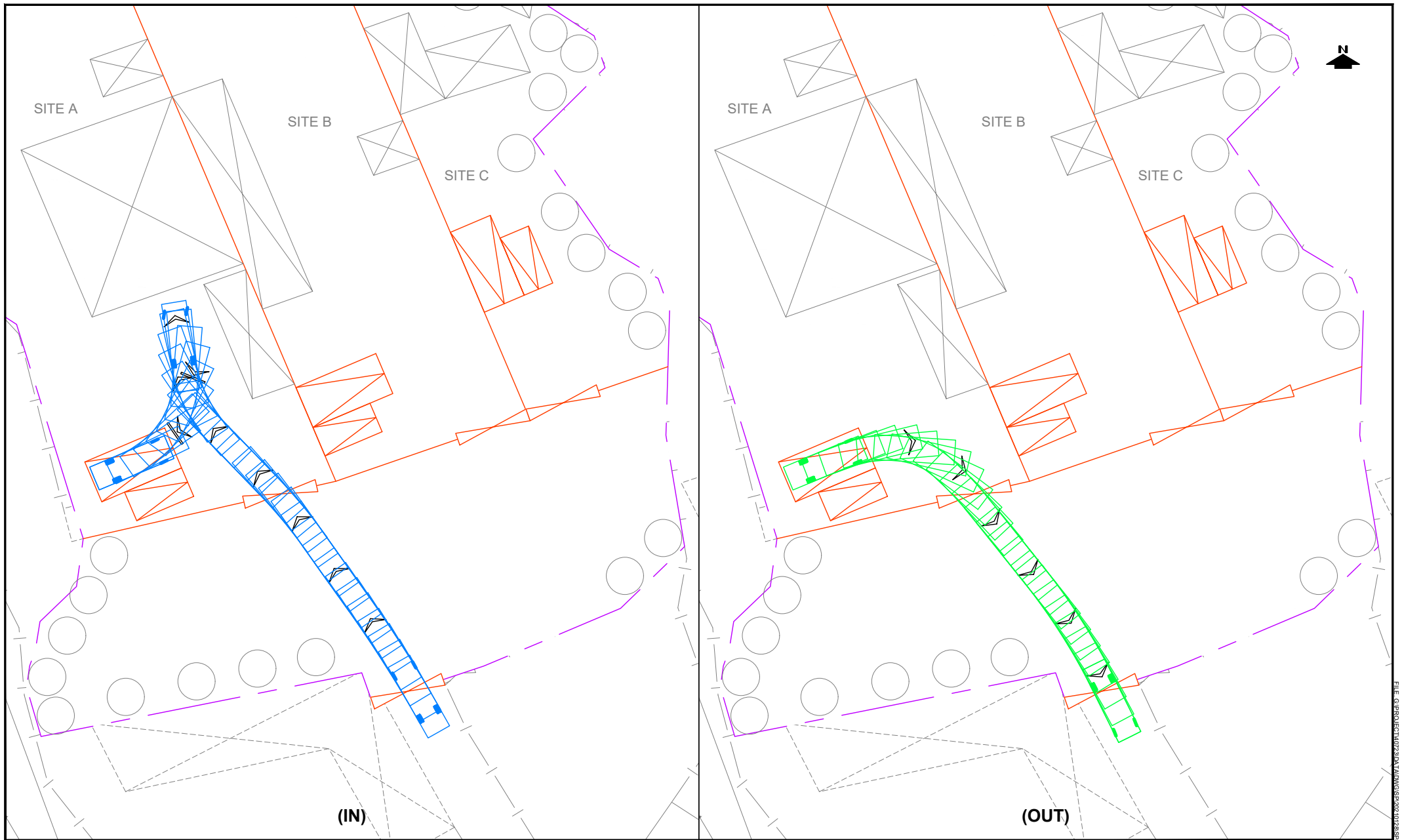
PROJECT NO.	40723
DESIGNED	SLN
DRAWN	CLL
CHECKED	SLN
DATE	JAN 2021
SCALE	1:800

PROJECT TITLE **PROPOSED TEMPORARY OPEN STORAGE OF CONSTRUCTION MACHINERY, CONSTRUCTION MATERIAL, VEHICLE AND VEHICLE PARTS FOR A PERIOD OF 3 YEARS AT LOTS 447 RP (PART) AND 448 (PART) IN D.D. 106 AND ADJOINING GOVERNMENT LAND, KAM SHEUNG ROAD, KAM TIN, YUEN LONG**

DRAWING TITLE	SWEPT PATH ANALYSIS - LGV (TO/FROM KAM SHEUNG ROAD) (OUT)
---------------	--

DRAWING NO.	SP-02	REV.	.
-------------	--------------	------	---

LLA 顧問有限公司
Consultancy Limited



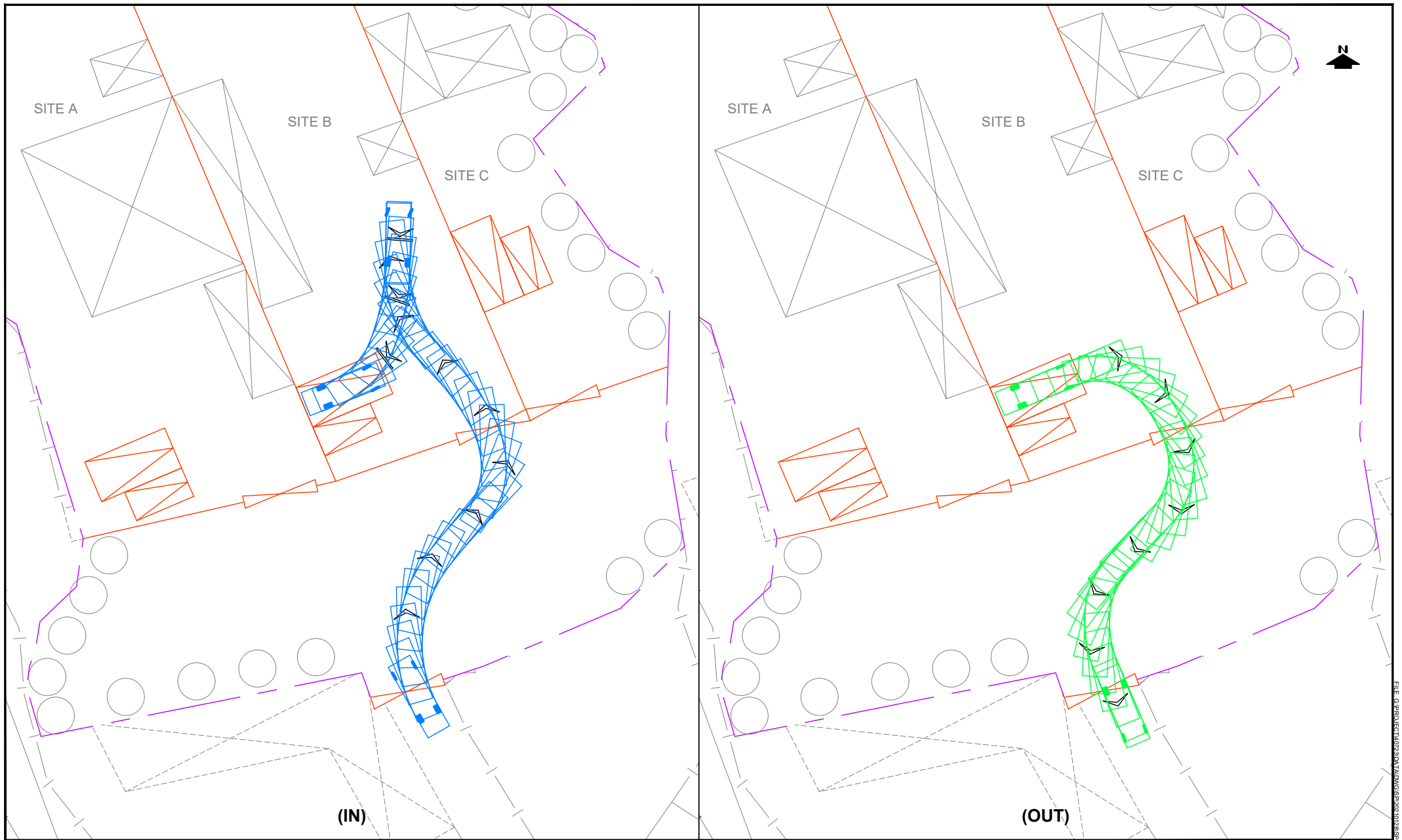
PROJECT NO.	40723	
DESIGNED	SLN	DATE JAN 2021
DRAWN	CLL	SCALE 1:400
CHECKED	SLN	

PROJECT TITLE: PROPOSED TEMPORARY OPEN STORAGE OF CONSTRUCTION MACHINERY, CONSTRUCTION MATERIAL, VEHICLE AND VEHICLE PARTS FOR A PERIOD OF 3 YEARS AT LOTS 447 RP (PART) AND 448 (PART) IN D.D. 106 AND ADJOINING GOVERNMENT LAND, KAM SHEUNG ROAD, KAM TIN, YUEN LONG

DRAWING NO.	SP-03	REV.	.
-------------	-------	------	---

SWEPT PATH ANALYSIS - LGV (SITE A)





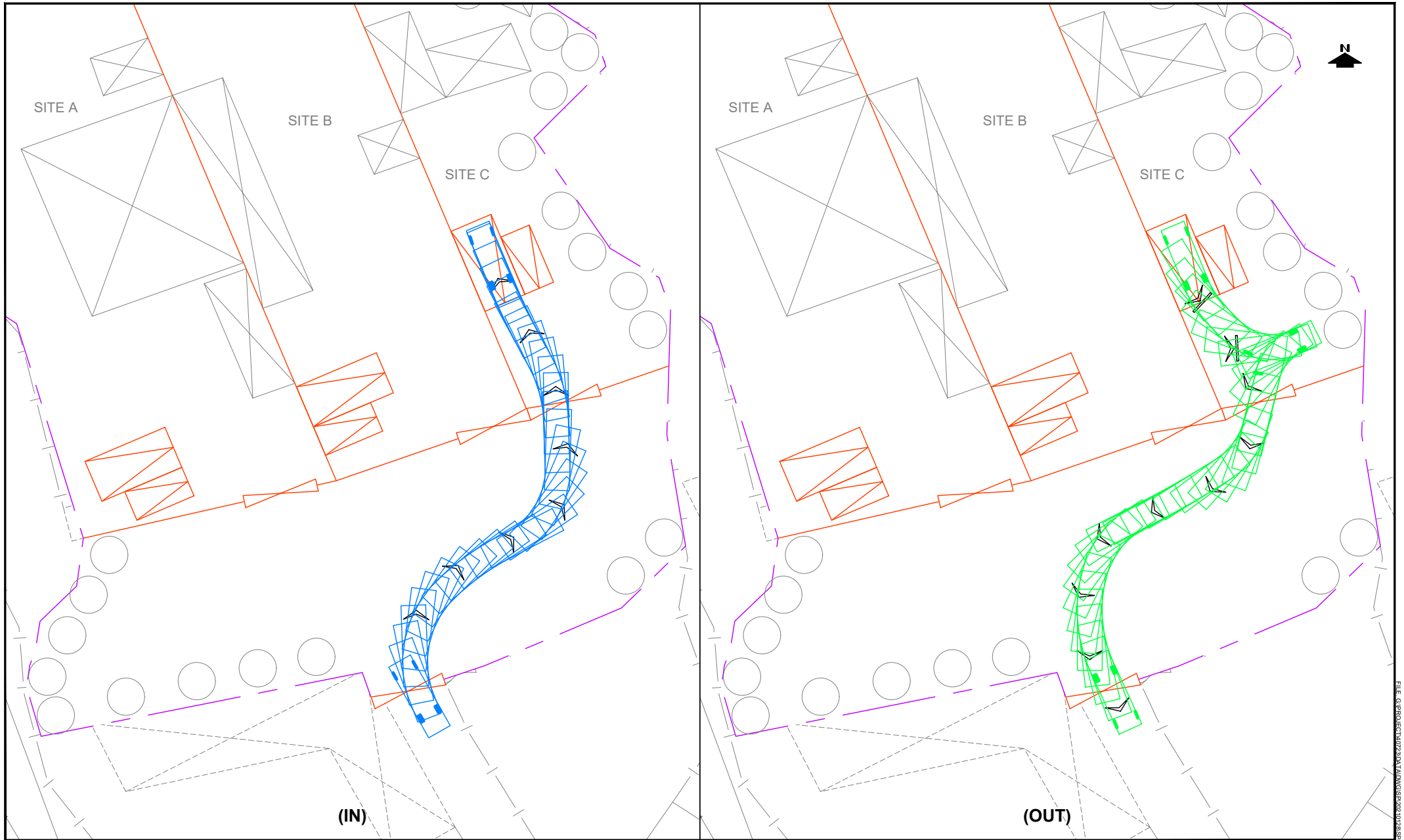
PROJECT NO.	40723	
DESIGNED	SLN	DATE JAN 2021
DRAWN	CLL	SCALE 1:400
CHECKED	SLN	

PROJECT TITLE PROPOSED TEMPORARY OPEN STORAGE OF CONSTRUCTION MACHINERY, CONSTRUCTION MATERIAL, VEHICLE AND VEHICLE PARTS FOR A PERIOD OF 3 YEARS AT LOTS 447 RP (PART) AND 448 (PART) IN D.D. 106 AND ADJOINING GOVERNMENT LAND, KAM SHEUNG ROAD, KAM TIN, YUEN LONG

DRAWING NO.	SP-04	REV.	.
-------------	-------	------	---

SWEPT PATH ANALYSIS - LGV (SITE B)

LLA 顧問有限公司
Consultancy Limited

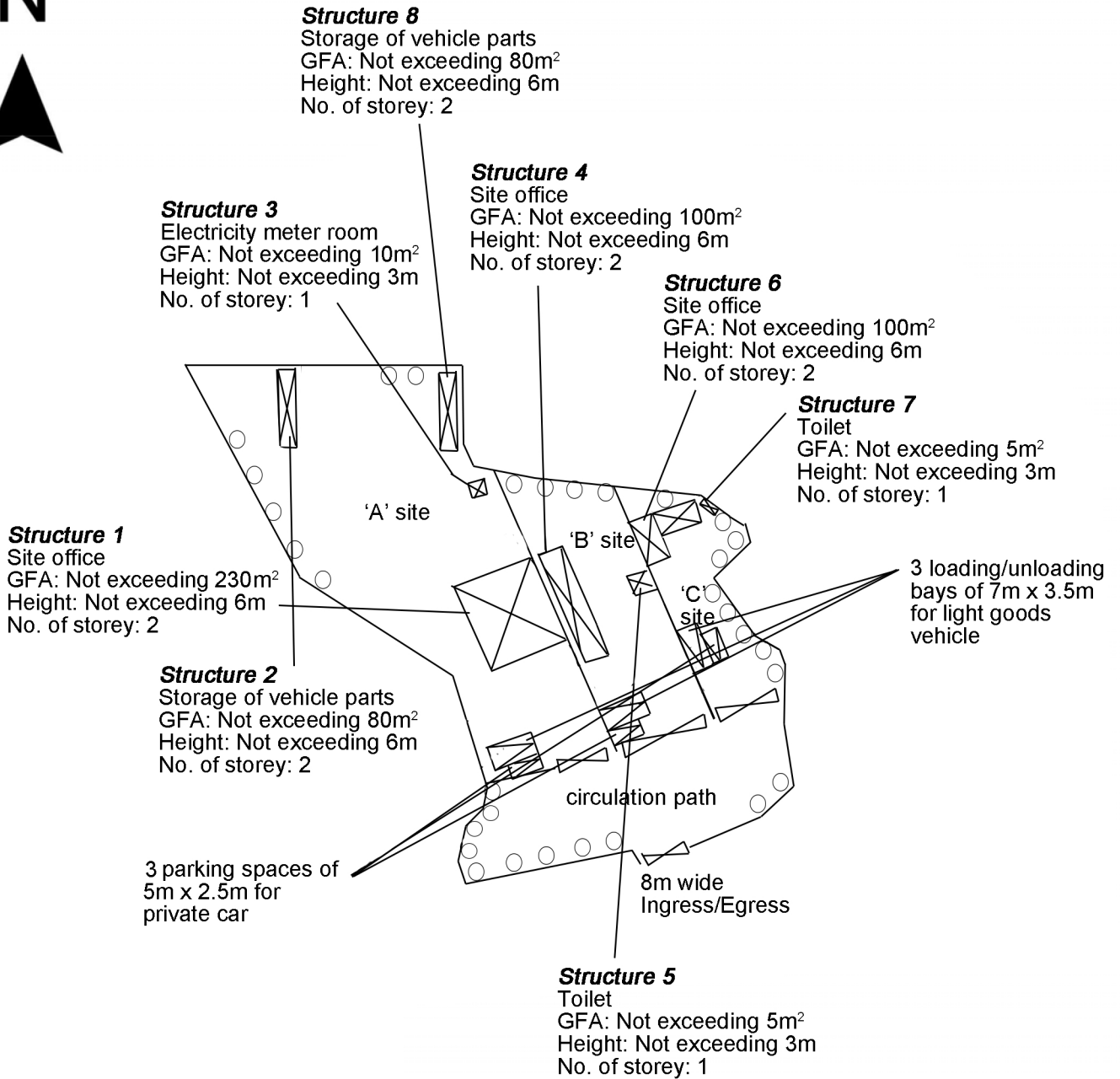


PROJECT NO.	40723	
DESIGNED	SLN	DATE JAN 2021
DRAWN	CLL	SCALE 1:400
CHECKED	SLN	

PROJECT TITLE	PROPOSED TEMPORARY OPEN STORAGE OF CONSTRUCTION MACHINERY, CONSTRUCTION MATERIAL, VEHICLE AND VEHICLE PARTS FOR A PERIOD OF 3 YEARS AT LOTS 447 RP (PART) AND 448 (PART) IN D.D. 106 AND ADJOINING GOVERNMENT LAND, KAM SHEUNG ROAD, KAM TIN, YUEN LONG	
DRAWING TITLE	SWEPT PATH ANALYSIS - LGV (SITE C)	

DRAWING NO.	SP-05	REV.	.
LLA 顧問有限公司		Consultancy Limited	

Proposed Tree	Approximate Height	Spacing	Quantity
○ Existing trees to be preserved	2.75m	4m	31



Usage

- 'A' site - Open storage of vehicle and vehicle parts
- 'B' site - Open storage of construction machinery and construction material
- 'C' site - Open storage of construction machinery and construction material

<p>Project 項目名稱: Proposed Temporary Open Storage of Construction Machinery, Construction Material, Vehicle and Vehicle Parts for a Period of 3 Years at Lots 447RP (Part) & 448 (Part) in D.D. 106 and Adjoining Government Land, Kam Sheung Road, Kam Tin, Yuen Long, N.T.</p>	<p>Drawing Title 圖目: Proposed Landscape & Tree Preservation Plan</p> <p>Drawing No. 圖號: Figure 5</p>	<p>Remarks 備註:</p> <p>Scale 比例: 1:1000</p>
---	--	--