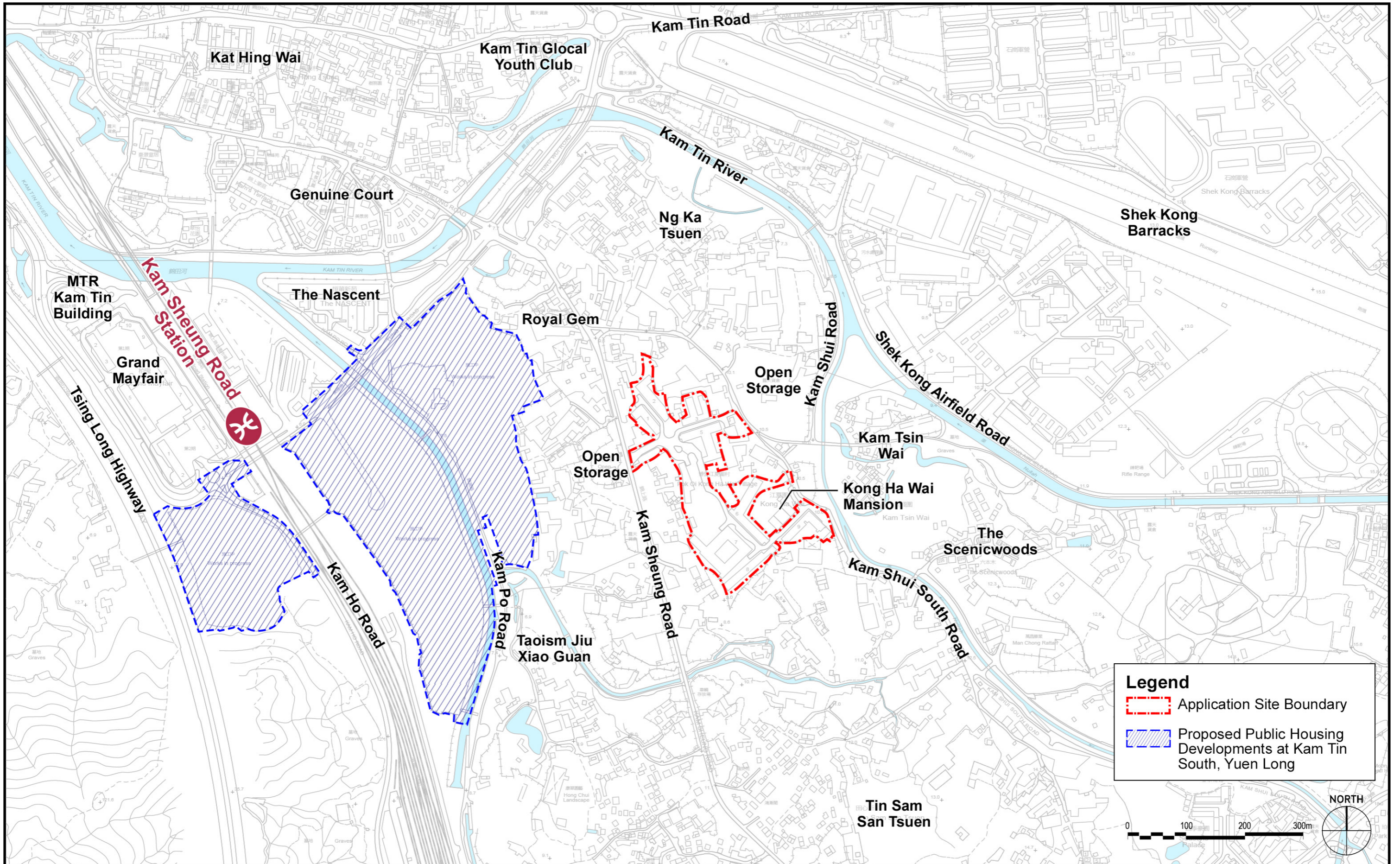




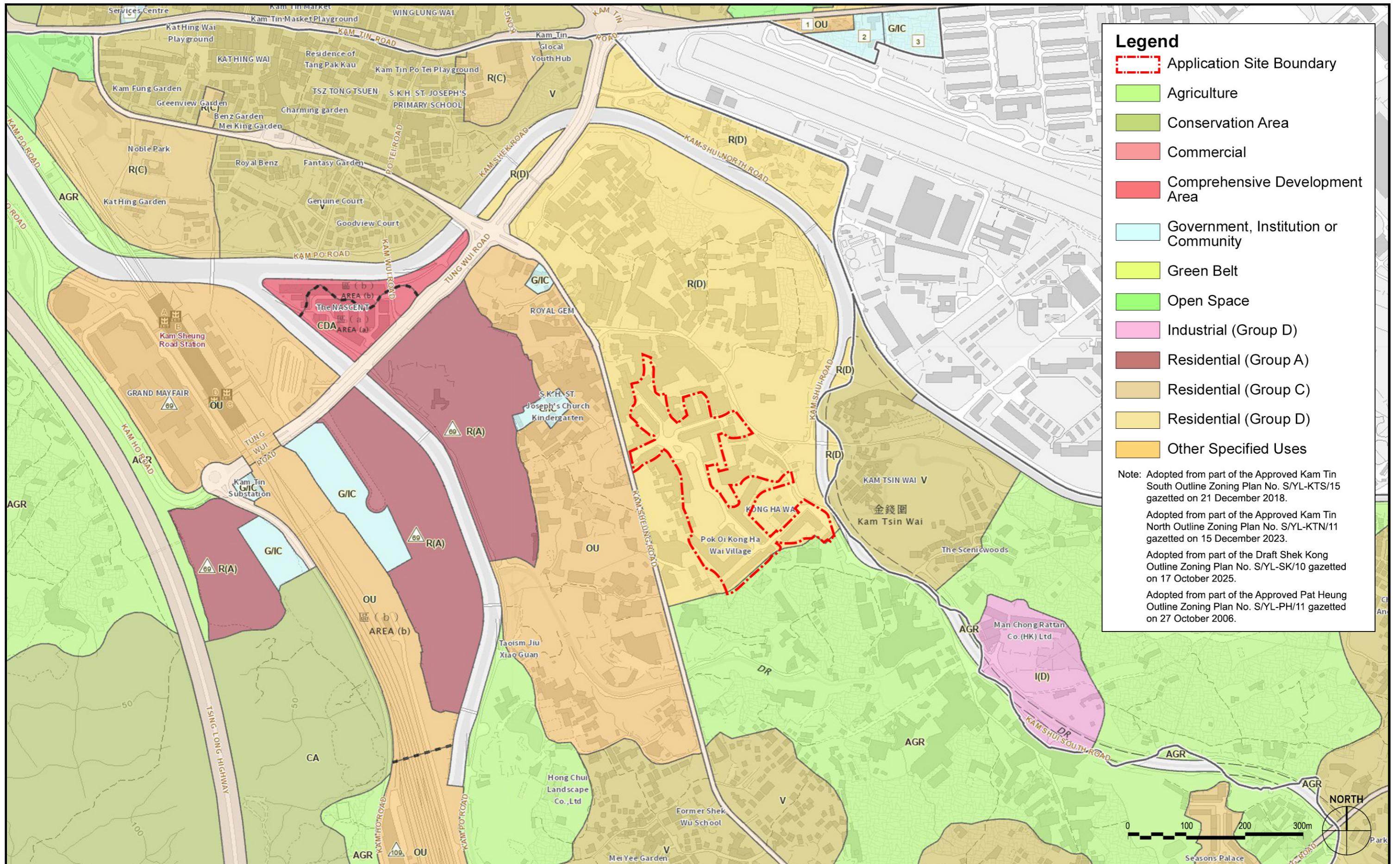
Figures



Section 16 Application for Temporary Transitional Housing Development for a Period of 3 Years (Renewal of Planning Approval under Application No. A/YL-KTS/960)



Title	Site Location Plan		
Scale	1:6,000 @ A3	Date	March 2026
		Figure No.	1.1



Legend

- Application Site Boundary
- Agriculture
- Conservation Area
- Commercial
- Comprehensive Development Area
- Government, Institution or Community
- Green Belt
- Open Space
- Industrial (Group D)
- Residential (Group A)
- Residential (Group C)
- Residential (Group D)
- Other Specified Uses

Note: Adopted from part of the Approved Kam Tin South Outline Zoning Plan No. S/YL-KTS/15 gazetted on 21 December 2018.
 Adopted from part of the Approved Kam Tin North Outline Zoning Plan No. S/YL-KTN/11 gazetted on 15 December 2023.
 Adopted from part of the Draft Shek Kong Outline Zoning Plan No. S/YL-SK/10 gazetted on 17 October 2025.
 Adopted from part of the Approved Pat Heung Outline Zoning Plan No. S/YL-PH/11 gazetted on 27 October 2006.



Section 16 Application for Temporary Transitional Housing Development for a Period of 3 Years (Renewal of Planning Approval under Application No. A/YL-KTS/960)



Title		Outline Zoning Plan	
Scale	1:6,000 @ A3	Date	March 2026
		Figure No.	1.2

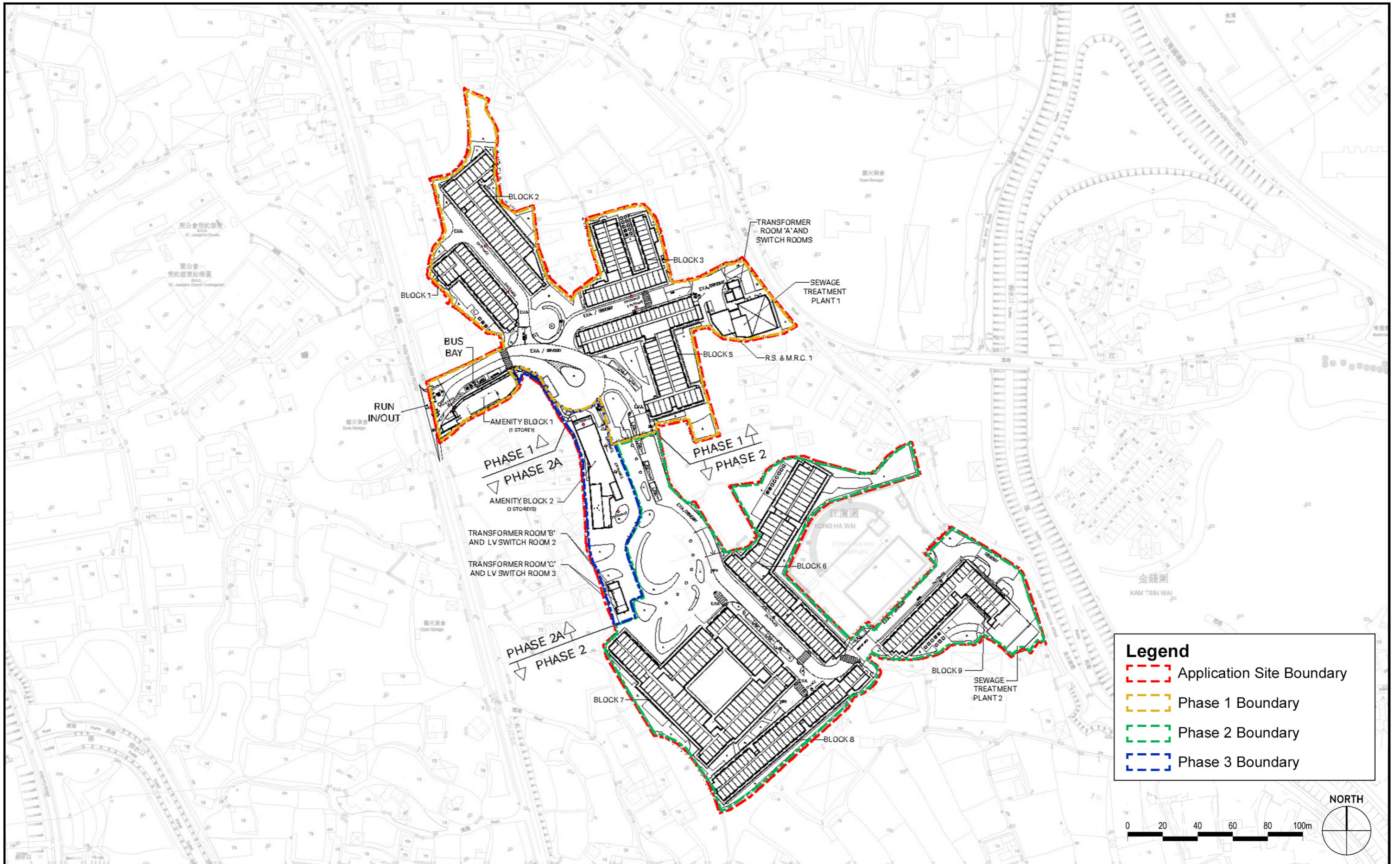


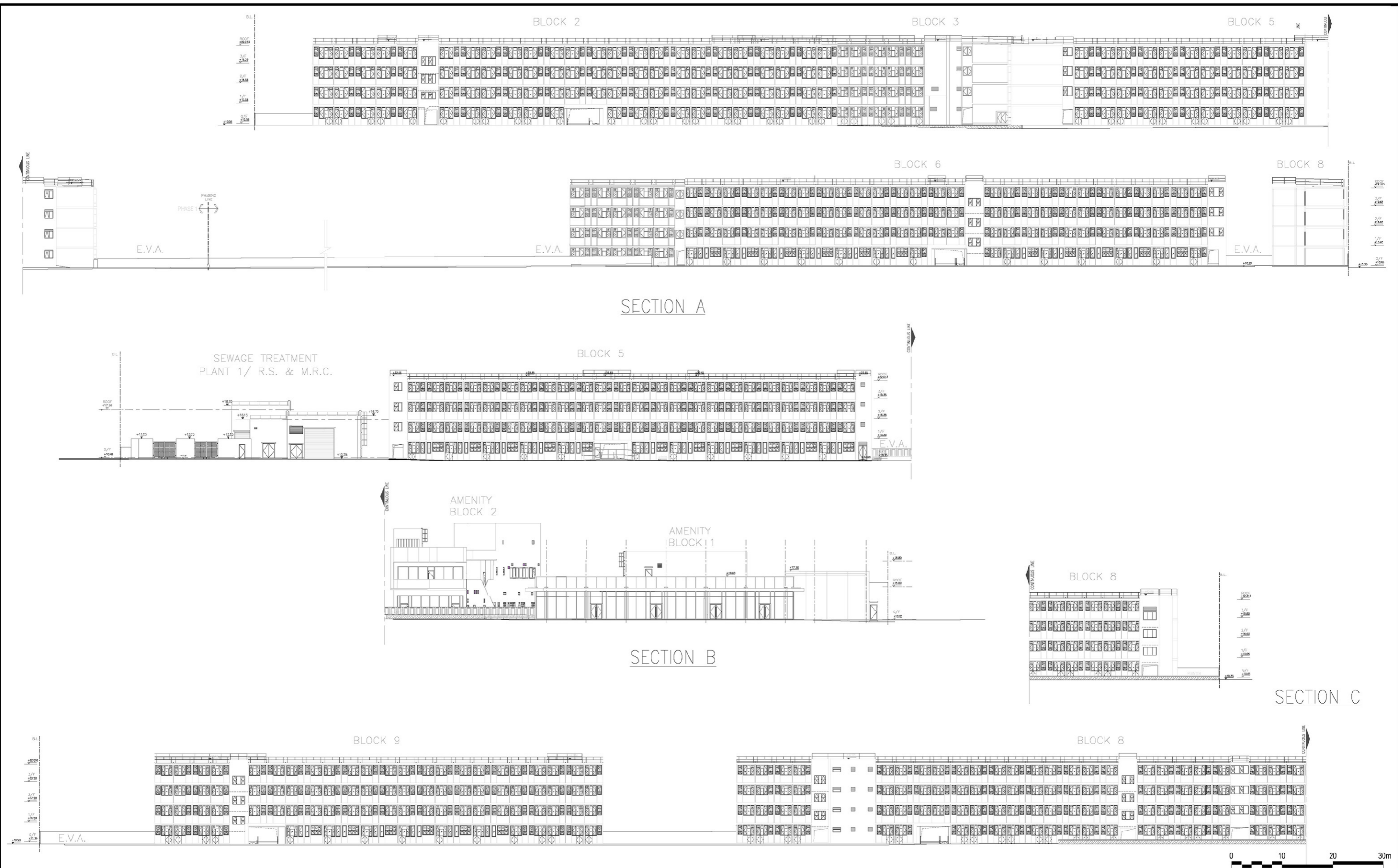
Legend

- Application Site Boundary
- Proposed Public Housing Developments at Kam Tin South, Yuen Long

Source: GeolInfo Map (www.map.gov.hk)



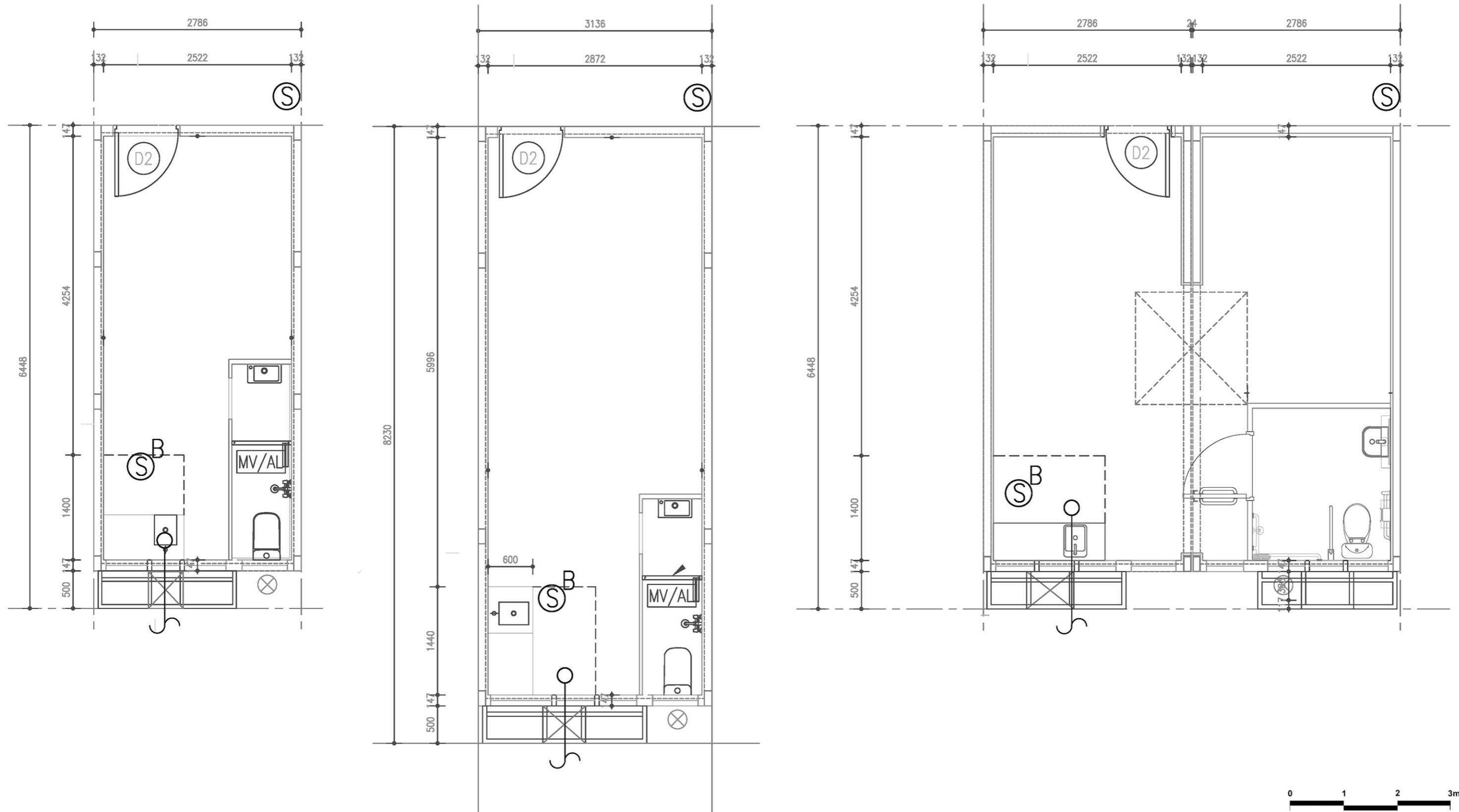




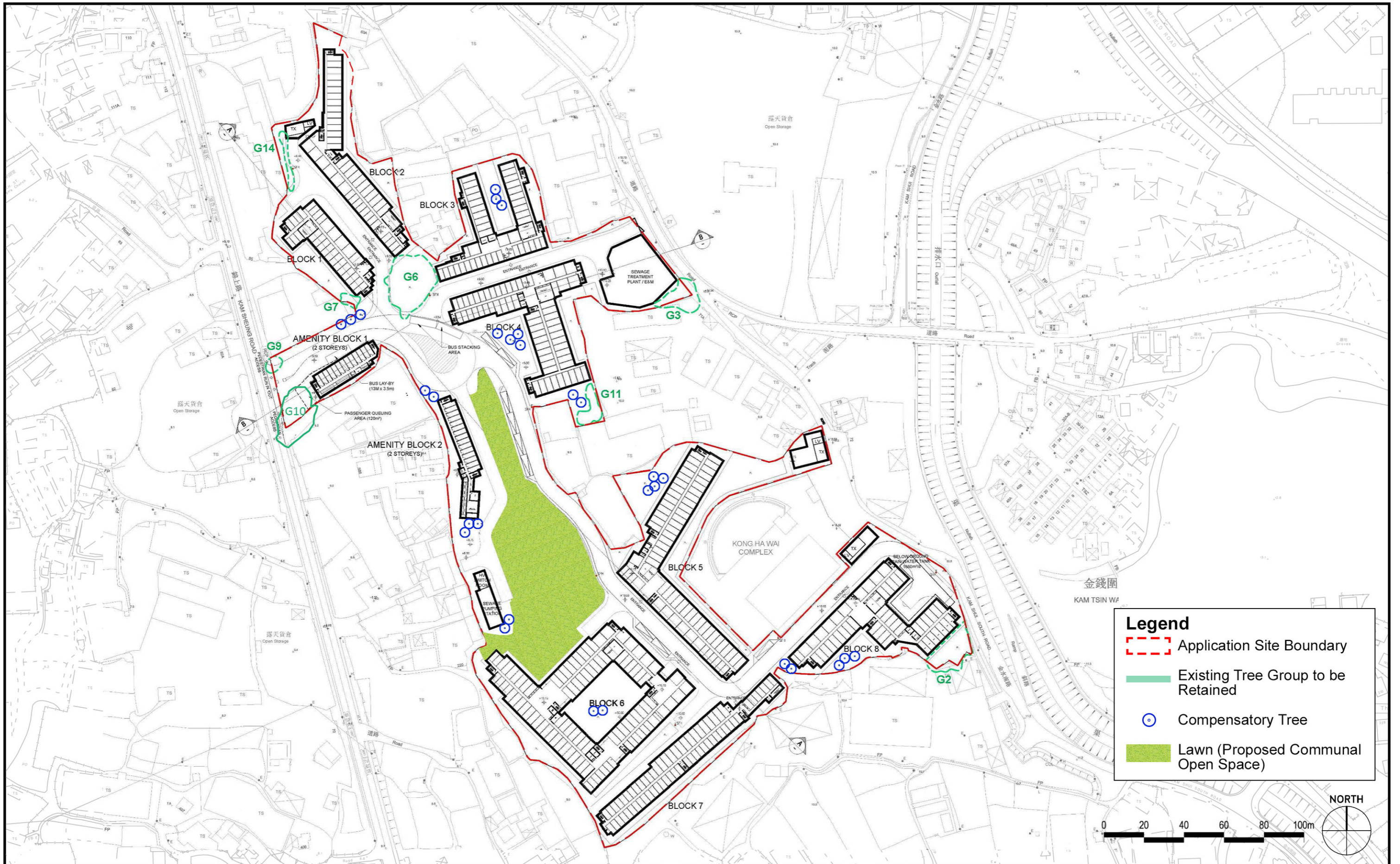
Type A

Type B

Type C







Legend

- Application Site Boundary
- Existing Tree Group to be Retained
- Compensatory Tree
- Lawn (Proposed Communal Open Space)

