

LIST OF PLANS

Plan 1	Location plan
Plan 2	Plan showing the zoning of the Site
Plan 3	Plan showing the land status of the Site
Plan 4	TPB-PG No. 13G
Plan 5	Layout plan
Plan 6	Swept path analysis

LIST OF APPENDICES

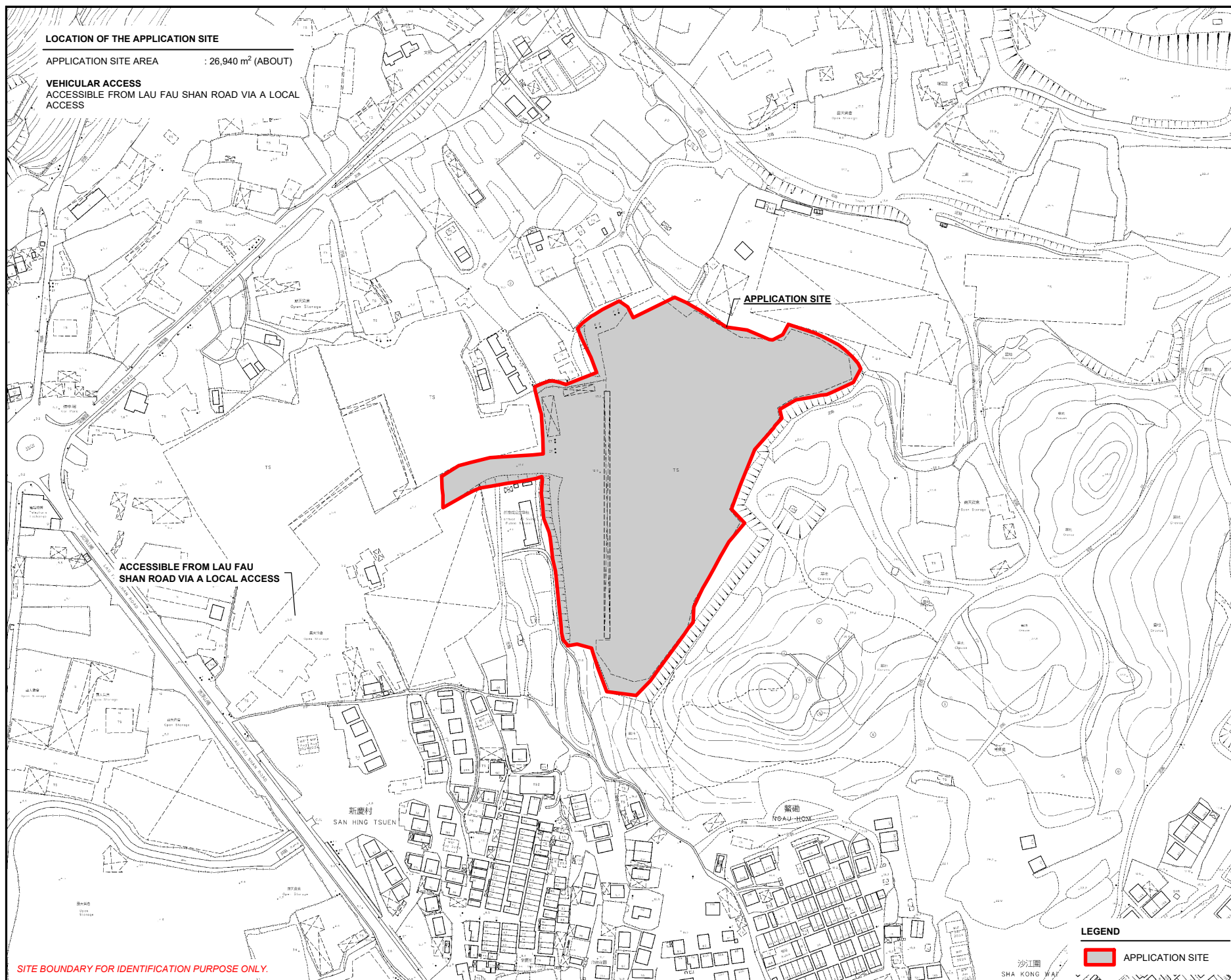
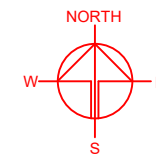
Appendix I	As-built drainage plan
Appendix II	Photographic records of the existing drainage facilities
Appendix III	Geotechnical Planning Review Report

LOCATION OF THE APPLICATION SITE

APPLICATION SITE AREA : 26,940 m² (ABOUT)

VEHICULAR ACCESS

ACCESSIBLE FROM LAU FAU SHAN ROAD VIA A LOCAL ACCESS



ACCESSIBLE FROM LAU FAU SHAN ROAD VIA A LOCAL ACCESS

APPLICATION SITE

SITE BOUNDARY FOR IDENTIFICATION PURPOSE ONLY.

LEGEND

APPLICATION SITE

PLANNING CONSULTANT



PROJECT

TEMPORARY LOGISTICS CENTRE WITH ANCILLARY OFFICE AND PARKING OF VEHICLES FOR A PERIOD OF 3 YEARS

SITE LOCATION

VARIOUS LOTS IN D.D. 129 AND ADJOINING GOVERNMENT LAND, LAU FAU SHAN, YUEN LONG, NEW TERRITORIES

SCALE

1 : 3000 @ A4

DRAWN BY MN DATE 11.3.2025

CHECKED BY DATE

APPROVED BY DATE

DWG. TITLE

LOCATION PLAN

DWG. NO.

PLAN 1

VER.

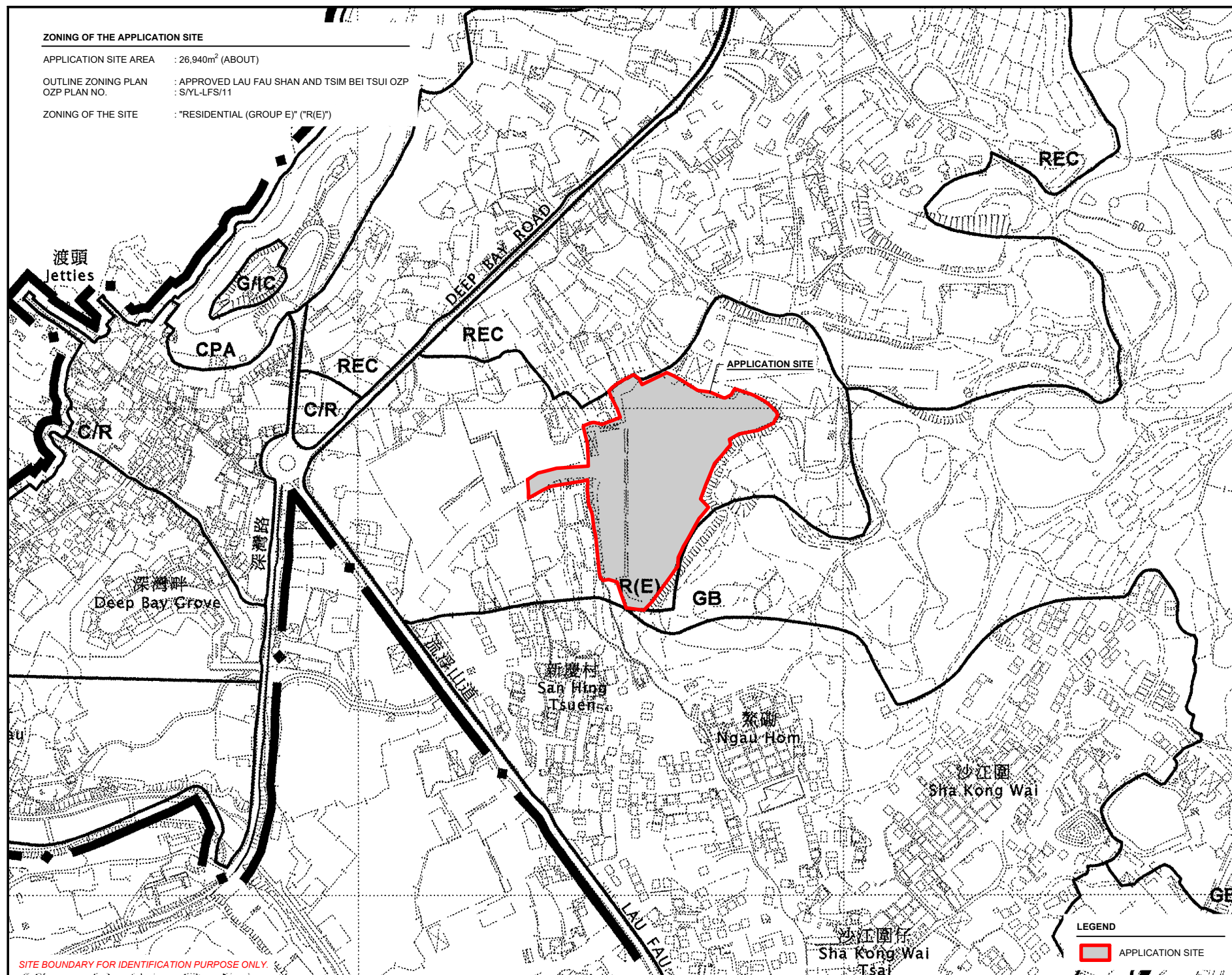
001

ZONING OF THE APPLICATION SITE

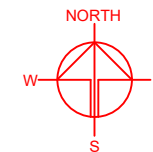
APPLICATION SITE AREA : 26,940m² (ABOUT)

OUTLINE ZONING PLAN : APPROVED LAU FAU SHAN AND TSIM BEI TSUI OZP
OZP PLAN NO. : S/YL-LFS/11

ZONING OF THE SITE : "RESIDENTIAL (GROUP E)" ("R(E)")



SITE BOUNDARY FOR IDENTIFICATION PURPOSE ONLY.



PLANNING CONSULTANT



PROJECT

TEMPORARY CENTRE WITH ANCILLARY OFFICE AND PARKING OF VEHICLES FOR A PERIOD OF 3 YEARS

SITE LOCATION

VARIOUS LOTS IN D.D. 129 AND ADJOINING GOVERNMENT LAND, LAU FAU SHAN, YUEN LONG, NEW TERRITORIES

SCALE

1 : 5000 @ A4

DRAWN BY : MN DATE : 11.3.2025

CHECKED BY : DATE :

APPROVED BY : DATE :

DWG. TITLE : ZONING OF THE SITE

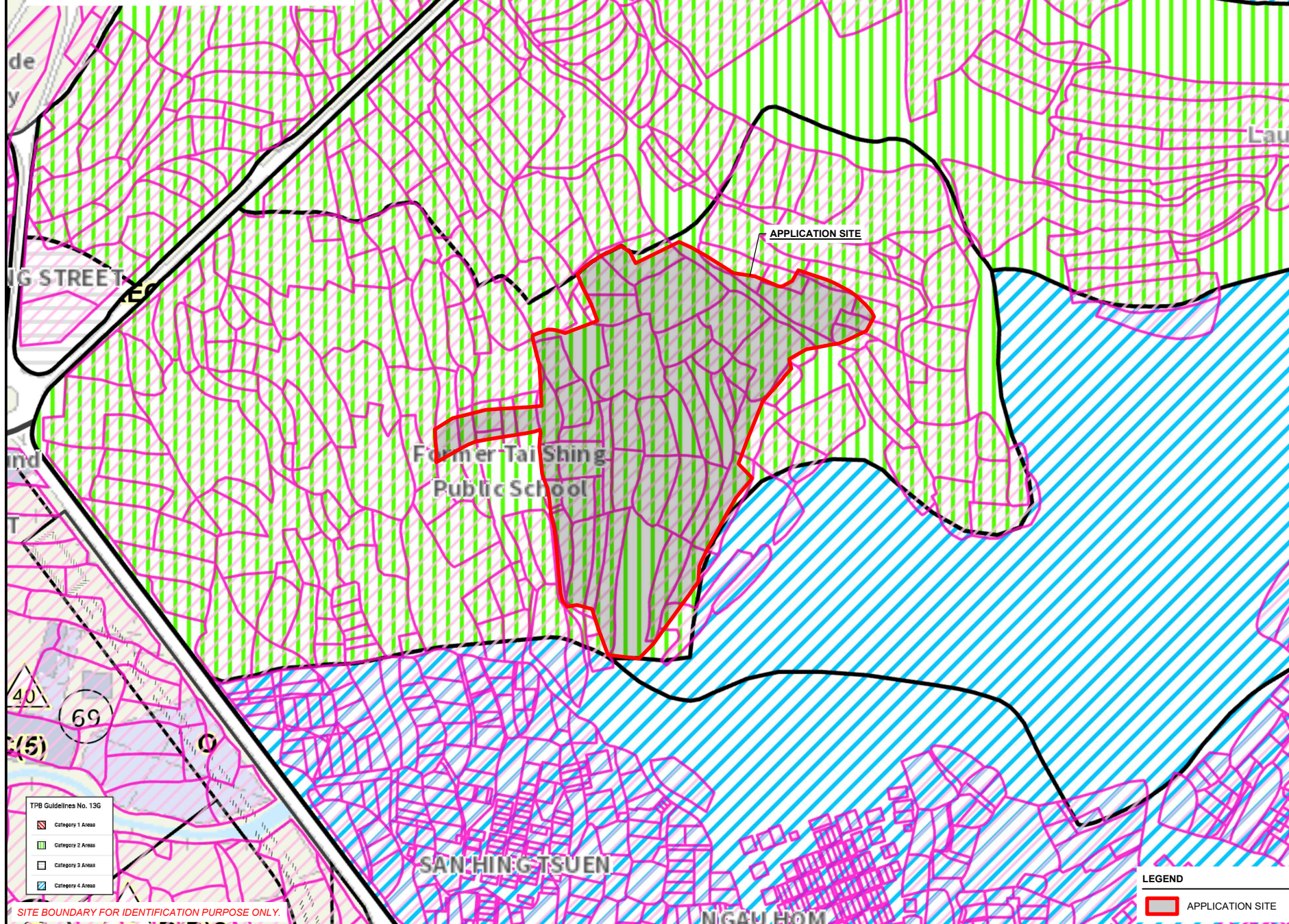
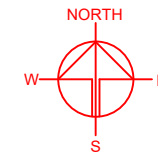
DWG. NO. : PLAN 2 VER. : 001

LEGEND

APPLICATION SITE

TOWN PLANNING BOARD GUIDELINES NO. 13G
FOR APPLICATION FOR OPEN STORAGE AND PORT BACK-UP
USES UNDER SECTION 16 OF THE TOWN PLANNING ORDINANCE

APPLICATION SITE AREA : 2,6940 m² (ABOUT)
CATEGORY OF THE SITE : CATEGORY 2 AREA



TPB Guidelines No. 13G

	Category 1 Areas
	Category 2 Areas
	Category 3 Areas
	Category 4 Areas

SITE BOUNDARY FOR IDENTIFICATION PURPOSE ONLY.

LEGEND

APPLICATION SITE

PLANNING CONSULTANT



PROJECT

TEMPORARY LOGISTICS
CENTRE WITH ANCILLARY
OFFICE AND PARKING OF
VEHICLES FOR A PERIOD OF 3
YEARS

SITE LOCATION

VARIOUS LOTS IN D.D. 129 AND
ADJOINING GOVERNMENT
LAND, LAU FAU SHAN, YUEN
LONG, NEW TERRITORIES

SCALE

1 : 2000 @ A4

DRAWN BY	DATE
MN	11.3.2025

CHECKED BY	DATE

APPROVED BY	DATE

DWG. TITLE
TPB PG-No. 13G

DWG NO.	VER.
PLAN 4	001

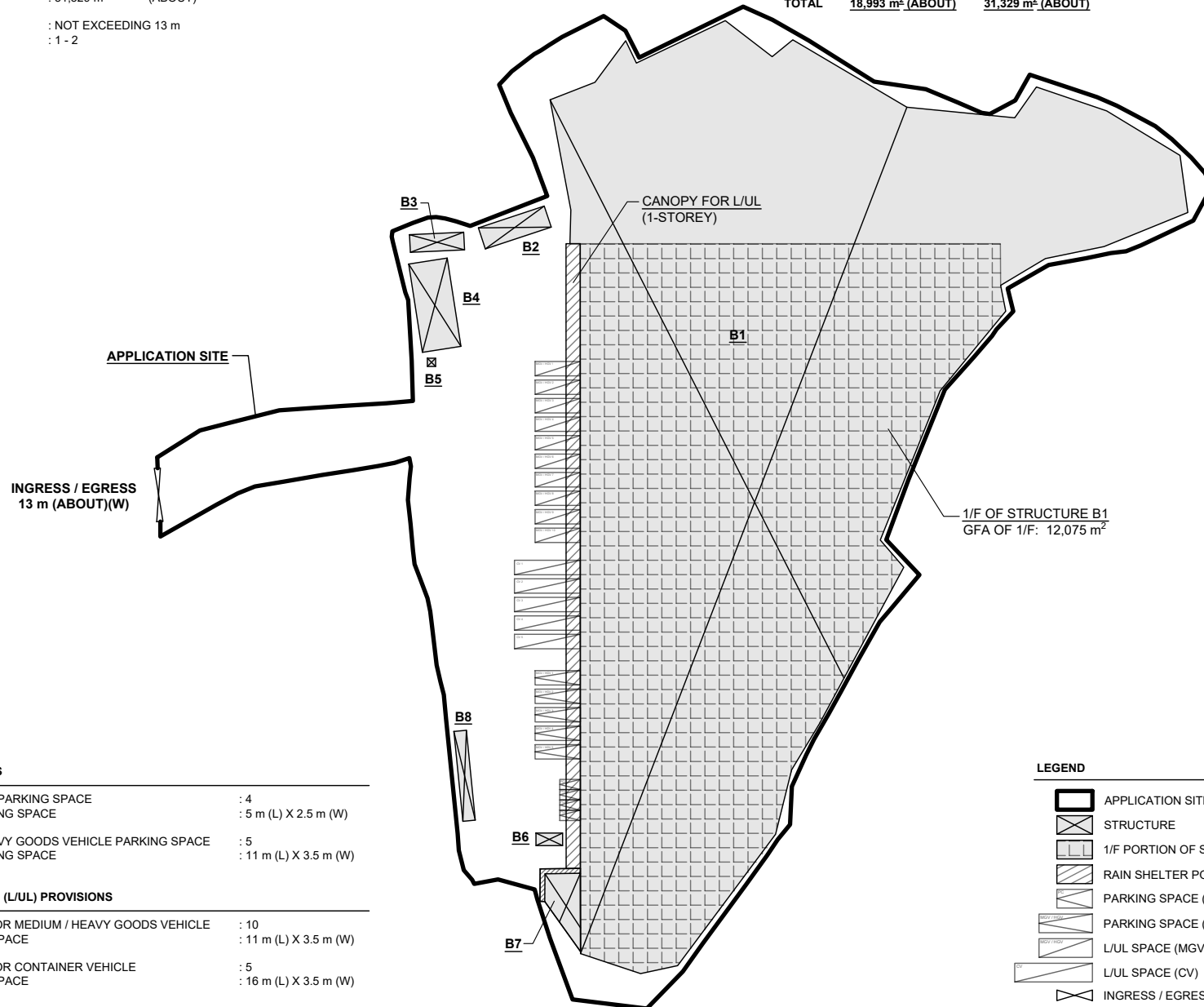
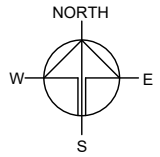
DEVELOPMENT PARAMETERS

APPLICATION SITE AREA	: 26,940 m ²	(ABOUT)
COVERED AREA	: 18,993 m ²	(ABOUT)
UNCOVERED AREA	: 7,947 m ²	(ABOUT)
PLOT RATIO	: 1.2	(ABOUT)
SITE COVERAGE	: 71 %	(ABOUT)

NO. OF STRUCTURE	: 8
DOMESTIC GFA	: NOT APPLICABLE
NON-DOMESTIC GFA	: 31,329 m ² (ABOUT)
TOTAL GFA	: 31,329 m ² (ABOUT)

BUILDING HEIGHT	: NOT EXCEEDING 13 m
NO. OF STOREY	: 1 - 2

STRUCTURE	USE	COVERED AREA	GROSS FLOOR AREA	BUILDING HEIGHT
B1	WAREHOUSE FOR LOGISTICS USE AND RAIN SHELTER FOR L/UL ACTIVITIES	18,517 m ² (ABOUT)	30,592 m ² (ABOUT)	NOT EXCEEDING 13 m (ABOUT)(2-STOREY)
B2	TOILET	54 m ² (ABOUT)	54 m ² (ABOUT)	3.5 m (ABOUT)(1-STOREY)
B3	WATER TANK AND PUMP ROOM	50 m ² (ABOUT)	50 m ² (ABOUT)	5 m (ABOUT)(1-STOREY)
B4	ANCILLARY OFFICE	150 m ² (ABOUT)	300 m ² (ABOUT)	6.5 m (ABOUT)(2-STOREY)
B5	GUARD ROOM	4 m ² (ABOUT)	4 m ² (ABOUT)	3.5 m (ABOUT)(1-STOREY)
B6	TOILET	20 m ² (ABOUT)	20 m ² (ABOUT)	3 m (ABOUT)(1-STOREY)
B7	SITE OFFICE AND RAIN SHELTER	131 m ² (ABOUT)	242 m ² (ABOUT)	NOT EXCEEDING 8 m (ABOUT)(2-STOREY)
B8	WASHROOM	67 m ² (ABOUT)	67 m ² (ABOUT)	3.5 m (ABOUT)(1-STOREY)
TOTAL		18,993 m ² (ABOUT)	31,329 m ² (ABOUT)	



PARKING PROVISIONS

NO. OF PRIVATE CAR PARKING SPACE	: 4
DIMENSION OF PARKING SPACE	: 5 m (L) X 2.5 m (W)
NO. OF MEDIUM / HEAVY GOODS VEHICLE PARKING SPACE	: 5
DIMENSION OF PARKING SPACE	: 11 m (L) X 3.5 m (W)

LOADING/UNLOADING (L/UL) PROVISIONS

NO. OF L/UL SPACE FOR MEDIUM / HEAVY GOODS VEHICLE	: 10
DIMENSION OF L/UL SPACE	: 11 m (L) X 3.5 m (W)
NO. OF L/UL SPACE FOR CONTAINER VEHICLE	: 5
DIMENSION OF L/UL SPACE	: 16 m (L) X 3.5 m (W)

LEGEND

	APPLICATION SITE
	STRUCTURE
	1/F PORTION OF STRUCTURE B1
	RAIN SHELTER PORTION OF STRUCTURE B1
	PARKING SPACE (PC)
	PARKING SPACE (MGV / HGV)
	L/UL SPACE (MGV / HGV)
	L/UL SPACE (CV)
	INGRESS / EGRESS

PLANNING CONSULTANT



PROJECT

TEMPORARY LOGISTICS CENTRE WITH ANCILLARY OFFICE AND PARKING OF VEHICLES FOR A PERIOD OF 3 YEARS

SITE LOCATION

VARIOUS LOTS IN D.D. 129 AND ADJOINING GOVERNMENT LAND, LAU FAU SHAN, YUEN LONG, NEW TERRITORIES

SCALE

1 : 1500 @ A4

DRAWN BY

MN

DATE

15.5.2025

CHECKED BY

DATE

APPROVED BY

DATE

DWG. TITLE

LAYOUT PLAN

DWG NO.

PLAN 5

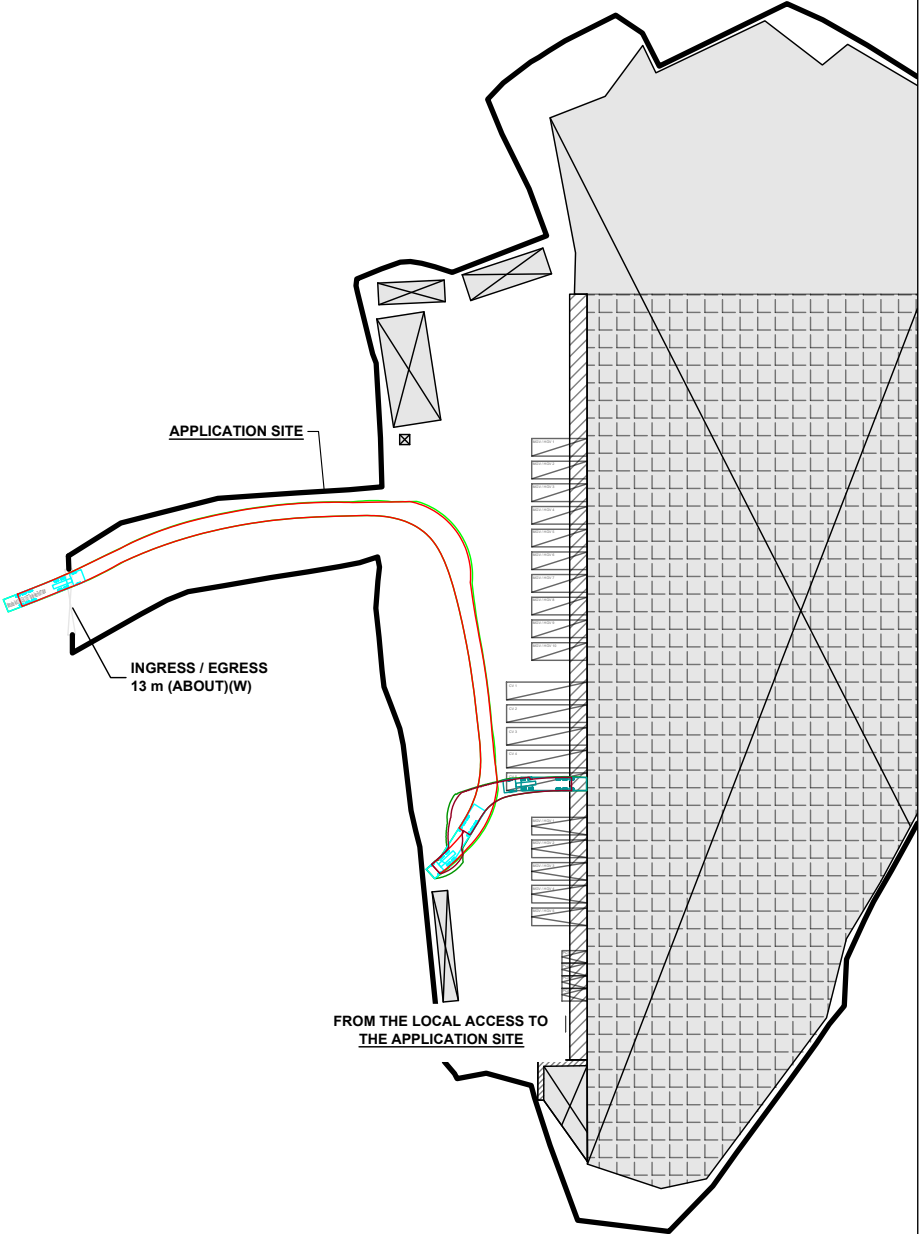
VER.

001

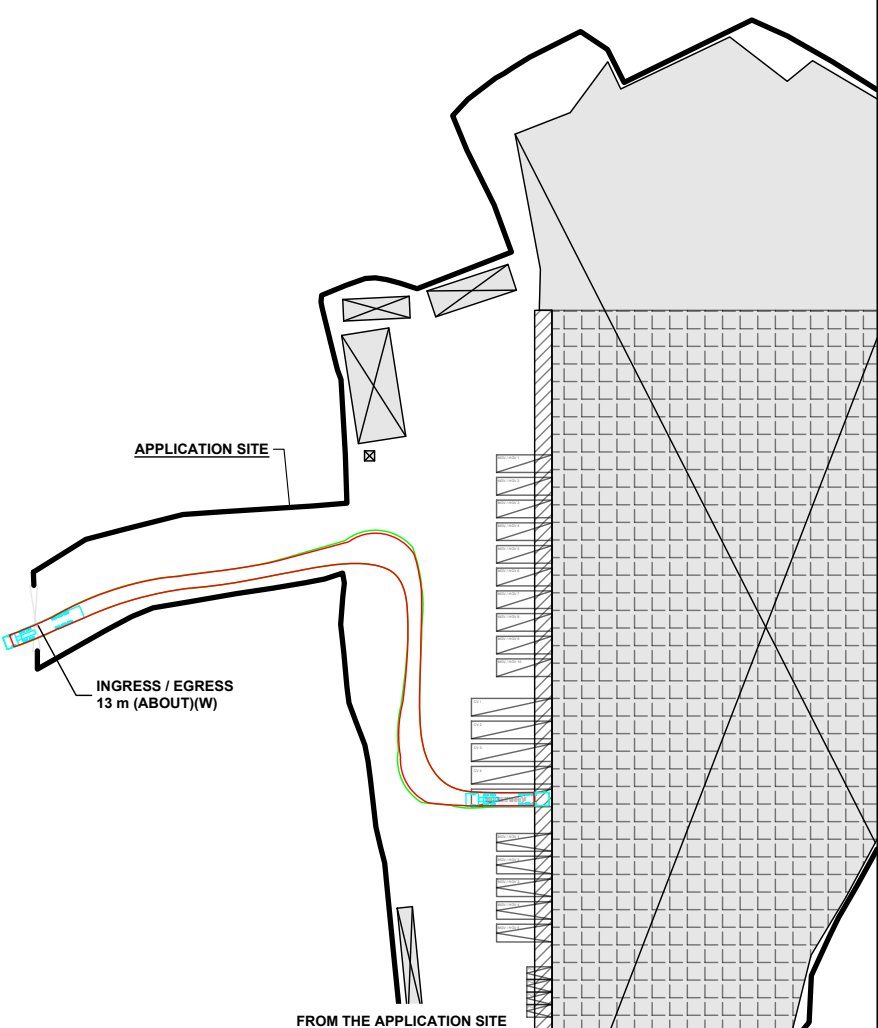
SWEPT PATH ANALYSIS

TYPE OF VEHICLE : CONTAINER VEHICLE
DIMENSION OF VEHICLE : 2.5 m (W) X 16 m (L)

SWEPT PATHS GENERATED BY AUTODESK VEHICLE TRACKING

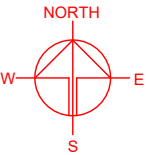


SITE BOUNDARY FOR IDENTIFICATION PURPOSE ONLY.



FROM THE APPLICATION SITE
TO THE LOCAL ACCESS

- LEGEND**
- APPLICATION SITE
 - STRUCTURE
 - PARKING SPACE (PC)
 - PARKING SPACE (MGV / HGV)
 - L/UL SPACE (MGV / HGV)
 - L/UL SPACE (CV)
 - INGRESS / EGRESS
 - CONTAINER VEHICLE
 - SWEPT PATH OF VEHICLE



PLANNING CONSULTANT



PROJECT
TEMPORARY LOGISTICS
CENTRE WITH ANCILLARY
OFFICE AND PARKING OF
VEHICLES FOR A PERIOD OF 3
YEARS

SITE LOCATION
VARIOUS LOTS IN D.D. 129 AND
ADJOINING GOVERNMENT
LAND, LAU FAU SHAN, YUEN
LONG, NEW TERRITORIES

SCALE
1 : 1500 @ A4

DRAWN BY
MN

DATE
15.5.2025

CHECKED BY

DATE

APPROVED BY

DATE

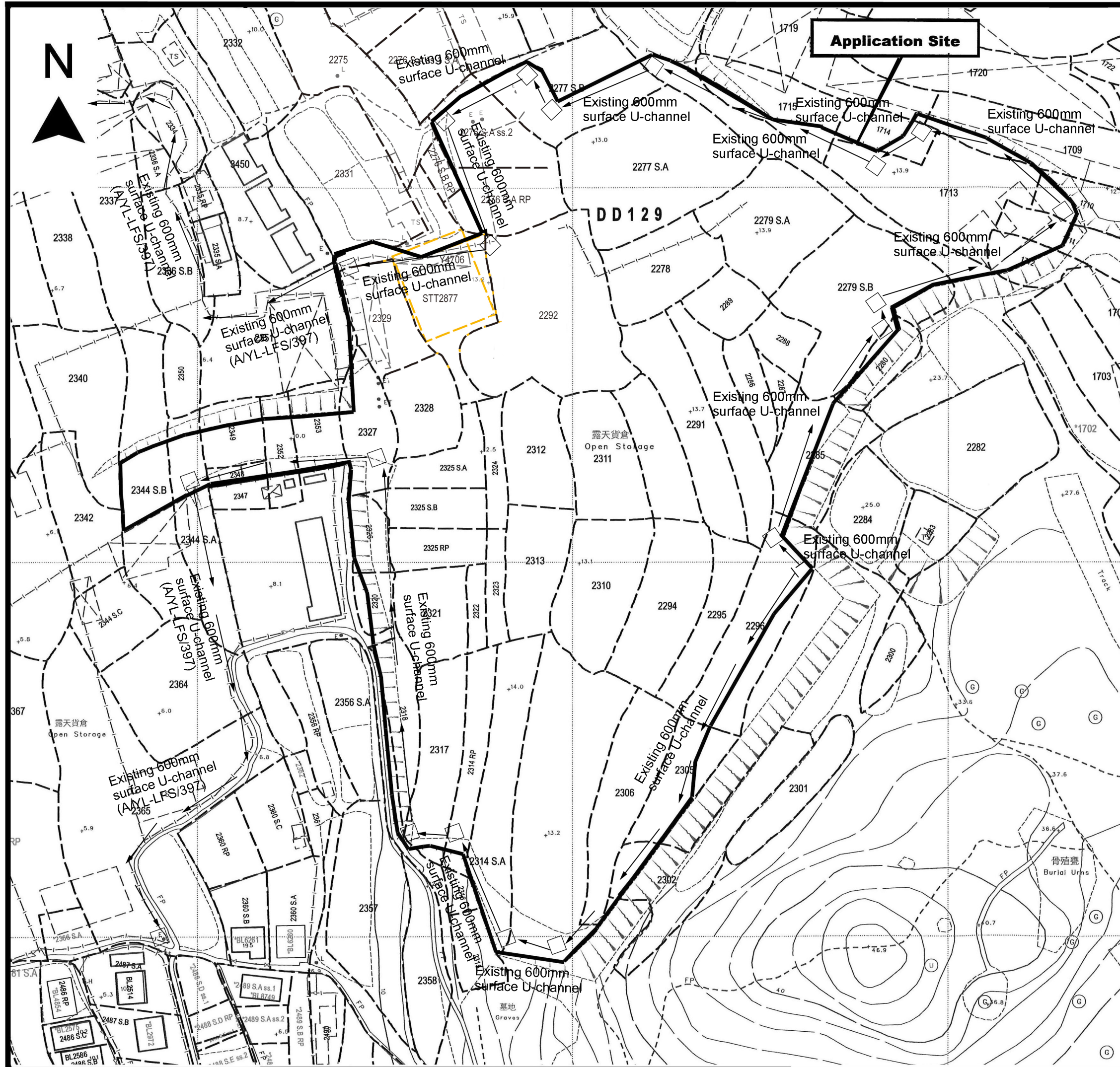
DWG. TITLE
SWEPT PATH ANALYSIS

DWG NO.
PLAN 6

VER.
001

Appendix I

As-built drainage plan

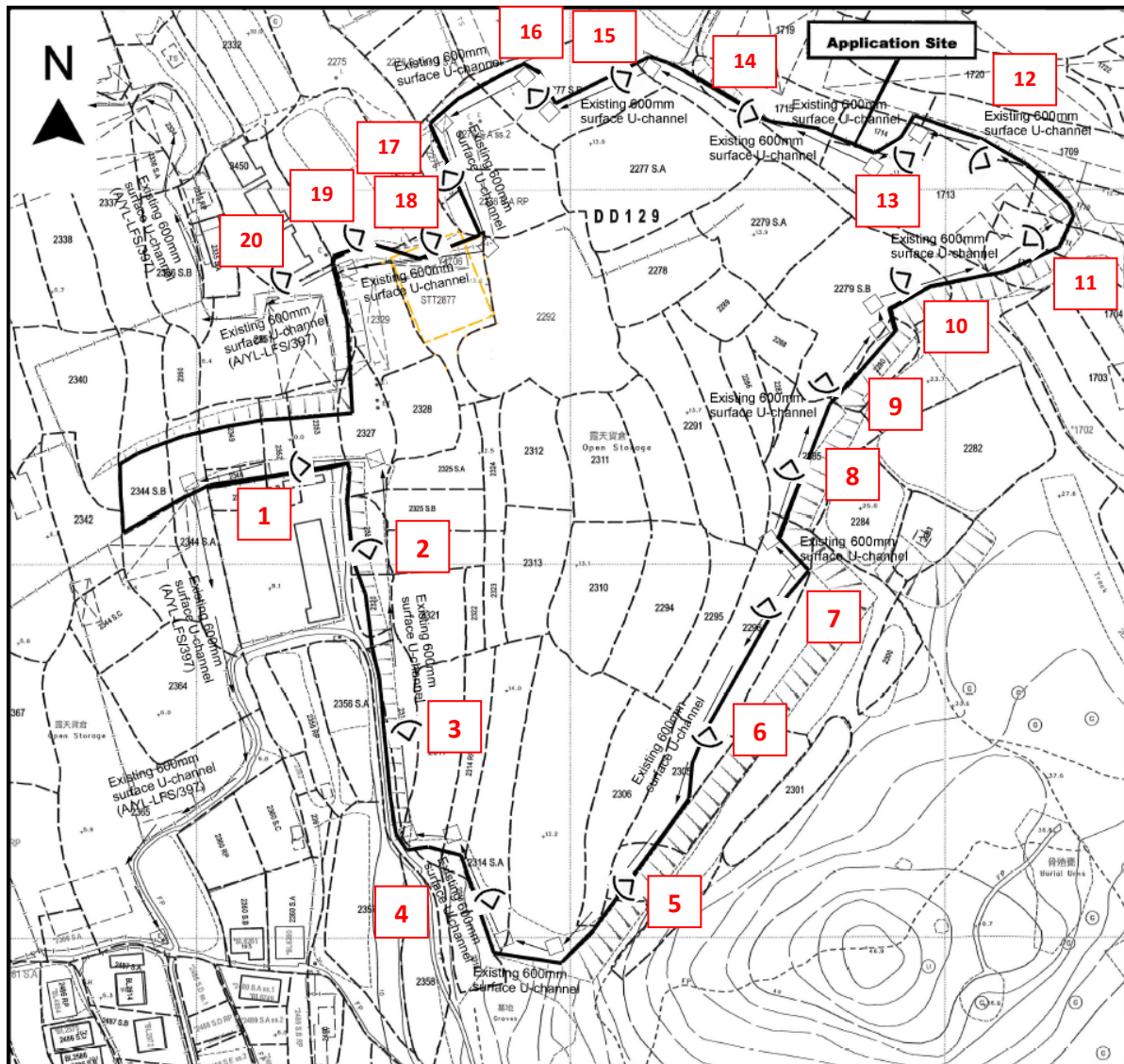


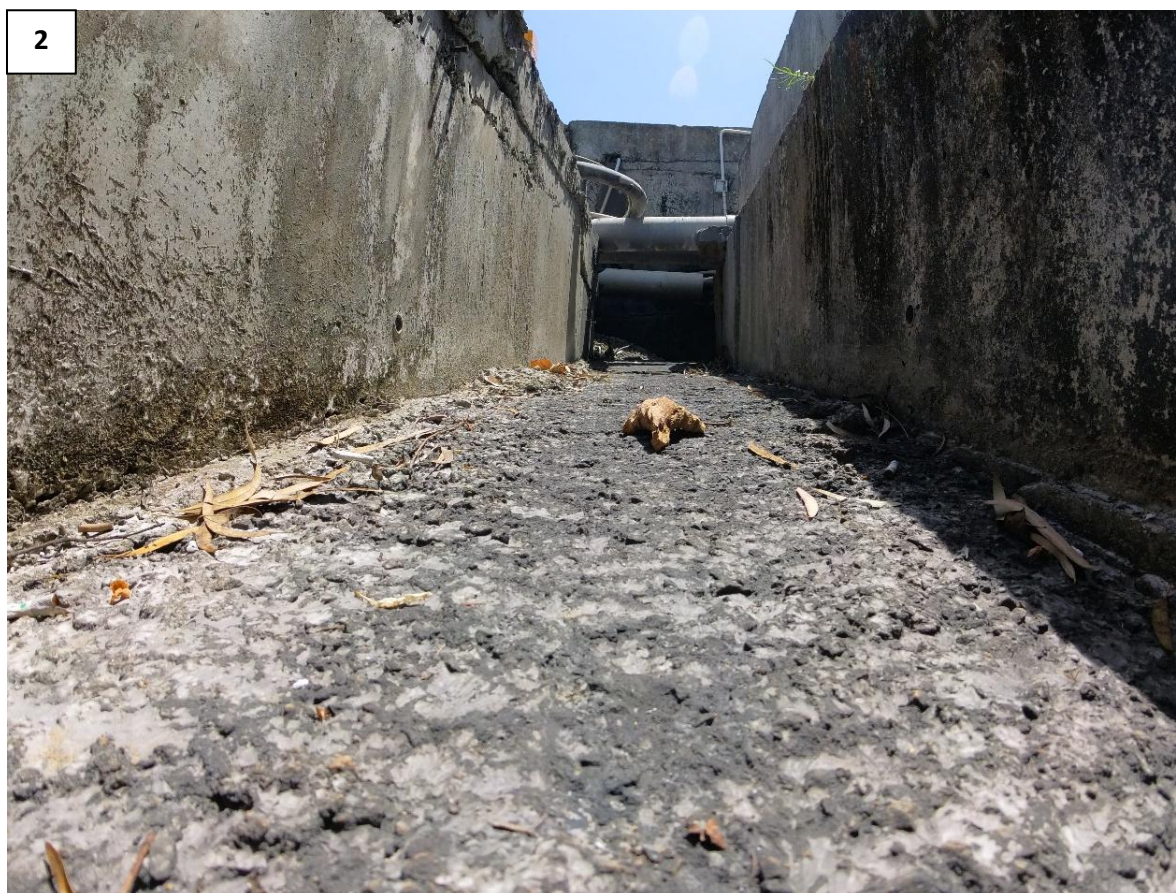
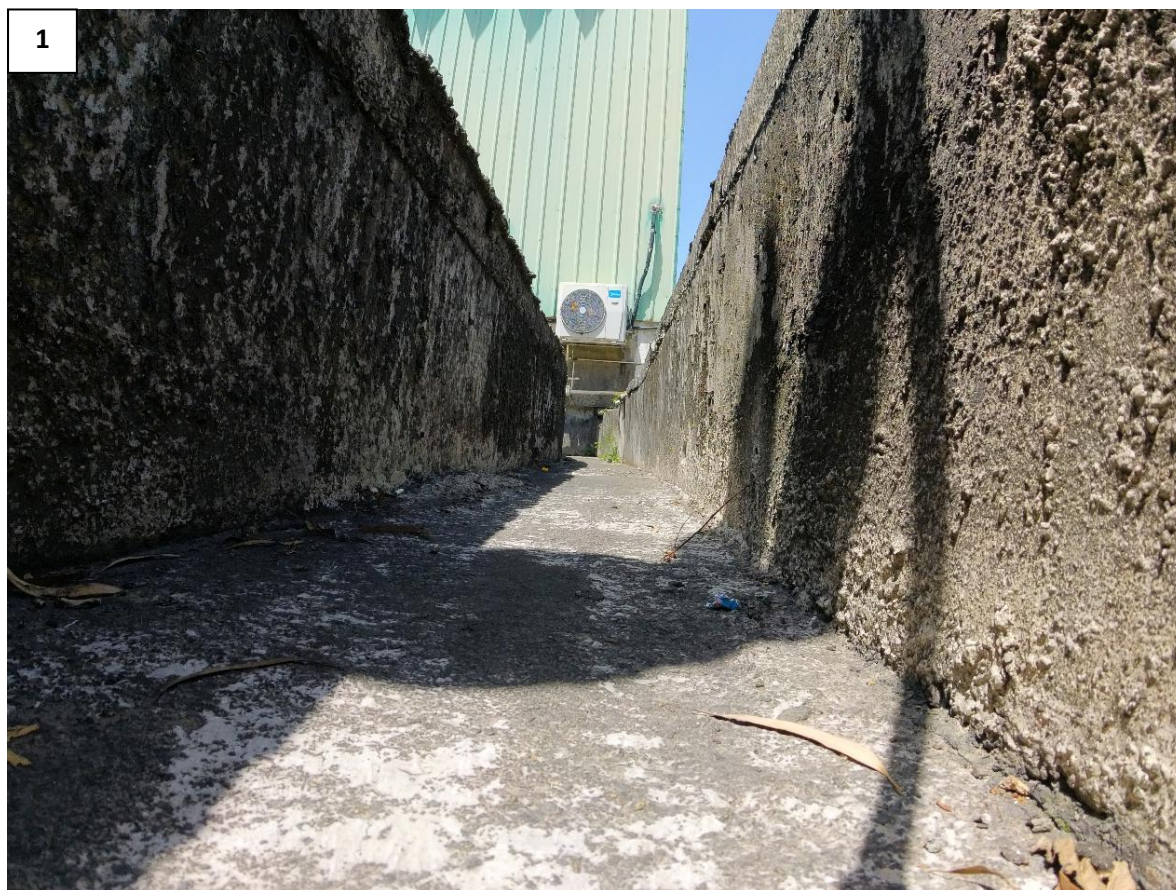
Project 項目名稱: Proposed Temporary Logistics Centre with Ancillary Office & Parking of Vehicle for a Period of 3 Years at Lots 1709(Part), 1710(Part), 1711(Part), 1712(Part), 1713, 1714(Part), 1715(Part), 1719(Part), 2276S.A ss.2 (Part), 2276 S.A RP (Part), 2277S.A, 2277S.B (Part), 2278, 2279S.A, 2279S.B (Part), 2280(Part), 2285(Part), 2286, 2287, 2288, 2289, 2291, 2292, 2294, 2295, 2296(Part), 2302(Part), 2305(Part), 2306, 2310, 2311, 2312, 2313, 2314S.A, 2314RP(Part), 2317(Part), 2318(Part), 2320(Part), 2321, 2322, 2323, 2324, 2325S.A, 2325S.B, 2325RP, 2326(Part), 2327(Part), 2328, 2329, 2344S.A(Part), 2344S.B (Part), 2348, 2349(Part), 2351(Part), 2352(Part), 2353(Part) in D.D.129 & Adjoining Government Land, Lau Fau Shan, Yuen Long, N.T.	
Drawing No. 圖號: Figure 5	
Drawing Title 圖目: As-built Drainage Plan	
Remarks 備註: <div><input type="checkbox"/> Existing catchpit</div>	
Scale 比例:	1:1000

Appendix II

Photographic records of the existing drainage facilities

Appendix II - Photographic records of the existing drainage facilities







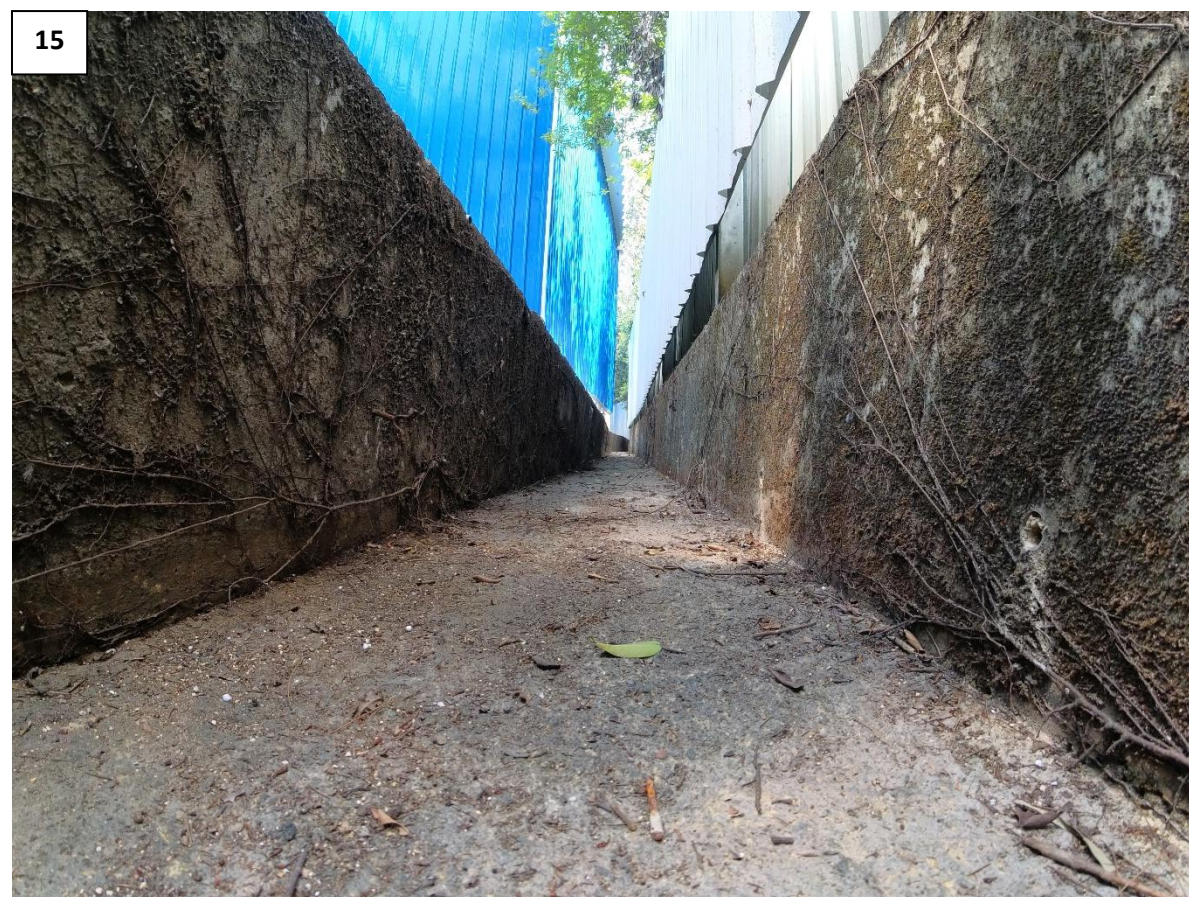


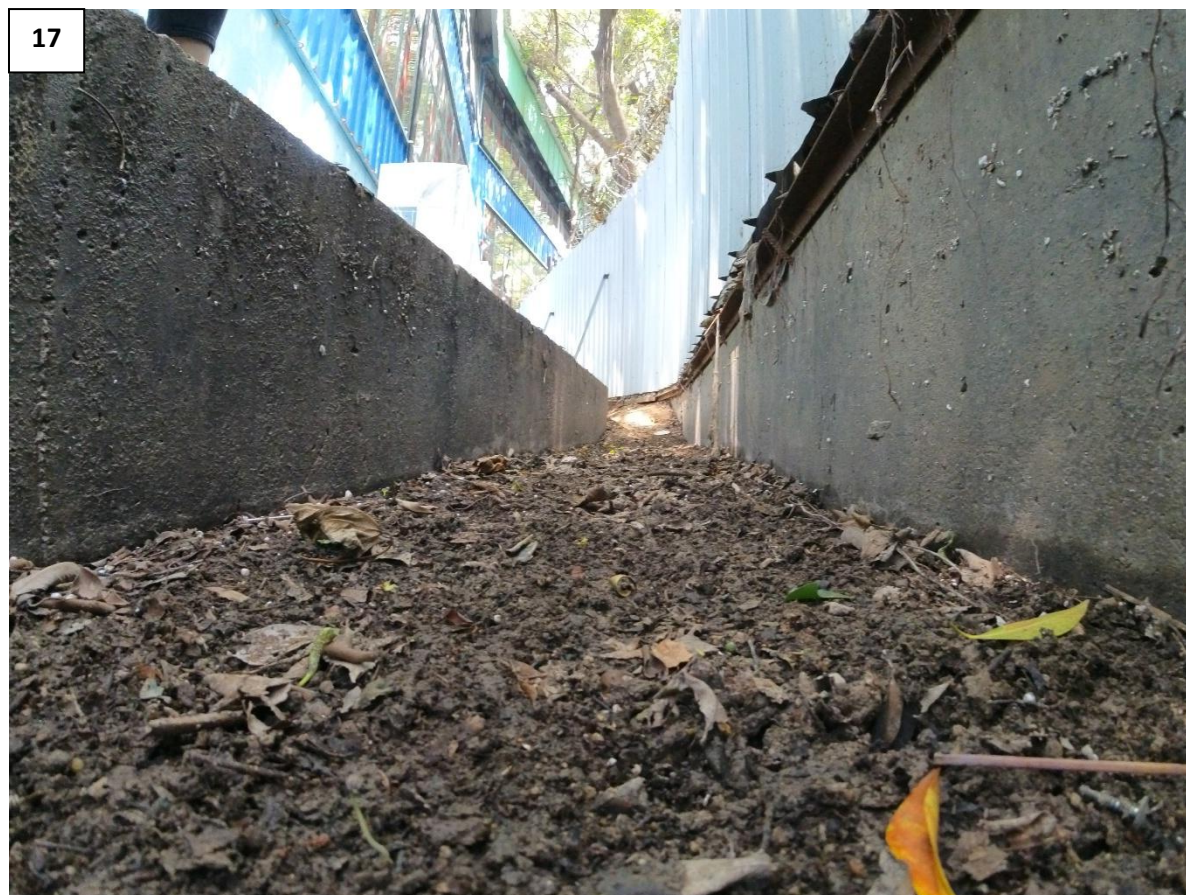












19



20

