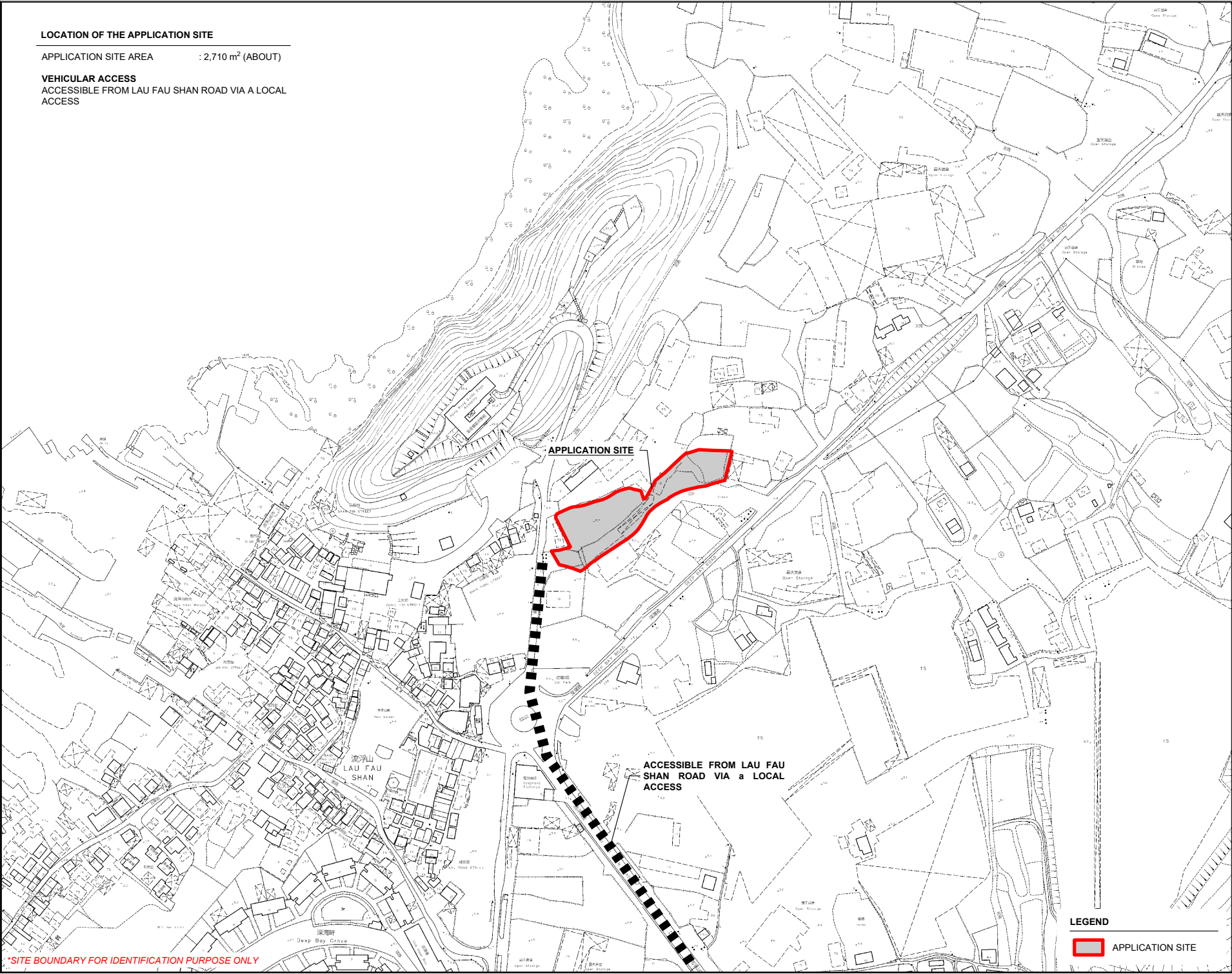
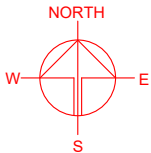


LOCATION OF THE APPLICATION SITE

APPLICATION SITE AREA : 2,710 m<sup>2</sup> (ABOUT)

VEHICULAR ACCESS  
ACCESSIBLE FROM LAU FAU SHAN ROAD VIA A LOCAL  
ACCESS



APPLICATION SITE

ACCESSIBLE FROM LAU FAU  
SHAN ROAD VIA a LOCAL  
ACCESS

\*SITE BOUNDARY FOR IDENTIFICATION PURPOSE ONLY

PLANNING CONSULTANT



PROJECT

PROPOSED TEMPORARY OPEN  
STORAGE OF CONSTRUCTION  
MATERIALS AND MACHINERY  
WITH ANCILLARY FACILITIES  
FOR A PERIOD OF 3 YEARS

SITE LOCATION

VARIOUS LOTS IN D.D. 129, LAU  
FAU SHAN, YUEN LONG, NEW  
TERRITORIES

SCALE  
1 : 3000 @ A4

DRAWN BY  
MN 7.11.2025

REVISED BY  
DATE

APPROVED BY  
DATE

DWG. TITLE  
LOCATION PLAN

DWG NO.  
PLAN 1

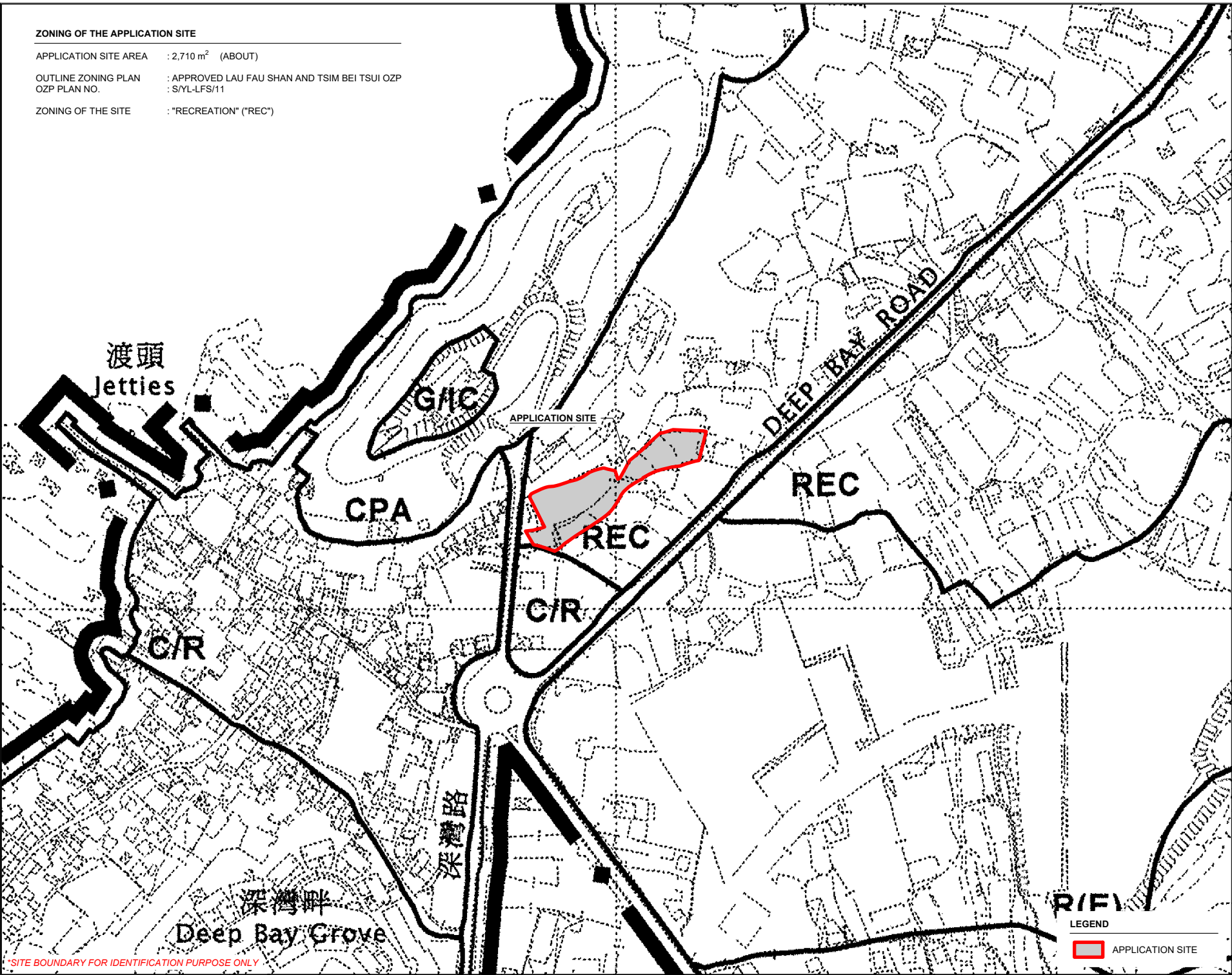
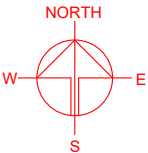
VER.  
001

LEGEND

APPLICATION SITE

ZONING OF THE APPLICATION SITE

APPLICATION SITE AREA : 2,710 m<sup>2</sup> (ABOUT)  
OUTLINE ZONING PLAN : APPROVED LAU FAU SHAN AND TSIM BEI TSUI OZP  
OZP PLAN NO. : S/YL-LFS/11  
ZONING OF THE SITE : "RECREATION" ("REC")



SITE BOUNDARY FOR IDENTIFICATION PURPOSE ONLY

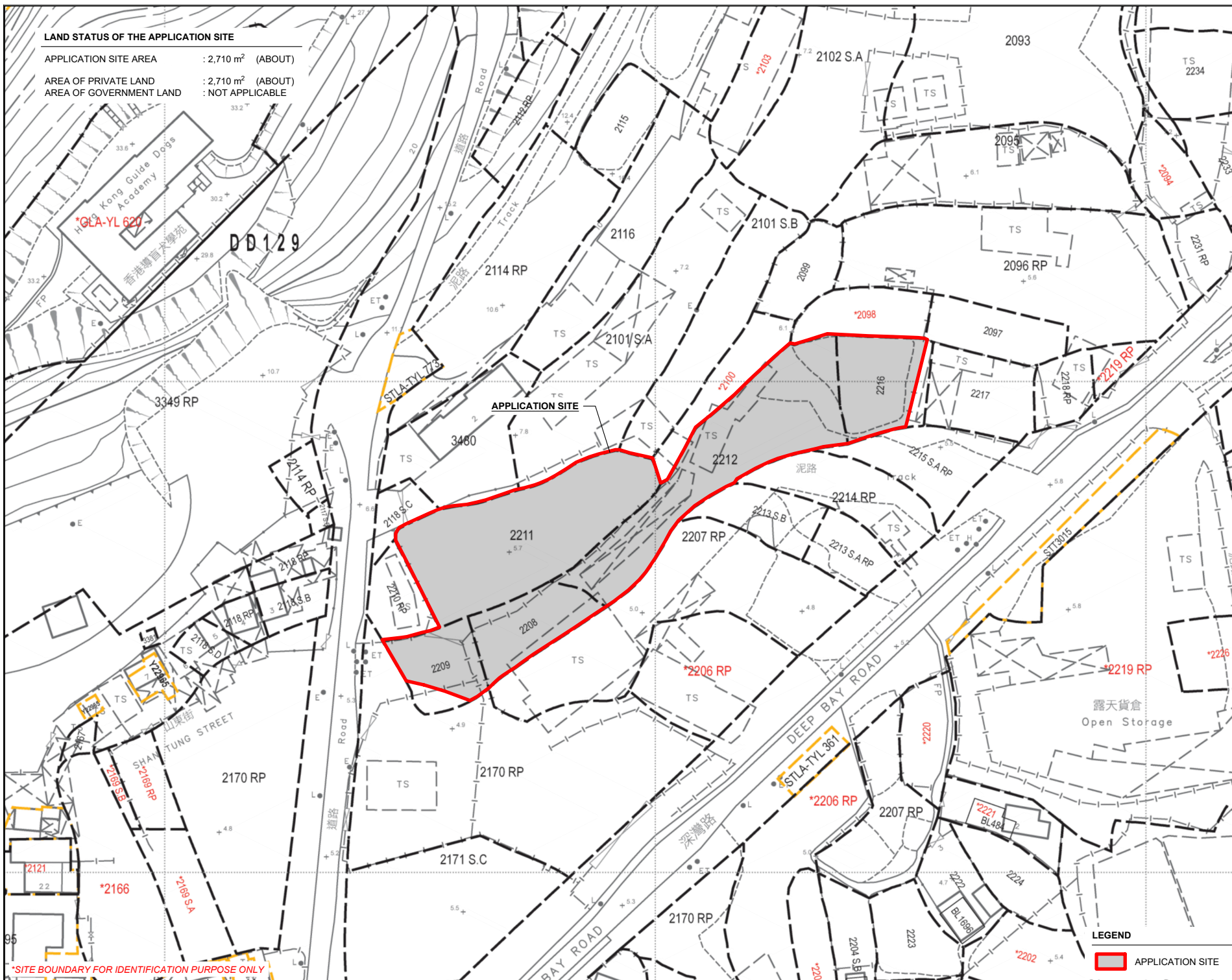
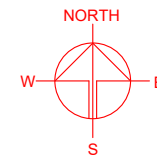
LEGEND  
APPLICATION SITE

PLANNING CONSULTANT	
PROJECT	
PROPOSED TEMPORARY OPEN STORAGE OF CONSTRUCTION MATERIALS AND MACHINERY WITH ANCILLARY FACILITIES FOR A PERIOD OF 3 YEARS	
SITE LOCATION	
VARIOUS LOTS IN D.D. 129, LAU FAU SHAN, YUEN LONG, NEW TERRITORIES	
SCALE	
1 : 3000 @ A4	
DRAWN BY	DATE
MN	7.11.2025
REVISED BY	DATE
APPROVED BY	DATE
DWG. TITLE	
ZONING OF THE SITE	
DWG NO.	VER.
PLAN 2	001



# LAND STATUS OF THE APPLICATION SITE

APPLICATION SITE AREA : 2,710 m<sup>2</sup> (ABOUT)  
 AREA OF PRIVATE LAND : 2,710 m<sup>2</sup> (ABOUT)  
 AREA OF GOVERNMENT LAND : NOT APPLICABLE

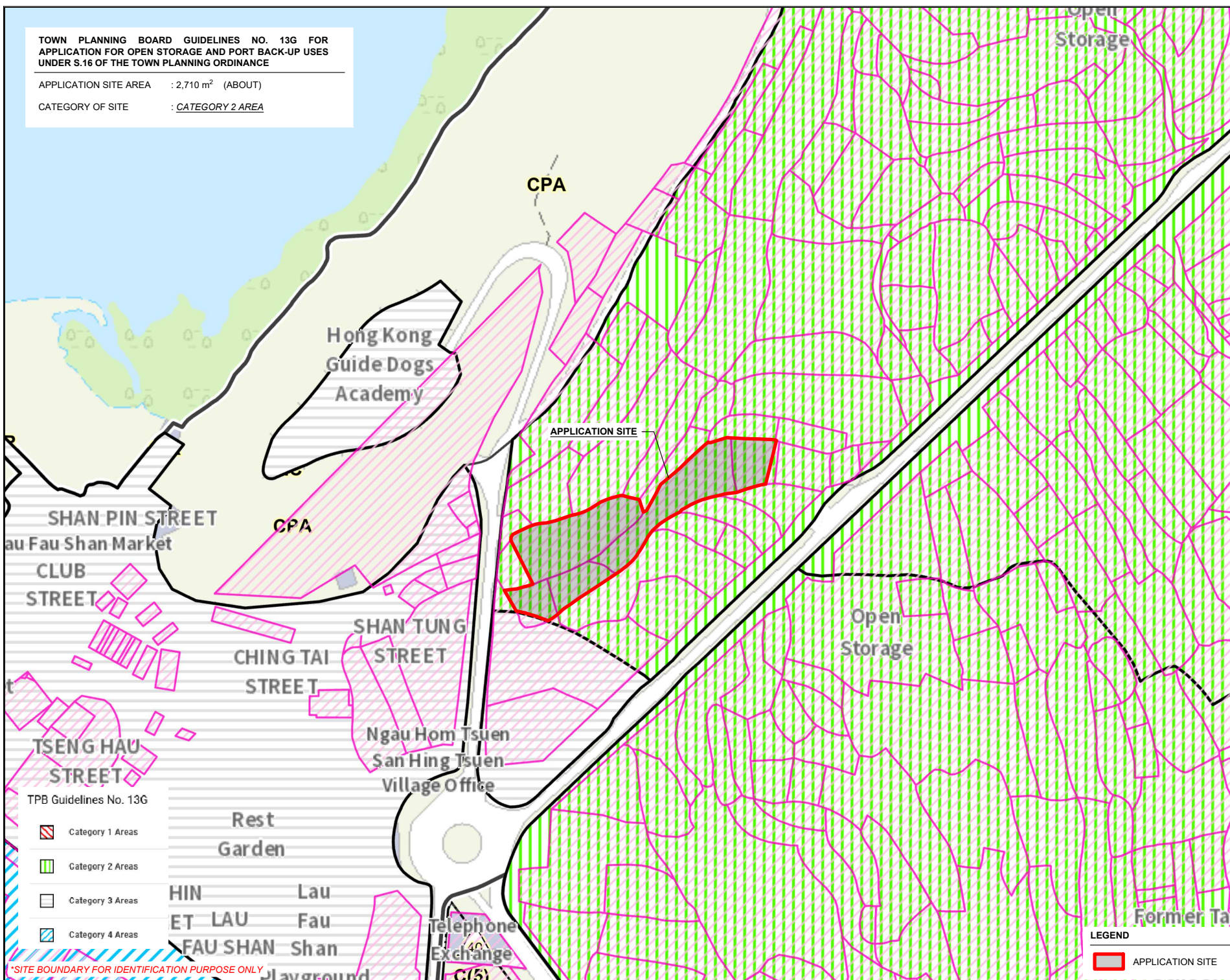
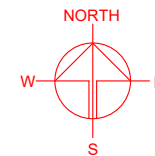




TOWN PLANNING BOARD GUIDELINES NO. 13G FOR  
APPLICATION FOR OPEN STORAGE AND PORT BACK-UP USES  
UNDER S.16 OF THE TOWN PLANNING ORDINANCE

APPLICATION SITE AREA : 2,710 m<sup>2</sup> (ABOUT)

CATEGORY OF SITE : CATEGORY 2 AREA



PLANNING CONSULTANT



PROJECT

PROPOSED TEMPORARY OPEN  
STORAGE OF CONSTRUCTION  
MATERIALS AND MACHINERY  
WITH ANCILLARY FACILITIES  
FOR A PERIOD OF 3 YEARS

SITE LOCATION

VARIOUS LOTS IN D.D. 129, LAU  
FAU SHAN, YUEN LONG, NEW  
TERRITORIES

SCALE  
1 : 2000 @ A4

DRAWN BY  
MN 7.11.2025

REVISED BY  
DATE

APPROVED BY  
DATE

DWG. TITLE  
TPB PG-NO. 13G

DWG NO.  
PLAN 4

VER.  
001

LEGEND

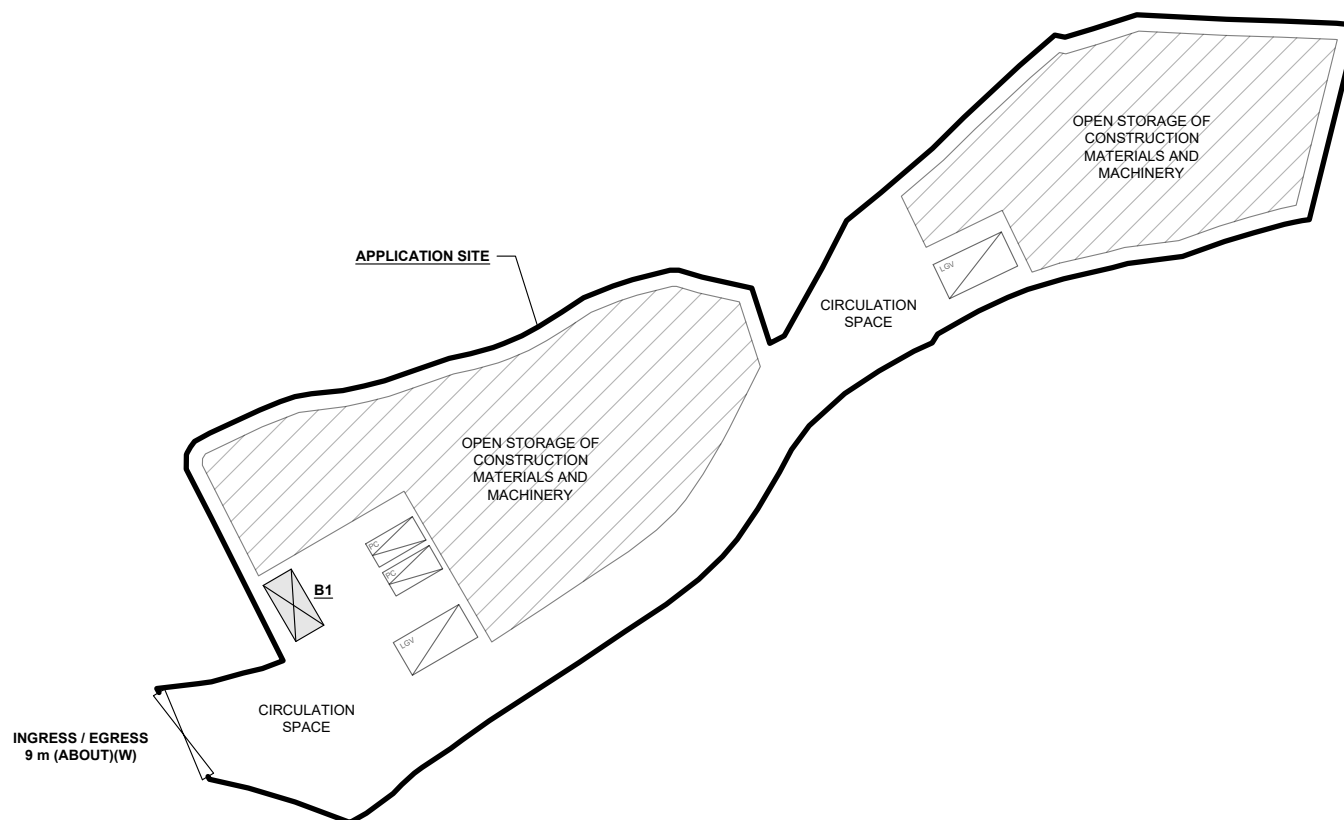
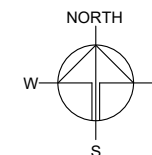
APPLICATION SITE



# DEVELOPMENT PARAMETERS

APPLICATION SITE AREA	: 2,710 m <sup>2</sup>	(ABOUT)
COVERED AREA	: 18 m <sup>2</sup>	(ABOUT)
UNCOVERED AREA	: 2,692 m <sup>2</sup>	(ABOUT)
PLOT RATIO	: 0.01	(ABOUT)
SITE COVERAGE	: 1%	(ABOUT)
NO. OF STRUCTURE	: 1	
DOMESTIC GFA	: NOT APPLICABLE	
NON-DOMESTIC GFA	: 18 m <sup>2</sup>	(ABOUT)
TOTAL GFA	: 18 m <sup>2</sup>	(ABOUT)
BUILDING HEIGHT	: 3 m	(ABOUT)
NO. OF STOREY	: 1	
OPEN STORAGE AREA	: 1,431 m <sup>2</sup>	(ABOUT)
STACKING HEIGHT	: NOT MORE THAN 3 m	

STRUCTURE	USE	COVERED AREA	GROSS FLOOR AREA	BUILDING HEIGHT
B1	GUARDROOM AND SITE OFFICE	18 m <sup>2</sup> (ABOUT)	18 m <sup>2</sup> (ABOUT)	3 m (ABOUT)(1-STOREY)
TOTAL		18 m <sup>2</sup> (ABOUT)	18 m <sup>2</sup> (ABOUT)	



## PARKING AND LOADING / UNLOADING PROVISIONS

NO. OF PRIVATE CAR PARKING SPACE	: 2
DIMENSION OF PARKING SPACE	: 5 m (L) x 2.5 m (W)
NO. OF L/UL SPACE FOR LIGHT GOODS VEHICLE	: 2
DIMENSION OF L/UL SPACE	: 7 m (L) x 3.5 m (W)

\*SITE BOUNDARY FOR IDENTIFICATION PURPOSE ONLY

## LEGEND

	APPLICATION SITE
	STRUCTURE (ENCLOSED)
	OPEN STORAGE AREA
	INGRESS / EGRESS
	PARKING SPACE (PC)
	LOADING / UNLOADING SPACE (LGV)

PLANNING CONSULTANT



PROJECT

PROPOSED TEMPORARY OPEN STORAGE OF CONSTRUCTION MATERIALS AND MACHINERY WITH ANCILLARY FACILITIES FOR A PERIOD OF 3 YEARS

SITE LOCATION

VARIOUS LOTS IN D.D. 129, LAU FAU SHAN, YUEN LONG, NEW TERRITORIES

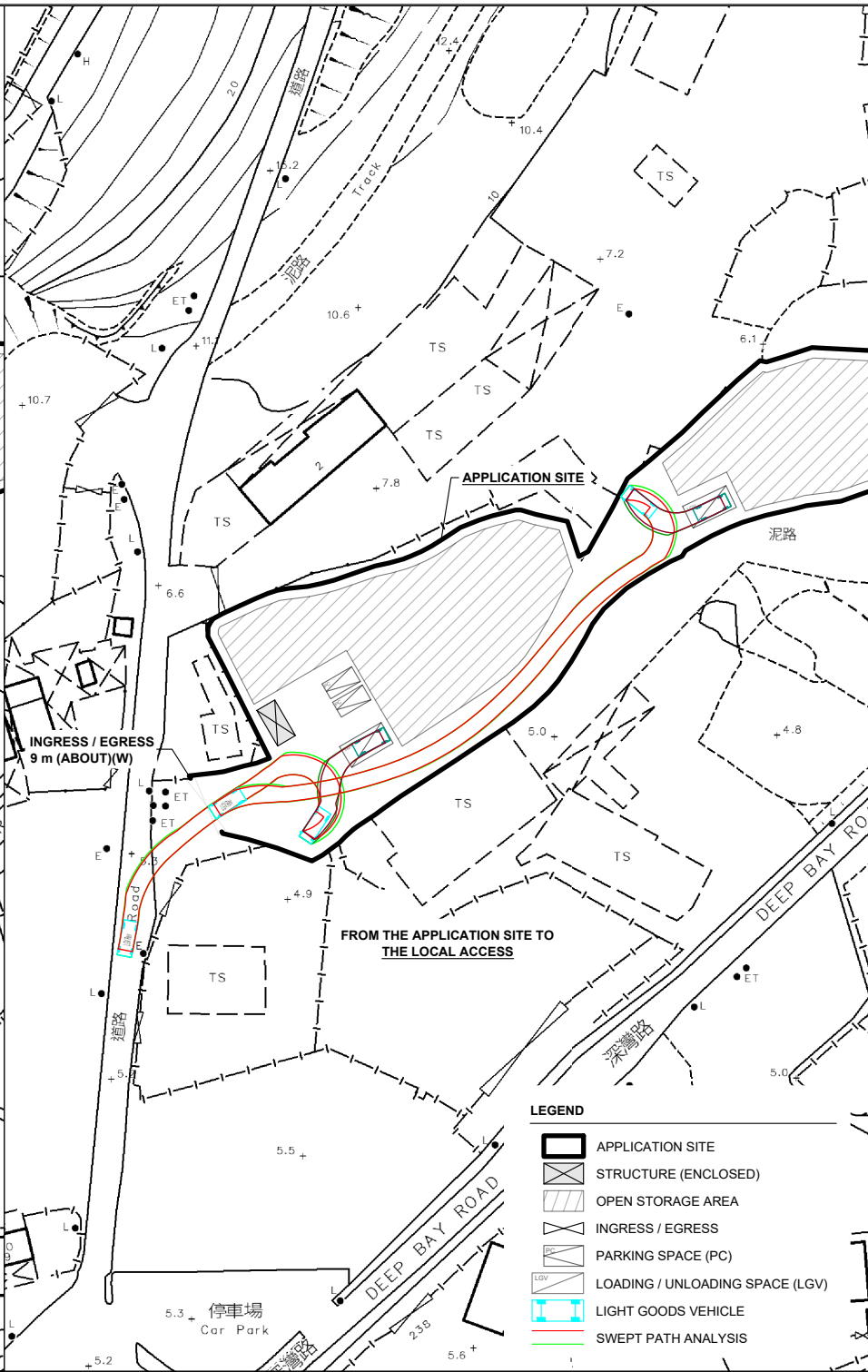
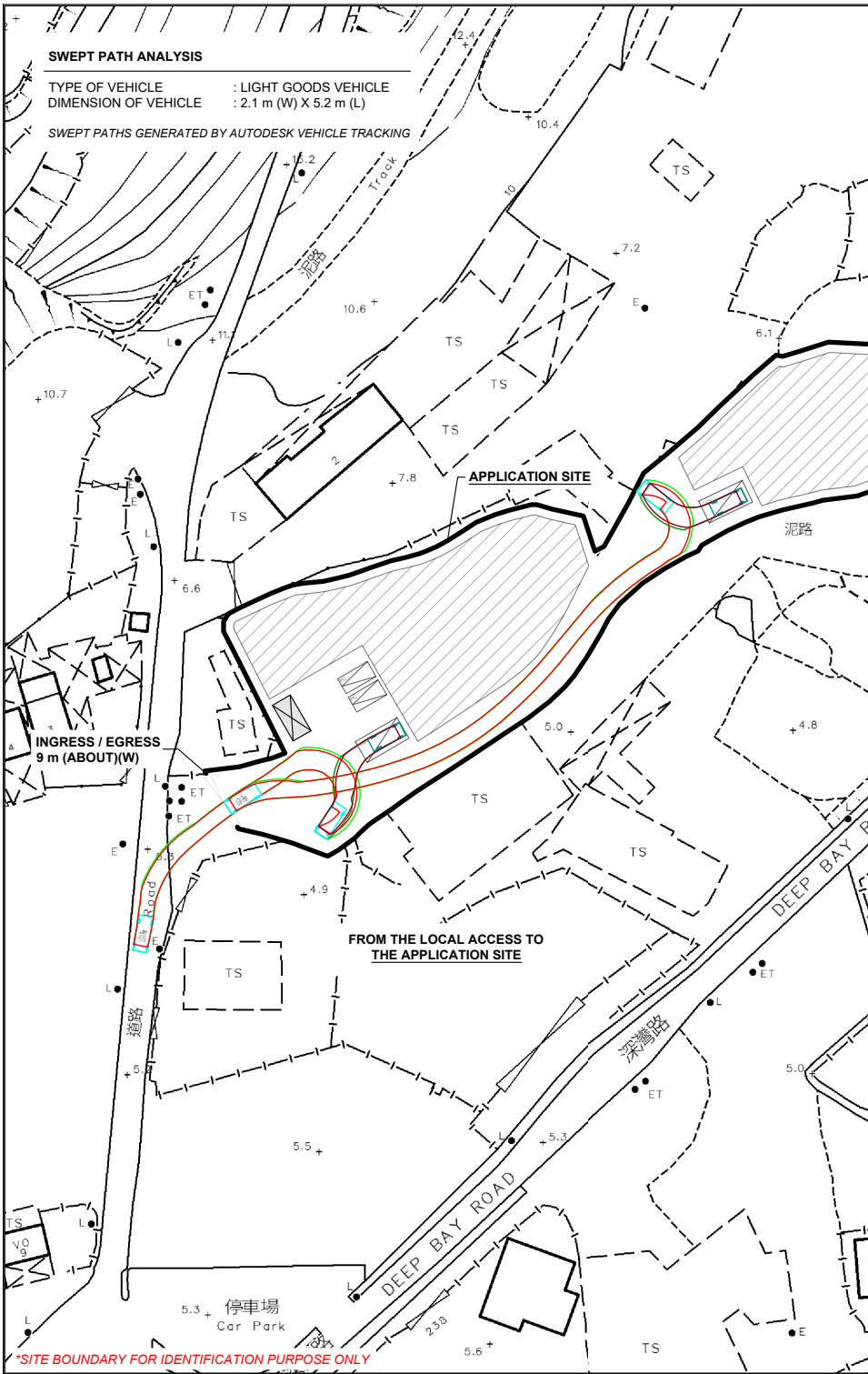
SCALE

1 : 700 @ A4

DRAWN BY	DATE
MN	7.11.2025
REVISED BY	DATE
APPROVED BY	DATE

DWG. TITLE  
LAYOUT PLAN

DWG NO. PLAN 5	VER. 001
-------------------	-------------



**NORTH**

W E  
S

PLANNING CONSULTANT

**R-RICHES**  
IPLANNING LIMITED

PROJECT

PROPOSED TEMPORARY OPEN  
STORAGE OF CONSTRUCTION  
MATERIALS AND MACHINERY  
WITH ANCILLARY FACILITIES  
FOR A PERIOD OF 3 YEARS

SITE LOCATION

VARIOUS LOTS IN D.D. 129, LAU  
FAU SHAN, YUEN LONG, NEW  
TERRITORIES

SCALE  
1 : 1000 @ A4

DRAWN BY  
MN

DATE  
7.11.2025

CHECKED BY

DATE

APPROVED BY

DATE

DWG. TITLE  
SWEPT PATH ANALYSIS

DWG. NO.  
PLAN 6

VER.  
001

- LEGEND**
- APPLICATION SITE
  - STRUCTURE (ENCLOSED)
  - OPEN STORAGE AREA
  - INGRESS / EGRESS
  - PARKING SPACE (PC)
  - LOADING / UNLOADING SPACE (LGV)
  - LIGHT GOODS VEHICLE
  - SWEPT PATH ANALYSIS