

ANTENNA AND EQUIPMENT SCHEDULE (FOR INFORMATION ONLY)

ANTENNA POST NO.	P1		P2		P3	
	A1 (UPPER)	A2 (LOWER)	A3 (UPPER)	A4 (LOWER)	A5 (UPPER)	A6 (LOWER)
ANTENNA NO.						
ANTENNA TYPE	AHP4519R0v06	MICROWAVE	AHP4519R0v06	MICROWAVE	AHP4519R0v06	MICROWAVE
BEARING (DEG)	5°	-°	110°	-°	110°	-°
DOWNTILT (DEG)	8°	-°	2°	-°	2°	-°
ASI4516R1v06 MICROWAVE	SIZE = 399(W)x196(D)x1600(H)mm		WEIGHT = 35kg			
CONCRETE METER KIOSK	SIZE = 1400(W)x1000(D)x2000(H)mm		WEIGHT = 45kg			
APM5930	SIZE = 600(W)x480(D)x1200(H)mm		WEIGHT = 68kg			
S.S. CABINET	SIZE = 1000(W)x400(D)x1000(H)mm		WEIGHT = 100kg			
S.S. CABINET	SIZE = 800(W)x300(D)x1200(H)mm		WEIGHT = 100kg			
RRU	SIZE = 140(W)x356(D)x480(H)mm		WEIGHT = 25kg			
QBC COMBINER	SIZE = 260(W)x53(D)x203(H)mm		WEIGHT = 3kg			
FILTER	SIZE = 182(W)x122(D)x335(H)mm		WEIGHT = 8kg			

MARK SCHEDULE

BEAM MARK	DESIGNATION
T1	∅406.4x16mm THK CHS
T2	∅193.7x10mm THK CHS
T3	∅114.3x6.3mm THK CHS
T4	∅193.7x10mm THK CHS
F1	650mm THK CONCRETE FOOTING
C1-C2	50x50x8mm THK. ∠
C3	70x70x6mm THK. ∠
B1-B2	60x60x5mm THK. SHS
-	120x120x10mm THK. ∠
-	10mm THK. STEEL PLATE

LEGEND

- PROPOSED STEEL WORKS
- PROPOSED CONCRETE WORKS

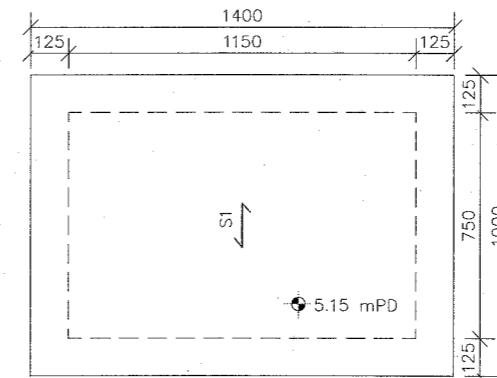
FOOTING SCHEDULE :

TYPE	SIZE(mm)	DESIGN BEARING PRESSURE	ALLOWABLE PRESS.
		W/WIND	W/WIND
F1	6000(L) X 6000(W) X 650(D)	37.4kPa	62.5k
F2	1400(L) X 1000(W) X 100(D)	62.1kPa	62.5k

ANCHOR SCHEDULE

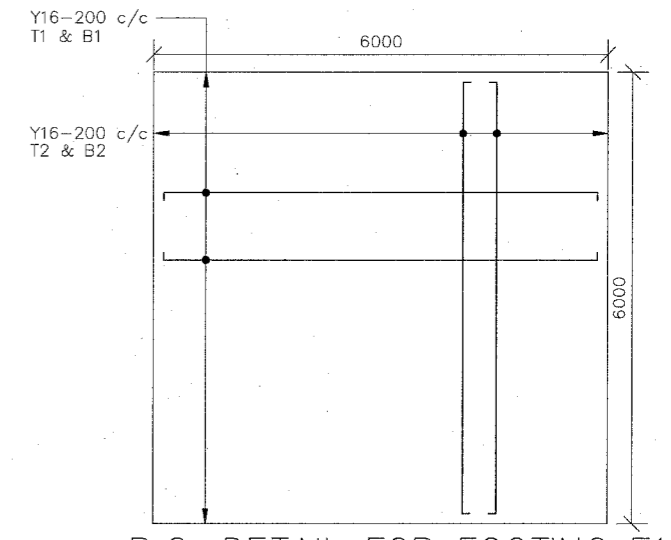
ANCHOR TYPE	RECOMMENDED LOAD,S	TEST LOAD,S x 1.5	EFFECTIVE ANCHORAGE DEPTH (mm)	MIN. BASE MATERIAL THICKNESS (mm)	MIN SPACING (mm)	EDGE DISTANCE (mm)	BD REF
	TENSION (kN)	TENSION (kN)					
HST3-R-M8-47	2.8	4.2	47	100	35	40	BD-AF 151
HST3-R-M12-70	6.7	10.05	70	140	50	55	BD-AF 149

- ALL ANCHOR BOLTS TO BE 'HILTI' TYPE AND TO BE USED AND INSTALLED ACCORDING TO THE MANUFACTURER'S SPECIFICATION.  
% INFLUENCE FACTOR,  $I = (40/25)^{0.5} = 1.26$   
# SHALL BE MEASURED FROM INTACT CONCRETE SURFACE  
\* FOS = 3 HAS BEEN ALLOW FOR CRACKED CONCRETE
- METHOD STATEMENT FOR ANCHOR OR THROUGH BOLT INSTALLATION:  
A. SET OUT AS PER DRAWING ON SURFACE OF EXISTING BUILDING.  
B. LOCATE EXISTING REBAR BY COVER METER.  
C. RE-LOCATE ANCHOR THROUGH BOLT POSITIONS TO AVOID EXISTING REBAR.  
D. INSTALL ANCHOR TO MANUFACTURER'S SPECIFICATIONS.(ANCHOR ONLY)
- EXISTING FINISHES TO BE REMOVED TO EXPOSE SOUND CONCRETE BEFORE INSTALLATION OF ANCHOR BOLT.
- CONCRETE COVER METER TO BE USED FOR AVOID THE DAMAGE ON EXISTING REINFORCEMENT INSIDE THE R.C. SLAB.



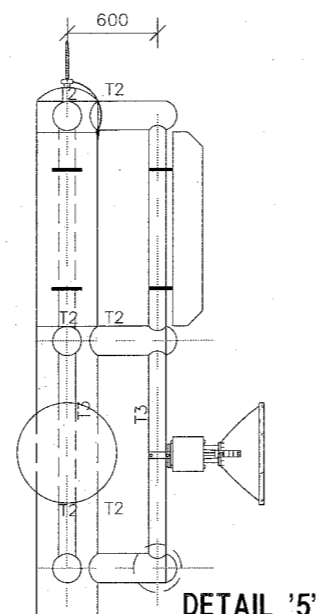
FRAMING PLAN FOR CONCRETE METER KIOSK

1 : 25

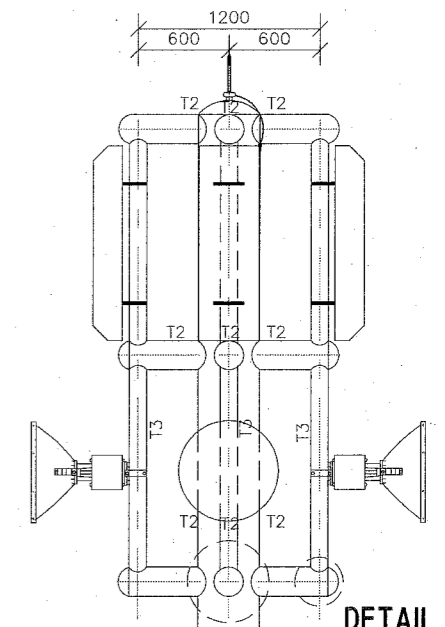
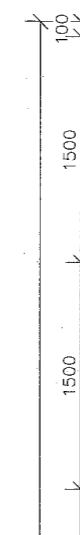


R.C. DETAIL FOR FOOTING F1

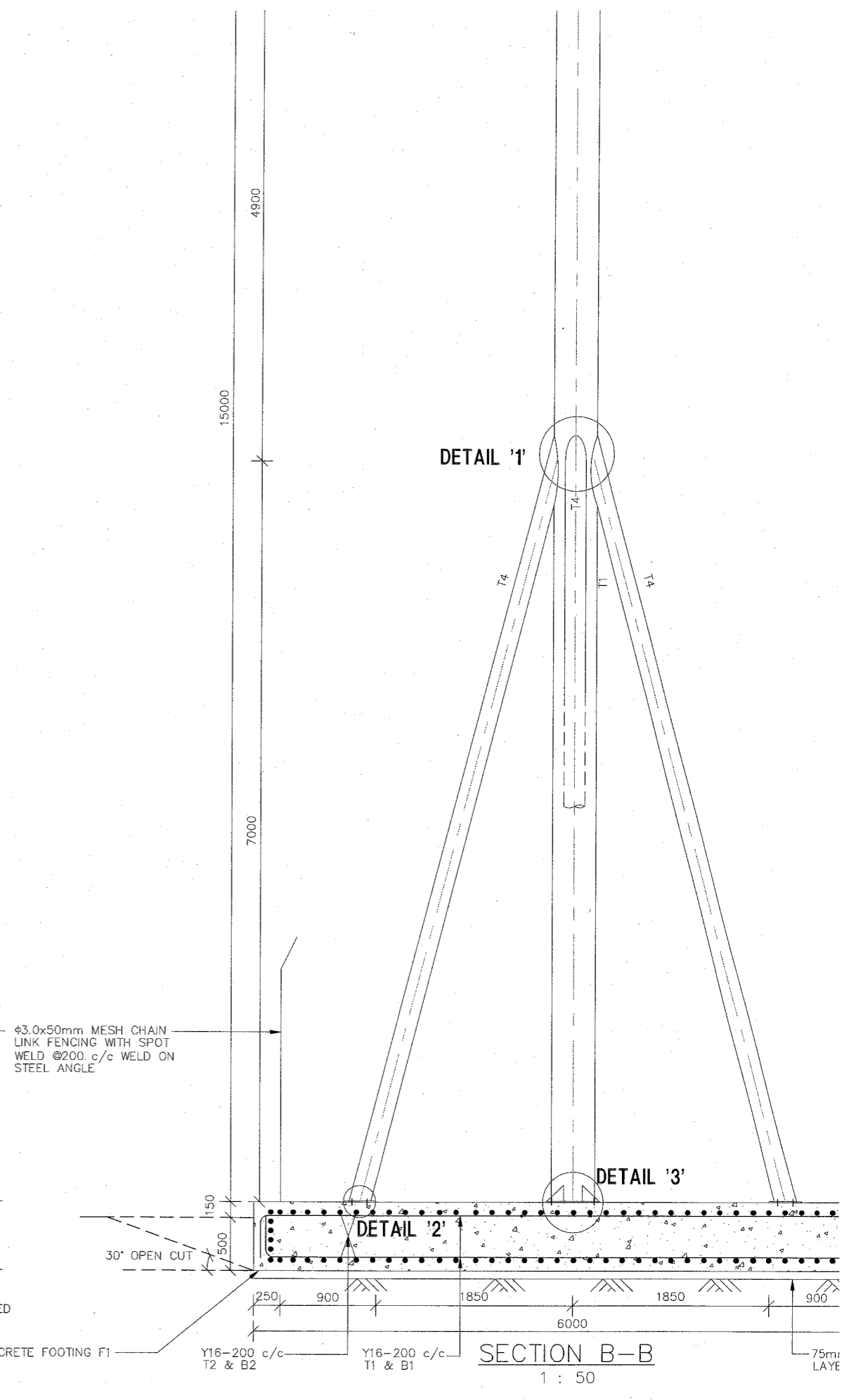
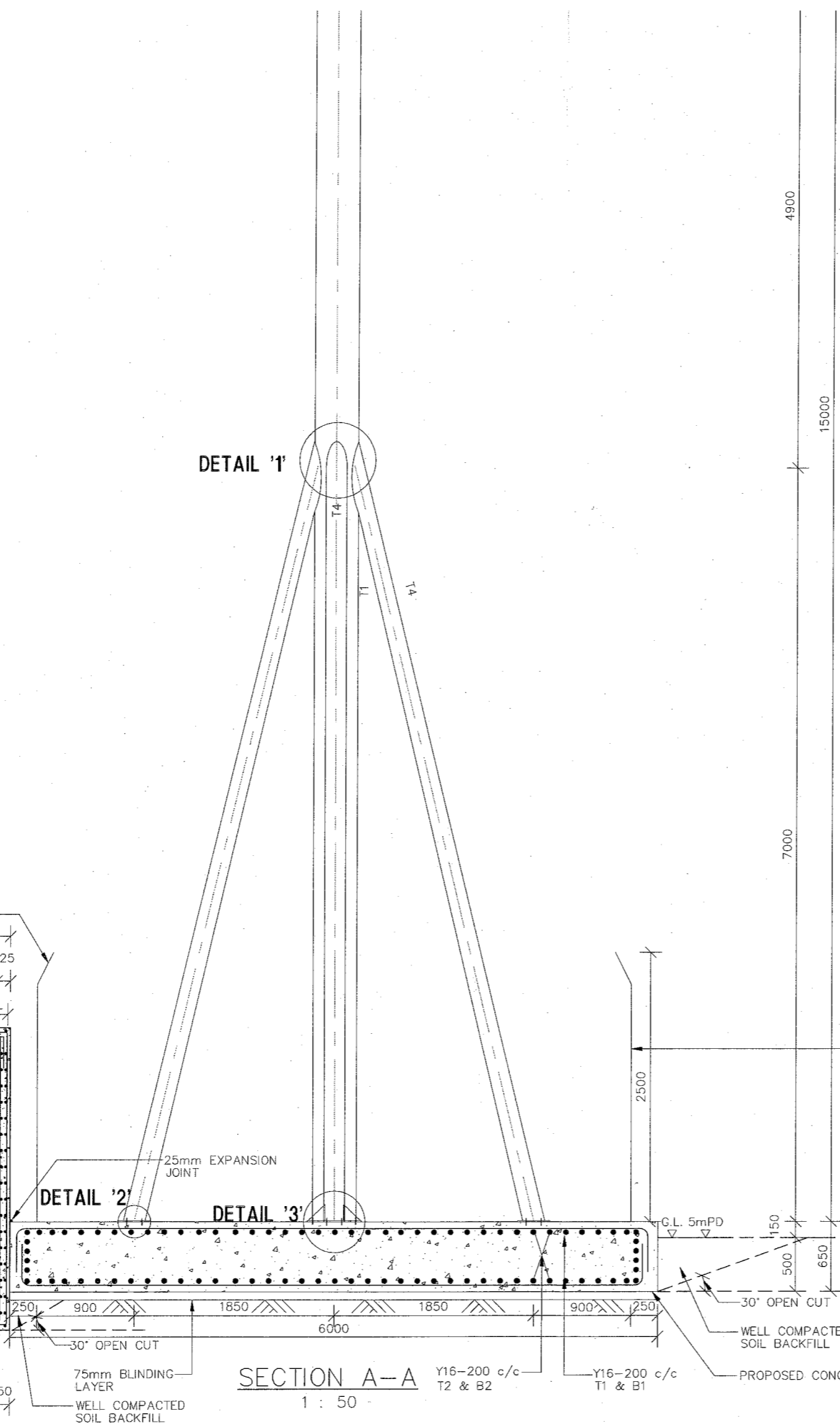
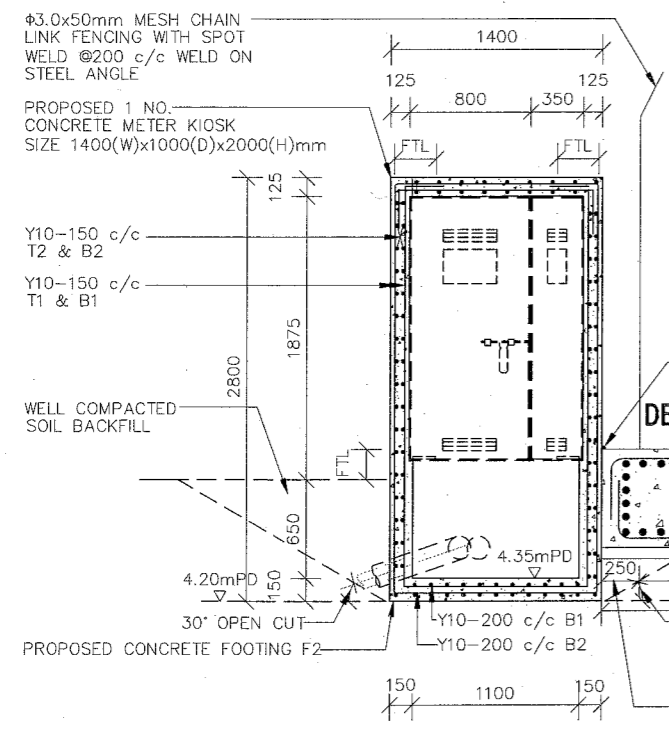
1 : 100



DETAIL '5'



DETAIL '5'



DO NOT SCALE DRAWINGS, VERIFY ALL DIMENSIONS ON SITE.

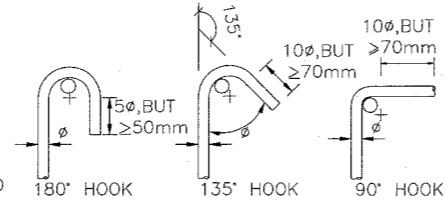
**NOTES FOR NEW R.C. WORKS:**

- ALL CONCRETE WORKS DESIGN IN ACCORDANCE WITH THE CODE OF PRACTICE FOR THE STRUCTURAL USE OF CONCRETE 2013.
- ALL CONCRETE USED TO BE DESIGNED MIXED 40D/20 AGGREGATE TO COMPLY WITH CSI:2010.
- THE MINIMUM CHARACTERISTIC STRENGTH FOR GRADE C40 CONCRETE TO BE 40N/mm<sup>2</sup>(FCU).
- CONCRETE COVER TO MAIN REINFORCEMENT TO BE 75mm FOR FOOTING.
- ALL REINFORCEMENT DENOTED BY MARK 'Y' INDICATES HIGH TENSILE DEFORMED BARS TO BE GRADE 500B TO COMPLY WITH CS2:2012 WITH CHARACTERISTIC STRENGTH OF 500 mPa.
- BAR MARKS INDICATE THE TYPE AND SIZE OF REINFORCEMENT e.g. T12-300
- ANCHORAGE OF LINKS REQUIREMENTS TO BE :-

**LAP LENGTHS TABLE**

CONCRETE GRADE	TYPE OF LAP LENGTH	REINFORCEMENT TYPES
		fy 500 N/mm <sup>2</sup> RIBBED
40	TENSION AND COMPRESSION LAP LENGTH-LO 1.4 X TENSION LAP 2.0 X TENSION LAP	35
		49
		70

ULTIMATE LAP LENGTHS AS MULTIPLES OF BAR DIAMETER.



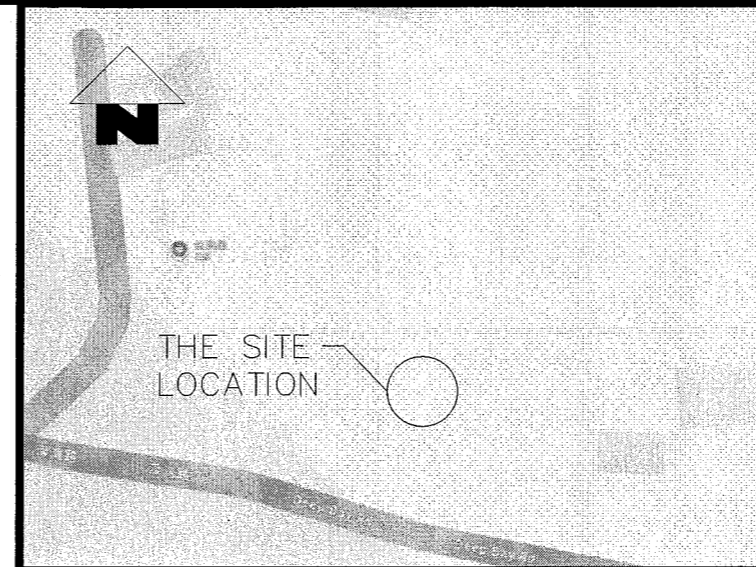
T	10	-100
HIGH TENSILE STEEL	10mm BAR DIAMETER	BAR SPACING

- THE REACTIVE ALKALI OF CONCRETE EXPRESSED AS THE EQUIVALENT SODIUM OXIDE PER CUBIC METRE OF CONCRETE SHALL NOT EXCEED 3.0KG. TESTS FOR CALCULATION OF THE REACTIVE ALKALI OF CONCRETE TO BE CARRIED OUT BY LABORATORY UNDER HOKLAS TO PNPAP APP74.
- THE USE OF PFA AS A PARTIAL REPLACEMENT FOR ORDINARY PORTLAND CEMENT (OPC) IN CONCRETE SHALL COMPLY WITH PNPAP APP-33. THE PFA CONTENT SHALL NOT EXCEED 25% BY MASS OF THE CEMENTITIOUS CONTENT (OPC PLUS PFA) OF THE CONCRETE.

**RESPONSE ACTION FOR ALERT, ALARM & ACTION LEVEL**

- ALERT LEVEL:**
  - RC TO NOTIFY AND SUBMIT WRITTEN REPORT TO RSE/RGE.
  - RSE/RGE TO ACCESS EFFECT OF MOVEMENTS AND PREDICT FUTURE MOVEMENTS.
  - RSE/RGE TO AGREE WITH RC ON THE SUITABLE ACTION PLAN WHICH MAY INCLUDE THE INSTALLATION OF ADDITIONAL CHECK POINTS AND/OR INCREASING MONITORING FREQUENCY, AND THE REMEDIAL/MITIGATING MEASURES TO BE TAKEN UPON REACHING THE 'ALARM LEVEL'.
- ALARM LEVEL:**
  - RC TO NOTIFY AND SUBMIT UPDATE REPORT TO RSE/RGE AND TO NOTIFY THE BD AND RELEVANT PARTIES IMMEDIATELY.
  - RSE/RGE AND RC TO CONDUCT JOINT SITE INSPECTION TO DETERMINE IF ANY CONSTRUCTION ACTIVITIES SHOULD BE TEMPORARILY SUSPENDED.
  - RE TO IMPLEMENT THE NECESSARY REMEDIAL/MITIGATING MEASURES IN ACCORDANCE WITH THE AGREED ACTION PLAN.
  - RSE/RGE AND RC TO DISCUSS THE INSTRUMENT RESPONSE AND REVIEW THE EFFECTIVENESS OF THE RESPONSE ACTION.
  - RSE/RGE TO AGREE WITH RC ON THE EMERGENCY PLAN DETAILING THE MEASURES TO BE TAKEN UPON REACHING 'ACTION LEVEL'.
  - ANY CONSTRUCTION ACTIVITIES MAY BE SUSPENDED IF THE RESPONSE ACTION HAS BEEN IMPLEMENTED AND ON THE ADVICE OF RSE/RGE AS NECESSARY.
  - RSE/RGE TO REVIEW THE METHOD STATEMENTS OF FOUNDATION WORKS TO DETERMINE WHETHER MODIFICATION TO THE CONSTRUCTION METHODS IS REQUIRED TO PREVENT 'ACTION LEVEL' FROM BEING REACHED.
- ACTION LEVEL:**
  - ALL WORK THAT WILL CAUSE GROUND MOVEMENT ARE TO BE CEASED.
  - RC TO NOTIFY AND CARRY OUT A JOINT SITE INSPECTION WITH THE RSE/RGE IMMEDIATELY. THE BD, GEO AND THE RELEVANT PARTIES SHOULD BE NOTIFIED IMMEDIATELY.
  - RC TO IMPLEMENT THE NECESSARY EMERGENCY MEASURES IN ACCORDANCE WITH THE AGREED EMERGENCY PLAN.
  - RC TO SUBMIT AN INCIDENT REPORT TO RSE/RGE AND THE BD DETAILING THE FULL HISTORY OF THE MOVEMENTS AND REMEDIAL/EMERGENCY MEASURE IMPLEMENTED.
  - RSE/RGE TO REVIEW THE INCIDENT AND AGREE WITH RC ON FURTHER REMEDIAL AND PREVENTIVE MEASURES TO ENABLE RESUMPTION OF SUSPENDED WORKS.
  - CONSTRUCTION ACTIVITIES SHOULD NOT BE RESUMED UNTIL THE NECESSARY REMEDIAL AND PREVENTIVE MEASURES HAVE BEEN COMPLETED TO THE SATISFACTION OF THE BD.
  - IF THE TRIGGER VALUES AND RESPONSE ACTION ARE REVISED, THE AMENDED PLANS SHOULD BE SUBMITTED TO THE BD FOR APPROVAL. THE SUSPENDED CONSTRUCTION ACTIVITIES SHOULD NOT BE RESUMED UNTIL THE AMENDED PLANS ARE APPROVED BY THE BA AND THE CONSENT IS GIVEN.
- THE 'ACTION LEVEL' RESPONSE SHOULD BE TAKEN IF ANY OF THE FOLLOWING SITUATION OCCURS:
  - UNDUE SETTLEMENT AS INDICATED IN ANY CHECK POINTS (e.g. AN INCREASE OF 5mm BETWEEN TWO CONSECUTIVE DAILY READINGS.)
  - SIGN OF DISTRESS OR DAMAGES OBSERVED IN ANY ADJACENT STRUCTURES AND/OR UTILITIES.
- THE CONTROL CRITERIA AREA IN FOLLOWS :

ALERT LIMIT | ALARM LIMIT | ACTION LIMIT



**BLOCK PLAN**

**NOTES FOR COMPACTED FILL**

- ALL SOIL FILL SHOULD BE COMPACTED TO AT LEAST 95% OF MAXIMUM DRY DENSITY.
- THE SURFACE OVER WHICH FILLING IS TO BE PLACED SHALL BE CLEARED OF ALL ORGANIC TOP SOIL. THE PREPARED SURFACE SHALL BE APPROVED BY THE ENGINEER PRIOR TO THE PLACING OF FILL.
- FILL MATERIAL SHALL BE SUITABLE MATERIAL AS DEFINED IN "GENERAL SPECIFICATION FOR CIVIL ENGINEERING WORKS" BY HONG KONG GOVERNMENT, OR OTHERWISE SPECIFIED BY THE ENGINEER, AND COMPACTED TO 95% THE MAXIMUM DRY DENSITY.
- FILLING SHOULD BE CARRIED OUT IN HORIZONTAL LAYERS OF NOT EXCEEDING 225mm THICK, WELL RAMMED AND CONSOLIDATED, AND SHALL REFER TO CEED STANDARD DETAIL (DRAWING NO. C2301A: BENCHING DETAILS).
- FOR FILLING SLOPES THE CONTRACTOR SHALL BE OVERFILLED BEYOND THE SLOPE PROFILE, THEN CUT AND TRIM BACK TO THE DESIGN PROFILE WHEN COMPACTION HAS COMPLETED. THE EXTEND OF OVERFILL SHALL NOT BE LESS THAN 500mm AND SHALL BE WELL COMPACTED.
- IN-SITU FIELD DENSITY TEST SHALL BE PERFORMED IN ACCORDANCE WITH GEOSPEC 3 TO DETERMINE THE DEGREE OF COMPACTION ACHIEVED. TEST FREQUENCY SHALL REFER TO TABLE BELOW.

SIZE OF AREA OF FILL IN BATCH *	NO. OF DETERMINATIONS PER BATCH *
0-100 m <sup>2</sup>	3
100-500 m <sup>2</sup>	2 FOR EACH 100m <sup>2</sup> OR PART THEREOF
EXCEEDING 500m <sup>2</sup>	1 FOR EACH 100m <sup>2</sup> OR PART THEREOF

- \* A BATCH OF FILL MATERIAL IS ANY QUANTITY OF FILL MATERIAL OF THE SAME TYPE AND HAS SIMILAR PROPERTIES THROUGHOUT.
- THE MAXIMUM DRY DENSITY AND OPTIMUM MOISTURE CONTENT SHALL BE DETERMINED IN ACCORDANCE WITH GEOSPEC 3 EACH SOIL TYPE SHALL BE TESTED WHEN FIRST USED.
  - ALL SOIL TESTING RESULT SHALL BE ISSUED ON HOKLAS ENDORSED TEST CERTIFICATE OR REPORT.
  - COMPACTION RECORDS SHALL BE SUBMITTED TO THE AP / RSE AND TO BD PRIOR TO FORM BA14 SUBMISSION.
  - ALL FILL COMPACTION SHALL BE CARRIED OUT IN ACCORDANCE WITH PNPAP-APP-15 (PNAP55).

**MASTER SEQUENCE**

- FENCE OFF THE PROPOSED WORKING AREA.
- EXCAVATE THE SOIL INDICATED IN DRAWING.
- POUR A BLINDING LAYER.
- BENT AND CUT THE REBAR.
- FIX THE REBAR.
- FORM THE FORMWORK.
- CLEAN AND THOROUGHLY WET THE INTERIOR OF THE FORMWORK.
- LOCATE AND FIX THE POSITION OF CAST-IN BOLTS.
- POUR THE CONCRETE INTO THE FORMWORK.
- VIBRATE THE CONCRETE TO DISTRIBUTE HEAPED CONCRETE INTO POSITION.
- BEFORE PROPRIETARY ANCHOR BOLTS TO BE INSTALLED AT FRESHLY CAST CONCRETE PLINTH, THE CONTRACTOR SHOULD BE VERIFIED THE STRENGTH OF CONCRETE IS NOT LESS THAN 40mPa.
- ERECT STEEL POST, INSTALL EQUIPMENT AND STEEL FENCE.
- MAKE GOOD OF THE FOOTING.

**GENERAL NOTES :**

- THIS DRAWING SHOULD BE READ IN CONJUNCTION WITH DRAWING S3497-2
- ALL DIMENSIONS SHOWN ARE IN mm AND ALL LEVELS ARE IN mpd.
- ALL DIMENSIONS ARE TO BE VERIFIED ON SITE.
- ALL WORKS ARE DESIGNED IN ACCORDANCE WITH
  - HONG KONG BUILDING. ( CONSTRUCTION ) REGULATION
  - CODE OF PRACTICE ON WIND EFFECTS IN HONG KONG 2019
  - CODE OF PRACTICE FOR THE STRUCTURAL USE OF STEEL 2011
  - CODE OF PRACTICE FOR DEAD AND IMPOSED LOADS 2011
  - CODE OF PRACTICE FOR STRUCTURAL OF CONCRETE 2013
  - CODE OF PRACTICE FOR FIRE SAFETY IN BUILDINGS 2011
- DESIGN LOAD:
  - IMPOSED LOAD: 3kPa ON FOOTING
  - DEAD LOAD : STEEL = 78.5KN/m<sup>3</sup>  
MASS CONCRETE DENSITY = 24.5KN/m<sup>3</sup>
  - TEMPERATURE LOAD (TEMPERATURE DURING INSTALLATION IS 25°)  
TEMPERATURE=+20°C(FOR INTERNAL TEMPERATURE SHOULD BE 5-35° FOR ROOF WATER TANK)  
TEMPERATURE=+35°C(SURFACE EXPOSED OUTSIDE AND UNDER SUNLIGHT SHOULD BE CONSIDERED FOR A TEMPERATURE OF 0-60°C FOR ANTENNA POST)
  - WIND LOAD
    - BASIC WIND PRESSURE = 1.82kPa FOR H<16m
    - S<sub>g</sub>=0.85, S<sub>t</sub>=1.0, C<sub>p</sub>=2, S<sub>s</sub>=1.0
- BIMETALLIC : ALL CONNECT BETWEEN DIFFERENT METALS SHALL BE SEPARATED BY PVC SHIM OR BITUMINOUS PAINTS.
- ALLOWABLE SOIL (NON-COHESIVE SOIL) BEARING = 50kPa WITH WIND CASE; 62.5kPa WITH WIND CASE
- DESIGN GROUND WATER LEVEL = HIGHEST ANTICIPATED GROUNDWATER LEVEL
- DESIGN SOIL PARAMETERS ARE ASSUME AS BELOW:

SOIL TYPE	DESIGN PARAMETERS		
	UNIT WEIGHT, γ (kN/m <sup>3</sup> )	EFFECTIVE COHESION, c' (kPa)	EFFECTIVE FRICTION ANGLE, φ (Deg.)
COMPLETELY DECOMPOSED TUFF	19	5	34

**FSD NOTES:**

- NO STORAGE OF DANGEROUS GOOD WITHOUT THE AUTHORITY OF THE DIRECTOR OF FIRE SERVICES.

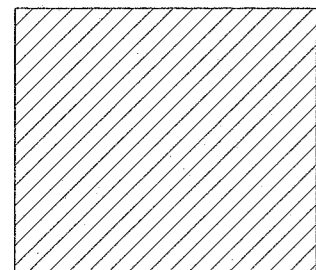
**NOTES FOR STEEL WORKS:**

- ALL STRUCTURAL STEEL TO BE CLASS 1 GRADE S275J0 TO BS EN 10025:2019 FOR HOT ROLLED SECTION AND BS EN 10210-1 : 2006 FOR HOT-FINISHED HOLLOW SECTIONS. THE NOMINAL DESIGN STRENGTH TO BE 275 N/mm<sup>2</sup>(THICKNESS < 16mm)
- ALL STRUCTURAL STEEL TO BE HOT DIP GALVANIZED TO BS EN ISO 1461:2022. MIN. DRY FILM THICKNESS OF 85 μm.
- ALL WELDING ARE TO BE FILLET WELD ALL ROUND TO BS EN 1011 PART 1:2009, PART 2:2001, EXCEPT WHERE FILLET WELD IS NOT FEASIBLE, SINGLE 'V' & BEVEL BUTT WELD SHALL BE USED INSTEAD.
- ALL WELDING TO BE 5mm FILLET WELD ALL ROUND UNLESS OTHERWISE STATED.
- ALL WELDING SHALL BE IN ACCORDANCE WITH REQUIREMENT AS PER BS EN 1011 PART 1:2009 & PART 2:2001(MIN. STRENGTH=220N/mm<sup>2</sup>)
- WELDING CONSUMABLES TO BE COMPLY WITH BS EN ISO 2560:2020 (GRADE E35)
- SPECIFICATION AND QUALIFICATION OF WELDING PROCEDURES SHOULD COMPLY WITH BS EN ISO 15614 PART 1: 2017 & PART 8 : 2016
- QUALIFICATION TEST OF WELDERS, FUSION WELDING STEELS SHOULD COMPLY WITH BS EN 287 PART 1 : 2011
- ALL SITE WELD CONNECTIONS WHICH DAMAGED THE EXISTING GALVANIZED COAT SHALL BE APPLIED WITH TWO LAYERS OF APPROVED ZINC-RICH PRIMER. THE DAMAGED SURFACE SHOULD BE PROVIDED BY ZINC-RICH PRIMING PAINT TO COMPLY WITH BS 4652:1995.
- ALL GRADE 8.8 BOLTS AND NUTS SHOULD COMPLY WITH BS 4190:2001. (SHEAR STRENGTH, P<sub>s</sub> = 375N/mm<sup>2</sup>; TENSILE STRENGTH, P<sub>t</sub>=560N/mm<sup>2</sup>)
- DESIGN STRENGTH OF STAINLESS STEEL BOLT & NUTS. (GRADE A4-70) TO BS EN ISO 3506 PART 1 & PART 2:2020. SHEAR STRENGTH = 311N/mm<sup>2</sup> ; TENSION STRENGTH = 450N/mm<sup>2</sup> BEARING STRENGTH = 828N/mm<sup>2</sup>
- ALL CAST-IN BOLTS AND NUTS TO BE GRADE 8.8 COMPLYING WITH BS 4190:2001. (SHEAR STRENGTH, P<sub>s</sub> = 375N/mm<sup>2</sup> ;TENSILE STRENGTH, P<sub>s</sub> = 560N/mm<sup>2</sup>)

**THE PROTECTION OF EARTHWORKS AGAINST HEAVY RAINFALL**

- SURFACE WATER FLOWING INTO THE SITE FROM ADJACENT SITES SHALL BE INTERCEPTED AND CONDUCTED FROM THE SITE TO AN INDICATED SAFE POINT. AT EACH INTERSECTION AND ABRUPT CHANGE IN DIRECTION OF SURFACE DRAINAGE CHANNELS AN ACCESSIBLE CATCHPIT SHALL BE PROVIDED. ALL DRAINAGE WORKS SHALL BE KEPT CLEAR OF DEBRIS.
- WHERE PARTIALLY COMPLETED DRAINAGE WORKS DISCHARGE WITHIN THE SITE. A TEMPORARY CONDUIT SHALL BE PROVIDED TO THE

FOUNDING MATERIAL	TOP LEVEL	TENTATIVE FOUNDING LEVEL
COMPLETELY DECOMPOSED TUFF	+5.15 m.P.D.	+5 m.P.D.
COMPLETELY DECOMPOSED TUFF	+4.35 m.P.D.	+4.2 m.P.D.



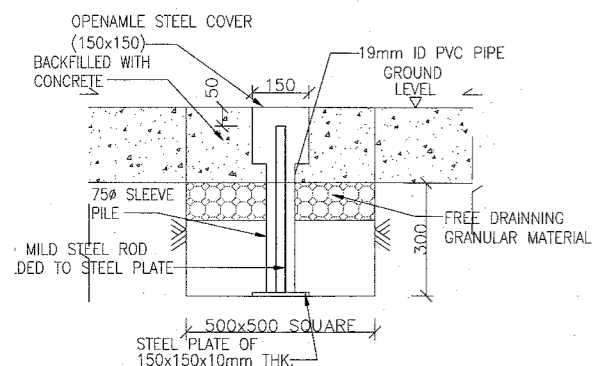
**LOADING KEY PLAN**

1 : 200

**LOADING SCHEDULE**

AREA	LIVE LOAD
	3 kPa

INCLUDING LOADING OF EQUIPMENT

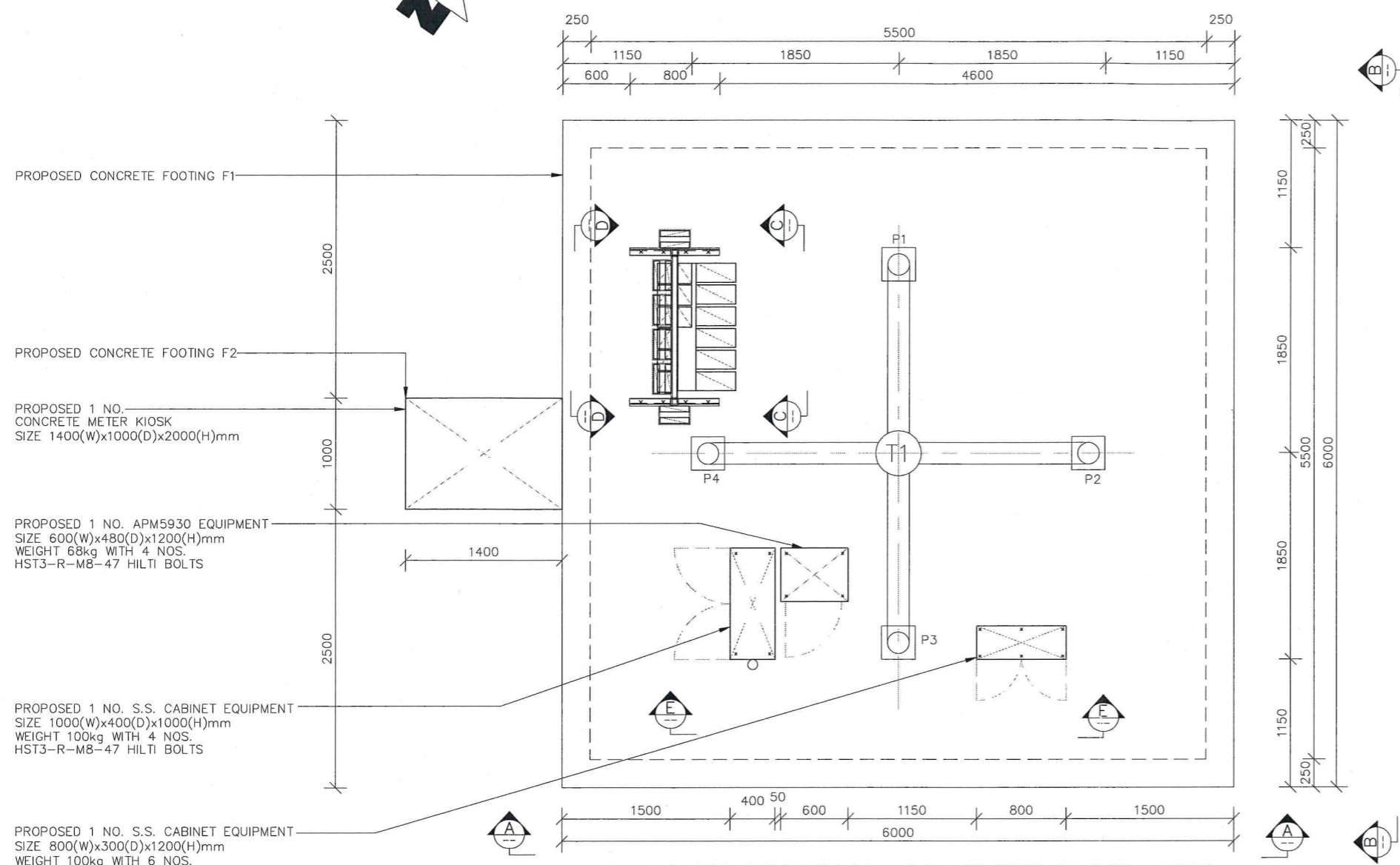


**TAIL OF SETTLEMENT CHECK POINTS**

(GS01~GS02)

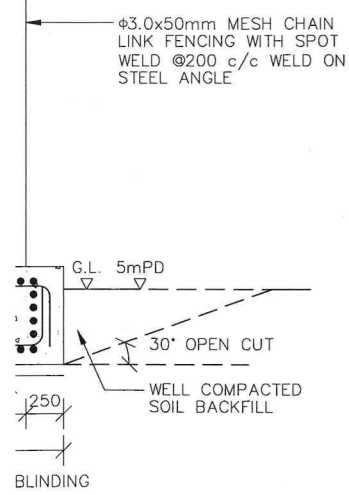
1 : 20

4. A METHOD OF WORKING SHALL BE ADOPTED IN WHICH THE MINIMUM OF BARE SOIL IS EXPOSED AT ANY TIME EARTHWORK TO FORM THE FINAL FACE SHALL BE FOLLOWED UP IMMEDIATELY WITH SURFACE PROTECTION AND DRAINAGE WORKS AND THE FACE PANEL SIZE SHALL BE ENOUGH TO PERMIT THIS.
5. WHERE TEMPORARY BARE EARTH SLOPE FACES ARE UNAVOIDABLE THEY SHALL BE PROTECTED WITH SHEETING WELL-SECURED AGAINST THE WIND. WHERE SLOPE FACES ARE TO BE TEMPORARILY EXPOSED FOR MORE THAN TWO WEEKS TEMPORARY HARD SURFACING SUCH AS CHUNAM RENDERING SHALL BE PROVIDED AND TEMPORARY DRAINS SHALL BE INSTALLED.
6. IF TRENCHES ON OR ADJACENT TO SLOPE HAVE TO BE EXCAVATED DURING THE WET SEASONS THIS SHALL BE DONE WITH EXTREME CARE IN SHORT SECTIONS AT A TIME. PRECAUTIONS SHALL ALWAYS BE TAKEN TO PREVENT WATER ENTERING AND COLLECTING IN THE TRENCH.



- PROPOSED CONCRETE FOOTING F1
- PROPOSED CONCRETE FOOTING F2
- PROPOSED 1 NO. CONCRETE METER KIOSK  
SIZE 1400(W)x1000(D)x2000(H)mm
- PROPOSED 1 NO. APM5930 EQUIPMENT  
SIZE 600(W)x480(D)x1200(H)mm  
WEIGHT 68kg WITH 4 NOS.  
HST3-R-M8-47 HILTI BOLTS
- PROPOSED 1 NO. S.S. CABINET EQUIPMENT  
SIZE 1000(W)x400(D)x1000(H)mm  
WEIGHT 100kg WITH 4 NOS.  
HST3-R-M8-47 HILTI BOLTS
- PROPOSED 1 NO. S.S. CABINET EQUIPMENT  
SIZE 800(W)x300(D)x1200(H)mm  
WEIGHT 100kg WITH 6 NOS.  
HST3-R-M8-47 HILTI BOLTS

PLAN OF PROPOSED CONCRETE PLINTH FOR  
BTS EQUIPMENT AND ANTENNA POSTS P1 TO P3  
1 : 50



REV	DESCRIPTION	DATE	BY	CHK'D	APP
-----	-------------	------	----	-------	-----

**創域工程有限公司**  
**JEG Engineering Co. Ltd.**  
1/F, Blk E, Cheong Fat Factory Bldg., 346 Fuk Wing St., Cheung Sha Wan, Kln.  
TEL : 2117 9500 FAX : 3103 8077 E-MAIL : jeg@jeg-ltd.com

CLIENT :



**CHINA MOBILE  
HONG KONG  
COMPANY LIMITED**

PROJECT :  
BTS SITE  
120A SHA KIU TSUEN,  
DEEP BAY ROAD,  
LAU FAU SHAN,  
N.T.  
(SITE CODE: 8359a)

DRAWING TITLE :  
DETAILS OF TRANSMISSION  
EQUIPMENT & ANTENNA FIXING

SCALE AT A1 AS SHOWN	DESIGNED : G.C.	DRAWN : ALAN	CHECKED : G.C.
	APPROVED : G.C.	DATE : 15 OCT., 2025	
PROJECT No. <b>J8001</b>	DRAWING No. : S3497-1	REV. -	

*Wong Mut Keung*  
Wong Mut Keung (RSE 40/03)  
Registered Structural Engineer