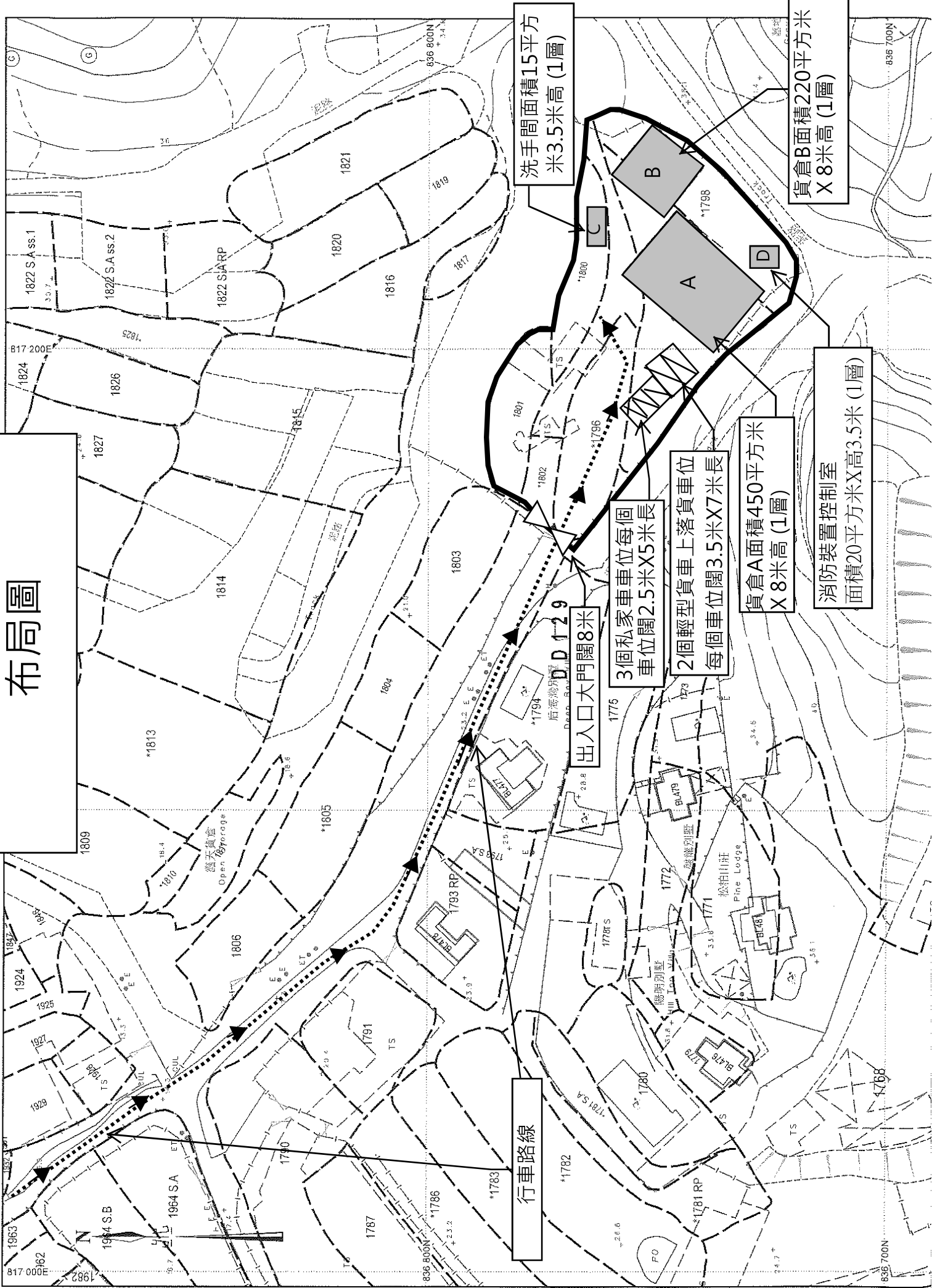


布局圖



1809
1813
1806
1803
1800
1801
1802
1803
1804
1805
1806
1807
1808
1809
1810
1811
1812
1813
1814
1815
1816
1817
1818
1819
1820
1821
1822
1823
1824
1825
1826
1827
1828
1829
1830
1831
1832
1833
1834
1835
1836
1837
1838
1839
1840
1841
1842
1843
1844
1845
1846
1847
1848
1849
1850
1851
1852
1853
1854
1855
1856
1857
1858
1859
1860
1861
1862
1863
1864
1865
1866
1867
1868
1869
1870
1871
1872
1873
1874
1875
1876
1877
1878
1879
1880
1881
1882
1883
1884
1885
1886
1887
1888
1889
1890
1891
1892
1893
1894
1895
1896
1897
1898
1899
1900

洗手間面積15平方
米3.5米高 (1層)

貨倉B面積220平方米
X 8米高 (1層)

消防裝置控制室
面積20平方米X高3.5米 (1層)

貨倉A面積450平方米
X 8米高 (1層)

3個私家車車位每個
車位闊2.5米X5米長

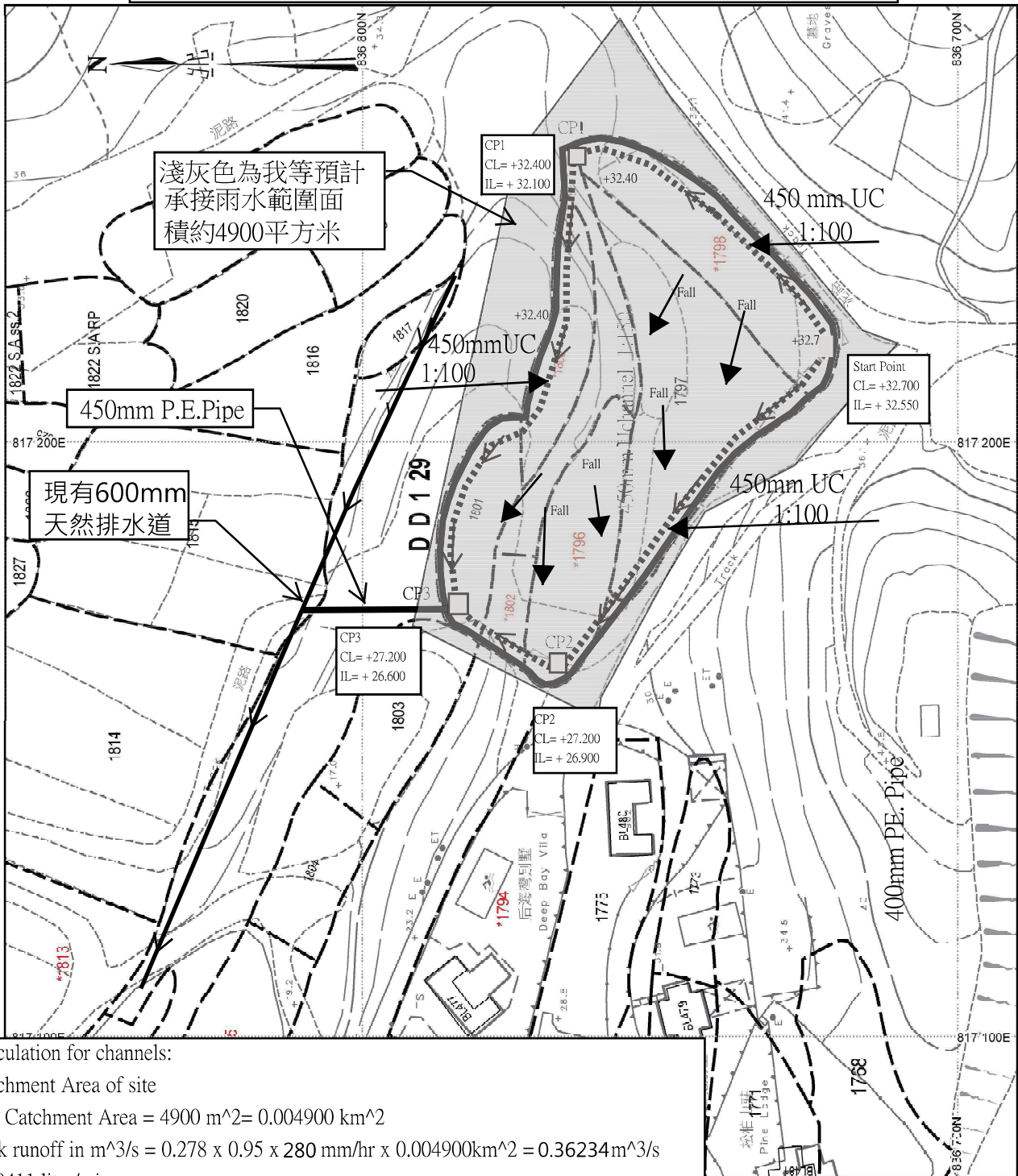
2個輕型貨車上落貨車位
每個車位闊3.5米X7米長

出入口大門闊8米

行車路線



雨水排放建議圖



Calculation for channels:
 Catchment Area of site
 Site Catchment Area = 4900 m²= 0.004900 km²
 Peak runoff in m³/s = 0.278 x 0.95 x 280 mm/hr x 0.004900km² = 0.36234m³/s
 = 19411 liter/min

According to (Figure 8.7 - Chart for the Rapid Design of Channels),
 For gradient 1:100, 450UC will be suitable for

Lands Department

米 metres

Note:

1. Catchpit (CP1-CP3) with desilting facility shall follow CEDD's standard drawing No. C 2406/1,C2406/2A
2. Catchpit and UC follows Typical Details of Geotechnical Manual for Slope Fig.8.10 and Fig.8.11 respectively.
3. The inverted level of the connection point shall be verified on site prior the commencement of work
4. Grating Concrete Cover follows CEDD's standard drawing No. C2412E: U-CHANNELS WITH PRECAST CONCRETE SLABS

