

6 August 2025

The Secretary
Town Planning Board
c/o Planning Department
15/F North Point Government Offices
333 Java Road, Hong Kong

By Hand and Email

Dear Sir

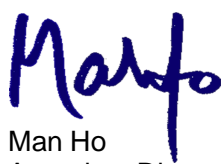
Section 16 Planning Application for Proposed Social Welfare Facility (Residential Care Home for the Elderly), Shop and Services (Medical Clinic and Consulting Room) and Public Vehicle Park (Private Car Only) in "Village Type Development" Zone at Lots 76 S.G (Part), 76 S.H (Part) in D.D. 101 and adjoining Government Land, Mai Po, Yuen Long (Application No. A/YL-MP/384)

Reference is made to the captioned application submitted to the Town Planning Board (the Board) on 19 December 2024 and the Further Information submitted on 10 April 2025, 18 June 2025, 5 August 2025 and 6 August 2025.

The Applicant would like to elaborate that the proposed Public Vehicle Park (Private Car Only) of the Proposed Development will serve (i) the planned Agriculture, Fisheries and Conservation Department Wetland Conservation Park Management Office to the immediate east of the Application Site as well as (ii) the planned Visitor Zone of the proposed Sam Po Shue Wetland Conservation Park to the immediate northwest of the Application Site. The Applicant would also like to hereby submit a full set of Master Layout Plan again with minor rectification of the legend.

Thank you for your kind attention. Should there be any queries, please do not hesitate to contact the undersigned at [REDACTED] / Mr Edison Law at [REDACTED]

Yours faithfully
for Llewelyn-Davies Hong Kong Ltd



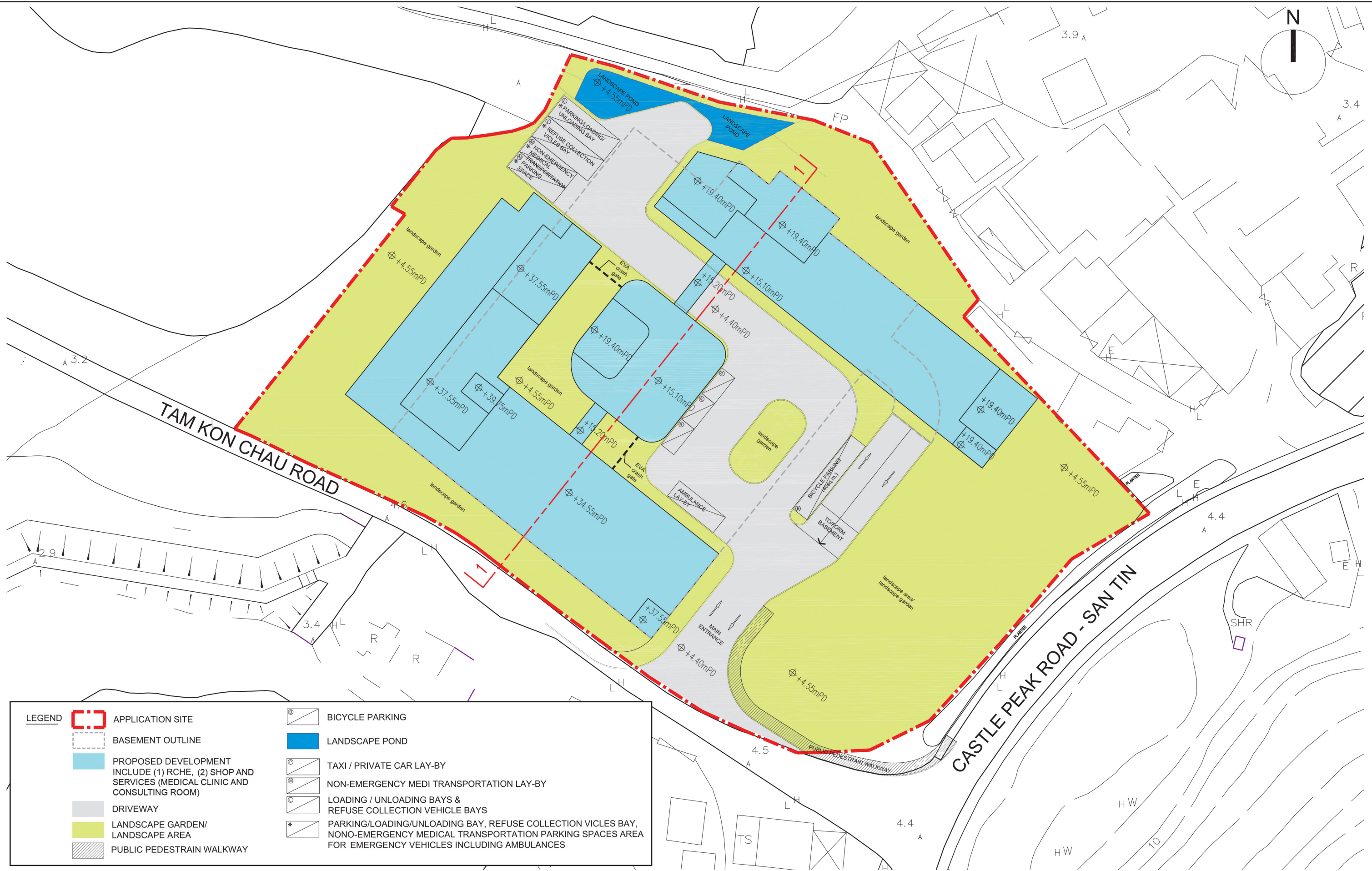
Man Ho
Associate Director

MH/el
Encl.

cc (w/ encl.)
DPO/FS&YLE

Attn: Mr Kimson Chiu / Ms Jessie Lau

(by email)



LEGEND

APPLICATION SITE

BASEMENT OUTLINE

PROPOSED DEVELOPMENT
INCLUDE (1) RCHE, (2) SHOP AND
SERVICES (MEDICAL CLINIC AND
CONSULTING ROOM)

DRIVEWAY

LANDSCAPE GARDEN/
LANDSCAPE AREA

PUBLIC PEDESTRAIN WALKWAY

BICYCLE PARKING

LANDSCAPE POND

TAXI / PRIVATE CAR LAY-BY

NON-EMERGENCY MEDI TRANSPORTATION LAY-BY

LOADING / UNLOADING BAYS &
REFUSE COLLECTION VEHICLE BAYS

PARKING/LOADING/UNLOADING BAY, REFUSE COLLECTION VICLES BAY,
NONO-EMERGENCY MEDICAL TRANSPORTATION PARKING SPACES AREA
FOR EMERGENCY VEHICLES INCLUDING AMBULANCES

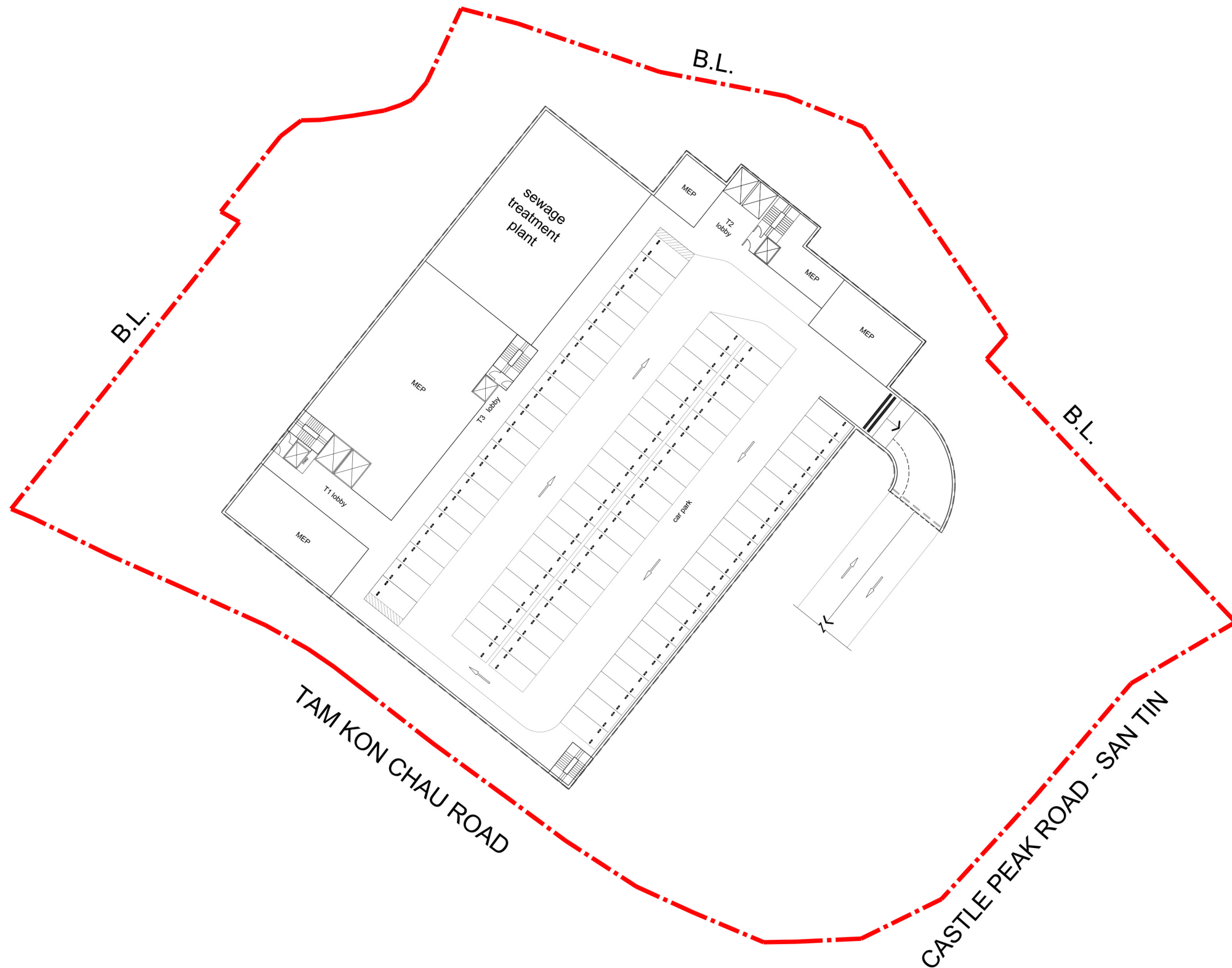
LWK

+PARTNERS


Title


Indicative Master Layout Plan


Checked	DH	Drawn	PW
Rev	0	Date	Aug 2025
Scale	Figure 3.1		



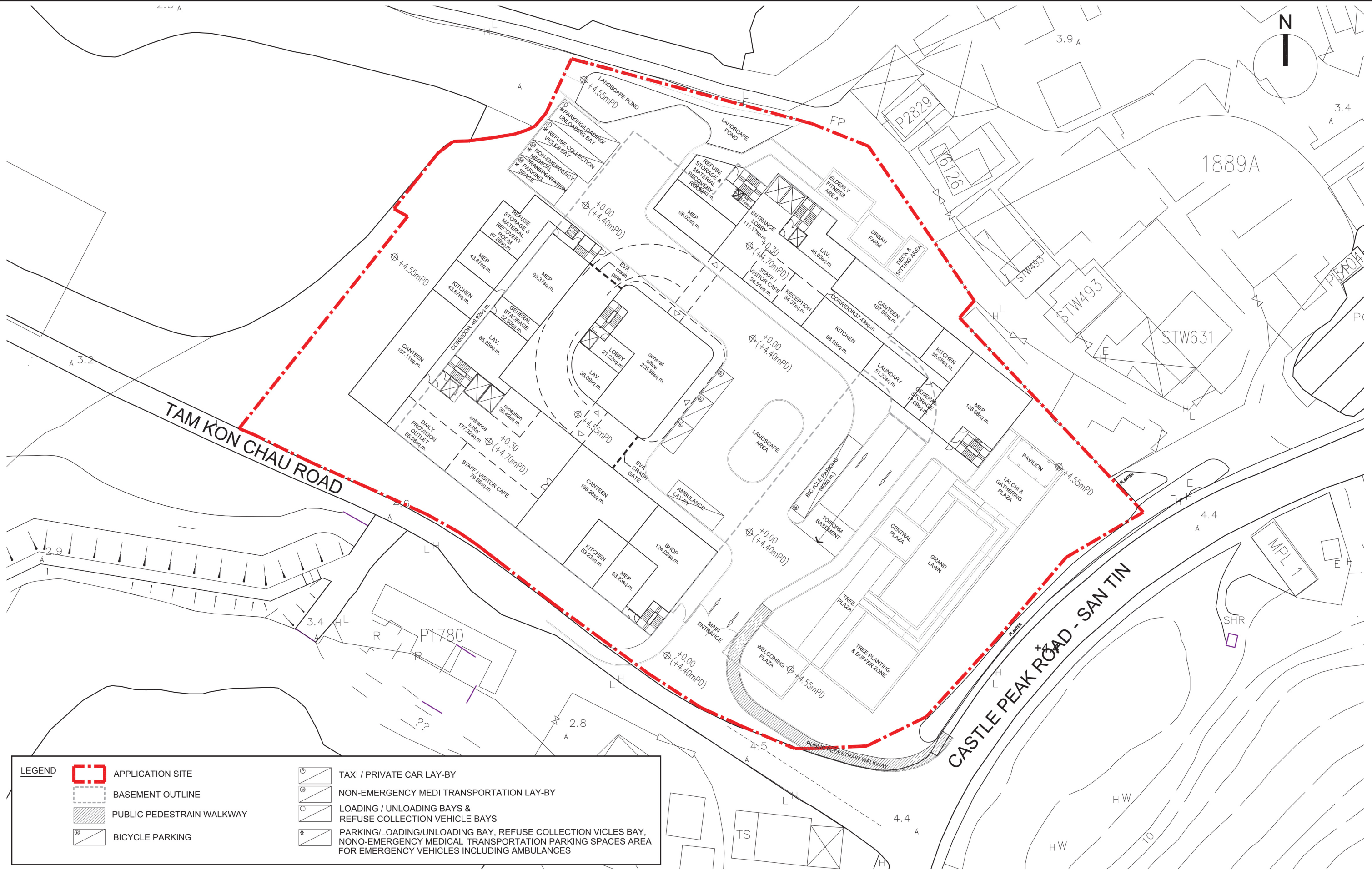
Legend

 APPLICATION SITE

 BASEMENT OUTLINE

 PRIVATE CAR PARKING

Checked	DH	Drawn	PW
Rev	0	Date	Aug 2025
Scale		Figure 3.2	

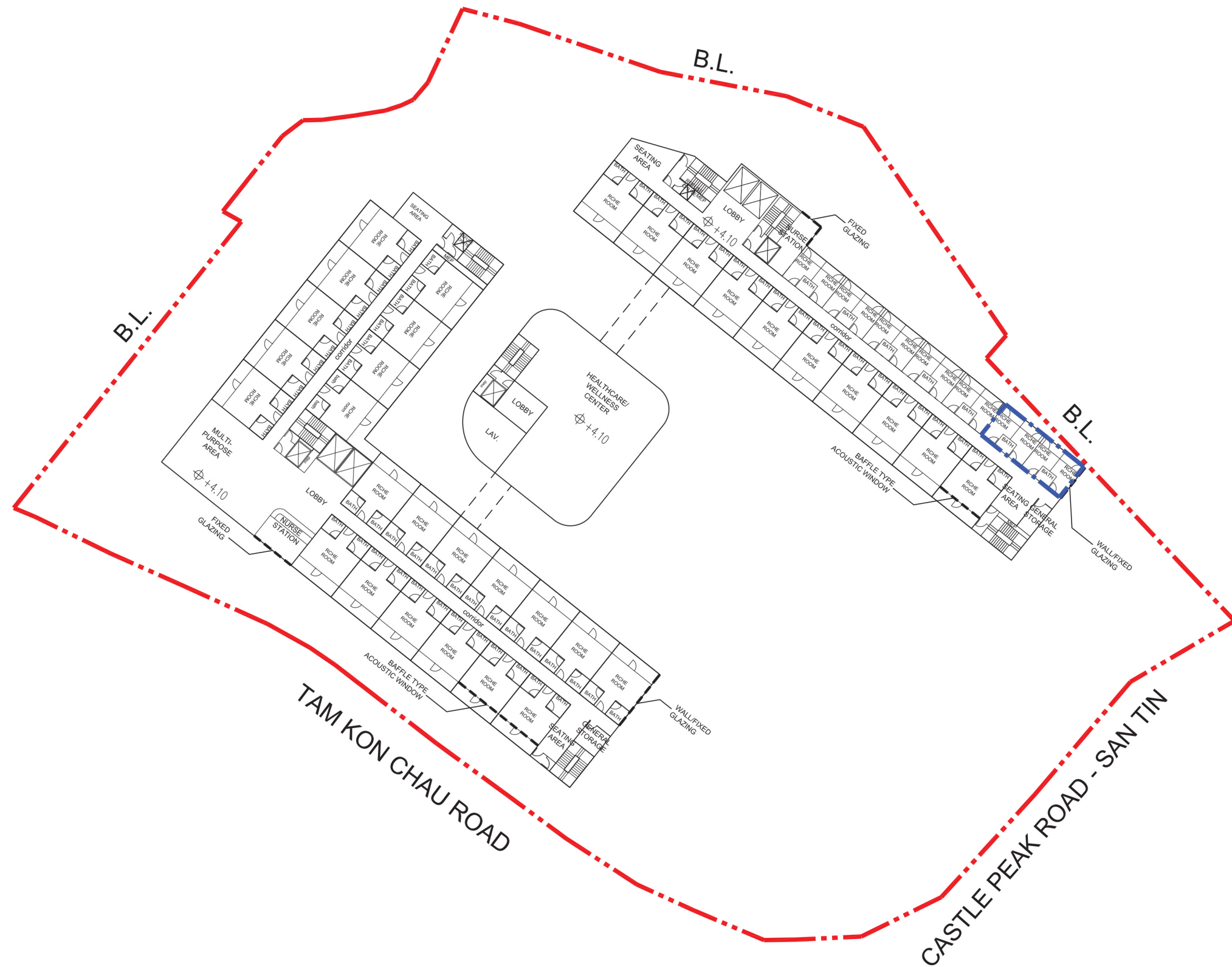


LEGEND

APPLICATION SITE

BASEMENT OUTLINE

PUBLIC PEDESTRAIN WALKWAYTAXI / PRIVATE CAR LAY-BY

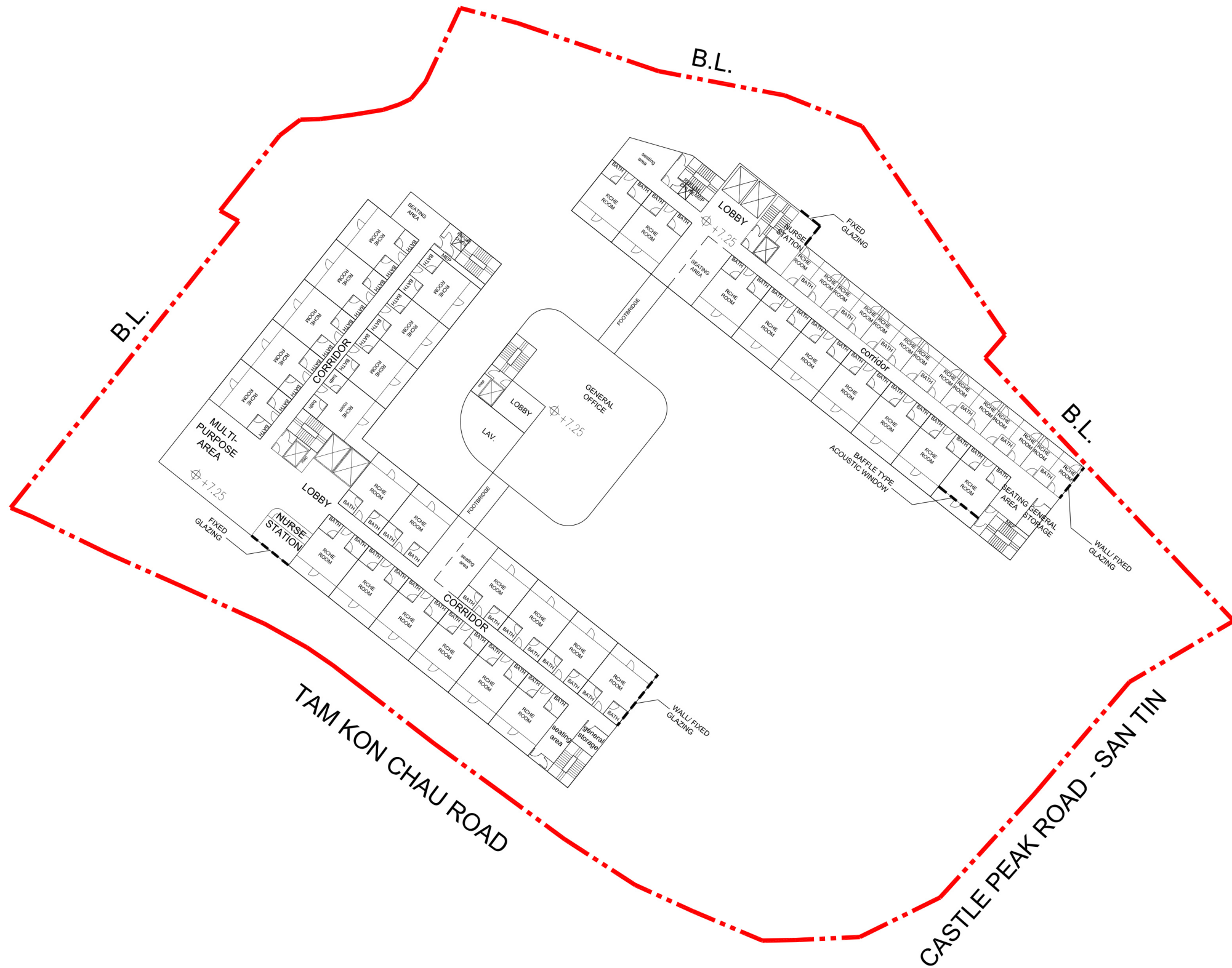
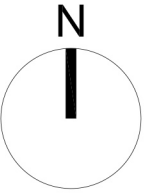


APPLICATION SITE
4 ISOLATION ROOMS

**LWK
+ PARTNERS**

Indicative 1/F Plan

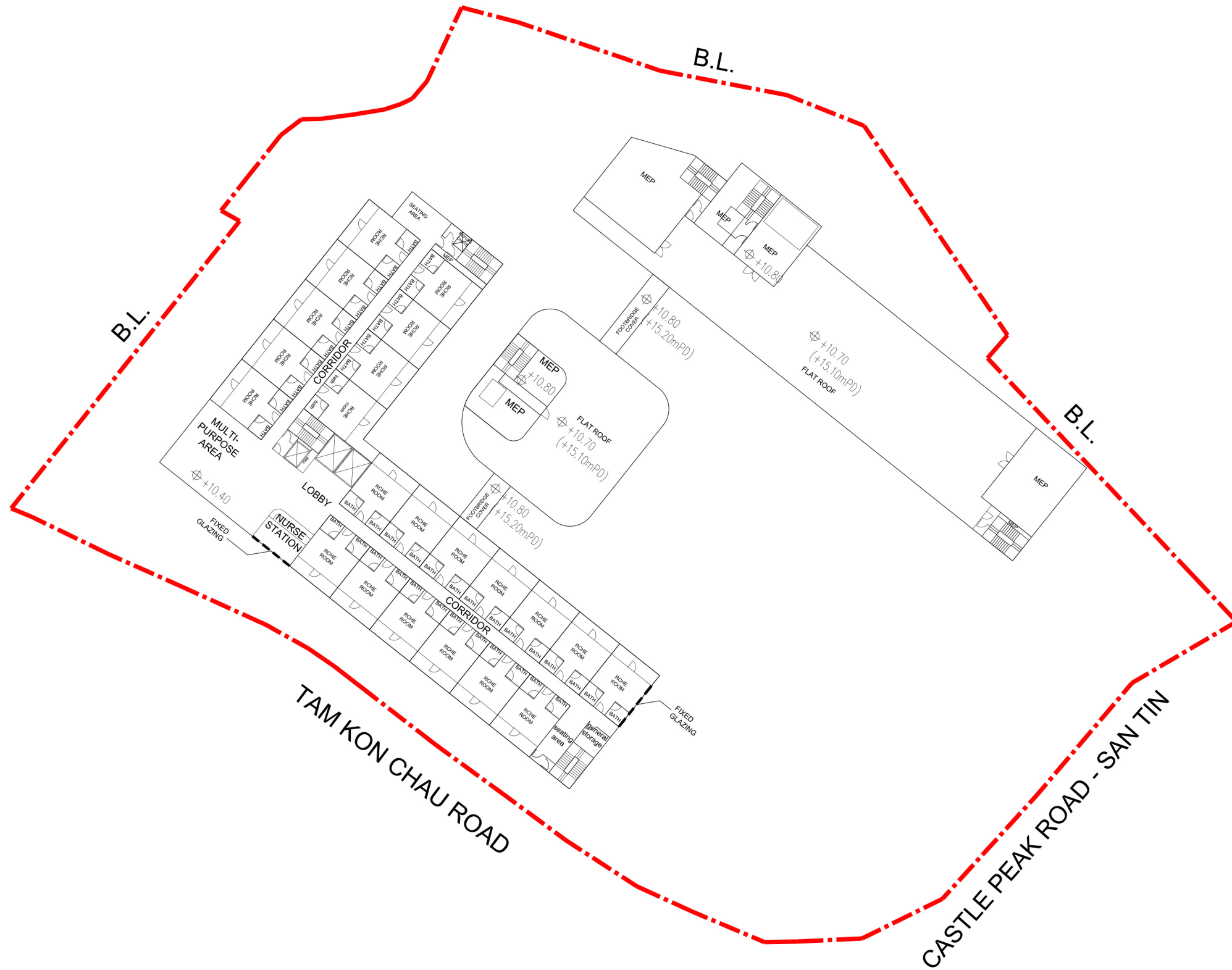
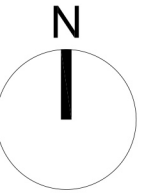
Checked	DH	Drawn	PW
Rev	0	Date	Aug 2025
Scale		Figure 3.4	



LEGEND

 APPLICATION SITE

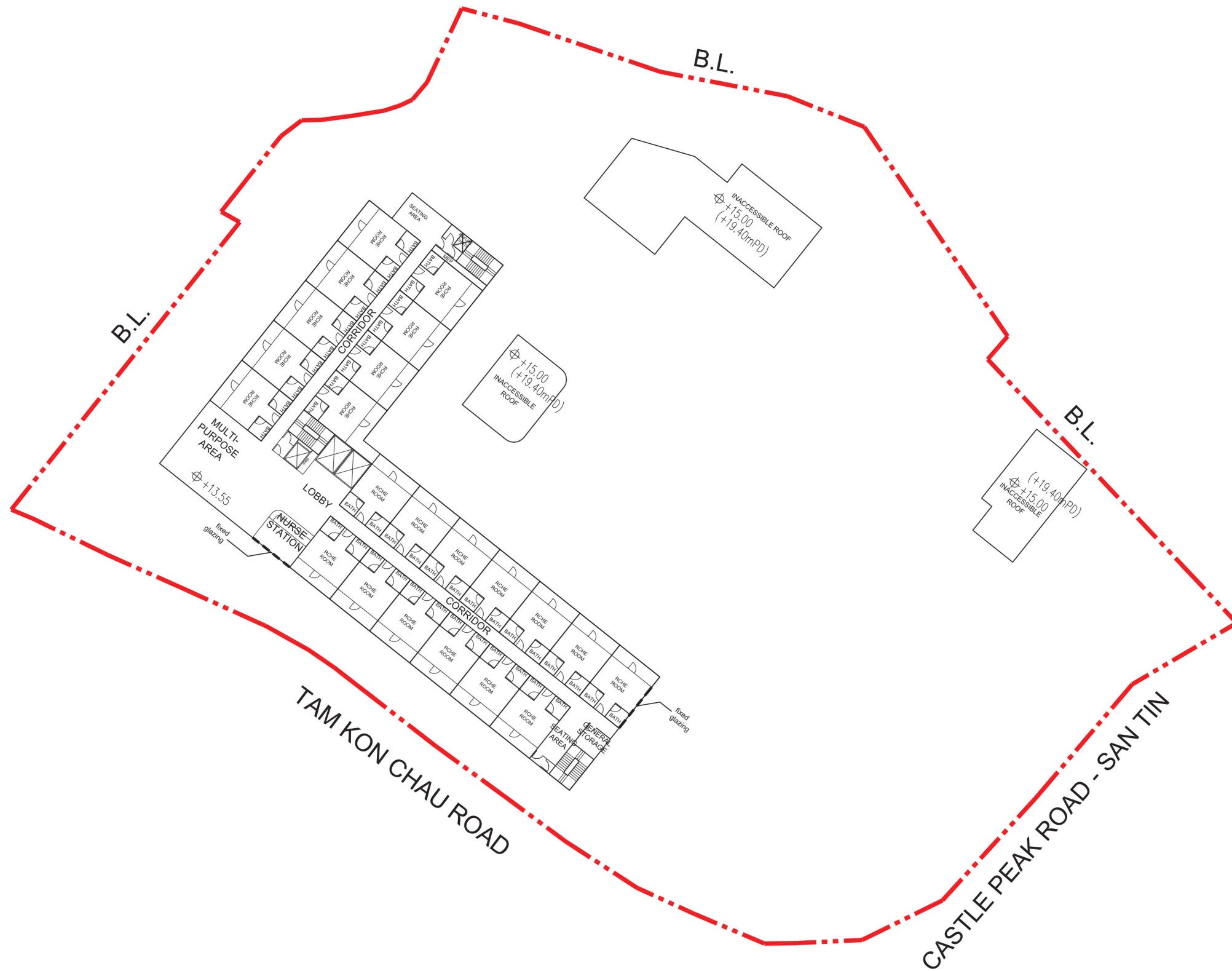
Checked	DH	Drawn	PW
Rev	0	Date	Aug 2025
Scale		Figure 3.5	



LEGEND

 APPLICATION SITE

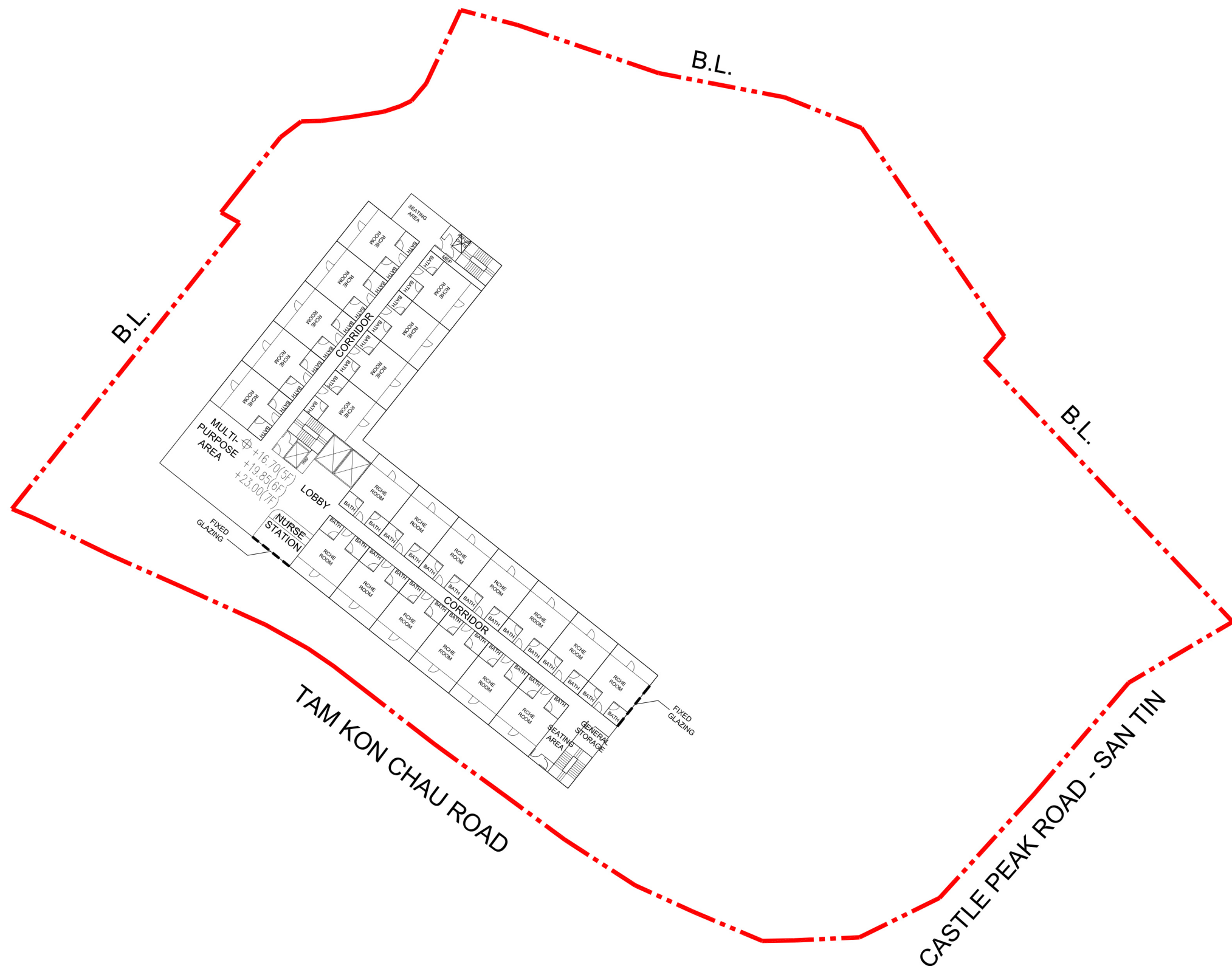
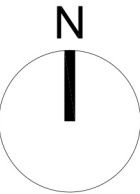
Checked	DH	Drawn	PW
Rev	0	Date	Aug 2025
Scale		Figure 3.6	



LEGEND

 APPLICATION SITE

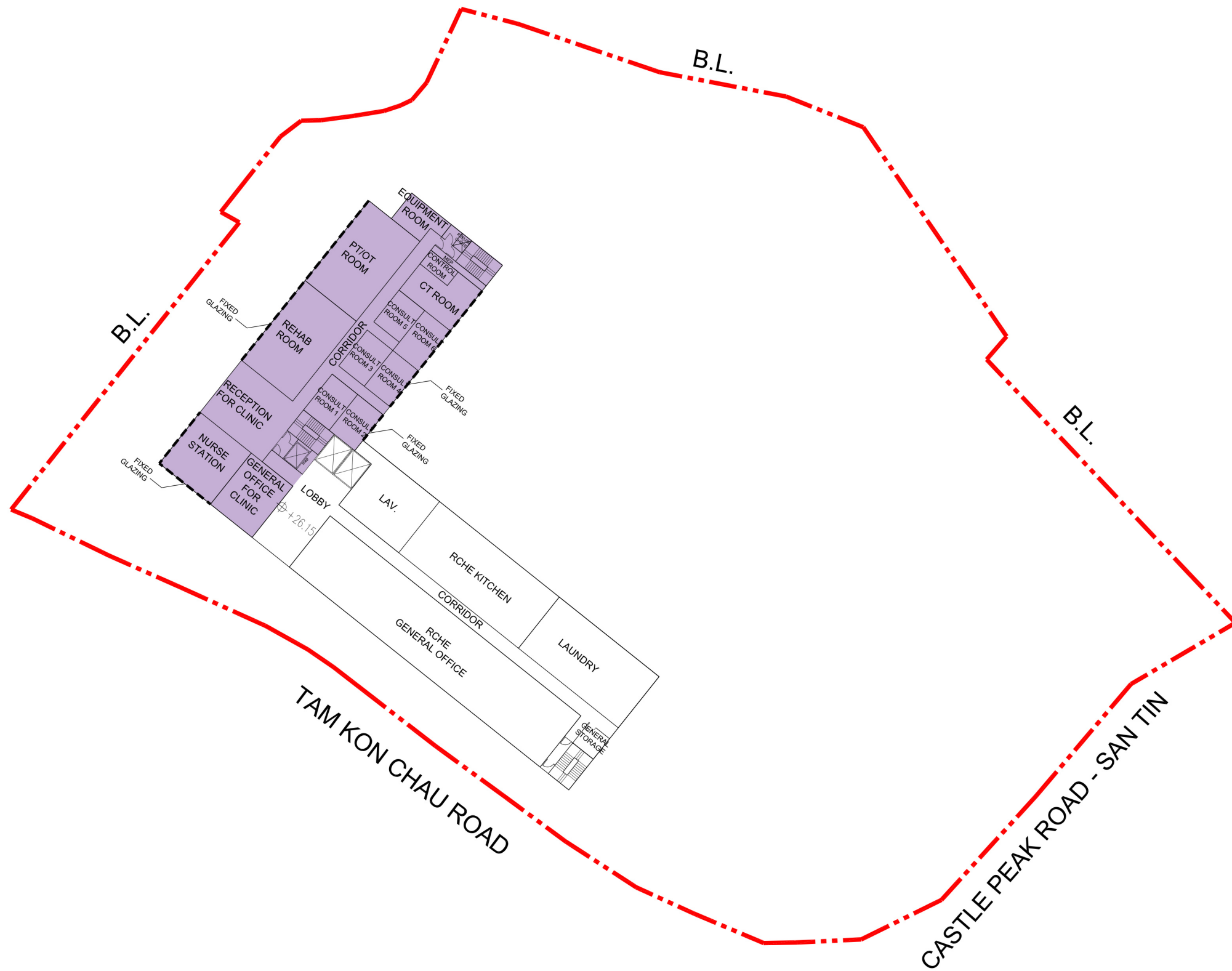
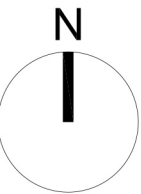
Checked	DH	Drawn	PW
Rev	0	Date	Aug 2025
Scale		Figure 3.7	




LEGEND


 APPLICATION SITE

Checked	DH	Drawn	PW
Rev	0	Date	Aug 2025
Scale		Figure 3.8	

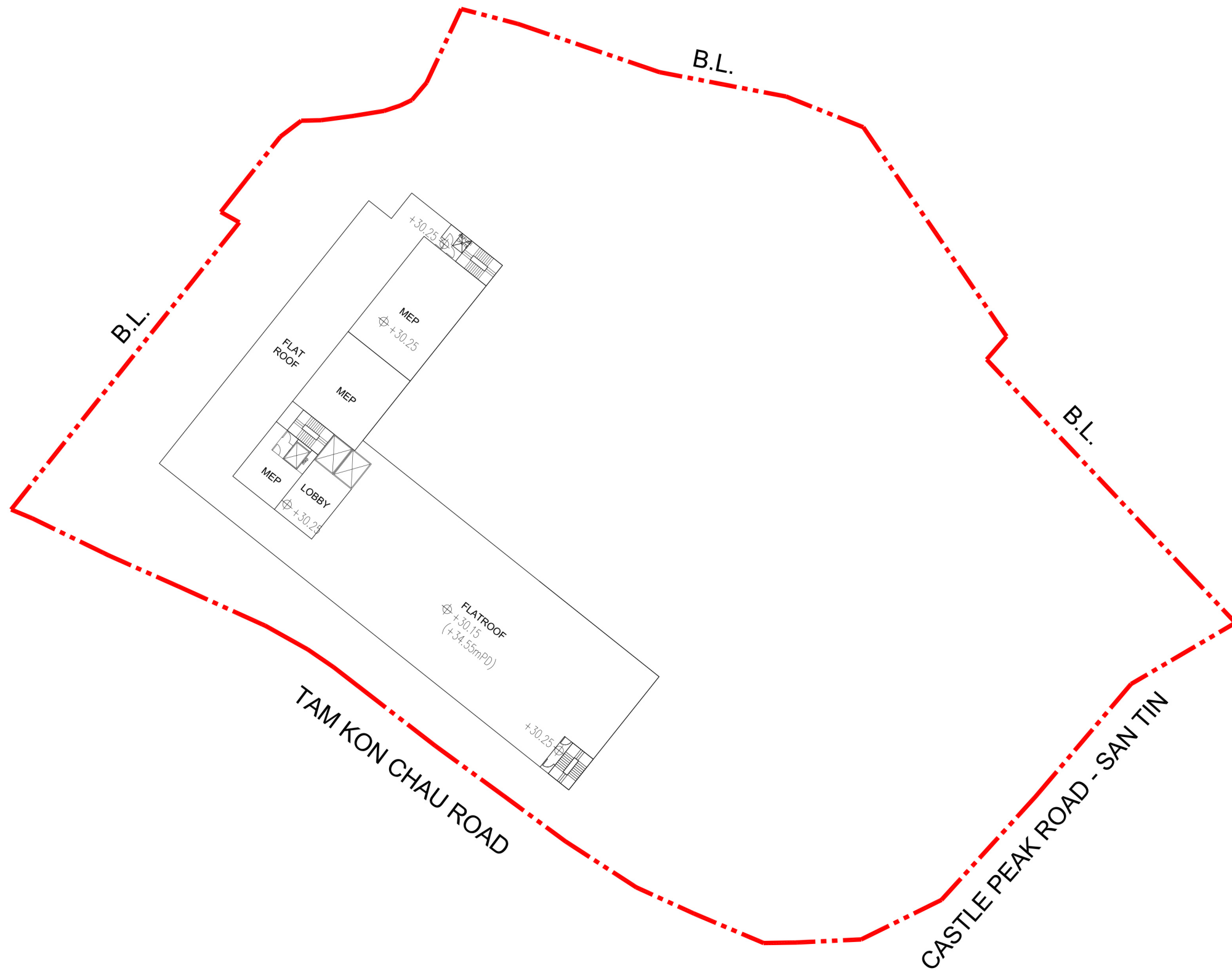
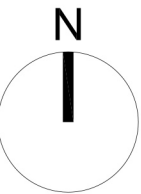


LEGEND

 APPLICATION SITE

 SHOP AND SERVICES (MEDICAL CLINIC AND CONSULTING ROOM)

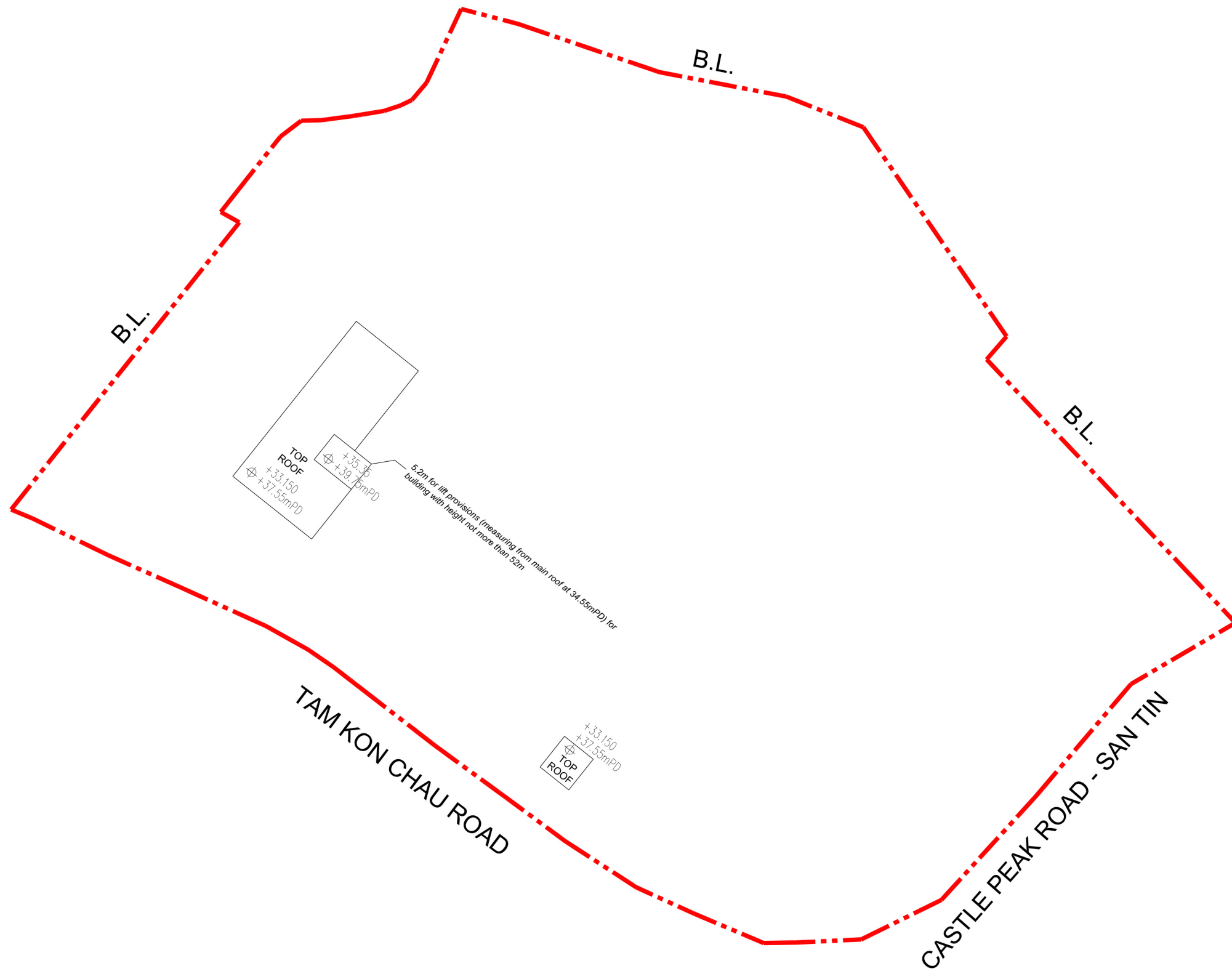
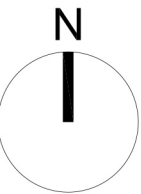
Checked	DH	Drawn	PW
Rev	0	Date	Aug 2025
Scale		Figure 3.9	



LEGEND

 APPLICATION SITE

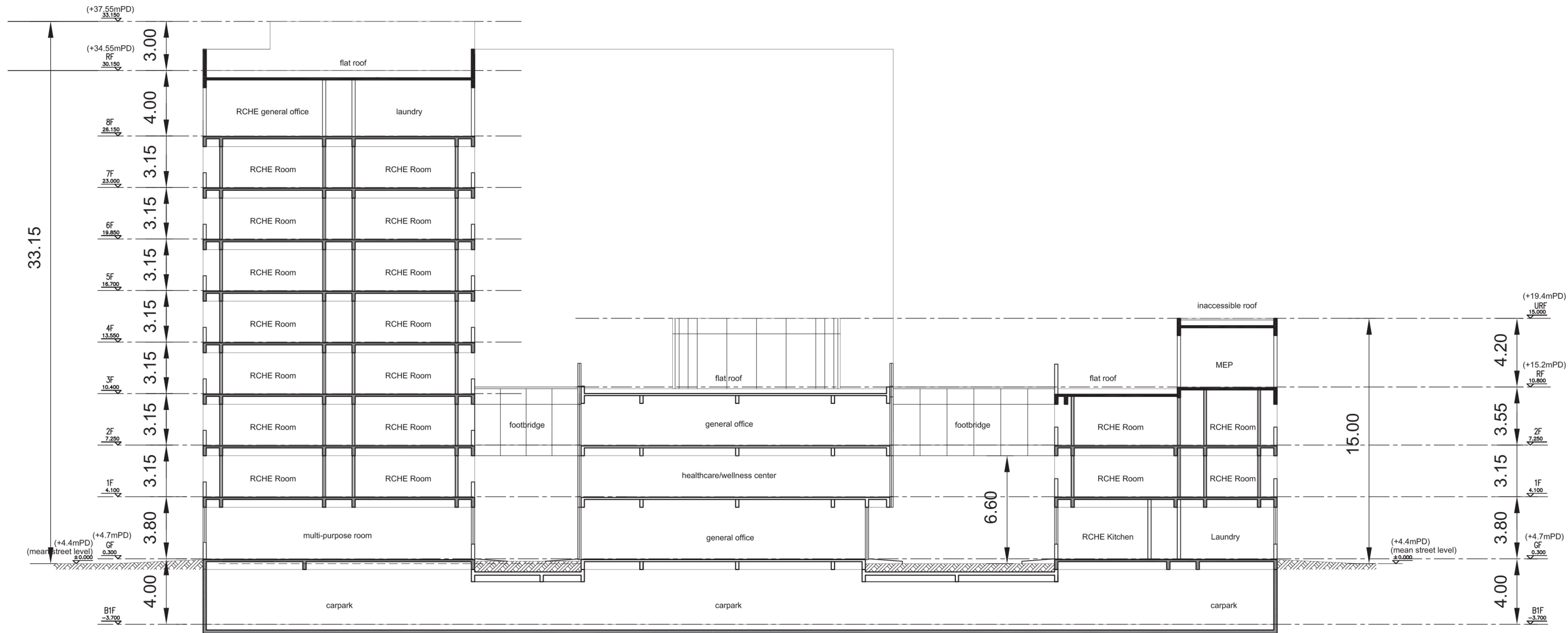
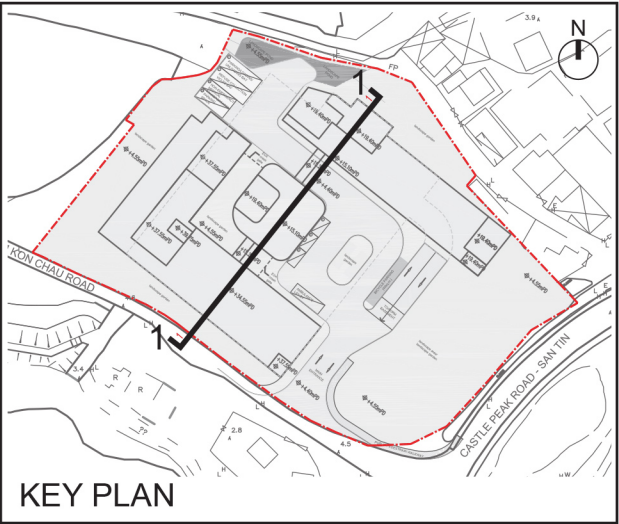
Checked	DH	Drawn	PW
Rev	0	Date	Aug 2025
Scale		Figure 3.10	



LEGEND

 APPLICATION SITE

Checked	DH	Drawn	PW
Rev	0	Date	Aug 2025
Scale		Figure 3.11	



**LWK
+PARTNERS**

Title

Indicative Section Plan (1-1)

Checked	DH	Drawn	PW
Rev	0	Date	Aug 2025
Scale		Figure 3.12	