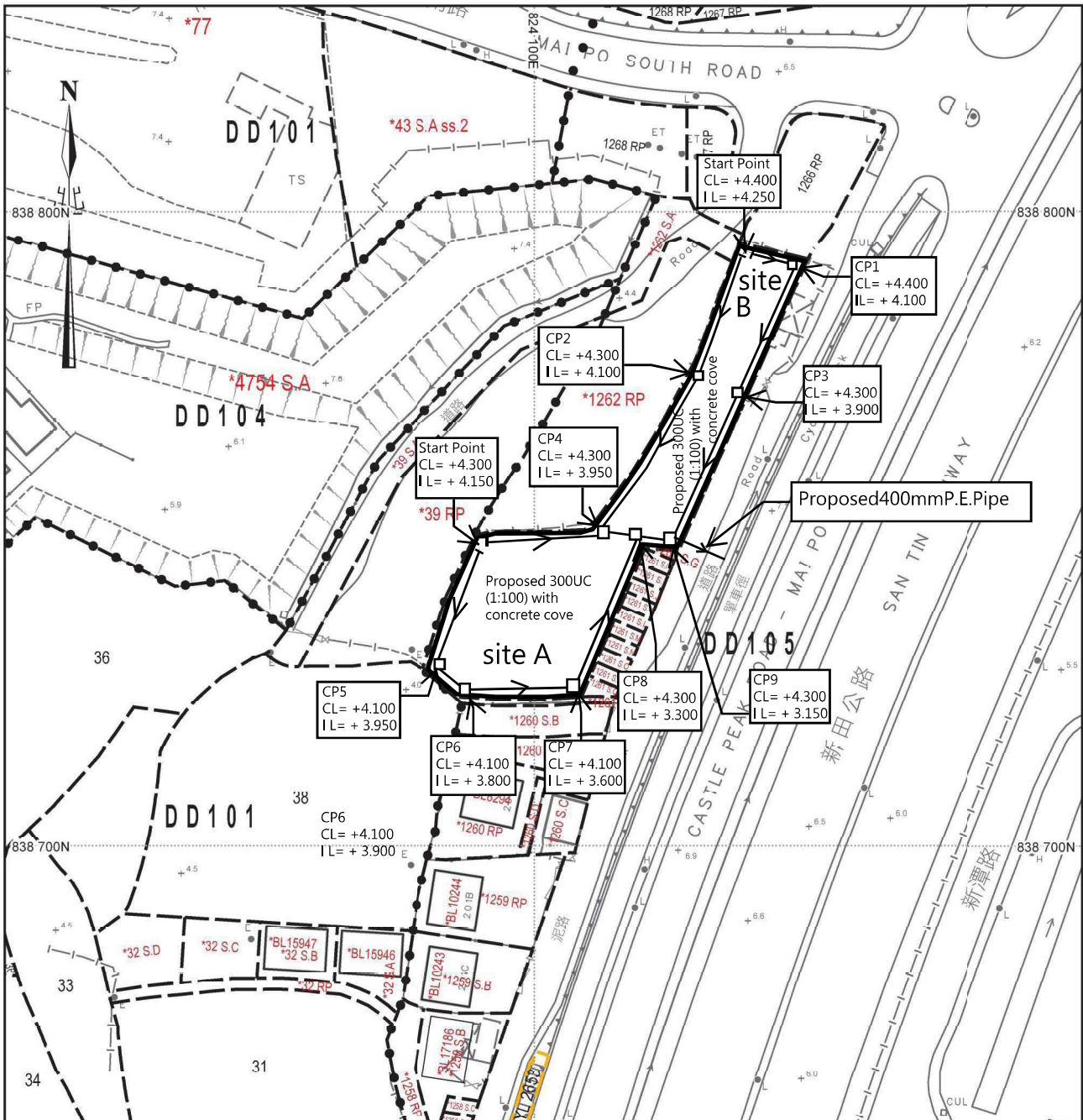


1. The applicant should submit a clear drainage plan showing full details of the existing drains & the proposed drains (eg. cover & invert levels of pipes/catchpits/outfalls and ground levels justifying waterflow etc.) with supporting design calculations & charts should be included during the submission of a drainage proposal to demonstrate the methodology to collect, convey and discharge rain water falling onto or flowing to the application site. The applicant should also note that the design calculations should be derived according to the latest version of DSD Stormwater Drainage Manual showing the adequacy of the proposed drainage system. (For preparation of the drainage proposal, the Guideline on preparation of the drainage proposal is available in DSD homepage at https://www.dsd.gov.hk/EN/Files/Technical_Manual/dsd_guideline/Drainage_Submission.pdf for reference). The applicant is reminded that approval of the drainage proposal must be sought prior to the implementation of drainage works on site.
我等已從新擬定新一份雨水排放建議書給貴署審議。同時我等必須取得渠務署批准才會建造有關的雨水渠。
2. After completion of the required drainage works, the applicant shall provide DSD for reference a set of record photographs showing the completed drainage works with corresponding photograph locations marked clearly on the approved drainage plan. DSD will inspect the completed drainage works jointly with the applicant with reference to the set of photographs.
在排水工程完成後，我等會將完工後渠道相及拍攝位置說明一並交給貴署審議。
3. The applicant shall ascertain that all existing flow paths would be properly intercepted and maintained without increasing the flooding risk of the adjacent areas.
我等已小心計算有關排水方案，鄰近雨水水流徑我等都可以承接，而不會增加鄰近地區的洪水風險。
4. The applicant is reminded that the proposed drainage proposal / works as well as the site boundary should not cause encroachment upon areas outside applicant's jurisdiction.
我等擬建的排水渠絕對不會侵占我等場地範圍以外的地方。
5. No public sewerage maintained by DSD is currently available for connection. For sewage disposal and treatment, agreement from DEP shall be obtained.
我等加工工場並沒有設置洗手間，因此不會產生污水的情況出現。
6. The applicant should consult DLO/YL regarding all the proposed drainage works outside the lot boundary in order to ensure the unobstructed discharge from the application site in future.
如在場地以外的地方建造雨水渠，我等必定會取得有關部門同意才會進行工程。
7. All the proposed drainage facilities should be constructed and maintained by the applicant at his own cost. The applicant should ensure and keep all drainage works on site under proper maintenance at all times
所有擬建的排水渠全部由我等自資建造，包括日後維修保養的工作。

雨水排放建議圖



Calculation for channels:

Catchment Area of site A

Site Catchment Area = 1324m^2

= 0.001324 km^2

Peak runoff in m^3/s = $0.278 \times 0.95 \times 240\text{ mm/hr} \times 0.001324\text{ km}^2 = 0.08392\text{m}^3/\text{s}$

= 5245 liter/min

Catchment Area of site B

Site Catchment Area = 2091m^2

= 0.002091 km^2

Peak runoff in m^3/s = $0.278 \times 0.95 \times 240\text{ mm/hr} \times 0.002091\text{ km}^2 = 0.13253\text{m}^3/\text{s}$

= 8283 liter/min

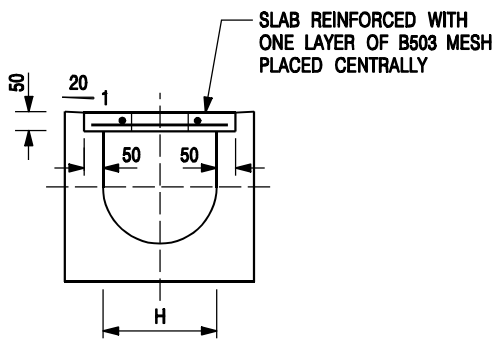
Peak runoff in liter/min of A+B = 13528 liter/min

For gradient 1:100, 300UC will be suitable for A

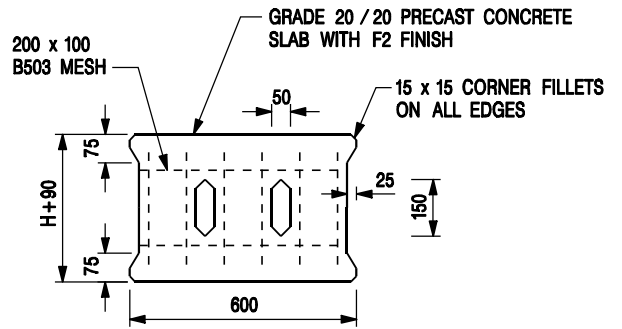
For gradient 1:100, 300UC will be suitable for B

Note:

1. Catchpit (CP9) with desilting facility shall follow CEDD's standard drawing No. C2406/1. C2406/2A
2. Catchpit and UC follows Typical Details of Geotechnical Manual for Slope Fig.8.10 and Fig.8.11 respectively.
3. The inverted level of the connection point shall be verified on site prior to the commencement of work
4. Grating Concrete Cover follows CEDD's standard drawing No. C2412E: U-CHANNELS WITH PRECAST CONCRETE SLABS



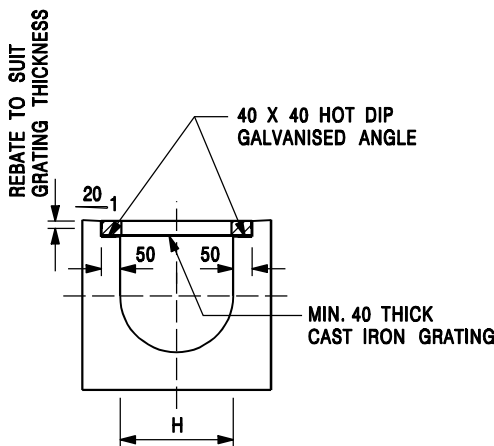
TYPICAL SECTION



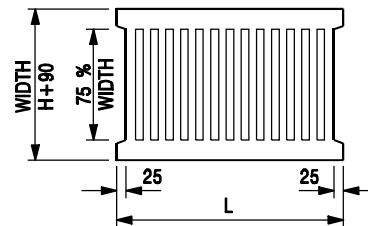
PLAN OF SLAB

U-CHANNELS WITH PRECAST CONCRETE SLABS

(UP TO H OF 525)



TYPICAL SECTION



L = 600mm FOR H ≤ 375mm
L = 400mm FOR H > 375mm

CAST IRON GRATING

(DIMENSIONS ARE FOR GUIDANCE ONLY, CONTRACTOR MAY SUBMIT EQUIVALENT TYPE)

U-CHANNEL WITH CAST IRON GRATING

(UP TO H OF 525)

NOTES:

1. ALL DIMENSIONS ARE IN MILLIMETRES.
2. H=NOMINAL CHANNEL SIZE.
3. ALL CAST IRON FOR GRATINGS SHALL BE GRADE EN-GJL-150 COMPLYING WITH BS EN 1561.
4. FOR COVERED CHANNELS TO BE HANDED OVER TO HIGHWAYS DEPARTMENT FOR MAINTENANCE, THE GRATING DETAILS SHALL FOLLOW THOSE AS SHOWN ON HyD STD. DRG. NO. H3156.

REF.	REVISION	SIGNATURE	DATE
E	NOTES 3 & 4 AMENDED.	Original Signed	12.2014
D	NOTE 4 ADDED.	Original Signed	06.2008
C	MINOR AMENDMENT. NOTE 3 ADDED.	Original Signed	12.2005
B	NAME OF DEPARTMENT AMENDED.	Original Signed	01.2005
A	CAST IRON GRATING AMENDED.	Original Signed	12.2002

COVER SLAB AND CAST IRON GRATING FOR CHANNELS

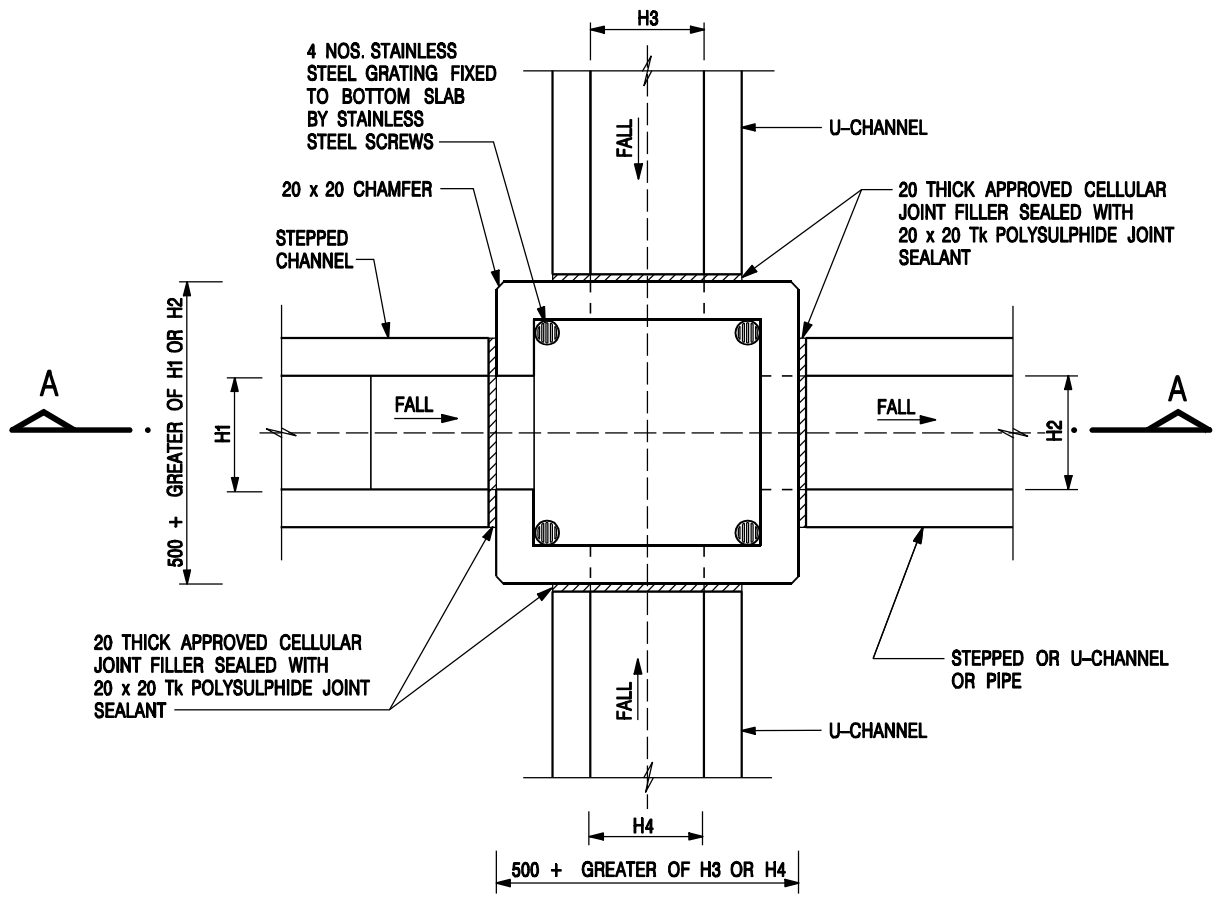


CIVIL ENGINEERING AND DEVELOPMENT DEPARTMENT

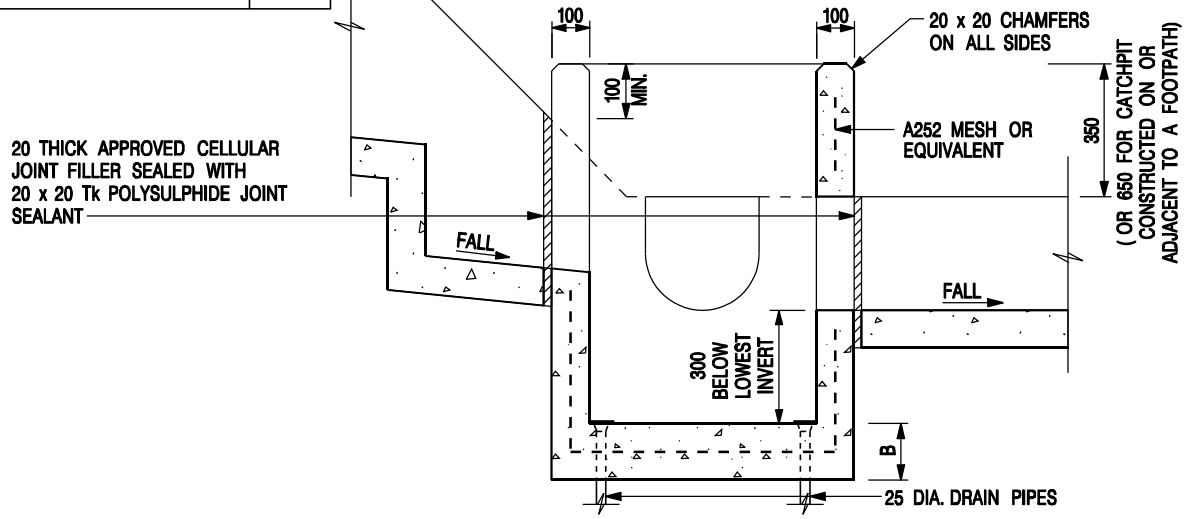
SCALE 1 : 20

DATE JAN 1991

DRAWING NO.
C2412E



NOMINAL SIZE (LARGEST OF H1, H2, H3 & H4)	B
300 - 600	150
675 - 900	175



NOTES:

1. ALL DIMENSIONS ARE IN MILLIMETRES.
2. REFER TO SHEET 2 FOR OTHER NOTES.

-	FORMER DRG. NO. C2406J.	Original Signed	03.2015
REF.	REVISION	SIGNATURE	DATE

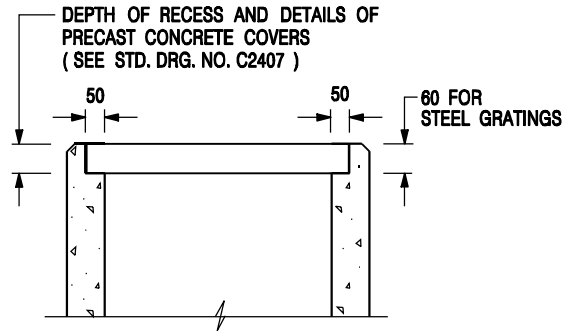
CATCHPIT WITH TRAP
(SHEET 1 OF 2)



**CIVIL ENGINEERING AND
DEVELOPMENT DEPARTMENT**

SCALE 1 : 20
DATE JAN 1991

DRAWING NO.
C2406 /1




ALTERNATIVE TOP SECTION
FOR PRECAST CONCRETE COVERS / GRATINGS

NOTES:

1. ALL DIMENSIONS ARE IN MILLIMETRES.
2. ALL CONCRETE SHALL BE GRADE 20 /20.
3. CONCRETE SURFACE FINISH SHALL BE CLASS U2 OR F2 AS APPROPRIATE.
4. FOR DETAILS OF JOINT, REFER TO STD. DRG. NO. C2413.
5. CONCRETE TO BE COLOURED AS SPECIFIED.
6. UNLESS REQUESTED BY THE MAINTENANCE PARTY AND AS DIRECTED BY THE ENGINEER, CATCHPIT WITH TRAP IS NORMALLY NOT PREFERRED DUE TO PONDING PROBLEM.
7. UPON THE REQUEST FROM MAINTENANCE PARTY, DRAIN PIPES AT CATCHPIT BASE CAN BE USED BUT THIS IS FOR CATCHPITS LOCATED AT SLOPE TOE ONLY AND AS DIRECTED BY THE ENGINEER.
8. FOR CATCHPITS CONSTRUCTED ON OR ADJACENT TO A FOOTPATH, STEEL GRATINGS (SEE DETAIL 'A' ON STD. DRG. NO. C2405) OR CONCRETE COVERS (SEE STD. DRG. NO. C2407) SHALL BE PROVIDED AS DIRECTED BY THE ENGINEER.
9. IF INSTRUCTED BY THE ENGINEER, HANDRAILING (SEE DETAIL 'G' ON STD. DRG. NO. C2405; EXCEPT ON THE UPSLOPE SIDE) IN LIEU OF STEEL GRATINGS OR CONCRETE COVERS CAN BE ACCEPTED AS AN ALTERNATIVE SAFETY MEASURE FOR CATCHPITS NOT ON A FOOTPATH NOR ADJACENT TO IT. TOP OF THE HANDRAILING SHALL BE 1 000 mm MIN. MEASURED FROM THE ADJACENT GROUND LEVEL.
10. MINIMUM INTERNAL CATCHPIT WIDTH SHALL BE 1 000 mm FOR CATCHPITS WITH A HEIGHT EXCEEDING 1 000 mm MEASURED FROM THE INVERT LEVEL TO THE ADJACENT GROUND LEVEL. AND, STEP IRONS (SEE DSD STD. DRG. NO. DS1043) AT 300 ϕ STAGGERED SHALL BE PROVIDED. THICKNESS OF CATCHPIT WALL FOR INSTALLATION OF STEP IRONS SHALL BE INCREASED TO 150 mm.
11. FOR RETROFITTING AN EXISTING CATCHPIT WITH STEEL GRATING, SEE DETAIL 'F' ON STD. DRG. NO. C2405.
12. SUBJECT TO THE APPROVAL OF THE ENGINEER, OTHER MATERIALS CAN ALSO BE USED AS COVERS / GRATINGS.

-	FORMER DRG. NO. C2406J.	Original Signed	03.2015
REF.	REVISION	SIGNATURE	DATE

CATCHPIT WITH TRAP
(SHEET 2 OF 2)

 CIVIL ENGINEERING AND DEVELOPMENT DEPARTMENT	
SCALE 1 : 20	DRAWING NO.
DATE JAN 1991	C2406 /2

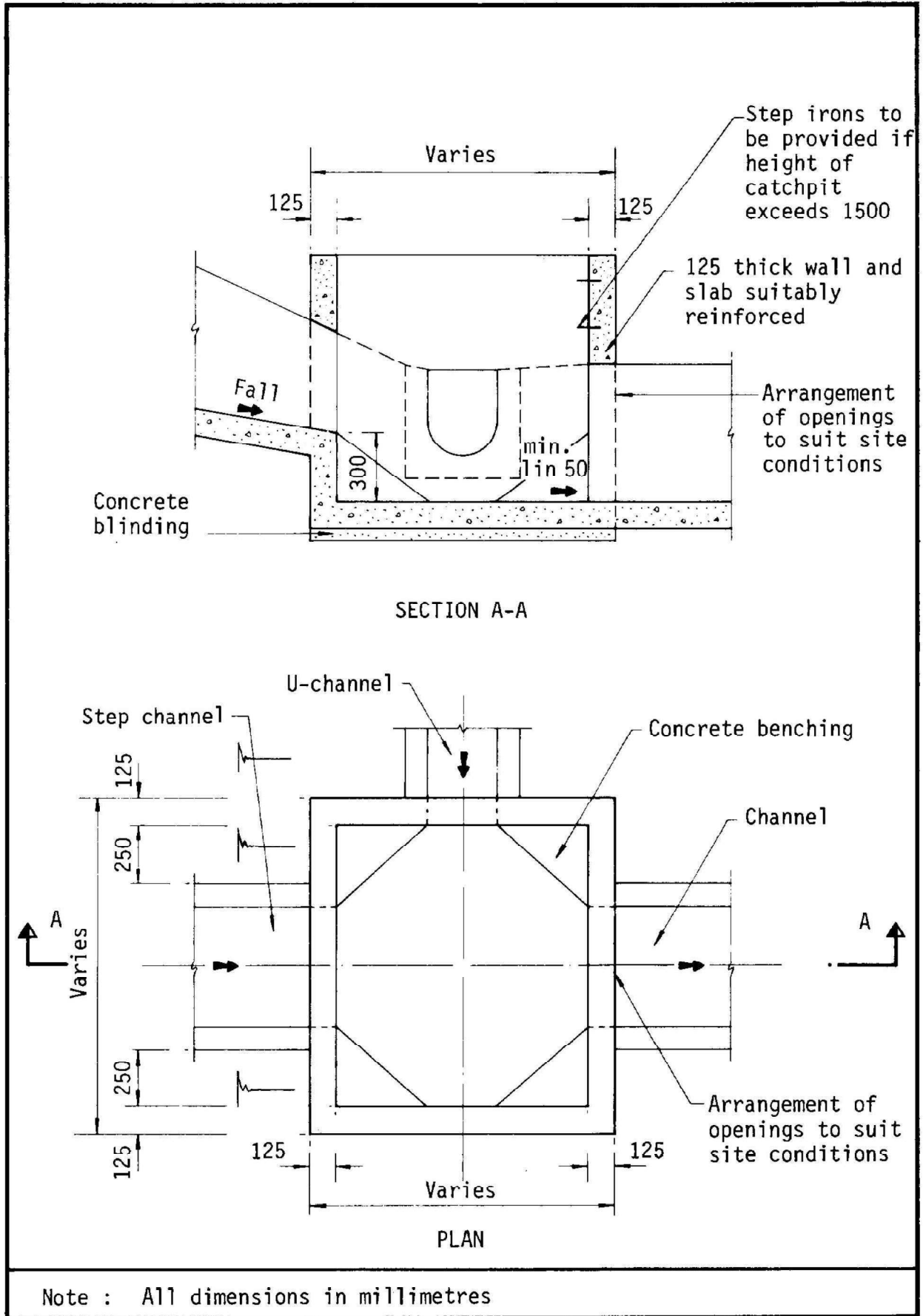
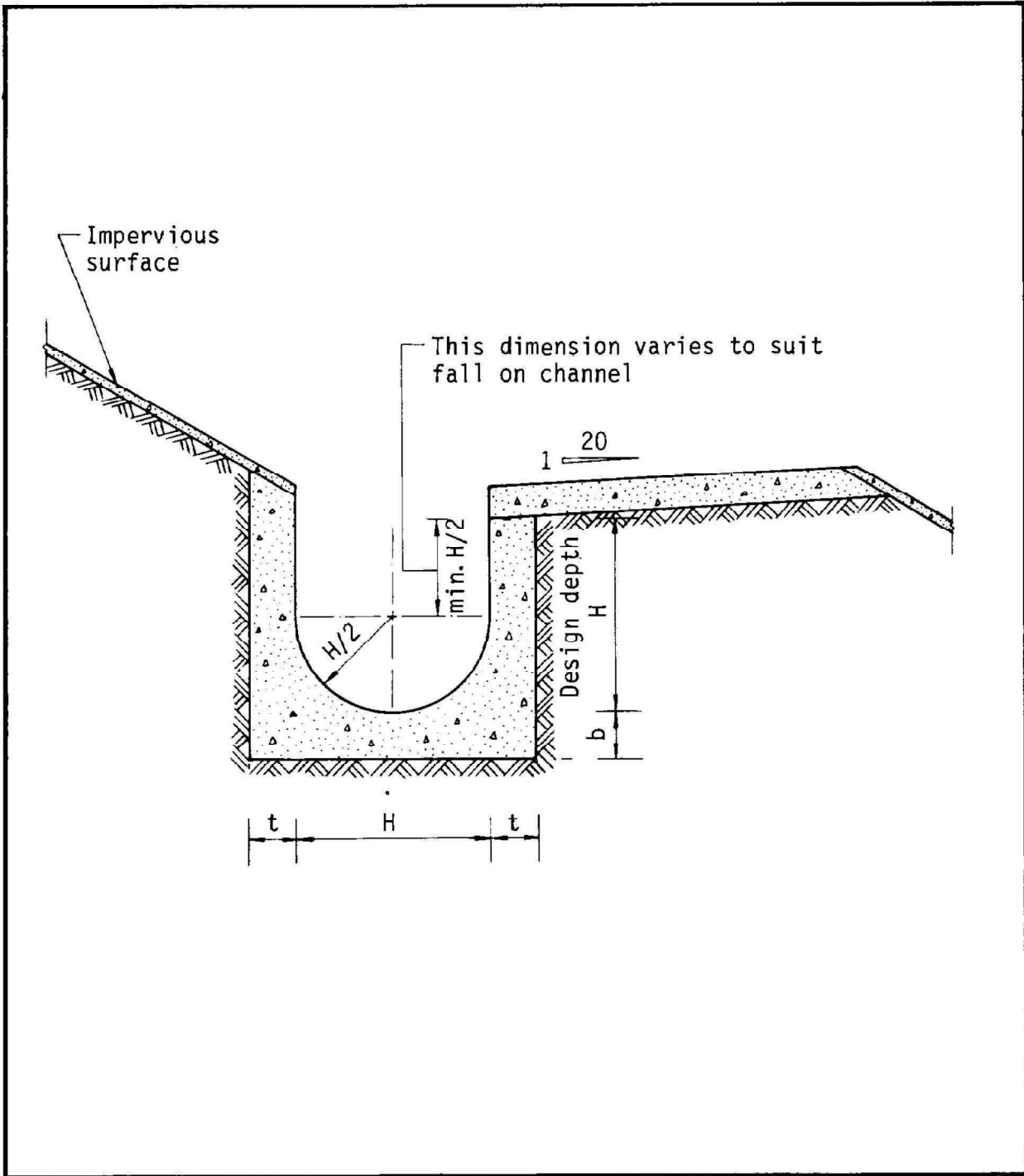


Figure 8.10 - Typical Details of Catchpits



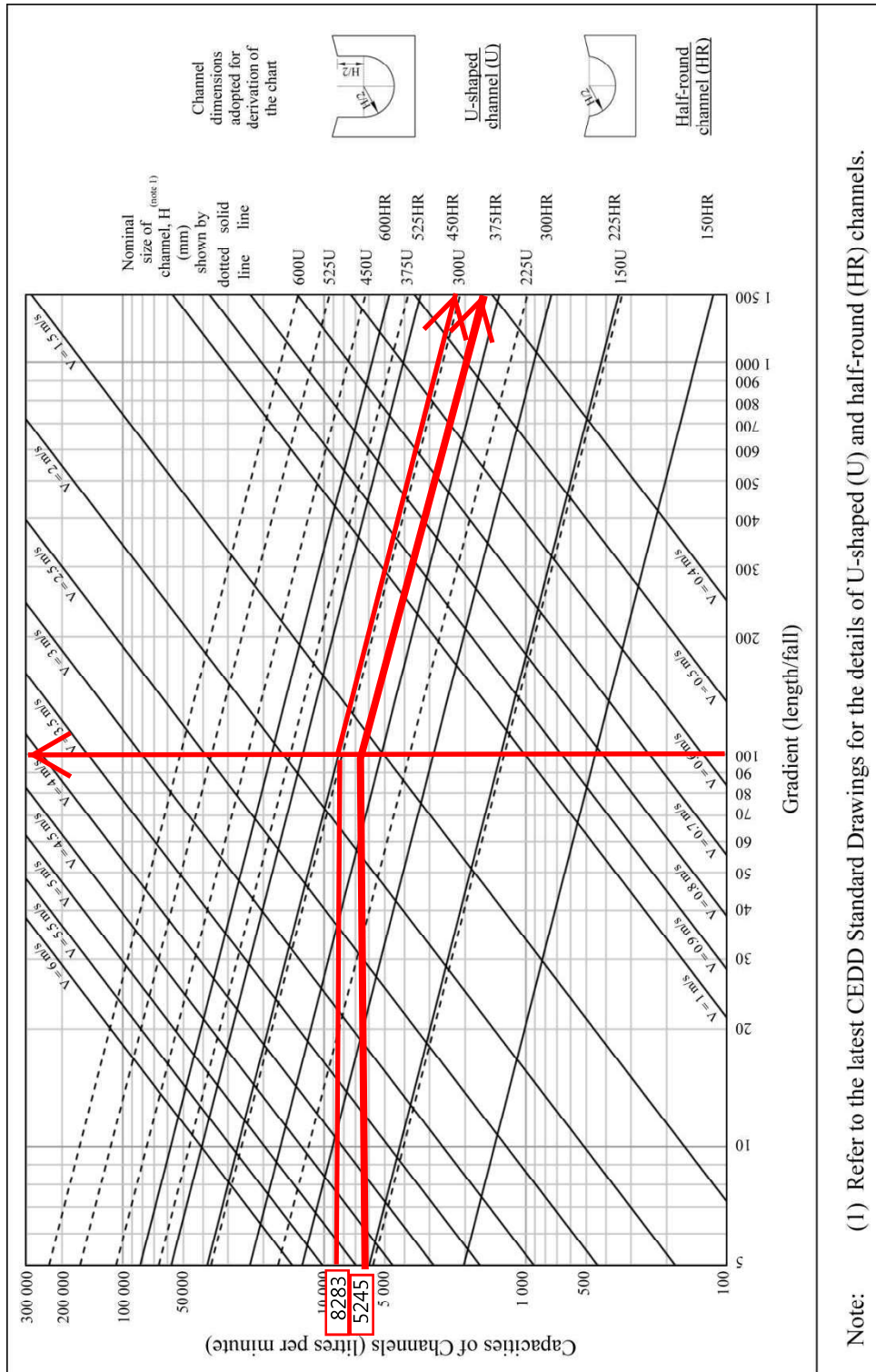
Dimensions of U - channel

Nominal size of channel H (mm)	Thickness t (mm)	Thickness b (mm)
225 to 600	150	150
675 to 1200	175	225

Figure 8.11 - Typical U-channel Details

GEO Technical Guidance Note No. 43 (TGN 43)
Guidelines on Hydraulic Design of U-shaped and Half-round Channels on Slopes

Figure 1 - Chart for the rapid design of U-shaped and half-round channels up to 600 mm



Note: (1) Refer to the latest CEDD Standard Drawings for the details of U-shaped (U) and half-round (HR) channels.

Stormwater Drainage Manual

CORRIGENDUM No. 1/2024 (26 March 2024)

- (a) Section 4.3.3
Intensity-
Duration-
Frequency
(IDF)
Relationship

Replace the Section with the following:

The rainfall statistics at HKO Headquarters* are recommended for general application (except Tai Mo Shan area, West Lantau area and North District area) because of its long-term and good quality records. The recommended IDF Relationship is based on the GEV distribution model, which is the best-fit model for different rainstorm durations on average and also adopted by HKO, in the frequency analysis of the annual maximum rainfall recorded at HKO Headquarters*.

For Tai Mo Shan, West Lantau and North District areas, it is recommended to adopt the annual maximum rainfall for various durations recorded by the local rain gauges within the 3 areas in the statistical analysis. The distribution models which fit the respective durations the best are applied and regional frequency analysis of extreme rainfall has also been employed to develop the IDF Relationships.

Non-stationary extreme value analysis models accounting for climate change impacts on extreme rainfall¹ and consideration for stochastic nature of rainfall were taken into account when determining the IDF Relationships. These relationships are presented in Tables 2a, 2b, 2c and 2d and Figures 4a, 4b, 4c and 4d for various durations not exceeding 4 hours.

The IDF data can also be expressed by the following algebraic equation for easy application:

$$i = \frac{a}{(t_d + b)^c}$$

where i = extreme mean intensity in mm/hr,
 t_d = duration in minutes ($t_d \leq 240$), and
 a, b, c = storm constants given in Tables 3a, 3b, 3c and 3d.

* See Notes 2 & 3 of Table 2a

¹IPCC AR6 Projection Reference Period (1995- 2014) is adopted as the reference period

For durations exceeding 4 hours, the rainfall depth instead of the mean intensity is normally used. The Depth-Duration-Frequency (DDF) Relationships for duration exceeding 4 hours are given in Tables 4a, 4b, 4c and 4d. The IDF data can be generated by dividing rainfall depth with duration.

- (b) Table 2a,
Table 2d,
Table 3a,
Table 3d,
Table 4a,
Table 4d,
Table 5a,
Table 5d

Replace the listed tables below with the following pages:

Table 2a – Intensity-Duration-Frequency (IDF) Relationship of HKO Headquarters for durations not exceeding 240 minutes

Table 2d – Intensity-Duration-Frequency (IDF) Relationship of North District Area for durations not exceeding 240 minutes

Table 3a – Storm Constants for Different Return Periods of HKO Headquarters

Table 3d – Storm Constants for Different Return Periods of North District Area

Table 4a – Depth-Duration-Frequency (DDF) Relationship of HKO Headquarters for durations of more than 4 hours

Table 4d – Depth-Duration-Frequency (DDF) Relationship of North District Area for durations of more than 4 hours

Table 5a – Design Rainstorm Profile Intensity-Duration-Frequency Relationships of HKO Headquarters

Table 5d – Design Rainstorm Profile Intensity-Duration-Frequency Relationships of North District Area

Table 2a – Intensity-Duration-Frequency (IDF) Relationship of HKO Headquarters for durations not exceeding 240 minutes

Duration (min)	Extreme Intensity (mm/h) for various Return Periods T (year)									
	2	5	10	20	50	100	200	500	1000	
240**	31.5	41.6	48.5	55.1	63.9	70.6	77.3	86.3	93.2	
120++	50.4	66.0	75.7	84.7	95.9	104	112	121	128	
60++	72.5	93.5	107	119	134	145	155	168	178	
30++	93.3	115	128	139	153	162	170	180	187	
15++	116	138	151	163	176	185	194	204	211	
10*	131	155	169	181	195	204	212	222	229	
5*	157	185	200	212	226	235	242	251	257	
2*	191	223	239	252	265	273	280	287	291	
1*	217	251	268	280	293	300	306	312	315	
0.50*	242	279	296	309	320	327	332	337	339	
0.25+++	268	307	324	336	347	353	357	361	363	

- Notes:**
1. non-stationary GEV distribution analysis by assuming the location and scale parameters changing linearly over time and shape parameter remaining unchanged has been incorporated in the frequency analysis.
 2. ++ based on continuous rainfall recorded at HKO Headquarters (1947 – 2023).
 3. +++ based on Jardi rate-of-rainfall records at King's Park (1952 – 2015), and the 1-min OTT data at King's Park (2016 – 2023) scaled into the rate-of-rainfall.
 4. * distribution parameters are interpolated.
 5. ** based on hourly rainfall records at HKO Headquarters (1884 – 1939; 1947 – 2023).

Table 2d – Intensity-Duration-Frequency (IDF) Relationship of North District Area for durations not exceeding 240 minutes

Duration (min)	Extreme Intensity (mm/h) for various Return Periods T (year)									
	2	5	10	20	50	100	200			
240	29.0	38.2	44.5	50.7	59.1	65.6	72.3			
120	42.4	54.9	63.2	71.2	81.8	89.8	97.8			
60	62.0	77.1	86.1	94.3	104	111	118			
30	85.7	103	113	122	133	141	148			
15	108	129	141	151	164	173	182			
10	120	141	155	168	187	203	219			
5	139	162	177	192	214	231	251			

- Notes:**
1. based on continuous rainfall recorded at GEO rain gauges N05 (40 years), N34 (24 years), N46 (24 years), N33 (24 years), N35 (24 years), N36 (24 years), N45 (24 years) and HKO rain gauges EPC (31 years), SSH (20 years), TKL (38 years), R24 (40 years), R29 (39 years), R30_KAT (34 years), SEK (27 years) up to 2023.
 2. rainfall IDF relationships are derived from regional frequency analysis of extreme rainfall of local rain gauges.
 3. the trends of the extreme rainfalls observed at HKO Headquarters are used to infer the trends at other locations.

Table 3a – Storm Constants for Different Return Periods of HKO Headquarters

Return Period T (years)	2	5	10	20	50	100	200	500	1000
a	446.1	470.5	485.0	496.0	505.5	508.6	508.8	504.6	498.7
b	3.38	3.11	3.11	3.17	3.29	3.38	3.46	3.53	3.55
c	0.463	0.419	0.397	0.377	0.355	0.338	0.322	0.302	0.286

Table 3d – Storm Constants for Different Return Periods of North District Area

Return Period T (years)	2	5	10	20	50	100	200
a	439.1	448.1	454.9	462.3	474.6	486.6	501.4
b	4.10	3.67	3.44	3.21	2.90	2.67	2.45
c	0.484	0.437	0.412	0.392	0.371	0.358	0.348

Table 4a - Depth-Duration-Frequency (DDF) Relationship of HKO Headquarters
for durations of more than 4 hours

Duration	Extreme Depth (mm) for various Return Periods T(year)									
	2	5	10	20	50	100	200	500	1000	
31 days	715	918	1047	1166	1314	1422	1525	1656	1752	
15 days	515	675	775	866	979	1060	1138	1235	1306	
7 days	386	515	601	683	788	867	*1022	*1141	*1231	
5 days	333	461	550	638	756	*856	*975	*1101	*1199	
4 days	332	460	549	637	756	849	944	1076	1179	
3 days	310	424	501	576	673	748	823	923	1000	
2 days	268	366	432	496	580	645	709	796	862	
24 hours	225	304	360	417	495	558	623	714	787	
18 hours	201	272	323	375	448	507	570	659	731	
12 hours	175	237	282	330	397	453	514	601	674	
8 hours	152	200	235	271	322	364	408	472	524	
6 hours	141	185	216	248	291	326	362	413	453	

Notes:

1. non-stationary GEV distribution analysis by assuming the location and scale parameters changing linearly over time and shape parameter remaining unchanged has been incorporated in the frequency analysis.
2. based on hourly records measured at HKO Headquarters (1884 – 1939; 1947 – 2023)
3. the Intensity-Duration-Frequency (IDF) data can be generated from the above by dividing depth with duration
4. * rainfall depths are interpolated to ensure a physically reasonable rainfall IDF/DDF relationships.

Table 4d - Depth-Duration-Frequency (DDF) Relationship of North District Area for durations of more than 4 hours

Duration	Extreme Depth x (mm) for various Return Periods T(year)									
	2	5	10	20	50	100	200			
31 days	668	897	1088	1314	1692	2062	2530			
15 days	482	639	743	844	977	1082	1190			
7 days	384	502	573	636	714	770	876			
5 days	357	475	546	610	688	747	810			
4 days	337	452	523	588	670	731	790			
3 days	314	416	480	538	613	668	723			
2 days	271	361	419	473	543	597	650			
24 hours	210	275	321	368	431	483	536			
18 hours	192	248	289	332	395	450	511			
12 hours	168	221	258	296	347	389	432			
8 hours	147	189	218	247	284	314	344			
6 hours	133	173	200	227	264	293	323			

- Notes:**
1. based on continuous rainfall recorded at GEO rain gauges N05 (40 years), N34 (24 years), N46 (24 years), N33 (24 years), N35 (24 years), N36 (24 years), N45 (24 years) and HKO rain gauges EPC (31 years), SSH (20 years), TKL (38 years), R24 (40 years), R29 (39 years), R30_KAT (34 years), SEK (27 years) up to 2023
 2. rainfall IDF relationships are derived from regional frequency analysis of extreme rainfall of local rain gauges
 3. the trends of the extreme rainfalls observed at HKO Headquarters are used to infer the trends at other locations.
 4. * rainfall depths are interpolated to ensure a physically reasonable rainfall IDF/DDF relationships.

Table 5a – Design Rainstorm Profile Intensity-Duration-Frequency Relationships of HKO Headquarters

Duration Interval (min)	*Rate of Rainfall (mm/hr) for Return Periods T (years)				
	2	10	50	200	1000
-0.5 – 0.5	225	277	301	314	323
0.5 – 1.5	171	216	244	261	275
1.5 – 2.5	133	174	202	221	238
2.5 – 3.5	112	149	177	197	215
3.5 – 4.5	98	133	160	180	199
4.5 – 5.5	88	122	148	168	187
5.5 – 6.5	80	113	139	158	177
6.5 – 7.5	75	106	131	150	170
7.5 – 8.5	70	100	125	144	163
8.5 – 9.5	66	96	119	138	158
9.5 – 10.5	63	92	115	134	153
10.5 – 11.5	60	88	111	130	149
11.5 – 12.5	57	85	108	126	145
12.5 – 13.5	55	82	104	123	142
13.5 – 14.5	53	80	102	120	139
14.5 – 15.5	51	77	99	117	136
15.5 – 16.5	50	75	97	114	133
16.5 – 17.5	48	74	95	112	131
17.5 – 18.5	47	72	93	110	129
18.5 – 19.5	46	70	91	108	127
19.5 – 20.5	45	69	89	106	125
20.5 – 21.5	44	67	88	105	123
21.5 – 22.5	43	66	86	103	122
22.5 – 23.5	42	65	85	101	120
23.5 – 24.5	41	64	83	100	118
24.5 – 25.5	40	63	82	99	117
25.5 – 26.5	39	62	81	97	116
26.5 – 27.5	39	61	80	96	114
27.5 – 28.5	38	60	79	95	113
28.5 – 29.5	37	59	78	94	112
29.5 – 30.5	37	58	77	93	111
30.5 – 31.5	36	57	76	92	110
31.5 – 32.5	36	57	75	91	109
32.5 – 33.5	35	56	74	90	108
33.5 – 34.5	35	55	74	89	107
34.5 – 35.5	34	55	73	88	106
35.5 – 36.5	34	54	72	88	105
36.5 – 37.5	33	53	71	87	104
37.5 – 38.5	33	53	71	86	104
38.5 – 39.5	32	52	70	85	103
39.5 – 40.5	32	52	69	85	102
40.5 – 41.5	32	51	69	84	101
41.5 – 42.5	31	51	68	83	101
42.5 – 43.5	31	50	68	83	100
43.5 – 44.5	31	50	67	82	99
44.5 – 45.5	30	49	66	81	99
45.5 – 46.5	30	49	66	81	98
46.5 – 47.5	30	49	65	80	97
47.5 – 48.5	29	48	65	80	97
48.5 – 49.5	29	48	64	79	96
49.5 – 50.5	29	47	64	79	96
50.5 – 51.5	28	47	63	78	95
51.5 – 52.5	28	47	63	78	95
52.5 – 53.5	28	46	63	77	94
53.5 – 54.5	28	46	62	77	94
54.5 – 55.5	27	46	62	76	93
55.5 – 56.5	27	45	61	76	93
56.5 – 57.5	27	45	61	75	92
57.5 – 58.5	27	45	61	75	92
58.5 – 59.5	27	44	60	75	91
59.5 – 60.5	26	44	60	74	91

Duration Interval (min)	*Rate of Rainfall (mm/hr) for Return Periods T (years)				
	2	10	50	200	1000
60.5 – 61.5	26	44	60	74	90
61.5 – 62.5	26	43	59	73	90
62.5 – 63.5	26	43	59	73	90
63.5 – 64.5	26	43	59	73	89
64.5 – 65.5	25	43	58	72	89
65.5 – 66.5	25	42	58	72	88
66.5 – 67.5	25	42	58	72	88
67.5 – 68.5	25	42	57	71	88
68.5 – 69.5	25	42	57	71	87
69.5 – 70.5	25	41	57	71	87
70.5 – 71.5	24	41	56	70	87
71.5 – 72.5	24	41	56	70	86
72.5 – 73.5	24	41	56	70	86
73.5 – 74.5	24	40	56	69	86
74.5 – 75.5	24	40	55	69	85
75.5 – 76.5	24	40	55	69	85
76.5 – 77.5	23	40	55	68	85
77.5 – 78.5	23	40	55	68	84
78.5 – 79.5	23	39	54	68	84
79.5 – 80.5	23	39	54	68	84
80.5 – 81.5	23	39	54	67	83
81.5 – 82.5	23	39	54	67	83
82.5 – 83.5	23	39	53	67	83
83.5 – 84.5	23	38	53	66	82
84.5 – 85.5	22	38	53	66	82
85.5 – 86.5	22	38	53	66	82
86.5 – 87.5	22	38	52	66	82
87.5 – 88.5	22	38	52	65	81
88.5 – 89.5	22	38	52	65	81
89.5 – 90.5	22	37	52	65	81
90.5 – 91.5	22	37	52	65	81
91.5 – 92.5	22	37	51	65	80
92.5 – 93.5	21	37	51	64	80
93.5 – 94.5	21	37	51	64	80
94.5 – 95.5	21	37	51	64	80
95.5 – 96.5	21	36	51	64	79
96.5 – 97.5	21	36	50	63	79
97.5 – 98.5	21	36	50	63	79
98.5 – 99.5	21	36	50	63	79
99.5 – 100.5	21	36	50	63	78
100.5 – 101.5	21	36	50	63	78
101.5 – 102.5	21	36	50	62	78
102.5 – 103.5	20	35	49	62	78
103.5 – 104.5	20	35	49	62	78
104.5 – 105.5	20	35	49	62	77
105.5 – 106.5	20	35	49	62	77
106.5 – 107.5	20	35	49	61	77
107.5 – 108.5	20	35	49	61	77
108.5 – 109.5	20	35	48	61	76
109.5 – 110.5	20	34	48	61	76
110.5 – 111.5	20	34	48	61	76
111.5 – 112.5	20	34	48	61	76
112.5 – 113.5	20	34	48	60	76
113.5 – 114.5	20	34	48	60	75
114.5 – 115.5	19	34	47	60	75
115.5 – 116.5	19	34	47	60	75
116.5 – 117.5	19	34	47	60	75
117.5 – 118.5	19	34	47	60	75
118.5 – 119.5	19	33	47	59	75
119.5 – 120.5	19	33	47	59	74
120.5 – 121.5	19	33	47	59	74

Note: * Rate of Rainfall is the average value over consecutive time intervals

Table 5d – Design Rainstorm Profile Intensity-Duration-Frequency Relationships of North District Area

Duration Interval (min)	*Rate of Rainfall (mm/hr) for Return Periods T (years)			
	2	10	50	200
-0.5 – 0.5	200	246	286	326
0.5 – 1.5	155	194	225	254
1.5 – 2.5	122	156	183	206
2.5 – 3.5	102	133	158	180
3.5 – 4.5	89	119	143	163
4.5 – 5.5	80	108	131	150
5.5 – 6.5	73	100	122	141
6.5 – 7.5	68	94	115	133
7.5 – 8.5	63	89	109	127
8.5 – 9.5	59	84	105	122
9.5 – 10.5	56	80	100	117
10.5 – 11.5	54	77	97	113
11.5 – 12.5	51	74	94	110
12.5 – 13.5	49	72	91	107
13.5 – 14.5	47	70	88	104
14.5 – 15.5	46	68	86	101
15.5 – 16.5	44	66	84	99
16.5 – 17.5	43	64	82	97
17.5 – 18.5	42	62	80	95
18.5 – 19.5	40	61	78	93
19.5 – 20.5	39	60	77	91
20.5 – 21.5	38	58	76	90
21.5 – 22.5	38	57	74	88
22.5 – 23.5	37	56	73	87
23.5 – 24.5	36	55	72	86
24.5 – 25.5	35	54	71	84
25.5 – 26.5	34	53	70	83
26.5 – 27.5	34	53	69	82
27.5 – 28.5	33	52	68	81
28.5 – 29.5	33	51	67	80
29.5 – 30.5	32	50	66	79
30.5 – 31.5	32	50	65	78
31.5 – 32.5	31	49	64	77
32.5 – 33.5	31	48	64	77
33.5 – 34.5	30	48	63	76
34.5 – 35.5	30	47	62	75
35.5 – 36.5	29	46	62	74
36.5 – 37.5	29	46	61	74
37.5 – 38.5	28	45	60	73
38.5 – 39.5	28	45	60	72
39.5 – 40.5	28	44	59	72
40.5 – 41.5	27	44	59	71
41.5 – 42.5	27	44	58	70
42.5 – 43.5	27	43	58	70
43.5 – 44.5	26	43	57	69
44.5 – 45.5	26	42	57	69
45.5 – 46.5	26	42	56	68
46.5 – 47.5	26	42	56	68
47.5 – 48.5	25	41	55	67
48.5 – 49.5	25	41	55	67
49.5 – 50.5	25	40	54	66
50.5 – 51.5	25	40	54	66
51.5 – 52.5	24	40	54	65
52.5 – 53.5	24	39	53	65
53.5 – 54.5	24	39	53	64
54.5 – 55.5	24	39	52	64
55.5 – 56.5	23	39	52	64
56.5 – 57.5	23	38	52	63
57.5 – 58.5	23	38	51	63
58.5 – 59.5	23	38	51	62
59.5 – 60.5	23	37	51	62

Duration Interval (min)	*Rate of Rainfall (mm/hr) for Return Periods T (years)			
	2	10	50	200
60.5 – 61.5	22	37	50	62
61.5 – 62.5	22	37	50	61
62.5 – 63.5	22	37	50	61
63.5 – 64.5	22	36	50	61
64.5 – 65.5	22	36	49	60
65.5 – 66.5	22	36	49	60
66.5 – 67.5	21	36	49	60
67.5 – 68.5	21	36	48	59
68.5 – 69.5	21	35	48	59
69.5 – 70.5	21	35	48	59
70.5 – 71.5	21	35	48	58
71.5 – 72.5	21	35	47	58
72.5 – 73.5	21	35	47	58
73.5 – 74.5	20	34	47	58
74.5 – 75.5	20	34	47	57
75.5 – 76.5	20	34	46	57
76.5 – 77.5	20	34	46	57
77.5 – 78.5	20	34	46	57
78.5 – 79.5	20	33	46	56
79.5 – 80.5	20	33	46	56
80.5 – 81.5	20	33	45	56
81.5 – 82.5	19	33	45	56
82.5 – 83.5	19	33	45	55
83.5 – 84.5	19	33	45	55
84.5 – 85.5	19	32	45	55
85.5 – 86.5	19	32	44	55
86.5 – 87.5	19	32	44	54
87.5 – 88.5	19	32	44	54
88.5 – 89.5	19	32	44	54
89.5 – 90.5	19	32	44	54
90.5 – 91.5	18	32	43	54
91.5 – 92.5	18	31	43	53
92.5 – 93.5	18	31	43	53
93.5 – 94.5	18	31	43	53
94.5 – 95.5	18	31	43	53
95.5 – 96.5	18	31	43	53
96.5 – 97.5	18	31	42	52
97.5 – 98.5	18	31	42	52
98.5 – 99.5	18	30	42	52
99.5 – 100.5	18	30	42	52
100.5 – 101.5	18	30	42	52
101.5 – 102.5	17	30	42	51
102.5 – 103.5	17	30	41	51
103.5 – 104.5	17	30	41	51
104.5 – 105.5	17	30	41	51
105.5 – 106.5	17	30	41	51
106.5 – 107.5	17	29	41	51
107.5 – 108.5	17	29	41	50
108.5 – 109.5	17	29	41	50
109.5 – 110.5	17	29	40	50
110.5 – 111.5	17	29	40	50
111.5 – 112.5	17	29	40	50
112.5 – 113.5	17	29	40	50
113.5 – 114.5	16	29	40	50
114.5 – 115.5	16	29	40	49
115.5 – 116.5	16	28	40	49
116.5 – 117.5	16	28	40	49
117.5 – 118.5	16	28	39	49
118.5 – 119.5	16	28	39	49
119.5 – 120.5	16	28	39	49
120.5 – 121.5	16	28	39	48

Note: * Rate of Rainfall is the average value over consecutive time intervals

- (c) Table 2b
Intensity-
Duration-
Frequency
(IDF)
Relationship
of Tai Mo
Shan Area for
durations not
exceeding 240
minutes
- Replace the following notes:**
1. based on continuous rainfall recorded at GEO rain gauges N14 (40 years), N36 (24 years), N37 (24 years) & N40 (24 years) up to 2023
- (d) Table 2c
Intensity-
Duration-
Frequency
(IDF)
Relationship
of West
Lantau Area
for durations
not exceeding
240 minutes
- Replace the following notes:**
1. based on continuous rainfall recorded at GEO rain gauges N17 (33 years), N19 (24 years) & N21 (24 years) up to 2023
- (e) Table 4b
Depth-
Duration-
Frequency
(DDF)
Relationship
of Tai Mo
Shan Area for
durations of
more than 4
hours
- Replace the following notes:**
1. based on continuous rainfall recorded at GEO rain gauges N14 (40 years), N36 (24 years), N37 (24 years) & N40 (24 years) up to 2023

(f) Table 4c
Depth-
Duration-
Frequency
(DDF)
Relationship
of West
Lantau Area
for durations
of more than 4
hours

Replace the following notes:

1. based on continuous rainfall recorded at GEO rain gauges N17 (33 years), N19 (24 years) & N21 (24 years) up to 2023

(g) Figure 4a,
Figure 4d,
Figure 5a,
Figure 5d

Replace the listed figures below with the following pages:

Figure 4a – Intensity-Duration-Frequency Curves of HKO Headquarters (for durations not exceeding 4 hours)

Figure 4d – Intensity-Duration-Frequency Curves of North District Area (for durations not exceeding 4 hours)

Figure 5a – Synthetic Rainstorm Profiles of HKO Headquarters

Figure 5d – Synthetic Rainstorm Profiles of North District Area

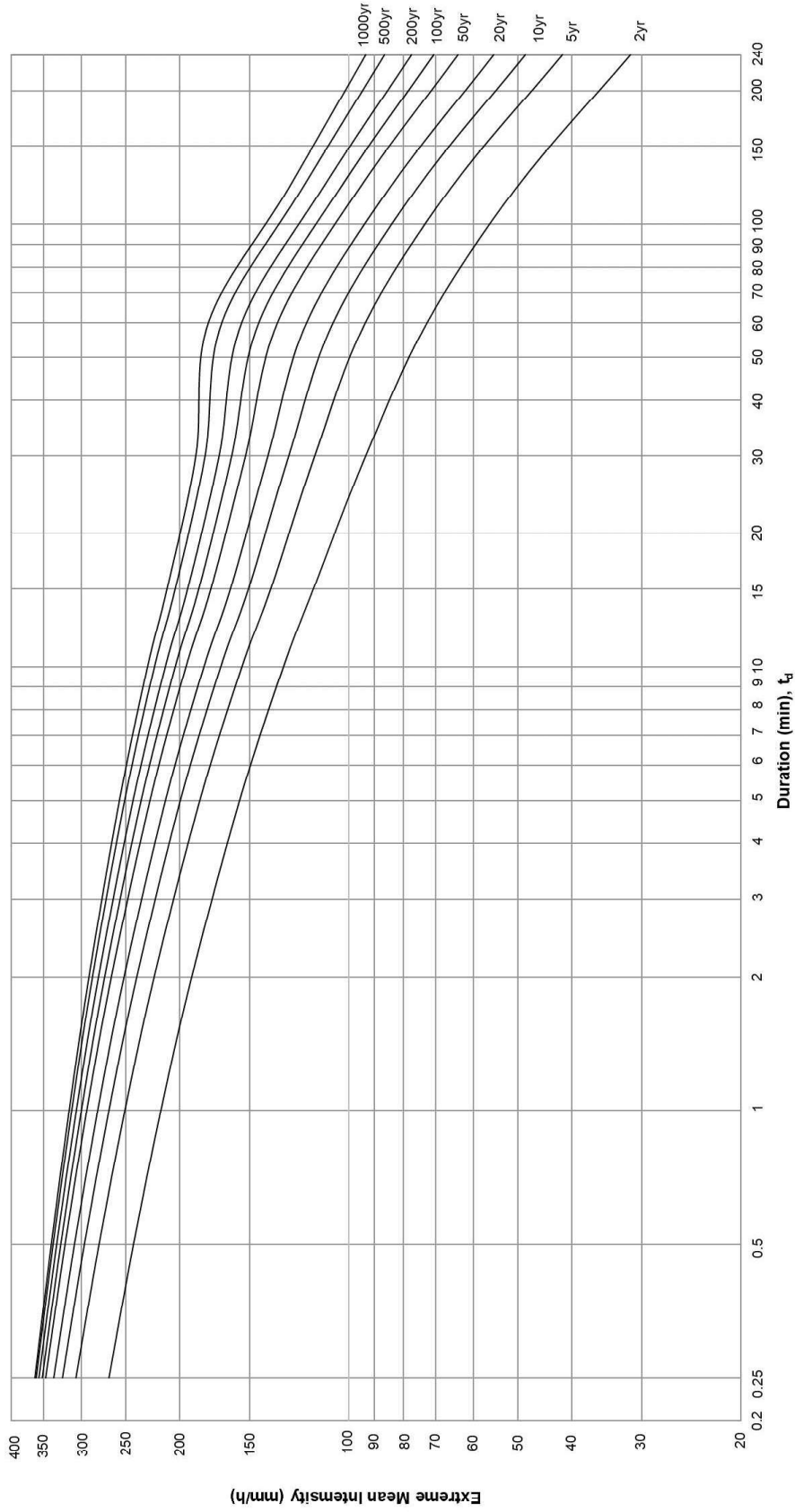


Figure 4a – Intensity-Duration-Frequency Curves of HKO Headquarters
(for durations not exceeding 4 hours)

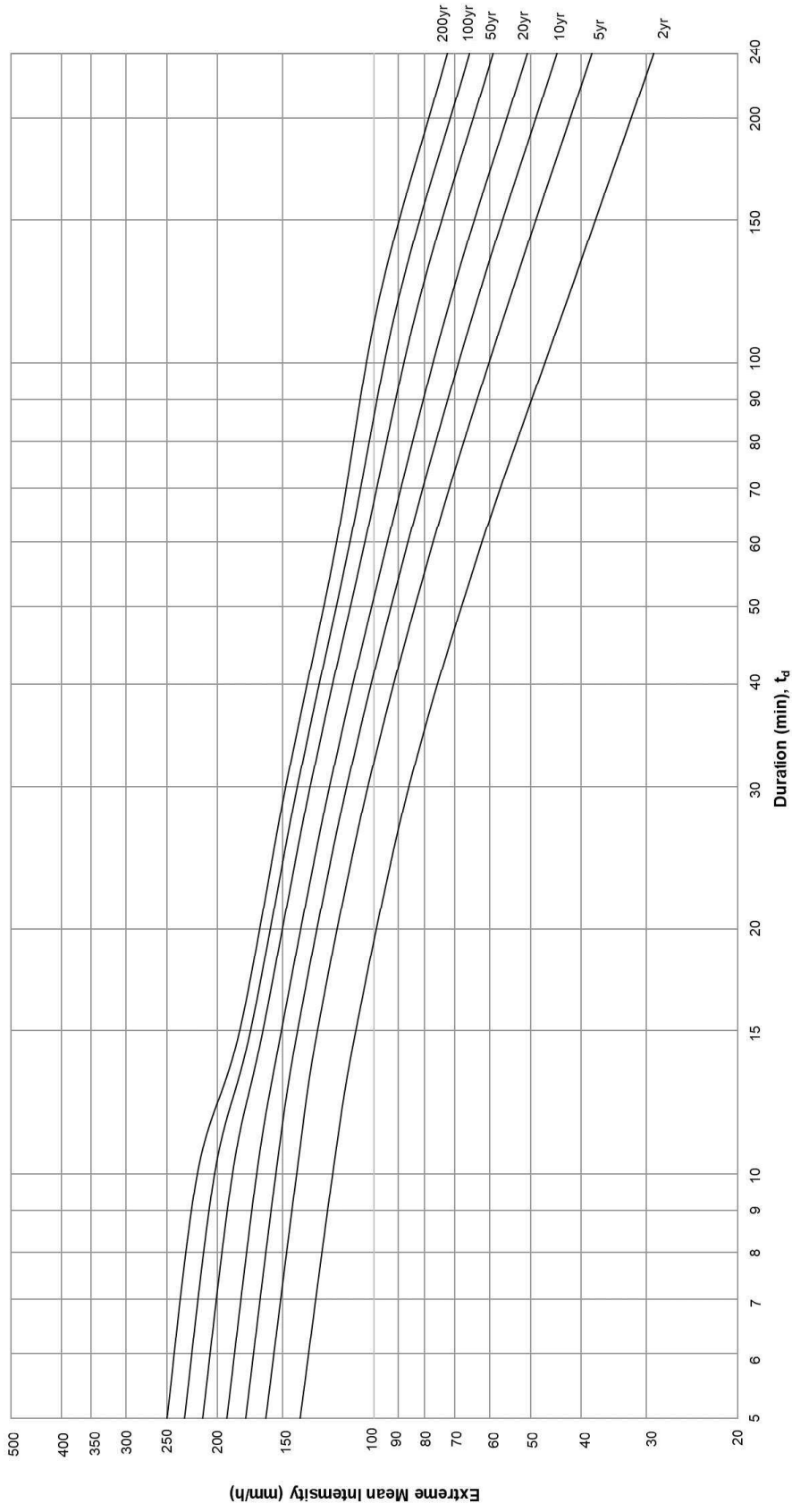


Figure 4d — Intensity-Duration-Frequency Curves of North District Area
(for durations not exceeding 4 hours)

Figure 5a – Synthetic Rainstorm Profiles of HKO Headquarters

HKO Headquarters Synthetic Rainstorm Profiles

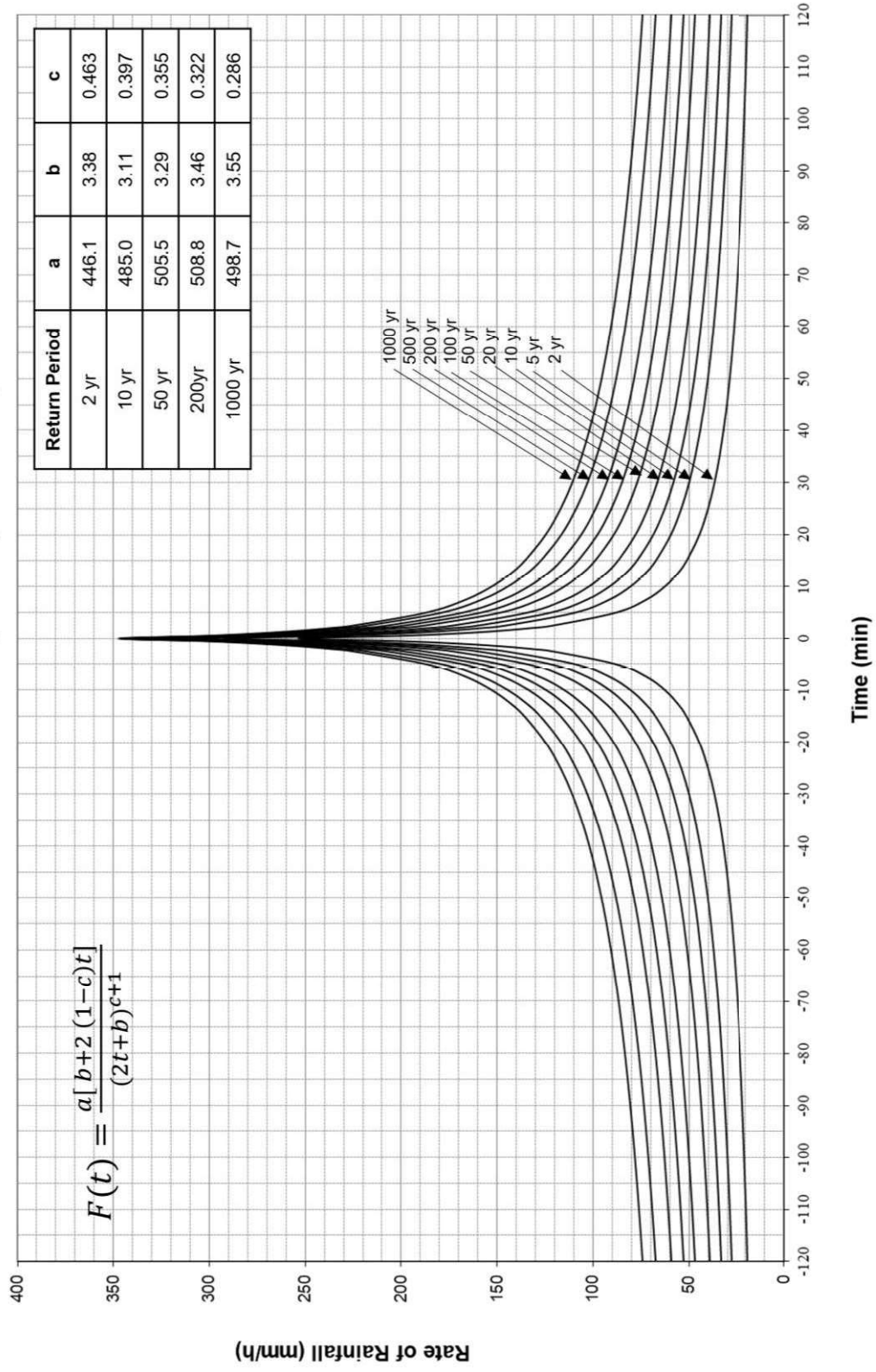


Figure 5d – Synthetic Rainstorm Profiles of North District Area

