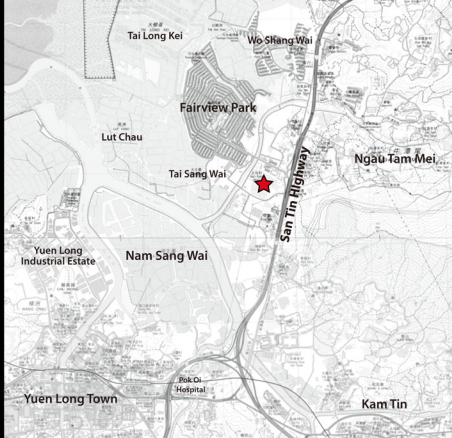
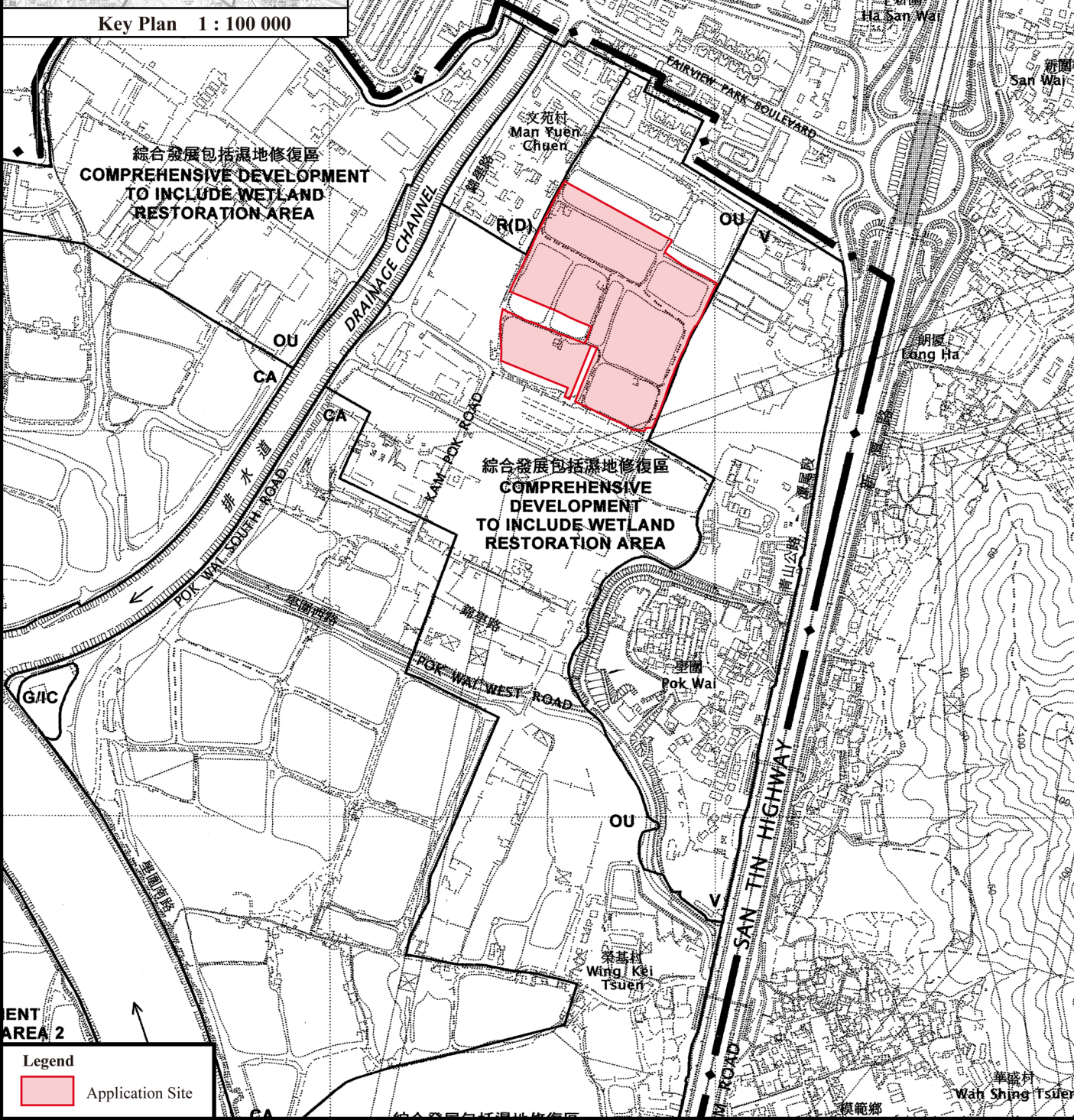


Figures



Key Plan 1 : 100 000



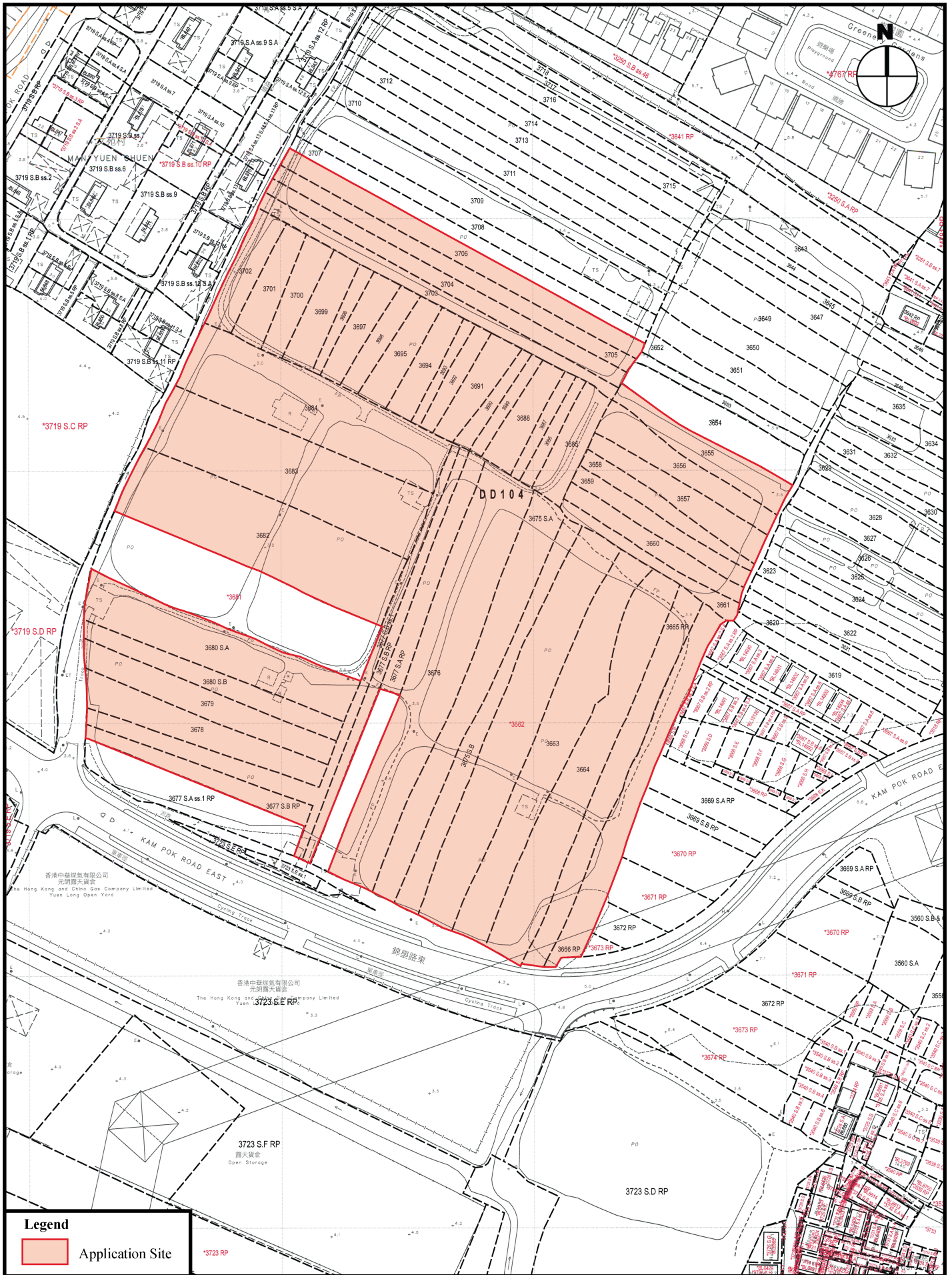
Legend

Application Site

Location of the Application Site
 (Extracted from the Approved
 Nam Sang Wai Outline Zoning Plan
 No. S/YL-NSW/8))

Figure 1
 1 : 7 500

VISION
 弘域城市規劃顧問有限公司
 VISION PLANNING CONSULTANTS LTD.
 香港北角觀鰲街 9-23 號秀明中心 20 樓 C 室
 Unit C, 20/F., Seabright Plaza, 9-23 Shell Street, North Point, Hong Kong.
 Tel : (852) 2566 9988 Fax: (852) 2566 9978 E-mail: vision@visionplanning.com.hk



Legend

Application Site

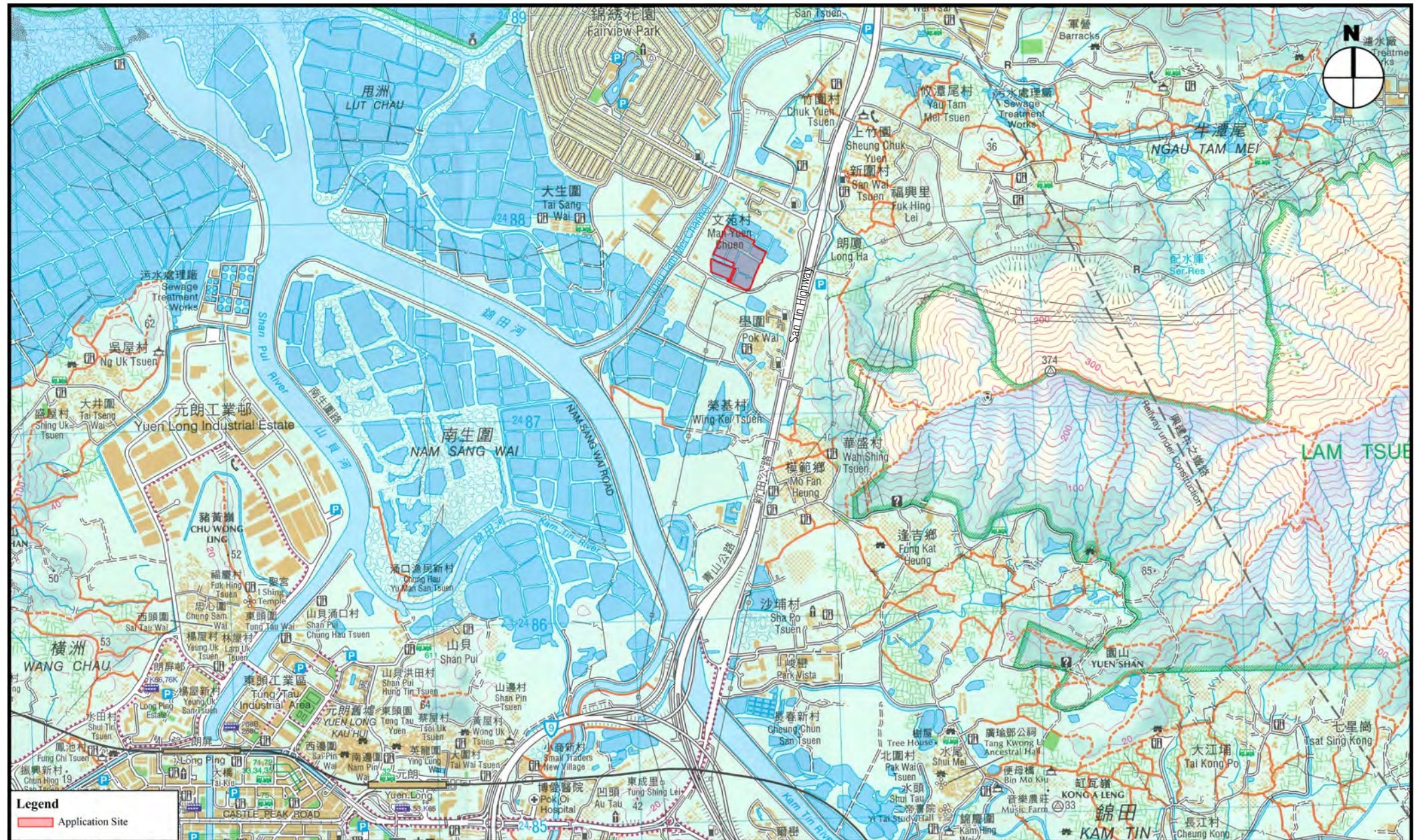
Lot Index Plan
 (Extracted from Lot Index Plan
 No. ags_S00000041787_0001)

Figure 2

1 : 2 000

VISION

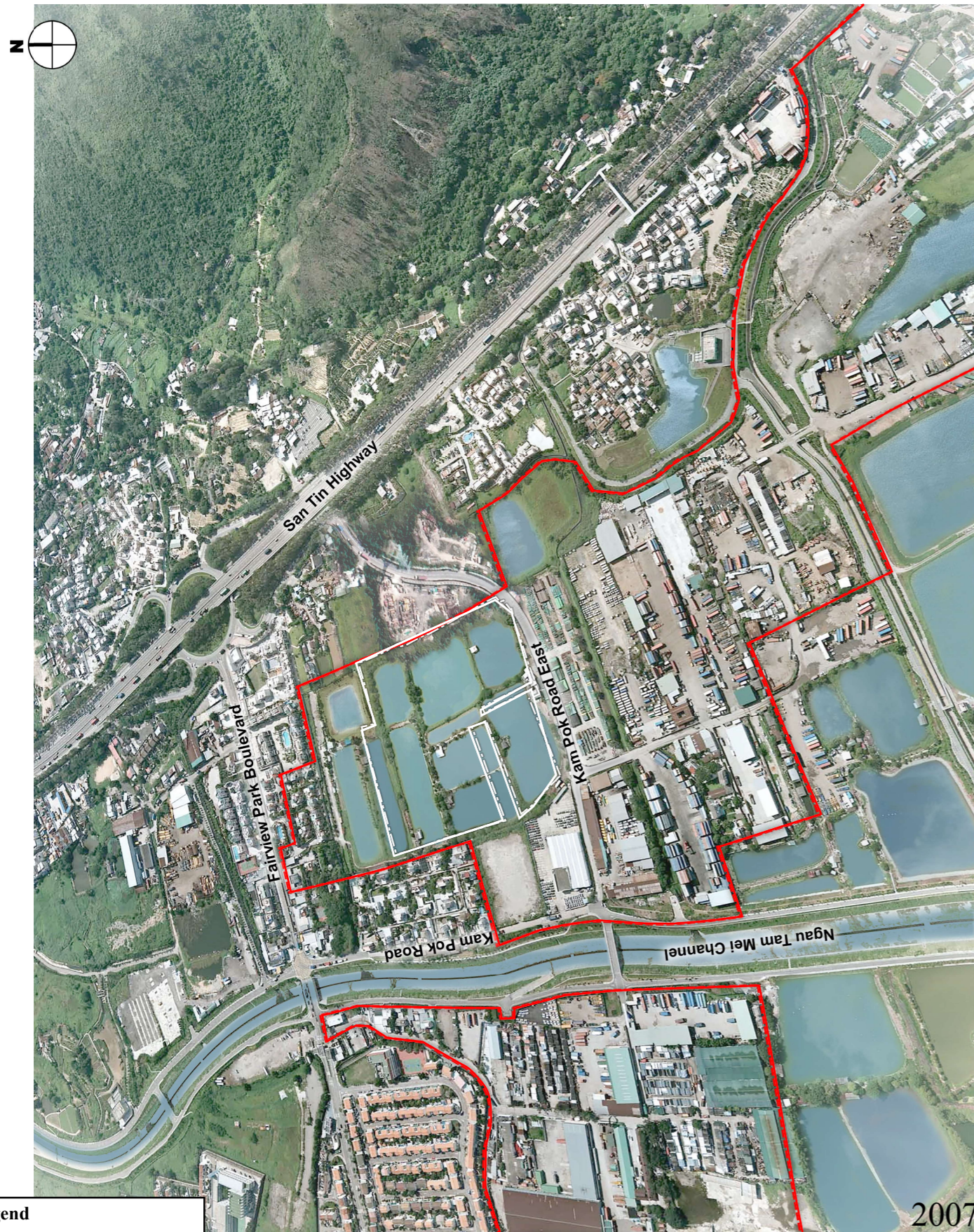
弘域城市規劃顧問有限公司
 VISION PLANNING CONSULTANTS LTD.
 香港北角鏡環街 9-23 號秀明中心 20 樓 C 室
 Unit C, 20/F., Seabright Plaza, 9-23 Shell Street, North Point, Hong Kong.
 Tel : (852) 2566 9988 Fax: (852) 2566 9978 E-mail: vision@visionplanning.com.hk



District-wide Context of the Application Site
 (Extract from the Map of North West New Territories (Country Series)
 issued by the Survey and Mapping Office, Lands Department (2017))

Figure 3

1: 25 000



Legend
 Application Site
 "OU(CDWRA)" Zone

2007



Legend
 Application Site
 "OU(CDWRA)" Zone

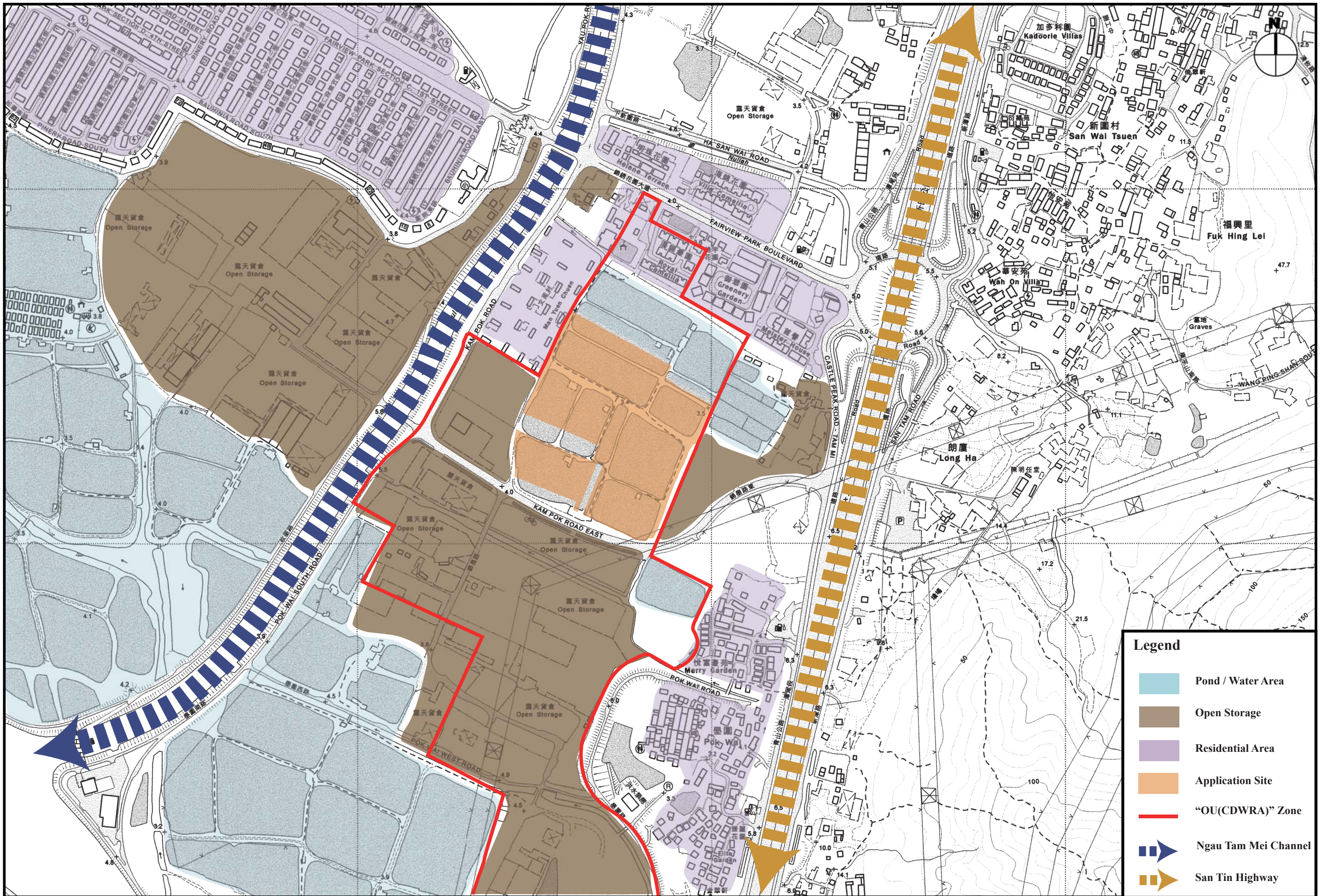
2022

Aerial Photo of the Applicant Site and its Surroundings (2007 and 2022)
 (Aerial Photo No. CW76275 taken on 5 June 2007 and No. E146407C taken on 19 January 2022)

VISION
 弘域城市規劃顧問有限公司
 VISION PLANNING CONSULTANTS LTD.
 香港北角觀熾街 9-23 號秀明中心 20 樓 C 室
 Unit C, 20/F, Seabright Plaza, 9-23 Shell Street, North Point, Hong Kong.
 Tel : (852) 2566 9988 Fax: (852) 2566 9978 E-mail: vision@visionplanning.com.hk

Figure 4

N.T.S



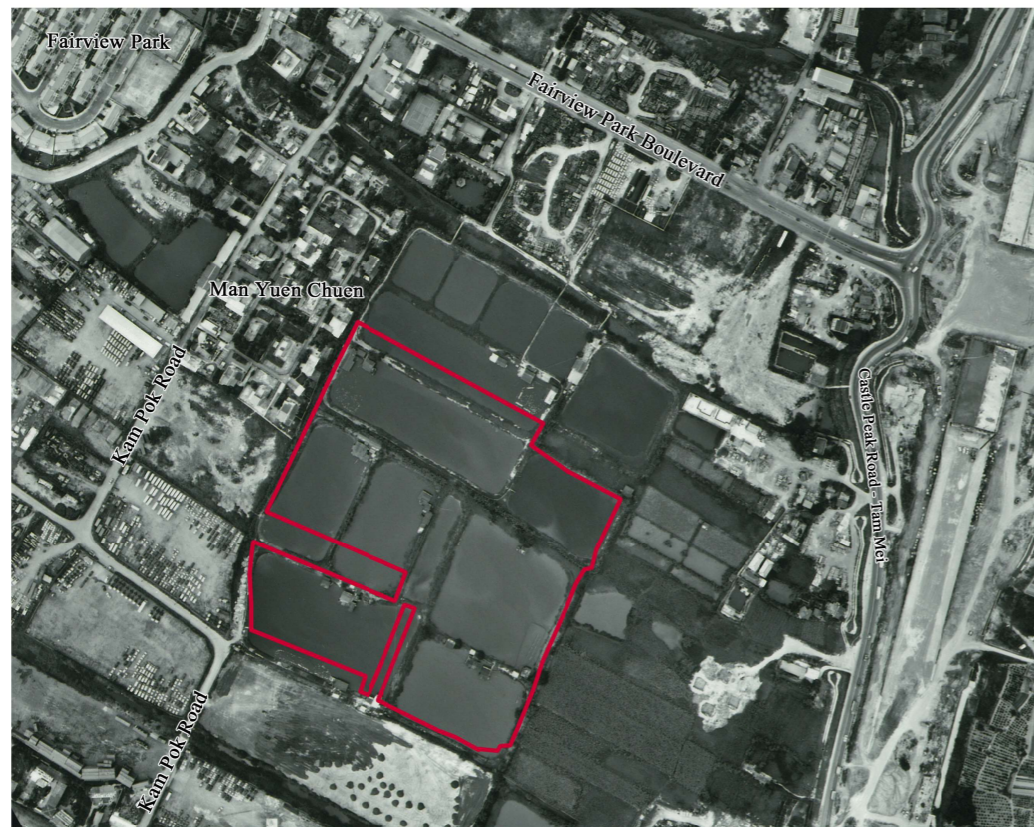
Legend

- Pond / Water Area
- Open Storage
- Residential Area
- Application Site
- "OU(CDWRA)" Zone
- Ngau Tam Mei Channel
- San Tin Highway

Existing Land Use Pattern around Application Site
 (Extracted from the Government Survey Sheet No. 2-SE-C)

VISION
 弘域城市規劃顧問有限公司
 VISION PLANNING CONSULTANTS LTD.
 香港北角蠟殼街 9-23 號秀明中心 20 樓 C 室
 Unit C, 20/F., Seabright Plaza, 9-23 Shell Street, North Point, Hong Kong.
 Tel : (852) 2566 9988 Fax: (852) 2566 9978 E-mail: vision@visionplanning.com.hk

Figure 5
 1 : 5 000



Picture A Aerial Photo Taken on 27 July 1990



Picture B Aerial Photo Taken on 10 July 1998




Picture C Aerial Photo Taken on 23 December 2009



Picture D Aerial Photo Taken on 8 March 2022

Legend

 Application Site Boundary

Aerial Photos of the Application Site (1990, 1998, 2009 and 2022)

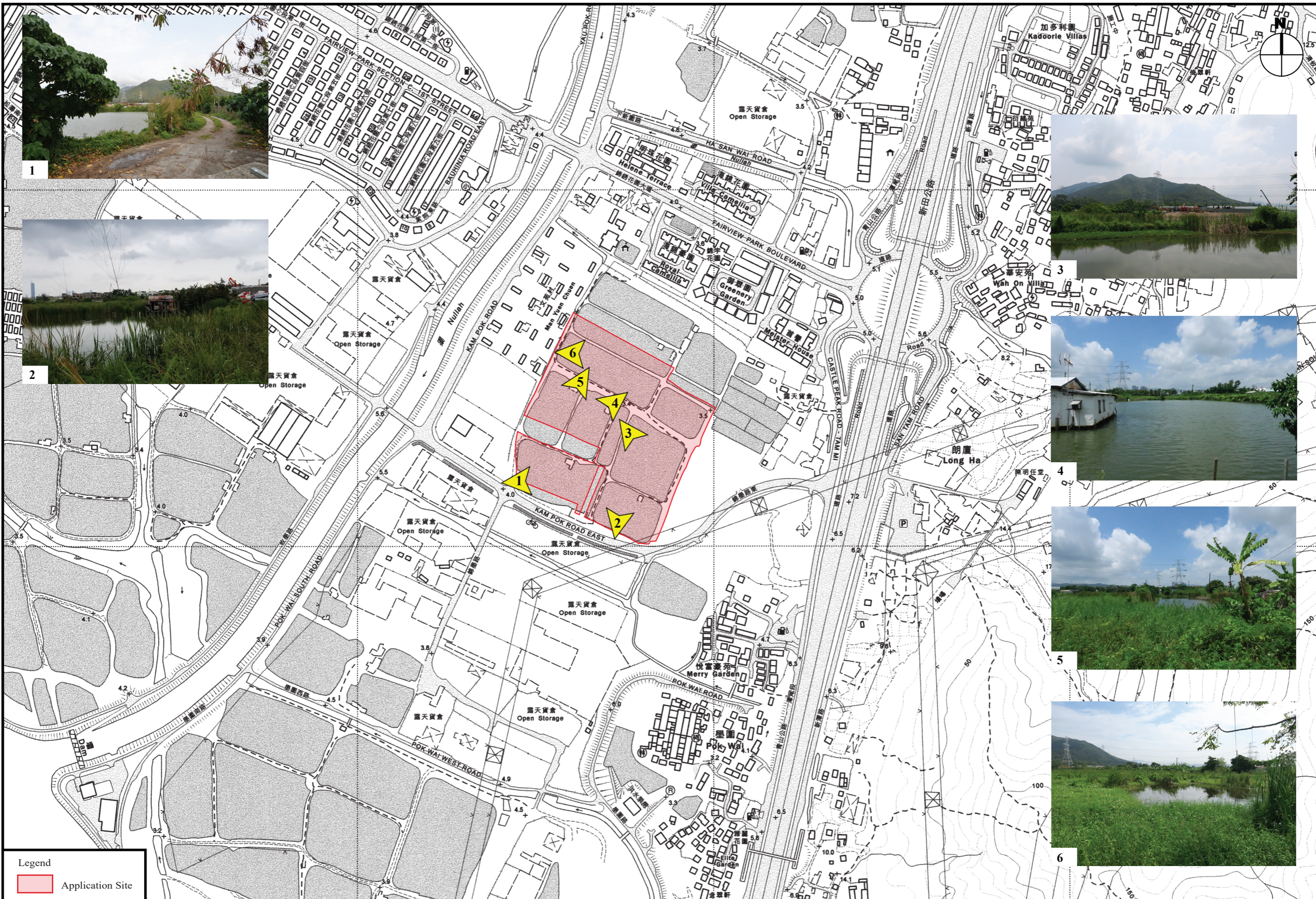
(AerialPhoto No. A21977 taken on 27 July 1990; CN20186 taken on 10 July 1998; CW85068 taken on 23 December 2009; and E153015C taken on 8 March 2022)



弘域城市規劃顧問有限公司
VISION PLANNING CONSULTANTS LTD.
香港北角銀禧街 9-23 號秀明中心 20 樓 C 室
Unit C, 20/F, Seabright Plaza, 9-23 Shell Street, North Point, Hong Kong.
Tel : (852) 2566 9988 Fax: (852) 2566 9978 E-mail: vision@visionplanning.com.hk

Figure 6

N. T. S.



Legend
 Application Site

Existing Conditions of the Application Site
 (Extracted from the Government Survey Sheet No. 2-SE-C)

VISION

弘域城市規劃顧問有限公司
 VISION PLANNING CONSULTANTS LTD.
 香港北角規規街 9-23 號秀明中心 20 樓 C 室
 Unit C, 20/F., Seabright Plaza, 9-23 Shell Street, North Point, Hong Kong.
 Tel : (852) 2566 9988 Fax: (852) 2566 9978 E-mail: vision@visionplanning.com.hk

Figure 7

1 : 5 000



Legend
 Application Site

Existing Conditions around the Site
 (Extracted from the Government Survey Sheet No. 2-SE-C)



弘域城市規劃顧問有限公司
 VISION PLANNING CONSULTANTS LTD.
 香港北角維多利亞道9-23號秀明中心20樓C室
 Unit C, 20/F., Seabright Plaza, 9-23 Shei Street, North Point, Hong Kong.
 Tel: (852) 2566 9988 Fax: (852) 2564 9978 E-mail: vision@visionplanning.com.hk

Figure 8

1 : 5 000