

- NOTES :**
1. ALL DIMENSIONS ARE IN MILLIMETRES UNLESS OTHERWISE STATED.
 2. ALL LEVELS ARE IN MPD (METRE ABOVE HONG KONG PRINCIPAL DATUM).

- LEGEND :**
- [Dashed line] SITE BOUNDARY
 - [Double line with dashes] NOISE BARRIER
 - [Solid line] FIRE BREAKER
 - [Line with cross-ticks] LSP-3B SHEET PILE

Z	AS BUILT	OCT 13	SIGNED W.K. FONG (E/2011-3)
E	SHEET PILE ADDED	DEC 12	SIGNED W.K. FONG (E/2012-3)
D	GENERAL REVISION	JUN 12	SIGNED W.K. FONG (E/2012-3)
C	GENERAL REVISION	JAN 12	SIGNED W.K. FONG (E/2012-3)
B	GENERAL REVISION	JAN 12	SIGNED W.K. FONG (E/2012-3)
A	GENERAL REVISION	NOV 11	JM
Rev.	Description of Revision	Date	Ckd.

Client
 路政署 (工程部)
HIGHWAYS DEPARTMENT
WORKS DIVISION

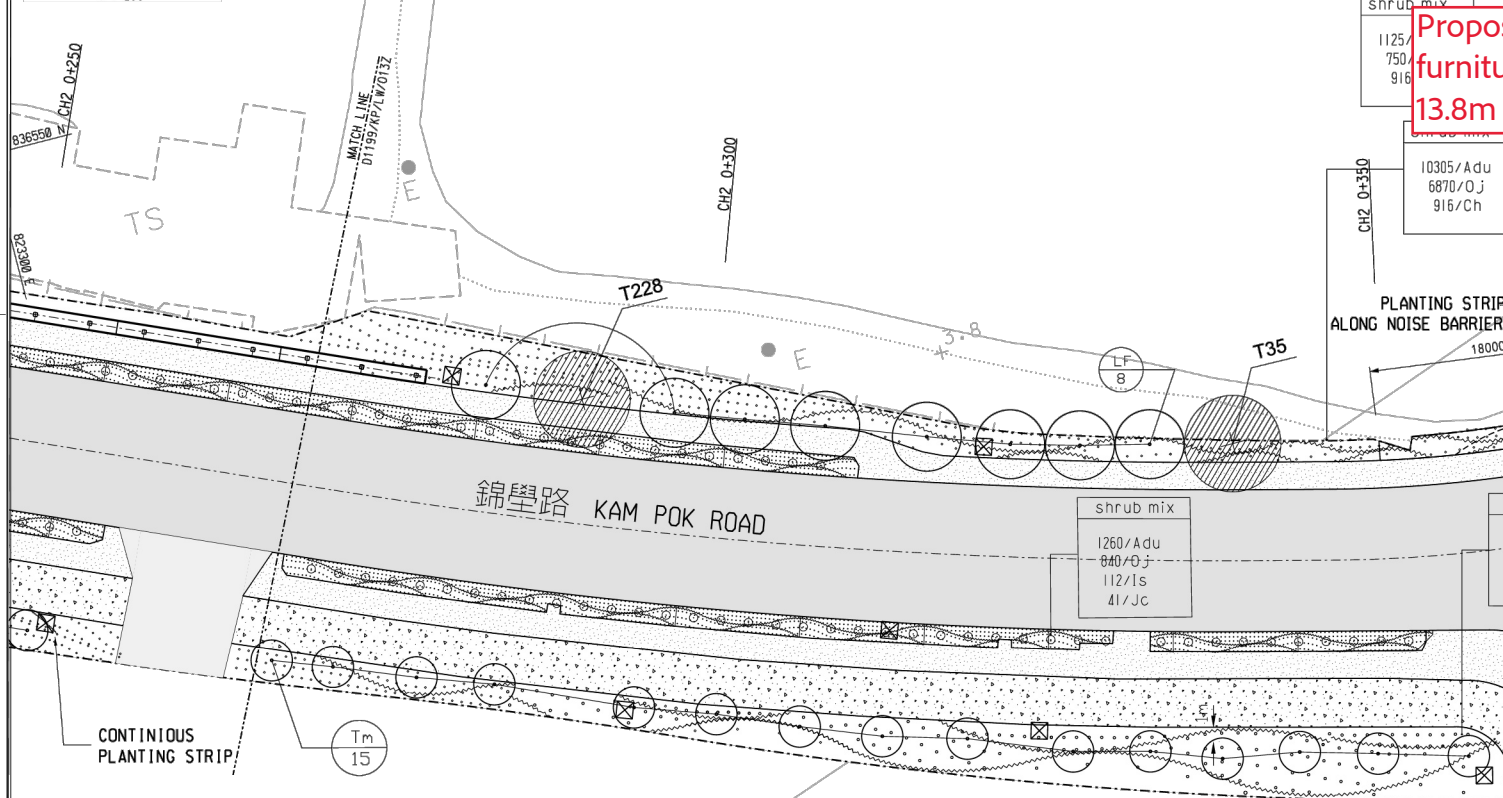
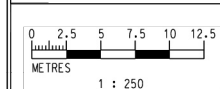
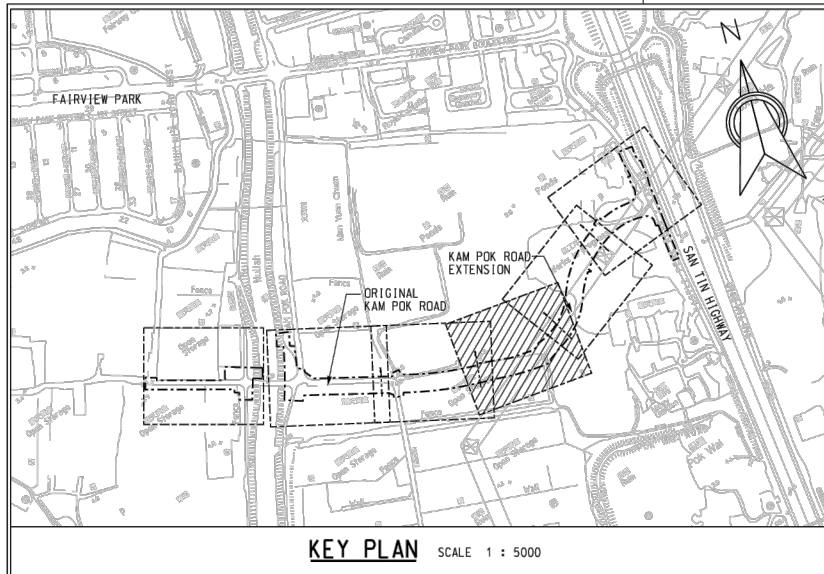
Consultants
 MANNINGS
(Asia) Consultants Limited

Scale in A1 1 : 500	Date DEC 2010
Designed FT	Drawn TWN
Design Team Leader SNG	Checked JM
Approved KTC	Date DEC 2010

Project
Contract No. HY/2010/09
Improvement and Extension of
Kam Pok Road

Title
NOISE BARRIER
LAYOUT PLAN

Drawing No. D1199/KP/NB/011	Stage	Rev. Z
---------------------------------------	-------	------------------



KEY	BOTANICAL NAME	CHINESE NAME	SIZE (HT x SPD)	SPACING	TOTAL QUANTITY	REMARKS
GROUNDCOVERS :						
Adu	Arachis duranensis	蔓花生	100 x 150	100 o.c.	25380	-
Oj	Ophiopogon japonicus	山麥冬	200 x 200	150 o.c.	15300	-
SHRUBS :						
Is	Ixora stricta	細葉紅花 龍船花	300 x 400	400 o.c.	168	shaped to form
Ch	Calliandra haematocephala	紅絨球	600 x 450	400 o.c.	1128	flowering, shaped to form
Jc	Juniperus chinensis	洋白柏	1500 x 600	2000 o.c.	41	-
Cya	Cyperus alternifolius	風車草	300 x 150	150 o.c.	1620	-
Cg	Canna generalis	大美人蕉	400 x 400	400 o.c.	1032	-
COMPENSATORY TREES :						
Tm	Terminalia montaly	細葉欖仁	HS	-	15	-
Lf	Liquidambar formosana	楓香	HS	min. 5m o.c.	8	DBH: 150mm; 3.5m(H) x 3m(S)

Proposed demolished portion street furniture (planter), approximately 13.8m in length

- NOTES :**
- ALL DIMENSIONS ARE IN MILLIMETRES UNLESS OTHERWISE STATED.
 - ALL LEVELS ARE IN MPD (METRE ABOVE HONG KONG PRINCIPAL DATUM).
 - ALL DRAWINGS SHALL BE READ IN CONJUNCTION WITH THE SPECIFICATION FOR LANDSCAPE AND ALL RELEVANT DRAWINGS AND SPECIFICATIONS.
 - ALL PLANTS TO BE TRUE TO SPECIES; PLANTS TO BE HEALTHY AND WITH THE HABIT AND SIZE OF THE PLANT SPECIFIED. PLANTS TO BE FREE FROM PESTS, DISEASE, PARASITES, DISCOLORATION AND DAMAGE AND SHALL HAVE A VIGOROUS FIBROUS ROOT SYSTEM WITH WELL DEVELOPED SHAPE FOR THE SPECIES AS SPECIFIED.
 - ALL PLANTS AND TREES SHALL BE PLANTED ON GRADE AND OPEN-BOTTOM PLANTERS. TREE LOCATIONS SHALL BE REFERRED TO RELEVANT APPROVED TREE REMOVAL APPLICATION.
 - SOIL LEVEL SHALL BE LOWERED BY 50MM FROM THE FINISHED LEVEL AND SLIGHTLY MOUND TO CENTRE.
 - SOIL MIX TO BE BACKFILLED TO A DEPTH OF 600MM WHERE SHRUB AND GROUND COVER PLANTINGS SHALL BE LOCATED AND 1200MM WHERE TREES SHALL BE LOCATED.
 - ORIGINAL SUB-SOIL SHALL BE BROKEN UP TO FACILITATE NATURAL DRAINAGE.

- LEGEND :**
- SITE BOUNDARY
 - C/W CARRIAGEWAY
 - F/P FOOTPATH
 - C/T CYCLE TRACK
 - RUN-IN
 - VERTICAL NOISE BARRIER
 - RETAINING WALL
 - PEDESTRIAN CROSSING
 - PLANTING
 - TRANSPLANTED TREES
 - COMPENSATORY TREES
 - WATER POINT (@ 40M INTERVAL)

Z	AS BUILT	APR 15	SIGNED
C	GENERAL REVISION	AUG 13	SIGNED
B	GENERAL REVISION	JUL 13	SIGNED
A	GENERAL REVISION	JAN 13	SIGNED
Rev.	Description of Revision	Date	Ckd.

Client
路政署 (工程組)
HIGHWAYS DEPARTMENT
WORKS DIVISION

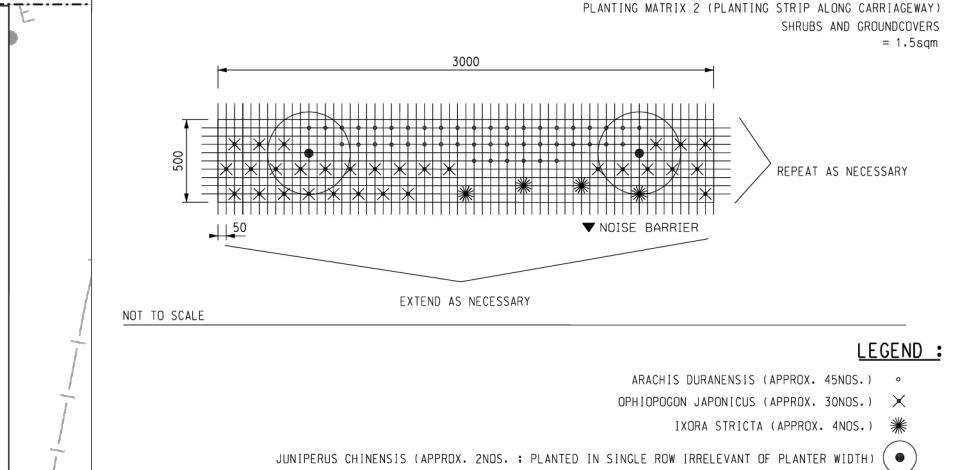
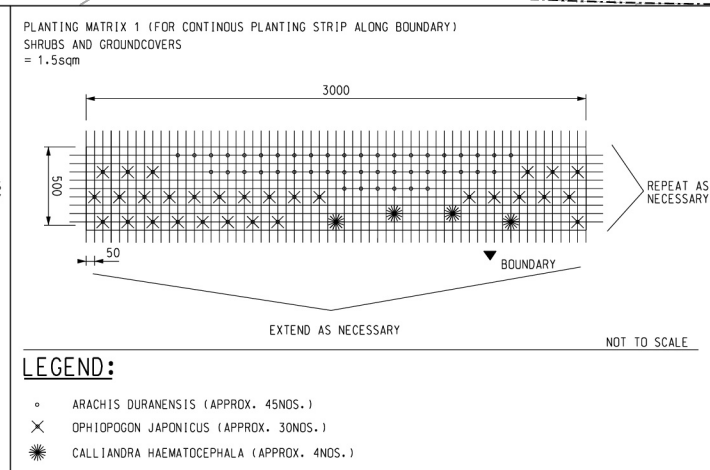
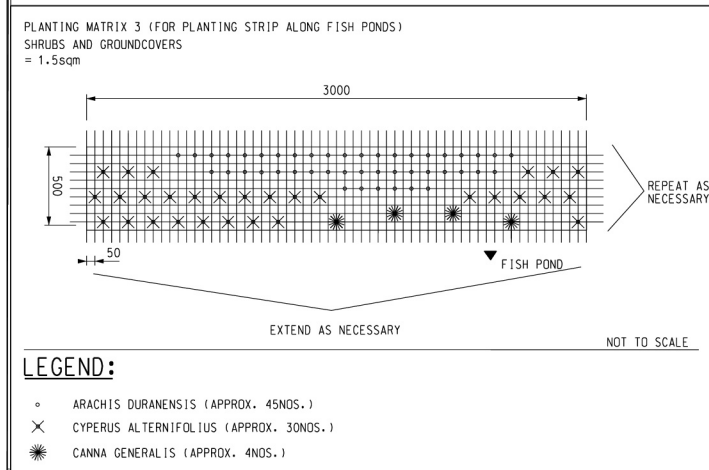
Consultants
MANNINGS
(Asia) Consultants Limited

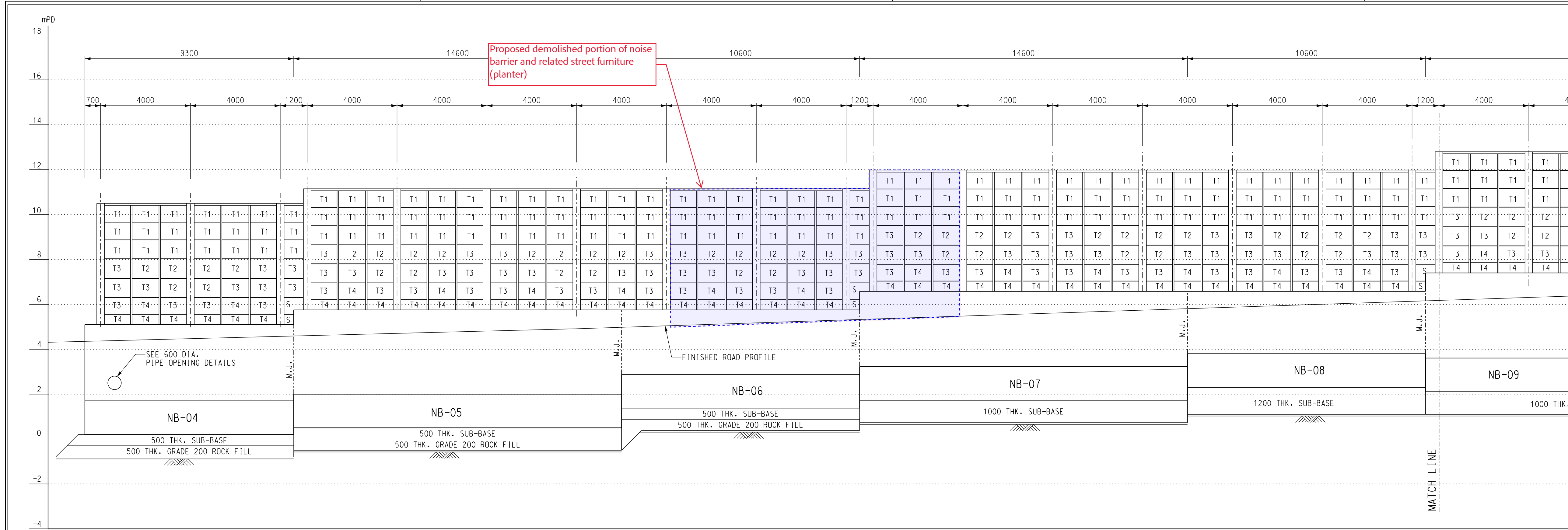
Scale in A1 1 : 250	Date FEB 2011
Designed GK	Drawn SAN
Design Team Leader SNG	Checked JM
Approved KTC	Date FEB 2011

Project
Contract No. HY/2010/09
Improvement and Extension of
Kam Pok Road

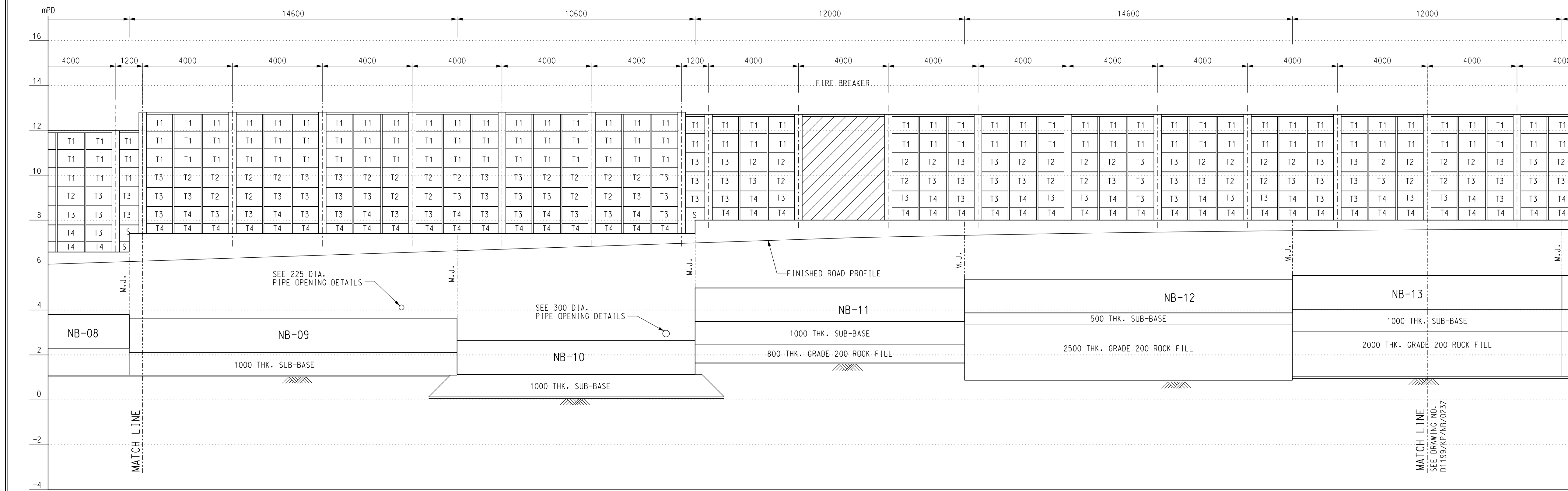
Title
LANDSCAPE LAYOUT
PLAN

Drawing No. D1199/KP/LW/014	Stage Z	Rev. Z
---------------------------------------	-------------------	------------------







ELEVATION FROM NB-04 TO NB-15



ELEVATION FROM NB-04 TO NB-15

NOTES :

- FOR NOTES & LEGEND REFER TO DRAWING NO. D1199/KP/NB/021Z.
- FOR ALL PIPE OPENING DETAILS REFER TO DRAWING NO. D1199/KP/NB/018Z.
- ALL PIPES ARE SHOWN FOR INDICATIVE ONLY.

Z	AS BUILT	OCT 13	SIGNED M.S. FONG E/N11-53
Rev.	Description of Revision	Date	Ckd.
Client			
 路政署 (工程組) HIGHWAYS DEPARTMENT WORKS DIVISION			
Consultants			
 MANNINGS (Asia) Consultants Limited			
Scale in A1 1 : 100		Date DEC 2010	
Designed GK	Drawn TWN	Checked JM	
Design Team Leader SNG		Date DEC 2010	
Approved KTC		Date DEC 2010	
Project			
Contract No. HY/2010/09 Improvement and Extension of Kam Pok Road			
Title			
NOISE BARRIER ELEVATIONS			
(SHEET 2 OF 4)			
Drawing No. D1199/KP/NB/022		Stage	Rev. Z

(SHEET 2 OF 4)