

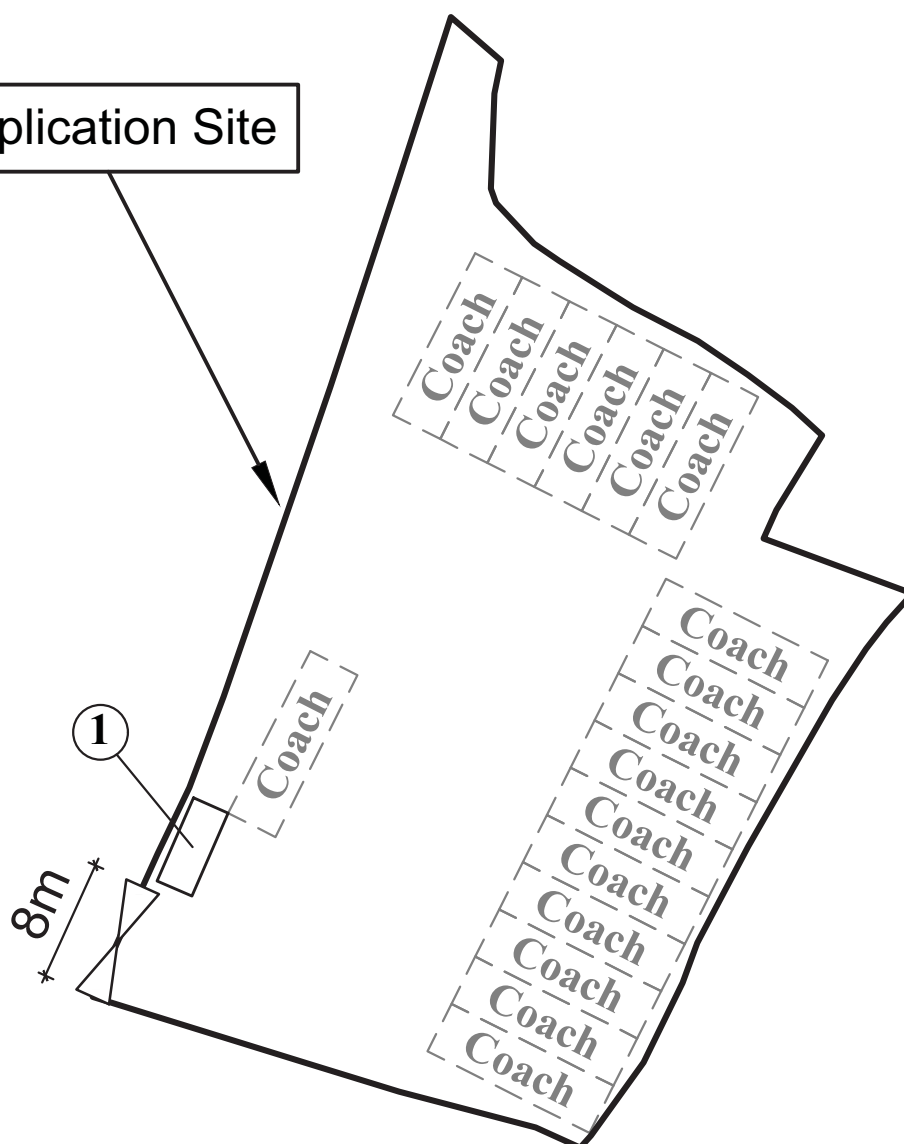
Viewpoint 1 on Plan 6



Viewpoint 2 on Plan 6



Application Site



Legend



Vehicular Ingress/ Egress



Parking space for coaches
(12m (L) x 3.5m (W))

Site Area (about) : 1,977m²

| No. | Structure / Use | Floor Area (about) | Covered Area (about) | No. of Storeys | Height |
|----------------------|------------------|------------------------|-------------------------|----------------|--------|
| 1 | Ancillary Office | <u>15m²</u> | <u>15m²</u> | 1 | <3m |
| Total Area (about) : | | <u>15m²</u> | <u>15m²</u> | | |

1:500

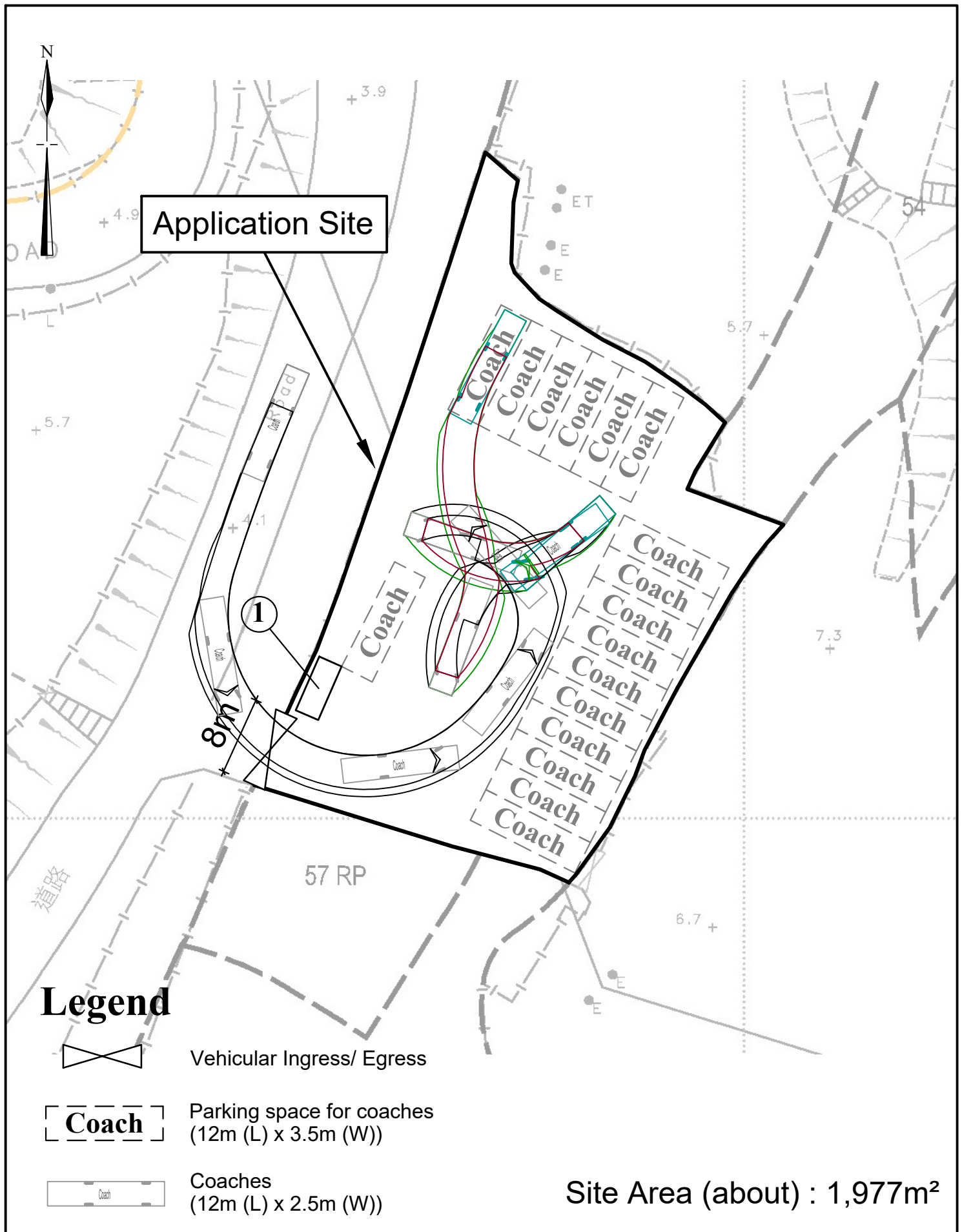
Layout Plan

Goldrich Planners &
Surveyors Ltd.

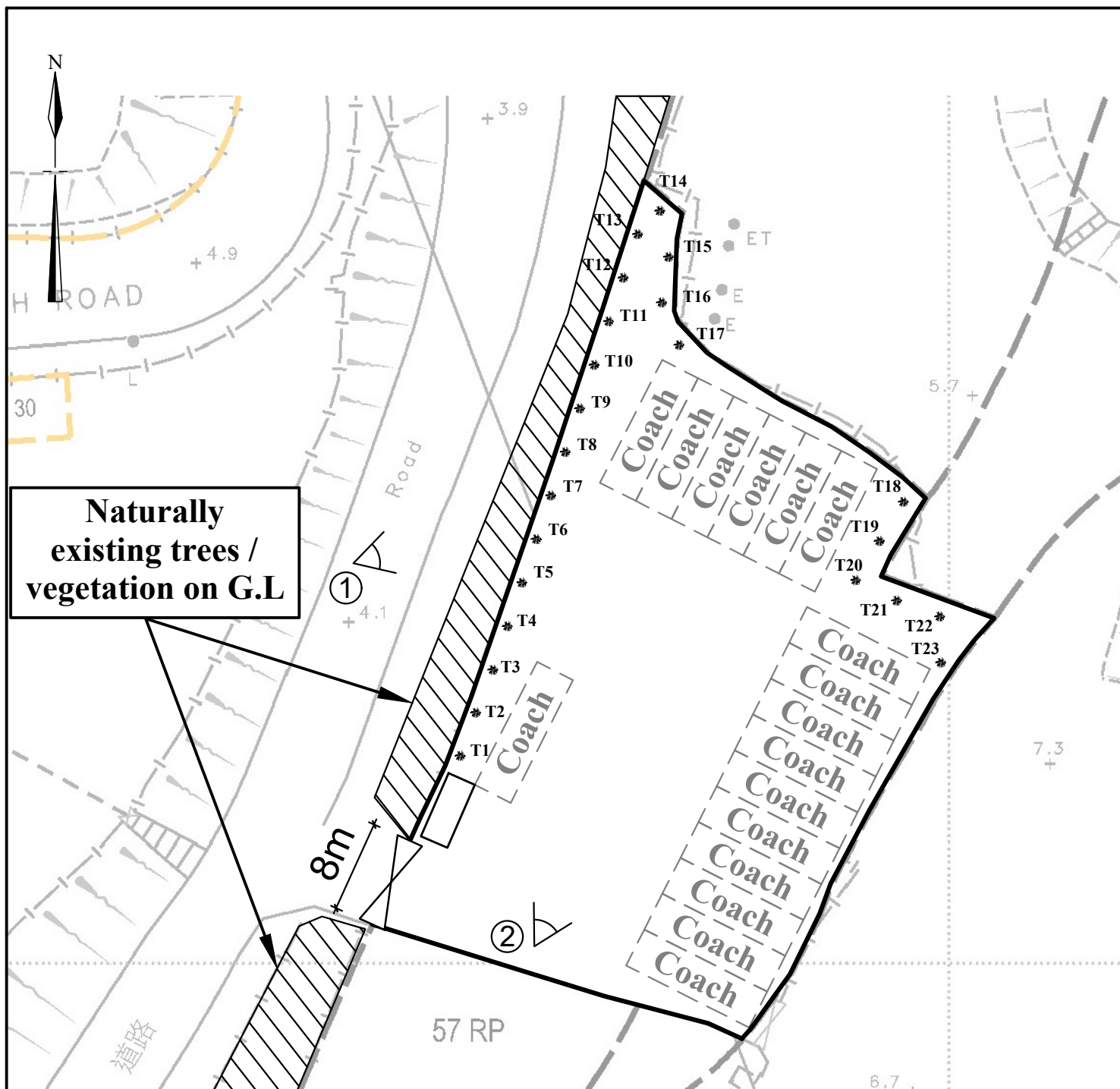
October 2023

Lots 56 RP, 57 RP (part) and 58 RP (part) in D.D.126
Ping Shan, New Territories

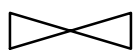
Plan 3a
(P 23028)



| | | |
|--------------|--|---|
| 1:500 | Swept Path Analysis | Goldrich Planners & Surveyors Ltd. |
| October 2023 | Lots 56 RP, 57 RP (part) and 58 RP (part) in D.D.126 Ping Shan, New Territories | Plan 5a (P 23028) |



Legend



Vehicular Ingress/ Egress



Parking space for coaches
(12m (L) x 3.5m (W))



Viewpoint of photographs



Proposed Bauhinia x blakeana

Proposed Bauhinia x blakeana (洋紫荊)

| | |
|----------------------------|---------|
| Spacing (Centre to Centre) | min. 4m |
|----------------------------|---------|

| | |
|--------------------|-------|
| Min. Size (Height) | 2.75m |
|--------------------|-------|

| | |
|----------|----|
| Quantity | 23 |
|----------|----|

Site Area (about) : 1,977m²

1:500

Landscape Proposal

Goldrich Planners &
Surveyors Ltd.

October 2023

Lots 56 RP, 57 RP (part) and 58 RP (part) in D.D.126
Ping Shan, New Territories

Plan 6
(P 23028)