

# **TREE GROUP INSPECTION REPORT FOR**

---

**LOT NOS. 992 & 998 S.B SS. 1 IN D.D. 106**

Ms. Lee Hiu Wa



ISA Certified Arborist (HK-1104A)

Tree Management Personnel

Registration Scheme

Arborist (TM522127)

Tree Risk Assessor (TM522127)

Tree Work Supervisor (TM522127)

## **Content**

<b>1. Introduction</b>	<b>P. 2</b>
<b>2. Methodology</b>	<b>P. 2</b>
<b>3. General Descriptions on Existing Trees</b>	<b>P. 3</b>
<b>4. Appendix A – Tree Location Plan</b>	<b>P. 4</b>
<b>5. Appendix B – General View</b>	<b>P. 5</b>
<b>6. Appendix C – Tree Survey Schedule</b>	<b>P. 7</b>
<b>7. Appendix D – Tree Photographic Records</b>	<b>P. 11</b>

## **1. Introduction**

The owner was instructed to perform tree inspection service so as to examine the target trees inside the LOT NOS. 992 & 998 S.B SS. 1 IN D.D. 106 This tree group inspection report describes the inspection methodology, the results, Arborist's recommendations and conclusion.

## **2. Methodology**

An ISA Certified Arborist was assigned to conduct a tree inspection at the site on 3 April, 2024.

Thorough visual inspection of the trees was conducted by the Arborists from various vantage points on the ground to examine the subject trees. Within the designated site boundary, all living trees (in some case large tree-form shrubs) with a main trunk equal to or over 95 mm in Diameter at Breast Height (DBH) were included in the tree survey (AFCD Practice Note No. 2 / 2006). Each tree was allocated and tagged with a tree number, and its position was plotted on plans. They were then identified (1) to species, or in some cases to genus if full identification was not possible. Measurements were taken of its trunk diameter, height and spread, with a photograph taken. The report includes the following information on each tree surveyed:

- Tree No. (numbers allocated to individual trees);
- Tree Species Name (Scientific Name and Chinese Name);
- DBH at 1.3m above Ground level (mm);
- Crown spread (m);
- Overall Height (m);
- Amenity Value (High/Medium/Low);
- Form (Good/Fair/Poor);
- Health Condition (Good/Fair/Poor);
- Structural Condition (Good/Fair/Poor);
- Suitability for Transplanting (High/Medium/Low);
- Origin;
- Remarks (special features of particular trees)

### 3. General Descriptions on Existing Trees

There are 85 trees surveyed in site. For the composition of the surveyed trees, it is composed of 11 species. *Macaranga tanarius* var. *tomentosa* (血桐) was the dominant species with the quantities of 27. More information is shown in the Table 3.1.

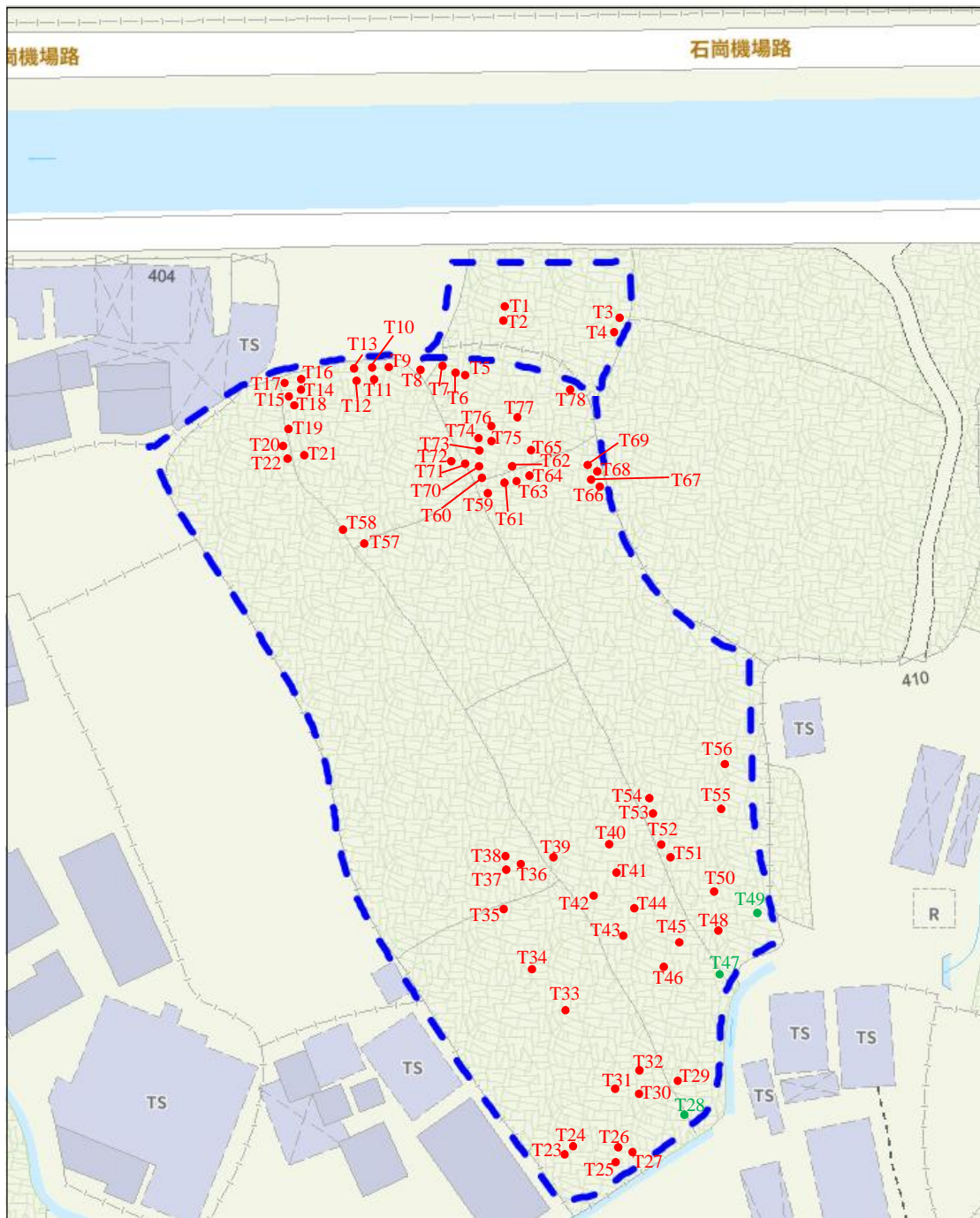
Table 3.1: Individual Surveyed Trees Species & Quantities

Scientific Name	Recommendation	Conservation Status	Quantities
<i>Averrhoa carambola</i>	Fell	-	2
<i>Bombax ceiba</i>	Fell	-	1
<i>Bridelia tomentosa</i>	Fell	-	2
<i>Celtis sinensis</i>	Fell	-	1
<i>Dimocarpus longan</i>	Fell	-	5
<i>Ficus hispida</i>	Fell	-	10
<i>Leucaena leucocephala</i>	Fell	-	20
<i>Ligustrum sinense</i>	Fell	-	1
<i>Macaranga tanarius</i> var. <i>tomentosa</i>	Fell	-	27
<i>Mangifera indica</i>	Retain	-	3
<i>Mangifera indica</i>	Fell	-	5
<i>Melia azedarach</i> L.	Fell	-	8
Total Quantity of Surveyed Trees:			85

Please refer to Appendix A for Tree Location Plan, Appendix B for General View, Appendix C for Tree Survey Schedule and Appendix D for Tree Photographic Records.



#### 4. Appendix A – Tree Location Plan



## Appendix B – General View







Appendix C – Tree Survey Schedule

Location: Lot nos. 992 & 998 S,B ss.1 in D.D. 106

Date of Inspection: 2023/04/03

Surveyed by: LEE HIU WA

Tree No.	Tree Species		Tree Size Measurement			Amenity Value (High / Medium /Low)	Form (Good/ Fair/ Poor)	Health Condition (Good / Fair / Poor /Dead)	Structural Condition (Good/ Fair/ Poor)	Suitability for Transplanting	Origin	Remarks
	Scientific Name	Chinese Name	DBH(mm)	Overall Height (m)	Crown Spread (m)					(High/ Medium/ Low)		
T1	<i>Celtis sinensis</i>	朴樹	490	12	10	Low	Fair	Fair	Fair	Low	Native	wound (trunk),vine
T2	<i>Ligustrum sinense</i>	山指甲	152	4	4	Low	Fair	Fair	Fair	Low	Exotic	Epicomics
T3	<i>Leucaena leucocephala</i>	銀合歡	107	8	3	Low	Fair	Poor	Fair	Low	Exotic	sparse
T4	<i>Leucaena leucocephala</i>	銀合歡	105	8	3	Low	Poor	Poor	Poor	Low	Exotic	lean, sparse
T5	<i>Macaranga tanarius</i> var. <i>tomentosa</i>	血桐	116	6	1	Low	Poor	Poor	Poor	Low	Native	wound (trunk), dead tree
T6	<i>Macaranga tanarius</i> var. <i>tomentosa</i>	血桐	142	6	3	Low	Poor	Poor	Poor	Low	Native	wound (trunk), dead tree
T7	<i>Macaranga tanarius</i> var. <i>tomentosa</i>	血桐	148	6	3	Low	Poor	Poor	Poor	Low	Native	wound (trunk), lean, sparse, vine
T8	<i>Melia azedarach</i> L.	苦楝	130	4	3	Low	Poor	Poor	Poor	Low	Exotic	lean, root restriction, sparse
T9	<i>Macaranga tanarius</i> var. <i>tomentosa</i>	血桐	190	4	3	Low	Fair	Poor	Fair	Low	Native	wound (trunk), lean, vine, sparse
T10	<i>Macaranga tanarius</i> var. <i>tomentosa</i>	血桐	99	3	3	Low	Fair	Poor	Fair	Low	Native	wound (trunk), topping, vine, sparse
T11	<i>Macaranga tanarius</i> var. <i>tomentosa</i>	血桐	138	7	3	Low	Fair	FaiPr	Fair	Low	Native	wound (trunk), vine, sparse
T12	<i>Macaranga tanarius</i> var. <i>tomentosa</i>	血桐	165	7	4	Low	Poor	Poor	Poor	Low	Native	wound (trunk), vine, dead tree
T13	<i>Macaranga tanarius</i> var. <i>tomentosa</i>	血桐	123	8	1	Low	Poor	Poor	Poor	Low	Native	wound (trunk), vine, dead tree
T14	<i>Macaranga tanarius</i> var. <i>tomentosa</i>	血桐	138	6	4	Low	Fair	Fair	Fair	Low	Native	wound (trunk), uprooting, vine
T15	<i>Leucaena leucocephala</i>	銀合歡	109	6	2	Low	Fair	Poor	Fair	Low	Exotic	sparse
T16	<i>Macaranga tanarius</i> var. <i>tomentosa</i>	血桐	180	6	4	Low	Fair	Fair	Fair	Low	Native	wound(trunk), root restriction, multi-trunks, sparse
T17	<i>Macaranga tanarius</i> var. <i>tomentosa</i>	血桐	123	6	1	Low	Poor	Poor	Poor	Low	Native	lean, dead tree
T18	<i>Leucaena leucocephala</i>	銀合歡	108	8	2	Low	Poor	Poor	Poor	Low	Exotic	wound (trunk), dead tree
T19	<i>Melia azedarach</i> L.	苦楝	261	15	8	Low	Fair	Fair	Fair	Low	Exotic	wound(trunk) , dead branches
T20	<i>Leucaena leucocephala</i>	銀合歡	111	5	2	Low	Poor	Poor	Poor	Low	Exotic	wound , lean, dead tree
T21	<i>Leucaena leucocephala</i>	銀合歡	100	5	2	Low	Poor	Poor	Poor	Low	Exotic	wound (trunk), dead tree
T22	<i>Melia azedarach</i> L.	苦楝	340	15	10	Low	Fair	Fair	Fair	Low	Exotic	wound (trunk), codominant trunks
T23	<i>Dimocarpus longan</i>	龍眼	188	3	5	Low	Fair	Poor	Fair	Low	Exotic	sparse

Appendix C – Tree Survey Schedule

Location: Lot nos. 992 & 998 S.B ss.1 in D.D. 106

Date of Inspection: 2023/04/03

Surveyed by: LEE HIU WA

Tree No.	Tree Species		Tree Size Measurement			Amenity Value (High / Medium /Low)	Form (Good/ Fair/ Poor)	Health Condition (Good / Fair / Poor /Dead)	Structural Condition (Good/ Fair/ Poor)	Suitability for Transplanting	Origin	Remarks
	Scientific Name	Chinese Name	DBH(mm)	Overall Height (m)	Crown Spread (m)					(High/ Medium/ Low)		
T24	<i>Dimocarpus longan</i>	龍眼	162	4	5	Low	Fair	Poor	Fair	Low	Exotic	sparse
T25	<i>Dimocarpus longan</i>	龍眼	98	3	4	Low	Fair	Poor	Fair	Low	Exotic	sparse
T26	<i>Ficus hispida</i>	對葉榕	111	4	3	Low	Fair	Poor	Fair	Low	Native	sparse
T27	<i>Ficus hispida</i>	對葉榕	97	3	2	Low	Fair	Poor	Fair	Low	Native	bent(trunk), vine, sparse
T28	<i>Mangifera indica</i>	杧果	430	15	9	Low	Fair	Fair	Fair	Low	Exotic	lean, included bark
T29	<i>Averrhoa carambola</i>	楊桃	105	3	4	Low	Poor	Fair	Poor	Low	Exotic	wound (trunk), vince, sparse
T30	<i>Averrhoa carambola</i>	楊桃	107	3	4	Low	Fair	Fair	Fair	Low	Exotic	vince, sparse
T31	<i>Ficus hispida</i>	對葉榕	162	5	4	Low	Fair	Fair	Fair	Low	Native	codominant trunks, vine
T32	<i>Ficus hispida</i>	對葉榕	100	6	5	Low	Fair	Fair	Fair	Low	Native	codominant trunks, vine
T33	<i>Bombax ceiba</i>	木棉	167	4	1	Low	Poor	Poor	Poor	Low	Exotic	topping, dead tree
T34	<i>Melia azedarach</i> L.	苦楝	100	4	1	Low	Poor	Poor	Poor	Low	Exotic	dead tree
T35	<i>Macaranga tanarius</i> var. <i>tomentosa</i>	血桐	105	4	4	Low	Fair	Fair	Fair	Low	Native	bent(trunk), dead branches, root exposed
T36	<i>Melia azedarach</i> L.	苦楝	155	7	3	Low	Fair	Poor	Fair	Low	Exotic	lean, sparse, vine
T37	<i>Melia azedarach</i> L.	苦楝	143	6	2	Low	Fair	Poor	Fair	Low	Exotic	wound , sparse, vine
T38	<i>Melia azedarach</i> L.	苦楝	110	2	4	Low	Poor	Poor	Poor	Low	Exotic	wound (trunk), lean, dead tree
T39	<i>Ficus hispida</i>	對葉榕	202	7	5	Low	Fair	Fair	Fair	Low	Native	lean, multi-trunks
T40	<i>Ficus hispida</i>	對葉榕	202	7	4	Low	Fair	Fair	Fair	Low	Native	codominant trunks, vine
T41	<i>Ficus hispida</i>	對葉榕	121	8	3	Low	Fair	Fair	Fair	Low	Native	codominant trunks
T42	<i>Ficus hispida</i>	對葉榕	115	7	3	Low	Fair	Fair	Fair	Low	Native	Epicomics, codominant trunk
T43	<i>Ficus hispida</i>	對葉榕	112	7	3	Low	Fair	Poor	Fair	Low	Native	sparse
T44	<i>Mangifera indica</i>	杧果	482	14	8	Low	Fair	Fair	Fair	Low	Exotic	multi-trunks
T45	<i>Mangifera indica</i>	杧果	203	11	4	Low	Fair	Fair	Fair	Low	Exotic	
T46	<i>Mangifera indica</i>	杧果	418	19	10	Low	Fair	Fair	Fair	Low	Exotic	multi-trunks, vine, dead branches

Appendix C – Tree Survey Schedule

Location: Lot nos. 992 & 998 S.B ss.1 in D.D. 106

Date of Inspection: 2023/04/03

Surveyed by: LEE HIU WA

Tree No.	Tree Species		Tree Size Measurement			Amenity Value (High / Medium /Low)	Form (Good/ Fair/ Poor)	Health Condition (Good / Fair / Poor /Dead)	Structural Condition (Good/ Fair/ Poor)	Suitability for Transplanting	Origin	Remarks
	Scientific Name	Chinese Name	DBH(mm)	Overall Height (m)	Crown Spread (m)					(High/ Medium/ Low)		
T47	<i>Mangifera indica</i>	杧果	508	14	10	Low	Fair	Fair	Fair	Low	Exotic	multi-trunks, vine
T48	<i>Mangifera indica</i>	杧果	277	14	7	Low	Fair	Fair	Fair	Low	Exotic	multi-trunks, vine
T49	<i>Mangifera indica</i>	杧果	180	7	4	Low	Fair	Fair	Fair	Low	Exotic	multi-trunks
T50	<i>Mangifera indica</i>	杧果	480	14	10	Low	Fair	Fair	Fair	Low	Exotic	multi-trunks
T51	<i>Macaranga tanarius</i> var. <i>tomentosa</i>	血桐	114	8	4	Low	Fair	Fair	Fair	Low	Native	wound(trunk)
T52	<i>Macaranga tanarius</i> var. <i>tomentosa</i>	血桐	133	6	4	Low	Poor	Fair	Poor	Low	Native	wound (trunk), lean
T53	<i>Macaranga tanarius</i> var. <i>tomentosa</i>	血桐	120	4	3	Low	Fair	Poor	Fair	Low	Native	wound (trunk), vine, sparse
T54	<i>Bridelia tomentosa</i>	土蜜樹	146	3	4	Low	Poor	Poor	Poor	Low	Native	dead tree, vine
T55	<i>Dimocarpus longan</i>	龍眼	278	4	5	Low	Fair	Fair	Fair	Low	Exotic	vine
T56	<i>Dimocarpus longan</i>	龍眼	269	4	5	Low	Fair	Fair	Fair	Low	Exotic	vine
T57	<i>Macaranga tanarius</i> var. <i>tomentosa</i>	血桐	172	4	3	Low	Fair	Fair	Fair	Low	Native	lean, vine
T58	<i>Macaranga tanarius</i> var. <i>tomentosa</i>	血桐	138	5	4	Low	Poor	Poor	Poor	Low	Native	dead tree, vine
T59	<i>Leucaena leucocephala</i>	銀合歡	145	3	2	Low	Poor	Poor	Poor	Low	Exotic	lean, stub, wood, uprooting, vine, sparse
T60	<i>Macaranga tanarius</i> var. <i>tomentosa</i>	血桐	100	5	2	Low	Fair	Poor	Fair	Low	Native	wound (trunk), vine, sparse
T61	<i>Leucaena leucocephala</i>	銀合歡	101	4	1	Low	Fair	Poor	Fair	Low	Exotic	topping, vine, sparse
T62	<i>Leucaena leucocephala</i>	銀合歡	118	5	2	Low	Poor	Poor	Poor	Low	Exotic	wound (trunk), lean, vine, sparse
T63	<i>Leucaena leucocephala</i>	銀合歡	113	5	3	Low	Fair	Poor	Fair	Low	Exotic	wound (trunk),vine, sparse
T64	<i>Leucaena leucocephala</i>	銀合歡	100	6	3	Low	Poor	Fair	Poor	Low	Exotic	wound(trunk), lean, topping, vine
T65	<i>Macaranga tanarius</i> var. <i>tomentosa</i>	血桐	105	3	4	Low	Poor	Fair	Poor	Low	Native	wound (trunk), lean, vine
T66	<i>Leucaena leucocephala</i>	銀合歡	164	6	3	Low	Fair	Fair	Fair	Low	Exotic	vine
T67	<i>Leucaena leucocephala</i>	銀合歡	112	2	3	Low	Poor	Poor	Poor	Low	Exotic	lean, topping, vine, sparse
T68	<i>Leucaena leucocephala</i>	銀合歡	139	3	1	Low	Poor	Poor	Poor	Low	Exotic	lean, topping, vine, sparse
T69	<i>Leucaena leucocephala</i>	銀合歡	185	7	3	Low	Poor	Poor	Poor	Low	Exotic	lean, stubs, topping, vine, sparse

## Appendix C – Tree Survey Schedule

**Location:** Lot nos. 992 & 998 S.B ss.1 in D.D. 106

**Date of Inspection:** 2023/04/03

Surveyed by: LEE HIU WA

[illegible]



## Appendix D–Tree Photographic Records



T1



T1



T1



T1





T2



T2



T2



T2





T3



T3



T3



T3





T4



T4



T4



T4





T5



T5



T5



T5





T6



T6



T6



T6





T7



T7



T7



T7





T8



T8



T8



T8





T9



T9



T9



T9





T10



T10



T10



T10





T11



T11



T11



T11





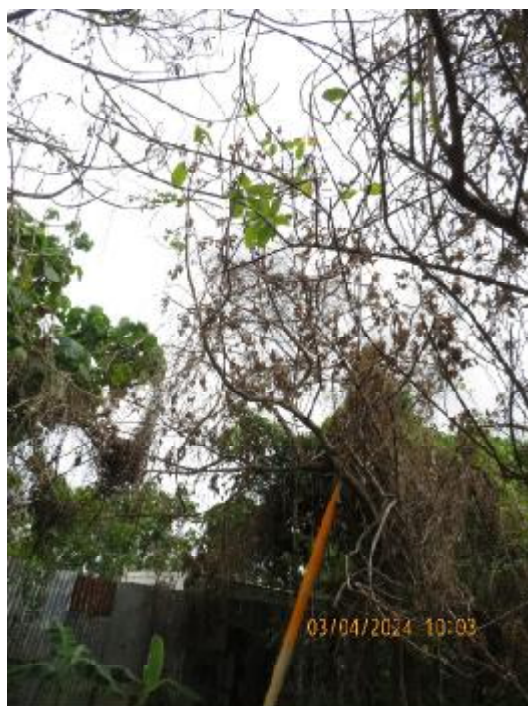
T12



T12



T12



T12





T13



T13



T13



T13





T14



T14



T14



T14





T15



T15



T15



T15





T16



T16



T16

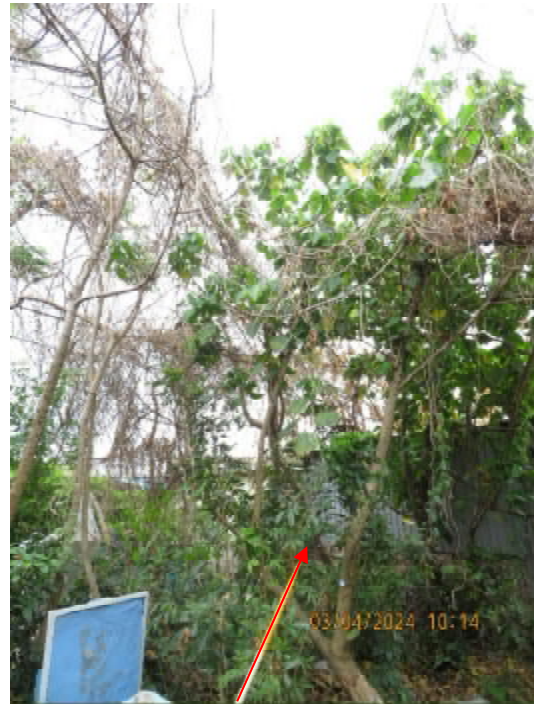


T16





T17



T17



T17



T17





T18



T18



T18



T18





T19



T19



T19



T19





T20



T20



T20



T20





T21



T21



T21



T21





T22



T22



T22



T22





T23



T23



T23



T23





T24



T24



T24



T24





T25



T25



T25



T25





T26



T26



T26



T26



T27



T27



T27





T28



T28



T28

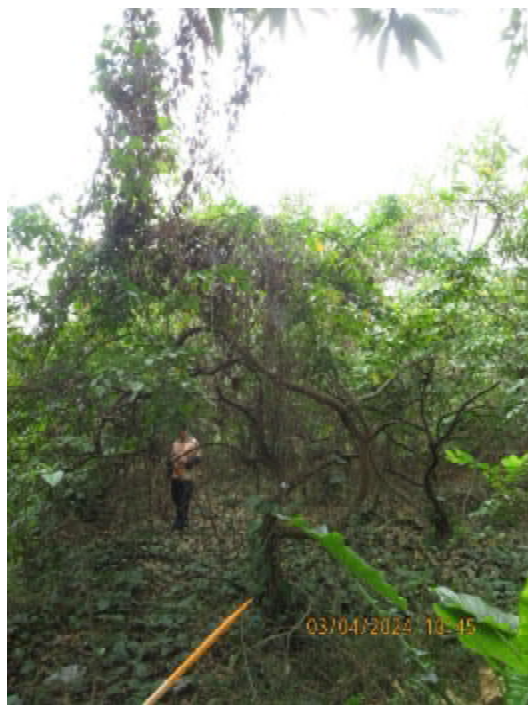


T28





T29



T29



T29



T29

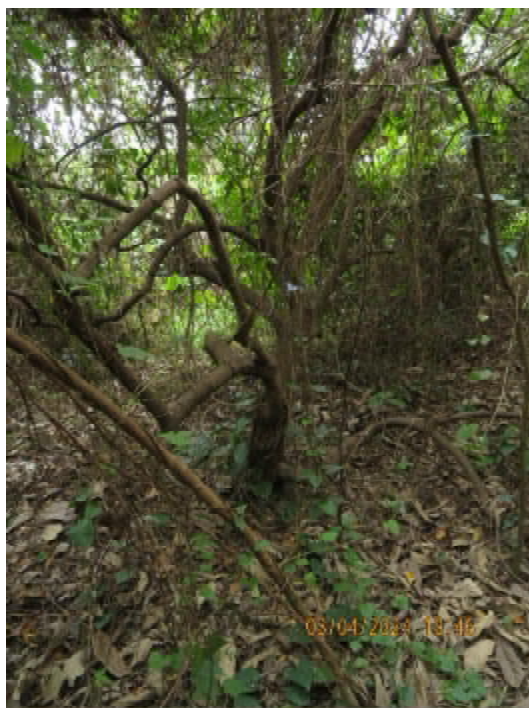




T30



T30



T30



T30





T31



T31



T31



T31





T32



T32



T32



T32





T33



T33



T33



T33





T34



T34



T34



T34





T35



T35



T35



T36



T36



T36



T36





T37



T37



T37



T37





T38



T38



T38



T38





T39



T39



T39





T40



T40



T40



T40





T41



T41



T41





T42



T42



T42



T42





T43



T43



T43



T44



T44



T44



T44





T45



T45



T45



T46





T46



T46



T46





T47



T47



T47



T47





T48



T48



T48



T48





T49



T49



T49



T50



T50



T50





T51



T51



T51





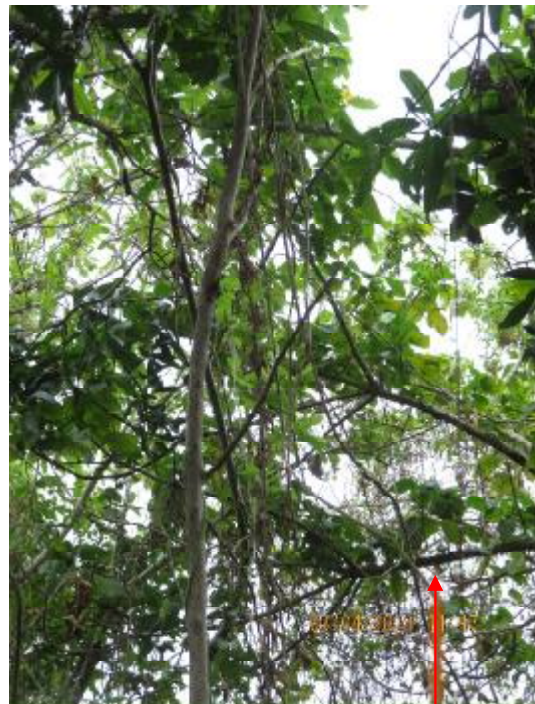
T52



T52



T52



T52





T53



T53



T53



T53





T54



T54



T54



T54





T55



T55



T55



T55





T56



T56



T56



T56

T56





T57



T57



T57



T57





T58



T58



T58



T58





T59



T59



T59





T60



T60



T60



T60





T61



T61



T61



T61





T62



T62



T62



T62





T63



T63



T63



T63





T64



T64



T64



T64

T64





T65



T65



T65



T65





T66



T66



T66



T66





T67



T67



T67



T67





T68



T68



T68

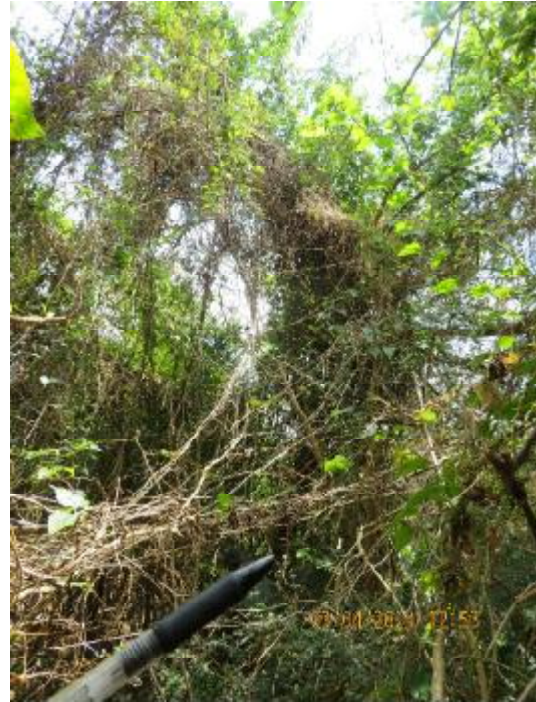


T68





T69



T69



T69



T69





T70



T70



T70



T70





T71



T71



T71





T72



T72



T72



T72





T73



T73



T73





T74



T74



T74



T74





T75



T75



T75



T75





T76



T76



T76



T76





T77



T77



T77





T78



T78



T78



T78





T79



T79



T79



T79





T80



T80



T80



T80





T81



T81



T81



T81





T82



T82



T82



T82





T83



T83



T83



T83





T84



T84



T84



T84





T85



T85



T85



T85



## **Compensatory Planting Proposal**

DD106 lot 992 & 998 S.B ss. 1

Ms. Lee Hiu Wa



ISA Certified Arborist (HK-1104A)

Tree Management Personnel Registration Scheme

Arborist (TM522127)

Tree Risk Assessor (TM522127)

Tree Work Supervisor (TM522127)



## ***CONTENTS***

<b><i>1</i></b>	<b><i>OBJECTIVE</i></b>	<b><i>3</i></b>
<b><i>2</i></b>	<b><i>LOCATION PLAN OF COMPENSATORY TREES</i></b>	<b><i>4</i></b>
<b><i>3</i></b>	<b><i>THE REPLANTING AREA</i></b>	<b><i>5</i></b>
<b><i>4</i></b>	<b><i>RECOMMAND REPLANTED TREES (CP1-20)</i></b>	<b><i>6</i></b>
<b><i>5</i></b>	<b><i>SUMMARY OF PROPOSED PLANTING SPECIES FOR COMPENSATORY PLANTING</i></b>	<b><i>7</i></b>

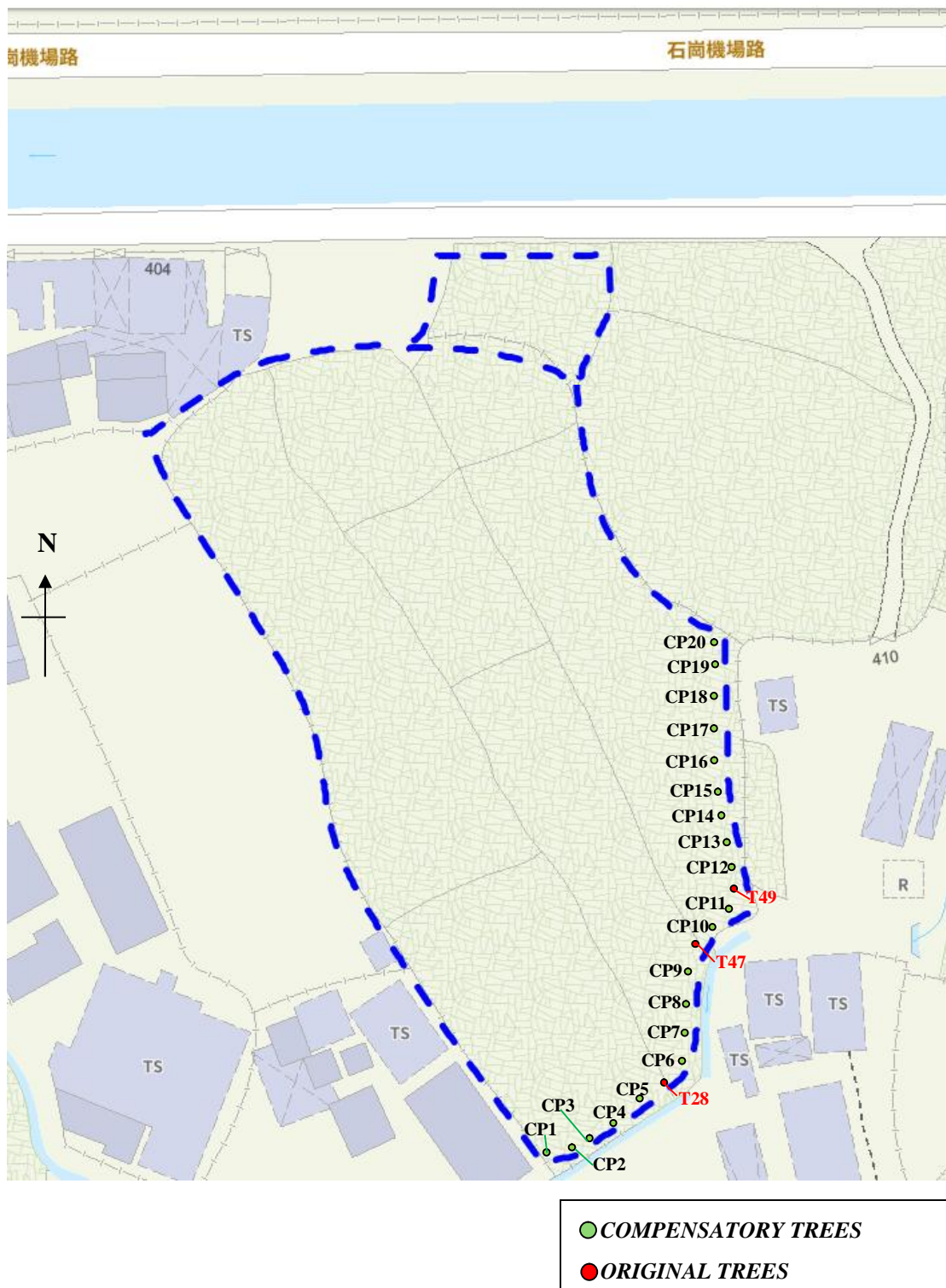


***1 OBJECTIVE***

In accordance with Practice Note No. 6/2023 (Tree Preservation and Tree Removal Application for Building Development in Private Projects) from Lands Administration Office of Lands Department, it is understood that the general principle of implementing compensatory tree planting is of a ratio not less than 1:1 in terms of quantity. As such, 82 new trees are required to be planted for compensation. However, after thorough site inspection within boundary and according to proposed layout plan, the site is fully occupied by facilities. There is not adequate space for health growth of the total number of compensatory trees to their mature size. We recommend replanting 20 standard trees within the Lot.

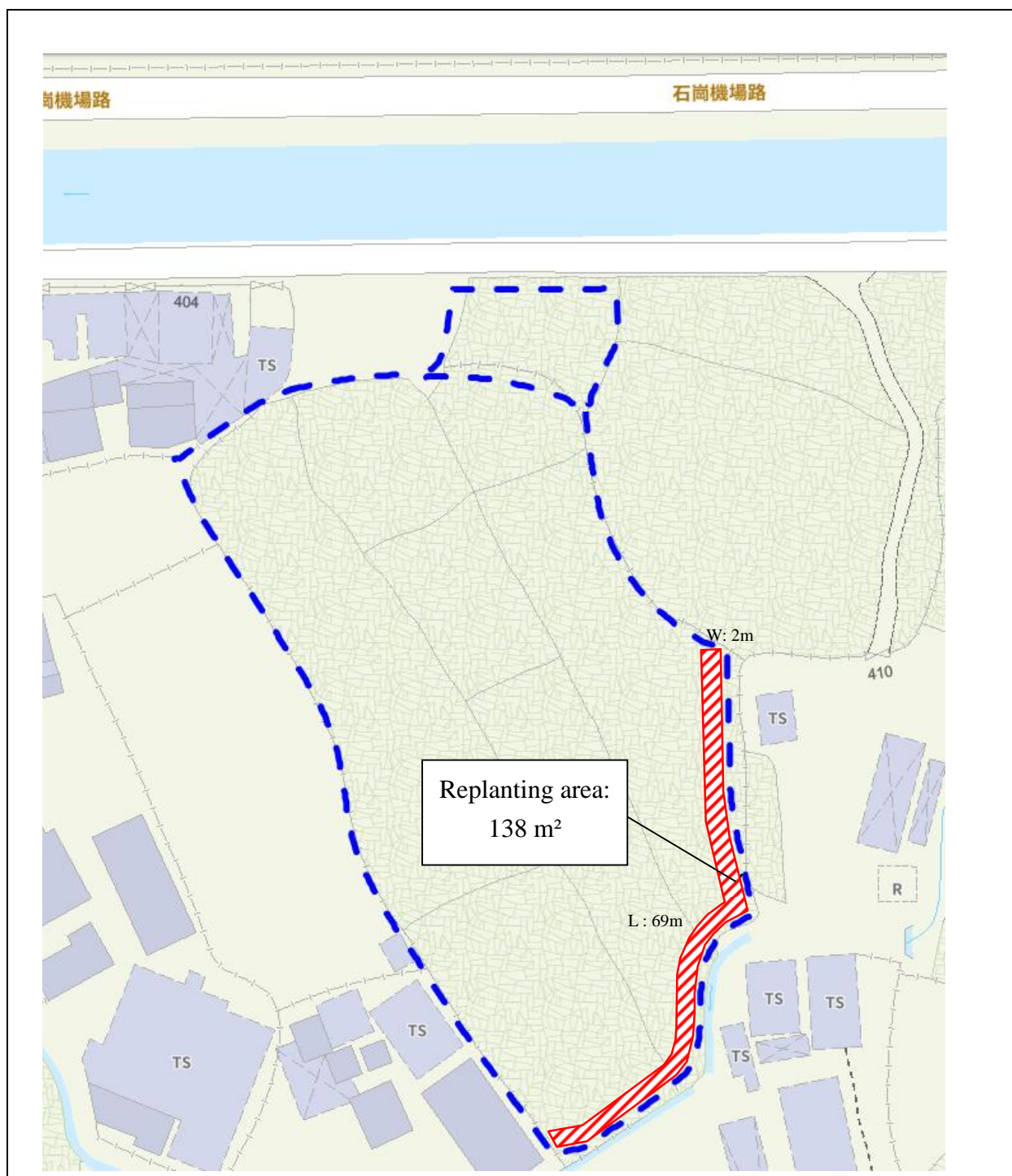


## 2 LOCATION PLAN OF COMPENSATORY TREES





### 3 THE REPLANTING AREA



#### 4 **RECOMMEND COMPENSATORY TREES**

- Replanting area: 138m<sup>2</sup>
- The gradient of the landscape: 0°
- Species
  - Ø 2 nos. of *Schefflera heptaphylla* (鴨腳木) (CP1, 3)
  - Ø 3 nos. of *Murraya paniculata* (九里香) (CP2, 4, 14)
  - Ø 2 nos. of *Xanthostemon chrysanthus* (金蒲桃) (CP5, 7)
  - Ø 4 nos. of *Magnolia x soulangeana* (二喬木蘭) (CP6, 8, 16, 18)
  - Ø 2 nos. of *Lagerstroemia speciosa* (大花紫薇) (CP9, 11)
  - Ø 3nos. of *Osmanthus fragrans* (桂花) (CP10, 12, 20)
  - Ø 2nos. of *Tabebuia chrysantha* (黃花風鈴木) (CP13, 15)
  - Ø 1nos. of *Liquidambar formosana* (楓香) (CP17)
  - Ø 1nos. of *Cinnamomum camphora* (樟) (CP19)
- DBH(mm): 60 (standard tree)
- Height(m): 3
- Spread(m): 1
- Live-crown ratio (%): 50
- Rootball: A rootball at least 450 mm in diameter and 300 mm deep
- Surface treatment: the recipient tree pits will be backfilled with the mixture of 1 part of soil condition with 4 parts of existing soil
- Alinement: 3 meters centre apart will be proposed between the compensatory and existing trees for having better development. Also the compensation trees will be planted at least 1.2m from drainage, channel and curb.
- Depth of soil: at least 1.2m excluding drainage layer

#### 5 **SUMMARY OF PROPOSED PLANTING SPECIES FOR COMPENSATORY**



***PLANTING***

<b><i>Summary of Proposed Planting Species for Compensatory Planting</i></b>							
<b>Location</b>	<b>Species</b>	<b>DBH (mm)</b>	<b>Crown Spread (m)</b>	<b>Overall Height (m)</b>	<b>Quantity (nos.)</b>	<b>Live-crown ratio (%)</b>	<b>Planting Matrix</b>
Agricultural area	<i>Schefflera heptaphylla</i> (鴨腳木)	60	1	3	2	50	3m centre apart
Agricultural area	<i>Murraya paniculata</i> (九里香)	60	1	3	3	50	3m centre apart
Agricultural area	<i>Xanthostemon chrysanthus</i> (金蒲桃)	60	1	3	2	50	3m centre apart
Agricultural area	<i>Magnolia x Soulangeana</i> (二喬木蘭)	60	1	3	4	50	3m centre apart
Agricultural area	<i>Lagerstroemia speciosa</i> (大花紫薇)	60	1	3	2	50	3m centre apart
Agricultural area	<i>Osmanthus fragrans</i> (桂花)	60	1	3	3	50	3m centre apart
Agricultural area	<i>Tabebuia chrysantha</i> (黃花風鈴木)	60	1	3	2	50	3m centre apart
Agricultural area	<i>Liquidambar formosana</i> (楓香)	60	1	3	1	50	3m centre apart
Agricultural area	<i>Cinnamomum camphora</i> (樟)	60	1	3	1	50	3m centre apart
<b>Total</b>					<b>20</b>		