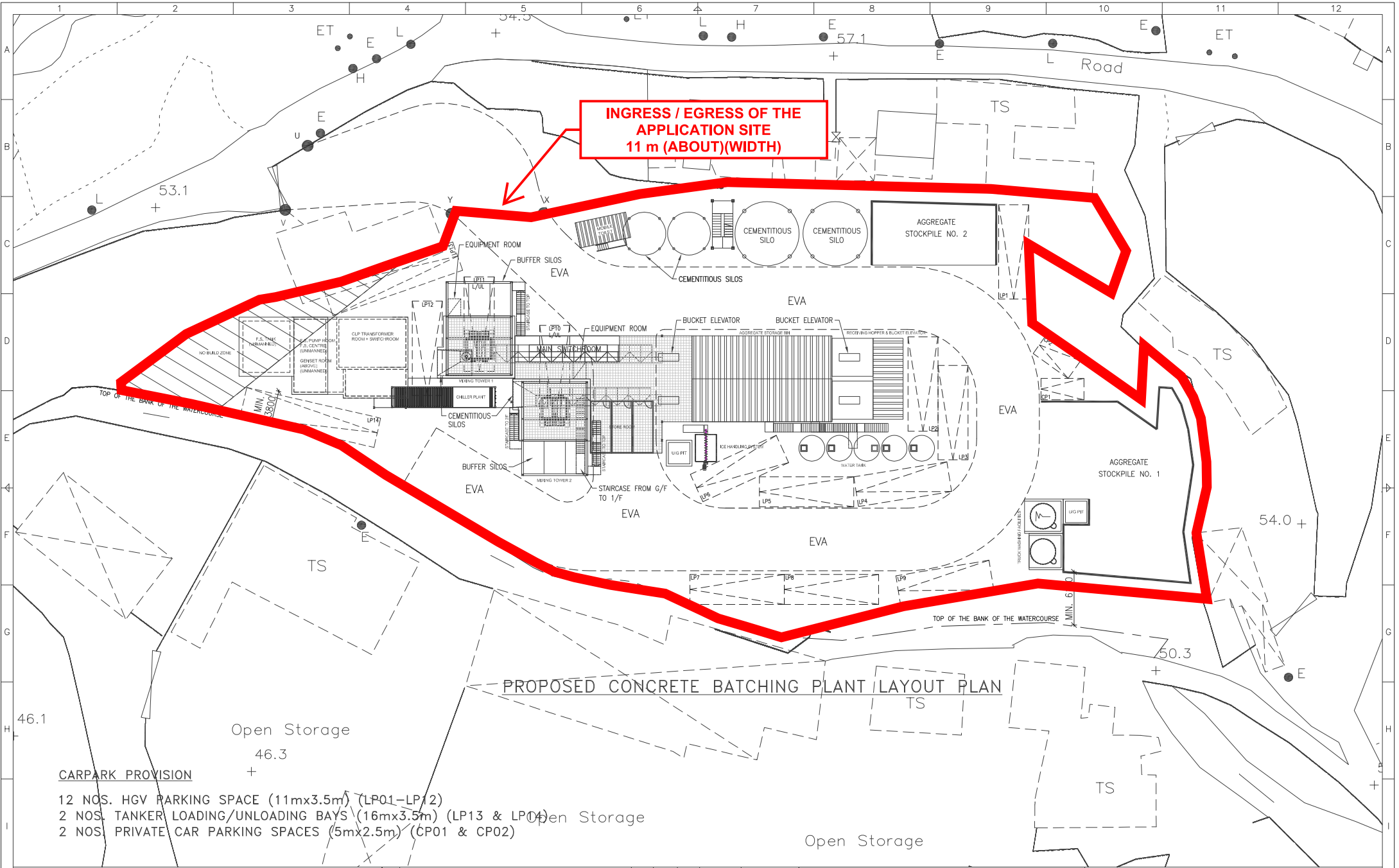


Annex 5
Revised Layout Plan






PROPOSED CONCRETE BATCHING PLANT LAYOUT PLAN

CARPARK PROVISION

12 NOS. HGV PARKING SPACE (11mx3.5m) (LP01-LP12)

2 NOS. TANKER LOADING/UNLOADING BAYS (16mx3.5m) (LP13 & LP14)

2 NOS. PRIVATE CAR PARKING SPACES (5mx2.5m) (CP01 & CP02)

1. ALL DIMENSIONS TO BE IN MM UNLESS NOTED OTHERWISE.										DRAWN LAWRENCE			EDWIN LAI INTERNATIONAL LTD.		TITLE GLORIOUS CONCRETE LIMITED SHEK KONG PROPOSED BATCHING PLANT GENERAL LAYOUT PLAN -		J
										DESIGNED -							
										CHECKED -							
										APPROVED -							
										DATE 2023-12-05							
C REVISED				LL	11/01/26	-	DATE		2023-12-05								
B REVISED				LL	29/10/24	-											
A TPB SUBMISSION				LL	30/09/24	-											
				COPYRIGHT © THIS DRAWING REMAINS THE PROPERTY OF EDWIN LAI INTERNATIONAL LTD. AND CANNOT BE COPIED OR USED BY OTHER PARTIES WITHOUT THEIR WRITTEN PERMISSION.													
				REV	DESCRIPTION			BY	DATE	APPROVED	CADD REF. GLORIOUS SHEK KONG CBP 20250111 (TPB).DWG		SCALE AS SHOWN (A3)	DRAWING NO. GCL-SK-CBP-GP-01	JOB NO. 11994	REV. C	
				4				5				8		9		10	
				1				2				3		4		5	
				6				7				8		9		10	
				11				12				13		14		15	