

## **LIST OF PLANS**

<b>Plan 1</b>	Location plan
<b>Plan 2</b>	Plan showing the zoning of the Site
<b>Plan 3</b>	Plan showing the land status of the Site
<b>Plan 4</b>	Layout plan
<b>Plan 5</b>	Plan showing the filling of land at the Site
<b>Plan 6</b>	Swept path analysis

LOCATION OF THE APPLICATION SITE

APPLICATION SITE AREA : 3,763 m<sup>2</sup> (ABOUT)

VEHICULAR ACCESS

ACCESSIBLE FROM SHEK KONG AIRFIELD ROAD VIA A LOCAL ACCESS


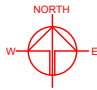
ACCESSIBLE FROM SHEK KONG AIRFIELD ROAD VIA A LOCAL ACCESS

APPLICATION SITE

LEGEND

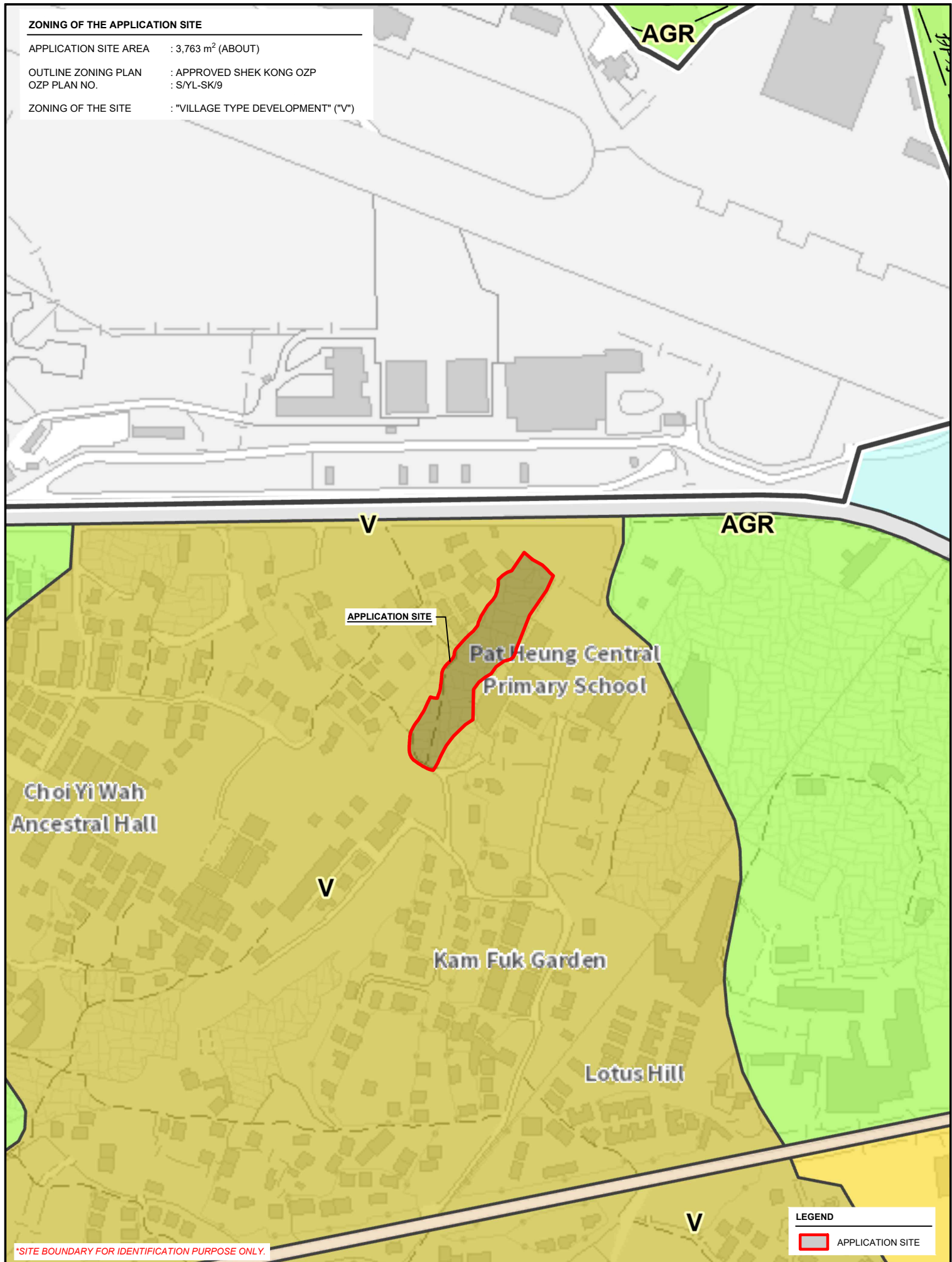
APPLICATION SITE

\*SITE BOUNDARY FOR IDENTIFICATION PURPOSE ONLY.

PLANNING CONSULTANT  	PROJECT  PROPOSED TEMPORARY SHOP AND SERVICES AND PUBLIC VEHICLE PARK (EXCLUDING CONTAINER VEHICLE) WITH ANCILLARY FACILITIES AND ASSOCIATED FILLING OF LAND FOR A PERIOD OF 5 YEARS	ADDRESS  LOT 354 IN D.D. 112, SHUI LAU TIN, SHEK KONG, YUEN LONG, NEW TERRITORIES	SCALE 1 : 3000 @ A4		TITLE LOCATION PLAN		
			DRAWN BY MN	DATE 18.8.2025			
			REVISED BY	DATE	DWG NO. PLAN 1	VER. 001	

ZONING OF THE APPLICATION SITE

APPLICATION SITE AREA : 3,763 m<sup>2</sup> (ABOUT)  
OUTLINE ZONING PLAN : APPROVED SHEK KONG OZP  
OZP PLAN NO. : S/YL-SK/9  
ZONING OF THE SITE : "VILLAGE TYPE DEVELOPMENT" ("V")



\*SITE BOUNDARY FOR IDENTIFICATION PURPOSE ONLY.

LEGEND  
APPLICATION SITE

PLANNING CONSULTANT



PROJECT

PROPOSED TEMPORARY SHOP AND SERVICES AND PUBLIC VEHICLE PARK (EXCLUDING CONTAINER VEHICLE) WITH ANCILLARY FACILITIES AND ASSOCIATED FILLING OF LAND FOR A PERIOD OF 5 YEARS

ADDRESS

LOT 354 IN D.D. 112, SHUI LAU TIN, SHEK KONG, YUEN LONG, NEW TERRITORIES

SCALE

1 : 3000 @ A4

DRAWN BY

MN

DATE

18.8.2025

REVISED BY

DATE

TITLE

ZONING PLAN

DWG NO.

PLAN 2

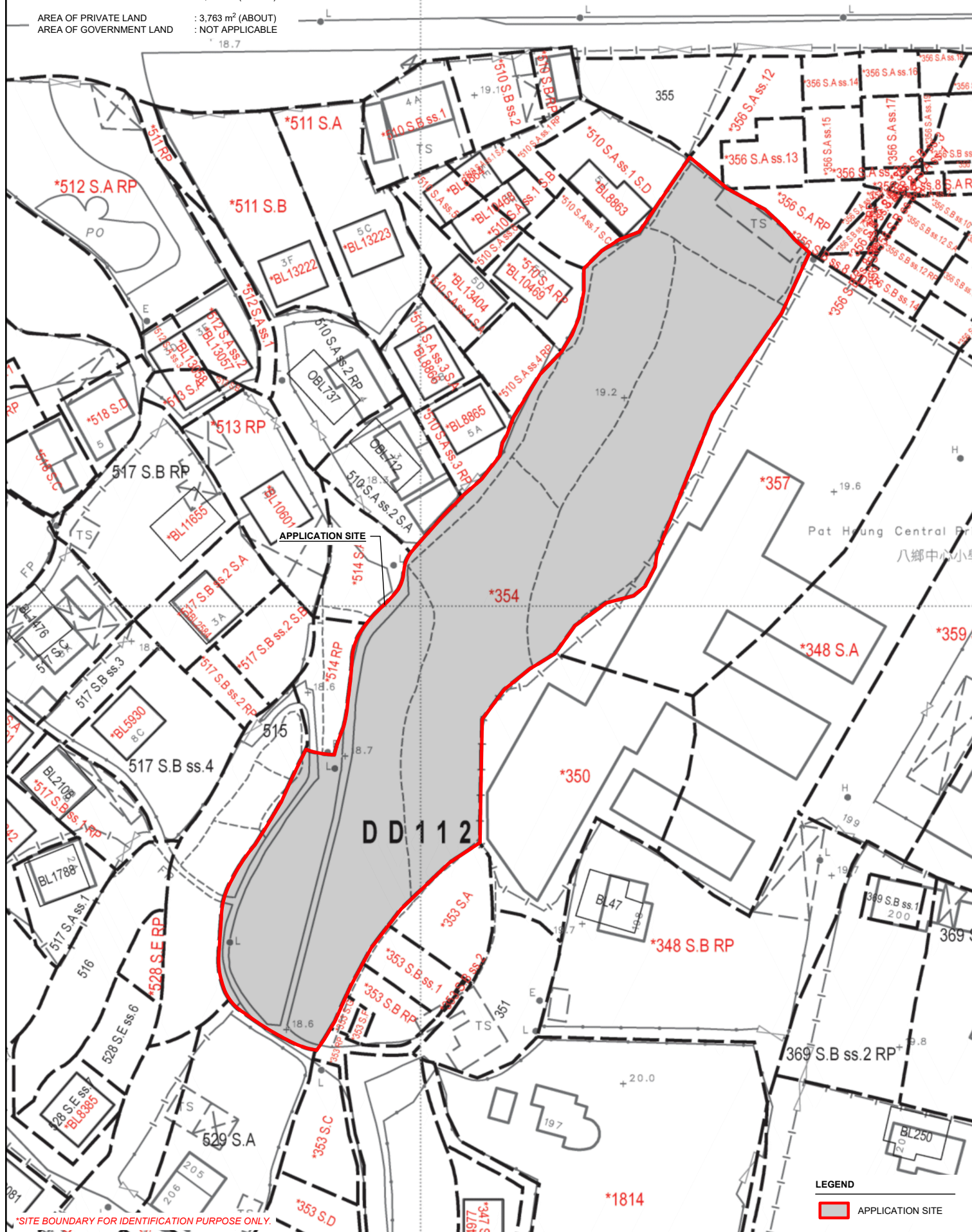
VER.

001



# LAND STATUS OF THE APPLICATION SITE

APPLICATION SITE AREA : 3,763 m<sup>2</sup> (ABOUT)  
 AREA OF PRIVATE LAND : 3,763 m<sup>2</sup> (ABOUT)  
 AREA OF GOVERNMENT LAND : NOT APPLICABLE



PLANNING CONSULTANT



PROJECT

PROPOSED TEMPORARY SHOP AND SERVICES AND PUBLIC VEHICLE PARK (EXCLUDING CONTAINER VEHICLE) WITH ANCILLARY FACILITIES AND ASSOCIATED FILLING OF LAND FOR A PERIOD OF 5 YEARS

ADDRESS

LOT 354 IN D.D. 112, SHUI LAU TIN, SHEK KONG, YUEN LONG, NEW TERRITORIES

SCALE

1 : 750 @ A4

DRAWN BY

MN

DATE

18.8.2025

REVISED BY

DATE

TITLE

LAND STATUS

DWG NO.

PLAN 3

VER.

001

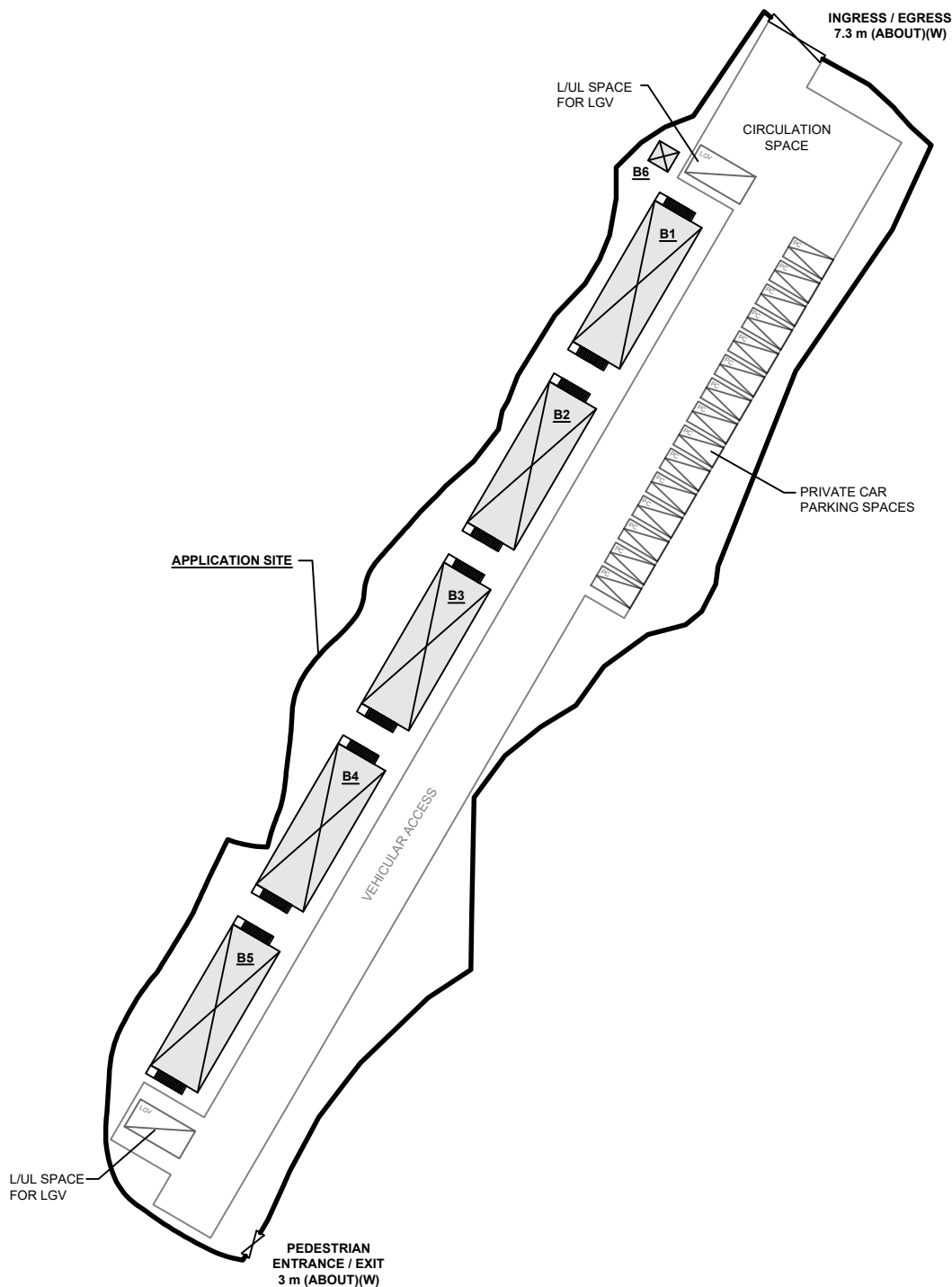


## DEVELOPMENT PARAMETERS

APPLICATION SITE AREA	: 3,763 m <sup>2</sup>	(ABOUT)
COVERED AREA	: 597 m <sup>2</sup>	(ABOUT)
UNCOVERED AREA	: 3,166 m <sup>2</sup>	(ABOUT)
PLOT RATIO	: 0.3	(ABOUT)
SITE COVERAGE	: 16 %	(ABOUT)
NO. OF STRUCTURE	: 6	
DOMESTIC GFA	: NOT APPLICABLE	
NON-DOMESTIC GFA	: 1,137 m <sup>2</sup>	(ABOUT)
TOTAL GFA	: 1,137 m <sup>2</sup>	(ABOUT)
BUILDING HEIGHT	: 3 m - 8 m	(ABOUT)
NO. OF STOREY	: 1 - 2	

STRUCTURE	USE	COVERED AREA	GROSS FLOOR AREA	BUILDING HEIGHT
B1	S&S, OFFICE AND WASHROOM	118 m <sup>2</sup> (ABOUT)*	226 m <sup>2</sup> (ABOUT) <sup>#</sup>	8 m (ABOUT)(2-STOREY)
B2	S&S, OFFICE AND WASHROOM	118 m <sup>2</sup> (ABOUT)*	226 m <sup>2</sup> (ABOUT) <sup>#</sup>	8 m (ABOUT)(2-STOREY)
B3	S&S, OFFICE AND WASHROOM	118 m <sup>2</sup> (ABOUT)*	226 m <sup>2</sup> (ABOUT) <sup>#</sup>	8 m (ABOUT)(2-STOREY)
B4	S&S, OFFICE AND WASHROOM	118 m <sup>2</sup> (ABOUT)*	226 m <sup>2</sup> (ABOUT) <sup>#</sup>	8 m (ABOUT)(2-STOREY)
B5	S&S, OFFICE AND WASHROOM	118 m <sup>2</sup> (ABOUT)*	226 m <sup>2</sup> (ABOUT) <sup>#</sup>	8 m (ABOUT)(2-STOREY)
B6	METER ROOM	7 m <sup>2</sup> (ABOUT)	7 m <sup>2</sup> (ABOUT) <sup>#</sup>	3 m (ABOUT)(1-STOREY)
TOTAL		597 m <sup>2</sup> (ABOUT)	1,137 m <sup>2</sup> (ABOUT)	

\* COVERED AREA OF STRUCTURE: 108 m<sup>2</sup> (ENCLOSED) + 10 m<sup>2</sup> (STAIRCASES) = 118 m<sup>2</sup> (ABOUT)  
 # GFA OF STRUCTURE: 108 m<sup>2</sup> (G/F) + 108 m<sup>2</sup> (1/F) + 10 m<sup>2</sup> (STAIRCASES) = 226 m<sup>2</sup> (ABOUT)  
 S&S SHOP AND SERVICES



## PARKING PROVISIONS

NO. OF PRIVATE CAR PARKING SPACE	: 15
DIMENSION OF PARKING SPACE	: 5 m (L) X 2.5 m (W)
NO. OF L/U/L SPACE FOR LIGHT GOODS VEHICLE	: 2
DIMENSION OF PARKING SPACE	: 7 m (L) X 3.5 m (W)

## LEGEND

	APPLICATION SITE
	STRUCTURE
	PARKING SPACE (PC)
	L/U/L SPACE (LGV)
	INGRESS / EGRESS

PLANNING CONSULTANT



PROJECT

PROPOSED TEMPORARY SHOP AND SERVICES AND PUBLIC VEHICLE PARK (EXCLUDING CONTAINER VEHICLE) WITH ANCILLARY FACILITIES AND ASSOCIATED FILLING OF LAND FOR A PERIOD OF 5 YEARS

ADDRESS

LOT 354 IN D.D. 112, SHUI LAU TIN, SHEK KONG, YUEN LONG, NEW TERRITORIES

SCALE

1 : 750 @ A4

DRAWN BY

MN

DATE

18.8.2025

REVISED BY

DATE

TITLE

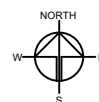
LAYOUT PLAN

DWG NO.

PLAN 4

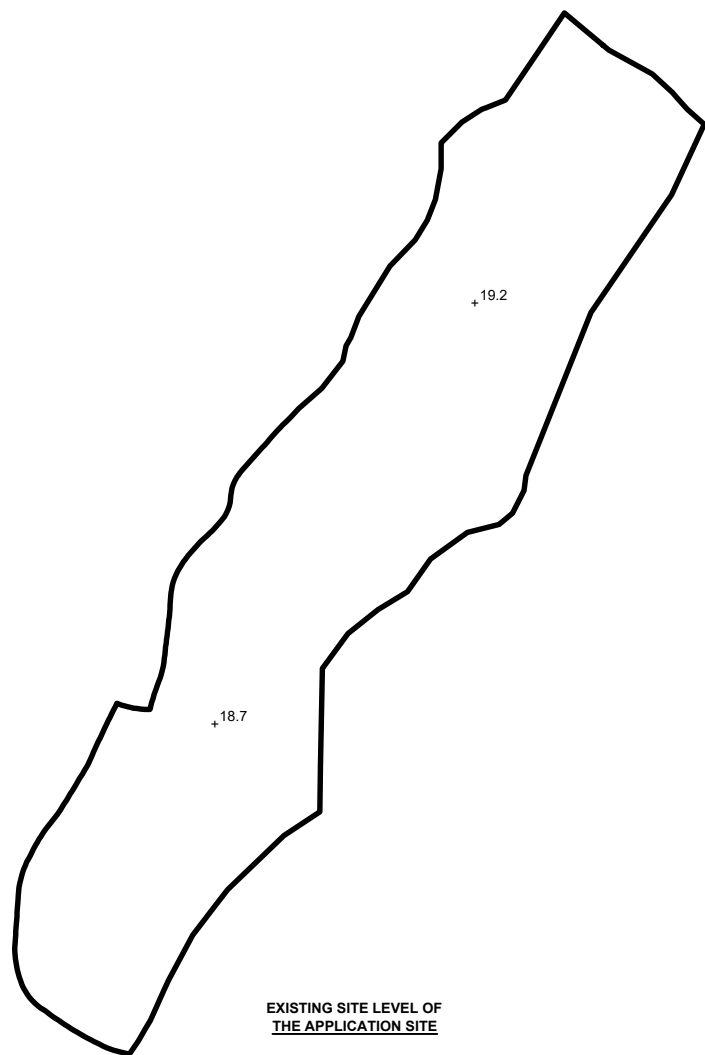
VER.

001



# EXISTING CONDITION OF THE APPLICATION SITE

APPLICATION SITE AREA : 3,763 m<sup>2</sup> (ABOUT)  
 EXISTING SITE SURFACE : SOILED GROUND  
 EXISTING SITE LEVELS : +18.7 mPD TO +19.2 mPD (ABOUT)



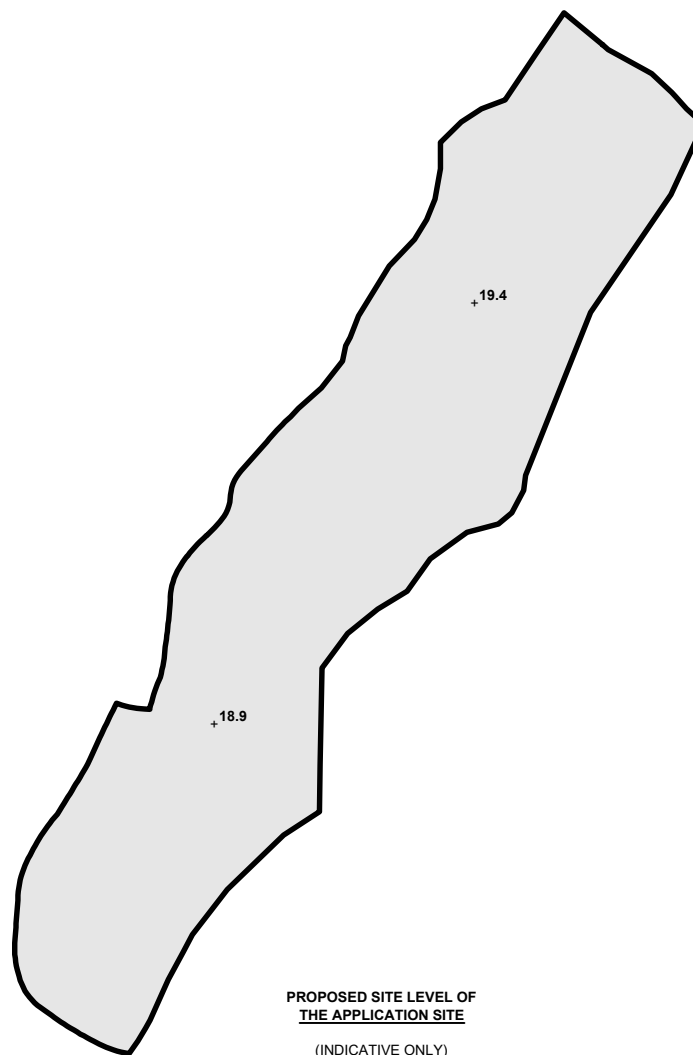
## LEGEND

- APPLICATION SITE
- SOILED GROUND AREA
- +19.2 EXISTING SITE LEVEL

\*SITE BOUNDARY FOR IDENTIFICATION PURPOSE ONLY

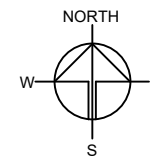
# PROPOSED FILLING OF LAND AREA OF THE APPLICATION SITE

APPLICATION SITE AREA : 3,763 m<sup>2</sup> (ABOUT)  
 PROPOSED FILLING OF LAND AREA : 3,763 m<sup>2</sup> (ABOUT)  
 DEPTH OF LAND FILLING : NOT MORE THAN 0.2 m  
 PROPOSED SITE LEVELS : +18.9 mPD TO +19.4 mPD (ABOUT)  
 MATERIAL OF FILLING : CONCRETE  
 PURPOSE OF FILLING : SITE FORMATION OF STRUCTURE, CIRCULATION SPACE



## LEGEND

- APPLICATION SITE
- FILLING OF LAND AREA
- +19.4 PROPOSED SITE LEVEL



PLANNING CONSULTANT



PROJECT

PROPOSED TEMPORARY SHOP AND SERVICES AND PUBLIC VEHICLE PARK (EXCLUDING CONTAINER VEHICLE) WITH ANCILLARY FACILITIES AND ASSOCIATED FILLING OF LAND FOR A PERIOD OF 5 YEARS

SITE LOCATION

LOT 354 IN D.D. 112, SHUI LAU TIN, SHEK KONG, YUEN LONG, NEW TERRITORIES

SCALE

1 : 1000 @ A4

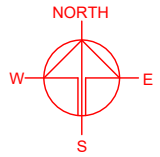
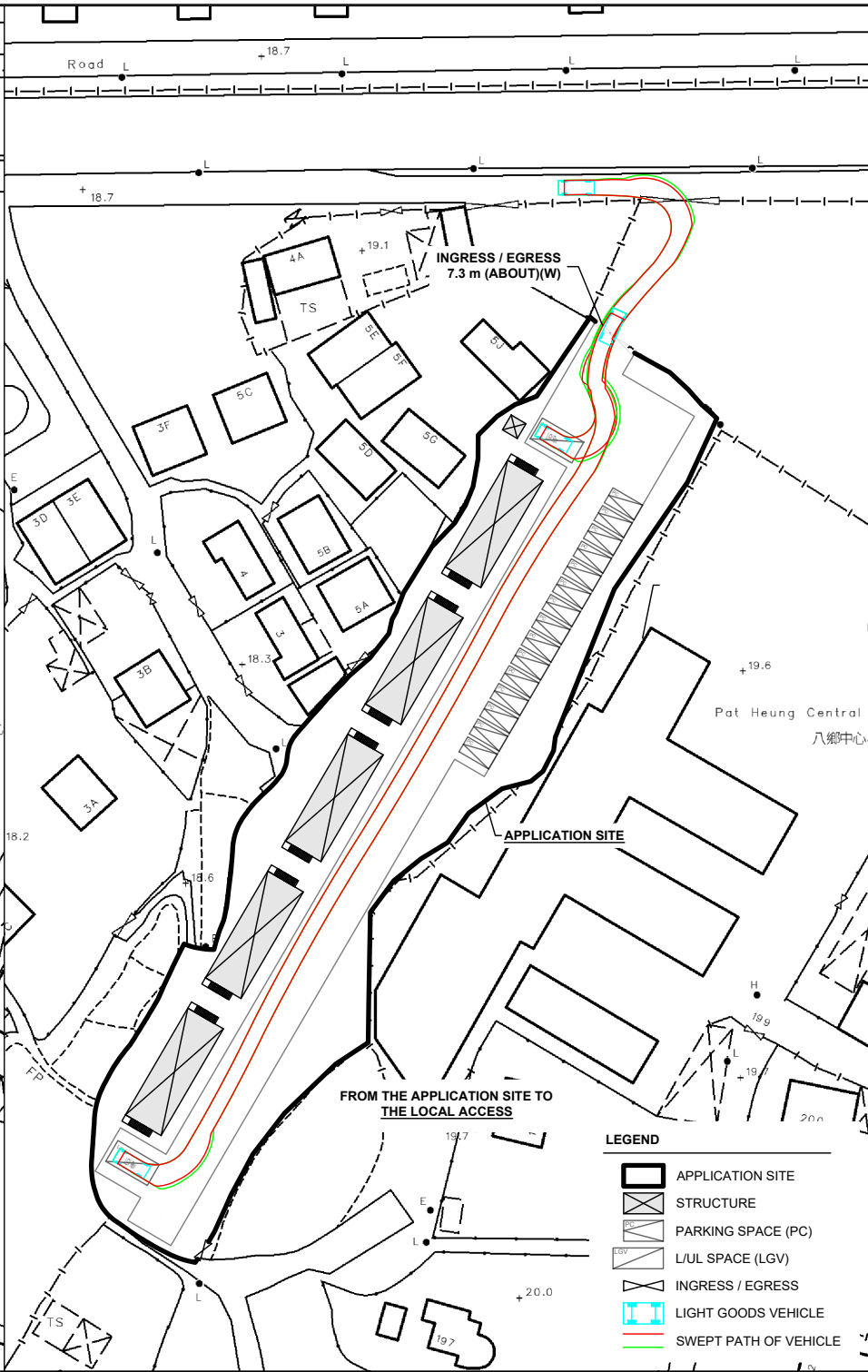
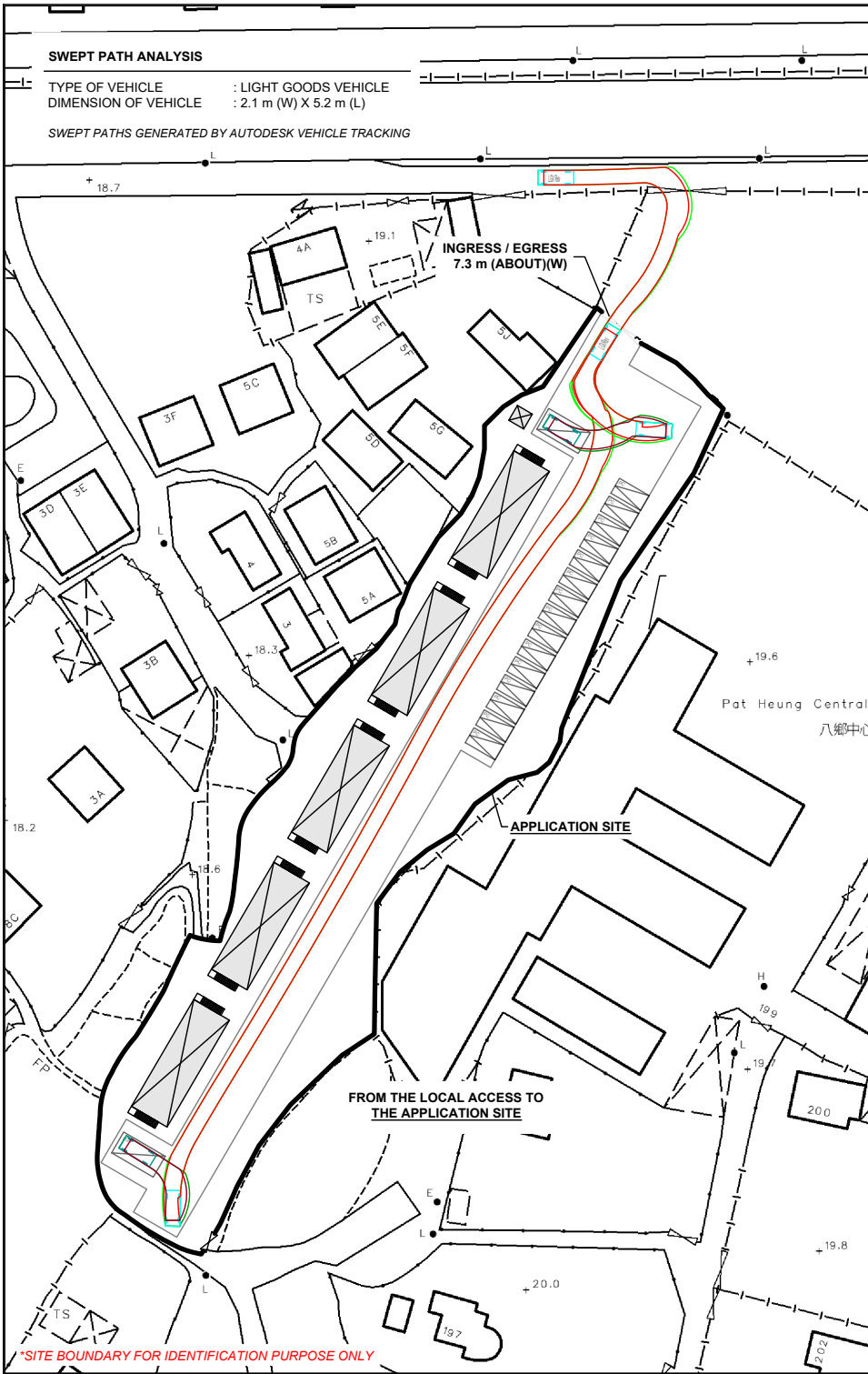
DRAWN BY	DATE
MN	18.8.2025

CHECKED BY	DATE

APPROVED BY	DATE

DWG. TITLE  
FILLING OF LAND

DWG NO. PLAN 5	VER. 001
-------------------	-------------



PLANNING CONSULTANT



PROJECT  
PROPOSED TEMPORARY SHOP  
AND SERVICES AND PUBLIC  
VEHICLE PARK (EXCLUDING  
CONTAINER VEHICLE) WITH  
ANCILLARY FACILITIES AND  
ASSOCIATED FILLING OF LAND  
FOR A PERIOD OF 5 YEARS

SITE LOCATION  
LOT 354 IN D.D. 112, SHUI LAU  
TIN, SHEK KONG, YUEN LONG,  
NEW TERRITORIES

SCALE  
1 : 500 @ A4

DRAWN BY MN	DATE 18.8.2025
CHECKED BY	DATE
APPROVED BY	DATE

DWG. TITLE  
SWEPT PATH ANALYSIS

DWG NO. PLAN 5	VER. 001
-------------------	-------------