

Extracted from Approved Shek Kong Outline Zoning Plan S/YL - SK/9

Not to scale

## Location Plan

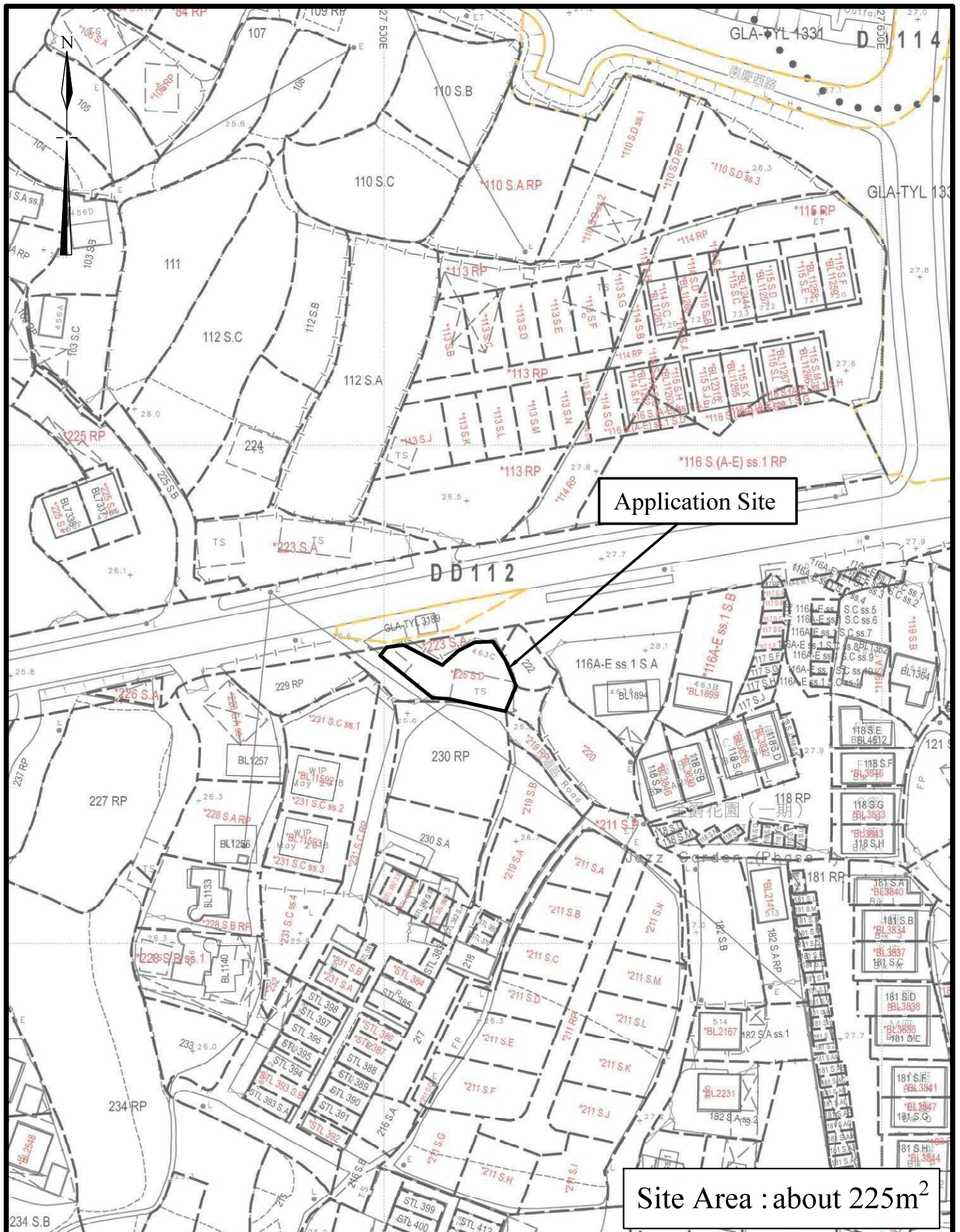
Goldrich Planners & Surveyors Ltd.

September 2025

Lot 225 S.D. (Part) in D. D. 112  
Kam Sheung Road, Yuen Long

Plan 1  
( A 9027 )





1 : 1000

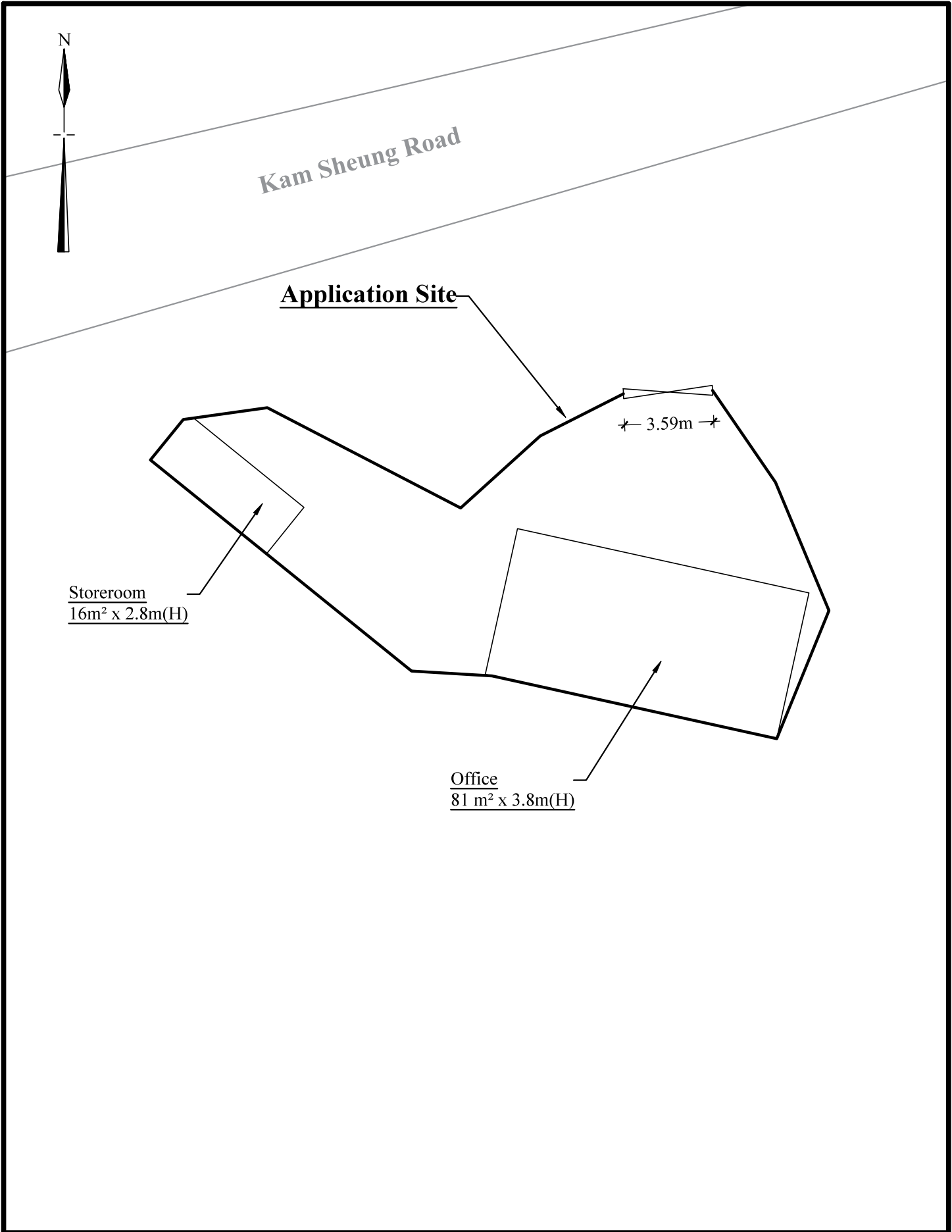
## Lot Index Plan

Goldrich Planners &  
Surveyors Ltd.

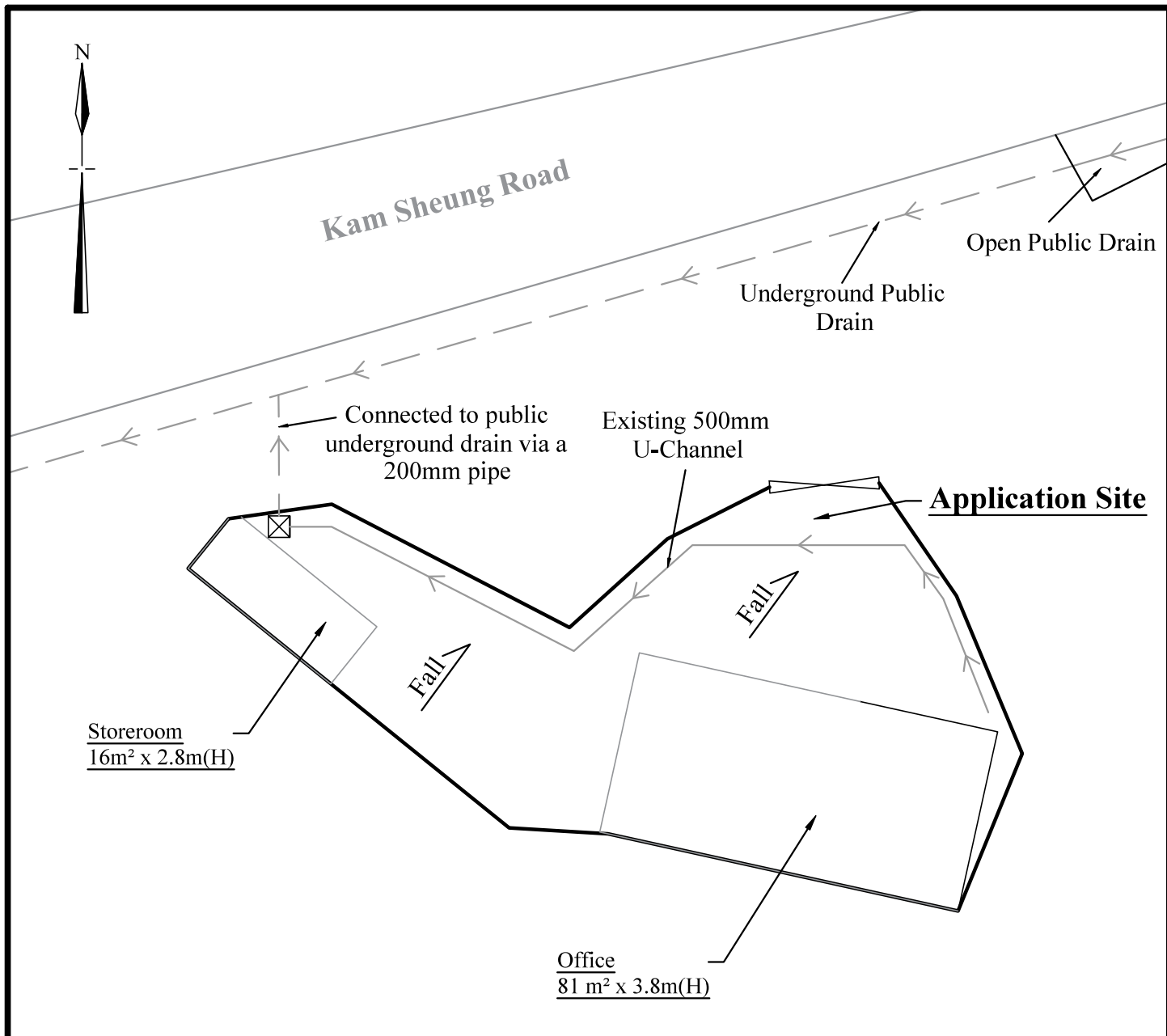
September 2025

Lot 225 S.D. (Part) in D. D. 112  
Kam Sheung Road, Yuen Long

Plan 2  
( A 9027 )



1 : 200	<b>Layout Plan</b>  Lot 225 S.D. (Part) in D. D. 112 Kam Sheung Road, Yuen Long	Goldrich Planners & Surveyors Ltd.
September 2025		Plan 3 ( A 9027 )



### Legend

- ☒ Existing Catchpit
- Existing U-Channel

1 : 200

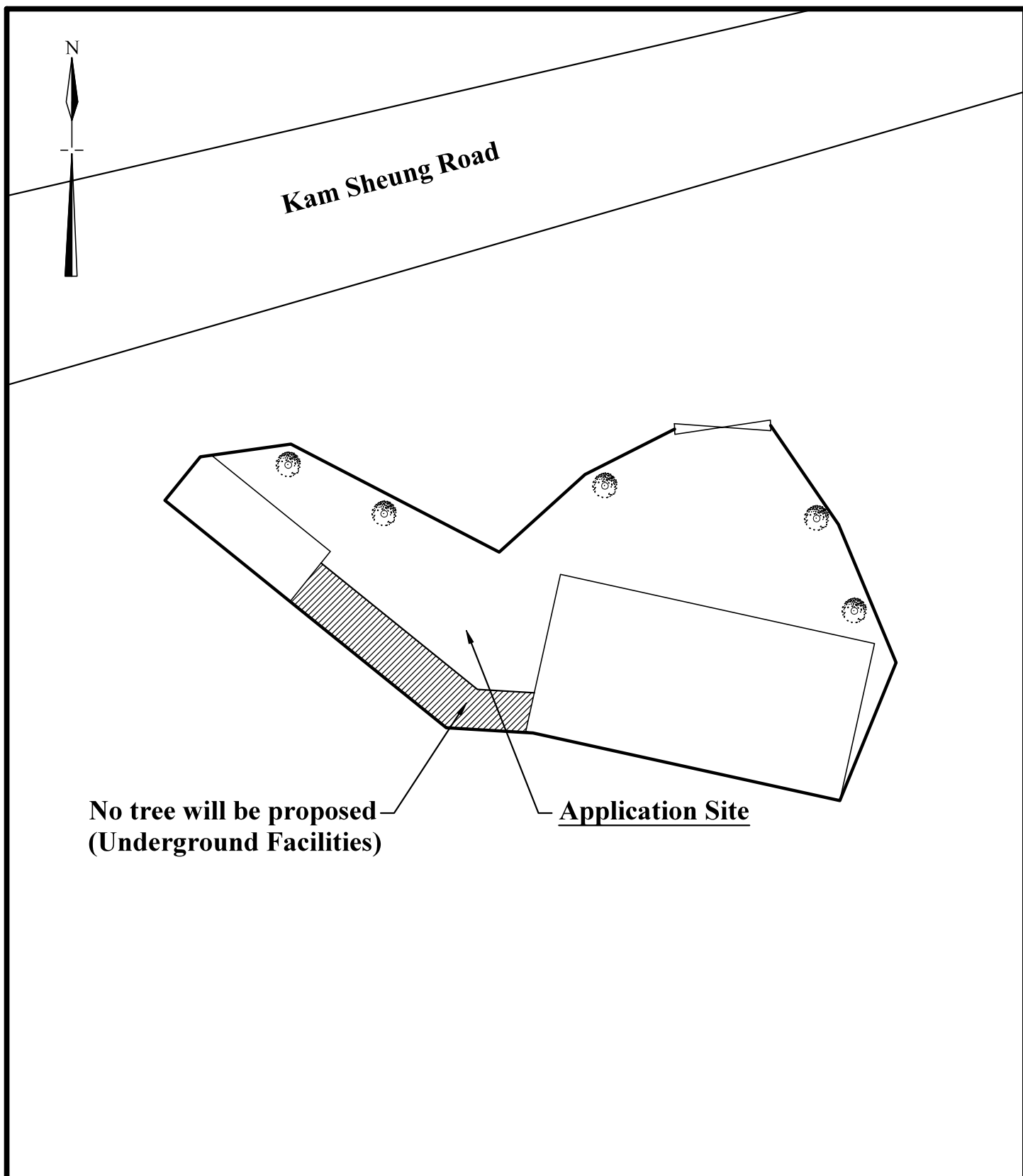
September 2025

### Drainage Proposal (Approved under previous Application No. A/YL-SK/336)

Lot 225 S.D. (Part) in D. D. 112  
Kam Sheung Road, Yuen Long

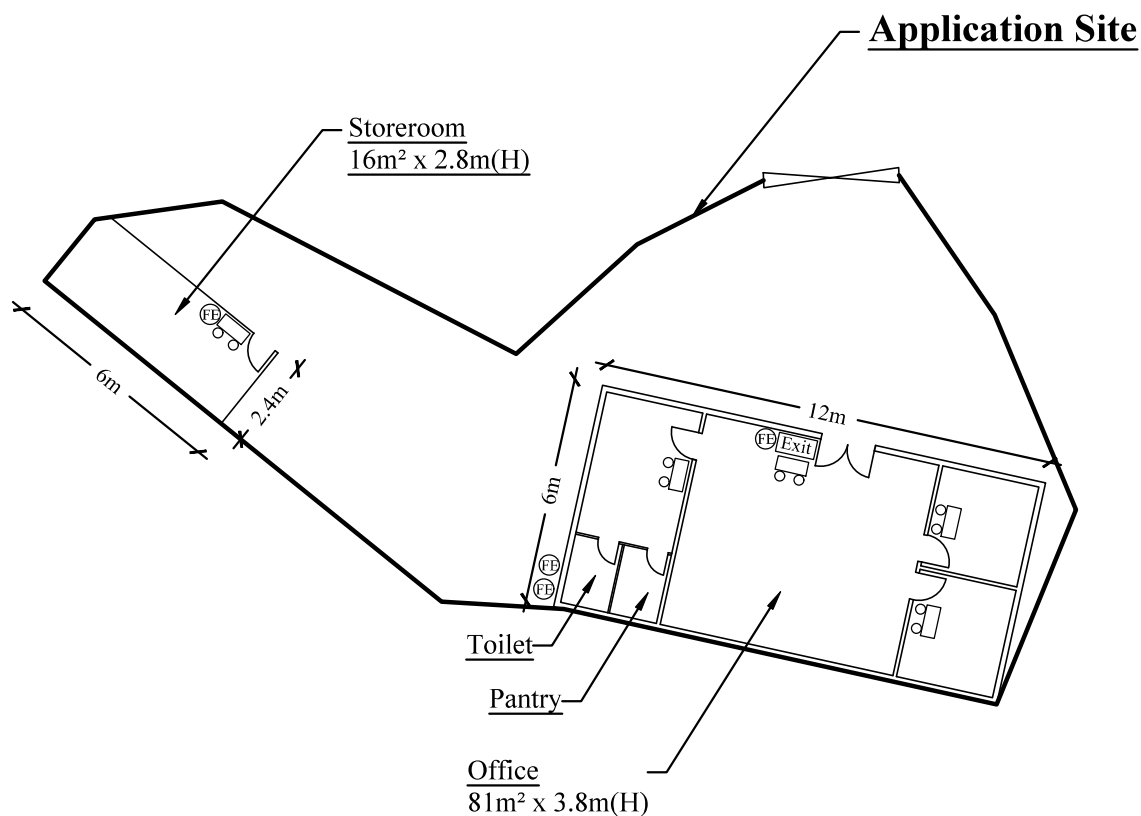
**Goldrich Planners &  
Surveyors Ltd.**

**Plan 4  
( A 9027 )**



**Note: Landscape works has been approved on 6th October 2011 (A/YL-SK/160)  
The existing trees on site are well maintained.**

Existing Trees on Site	Species	Size	Quantity
	 <b>Ficus Microcarpa (細葉榕)</b>	<b>4m (Distance), 2.75m (H)</b>	<b>5 nos.</b>
<b>1 : 200</b>	<b>Landscape and Tree Preservation Plan</b>  <b>Lot 225 D (Part) in D. D. 112 Kam Sheung Road, Yuen Long</b>		<b>Goldrich Planners &amp; Surveyors Ltd.</b>
<b>September 2025</b>			<b>Plan 5 ( A 9027 )</b>



**FS NOTES:**

- (i) Sufficient emergency lighting shall be provided in accordance with BS 5266-1:2016, BS EN 1838:2013 and the FSD Circular Letter No. 4/2021
- (ii) The standards and specifications of the proposed directional and exit sign shall be revised as BS 5266-1:2016 and FSD Circular Letter 5/2008.
- (iii) Portable hand-operated approved appliances shall be provided as required by occupancy.



**Legend :**

5.0公斤二氧化碳氣體滅火筒	5.0kg CO2 Gas type Fire Extinguisher
沙筒	Sand Bucket
出口	Exit sign
緊急照明燈	Emergency Light

**1 : 200**

**Fire Service Installation Proposal  
(Approved under previous  
Application No. A/YL-SK/336)**

**Goldrich Planners &  
Surveyors Ltd.**

**September 2025**

**Lot 225 S.D. (Part) in D. D. 112  
Kam Sheung Road, Yuen Long**

**Plan 6  
( A 9027 )**