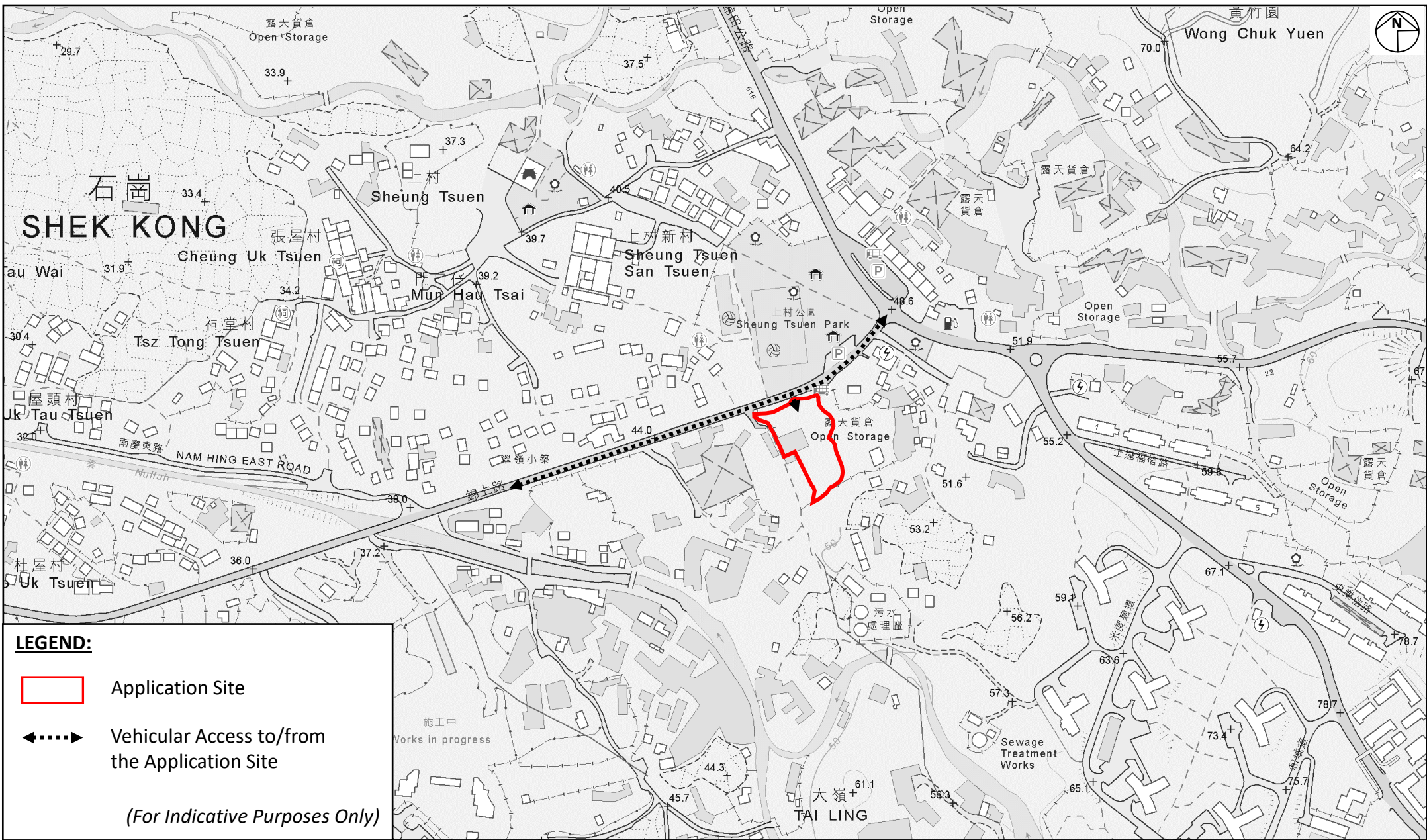


List of Figures

Figure 1	Location Plan
Figure 2	Extract of Lot Index Plan (No. ags_S00000131417_0001)
Figure 3	Extract of Draft Shek Kong Outline Zoning Plan No. S/YL-SK/10
Figure 4	Indicative Layout Plan



Project:
 Section 16 Planning Application for Temporary Shop and Services (Motor-vehicle Showroom) with Ancillary Office and Facilities for a Period of 3 Years at Lot Nos. 786 RP (Part) in D.D. 114, Shek Kong, Yuen Long

Title:
 Location Plan

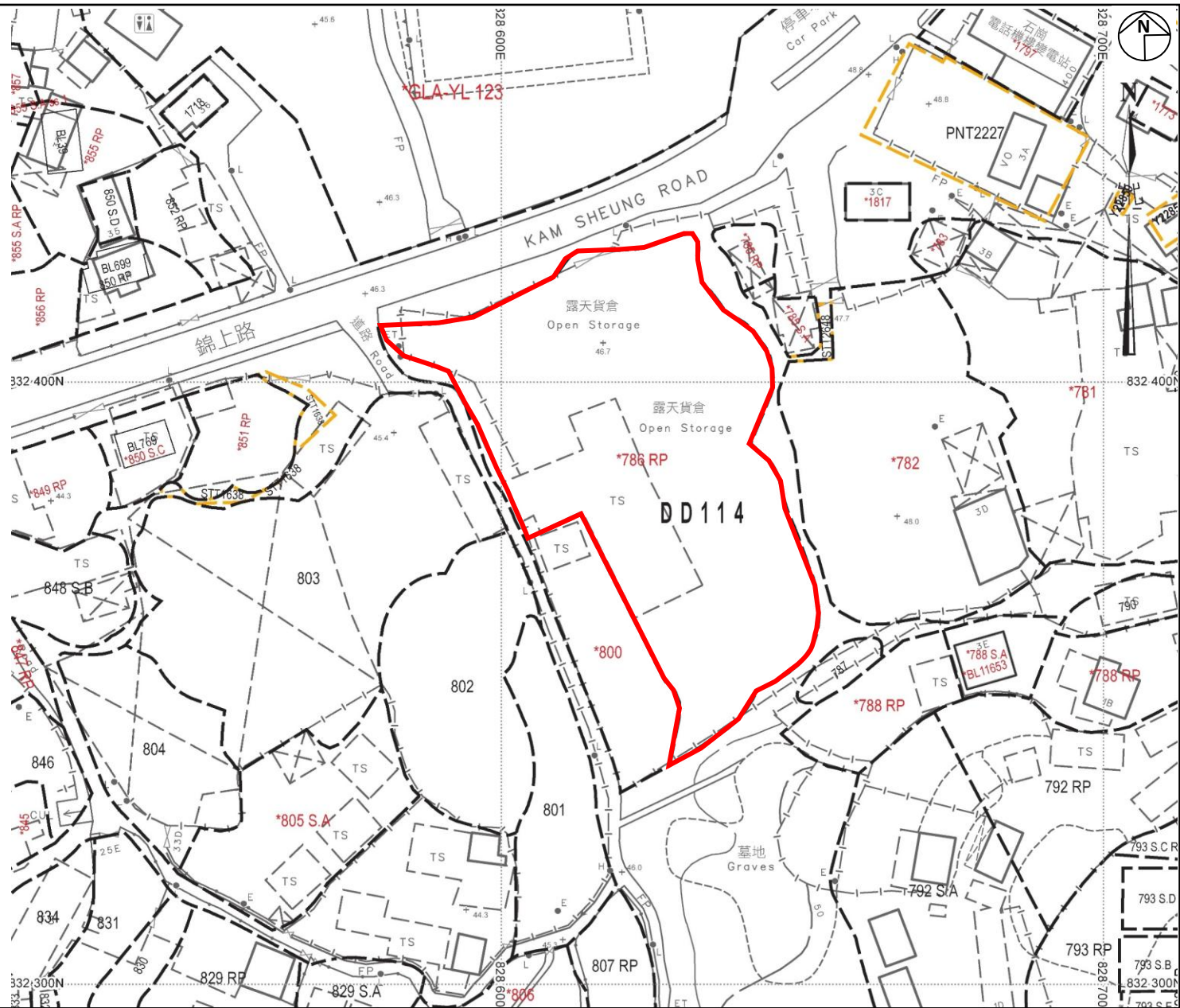
Figure:
 1

Scale:
 Not to Scale

Date:
 Mar 2026



Ref.: XXXXXXXXXX



LEGEND:

 Application Site

(For Indicative Purposes Only)

Project:
 Section 16 Planning Application for Temporary Shop and Services (Motor-vehicle Showroom) with Ancillary Office and Facilities for a Period of 3 Years at Lot Nos. 786 RP (Part) in D.D. 114, Shek Kong, Yuen Long

Title:
 Extract of Lot Index Plan
 (No. ags_S00000155368_0001)

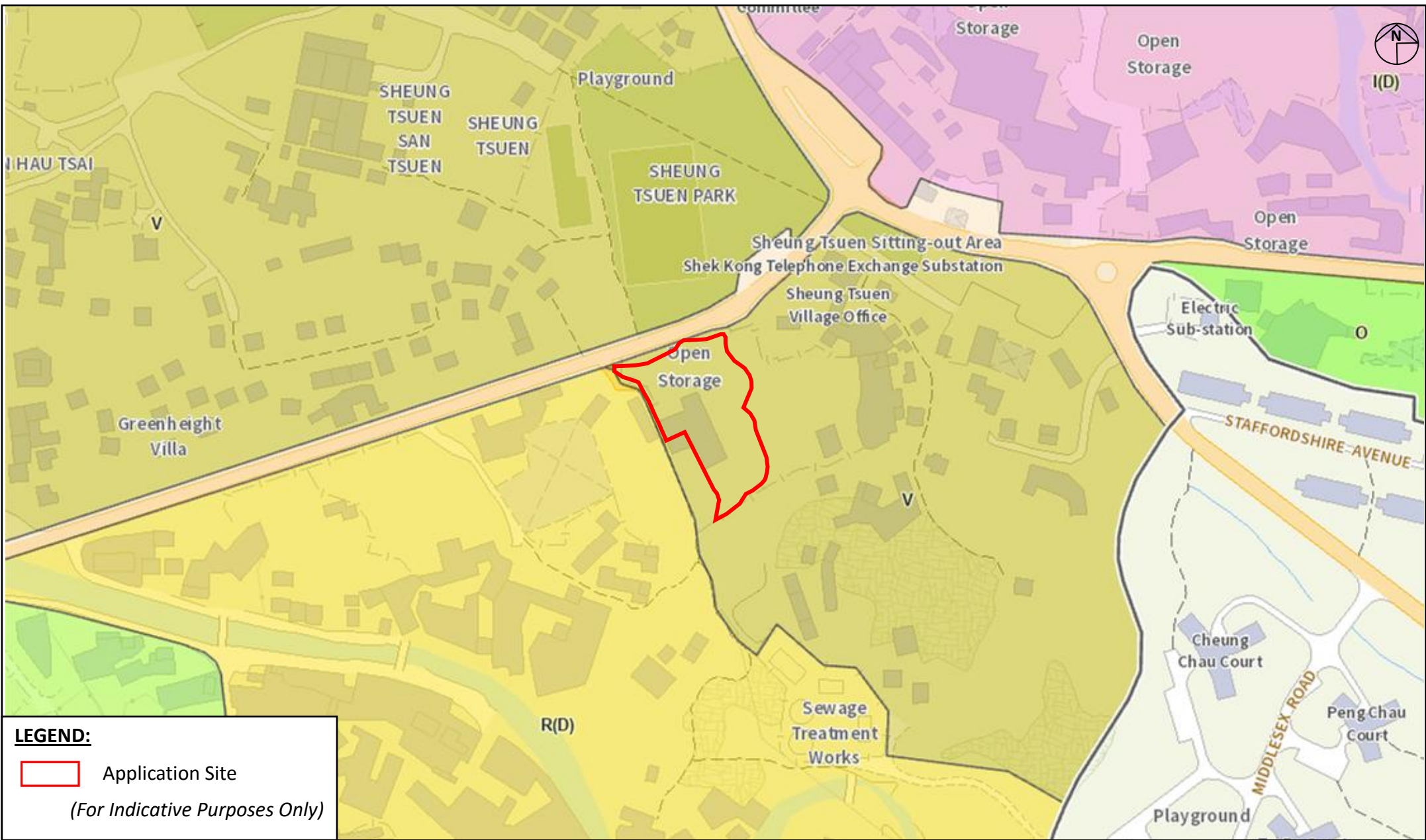
Figure:
 2

Scale:
 Not to Scale

Date:
 Mar 2026



Ref.: 



LEGEND:



Application Site

(For Indicative Purposes Only)

Project:
Section 16 Planning Application for Temporary Shop and Services (Motor-vehicle Showroom) with Ancillary Office and Facilities for a Period of 3 Years at Lot Nos. 786 RP (Part) in D.D. 114, Shek Kong, Yuen Long

Title:
Extract of the Draft Shek Kong Outline Zoning Plan No. S/YL-SK/10

Figure:
3
Scale:
Not to Scale

Date:
Mar 2026

MC Man Chi
Consultants And Construction Limited

Ref.: [REDACTED]

DEVELOPMENT PARAMETERS

APPLICATION SITE : 2,980 m²(About)
 COVERED AREA : 675 m²(About)
 UNCOVERED AREA : 2,305 m²(About)
 TOTAL FLOOR AREA : 900 m²(About)

PARKING AND LOADING/UNLOADING PROVISION

PARKING SPACE (PC) : 3 Nos. (5 M(L) X 2.5 M(W))
 PARKING SPACE (M/HGV) : 2 Nos. (11 M(L) X 3.5 M(W))
 L/UL SPACE (M/HGV) : 1 Nos. (11 M(L) X 3.5 M(W))

STRUCTURE

S1
 S2
 S3

USES

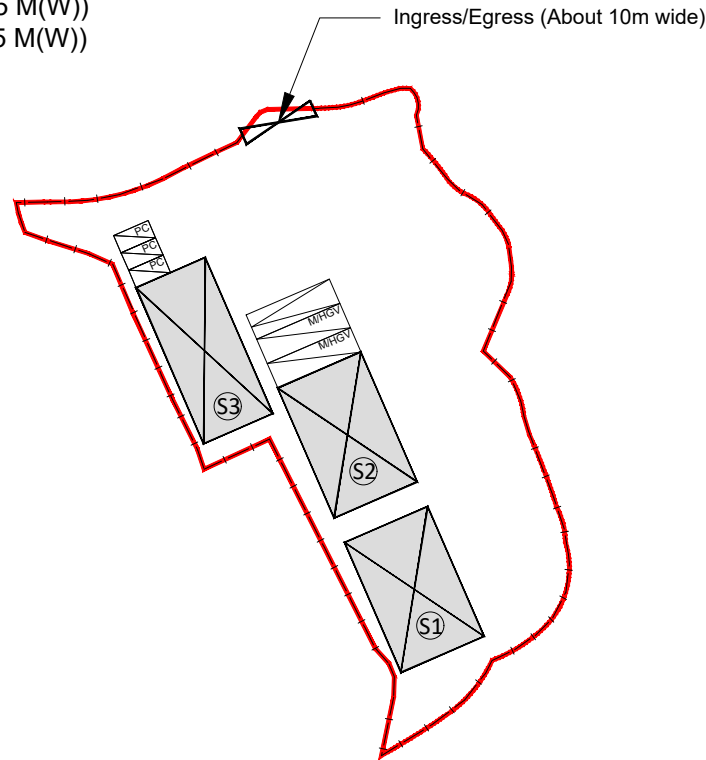
Motor-Vehicle Showroom
 Motor-Vehicle Showroom
 Ancillary Site Office/
 Storage of Vehicles
 (including open-shed structure on G/F)
 TOTAL

FLOOR AREA

225 m²(About)
 225 m²(About)
 450 m²(About)
 900 m²(About)

BUILDING HEIGHT

10m (Not More Than) (1-Storey)
 10m (Not More Than) (1-Storey)
 10m (Not More Than) (2-Storey)



LEGEND

- Application Site Boundary
- Boundary Fencing of Not More Than 3.5m
- Structure
- Parking Space (Private Car)
- Parking Space (M/HGVs)
- Loading and Unloading Bay (M/HGVs)
- Ingress/Egress (About 10m Wide)

Project:
 Section 16 Planning Application for Temporary Shop and Services (Motor-vehicle Showroom) with Ancillary Office and Facilities and Associated Filling of Land for a Period of 3 Years at Lot Nos. 786 RP (Part) in D.D. 114, Shek Kong, Yuen Long

Title:
 Indicative Layout Plan

Figure:
 4
Scale:
 Not to Scale

Date:
 Apr 2026

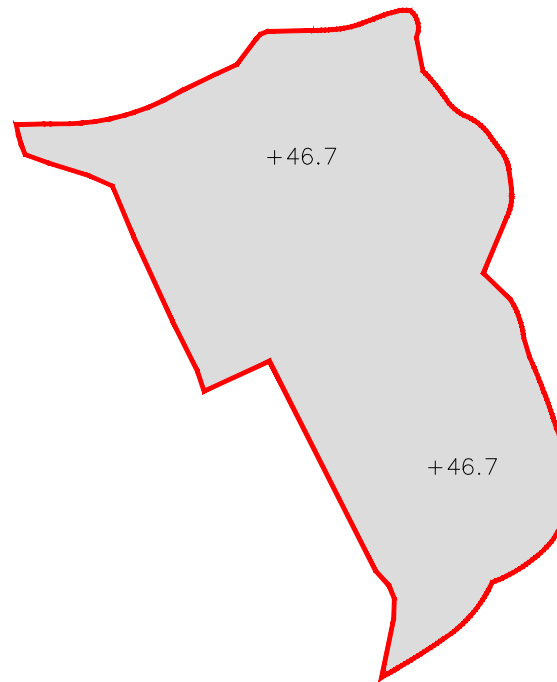
Ref.:






FILLING OF LAND

APPLICATION SITE AREA : 2,980 m²(About)
EXISTING PAVED AREA : 2,980 m²(About)
DEPTH OF LAND FILLING : About 0.8m
LAND FILLING MATERIAL : CONCRETE/SOIL

REMARKS: THE APPLICATION SITE HAS BEEN PAVED. NO ADDITIONAL FILLING OF LAND IS REQUIRED UNDER THE CURRENT APPLICATION.



LEGEND

-  Application Site Boundary
-  Filling of Land
-  +46.7 Existing Level

Project:
Section 16 Planning Application for Temporary Shop and Services (Motor-vehicle Showroom) with Ancillary Office and Facilities and Associated Filling of Land for a Period of 3 Years at Lot Nos. 786 RP (Part) in D.D. 114, Shek Kong, Yuen Long

Title:
Land Filling Plan

Figure:
5
Scale:
Not to Scale

Date:
Apr 2026

Ref.: 