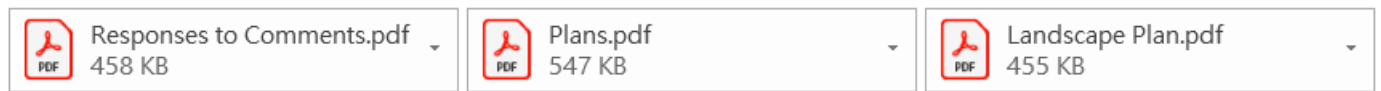


From: [REDACTED]
Sent: Saturday, March 29, 2025 4:28 PM
To: Leticia Ching Sze LEUNG/PLAND <lcsleung@pland.gov.hk>; tpbpd/PLAND <tpbpd@pland.gov.hk>
Cc: Eva Ka Yan TAM/PLAND <ekytam@pland.gov.hk>
Subject: Application No. A/YL-TT/700 - Submission of Further Information



Dear Leticia,

Please find attached the R to C Table and new/revised plans for your further processing.

Regards,

P.Y. Yung
for CTA Limited

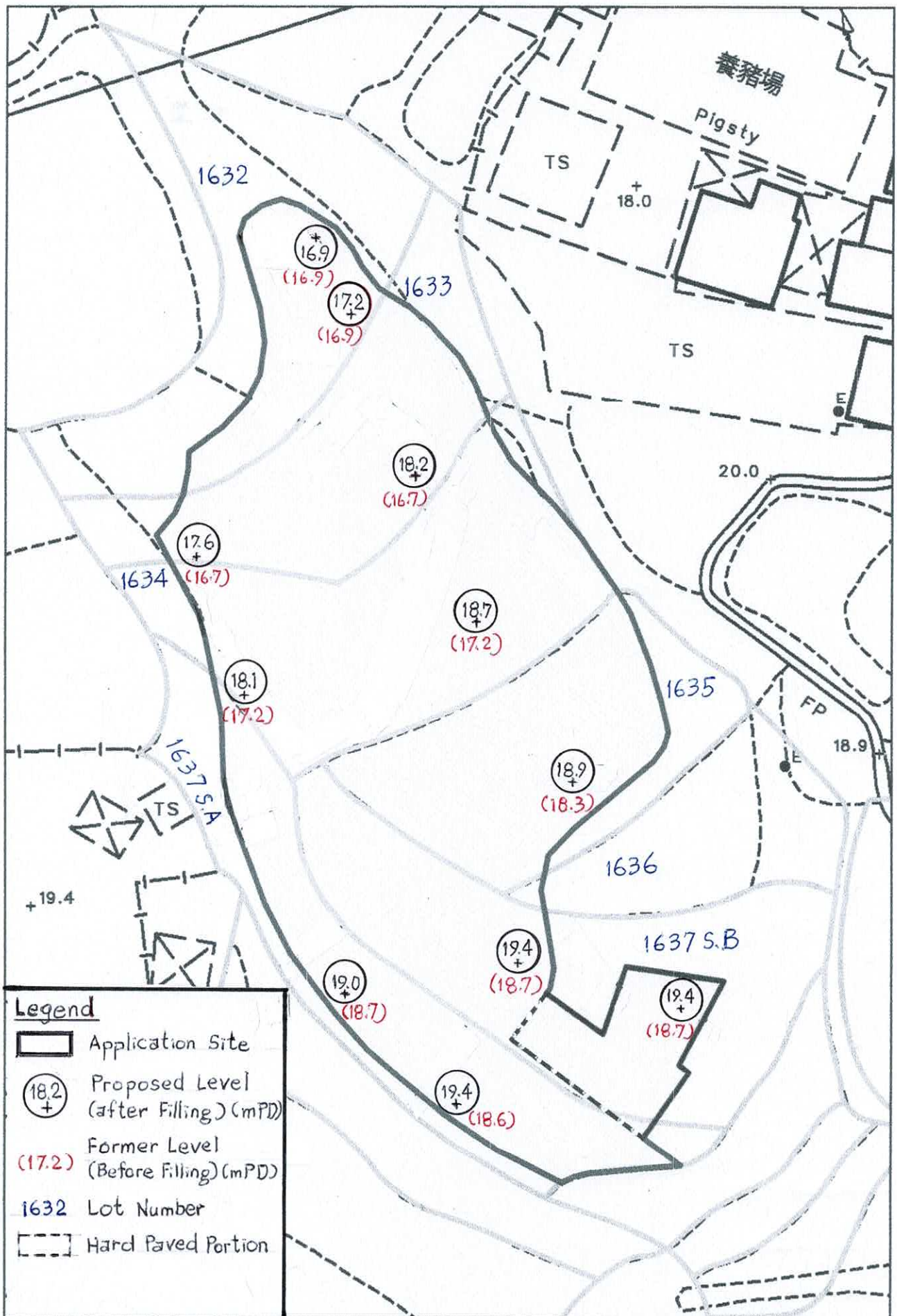
R to C Table

	Departmental Comments	Applicant's Response
1. Comments of Director of Agriculture, Fisheries and Conservation (DAFC)		
(a)	No strong view against the proposed filling of land for permitted agricultural use, on the condition that the part filled with concrete will be reinstated for agricultural use.	Agreed. When the organic farm ceases operation, the hard paved area will be reinstated to greenery or a state suitable for agricultural use
2. Comments of District Planning Officer/Tuen Mun & Yuen Long West, PlanD		
(a)	Apart from the section plan, please advise plan(s) showing the changes of level (indicating before and after, in terms of mPD, of the proposed filling of land);	Noted. Plan showing changes of level before and after filling is provided (Plan 2c).
(b)	Please provide an updated version of Plan 3 showing the legends of the plan;	Noted. Plan 3 revised.
(c)	Please clarify the necessity to fill part of the land with concrete permanently instead of temporary in nature.	As mentioned in the justifications, the hard paved area of about 6.2% would stabilize the structures which are for provision of ancillary uses and agricultural storage. It is required as long as the existing organic farm maintains operation. It will be reinstated when the farm ceases to operate (please see response to AFCD above).
3. Comments of Chief Town Planner/Urban Design & Landscape, PlanD		
(a)	In Plan 2b and Plan5c, the intention to propose edge planting at the periphery within the application boundary are noted. The applicant should provide a landscape plan with proposed edge planting works details, including the plant species, nos. and locations within the application site, so as to demonstrate measure(s) for mitigating the impact caused by the proposed use. The proposed landscape plan should be provided for further consideration.	Noted. A Landscape Plan is provided (Plan 2d). Some species, including <i>Prunus salicina</i> , lychees, mangoes, pineapples, lemongrass and <i>Bidens pilsa</i> have already been successfully grown at the Site. The proposed species are flexible. Should CTP/UD&R consider that individual species are not suitable, they could be readily replaced by the acceptable species.

Landscape Proposal

Upgrading the planting around the edge of the Site boundary can enhance the landscape setting by using 3 different layers of planting. Starting with the lowest layer is the ground cover planting at the embankments using *Bidens pilsa* (鬼針草) and *Ipomoea nil* (牽牛). The middle layer includes plants of medium height such as pineapple (菠蘿), lemongrass (香茅) and *Colocasia antiquorum* Schott (野芋). At the platform edge, alternate planting of fruit trees including *Prunus salicina* (南華李), lychees (荔枝) and mangoes (芒果) would be provided. These layers of planting can serve as a smooth transition from the cultivation/sheep raising areas to the platform edge and embankments to beautify the fringe of the Site. Besides, planting of sunflowers (向日葵) and *Bougainvillea spectabilis* (簕杜鵑) would further the landscape amenity of the farm (See **Plan 2d**). Planting details are shown in the following table:

Type	No. (about)	Spacing (about)	Height (about)	Remark/Other Requirements
Lowest Layer				
Bidens pilsa	N.A.	Applied uniformly at embankments	Ground Cover Planting	Frequent pruning to prevent overgrowth
Ipomoea nil	N.A.			
Medium Layer				
Pineapple	15	5m	1m	N.A.
Colocasia antiquorum Schott	12	5m	1.5m	Regular pruning required
Lemongrass	10	5m	2m	N.A.
Upper Layer				
Lychees/Mango/Prunus salicina	50	4m	Above 2.75m	Regular pruning required
Others				
Bougainvillea spectabilis	4	As shown on Plan 2d	2.5m	Regular pruning required
Sunflower	N.A.	As shown on Plan 2d Row spacing about 1m and cultivated on ridge of 0.3m high	N.A.	Good drainage required



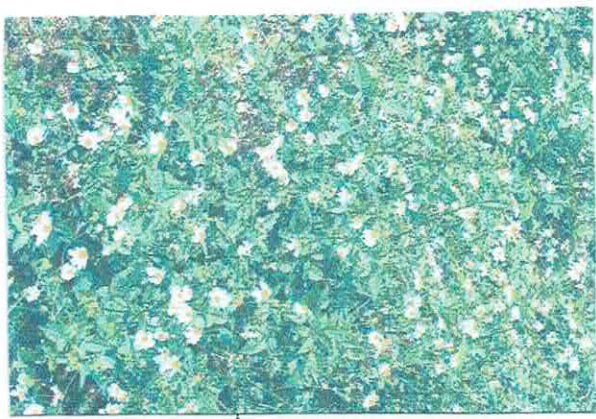
Plan 2c

**Filling Plan
(Before & After)**

Scale 1:500



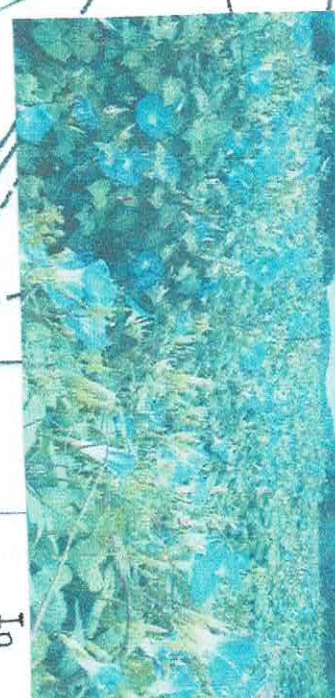
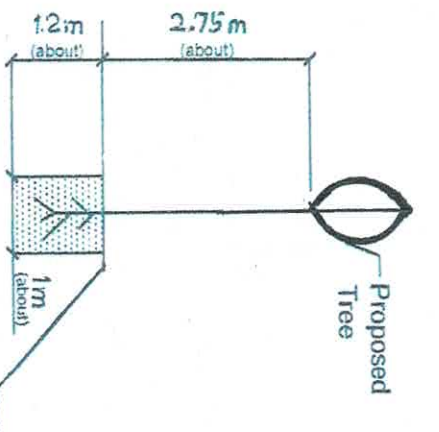
Pa



Bp



Lg



In



Ca

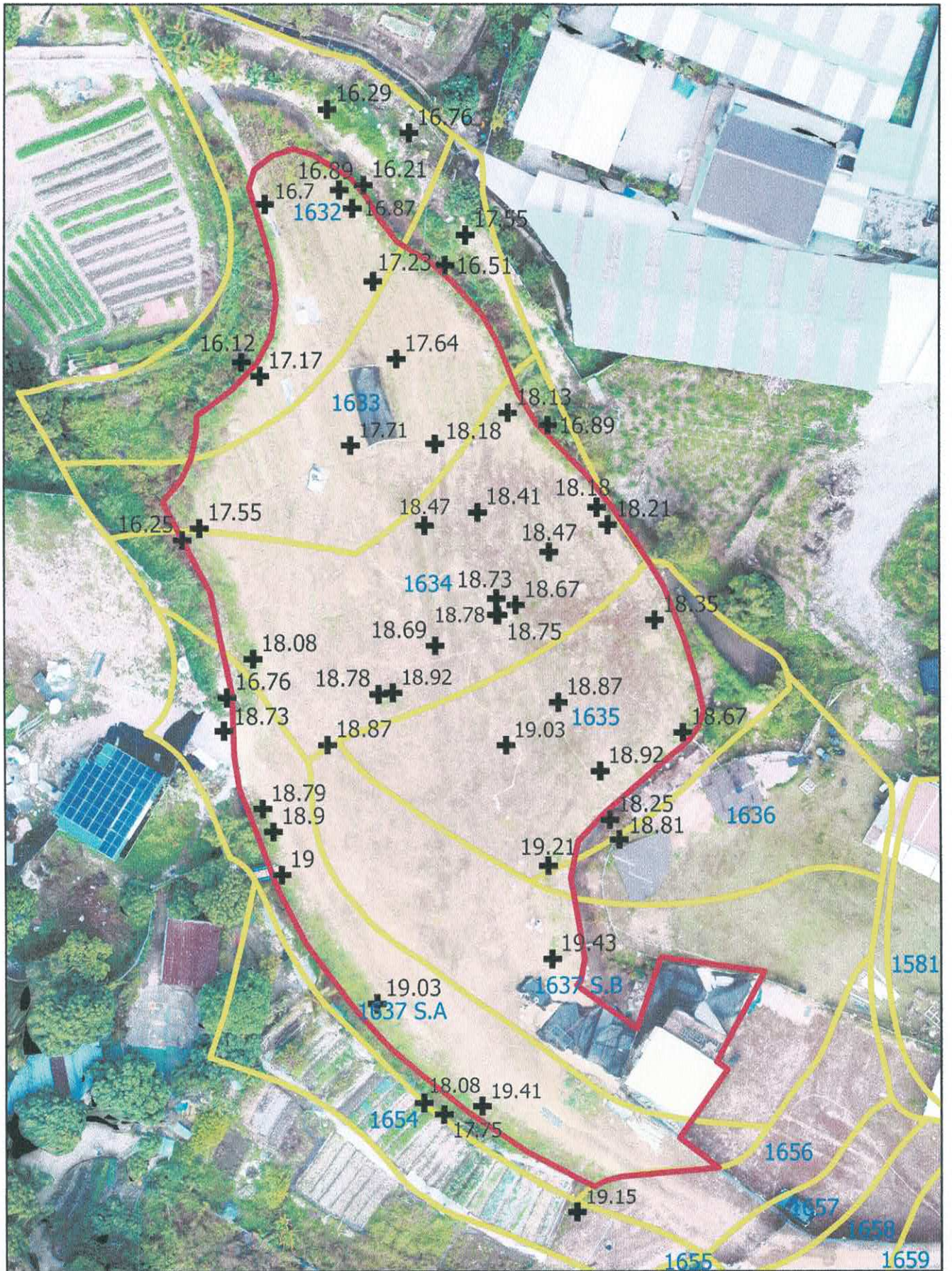
	Application Site
	Proposed Scrub (4 Nos.)
	Bougainvillea spectabilis 簕杜鹃(BS)
	Proposed Fruit Tree (50 Nos.)
	Mango/Lychee/Prunus salicina(南華李)
	Proposed Embankment Planting
	Bidens pilosa 鬼針草(Bp)
	Ipomoea nil 牽牛(In)
	Pineapple 菠蘿(Pa)
	Lemongrass 香茅(Lg)
	Colocasia antiquorum Schott 野芋(Ca)
	Sunflower 向日葵(Sf)

Landscape Plan

Plan 2d

Scale 1:500





Plan 3

Aerial Photo

Legend

- Lots with Lot number (blue)
- Application Site
- Level Surveyed in mPD. (Dec 2024)