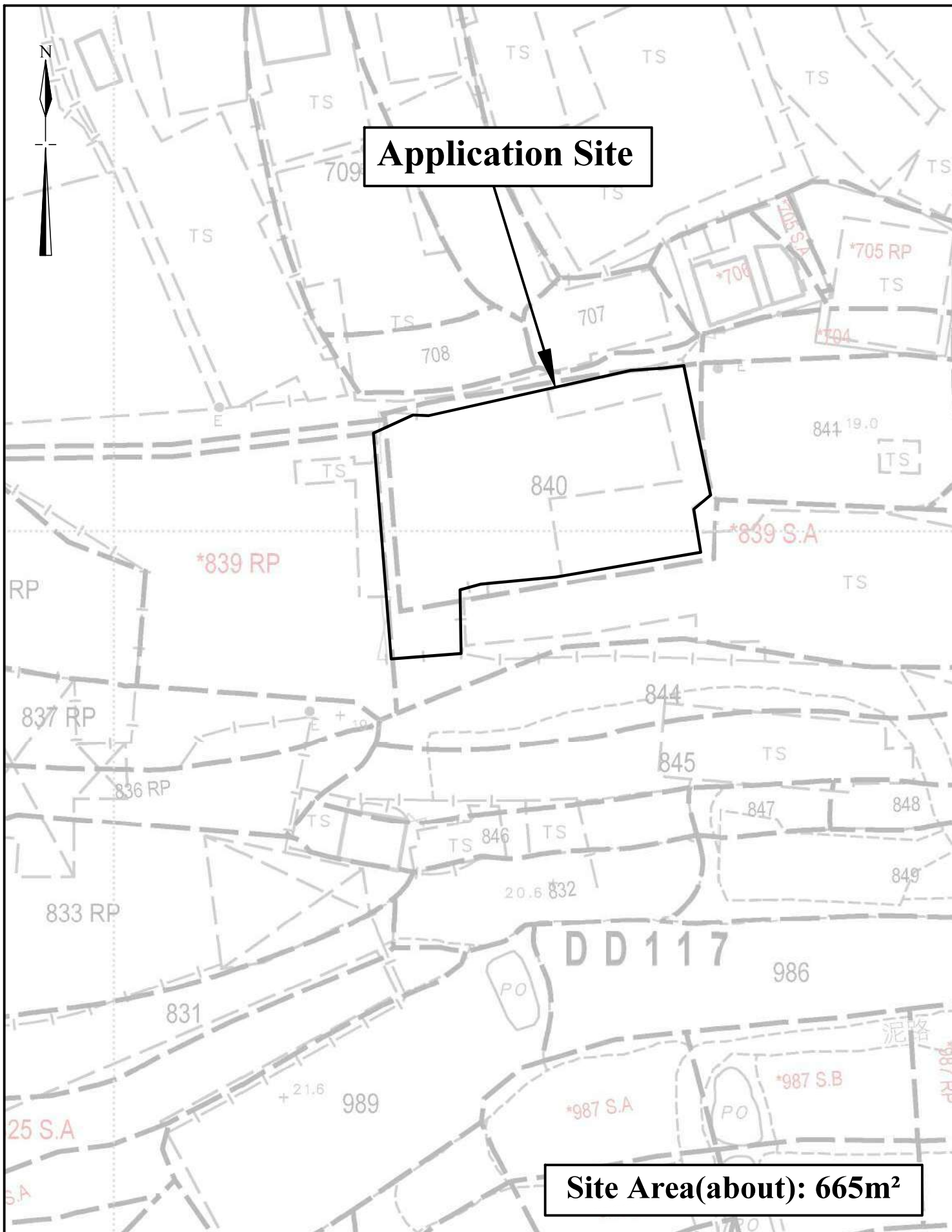
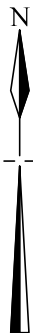


**Extracted from Approved Tai Tong Outline Zoning Plan No. S/YL-TT/20**

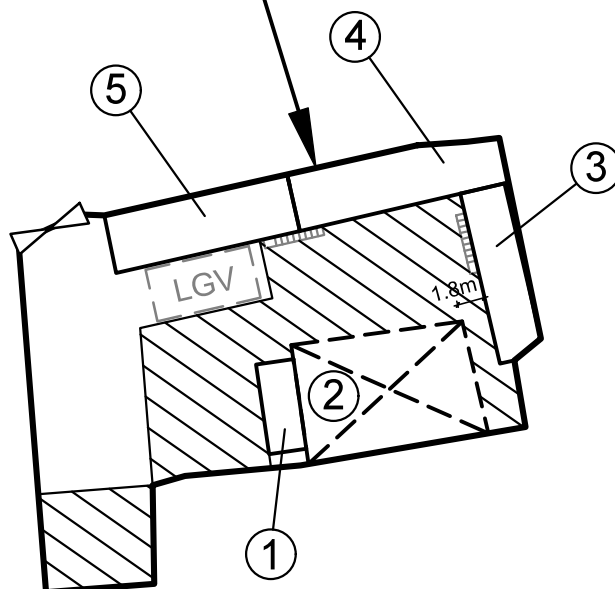
N.T.S	<b>Location Plan</b>	<b>Goldrich Planners &amp; Surveyors Ltd.</b>
<b>August 2025</b>	Lots 839 S.A(part) and 840(part) in DD.117 Yuen Long, N.T	<b>Plan 1 ( P 25054 )</b>



1:500	Lot Index Plan  Lots 839 S.A(part) and 840(part) in DD.117 Yuen Long, N.T	Goldrich Planners & Surveyors Ltd.
August 2025		Plan 2 ( P 25054 )



## Application Site



### Legend:



Vehicular Ingress/ Egress



Parking space for light goods vehicle  
(7m (L) x 3.5m (W))



Staircase



Open storage Area  
(about 255m<sup>2</sup>)

**Site Area(about): 665m<sup>2</sup>**

No.	Uses		Floor Area (about)	Covered Area (about)	Storeys	Height
1	Container Storage		15 m <sup>2</sup>	15 m <sup>2</sup>	1	2.5m
2	Warehouse		91 m <sup>2</sup>	91 m <sup>2</sup>	1	4.5m
3	G/F	Storage with Ancillary Office	34 m <sup>2</sup>	34 m <sup>2</sup>	2	7m
	1/F	Sitting/resting area for staff	34 m <sup>2</sup>			
4	Storeroom		52 m <sup>2</sup>	52 m <sup>2</sup>	1	4.5m
5	G/F	Storage with Ancillary Office	48 m <sup>2</sup>	48 m <sup>2</sup>	2	7m
	1/F	Sitting/resting area for staff	48 m <sup>2</sup>			
Total			<u>322 m<sup>2</sup></u>	<u>240 m<sup>2</sup></u>		

1:500

### Layout Plan

**Goldrich Planners &  
Surveyors Ltd.**

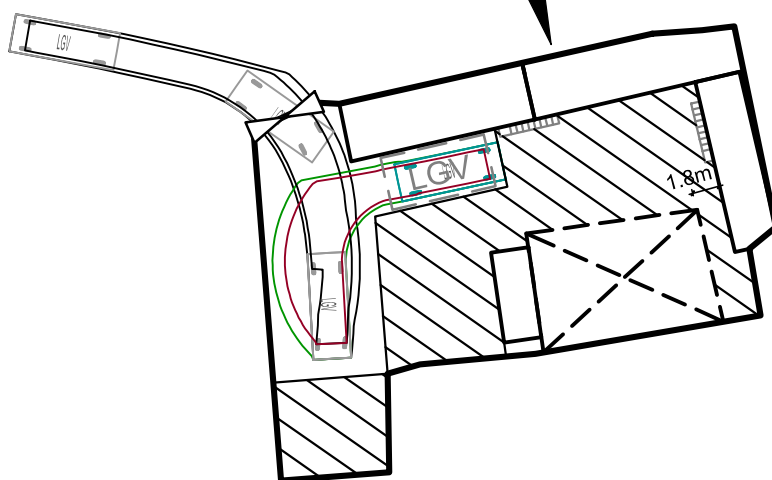
**August 2025**

**Lots 839 S.A(part) and 840(part) in DD.117  
Yuen Long, N.T**

**Plan 3  
( P 25054 )**



## Application Site



### Legend:



Vehicular Ingress/ Egress



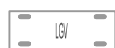
Parking space for light goods vehicle  
(7m (L) x 3.5m (W))



Staircase



Open storage Area  
(about 255m<sup>2</sup>)



light goods vehicle  
(7m (L) x 2.5m (W))

1:500

### Swept Path Analysis

**Goldrich Planners &  
Surveyors Ltd.**

**August 2025**

**Lots 839 S.A(part) and 840(part) in DD.117  
Yuen Long, N.T**

**Plan 4  
( P 25054 )**