

LIST OF APPENDICES

Appendix I	Details of the Affected Business Premises
Appendix II	Details of Alternative Sites for Relocation

Appendix I

Details of the Affected Business Premises

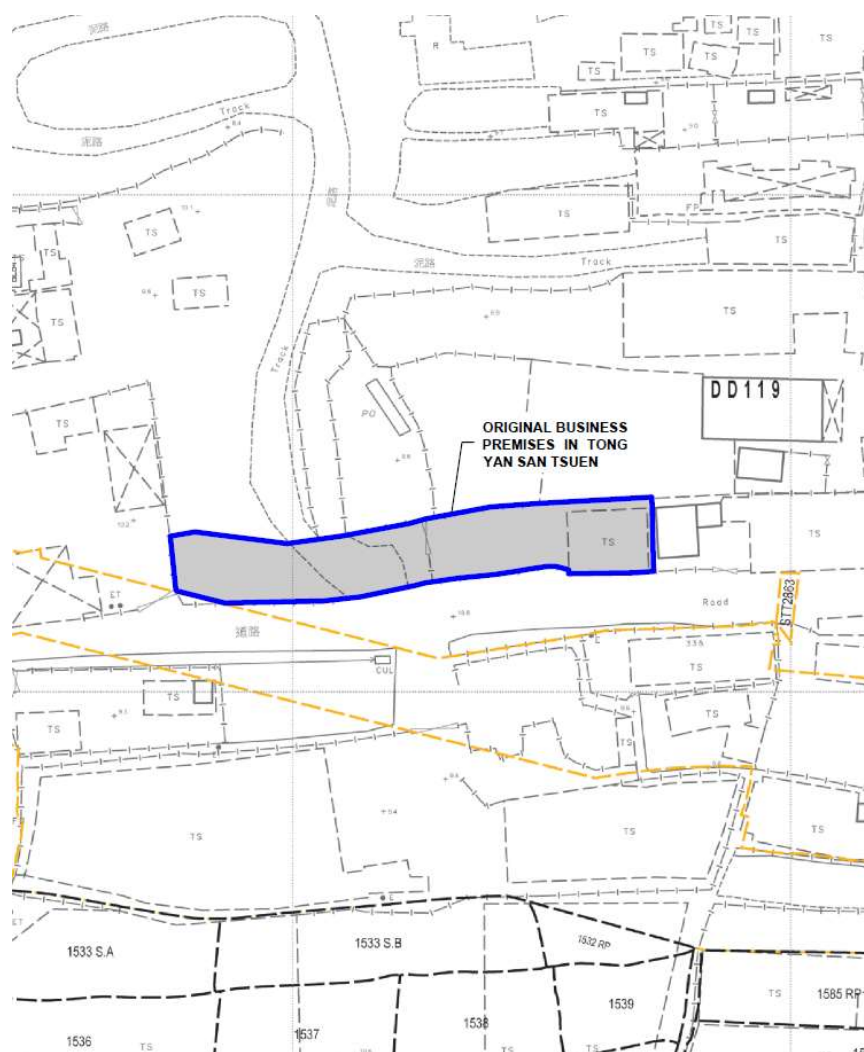
Appendix I - Details of the Affected Business Premises

Company Name: **Surplus Success Engineering Limited** 成利工程有限公司

Details of the Affected Business Premises

Location: Lot 1523 RP (Part) in D.D. 119, Tong Yan San Tsuen, Yuen Long, New Territories
(This private lot was reverted to the Government on 21.05.2025)

Use of Premises: Warehouse for Storage of Construction Materials, Construction Machinery, Used Electrical/Electronic Appliances and Parts and Scrap Metal



Site Photos of the Affected Business Premises



Source: GeoInfo Map



Source: GeoInfo Map

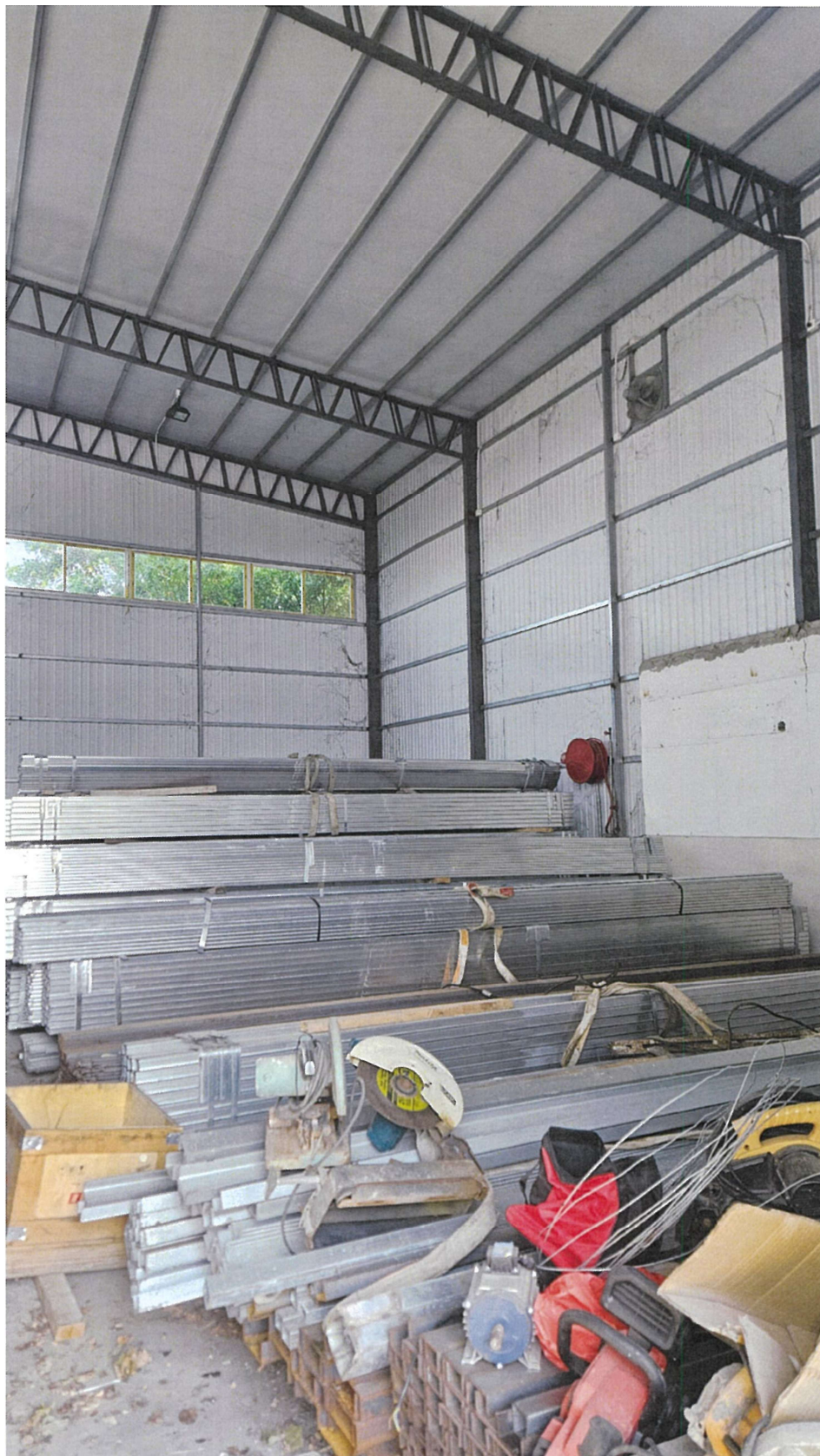




7



8



Land Resumption Notice (G.N. 972) dated 20.02.2025

G.N. 972

LANDS DEPARTMENT

ROADS (WORKS, USE AND COMPENSATION) ORDINANCE (Chapter 370)
(Notice under section 14)

RESUMPTION OF LAND FOR
PWP ITEM NO. 7827CL (PART)
ROAD WORKS UNDER YUEN LONG SOUTH DEVELOPMENT—
SECOND PHASE DEVELOPMENT

TAKE NOTICE that under powers delegated by the Chief Executive of the Hong Kong Special Administrative Region, the Deputy Director/Specialist, Lands Department has made an order under section 13(1) of the Roads (Works, Use and Compensation) Ordinance (Chapter 370) (hereinafter referred to as 'the Ordinance') directing that all those pieces or parcels of land in the New Territories more particularly described below:—

Lots Nos. 1138 (Portion), 1139 (Portion), 1165 RP, 1166 S.A RP, 1166 S.B RP, 1167 (Portion), 1175 (Portion), 1176, 1184, 1185 (Portion), 4288 S.B, 4289, 4290 (Portion), 4583 S.A RP (Portion), 4584 RP (Portion), 4585 RP (Portion), 4594 RP (Portion), 4746 S.B RP (Portion), 4746 S.C RP, 4746 RP (Portion), 4748 RP (Portion) and 4750 S.A RP all in Demarcation District No. 116;

Lots Nos. 710, 711, 712, 713, 714, 716 RP, 717 RP, 718 RP, 720 RP (Portion), 721 RP, 722 RP, 723 RP, 724 S.B, 724 RP, 725 (Portion), 726 (Portion), 728 (Portion), 729 (Portion), 736 (Portion), 737 RP (Portion), 738 S.B, 738 S.C (Portion), 738 RP (Portion), 740 RP, 742 RP (Portion), 743 RP (Portion), 779 (Portion), 780 S.A (Portion), 781 (Portion), 782 RP (Portion), 783 (Portion), 799 RP (Portion), 800 RP (Portion), 801 RP (Portion), 802 RP (Portion), 803 RP (Portion), 804 RP, 805 RP, 806 RP (Portion), 807 RP, 808 RP, 813 RP, 814, 815 RP, 816 RP, 817 RP, 818 (Portion), 820 (Portion), 822 (Portion), 824 (Portion), 825 RP (Portion), 826 (Portion), 829 RP, 830 RP, 833 (Portion), 834 RP, 835, 836 (Portion), 837 (Portion), 838 (Portion), 1020 RP, 1021, 1022 (Portion), 1876 RP, 1877 (Portion), 1881 (Portion), 1882 (Portion), 1887 (Portion), 1889 (Portion), 1890 RP (Portion), 1891 (Portion), 1894 RP (Portion), 1901 RP (Portion), 1929 (Portion) and 1930 (Portion) all in Demarcation District No. 117;

Lots Nos. 242 RP (Portion), 243 S.A RP (Portion), 243 S.B (Portion), 243 RP (Portion), 244 (Portion), 245 (Portion), 250 (Portion), 251 (Portion), 252, 253 RP (Portion), 254 (Portion), 255, 256 S.A RP, 256 RP, 260 RP, 261 S.A (Portion), 261 RP (Portion), 268 RP, 269 (Portion), 270 RP, 271 RP, 272 RP (Portion), 273 (Portion), 314 RP (Portion), 315 (Portion), 316 (Portion), 317 (Portion), 319 (Portion), 320 (Portion), 322 S.A (Portion), 324 (Portion), 325 (Portion), 326 (Portion), 327 S.A (Portion), 327 S.A ss.1 (Portion), 327 S.B (Portion), 327 S.C (Portion), 327 S.E RP (Portion), 328 (Portion), 334 (Portion), 337 RP (Portion), 338 RP (Portion), 341 (Portion), 342 RP (Portion), 345 (Portion), 346 S.A (Portion), 347 RP (Portion), 348 RP (Portion), 351 RP (Portion), 352 RP (Portion), 353 S.A RP (Portion), 353 S.B RP (Portion), 354 S.A [formerly known as 354 RP (Portion)], 354 RP (Portion), 355 RP (Portion), 356 RP (Portion), 357 RP (Portion), 358 RP (Portion), 359 RP (Portion), 360 S.A RP (Portion), 361 RP, 362 RP (Portion), 368 S.A RP (Portion), 368 RP (Portion), 392 RP, 394 RP (Portion), 396 RP, 397 (Portion), 400 RP (Portion), 402 RP, 403 (Portion), 404 RP, 405 RP, 406 (Portion), 410 (Portion), 1151 RP (Portion), 1152 S.A RP, 1152 S.B RP, 1152 S.C, 1152 S.D RP, 1153 RP, 1154 S.A RP, 1156 (Portion), 1159 RP (Portion), 1160 (Portion), 1162 RP (Portion), 1163 S.A RP, 1163 S.B, 1164 RP, 1167 S.A ss.2, 1167 S.A RP, 1167 S.B RP, 1170 S.A (Portion), 1198 S.E (Portion), 1198 S.G (Portion), 1200 (Portion), 1201 (Portion), 1202 RP, 1203 RP, 1204 S.B RP, 1204 RP, 1205 S.C, 1205 RP, 1206 S.B, 1206 S.C, 1206 RP, 1207 S.A, 1209, 1210 S.C (Portion), 1210 S.E ss.3 S.A, 1210 S.E ss.3 S.B, 1210 S.E ss.3 S.C, 1210 S.E ss.3 RP, 1210 S.E RP, 1210 S.F RP, 1210 S.G, 1210 S.H, 1210 RP (Portion), 1212 (Portion), 1213, 1214 RP, 1215 (Portion), 1216 (Portion), 1217 (Portion), 1218 (Portion), 1219 RP (Portion), 1220 RP (Portion), 1221 RP, 1222 RP, 1223 RP, 1224 S.A (Portion), 1224 RP, 1244 RP (Portion), 1245 RP (Portion), 1358 (Portion), 1363 (Portion), 1364 RP, 1366 (Portion), 1367 RP, 1368 RP (Portion), 1369 S.B (Portion), 1371 RP (Portion), 1372 RP (Portion), 1376 (Portion), 1377 (Portion), 1378 (Portion), 1379 (Portion), 1383 S.A (Portion), 1383 RP (Portion), 1384 S.A (Portion), 1386 (Portion), 1390 RP (Portion), 1393 RP (Portion), 1399 (Portion), 1401 S.A (Portion), 1401 S.B (Portion), 1401 S.C (Portion), 1401 S.D (Portion), 1402 (Portion), 1405 (Portion), 1406 (Portion), 1407 (Portion), 1410 RP

(Portion), 1414 (Portion), 1416 RP (Portion), 1420 RP (Portion), 1421 (Portion), 1429 (Portion), 1430 S.A (Portion), 1431 (Portion), 1433 S.A RP (Portion), 1433 RP (Portion), 1434 RP (Portion), 1438 S.A RP (Portion), 1438 S.B RP (Portion), 1438 S.C RP, 1438 S.D (Portion), 1439 RP (Portion), 1440 S.A (Portion), 1440 S.B (Portion), 1441 RP (Portion), 1442 RP (Portion), 1443 (Portion), 1446 RP (Portion), 1447 S.A (Portion), 1447 S.B (Portion), 1452 (Portion), 1453 (Portion), 1454 (Portion), 1455 RP (Portion), 1456 RP, 1457, 1458 (Portion), 1460 (Portion), 1461 (Portion), 1462 (Portion), 1463 S.A RP, 1463 S.B ss.1 RP, 1464 RP, 1465 RP, 1477 RP (Portion), 1478 (Portion), 1479 (Portion), 1480 (Portion), 1481 (Portion), 1482 RP (Portion), 1483 S.A RP (Portion), 1483 S.B RP (Portion), 1484 S.A RP (Portion), 1487 (Portion), 1488 S.A (Portion), 1488 RP (Portion), 1489 (Portion), 1514 (Portion), 1515 (Portion), 1517 (Portion), 1518 (Portion), 1519 (Portion), 1520 S.A (Portion), 1520 S.B (Portion), 1522 (Portion), 1523 RP (Portion), 1524 RP, 1525 RP (Portion), 1526 RP, 1527 RP, 1530 RP, 1531 S.A, 1531 S.B, 1532 (Portion), 1585 (Portion), 1586 S.A, 1586 S.B, 1587 RP, 1588, 1624 (Portion), 1627 (Portion), 1628 (Portion), 1630 RP (Portion), 1631 S.B ss.1 (Portion), 1631 S.B RP (Portion), 1631 S.C (Portion), 1635 (Portion), 1636, 1638 RP (Portion), 1639 RP, 1640 (Portion), 1641 (Portion), 1642 (Portion), 1653 (Portion), 1654 (Portion), 1655 S.A (Portion), 1655 S.B (Portion), 1655 S.E (Portion), 1656 RP (Portion), 1672 (Portion), 1673 (Portion), 1674 (Portion), 1675 (Portion), 1676 (Portion), 1677 (Portion), 1698 (Portion), 1702 (Portion), 1703 (Portion), 2013, 2014 RP, 2193 and 2194 all in Demarcation District No. 119;

Lots Nos. 2423 RP (Portion), 2428 RP (Portion), 2429 S.B (Portion), 2429 RP (Portion), 2466 RP (Portion), 2468 RP (Portion), 2609 RP (Portion), 2617 RP (Portion), 2620 RP (Portion), 2621 RP, 2623 RP (Portion), 2624 (Portion), 2625 (Portion), 2627 (Portion), 2629 RP (Portion), 2630 RP (Portion), 2632 RP (Portion), 2633 RP (Portion), 2634 RP, 2635 (Portion), 2636 (Portion), 2639 RP (Portion), 2646 (Portion), 2647 RP (Portion), 2684 S.G (Portion), 2684 S.H (Portion), 2684 S.I (Portion), 2684 S.J (Portion), 2684 S.K (Portion), 2684 S.L (Portion), 2684 RP (Portion), 2685 (Portion), 2686 (Portion), 2687 (Portion), 2688 (Portion), 2690 (Portion), 2691 (Portion), 2692 (Portion), 2693 (Portion), 2694 (Portion), 2695 (Portion), 2697 (Portion), 2714 (Portion), 2716 RP (Portion), 2717 RP (Portion) and 2718 RP (Portion) all in Demarcation District No. 120; and

Lots Nos. 264 RP (Portion), 265 (Portion), 266 (Portion), 267 (Portion), 268 RP (Portion), 298 RP (Portion), 299 RP (Portion), 300 RP [formerly known as 300 RP (Portion)], 301 S.A RP, 301 S.B RP (Portion) [formerly known as 301 S.B (Portion)], 302 RP, 337 S.A RP (Portion), 337 S.B RP, 337 S.C RP, 389 RP (Portion), 391 RP, 455 RP (Portion), 470 RP (Portion), 472 RP (Portion) [formerly known as 472 (Portion)], 473 RP (Portion) [formerly known as 473 (Portion)], 474 RP (Portion) [formerly known as 474 (Portion)], 475 RP (Portion) [formerly known as 475 (Portion)], 476 RP (Portion), 477 (Portion), 480 (Portion), 481 RP (Portion), 490 RP (Portion), 491 RP (Portion), 492 RP (Portion), 493 RP (Portion), 494 RP (Portion), 495 RP (Portion), 498 (Portion), 499 RP (Portion) [formerly known as 499 (Portion)], 501 RP (Portion), 507 RP, 508, 510 (Portion), 511, 512, 513 (Portion), 514, 516, 517 (Portion), 518 (Portion), 519 (Portion), 520, 527 S.A (Portion), 534 RP [formerly known as 534 (Portion)], 535 RP [formerly known as 535 (Portion)], 536 RP (Portion) [formerly known as 536 (Portion)], 537 RP (Portion) [formerly known as 537 (Portion)], 538 RP [formerly known as 538 (Portion)], 539 RP [formerly known as 539 (Portion)], 540 RP (Portion) [formerly known as 540 (Portion)], 541 RP (Portion) [formerly known as 541 (Portion)], 542 (Portion), 551 (Portion), 556 RP (Portion) [formerly known as 556 (Portion)], 557 (Portion), 559 RP (Portion) [formerly known as 559 (Portion)], 560 RP (Portion) [formerly known as 560 (Portion)], 561 RP [formerly known as 561 (Portion)], 562 RP [formerly known as 562 (Portion)], 563 RP [formerly known as 563 (Portion)], 564 RP [formerly known as 564 (Portion)], 565, 566, 567, 568 (Portion), 569 (Portion), 570 (Portion), 575 (Portion), 576 RP [formerly known as 576 (Portion)], 577 RP (Portion) [formerly known as 577 (Portion)], 579 RP (Portion) [formerly known as 579 (Portion)], 581 (Portion), 582, 584 (Portion), 585, 586, 587 (Portion), 588 RP (Portion) [formerly known as 588 (Portion)], 598, 599 (Portion), 600 (Portion), 615 (Portion), 616 (Portion), 617 (Portion), 618 (Portion), 619 (Portion), 620, 621 (Portion), 622 (Portion), 626 (Portion), 641, 642, 652 RP (Portion), 653 (Portion), 654 (Portion), 655 RP (Portion), 656 RP (Portion), 657 RP (Portion), 660 RP (Portion), 661 (Portion), 662 RP (Portion), 663 RP, 664 RP (Portion), 665 (Portion), 668 (Portion), 689 RP (Portion), 690 RP (Portion), 691 RP, 693 RP, 694 RP, 695 RP, 696, 697, 698 RP, 699 S.A (Portion), 699 S.B (Portion), 700, 701 (Portion), 702 RP (Portion), 703, 704, 705 RP, 706 RP, 707, 708, 709, 710 (Portion), 712 (Portion), 713 (Portion), 714 (Portion), 732 (Portion), 733 (Portion), 734 S.A RP, 734 S.B (Portion), 734 RP, 735 RP, 736 S.B (Portion), 737 S.B, 742

RP (Portion), 743 RP (Portion), 745 RP, 746, 747 (Portion), 751 (Portion), 753 (Portion), 754 RP (Portion), 755 RP (Portion), 756 RP (Portion), 757 RP, 761 RP (Portion), 858 RP (Portion), 860 (Portion), 866 RP (Portion), 867 S.A RP (Portion), 870 (Portion), 871 RP (Portion), 920 (Portion), 921 RP (Portion), 922 RP (Portion), 926 (Portion), 927 RP, 928 RP, 930 RP (Portion), 931 RP (Portion), 933 RP (Portion), 934 RP (Portion), 935 RP, 936 (Portion), 938 RP (Portion), 939 RP (Portion), 940 RP, 941 (Portion), 943 RP (Portion), 944 RP (Portion), 947 (Portion), 949 RP, 950 RP (Portion), 951 S.A (Portion), 954 (Portion), 955 S.B, 955 RP (Portion), 956 (Portion), 969 (Portion), 970 RP, 971 RP, 972 RP, 973 RP, 975 RP, 976, 977 RP, 978 (Portion), 981 RP (Portion), 982 RP (Portion), 983 RP (Portion), 984 RP (Portion), 991 RP (Portion), 992 RP (Portion), 993 (Portion), 995 RP (Portion), 996 RP (Portion), 997 RP (Portion), 998 RP (Portion), 999 RP (Portion), 1000 RP (Portion), 1001 (Portion), 1104 (Portion), 1105 RP (Portion), 1106 (Portion), 1109 (Portion), 1111 (Portion), 1115 (Portion), 1117 S.C (Portion), 1117 S.C ss.1 (Portion), 1117 S.D (Portion), 1118 (Portion), 1120 (Portion), 1198 RP (Portion), 1199 (Portion), 1200 (Portion), 1201 RP (Portion), 1207 S.C (Portion), 1207 RP (Portion), 1208 S.A RP (Portion), 1208 S.D (Portion), 1208 S.E (Portion), 1208 S.H, 1208 S.J ss.1 RP, 1209 RP (Portion), 1211 RP, 1263 RP, 1265 RP (Portion), 1266 RP (Portion), 1444 RP (Portion), 1462 RP (Portion), 1491 RP (Portion), 1496 RP, 1497, 1498 RP (Portion), 1500 (Portion), 1501 (Portion), 1502, 1503 (Portion), 1504 (Portion), 1511 (Portion), 1512 RP (Portion), 1516 RP (Portion), 1517 RP (Portion), 1521 RP (Portion), 1522 RP, 1523 RP, 1524, 1525, 1526, 1527 RP, 1528 RP, 1529 RP, 1530, 1531, 1532, 1533, 1535 (Portion), 1553 (Portion), 1554 RP (Portion), 1556 RP, 1557 RP (Portion), 1561 RP (Portion), 1621 RP (Portion) [formerly known as 1621 (Portion)], 1622, 1636 (Portion), 1637 S.A (Portion), 1637 S.B (Portion), 1637 S.C (Portion), 1637 S.D (Portion), 1637 S.F (Portion), 1637 RP (Portion), 1640 (Portion), 1641 S.A (Portion), 1641 RP (Portion), 1647 (Portion), 1648 (Portion), 1649 RP (Portion), 1650 RP, 1661 RP (Portion), 1663 RP (Portion), 1664 RP (Portion), 1666 (Portion), 1667 (Portion), 1669 (Portion), 1676 S.A (Portion), 1676 S.B (Portion), 1682 RP, 1829 S.A ss.2 RP (Portion) [formerly known as 1829 S.A ss.2 (Portion)], 1829 S.A ss.3 RP (Portion) [formerly known as 1829 S.A ss.3 (Portion)], 1829 S.A ss.4 (Portion), 1829 S.A ss.5 (Portion), 1829 S.A ss.7 (Portion), 1829 S.A ss.8, 1829 S.A ss.9 RP [formerly known as 1829 S.A ss.9 (Portion)], 1829 S.A ss.10 (Portion), 1829 S.A ss.11 (Portion), 1829 RP (Portion), 1831 RP (Portion), 1842 RP, 2008 S.A ss.1 RP (Portion), 2008 S.B ss.1 RP (Portion), 2008 S.B RP (Portion), 2008 S.C RP (Portion), 2008 S.E RP (Portion), 2008 S.G RP, 2008 S.N RP (Portion), 2008 S.Q RP (Portion) and 2050 all in Demarcation District No. 121

and shown coloured orange on the Resumption Plan No. YLM11021 and Modification Resumption Plans Nos. YLM11265 and YLM11377 annexed to the said order, which land was described in the scheme referred to in Government Notice No. 3284 published on 2 June 2023 and 9 June 2023 and as modified by Government Notice No. 6741 published on 15 November 2024 and 22 November 2024, shall be resumed.

The electronic version of this notice and the aforesaid Resumption Plan and Modification Resumption Plans may be viewed on the Lands Department website (<https://www.landsd.gov.hk/en/resources/gov-notices/acq.html>) under Government Notices after this notice is published in the *Gazette*. A copy of the said order, a copy of this notice, and the aforesaid Resumption Plan and Modification Resumption Plans may be inspected by members of the public, free of charge, at the following offices during the following hours when those offices are normally open to the public:—

<i>Offices</i>	<i>Opening Hours (except on public holidays)</i>
Central and Western Home Affairs Enquiry Centre, Ground Floor, Harbour Building, 38 Pier Road, Central, Hong Kong	Monday to Friday 9.00 a.m. to 7.00 p.m.
Yuen Long Home Affairs Enquiry Centre, Ground Floor, Yuen Long District Office Building, 269 Castle Peak Road, Yuen Long, New Territories	
District Lands Office, Yuen Long, 9th Floor, Yuen Long Government Offices, 2 Kiu Lok Square, Yuen Long, New Territories	Monday to Friday 8.45 a.m. to 12.30 p.m. and 1.30 p.m. to 5.30 p.m.

This notice was affixed on or near the said land on 20 February 2025.

The Deputy Director/Specialist, Lands Department has under section 13(2) of the Ordinance specified a period of notice of THREE MONTHS from the date upon which this notice was affixed on or near the said land.

It is hereby declared that upon expiry of that period at midnight on 20 May 2025, the land described above shall by virtue of section 13(3) of the Ordinance revert to the Government of the Hong Kong Special Administrative Region for the purposes of or incidental to the works or the use described in the said scheme. The date of reversion shall be 21 May 2025.

Any person entitled to compensation under the Ordinance may serve upon the Secretary for Transport and Logistics a written claim, which can be submitted *via* one of the following means, before the expiration of one year from the date of resumption:—

- (1) By post or by hand to the Transport and Logistics Bureau's Drop-in Box No. 6 located at the 2nd Floor Entrance, East Wing, Central Government Offices, 2 Tim Mei Avenue, Tamar, Hong Kong. The box is available for use between 8.00 a.m. and 7.00 p.m. from Monday to Friday (except public holidays);
- (2) By fax to (852) 2868 4643; or
- (3) By email to (gazettetlb@tlb.gov.hk).

Personal Information Collection Statement

Any information, including the personal data, submitted to the Secretary for Transport and Logistics in connection with any written claims under section 29 of the Roads (Works, Use and Compensation) Ordinance (Chapter 370) will be used for the processing of the claims and other related purposes. The provision of the information, including the personal data, as required under section 29 of the Roads (Works, Use and Compensation) Ordinance (Chapter 370) is obligatory. If such information, including the personal data, as required under section 29 of the Roads (Works, Use and Compensation) Ordinance (Chapter 370) is not provided as requested, the claims may be rejected. Any information, including the personal data, so submitted may be disclosed to the relevant government departments and other organizations or agencies which are required to handle the claims and related matters. Persons who have so submitted their personal data have the rights to request access to and correction of their personal data in relation to their claims. Request for access to or correction of the personal data should be made in writing to the Personal Data Privacy Officer of the Transport and Logistics Bureau at 20th Floor, East Wing, Central Government Offices, 2 Tim Mei Avenue, Tamar, Hong Kong.

20 February 2025

Vivianne TSE *Chief Estate Surveyor/New Development Area*

Land Resumption Notice (G.N. 1060) dated 20.02.2025

G.N. 1060

LANDS DEPARTMENT

**LANDS RESUMPTION ORDINANCE (Chapter 124)
(Notice under section 4)**

**RESUMPTION OF LAND FOR
YUEN LONG SOUTH DEVELOPMENT—
SECOND PHASE DEVELOPMENT (FIRST BATCH)**

To the owners and every person interested or having any right or easement in all those pieces or parcels of land in the New Territories more particularly described below and shown coloured orange on the Resumption Plan No. YLM11535:—

Lots Nos. 692 S.A (Portion), 692 S.B, 695, 696 S.A (Portion), 696 RP (Portion), 698 (Portion), 699 S.E (Portion), 703 S.A (Portion), 703 S.B ss.2 S.A (Portion), 703 S.B ss.3 S.A (Portion), 720 RP (Portion), 726 (Portion), 727, 728 (Portion), 729 (Portion), 730, 731 S.A, 731 RP, 732, 733, 734, 735, 736 (Portion), 737 RP (Portion), 738 S.C (Portion), 738 RP (Portion), 742 RP (Portion), 743 RP (Portion), 744 S.A, 744 S.B, 745, 746, 747, 748 (Portion), 749 (Portion), 750, 751, 752, 753 (Portion), 754 (Portion), 755 (Portion), 756 (Portion), 757 (Portion), 762 (Portion), 780 S.A (Portion), 781 (Portion), 782 RP (Portion), 783 (Portion), 791 (Portion), 792 (Portion), 795 (Portion), 796 (Portion), 797 (Portion), 798 (Portion), 799 RP (Portion), 800 RP (Portion), 801 RP (Portion), 802 RP (Portion), 803 RP (Portion), 806 RP (Portion), 1877 (Portion), 1878 (Portion), 1879(A) (Portion), 1879(B) (Portion), 1881 (Portion), 1882 (Portion), 1883 (Portion), 1884 (Portion), 1885 (Portion), 1887 (Portion), 1888, 1889 (Portion), 1890 RP (Portion) and 1891 (Portion) all in Demarcation District No. 117;

Lots Nos. 313 (Portion), 314 RP (Portion), 315 (Portion), 316 (Portion), 317 (Portion), 318, 319 (Portion), 320 (Portion), 321, 322 S.A (Portion), 322 S.B, 323, 324 (Portion), 325 (Portion), 326 (Portion), 327 S.A (Portion), 327 S.A ss.1 (Portion), 327 S.B (Portion), 327 S.B ss.1, 327 S.C (Portion), 327 S.D, 327 S.E RP (Portion), 328 (Portion), 329 S.A ss.1, 329 S.A ss.2, 329 S.A ss.3, 329 S.A ss.4, 329 S.A RP, 329 RP (Portion), 330 (Portion), 331 RP, 332 S.E, 332 RP, 333, 334 (Portion), 335, 336, 337 RP (Portion), 338 RP (Portion), 341 (Portion), 342 RP (Portion), 343, 344, 345 (Portion), 346 S.A (Portion), 346 S.B, 347 RP (Portion), 348 RP (Portion), 351 RP (Portion), 352 RP (Portion), 353 S.A RP (Portion), 353 S.B RP (Portion), 354 RP (Portion), 355 RP (Portion), 356 RP (Portion), 357 RP (Portion), 358 RP (Portion), 359 RP (Portion), 360 S.A RP (Portion), 362 RP (Portion), 368 S.A RP (Portion), 368 RP (Portion), 1040, 1041, 1042, 1043, 1044, 1045 S.A ss.1, 1045 S.A RP, 1045 S.B, 1046, 1047, 1049, 1050, 1051, 1052, 1053, 1054, 1055, 1056, 1057, 1058 (Portion), 1059, 1060, 1061 (Portion), 1062 (Portion), 1063, 1064, 1065, 1066, 1067, 1068, 1069, 1070, 1071, 1072, 1073, 1074, 1075, 1076, 1077, 1078, 1079, 1080, 1081, 1082, 1083, 1084, 1085, 1086, 1087, 1088, 1089, 1090, 1091, 1102, 1103, 1104, 1105, 1106, 1109, 1110, 1111, 1112, 1113, 1114, 1115, 1116, 1117, 1118 S.A, 1118 S.B (Portion), 1118 S.C, 1118 S.D, 1119, 1120, 1121 (Portion), 1122 S.A (Portion), 1122 S.B (Portion), 1122 S.C, 1123, 1125 (Portion), 1126, 1127, 1128 (Portion), 1129 S.A (Portion), 1130 (Portion), 1131 (Portion), 1132 (Portion), 1133 (Portion), 1134 S.A, 1134 RP, 1135, 1136, 1137, 1139, 1140, 1141, 1142, 1143, 1144, 1145, 1146, 1147, 1148, 1149 S.A, 1149 RP, 1150 S.A, 1150 RP, 1368 RP (Portion), 1369 S.A, 1369 S.B (Portion), 1369 S.C, 1369 S.D, 1369 S.E, 1370, 1371 RP (Portion), 1372 RP (Portion), 1373, 1374, 1375, 1376 (Portion), 1377 (Portion), 1378 (Portion), 1379 (Portion), 1380, 1381, 1382, 1383 S.A (Portion), 1383 RP (Portion), 1384 S.A (Portion), 1384 S.B, 1385, 1386 (Portion), 1387, 1388, 1389, 1390 RP (Portion), 1393 RP (Portion), 1394, 1395, 1396, 1397, 1398, 1399 (Portion), 1400, 1401 S.A (Portion), 1401 S.B (Portion), 1401 S.C (Portion), 1401 S.D (Portion), 1402 (Portion), 1403, 1404, 1405 (Portion), 1406 (Portion), 1407 (Portion), 1408, 1409, 1410 RP (Portion), 1414 (Portion), 1415 RP, 1416 RP (Portion), 1420 RP (Portion), 1421 (Portion), 1422, 1423, 1424, 1425, 1426, 1427, 1428 S.A, 1428 RP, 1429 (Portion), 1430 S.A (Portion), 1430 RP, 1431 (Portion), 1433 S.A RP (Portion), 1433 RP (Portion), 1434 RP (Portion), 1438 S.A RP (Portion), 1438 S.B RP (Portion), 1438 S.D (Portion), 1438 S.E RP, 1439 RP (Portion), 1440 S.A (Portion), 1440 S.B (Portion), 1441 RP (Portion), 1442 RP (Portion), 1443 (Portion), 1444, 1445, 1446 RP (Portion), 1447 S.A (Portion), 1447 S.B (Portion), 1448, 1449, 1450, 1451 S.A, 1451 RP, 1452 (Portion), 1453 (Portion), 1454 (Portion), 1455 RP (Portion), 1458 (Portion), 1459, 1460 (Portion), 1461 (Portion), 1462 (Portion), 1471 (Portion), 1472 S.A, 1472 S.B, 1474 RP, 1475 RP, 1476, 1477 RP (Portion), 1478 (Portion), 1479 (Portion), 1480 (Portion), 1481 (Portion), 1482 RP (Portion), 1483 S.A

RP (Portion), 1483 S.B RP (Portion), 1484 S.A RP (Portion), 1484 S.B, 1485, 1486 RP, 1487 (Portion), 1488 S.A (Portion), 1488 RP (Portion), 1489 (Portion), 1490 RP, 1492, 1493 S.A, 1493 S.B, 1493 RP, 1494 S.A, 1494 RP, 1495, 1496 S.A RP, 1496 S.B, 1496 S.C, 1496 S.D RP, 1498 RP, 1499, 1500 RP, 1502 RP (Portion), 1503 RP, 1504 S.B, 1504 S.C RP, 1504 RP, 1505, 1506, 1507 S.F, 1508 RP, 1510 RP, 1511, 1512, 1513, 1514 (Portion), 1515 (Portion), 1516, 1517 (Portion), 1518 (Portion), 1519 (Portion), 1520 S.A (Portion), 1520 S.B (Portion), 1521, 1522 (Portion), 1523 RP (Portion), 1525 RP (Portion), 1591, 1592, 1593, 1594, 1595, 1596, 1597, 1598, 1599 RP, 1606 RP, 1607 RP (Portion), 1613 S.C, 1614 RP (Portion), 1615 S.B RP, 1615 RP, 1616, 1617 (Portion), 1618, 1619, 1620, 1621 RP, 1623 RP, 1624 (Portion), 1625 S.A ss.2, 1625 S.B ss.2, 1626 S.A, 1626 RP, 1627 (Portion), 1628 (Portion), 1629 S.B, 1630 S.A, 1630 RP (Portion), 1631 S.A RP, 1631 S.B ss.1 (Portion), 1631 S.B RP (Portion), 1631 S.C (Portion), 1631 S.D, 1634 (Portion), 1635 (Portion), 1641 (Portion), 1642 (Portion), 1653 (Portion), 1654 (Portion), 1655 S.A (Portion), 1655 S.B (Portion), 1655 S.C, 1655 S.D, 1655 S.E (Portion), 1655 RP (Portion), 1656 RP (Portion), 1658 RP, 1659 RP (Portion), 1662 RP (Portion), 1667, 1668, 1669, 1670 S.A, 1670 S.B, 1670 S.C, 1670 S.D (Portion), 1670 S.E, 1671, 1672 (Portion), 1673 (Portion), 1674 (Portion), 1675 (Portion), 1676 (Portion), 1677 (Portion), 1695 (Portion), 1698 (Portion), 1701 (Portion), 1702 (Portion), 1703 (Portion), 1704, 1705 S.A (Portion) and 1705 S.B ss.1 (Portion) all in Demarcation District No. 119;

Lots Nos. 2423 RP (Portion), 2426 RP, 2427, 2428 RP (Portion), 2429 S.A, 2429 S.B (Portion), 2429 S.C, 2429 S.D, 2429 RP (Portion), 2430, 2431, 2432, 2433, 2434, 2437 S.B RP, 2620 RP (Portion), 2623 RP (Portion), 2629 RP (Portion), 2630 RP (Portion), 2632 RP (Portion), 2633 RP (Portion), 2635 (Portion), 2636 (Portion), 2639 RP (Portion), 2684 S.D, 2684 S.E, 2684 S.F, 2684 S.G (Portion), 2684 S.H (Portion), 2684 S.I (Portion), 2684 S.J (Portion), 2684 S.K (Portion), 2684 S.L (Portion), 2684 S.M, 2684 S.N, 2684 S.O, 2684 RP (Portion), 2685 (Portion), 2686 (Portion), 2687 (Portion), 2688 (Portion), 2689, 2690 (Portion), 2691 (Portion), 2692 (Portion), 2693 (Portion), 2694 (Portion), 2695 (Portion), 2696, 2697 (Portion), 2698 S.A, 2698 S.B, 2699, 2700, 2701, 2702, 2703, 2704 S.A, 2704 S.B, 2705, 2706, 2707, 2708, 2709, 2710, 2711, 2712 S.A, 2712 S.B, 2713, 2714 (Portion), 2716 RP (Portion), 2717 RP (Portion) and 2718 RP (Portion) all in Demarcation District No. 120; and

Lots Nos. 298 RP (Portion), 299 RP (Portion), 301 S.B RP (Portion) [formerly known as 301 S.B (Portion)], 470 RP (Portion), 510 (Portion), 522 S.A, 525 S.A, 526 S.A, 527 S.A (Portion), 549 S.B, 1092 S.B ss.9 RP (Portion), 1103 (Portion), 1104 (Portion), 1105 RP (Portion), 1109 (Portion), 1111 (Portion), 1112 (Portion), 1113, 1115 (Portion), 1117 S.B (Portion), 1117 S.C (Portion), 1117 S.C ss.1 (Portion), 1117 S.D (Portion), 1118 (Portion), 1120 (Portion), 1145 S.C, 1145 S.E RP, 1145 S.F RP, 1145 S.O RP, 1145 S.P RP, 1145 S.Q ss.2, 1145 S.Q RP, 1145 S.V ss.3, 1145 S.V RP (Portion), 1190, 1192, 1193, 1194, 1195, 1196, 1197 S.A, 1197 S.B, 1198 RP (Portion), 1199 (Portion), 1200 (Portion), 1201 RP (Portion), 1202 RP (Portion), 1203 S.A RP (Portion), 1203 RP (Portion), 1204 RP (Portion), 1207 RP (Portion), 1208 S.A RP (Portion), 1208 S.D (Portion), 1208 S.E (Portion), 1209 RP (Portion), 1265 RP (Portion), 1266 RP (Portion), 1445 RP, 1447 RP, 1557 RP (Portion), 1561 RP (Portion), 1633 RP (Portion), 1636 (Portion), 1637 S.A (Portion), 1637 S.B (Portion), 1637 S.C (Portion), 1637 S.D (Portion), 1637 S.E, 1637 S.F (Portion), 1637 RP (Portion), 1638, 1639, 1640 (Portion), 1641 S.A (Portion), 1641 S.H, 1641 S.I, 1641 S.J, 1641 S.K, 1641 S.L, 1641 S.M, 1641 RP (Portion), 1649 RP (Portion), 1661 RP (Portion), 1663 RP (Portion), 1664 RP (Portion), 1665, 1666 (Portion), 1667 (Portion), 1668, 1669 (Portion), 1671, 1672, 1673, 1674, 1675, 1676 S.A (Portion), 1676 S.B (Portion), 1793 RP, 1816, 1820, 1829 S.A ss.3 RP (Portion) [formerly known as 1829 S.A ss.3 (Portion)], 1831 RP (Portion), 1842 S.F RP (Portion), 1874 (Portion), 1875 S.A (Portion), 2008 S.A ss.1 RP (Portion), 2008 S.B ss.1 RP (Portion), 2008 S.B RP (Portion), 2008 S.J RP (Portion), 2008 S.N RP (Portion) and 2008 S.Q RP (Portion) all in Demarcation District No. 121.

TAKE NOTICE that the Chief Executive in Council has decided that the above-mentioned land is required for a public purpose, and under powers delegated by the Chief Executive of the Hong Kong Special Administrative Region, I have made an order that the above-mentioned land shall be resumed and revert to the Government of the Hong Kong Special Administrative Region on the expiration of THREE MONTHS from the date of the affixing of this notice to the said land.

This notice was affixed to the above-mentioned land on 20 February 2025. Upon expiration of the notice period at midnight on 20 May 2025, the above-mentioned land shall revert to the Government of the Hong Kong Special Administrative Region. The date of reversion shall be 21 May 2025.

The electronic version of this notice and the aforesaid Resumption Plan may be viewed on the Lands Department website (<https://www.landsd.gov.hk/en/resources/gov-notices/acq.html>) under Government Notices after this notice is published in the *Gazette*. A copy of this notice and the aforesaid Resumption Plan may be inspected by members of the public, free of charge, at the following offices during the following hours when those offices are normally open to the public:—

<i>Offices</i>	<i>Opening Hours (except on public holidays)</i>
Central and Western Home Affairs Enquiry Centre, Ground Floor, Harbour Building, 38 Pier Road, Central, Hong Kong	Monday to Friday 9.00 a.m. to 7.00 p.m.
Yuen Long Home Affairs Enquiry Centre, Ground Floor, Yuen Long District Office Building, 269 Castle Peak Road, Yuen Long, New Territories	
District Lands Office, Yuen Long, 9th Floor, Yuen Long Government Offices, 2 Kiu Lok Square, Yuen Long, New Territories	Monday to Friday 8.45 a.m. to 12.30 p.m. and 1.30 p.m. to 5.30 p.m.

20 February 2025

CHIU Lee-lee, Lily *Deputy Director/Specialist, Lands Department*

Letter from Lands Department to the applicant regarding YLS NDA land resumption

電話 Tel: 3590 3040
圖文傳真 Fax: 3565 4270
電郵地址 Email: lep18@landsd.gov.hk
本署檔號 Our Ref: () in LD NDA/YLS/BUT/SPDQ3/172
來函檔號 Your Ref:

來函請註明本署檔案
Please quote our reference in your reply



地政總署
新發展區組
NEW DEVELOPMENT AREA SECTION
LANDS DEPARTMENT

我們矢志努力不懈，提供盡善盡美的土地行政服務。
We strive to achieve excellence in land administration.

新界上水龍琛路39號上水廣場15樓1501至1510室
Units 1501-10, Level 15, Landmark North,
39 Lung Sum Avenue, Sheung Shui, New Territories.

網址 Website: www.landso.gov.hk

新界元朗

現場派遞及郵遞

森林發展建設有限公司
(經辦人:)

張先生:

DD11/PLG/1523

元朗南第二期發展

露天／戶外業務清拆編號: Y11/1051-1055

本署曾於2023年1月30日致函貴公司，但至今仍未收到貴公司進一步回覆或只遞交部份相關文件。如貴公司已遞交所有相關文件，則無須理會本信。

現特此致函再次要求貴公司提供相關文件以茲證明貴公司營運的業務地點的營運年期。為使本署能適時處理審核有關貴公司可獲露天／戶外業務經營者的特惠津貼資格之工作，請貴公司於2024年4月10日或之前向本辦事處提供下列文件的副本（如適用），以便評核貴公司是否符合資格申領特惠津貼。

- (1) (a) 經營人之香港身份證 (b) 合夥人之香港身份證
(c) 香港公司註冊證書
- (2) 有關業務在清拆前登記日（即2020年7月10日）前2年的營運單據：
 - (a) 報稅單或繳稅單 (b) 營業損益表
 - (c) 火險保單單據 (d) 僱員保險單據
 - (e) 器材保養單據 (f) 商業登記證
 - (g) 供電單據 (h) 電話單據
 - (i) 供水單據 (j) 資訊服務單據
- (3) 其他有效證明文件

本處將於稍後時間再與貴公司聯絡以便查閱上述文件的正本。如有需要，本處可能要求貴公司提供一切其他所需資料及文件。倘若本署在上述限期屆滿前仍未收到相關之證明文件，本署將不能繼續處理貴公司的資格審核工作。

如貴公司對此事有任何查詢，請於辦公時間內致電本署新發展區組區先生（電話：3596 3431）或與本信代行人聯絡。

地政總署
總產業測量師／新發展區

(謝佩杏  代行)

副本送：
地政總署新發展區組清拆小組（經辦人：朱耀明先生）

2024年3月27日

Memorandum of Understanding between the affected business operator and the applicant

規劃申請意向書

受發展區發展影響的在地經營業務搬遷 - 規劃申請

業務經營者 (甲方)	:	森林發展建設有限公司 Forest Development & Construction Company Limited
公司註冊證明書 / 商業登記證號碼	:	1935040
規劃申請的申請人 (乙方)	:	成利工程有限公司 Surplus Success Engineering Limited
公司註冊證明書 / 商業登記證號碼	:	2639425

甲方 為位於元朗厦村丈量約份第 119 約地段第 1523 號餘段 (部分) 的業務經營者，由於受到政府的元朗南發展之收地計劃影響，需要覓地搬遷重置以繼續經營。

甲方 初步與 乙方 達成共識，同意 乙方 作為規劃申請的申請人，並根據《城市規劃條例》第 16 條，向城市規劃委員會提交規劃申請，於丈量約份第 118 約地段第 1594 號 (部分) (確實地段待定) 作「擬議臨時貨倉 (危險品倉庫除外) 連附屬設施及相關填土工程 (為期 3 年)」。

乙方 作為規劃申請的申請人，受 甲方 委託處理有關搬遷業務事宜。於取得城市規劃委員會之規劃許可後，甲方 將會是申請場地的業務經營者。

備注：上述地段將因應規劃許可的需要而有所修訂。



森林發展建設有限公司 (甲方)
業務經營者簽署



成利工程有限公司 (乙方)
規劃許可申請人簽署

2025 年 10 月 28 日

Appendix II

Details of Alternative Sites for Relocation

Appendix II - Alternative Sites for the Relocation of the Applicant's Original Premises

Alternative Site / Application Site	Site 1	Site 2	Site 3	Site 4	Site 5	Application Site
Location	Various Lots in D.D. 89, Sha Ling, Man Kam To, New Territories	Various Lots in D.D. 80, Lin Ma Hang, New Territories	Lot 1573 (Part) in D.D. 130, Lam Tei, Tuen Mun, New Territories	Various Lots in D.D. 135, Pak Nai, Yuen Long, New Territories	Various Lots in D.D. 104, Ngau Tam Mei, Yuen Long, New Territories	Lot 1594 (Part) in D.D. 118, Tai Tong, Yuen Long, New Territories
Site Area	3,678 m ² (about)	24,446 m ² (about)	1,560 m ² (about)	13,320 m ² (about)	2,900 m ² (about)	864 m ² (about)
Accessibility	Accessible from Kong Nga Po Road via a local access	Accessible from Lin Ma Hang Road via a local access	Accessible from Mak Yuen Wai Road via a local access	Accessible from Nim Wan Road via a local access	Accessible from Ngau Tam Mei Road via a local access	Accessible from Tai Shu Ha Road West via a local access
Distance from Original Premises	15.4 km (about)	20.0 km (about)	4.26 km (about)	6.12 km (about)	7.24 km (about)	2.31 km (about)
Outline Zoning Plan	Approved Fu Tei Au and Sha Ling OZP No. S/NE-FTA/18	Approved Ta Kwu Ling North OZP No. S/NE-TKLN/2	Approved Lam Tei and Yick Yuen OZP No. S/TM-LTY/12	Approved Sheung Pak Nai and Ha Pak Nai OZP No. S/YL-PN/9	Approved Ngau Tam Mei OZP No.: S/YL-NTM/14	Approved Tai Tong OZP No. S/YL-TT/20
Zoning	"Agriculture" ("AGR")	"Recreation" ("REC")	"Green Belt" ("GB")	"Coastal Protection Area" ("CPA")	"Green Belt" ("GB")	"Agriculture" ("AGR")
Existing Condition	Covered with vegetation and tree groups	Mostly vacant and partially hard-paved	Mostly vegetated	Occupied by fishpond and temporary structures	Covered with tree groups and vegetation	Generally flat and vacant, partially covered with vegetation
Surrounding Area	Surrounded by tree groups, open storage yard and structures for residential use	Surrounded by vacant land, woodland, public roads, temporary structures and village houses	Surrounded by woodland, public roads, temporary structures and village houses	Surrounded by fishpond and some temporary structures	Surrounded by ponds, agricultural land and temporary structures for residential use	Surrounded by vacant land covered with vegetation and temporary structures
Suitability for Relocation	<u>Not suitable</u> for relocation: <ul style="list-style-type: none"> - Tree felling is required - Not compatible with the surrounding area - Relatively distanced from original premises - Remote Location 	<u>Not suitable</u> for relocation <ul style="list-style-type: none"> - Much larger than the original premises - Remote location - Not compatible with the surrounding area 	<u>Not suitable</u> for relocation <ul style="list-style-type: none"> - Falls within the "GB" zone - Remote location - Not compatible with the surrounding area - Dense residential structures in the vicinity 	<u>Not suitable</u> for relocation: <ul style="list-style-type: none"> - Falls within the "CPA" zone - Pond filling is required - Narrow roads nearby, unfriendly for larger vehicles - Remote location 	<u>Not suitable</u> for relocation <ul style="list-style-type: none"> - Tree felling is required - Active agricultural activities found - Not compatible with the surrounding area 	<u>Suitable</u> for relocation: <ul style="list-style-type: none"> - Easily accessible from public road - Relatively flat and vacant - No active agricultural activities - In close proximity from the original premises