

Proposed Temporary Shop and Services (Shop for Selling Building Materials) for a Period of 3 Years
at
Lots 2536 (Part) & 2537 (Part) in D.D. 124, Hung Shui Kiu, Yuen Long, N.T.

Annex 1 Estimated Traffic Generation

- 1.1 The application site is served by a vehicular track leading from Hung Shun Road. Having mentioned that the site is intended for shop and services (shop for selling building materials) in only 462m², traffic generated by the proposed development is extremely insignificant.
- 1.2 In view of that the loading/unloading of building materials will be infrequent and short-lived, the proposed loading/unloading bay to serve the proposed use would be sufficient.
- 1.3 The estimated average traffic generation and traffic generation rate at peak hours are as follow:

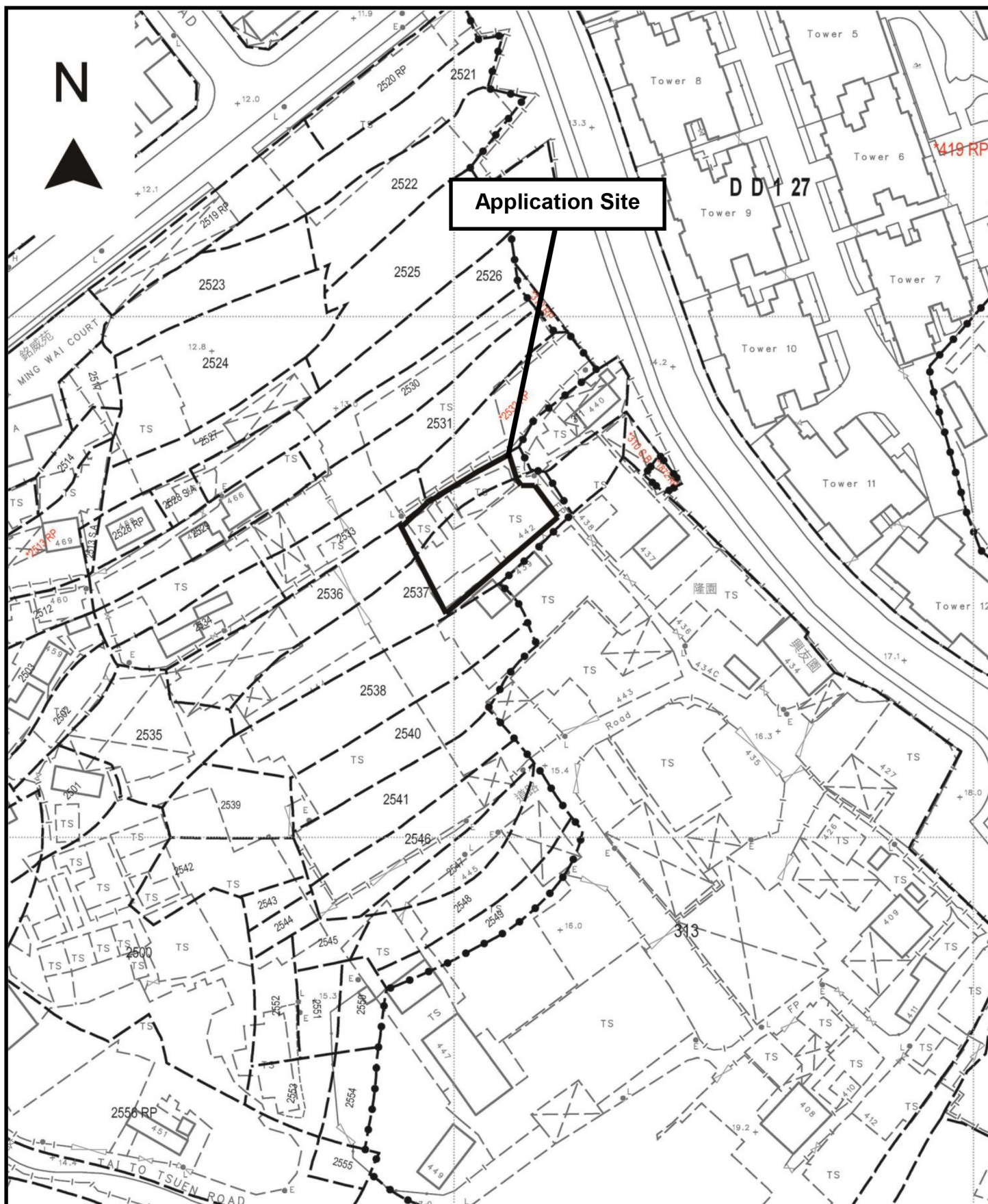
Type of Vehicle	<u>Average Traffic Generation Rate</u> (pcu/hr)	<u>Average Traffic Attraction Rate</u> (pcu/hr)	<u>Traffic Generation Rate at Peak Hours</u> (pcu/hr)	<u>Traffic Attraction Rate at Peak Hours</u> (pcu/hr)
Light goods vehicle	0.15	0.15	0	0
Private car	0.2	0.2	1	1
Total	0.35	0.35	1	1

Note 1: The opening hour of the proposed development is restricted to 9:00 a.m. to 7:00 p.m. from Mondays to Sundays including public holidays.

Note 2: The pcu of private car and light goods vehicle is taken as 1 and 1.5 respectively.

Note 3: Morning peak is defined as 7:00a.m. to 9:00a.m. whereas afternoon peak is defined as 5:00p.m. to 7:00p.m.

- 1.4 As shown in the above estimation, it is estimated that the proposed development would not generate significant amount of traffic. It would not affect the traffic condition of Hung Shun Road.



Project 項目名稱:

Proposed Temporary Shop and Services (Shop for Selling Building Materials) for a Period of 3 Years at Lots 2536 (Part), & 2537 (Part) in D.D. 124, Hung Shui Kiu, Yuen Long, N.T.

Drawing Title 圖目:

Site Plan

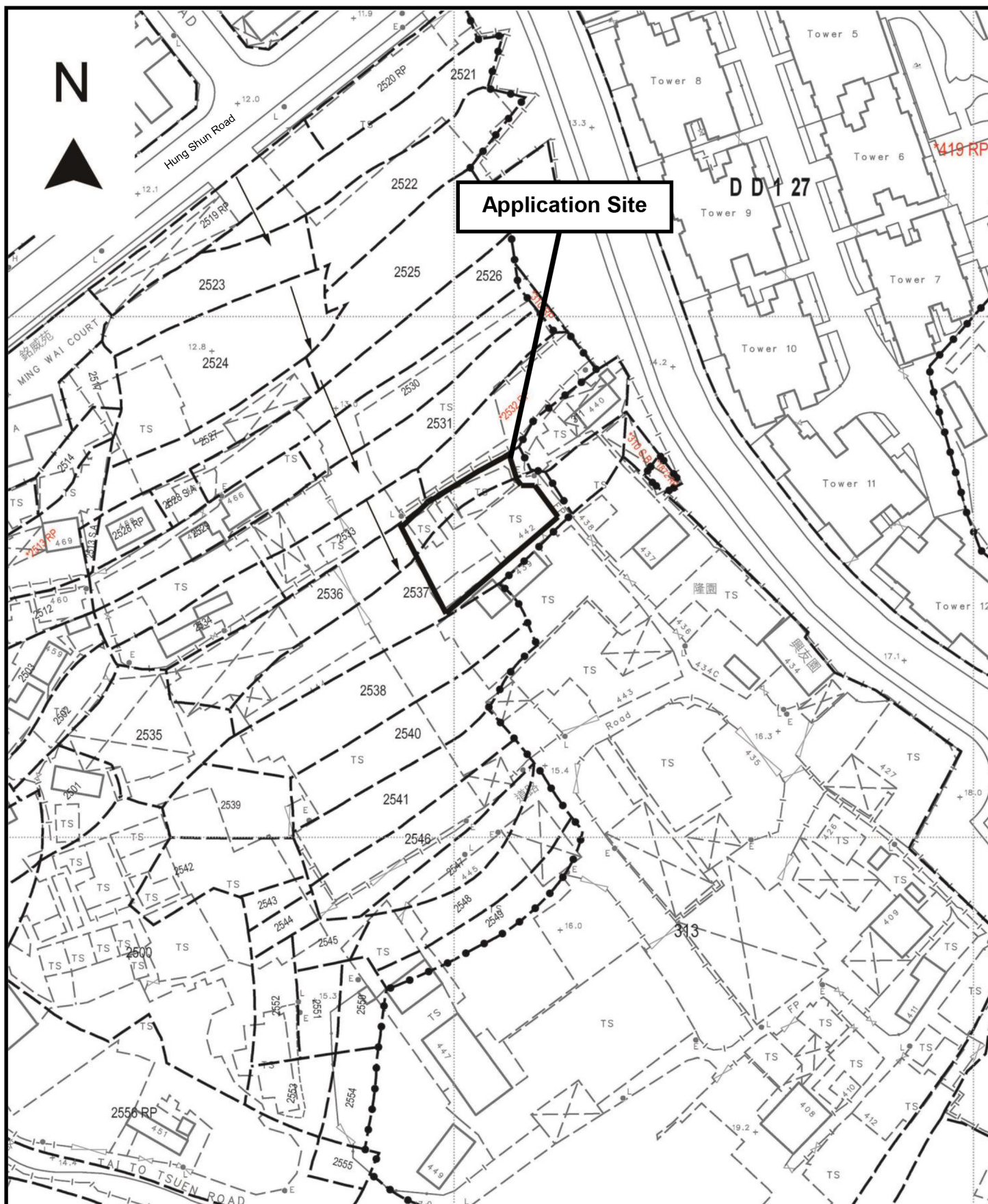
Drawing No. 圖號:

Figure 1

Remarks 備註:

Scale 比例:

1:1000



Project 項目名稱:

Proposed Temporary Shop and Services (Shop for Selling Building Materials) for a Period of 3 Years at Lots 2536 (Part), & 2537 (Part) in D.D. 124, Hung Shui Kiu, Yuen Long, N.T.

Drawing Title 圖目:

Vehicular Access Plan

Drawing No. 圖號:

Figure 2

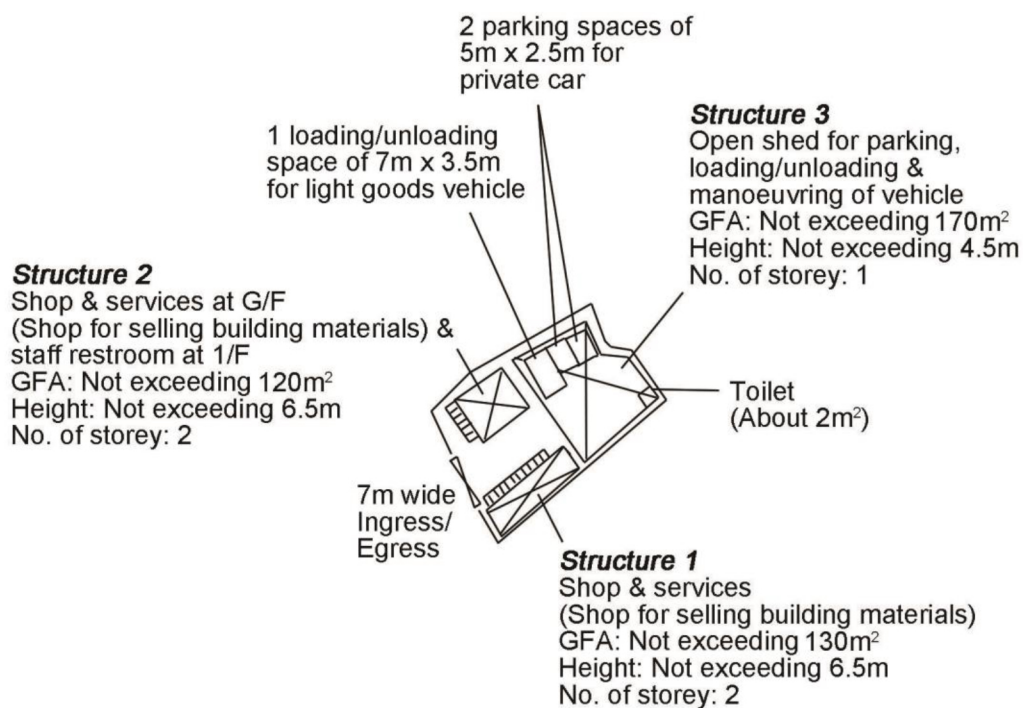
Remarks 備註:

→ Vehicular access leading from Hung Shun Road

Scale 比例:

1:1000

N



Project 項目名稱:

Proposed Temporary Shop and Services (Shop for Selling Building Materials) for a Period of 3 Years at Lots 2536 (Part), & 2537 (Part) in D.D. 124, Hung Shui Kiu, Yuen Long, N.T.

Drawing Title 圖目:

Proposed Layout Plan

Drawing No. 圖號:

Figure 3

Remarks 備註:

Scale 比例:

1:1000

GEO Technical Guidance Note No. 43 (TGN 43)
Guidelines on Hydraulic Design of U-shaped and Half-round Channels on Slopes

Issue No.: 1 Revision: - Date: 05.06.2014 Page: 3 of 3

Figure 1 - Chart for the rapid design of U-shaped and half-round channels up to 600 mm

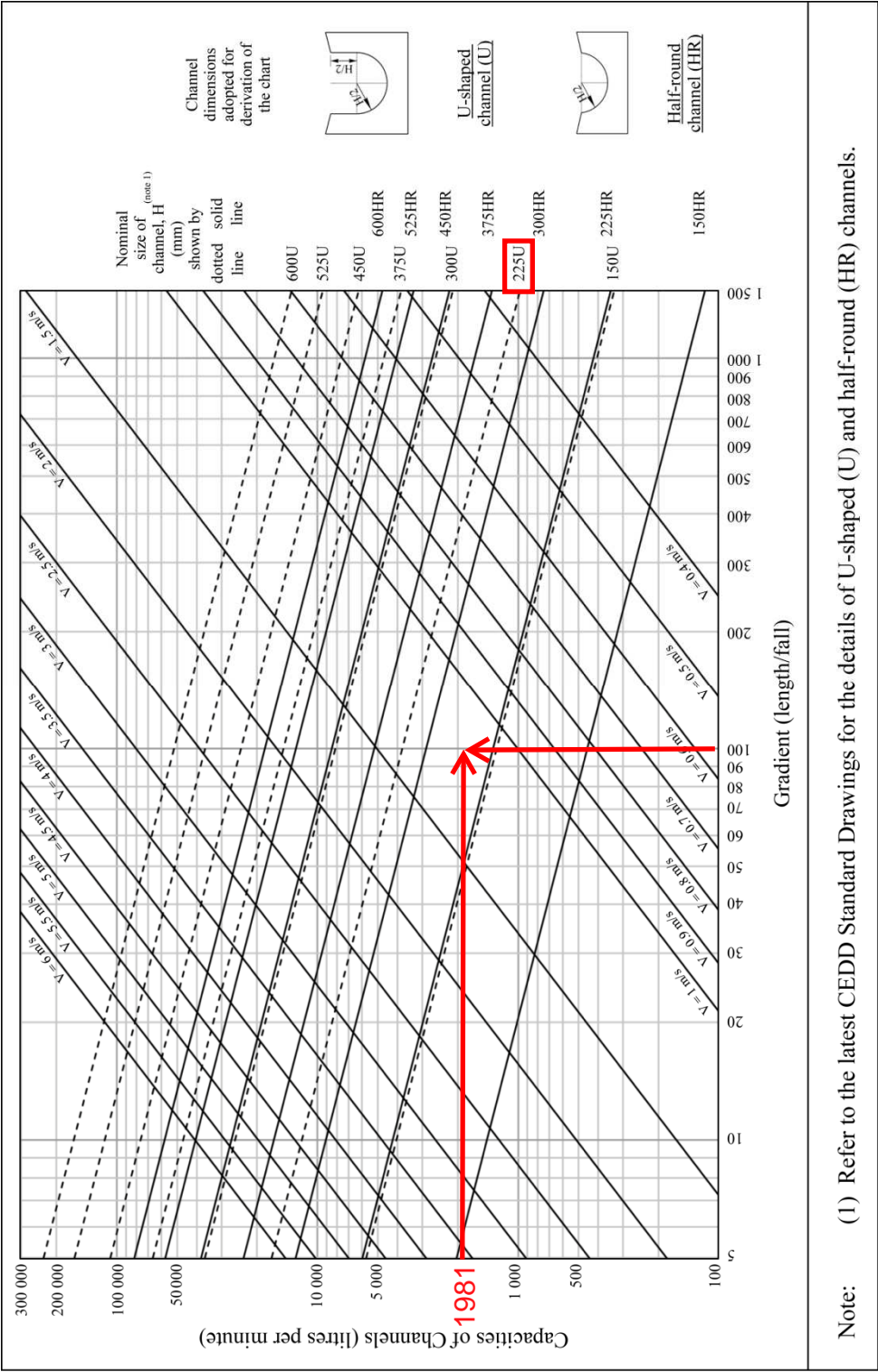


Photo 1

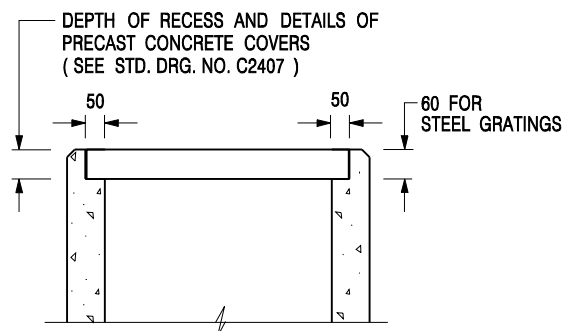


Photo 2



Photo 3





ALTERNATIVE TOP SECTION FOR PRECAST CONCRETE COVERS / GRATINGS

NOTES:

1. ALL DIMENSIONS ARE IN MILLIMETRES.
2. ALL CONCRETE SHALL BE GRADE 20 /20.
3. CONCRETE SURFACE FINISH SHALL BE CLASS U2 OR F2 AS APPROPRIATE.
4. FOR DETAILS OF JOINT, REFER TO STD. DRG. NO. C2413.
5. CONCRETE TO BE COLOURED AS SPECIFIED.
6. UNLESS REQUESTED BY THE MAINTENANCE PARTY AND AS DIRECTED BY THE ENGINEER, CATCHPIT WITH TRAP IS NORMALLY NOT PREFERRED DUE TO PONDING PROBLEM.
7. UPON THE REQUEST FROM MAINTENANCE PARTY, DRAIN PIPES AT CATCHPIT BASE CAN BE USED BUT THIS IS FOR CATCHPITS LOCATED AT SLOPE TOE ONLY AND AS DIRECTED BY THE ENGINEER.
8. FOR CATCHPITS CONSTRUCTED ON OR ADJACENT TO A FOOTPATH, STEEL GRATINGS (SEE DETAIL 'A' ON STD. DRG. NO. C2405) OR CONCRETE COVERS (SEE STD. DRG. NO. C2407) SHALL BE PROVIDED AS DIRECTED BY THE ENGINEER.
9. IF INSTRUCTED BY THE ENGINEER, HANDRAILING (SEE DETAIL 'G' ON STD. DRG. NO. C2405; EXCEPT ON THE UPSLOPE SIDE) IN LIEU OF STEEL GRATINGS OR CONCRETE COVERS CAN BE ACCEPTED AS AN ALTERNATIVE SAFETY MEASURE FOR CATCHPITS NOT ON A FOOTPATH NOR ADJACENT TO IT. TOP OF THE HANDRAILING SHALL BE 1 000 mm MIN. MEASURED FROM THE ADJACENT GROUND LEVEL.
10. MINIMUM INTERNAL CATCHPIT WIDTH SHALL BE 1 000 mm FOR CATCHPITS WITH A HEIGHT EXCEEDING 1 000 mm MEASURED FROM THE INVERT LEVEL TO THE ADJACENT GROUND LEVEL. AND, STEP IRONS (SEE DSD STD. DRG. NO. DS1043) AT 300 c/c STAGGERED SHALL BE PROVIDED. THICKNESS OF CATCHPIT WALL FOR INSTALLATION OF STEP IRONS SHALL BE INCREASED TO 150 mm.
11. FOR RETROFITTING AN EXISTING CATCHPIT WITH STEEL GRATING, SEE DETAIL 'F' ON STD. DRG. NO. C2405.
12. SUBJECT TO THE APPROVAL OF THE ENGINEER, OTHER MATERIALS CAN ALSO BE USED AS COVERS / GRATINGS.

-	FORMER DRG. NO. C2406J.	Original Signed	03.2015
REF.	REVISION	SIGNATURE	DATE

**CATCHPIT WITH TRAP
(SHEET 2 OF 2)**



**CIVIL ENGINEERING AND
DEVELOPMENT DEPARTMENT**

SCALE 1 : 20

DATE JAN 1991

DRAWING NO.

C2406 /2

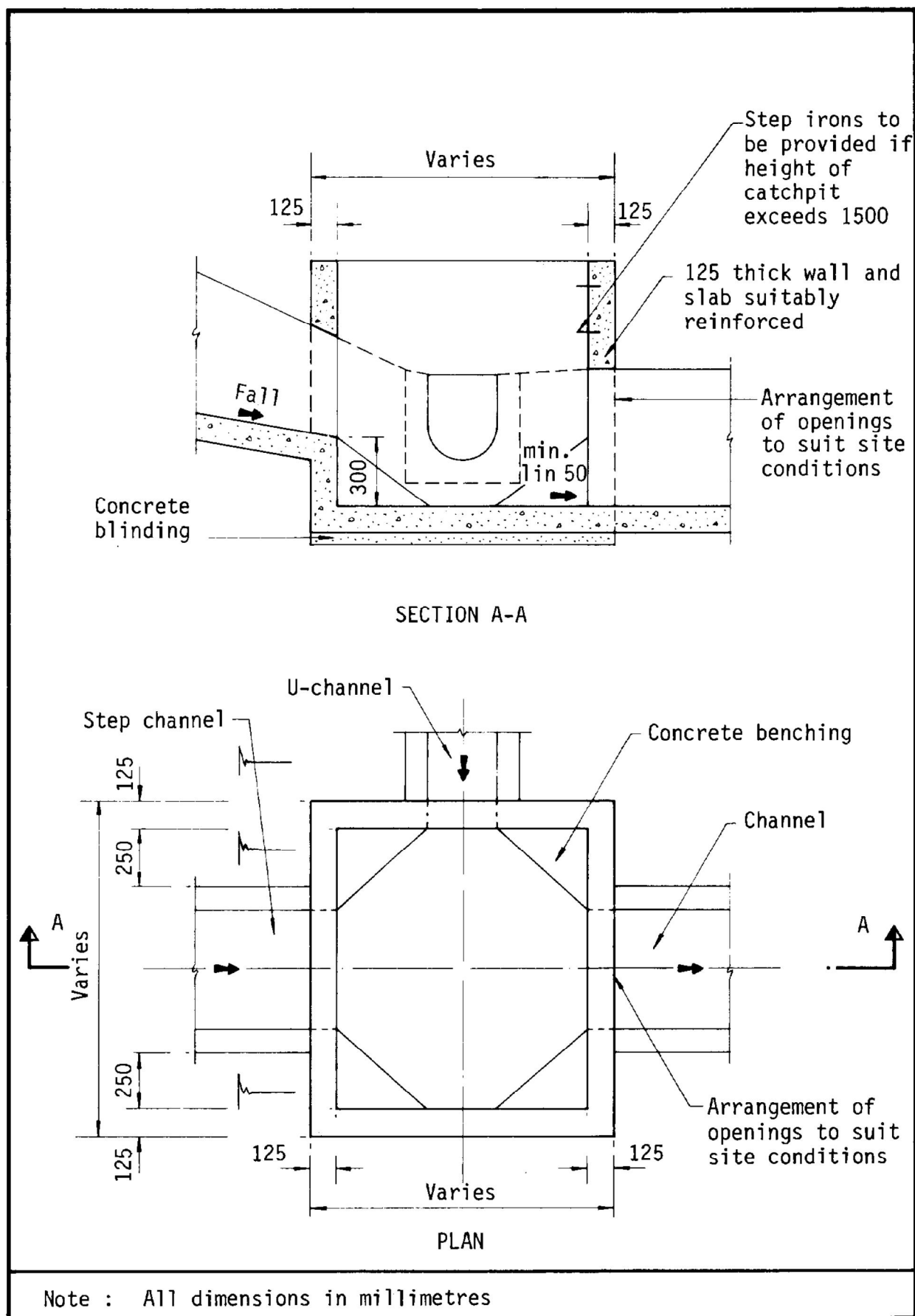
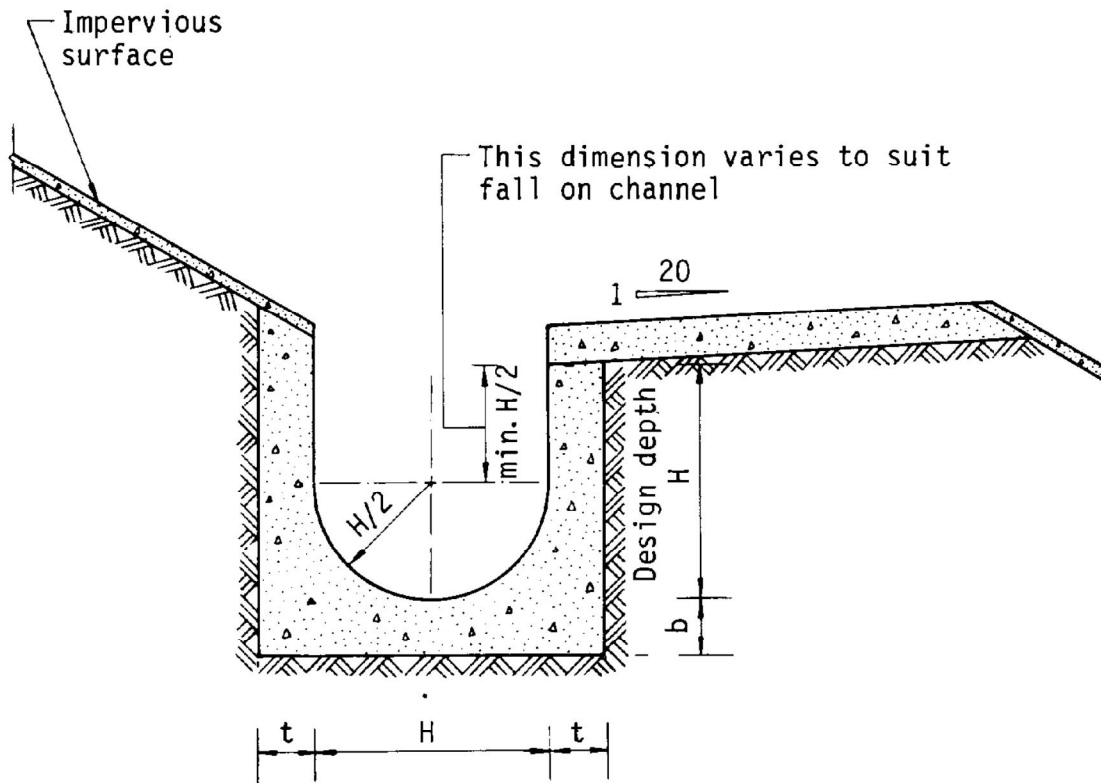


Figure 8.10 - Typical Details of Catchpits



Dimensions of U - channel

Nominal size of channel H (mm)	Thickness t (mm)	Thickness b (mm)
225 to 600	150	150
675 to 1200	175	225

Figure 8.11 - Typical U-channel Details