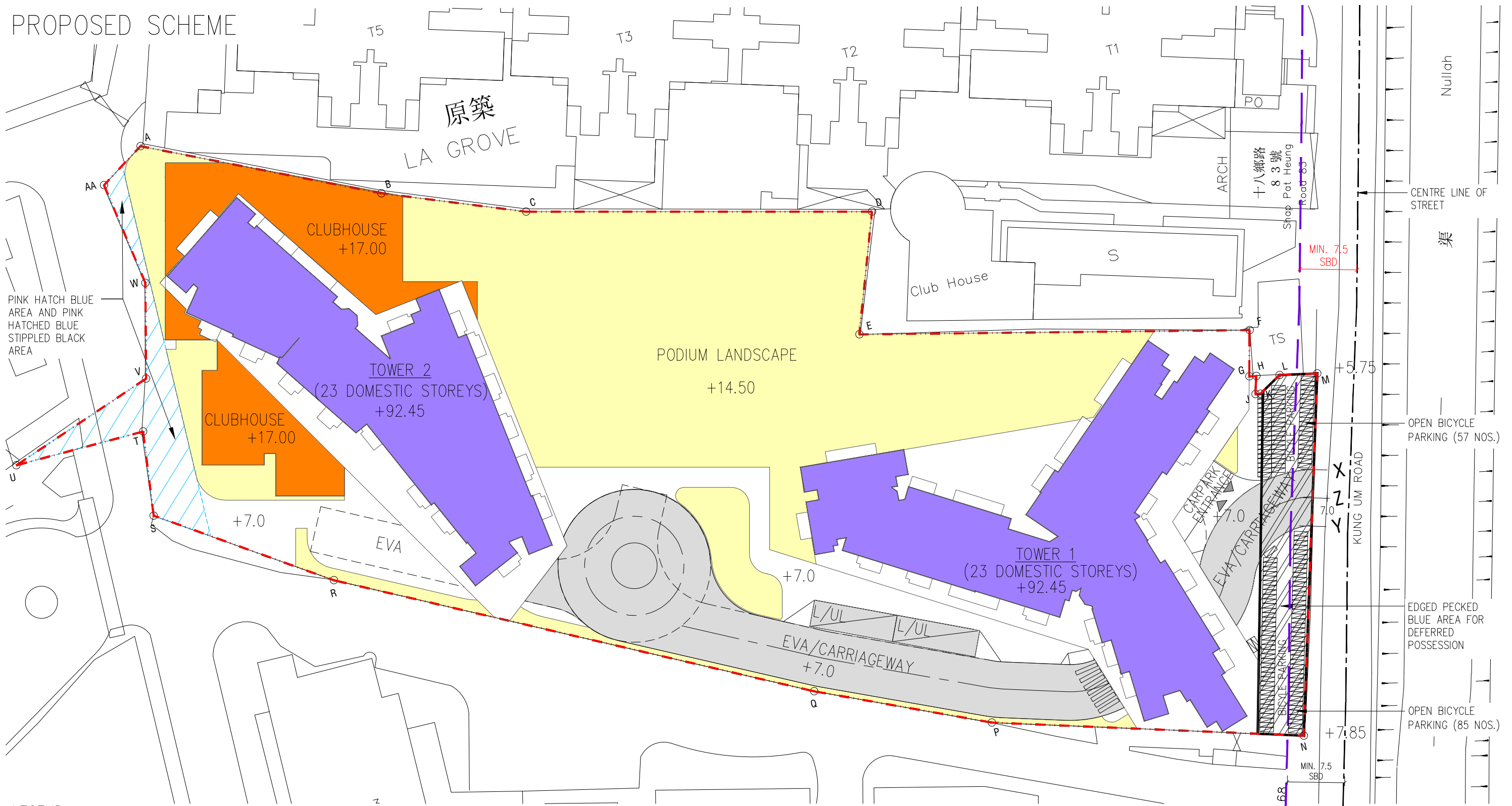


Appendix 1

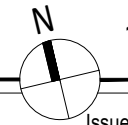
Architectural Drawings

PROPOSED SCHEME



- LEGEND**
- BOUNDARY
 - RESIDENTIAL
 - CLUBHOUSE
 - LANDSCAPE
 - DRIVEWAY, CARPARK
 - E/M
 - PINK HATCH BLUE AREA
 - EDGED PECKED BLUE AREA FOR DEFERRED POSSESSION

MASTER LAYOUT PLAN 1:500

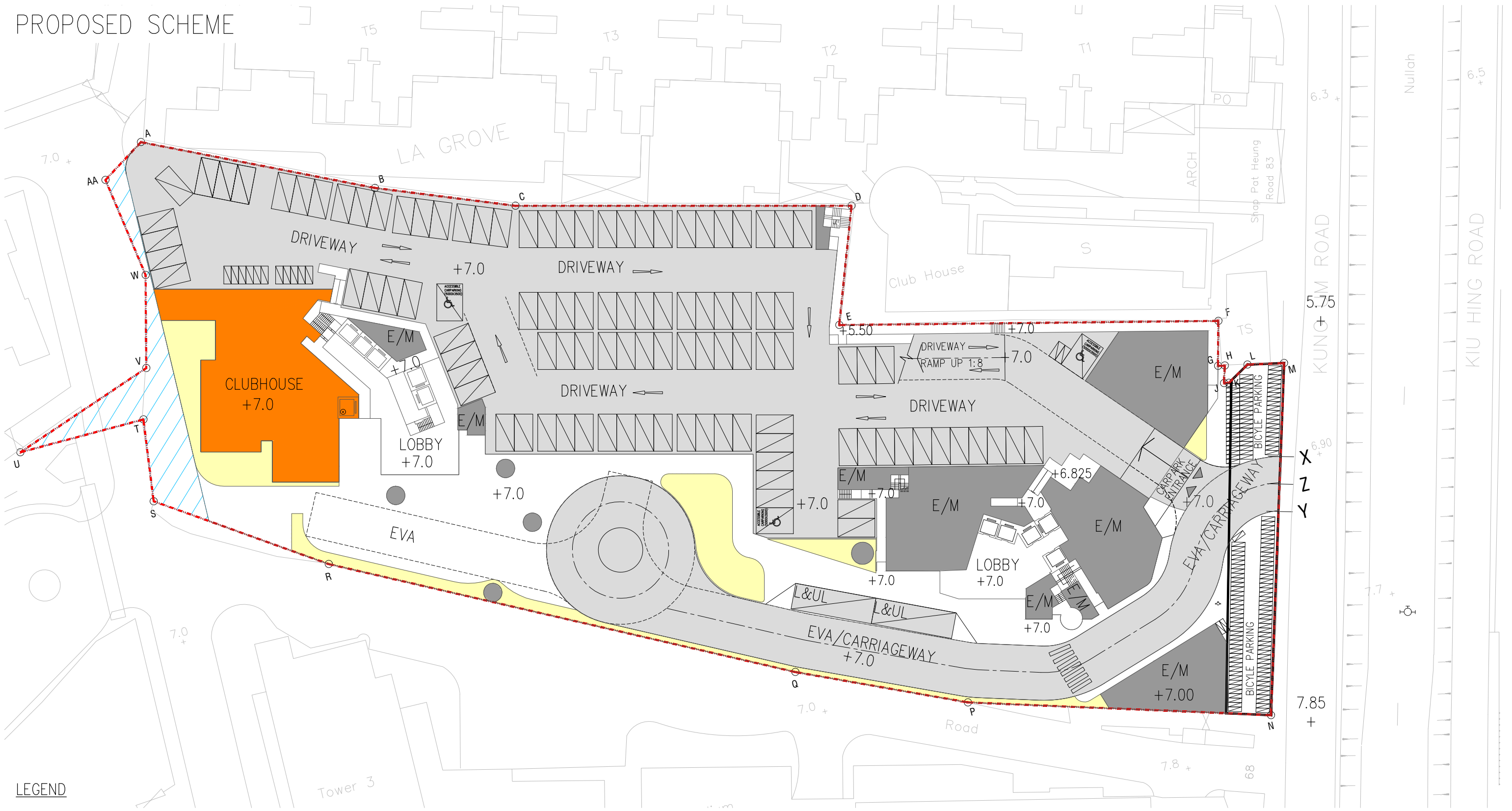


PROPOSED RESIDENTIAL DEVELOPMENT
AT KUNG UM ROAD ON LOT NO. 4066 IN D.D. 120

Drawing Number : S16_MLP
Revision Number : -
Project No. 25092NT
File Path : U:\Studio_V\Proj_Data\2025\25092NT Lung Tin Tsuen Phase 2\DRAWING\SUB\Section 16 application\MODEL\S16_MLP.dwg
Issue Date MAR/26



PROPOSED SCHEME



- LEGEND**
- BOUNDARY
 - RESIDENTIAL
 - CLUBHOUSE
 - LANDSCAPE
 - DRIVEWAY, CARPARK
 - E/M
 - PINK HATCH BLUE AREA
 - EDGED PECKED BLUE AREA FOR DEFERRED POSSESSION

GROUND FLOOR PLAN
1:500

**PROPOSED RESIDENTIAL DEVELOPMENT
 AT KUNG UM ROAD ON LOT NO. 4066 IN D.D. 120**

Drawing Number : S16_GF Revision Number : - Project No. **25092NT**
 File Path : U:\Studio_V\Proj_Data\2025\25092NT Lung Tin Tsuen Phase 2\DRAWING\SUB\Section 16 application\MODELS\16_GF.dwg
 Issue Date **MAR/26**



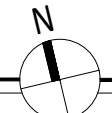
PROPOSED SCHEME



LEGEND

- BOUNDARY
- RESIDENTIAL
- CLUBHOUSE
- LANDSCAPE
- DRIVEWAY, CARPARK
- E/M
- PINK HATCH BLUE AREA
- EDGED PECKED BLUE AREA FOR DEFERRED POSSESSION

MEZZANINE FLOOR PLAN



1:500

PROPOSED RESIDENTIAL DEVELOPMENT
AT KUNG UM ROAD ON LOT NO. 4066 IN D.D. 120

Drawing Number :
S16_MF

Revision Number :
-

Project No.

25092NT

Issue Date

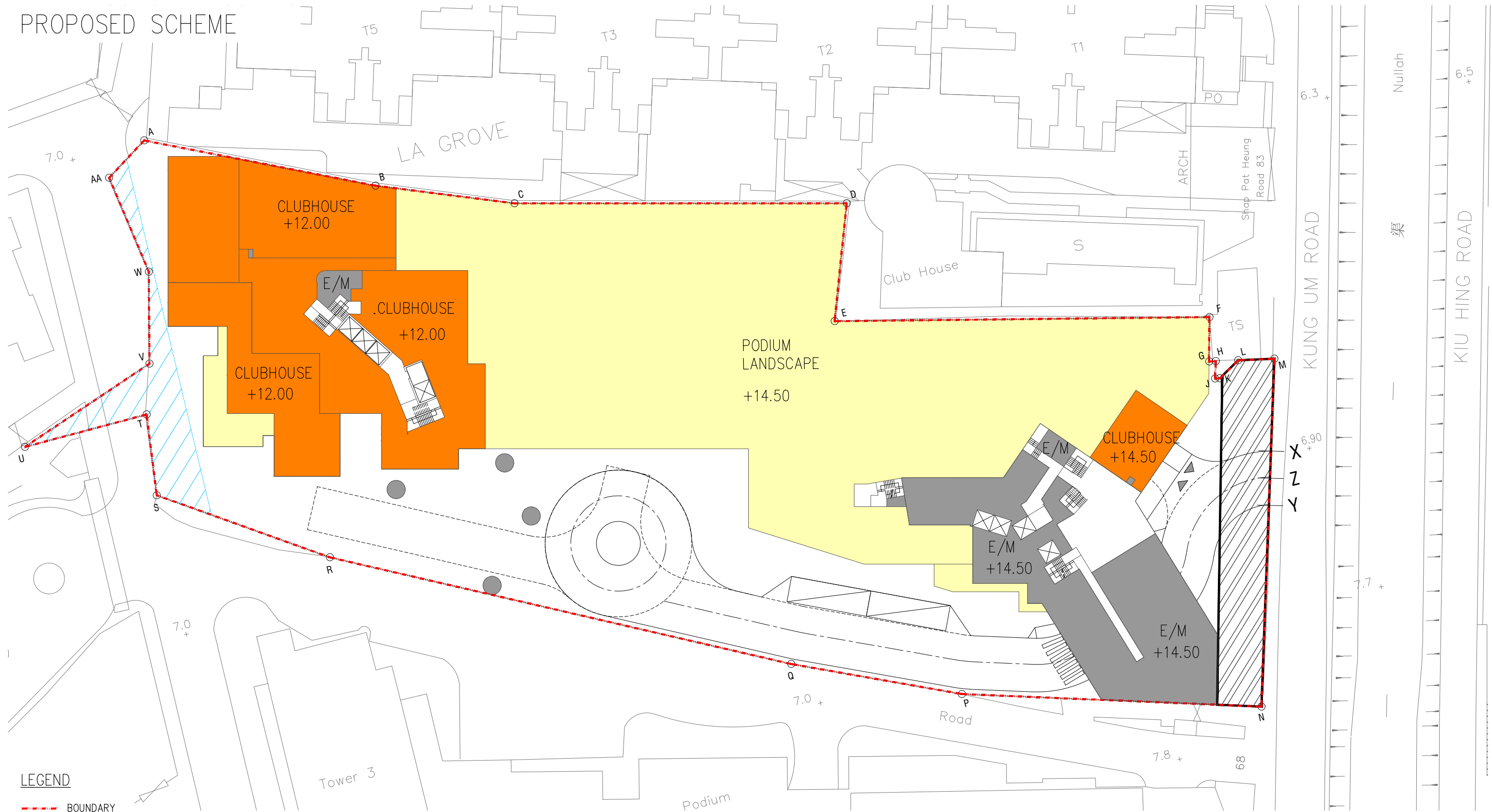
MAR/26

File Path :
U:\Studio_V\Proj_Data\2025\25092NT Lung Tin Tsuen Phase 2\DRAWING\SUB\Section 16 application\MODELS\16_MF.dwg



呂元祥建築師事務所

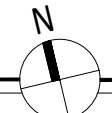
PROPOSED SCHEME



LEGEND

- BOUNDARY
- RESIDENTIAL
- CLUBHOUSE
- LANDSCAPE
- DRIVEWAY, CARPARK
- E/M
- PINK HATCH BLUE AREA
- EDGED PECKED BLUE AREA FOR DEFERRED POSSESSION

FIRST FLOOR PLAN



1:500

PROPOSED RESIDENTIAL DEVELOPMENT
AT KUNG UM ROAD ON LOT NO. 4066 IN D.D. 120

Drawing Number :
S16_1F_PF

Revision Number :
-

Project No.

25092NT

Issue Date

MAR/26

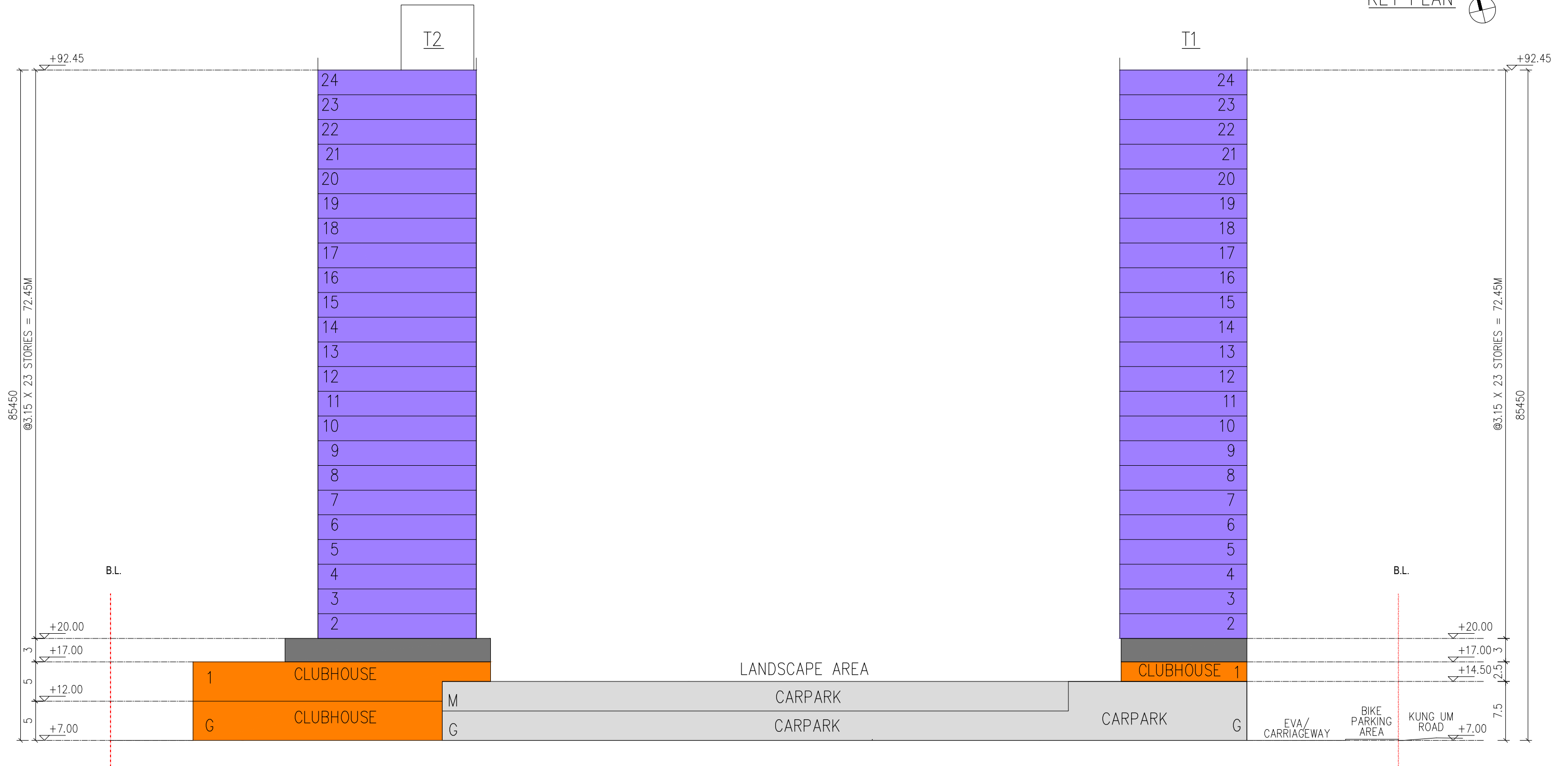
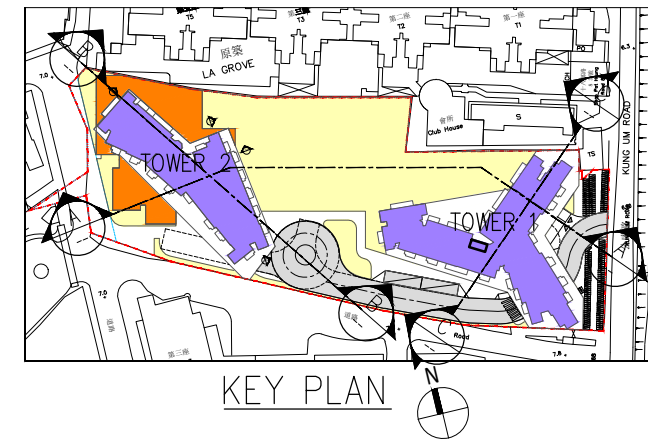
File Path :
U:\Studio_V\Proj_Data\2025\25092NT Lung Tin Tsuen Phase 2\DRAWING\SUB\Section 16 application\MODEL\S16_1F_PF.dwg



呂元祥建築師事務所

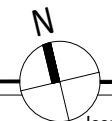
PROPOSED SCHEME LEGEND

- BOUNDARY
- RESIDENTIAL
- CLUBHOUSE
- LANDSCAPE
- E/M
- DRIVEWAY, CARPARK
- PINK HATCH BLUE AREA
- EDGED PECKED BLUE AREA FOR DEFERRED POSSESSION



SECTION A-A

DIAGRAMMATIC SECTION A-A



1:500

PROPOSED RESIDENTIAL DEVELOPMENT
AT KUNG UM ROAD ON LOT NO. 4066 IN D.D. 120

Drawing Number : S16_SECTION -
Revision Number :

Project No.

25092NT

Issue Date

MAR/26



呂元祥建築師事務所

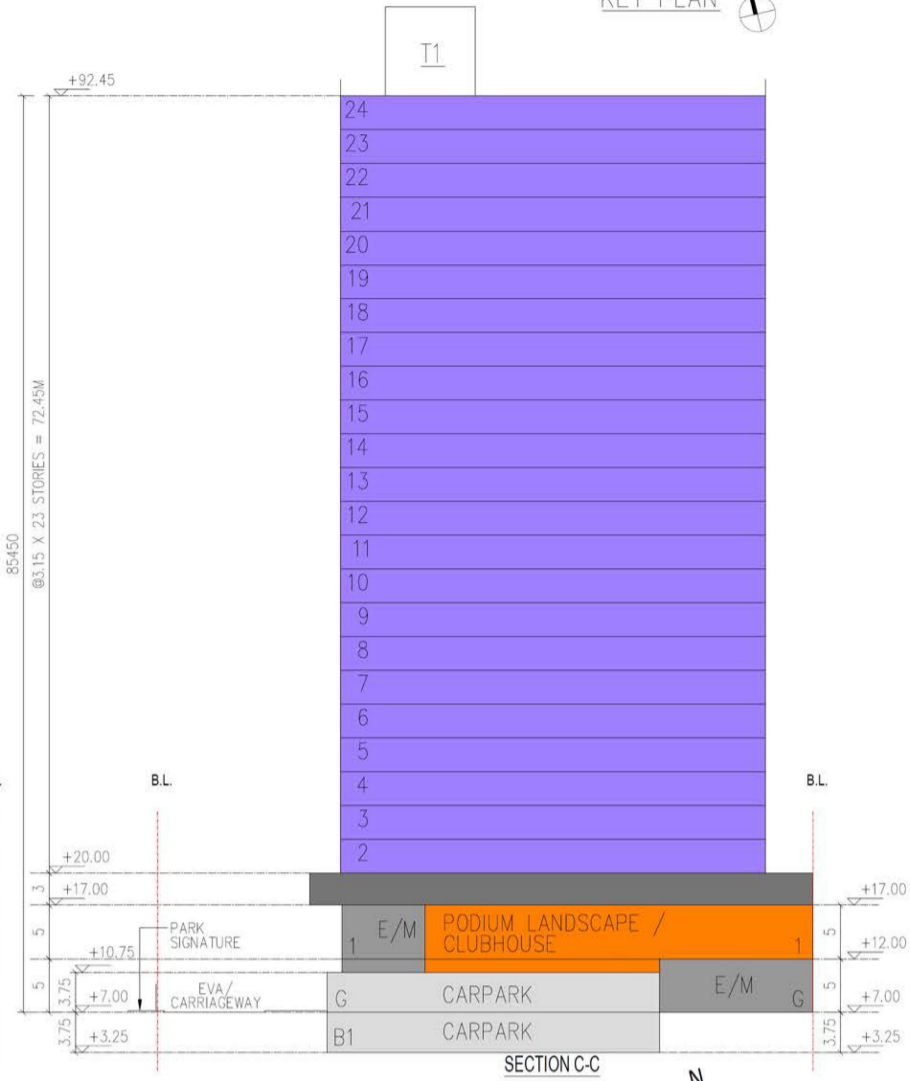
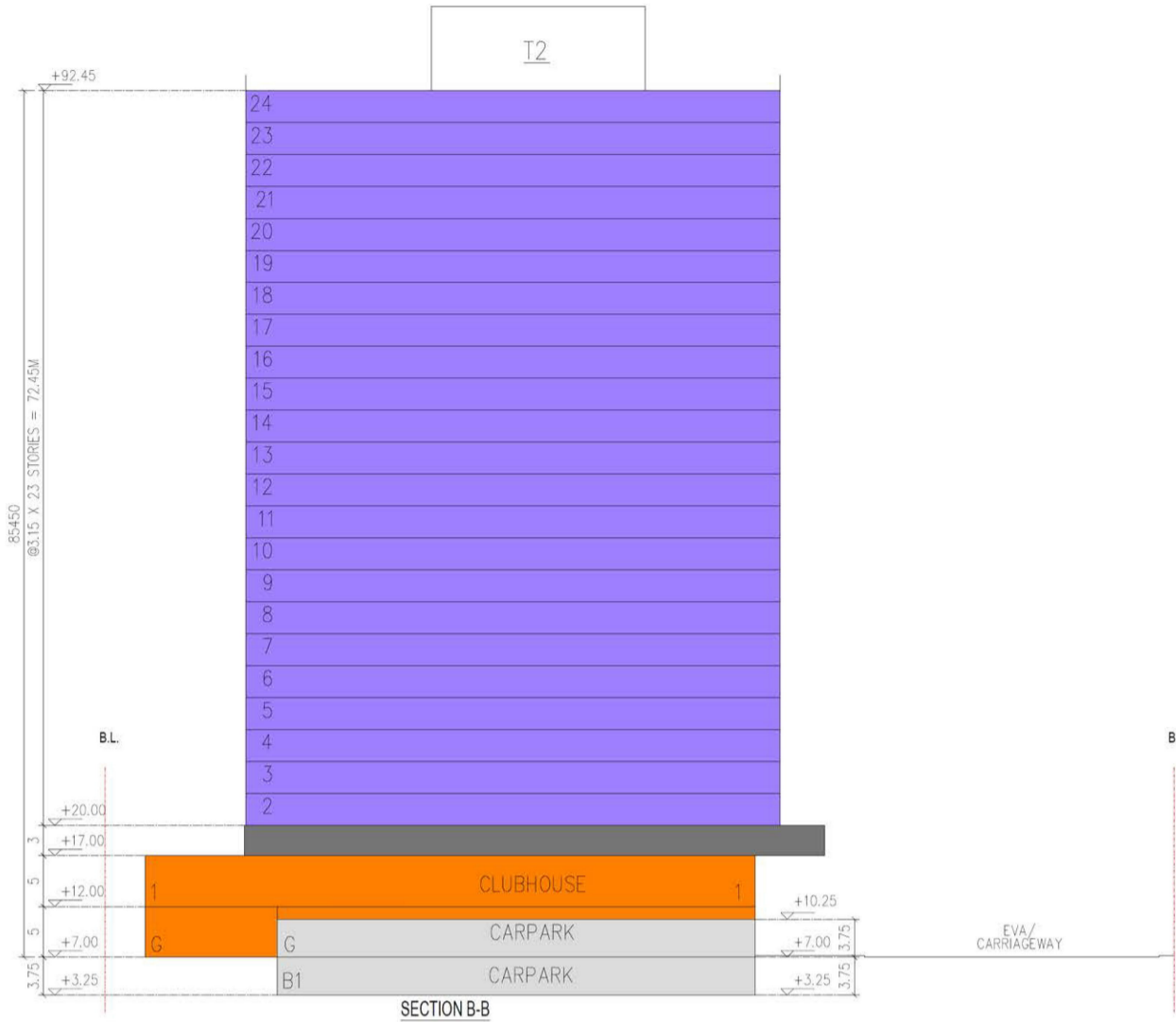
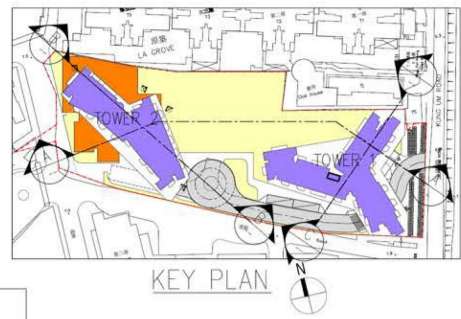
File Path : U:\Studio_VIProj_Data\2025\25092NT Lung Tin Tsuen Phase 2\DRAWING\SUBI\Section 16 application\MODELS\16_SECTION.dwg

Appendix 2

Comparison Plan

CONFORMING SCHEME
LEGEND

- BOUNDARY
- RESIDENTIAL
- CLUBHOUSE
- LANDSCAPE
- E/M
- DRIVEWAY, CARPARK
- PINK HATCH BLUE AREA
- EDGED PECKED BLUE AREA FOR DEFERRED POSSESSION



DIAGRAMMATIC SECTION B-B & SECTION C-C 1:500

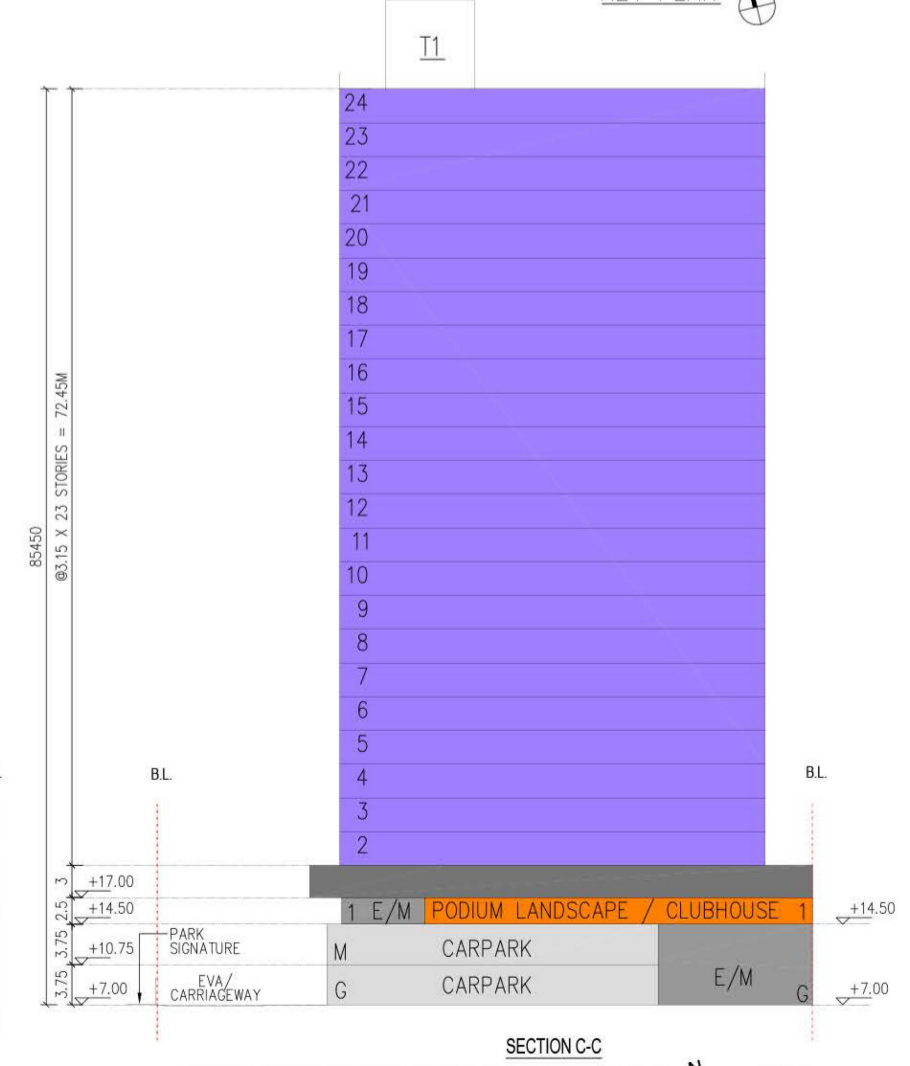
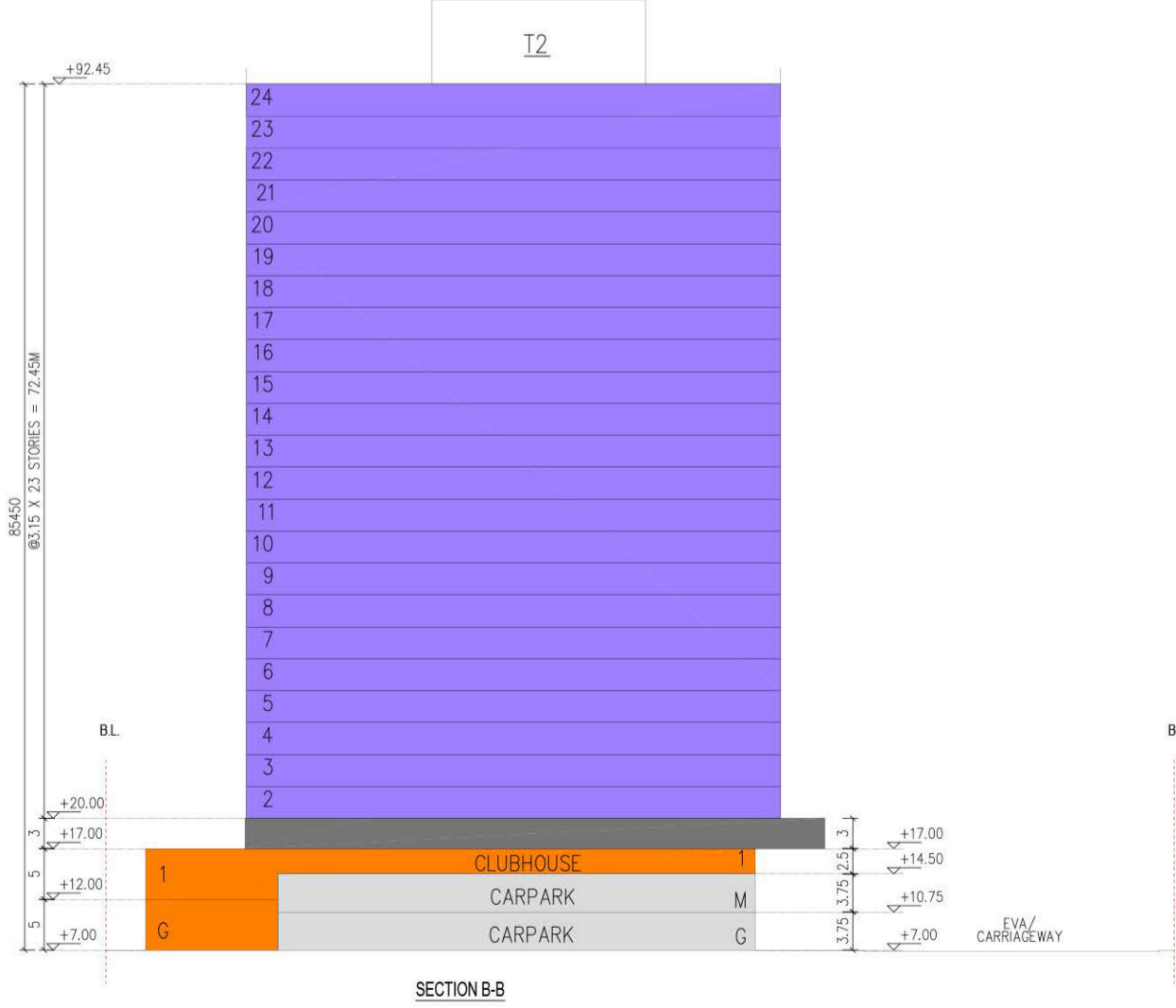
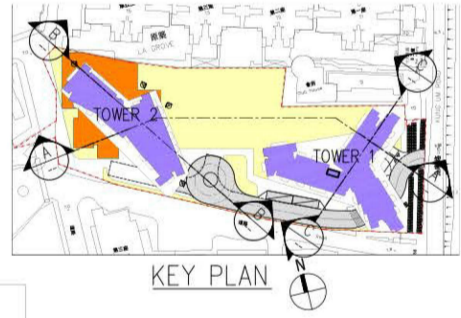


PROPOSED RESIDENTIAL DEVELOPMENT
AT KUNG UM ROAD ON LOT NO. 4066 IN D.D. 120

Drawing Number : S16_SECTION - Revision Number : Project No. 25092NT Issue Date MAR/26
File Path : U:\Studio_VProj_Data\2025\25092NT Lung Tin Tsuen Phase 2\DRAWINGS\SUB\Section 16\application\MODELS16_SECTION.dwg

PROPOSED SCHEME
LEGEND

- BOUNDARY
- RESIDENTIAL
- CLUBHOUSE
- LANDSCAPE
- E/M
- DRIVEWAY, CARPARK
- PINK HATCH BLUE AREA
- EDGED PECKED BLUE AREA FOR DEFERRED POSSESSION



DIAGRAMMATIC SECTION B-B & SECTION C-C 1:500

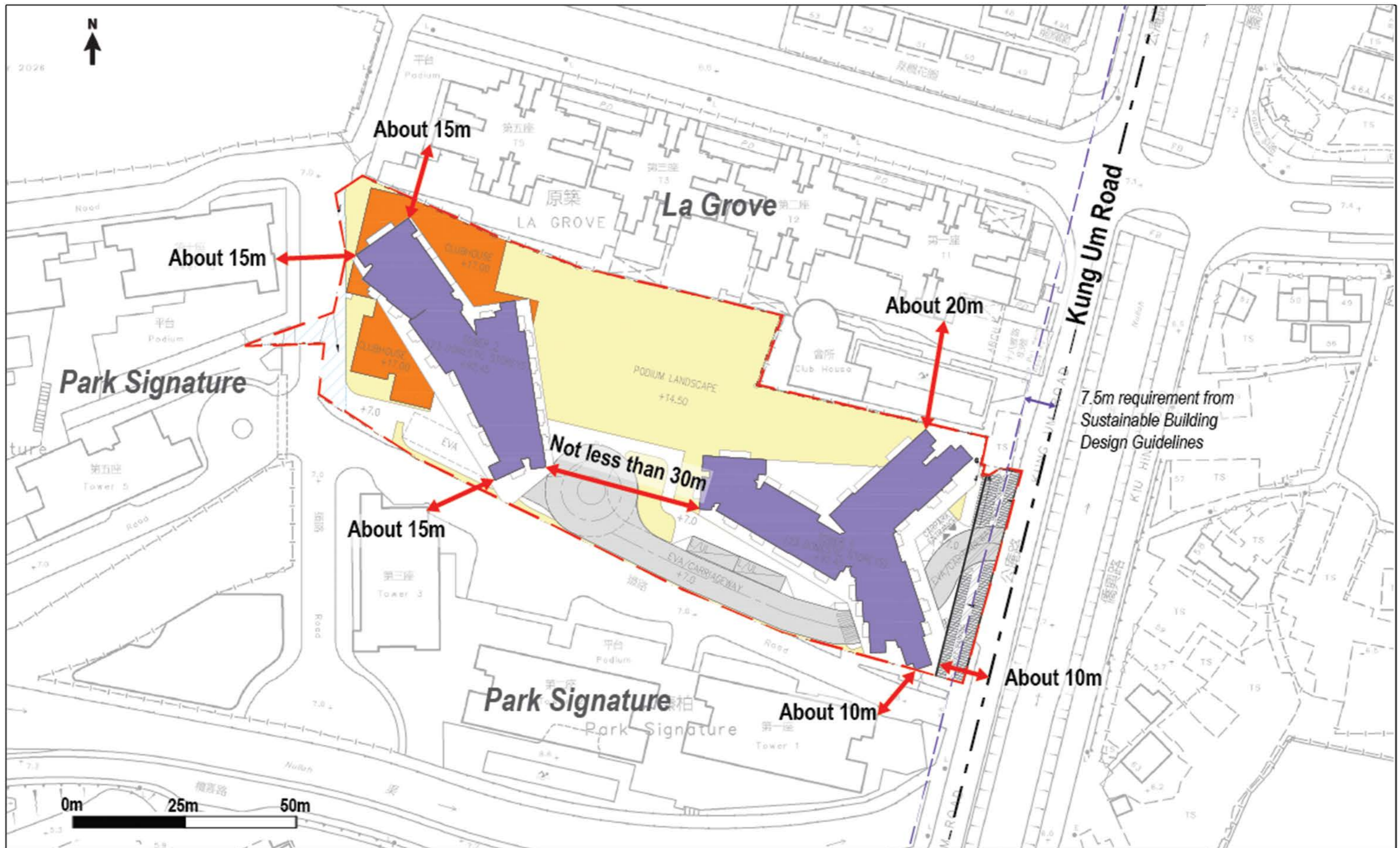


PROPOSED RESIDENTIAL DEVELOPMENT
AT KUNG UM ROAD ON LOT NO. 4066 IN D.D. 120

Drawing Number : S16_SECTION - Revision Number : Project No. 25092NT Issue Date MAR/26
File Path : U:\Studio_VProj_Data\2025\25092NT Lung Tin Tsuen Phase 2\DRAWINGS\SUB\Section 16\application\MODELS16_SECTION.dwg

Annex C

Proposed Design Measures Plan



PLANNING LIMITED
規劃顧問有限公司

Proposed Design Measures

Proposed Minor Relaxation of Building Height Restriction for Permitted Flat in "Residential (Group A) 1" Zone, Lot Nos. 2268S.A, 2268 RP, 2269 RP, 2270 RP, 2271, 2272, 2273 S.A RP, 2273 S.B ss.2, 2273 S.B ss.3, 2273 S.B ss.4, 2273 S.B RP, 2273 S.C ss.2, 2274, 2275 and Adjoining Government Land in DD120 Kung Um Road, Yuen Long, N.T

S16 Planning Application

Figure 3.1

Date: 27 May 2026