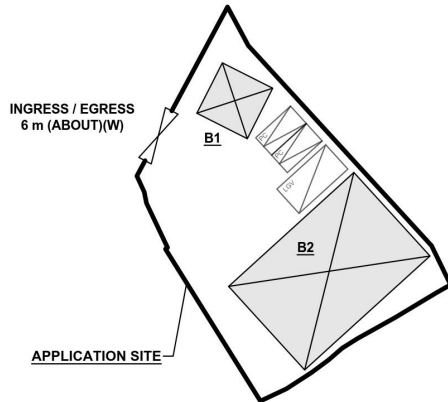


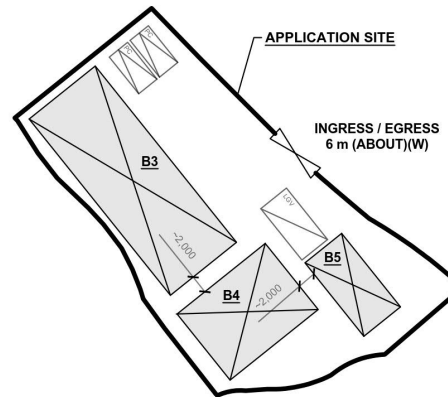
## DEVELOPMENT PARAMETERS

APPLICATION SITE AREA	: 1,624 m <sup>2</sup>	(ABOUT)
COVERED AREA	: 626 m <sup>2</sup>	(ABOUT)
UNCOVERED AREA	: 998 m <sup>2</sup>	(ABOUT)
PLOT RATIO	: 0.41	(ABOUT)
SITE COVERAGE	: 39 %	(ABOUT)
NO. OF STRUCTURE	: 5	
DOMESTIC GFA	: NOT APPLICABLE	
NON-DOMESTIC GFA	: 662 m <sup>2</sup>	(ABOUT)
TOTAL GFA	: 662 m <sup>2</sup>	(ABOUT)
BUILDING HEIGHT	: 3 m - 8.23 m	(ABOUT)
NO. OF STOREY	: 1 - 2	



STRUCTURE	USE	COVERED AREA	GFA	BUILDING HEIGHT
B1	SITE OFFICE	36 m <sup>2</sup> (ABOUT)	72 m <sup>2</sup> (ABOUT)	7 m (ABOUT)(2-STOREY)
B2	WAREHOUSE (EXCLUDING D.G.G.)	216 m <sup>2</sup> (ABOUT)	216 m <sup>2</sup> (ABOUT)	8.23 m (ABOUT)(1-STOREY)
B3	WAREHOUSE (EXCLUDING D.G.G.)	216 m <sup>2</sup> (ABOUT)	216 m <sup>2</sup> (ABOUT)	8.23 m (ABOUT)(1-STOREY)
B4	WAREHOUSE (EXCLUDING D.G.G.)	108 m <sup>2</sup> (ABOUT)	108 m <sup>2</sup> (ABOUT)	8.23 m (ABOUT)(1-STOREY)
B5	WAREHOUSE (EXCLUDING D.G.G.)	50 m <sup>2</sup> (ABOUT)	50 m <sup>2</sup> (ABOUT)	3 m (ABOUT)(1-STOREY)
TOTAL		626 m <sup>2</sup> (ABOUT)	662 m <sup>2</sup> (ABOUT)	

D.G.G. - DANGEROUS GOODS GODOWN

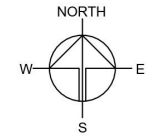


## PARKING AND LOADING/UNLOADING PROVISION

NO. OF PRIVATE CAR PARKING SPACE	: 4
DIMENSION OF PARKING SPACE	: 5 m (L) X 2.5 m (W)
NO. L/U.L SPACE FOR LIGHT GOODS VEHICLE	: 2
DIMENSION OF LOADING/UNLOADING SPACE	: 7 m (L) X 3.5 m (W)

## LEGEND

	APPLICATION SITE
	STRUCTURE
	PARKING SPACE (PC)
	L/U.L SPACE (LGV)
	INGRESS / EGRESS



PLANNING CONSULTANT



PROJECT

PROPOSED TEMPORARY  
WAREHOUSE (EXCLUDING  
DANGEROUS GOODS GODOWN)  
WITH ANCILLARY FACILITIES  
FOR A PERIOD OF 3 YEARS AND  
ASSOCIATED FILLING OF LAND

SITE LOCATION

VARIOUS LOTS IN D.D. 107,  
FUNG KAT HEUNG, KAM TIN,  
YUEN LONG, NEW TERRITORIES

SCALE

1:700 @ A4

DRAWN BY	DATE
MN	21.11.2024
CHECKED BY	DATE
APPROVED BY	DATE
DWG. TITLE	
LAYOUT PLAN	
DWG NO.	VER.
PLAN 4	001

(摘錄自申請人於 24. 12. 2024 呈交的申請書)

(Extract from Applicant's  
Submission of 24.12.2024)

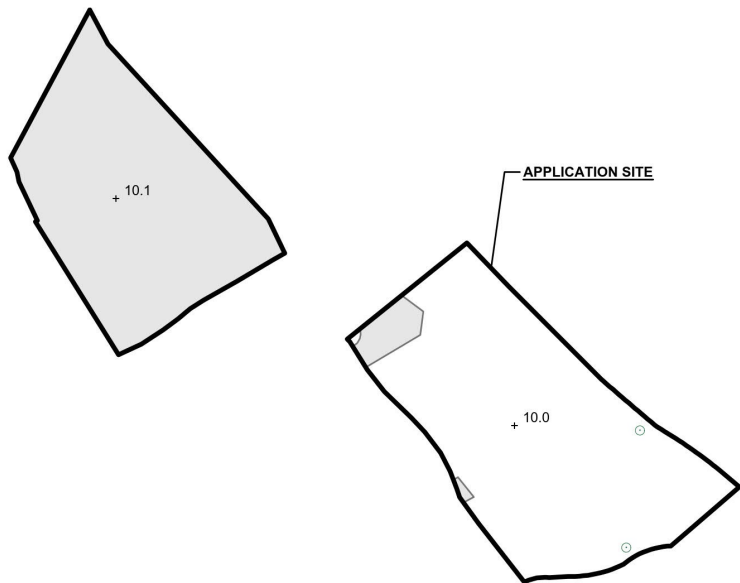
參考編號  
REFERENCE No.  
A/YL-KTN/1078

繪圖  
DRAWING  
A - 1

# EXISTING CONDITION OF THE APPLICATION SITE

APPLICATION SITE AREA	: 1,624 m <sup>2</sup>	(ABOUT)
EXISTING SITE SURFACE	: SOILED GROUND AND HARD-PAVED	
EXISTING SITE LEVELS	: +10.0 mPD TO +10.1 mPD	(ABOUT)
EXISTING FILLED AREA	: 737 m <sup>2</sup> (45%)	(ABOUT)

PORTION OF THE APPLICATION SITE HAS ALREADY BEEN HARD-PAVED FOR CIRCULATION AND SITE FORMATION OF EXISTING STRUCTURES.



EXISTING SITE LEVEL OF  
THE APPLICATION SITE  
(INDICATIVE ONLY)

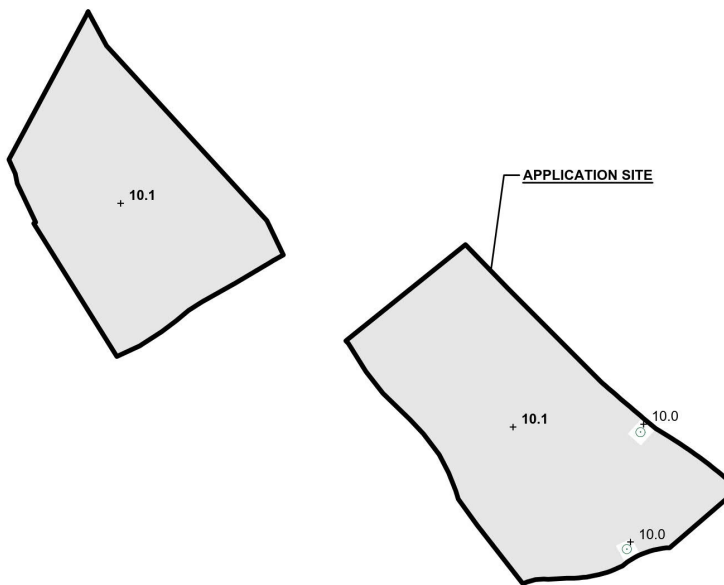
## LEGEND

- APPLICATION SITE
- EXISTING SOILED GROUND
- EXISTING FILLED AREA
- +10.0 EXISTING SITE LEVEL
- EXISTING TREE

SITE LEVELS ARE FOR REFERENCE ONLY.

# PROPOSED FILLING OF LAND AREA OF THE APPLICATION SITE

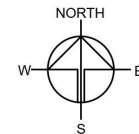
APPLICATION SITE AREA	: 1,624 m <sup>2</sup>	(ABOUT)
FILLING OF LAND TO BE REGULARISED	: 737 m <sup>2</sup> (45.4%)	(ABOUT)
PROPOSED FILLING OF LAND AREA	: 876 m <sup>2</sup> (53.9%)	(ABOUT)
UNPAVED AREA	: 11 m <sup>2</sup> (0.7%)	(ABOUT)
DEPTH OF LAND FILLING	: NOT MORE THAN 0.1 m	
PROPOSED SITE LEVELS	: +10.1 mPD (ABOUT)	
MATERIAL OF LAND FILLING	: CONCRETE	
PURPOSE OF LAND FILLING	: SITE FORMATION OF STRUCTURE AND CIRCULATION SPACE	



PROPOSED SITE LEVEL OF  
THE APPLICATION SITE  
(INDICATIVE ONLY)

## LEGEND

- APPLICATION SITE
- PROPOSED FILLED AREA
- +10.1 PROPOSED SITE LEVEL
- EXISTING TREE



PLANNING CONSULTANT



PROJECT

PROPOSED WAREHOUSE (EXCLUDING DANGEROUS GOODS GODOWN) WITH ANCILLARY FACILITIES FOR A PERIOD OF 3 YEARS AND ASSOCIATED FILLING OF LAND

SITE LOCATION

VARIOUS LOTS IN D.D. 107, FUNG KAT HEUNG, KAM TIN, YUEN LONG, NEW TERRITORIES

SCALE

1:600 @ A\*

DRAWN BY

CC

DATE

24.2.2025

CHECKED BY

DATE

APPROVED BY

DATE

DWG. TITLE

FILLING OF LAND AREA

DWG NO.

ANNEX 2

VER.

001

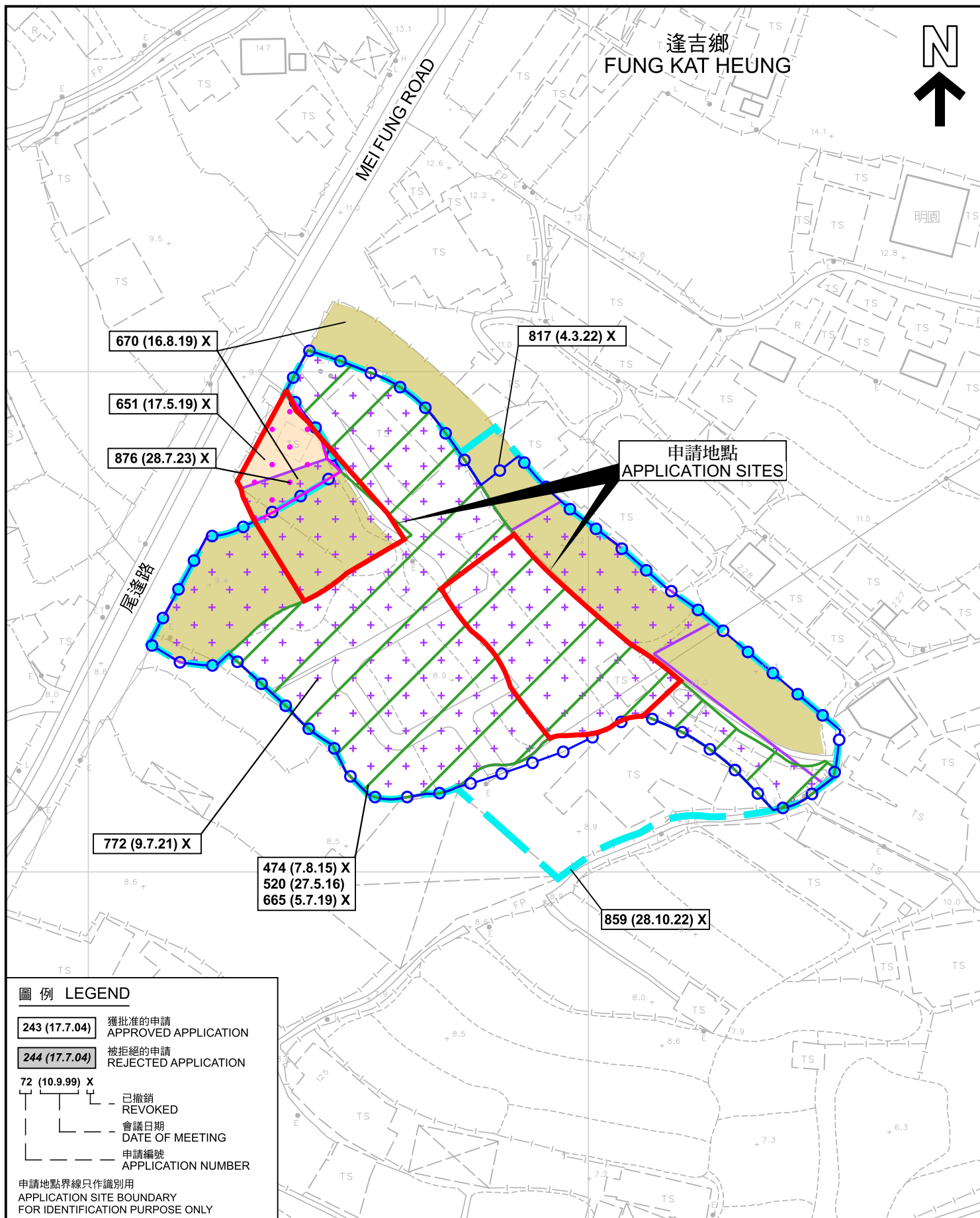
(摘錄自申請人於 3.3.2025 呈交的進一步資料)  
(Extract from Applicant's Further  
Information Submitted on 3.3.2025)

參考編號  
REFERENCE No.  
A/YL-KTN/1078

繪圖  
DRAWING  
A - 2







### 先前申請圖 PREVIOUS APPLICATION PLAN

擬議臨時貨倉(危險品倉庫除外)(為期3年)及相關的填土工程  
新界元朗錦田逢吉鄉丈量約份第107約地段第913號餘段(部分)、  
第920號餘段(部分)及第926號餘段(部分)  
PROPOSED TEMPORARY WAREHOUSE  
(EXCLUDING DANGEROUS GOODS GODOWN)  
FOR A PERIOD OF 3 YEARS AND ASSOCIATED FILLING OF LAND  
LOTS 913 RP (PART), 920 RP (PART) AND 926 RP (PART) IN D.D. 107,  
FUNG KAT HEUNG, KAM TIN, YUEN LONG, NEW TERRITORIES  
SCALE 1 : 1 000 比例尺

米 METRES 20 0 20 40 米 METRES

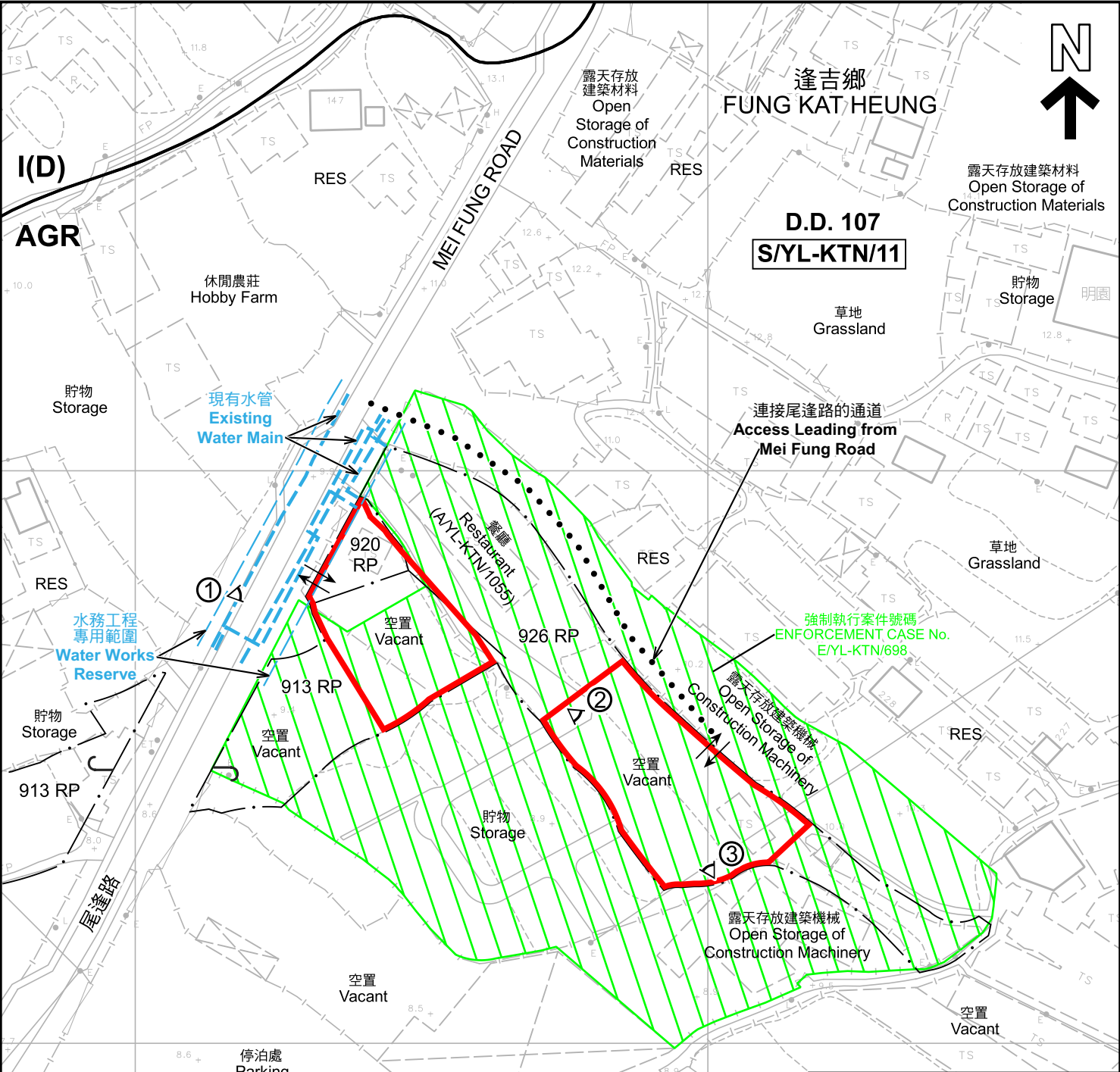
規劃署  
PLANNING  
DEPARTMENT



參考編號  
REFERENCE No.  
A/YL-KTN/1078

圖 PLAN  
A-1b

本摘要圖於2025年3月31日擬備，  
所根據的資料為測量圖編號 6-NE-2C  
EXTRACT PLAN PREPARED ON 31.3.2025  
BASED ON SURVEY SHEET No. 6-NE-2C



註釋 Notes :  
2024年12月31日勘测的土地用途  
Land uses shown on this plan are in accordance with the land use survey conducted by the Planning Department on 31.12.2024

圖例 LEGEND

申請地點(界線只作識別用)  
APPLICATION SITE  
(BOUNDARY FOR IDENTIFICATION  
PURPOSE ONLY)

I(D)

工業(丁類)  
INDUSTRIAL (GROUP D)

AGR

農業  
AGRICULTURE

RES

住用構築物  
RESIDENTIAL STRUCTURE

A/C

常耕農地  
CULTIVATED AGRICULTURAL LAND

① ◁

實地照片的觀景點  
VIEWING POINT OF SITE PHOTO

↔

入口/出口  
INGRESS / EGRESS

平面圖 SITE PLAN

擬議臨時貨倉(危險品倉庫除外)(為期3年)及相關的填土工程  
新界元朗錦田逢吉鄉丈量約份第107約地段第913號餘段(部分)、  
第920號餘段(部分)及第926號餘段(部分)  
PROPOSED TEMPORARY WAREHOUSE  
(EXCLUDING DANGEROUS GOODS GODOWN)  
FOR A PERIOD OF 3 YEARS AND ASSOCIATED FILLING OF LAND  
LOTS 913 RP (PART), 920 RP (PART) AND 926 RP (PART) IN D.D. 107,  
FUNG KAT HEUNG, KAM TIN, YUEN LONG, NEW TERRITORIES  
SCALE 1 : 1 000 比例尺

米 METRES 20 0 20 40 米 METRES

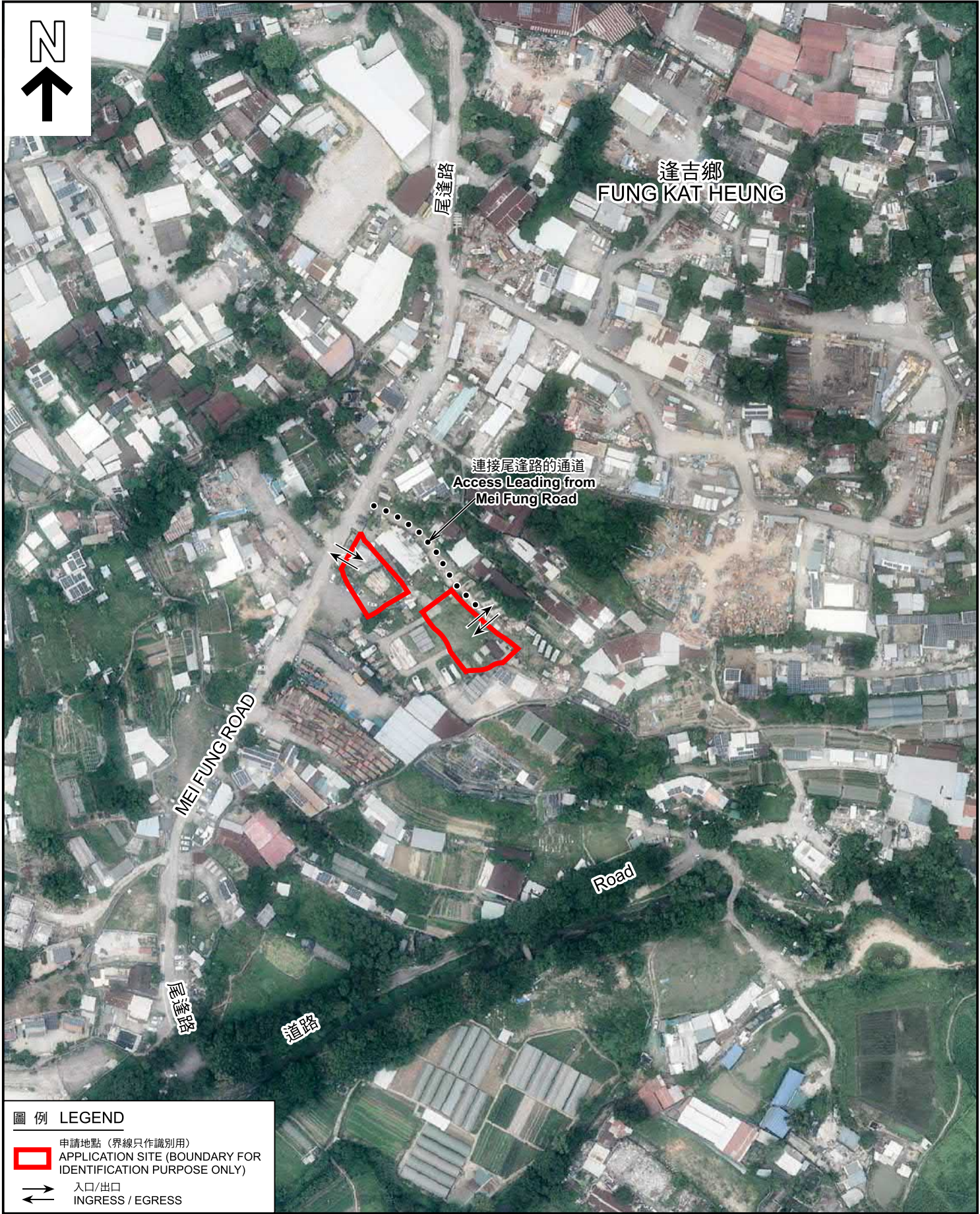
本摘要圖於2025年4月8日擬備，  
所根據的資料為測量圖編號  
6-NE-2C  
EXTRACT PLAN PREPARED ON 8.4.2025  
BASED ON SURVEY SHEET No.  
6-NE-2C

規劃署  
PLANNING  
DEPARTMENT

參考編號  
REFERENCE No.  
A/YL-KTN/1078

圖 PLAN  
A-2





圖例 LEGEND

 申請地點 (界線只作識別用)  
APPLICATION SITE (BOUNDARY FOR IDENTIFICATION PURPOSE ONLY)

 入口/出口  
INGRESS / EGRESS

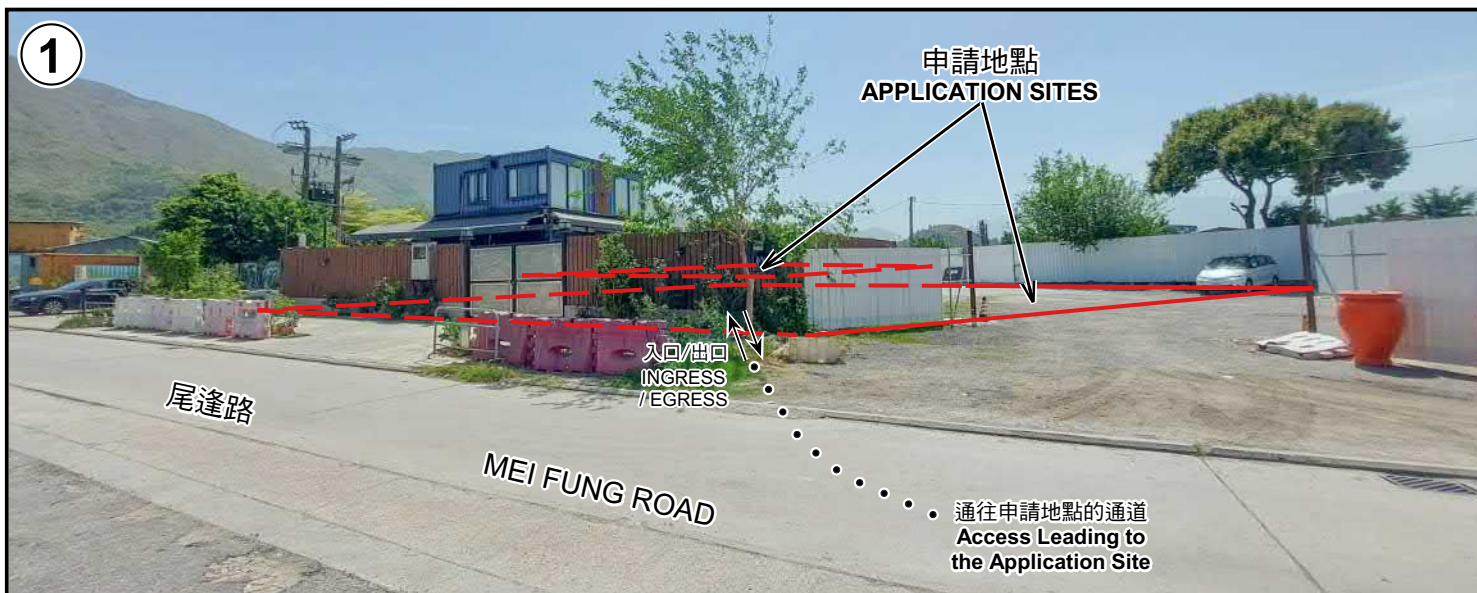
本摘要圖於2025年3月31日擬備，  
所根據的資料為地政總署於2024年8月11日  
拍得的航攝照片編號 E228781C  
EXTRACT PLAN PREPARED ON 31.3.2025  
BASED ON AERIAL PHOTO NO.  
E228781C TAKEN ON  
11.8.2024 BY LANDS DEPARTMENT

航攝照片 AERIAL PHOTO

擬議臨時貨倉(危險品倉庫除外)(為期3年)及相關的填土工程  
新界元朗錦田逢吉鄉丈量約份第107約地段第913號餘段(部分)、  
第920號餘段(部分)及第926號餘段(部分)  
PROPOSED TEMPORARY WAREHOUSE  
(EXCLUDING DANGEROUS GOODS GODOWN)  
FOR A PERIOD OF 3 YEARS AND ASSOCIATED FILLING OF LAND  
LOTS 913 RP (PART), 920 RP (PART) AND 926 RP (PART) IN D.D. 107,  
FUNG KAT HEUNG, KAM TIN, YUEN LONG, NEW TERRITORIES

規劃署 PLANNING DEPARTMENT		
參考編號 REFERENCE No. A/YL-KTN/1078	圖 PLAN A-3	





申請地點界線只作識別用 APPLICATION SITE BOUNDARY FOR IDENTIFICATION PURPOSE ONLY

### 實地照片 SITE PHOTOS

本圖於2025年4月16日擬備，所根據的資料為攝於2025年4月15日的實地照片  
PLAN PREPARED ON 16.4.2025  
BASED ON SITE PHOTOS  
TAKEN ON 15.4.2025

擬議臨時貨倉(危險品倉庫除外)(為期3年)及相關的填土工程  
新界元朗錦田達吉鄉丈量約份第107約地段第913號餘段(部分)、  
第920號餘段(部分)及第926號餘段(部分)  
PROPOSED TEMPORARY WAREHOUSE  
(EXCLUDING DANGEROUS GOODS GODOWN)  
FOR A PERIOD OF 3 YEARS AND ASSOCIATED FILLING OF LAND  
LOTS 913 RP (PART), 920 RP (PART) AND 926 RP (PART) IN D.D. 107,  
FUNG KAT HEUNG, KAM TIN, YUEN LONG, NEW TERRITORIES

規劃署  
PLANNING  
DEPARTMENT



參考編號  
REFERENCE No.  
A/YL-KTN/1078

圖 PLAN  
A-4