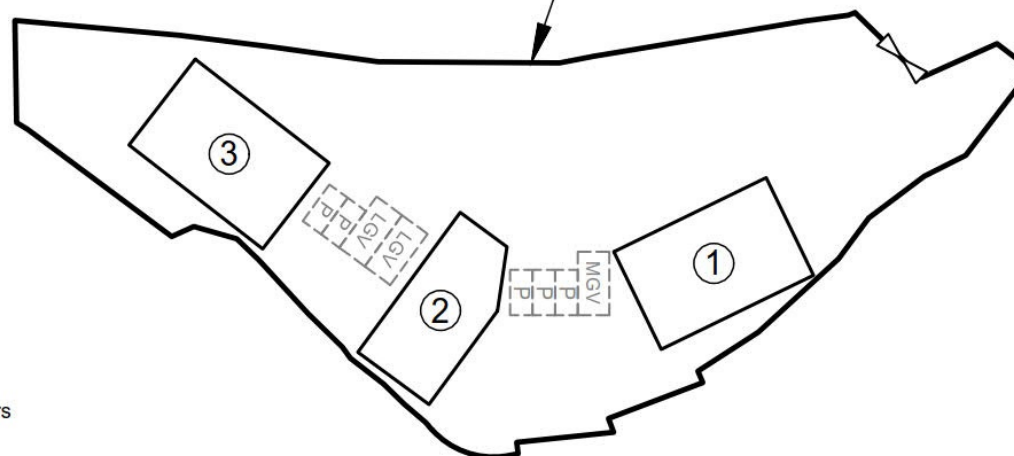




## Application Site



### Legend



Vehicular Ingress/ Egress



Parking space for private cars  
(5m (L) x 2.5m (W))



Parking space for light goods vehicle  
(7m (L) x 3.5m (W))



Parking space for medium goods vehicle  
(7m (L) x 3.5m (W))

Site Area: 3,116m<sup>2</sup>

No.	Uses	Floor Area (about)	Covered Area (about)	Storeys	Height
1	Shop (Hardware Groceries and Construction Materials) with Reception and Ancillary Office	225 m <sup>2</sup>	225 m <sup>2</sup>	1	5m
2	Shop (Hardware Groceries and Construction Materials)	177 m <sup>2</sup>	177 m <sup>2</sup>	1	5m
3	Shop (Hardware Groceries and Construction Materials)	225 m <sup>2</sup>	225 m <sup>2</sup>	1	5m
Total		627 m <sup>2</sup>	627 m <sup>2</sup>		

~~1:750~~

December 2024

## Layout Plan

Lots 1296, 1298, 1299, 1300 and 1301 in D.D. 106  
and adjoining Government Land  
Kam Tin, Yuen Long, New Territories

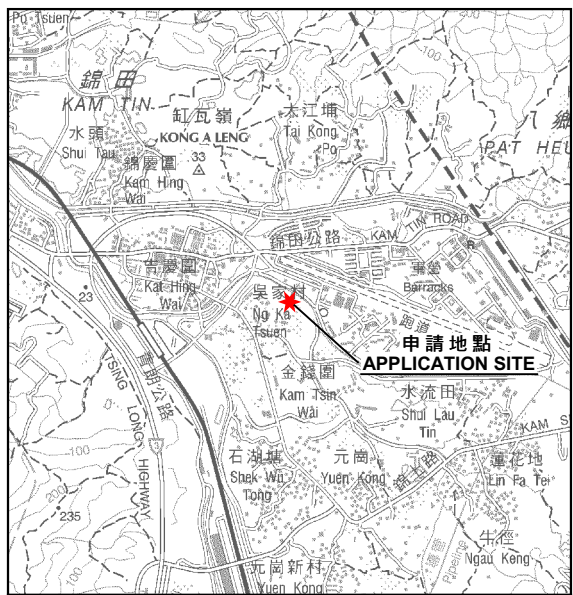
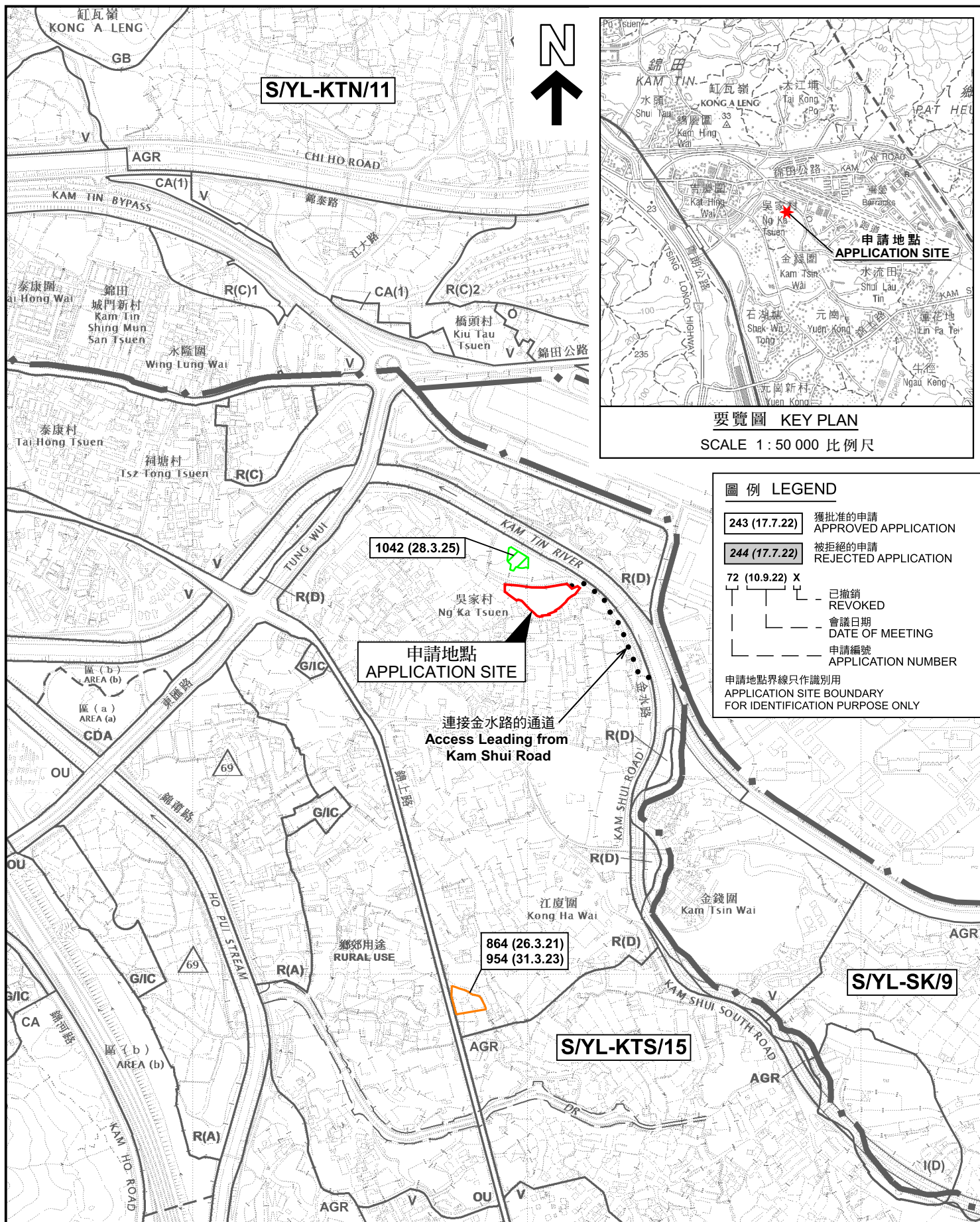
Goldrich Planners &  
Surveyors Ltd.

Plan 3a  
( P 23059B )

(摘錄自申請人於7.1.2025呈交的進一步資料)  
(Extract from Applicant's Further  
Information Submitted on 7.1.2025)

參考編號  
REFERENCE No.  
A/YL-KTS/1044

繪圖  
DRAWING  
A - 1



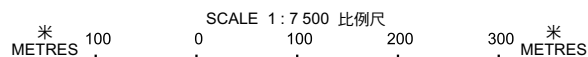
要覽圖 KEY PLAN  
SCALE 1 : 50 000 比例尺

圖例 LEGEND

- |                |                                |
|----------------|--------------------------------|
| 243 (17.7.22)  | 獲批准的申請<br>APPROVED APPLICATION |
| 244 (17.7.22)  | 被拒絕的申請<br>REJECTED APPLICATION |
| 72 (10.9.22) X | 已撤銷<br>REVOKED                 |
| ---            | 會議日期<br>DATE OF MEETING        |
| ---            | 申請編號<br>APPLICATION NUMBER     |
- 申請地點界線只作識別用  
APPLICATION SITE BOUNDARY  
FOR IDENTIFICATION PURPOSE ONLY

位置圖 LOCATION PLAN

擬議臨時商店及服務行業(五金雜貨及建築材料零售店)連附屬設施(為期5年)  
新界元朗丈量約份第106約地段第1296號、第1298號、  
第1299號、第1300號及第1301號和毗連政府土地  
PROPOSED TEMPORARY SHOP AND SERVICES  
(RETAIL SHOP FOR HARDWARE GROCERIES AND CONSTRUCTION MATERIALS)  
WITH ANCILLARY FACILITIES FOR A PERIOD OF 5 YEARS  
LOTS 1296, 1298, 1299, 1300 AND 1301 IN D.D. 106 AND  
ADJOINING GOVERNMENT LAND, YUEN LONG, NEW TERRITORIES



規劃署  
PLANNING  
DEPARTMENT



參考編號  
REFERENCE No.  
A/YL-KTS/1044

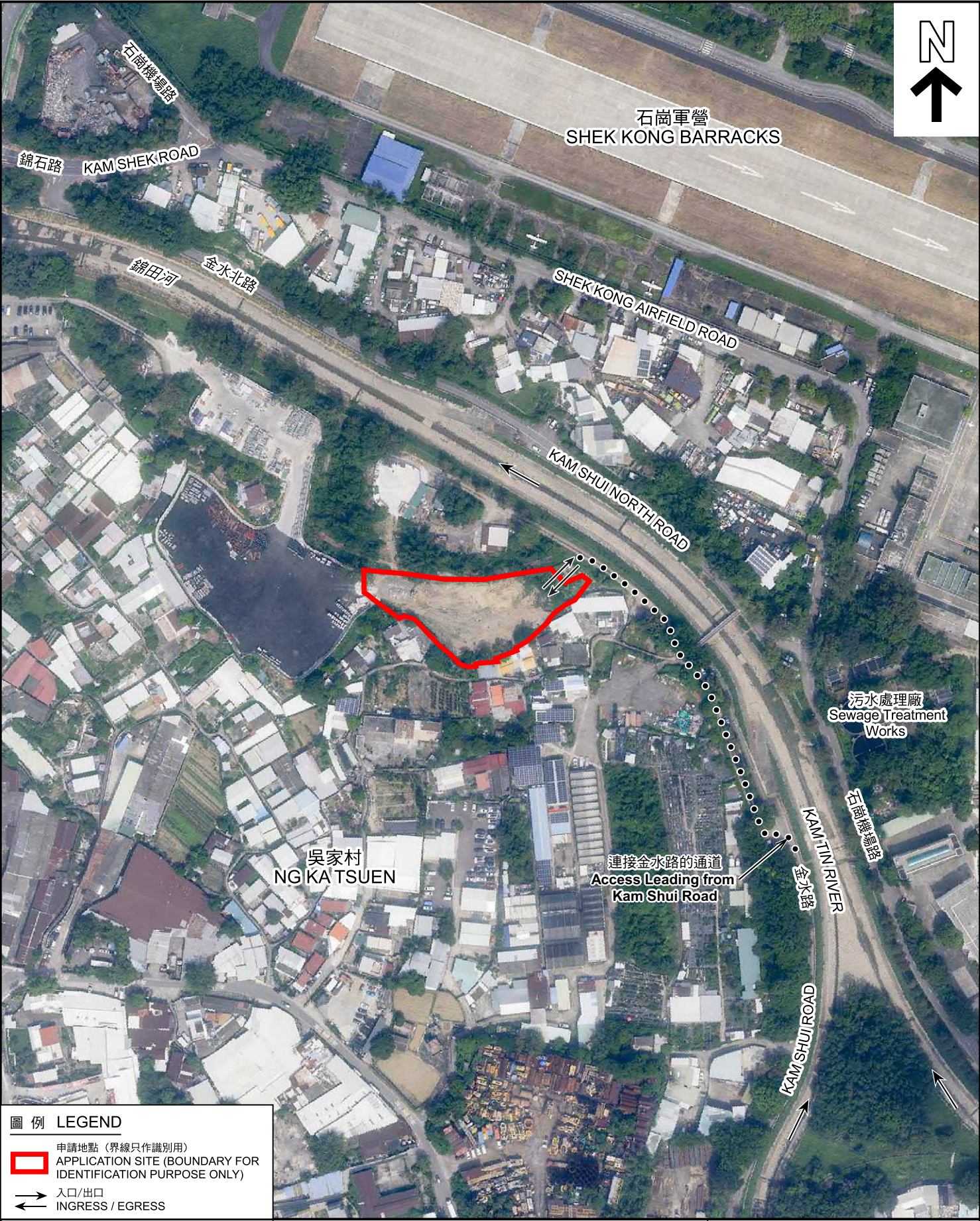
圖 PLAN  
A-1

本摘要圖於2025年4月16日擬備，  
所根據的資料為於2018年12月11日  
核准的分區計劃大綱圖編號 S/YL-KTS/15  
EXTRACT PLAN PREPARED ON 16.4.2025  
BASED ON OUTLINE ZONING PLAN No.  
S/YL-KTS/15 APPROVED ON 11.12.2018









**圖例 LEGEND**

申請地點 (界線只作識別用)  
APPLICATION SITE (BOUNDARY FOR IDENTIFICATION PURPOSE ONLY)

入口/出口  
INGRESS / EGRESS

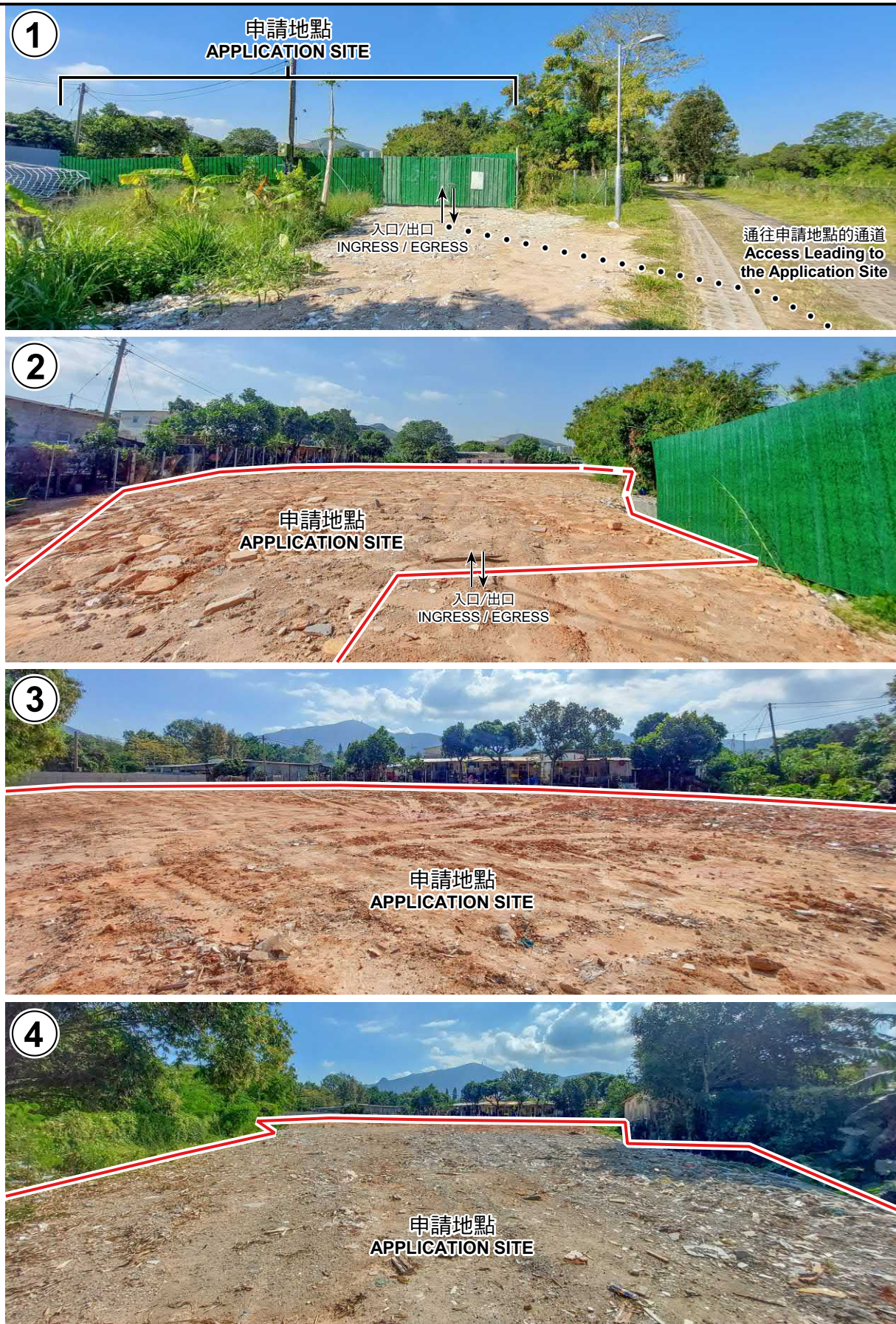
本摘要圖於2025年4月7日擬備，  
所根據的資料為地政總署於2023年10月5日  
拍得的航攝照片編號 E209776C  
EXTRACT PLAN PREPARED ON 7.4.2025  
BASED ON AERIAL PHOTO No.  
E209776C TAKEN ON 5.10.2023  
BY LANDS DEPARTMENT

**航攝照片 AERIAL PHOTO**

擬議臨時商店及服務行業(五金雜貨及建築材料零售店)連附屬設施(為期5年)  
新界元朗丈量約份第106約地段第1296號、第1298號、  
第1299號、第1300號及第1301號和毗連政府土地  
PROPOSED TEMPORARY SHOP AND SERVICES  
(RETAIL SHOP FOR HARDWARE GROCERIES AND CONSTRUCTION MATERIALS)  
WITH ANCILLARY FACILITIES FOR A PERIOD OF 5 YEARS  
LOTS 1296, 1298, 1299, 1300 AND 1301 IN D.D. 106 AND  
ADJOINING GOVERNMENT LAND, YUEN LONG, NEW TERRITORIES

<b>規劃署</b> <b>PLANNING</b> <b>DEPARTMENT</b>		
參考編號 REFERENCE No. A/YL-KTS/1044	圖 PLAN A-3	





申請地點界線只作識別用 APPLICATION SITE BOUNDARY FOR IDENTIFICATION PURPOSE ONLY

### 實地照片 SITE PHOTOS

本圖於2025年4月7日擬備，所根據的資料為攝於2024年12月3日的實地照片  
PLAN PREPARED ON 7.4.2025  
BASED ON SITE PHOTOS  
TAKEN ON 3.12.2024

擬議臨時商店及服務行業(五金雜貨及建築材料零售店)連附屬設施(為期5年)  
新界元朗丈量約份第106約地段第1296號、第1298號、  
第1299號、第1300號及第1301號和毗連政府土地  
PROPOSED TEMPORARY SHOP AND SERVICES  
(RETAIL SHOP FOR HARDWARE GROCERIES AND CONSTRUCTION MATERIALS)  
WITH ANCILLARY FACILITIES FOR A PERIOD OF 5 YEARS  
LOTS 1296, 1298, 1299, 1300 AND 1301 IN D.D. 106 AND  
ADJOINING GOVERNMENT LAND, YUEN LONG, NEW TERRITORIES

規劃署  
PLANNING  
DEPARTMENT



參考編號  
REFERENCE No.  
A/YL-KTS/1044

圖 PLAN  
A-4