

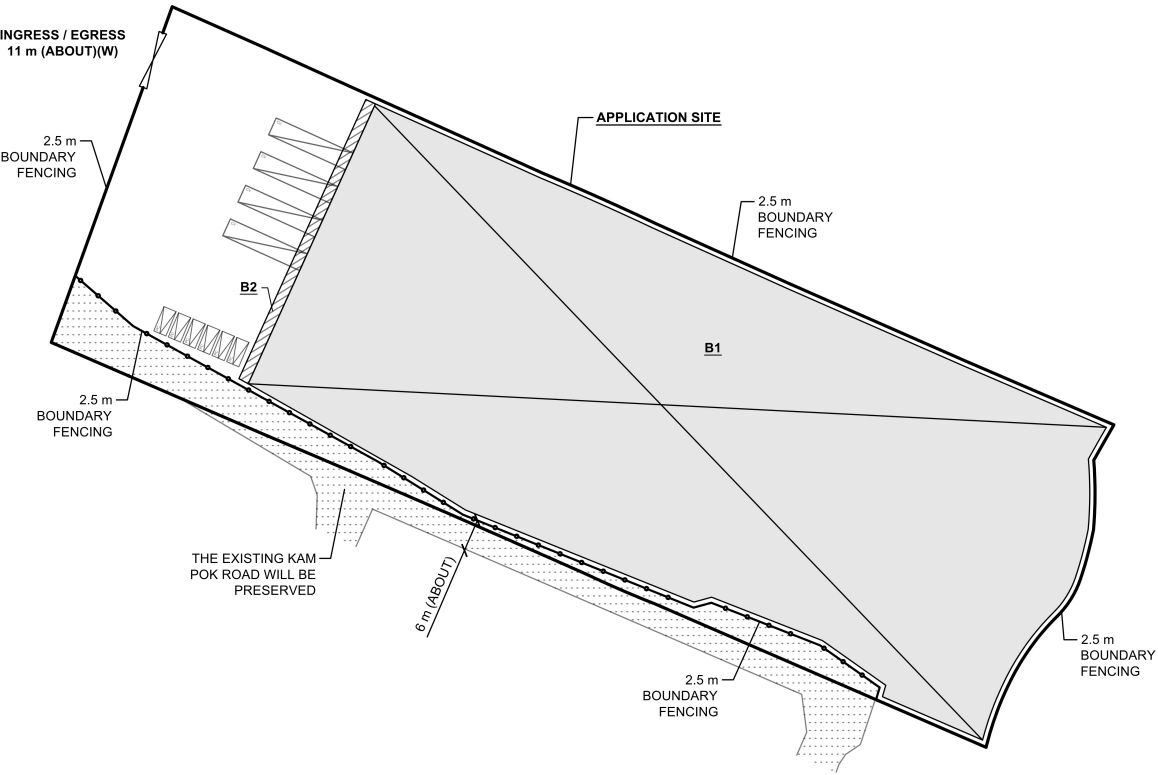
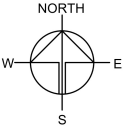
(摘錄自申請人於 5. 3. 2025 呈交的申請書)
 (Extract from Applicant's
 Submission of 5.3.2025)

參考編號
 REFERENCE No.
 A/YL-NSW/343

繪圖
 DRAWING
 A - 1

| DEVELOPMENT PARAMETERS | | |
|------------------------|-------------------------|---------|
| APPLICATION SITE AREA | : 12,980 m ² | (ABOUT) |
| COVERED AREA | : 9,600 m ² | (ABOUT) |
| UNCOVERED AREA | : 3,380 m ² | (ABOUT) |
| PLOT RATIO | : 1.47 | (ABOUT) |
| SITE COVERAGE | : 74 % | (ABOUT) |
| NO. OF STRUCTURE | : 2 | |
| DOMESTIC GFA | : N/A | |
| NON-DOMESTIC GFA | : 19,084 m ² | (ABOUT) |
| TOTAL GFA | : 19,084 m ² | (ABOUT) |
| BUILDING HEIGHT | : 7 m - 11 m | (ABOUT) |
| NO. OF STOREY | : 1 - 2 | |

| STRUCTURE | USE | COVERED AREA | GROSS FLOOR AREA | BUILDING HEIGHT |
|-----------|--|------------------------------|-------------------------------|------------------------|
| B1 | WAREHOUSE FOR STORAGE OF VEHICLES | 9,484 m ² (ABOUT) | 18,968 m ² (ABOUT) | 11 m (ABOUT)(2-STOREY) |
| B2 | SITE OFFICE, WASHROOM RAIN SHELTER FOR LUL ACTIVITIES | 116 m ² (ABOUT) | 116 m ² (ABOUT) | 7 m (ABOUT)(1-STOREY) |
| TOTAL | | 9,600 m ² (ABOUT) | 19,084 m ² (ABOUT) | |



| PARKING AND LOADING / UNLOADING PROVISIONS | |
|--|------------------------|
| NO. OF PRIVATE CAR PARKING SPACE | : 6 |
| DIMENSION OF PARKING SPACE | : 5 m (L) x 2.5 m (W) |
| NO. OF LUL SPACE FOR CONTAINER VEHICLE | : 4 |
| DIMENSION OF LUL SPACE | : 16 m (L) x 3.5 m (W) |

| LEGEND | |
|--------|-------------------------------|
| | APPLICATION SITE |
| | STRUCTURE (ENCLOSED) |
| | STRUCTURE (CANOPY) |
| | PARKING SPACE (PRIVATE CAR) |
| | LUL SPACE (CONTAINER VEHICLE) |
| | INGRESS / EGRESS |

PLANNING CONSULTANT
TAI WAH | DEVELOPMENT CONSULTANTS LIMITED

PROJECT
PROPOSED WAREHOUSE (EXCLUDING DANGEROUS GOODS GODOWN) WITH ANCILLARY FACILITIES FOR A PERIOD OF 3 YEARS AND ASSOCIATED FILLING OF LAND

SITE LOCATION
LOTS 3723 S.B ss.1 (PART) AND 3723 S.B ss.2 (PART) IN D.D. 104, TAI SANG WAI, YUEN LONG, NEW TERRITORIES

SCALE
1:1500 @ A4

DRAWN BY
MN

DATE
15.4.2025

CHECKED BY

DATE

APPROVED BY

DATE

DWG. TITLE
LAYOUT PLAN

DWG NO.
PLAN 1

VER.
002

(摘錄自申請人於28. 4. 2025呈交的進一步資料)
(Extract from Applicant's Further Information Submitted on 28.4.2025)

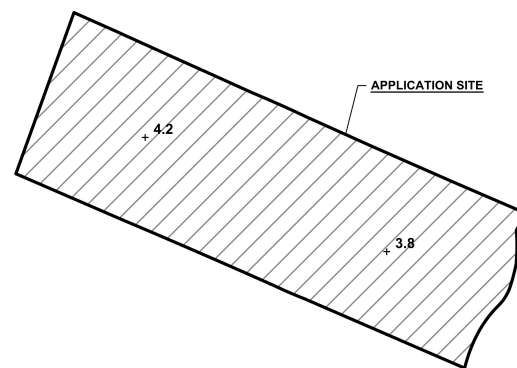
參考編號
REFERENCE No.
A/YL-NSW/343

繪圖
DRAWING
A - 2

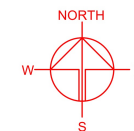


PROPOSED FILLING OF LAND AND POND

| | | |
|-------------------------------|---|---------|
| APPLICATION SITE AREA | : 12,980 m ² | (ABOUT) |
| COVERED BY STRUCTURE | : 9,600 m ² | (ABOUT) |
| PROPOSED FILLING OF LAND AREA | : 12,980 m ² | (ABOUT) |
| DEPTH OF LAND FILLING AREA | : NOT MORE THAN 0.2 m | |
| PROPOSED SITE LEVEL | : +3.8 mPD - +4.2 mPD | (ABOUT) |
| MATERIAL OF LAND FILLING | : CONCRETE | |
| USE | : PARKING AND LOADING / UNLOADING SPACE, SITE FORMATION OF STRUCTURE, CIRCULATION AREA AND KAM POK ROAD | |



*SITE LEVELS ARE FOR REFERENCE ONLY.
EXACT SITE LEVELS ARE SUBJECT TO DETAILED SURVEY.



PLANNING CONSULTANT

TAI WAH | DEVELOPMENT CONSULTANTS LIMITED

PROJECT

PROPOSED WAREHOUSE (EXCLUDING DANGEROUS GOODS GODOWN) WITH ANCILLARY FACILITIES FOR A PERIOD OF 3 YEARS AND ASSOCIATED FILLING OF LAND

SITE LOCATION

LOTS 3723 S.B ss.1 (PART) AND 3723 S.B ss.2 (PART) IN D.D. 104, TAI SANG WAI, YUEN LONG, NEW TERRITORIES

SCALE

1:2000 / 2500 @ A4

DRAWN BY

MN

DATE

REVISD BY

DATE

APPROVED BY

DATE

DWG. TITLE

FILLING OF LAND

DWG NO.

PLAN 2

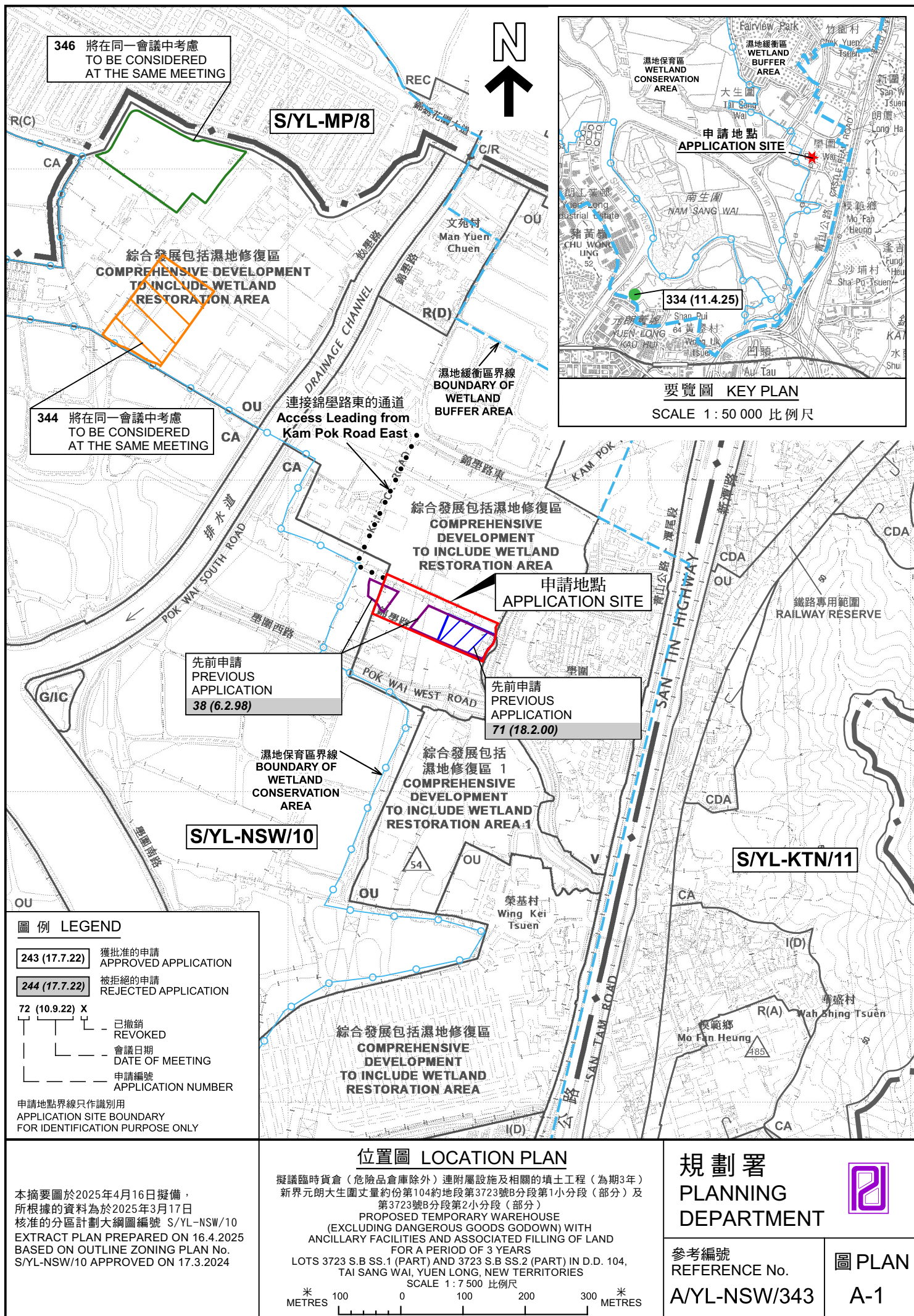
VER.

002

(摘錄自申請人於28. 4. 2025呈交的進一步資料)
(Extract from Applicant's Further Information Submitted on 28.4.2025)

參考編號
REFERENCE No.
A/YL-NSW/343

繪圖
DRAWING
A - 3





圖例 LEGEND

 申請地點（界線只作識別用）
APPLICATION SITE (BOUNDARY FOR IDENTIFICATION PURPOSE ONLY)

本摘要圖於2025年3月31日擬備，
所根據的資料為地政總署於2024年3月17日
拍得的航攝照片編號 E219477C
EXTRACT PLAN PREPARED ON 31.3.2025
BASED ON AERIAL PHOTO No.
E219477C TAKEN ON 17.3.2024
BY LANDS DEPARTMENT

航攝照片 AERIAL PHOTO

擬議臨時貨倉（危險品倉庫除外）連附屬設施及相關的填土工程（為期3年）
新界元朗大生圍丈量約份第104約地段第3723號B分段第1小分段（部分）及
第3723號B分段第2小分段（部分）
PROPOSED TEMPORARY WAREHOUSE
(EXCLUDING DANGEROUS GOODS GODOWN) WITH
ANCILLARY FACILITIES AND ASSOCIATED FILLING OF LAND
FOR A PERIOD OF 3 YEARS
LOTS 3723 S.B SS.1 (PART) AND 3723 S.B SS.2 (PART) IN D.D. 104,
TAI SANG WAI, YUEN LONG, NEW TERRITORIES

| | | |
|---------------------------------------|---------------|---|
| 規劃署 PLANNING DEPARTMENT | |  |
| 參考編號 REFERENCE No. A/YL-NSW/343 | 圖 PLAN A-3 | |

1



2



3



申請地點界線只作識別用 APPLICATION SITE BOUNDARY FOR IDENTIFICATION PURPOSE ONLY

實地照片 SITE PHOTOS

擬議臨時貨倉（危險品倉庫除外）連附屬設施及相關的填土工程（為期3年）
 新界元朗大生圍丈量約份第104約地段第3723號B分段第1小分段（部分）及
 第3723號B分段第2小分段（部分）
 PROPOSED TEMPORARY WAREHOUSE
 (EXCLUDING DANGEROUS GOODS GODOWN) WITH
 ANCILLARY FACILITIES AND ASSOCIATED FILLING OF LAND
 FOR A PERIOD OF 3 YEARS
 LOTS 3723 S.B SS.1 (PART) AND 3723 S.B SS.2 (PART) IN D.D. 104,
 TAI SANG WAI, YUEN LONG, NEW TERRITORIES

規劃署
 PLANNING
 DEPARTMENT



參考編號
 REFERENCE No.
 A/YL-NSW/343

圖 PLAN
 A-4a

本圖於2025年4月9日擬備，所根據的
 資料為攝於2025年3月14日的實地照片
 PLAN PREPARED ON 9.4.2025
 BASED ON SITE PHOTOS
 TAKEN ON 14.3.2025

4



申請地點
APPLICATION SITE

5



申請地點
APPLICATION SITE

申請地點界線只作識別用 APPLICATION SITE BOUNDARY FOR IDENTIFICATION PURPOSE ONLY

實地照片 SITE PHOTOS

擬議臨時貨倉（危險品倉庫除外）連附屬設施及相關的填土工程（為期3年）
新界元朗大生圍丈量約份第104約地段第3723號B分段第1小分段（部分）及
第3723號B分段第2小分段（部分）
PROPOSED TEMPORARY WAREHOUSE
(EXCLUDING DANGEROUS GOODS GODOWN) WITH
ANCILLARY FACILITIES AND ASSOCIATED FILLING OF LAND
FOR A PERIOD OF 3 YEARS
LOTS 3723 S.B SS.1 (PART) AND 3723 S.B SS.2 (PART) IN D.D. 104,
TAI SANG WAI, YUEN LONG, NEW TERRITORIES

規劃署
PLANNING
DEPARTMENT



參考編號
REFERENCE No.
A/YL-NSW/343

圖 PLAN
A-4b

本圖於2025年4月9日擬備，所根據的
資料為攝於2025年3月14日的實地照片
PLAN PREPARED ON 9.4.2025
BASED ON SITE PHOTOS
TAKEN ON 14.3.2025