

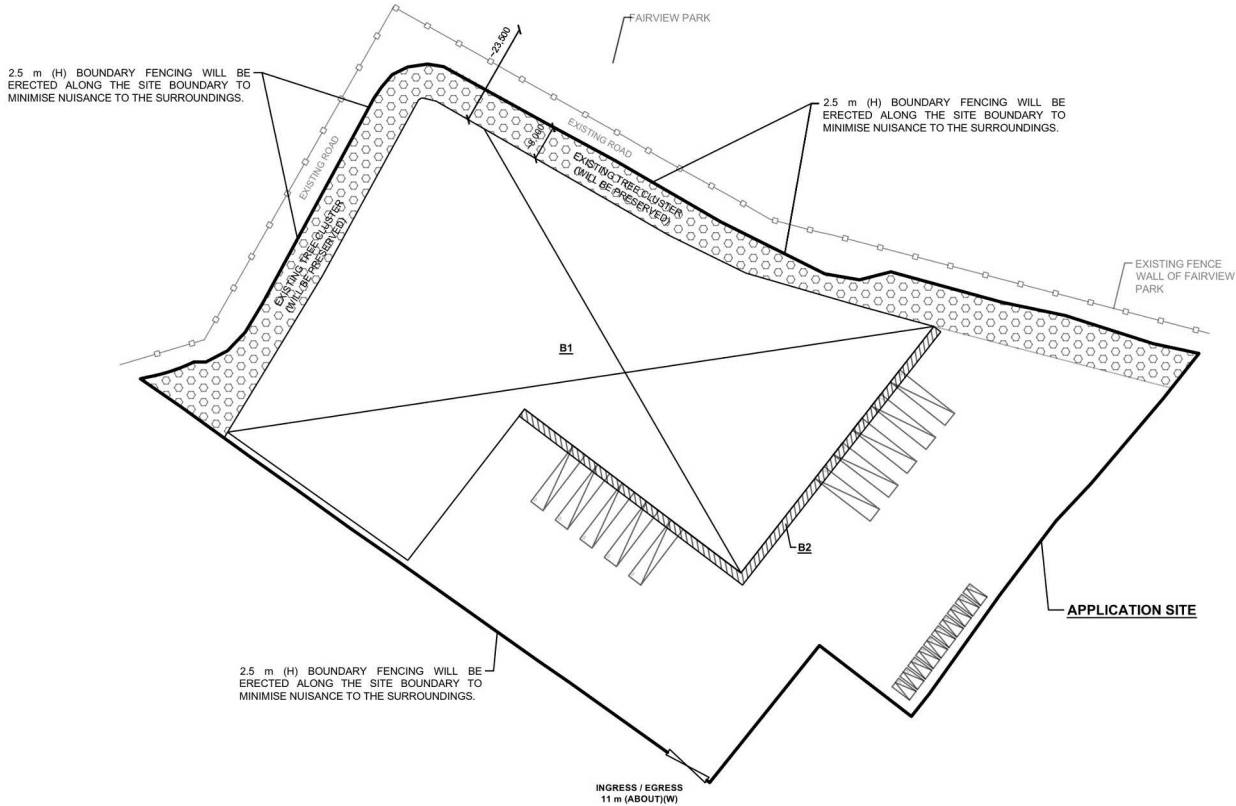
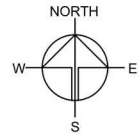
(摘錄自申請人於 20.3.2025 呈交的申請書)
(Extract from Applicant's Submission of 20.3.2025)

參考編號 REFERENCE No. A/YL-NSW/346	繪圖 DRAWING A - 1
---------------------------------------	------------------------

DEVELOPMENT PARAMETERS

APPLICATION SITE AREA	: 19,493 m ²	(ABOUT)
COVERED AREA	: 9,187 m ²	(ABOUT)
UNCOVERED AREA	: 10,306m ²	(ABOUT)
PLOT RATIO	: 0.47	(ABOUT)
SITE COVERAGE	: 47 %	(ABOUT)
NO. OF STRUCTURE	: 2	
DOMESTIC GFA	: N/A	
NON-DOMESTIC GFA	: 9,187 m ²	(ABOUT)
TOTAL GFA	: 9,187 m ²	(ABOUT)
BUILDING HEIGHT	: 6 m - 8.5 m	(ABOUT)
NO. OF STOREY	: 1	

STRUCTURE	USE	COVERED AREA	GROSS FLOOR AREA	BUILDING HEIGHT
B1	WAREHOUSE (EXCLUDING D.G.G.)	8,916 m ² (ABOUT)	8,916 m ² (ABOUT)	8.5 m (ABOUT)(1-STOREY)
B2	SITE OFFICE, WASHROOM RAIN SHELTER FOR L/UL ACTIVITIES	271 m ² (ABOUT)	271 m ² (ABOUT)	6 m (ABOUT)(1-STOREY)
TOTAL		9,187 m ² (ABOUT)	9,187 m ² (ABOUT)	



PARKING AND LOADING / UNLOADING PROVISIONS

NO. OF PRIVATE CAR PARKING SPACE	: 10
DIMENSION OF PARKING SPACE	: 5 m (L) x 2.5 m (W)
NO. OF L/UL SPACE FOR CONTAINER VEHICLE	: 10
DIMENSION OF L/UL SPACE	: 16 m (L) x 3.5 m (W)

LEGEND

	APPLICATION SITE
	STRUCTURE (ENCLOSED)
	STRUCTURE (CANOPY)
	PARKING SPACE (PRIVATE CAR)
	L/UL SPACE (CONTAINER VEHICLE)
	INGRESS / EGRESS

PLANNING CONSULTANT

TAI WAH | DEVELOPMENT CONSULTANTS LIMITED

PROJECT

PROPOSED TEMPORARY WAREHOUSE (EXCLUDING DANGEROUS GOODS GODOWN) WITH ANCILLARY FACILITIES AND ASSOCIATED FILLING OF LAND AND POND FOR A PERIOD OF 3 YEARS

SITE LOCATION

VARIOUS LOTS IN D.D. 104, TAI SANG WAI, YUEN LONG, NEW TERRITORIES

SCALE

1:1000 @ A4

DRAWN BY

MN

DATE

15.4.2025

CHECKED BY

DATE

APPROVED BY

DATE

DWG. TITLE

LAYOUT PLAN

DWG. NO.

PLAN 1

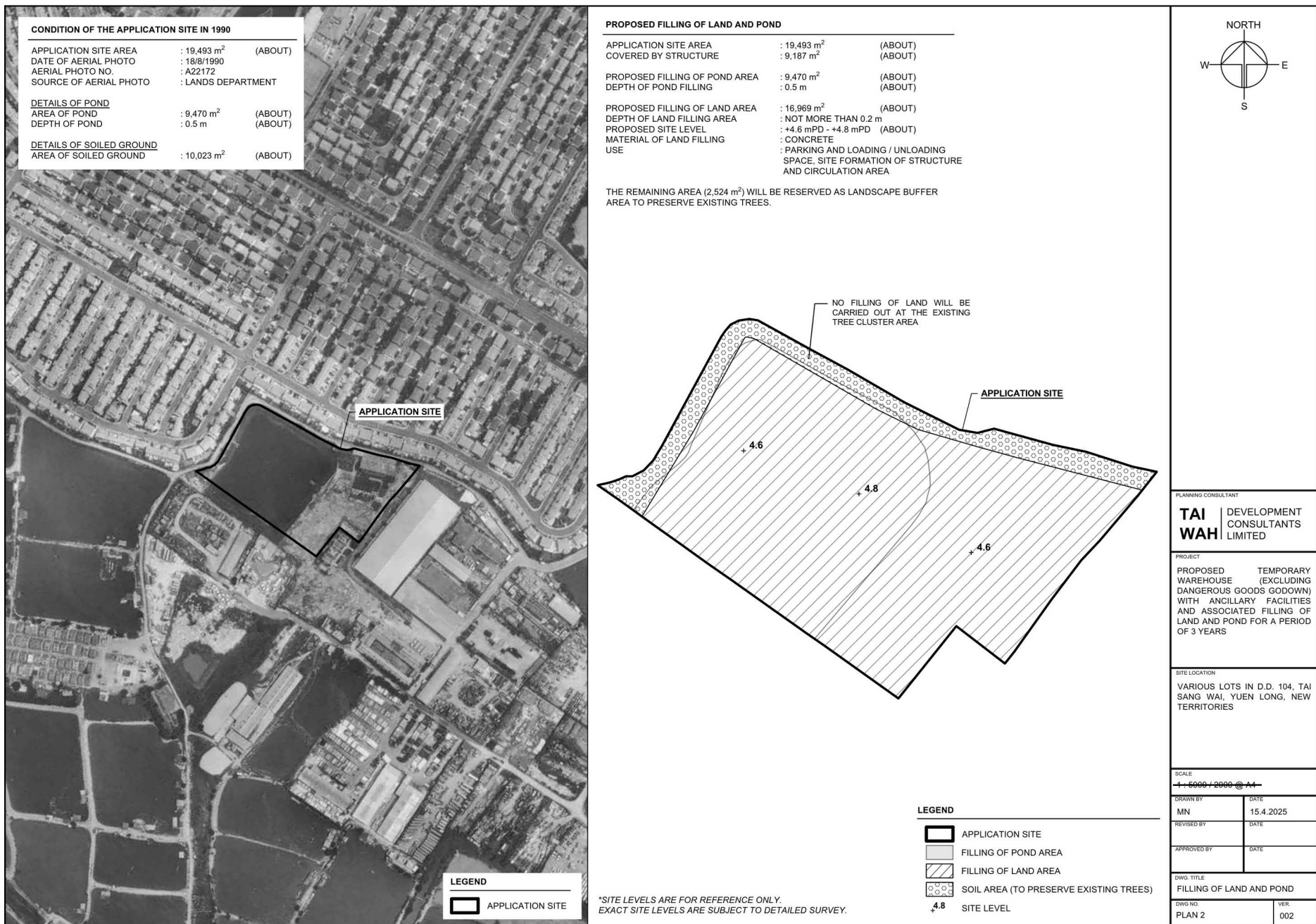
VER.

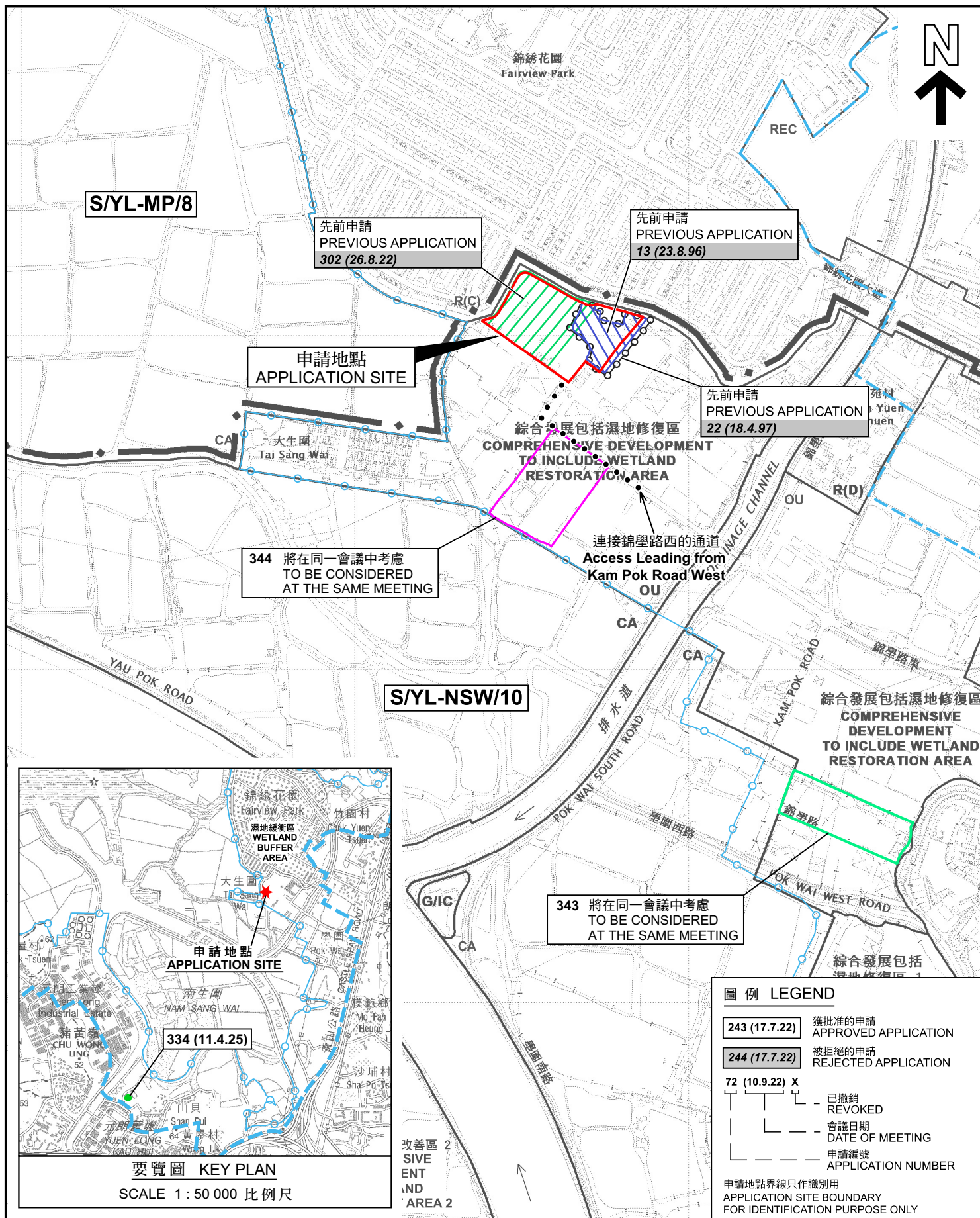
002

(摘錄自申請人於30. 4. 2025呈交的進一步資料)
(Extract from Applicant's Further
Information Submitted on 30.4.2025)

參考編號
REFERENCE No.
A/YL-NSW/346

繪圖
DRAWING
A - 2





本摘要圖於2025年4月16日擬備，所根據的資料為於2025年3月17日核准的分區計劃大綱圖編號 S/YL-NSW/10 EXTRACT PLAN PREPARED ON 16.4.2025 BASED ON OUTLINE ZONING PLAN No. S/YL-NSW/10 APPROVED ON 17.3.2025

位置圖及同類申請 LOCATION PLAN WITH SIMILAR APPLICATIONS

擬議臨時貨倉（危險品倉庫除外）連附屬設施及相關的填土和填塘工程（為期3年）
新界元朗大生圍丈量約份第104約多個地段
PROPOSED TEMPORARY WAREHOUSE (EXCLUDING DANGEROUS GOODS GODOWN) WITH ANCILLARY FACILITIES AND ASSOCIATED FILLING OF LAND AND POND FOR A PERIOD OF 3 YEARS
VARIOUS LOTS IN D.D. 104, TAI SANG WAI, YUEN LONG, NEW TERRITORIES

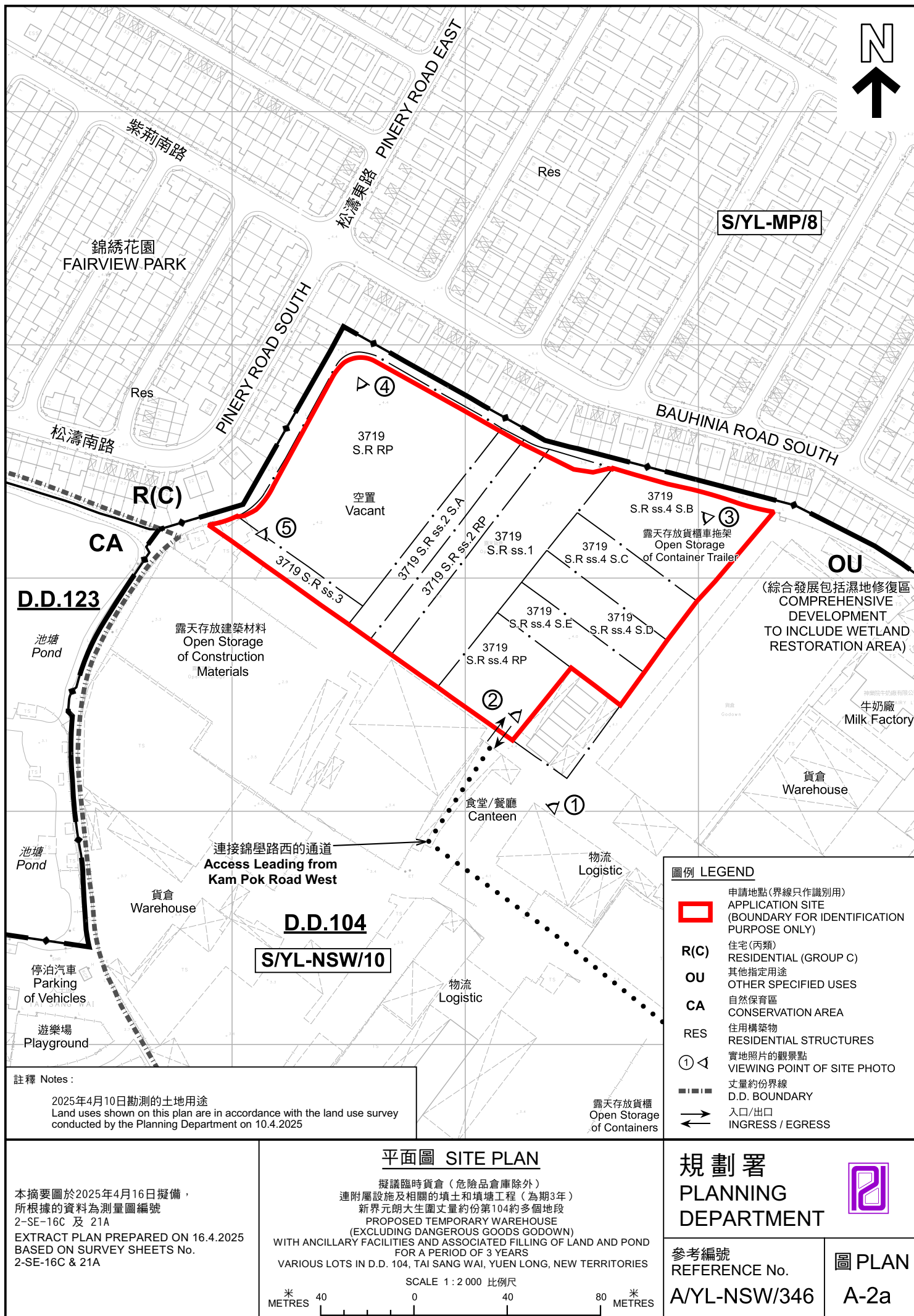
SCALE 1 : 7 500 比例尺
米 100 0 100 200 300 米
METRES

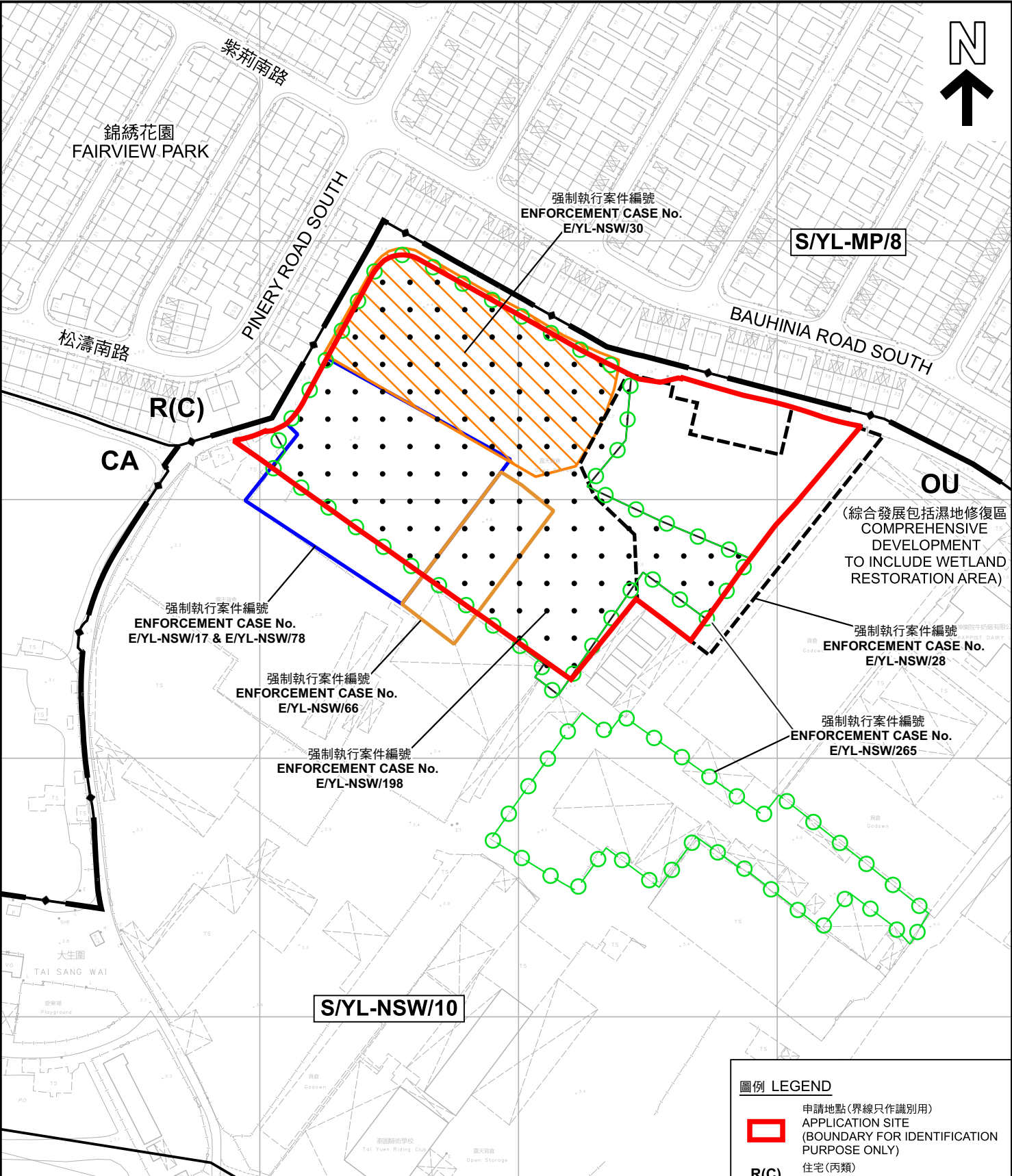
規劃署
PLANNING
DEPARTMENT



參考編號
REFERENCE No.
A/YL-NSW/346

圖 PLAN
A-1





註釋 Notes :
2025年4月10日勘測的土地用途
Land uses shown on this plan are in accordance with the land use survey conducted by the Planning Department on 10.4.2025

圖例 LEGEND

申請地點(界線只作識別用)
APPLICATION SITE
(BOUNDARY FOR IDENTIFICATION
PURPOSE ONLY)

R(C)

住宅(丙類)
RESIDENTIAL (GROUP C)

OU

其他指定用途
OTHER SPECIFIED USES

CA

自然保育區
CONSERVATION AREA

本摘要圖於2025年4月16日擬備，
所根據的資料為測量圖編號
2-SE-21A
EXTRACT PLAN PREPARED ON 16.4.2025
BASED ON SURVEY SHEET No.
2-SE-21A

平面圖 SITE PLAN

擬議臨時貨倉(危險品倉庫除外)
連附屬設施及相關的填土和填塘工程(為期3年)
新界元朗大生圍丈量約份第104約多個地段
PROPOSED TEMPORARY WAREHOUSE
(EXCLUDING DANGEROUS GOODS GODOWN)
WITH ANCILLARY FACILITIES AND ASSOCIATED FILLING OF LAND AND POND
FOR A PERIOD OF 3 YEARS
VARIOUS LOTS IN D.D. 104, TAI SANG WAI, YUEN LONG, NEW TERRITORIES

SCALE 1 : 2 000 比例尺

米 40 0 40 80 米

METRES

規劃署
PLANNING
DEPARTMENT

參考編號
REFERENCE No.
A/YL-NSW/346

圖 PLAN
A-2b



錦綉花園
FAIRVIEW PARK

連接錦學路西的通道
Access Leading from
Kam Pok Road West

大生圍
TAI SANG WAI

錦學路西
KAM POK ROAD WEST

圖例 LEGEND



申請地點 (界線只作識別用)
APPLICATION SITE (BOUNDARY FOR
IDENTIFICATION PURPOSE ONLY)

航攝照片 AERIAL PHOTO

本摘要圖於2025年4月15日擬備，
所根據的資料為地政總署於2024年3月17日
拍得的航攝照片編號
E219384C 和 E219385C
EXTRACT PLAN PREPARED ON 15.4.2025
BASED ON AERIAL PHOTOS No.
E219384C & E219385C TAKEN ON 17.3.2024
BY LANDS DEPARTMENT

擬議臨時貨倉 (危險品倉庫除外)
連附屬設施及相關的填土和填塘工程 (為期3年)
新界元朗大生圍丈量約份第104約多個地段
PROPOSED TEMPORARY WAREHOUSE
(EXCLUDING DANGEROUS GOODS GODOWN)
WITH ANCILLARY FACILITIES AND ASSOCIATED FILLING OF LAND AND POND
FOR A PERIOD OF 3 YEARS
VARIOUS LOTS IN D.D. 104, TAI SANG WAI, YUEN LONG, NEW TERRITORIES

規劃署
PLANNING
DEPARTMENT

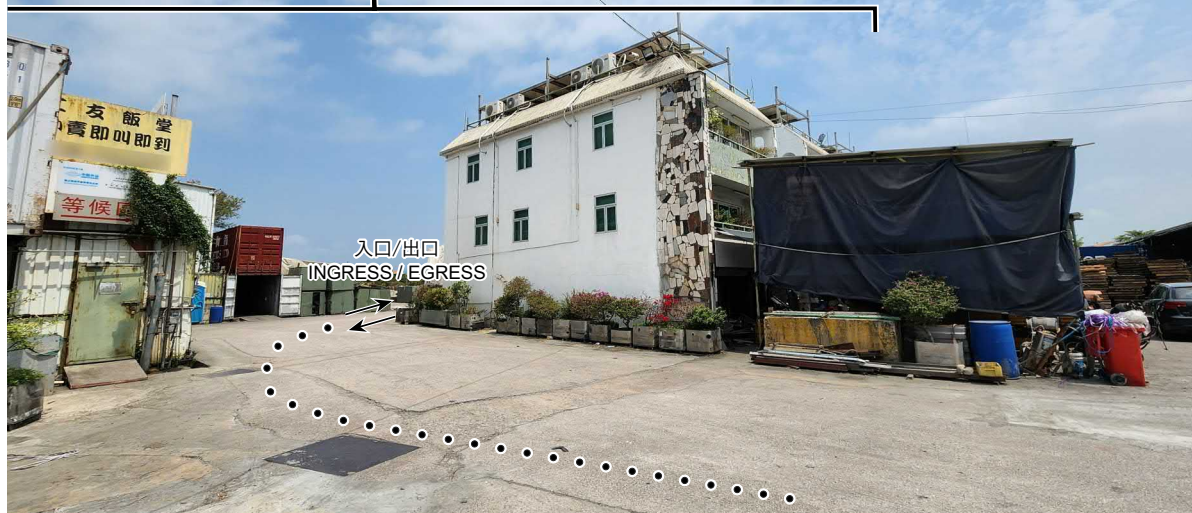


參考編號
REFERENCE No.
A/YL-NSW/346

圖 PLAN
A-3

1

申請地點
APPLICATION SITE



2



3



申請地點界線只作識別用 APPLICATION SITE BOUNDARY FOR IDENTIFICATION PURPOSE ONLY

實地照片 SITE PHOTOS

本圖於2025年4月15日擬備，所根據的資料為攝於2025年4月10日的實地照片
PLAN PREPARED ON 15.4.2025
BASED ON SITE PHOTOS
TAKEN ON 10.4.2025

擬議臨時貨倉（危險品倉庫除外）
連附屬設施及相關的填土和填塘工程（為期3年）
新界元朗大生圍丈量約份第104約多個地段
PROPOSED TEMPORARY WAREHOUSE
(EXCLUDING DANGEROUS GOODS GODOWN)
WITH ANCILLARY FACILITIES AND ASSOCIATED FILLING OF LAND AND POND
FOR A PERIOD OF 3 YEARS
VARIOUS LOTS IN D.D. 104, TAI SANG WAI, YUEN LONG, NEW TERRITORIES

規劃署
PLANNING
DEPARTMENT



參考編號
REFERENCE No.
A/YL-NSW/346

圖 PLAN
A-4a

4



5



申請地點界線只作識別用 APPLICATION SITE BOUNDARY FOR IDENTIFICATION PURPOSE ONLY

實地照片 SITE PHOTOS

本圖於2025年4月15日擬備，所根據的資料為攝於2025年4月10日的實地照片
PLAN PREPARED ON 15.4.2025
BASED ON SITE PHOTOS
TAKEN ON 10.4.2025

擬議臨時貨倉（危險品倉庫除外）
連附屬設施及相關的填土和填塘工程（為期3年）
新界元朗大生圍丈量約份第104約多個地段
PROPOSED TEMPORARY WAREHOUSE
(EXCLUDING DANGEROUS GOODS GODOWN)
WITH ANCILLARY FACILITIES AND ASSOCIATED FILLING OF LAND AND POND
FOR A PERIOD OF 3 YEARS
VARIOUS LOTS IN D.D. 104, TAI SANG WAI, YUEN LONG, NEW TERRITORIES

規劃署
PLANNING
DEPARTMENT



參考編號
REFERENCE No.
A/YL-NSW/346

圖 PLAN
A-4b