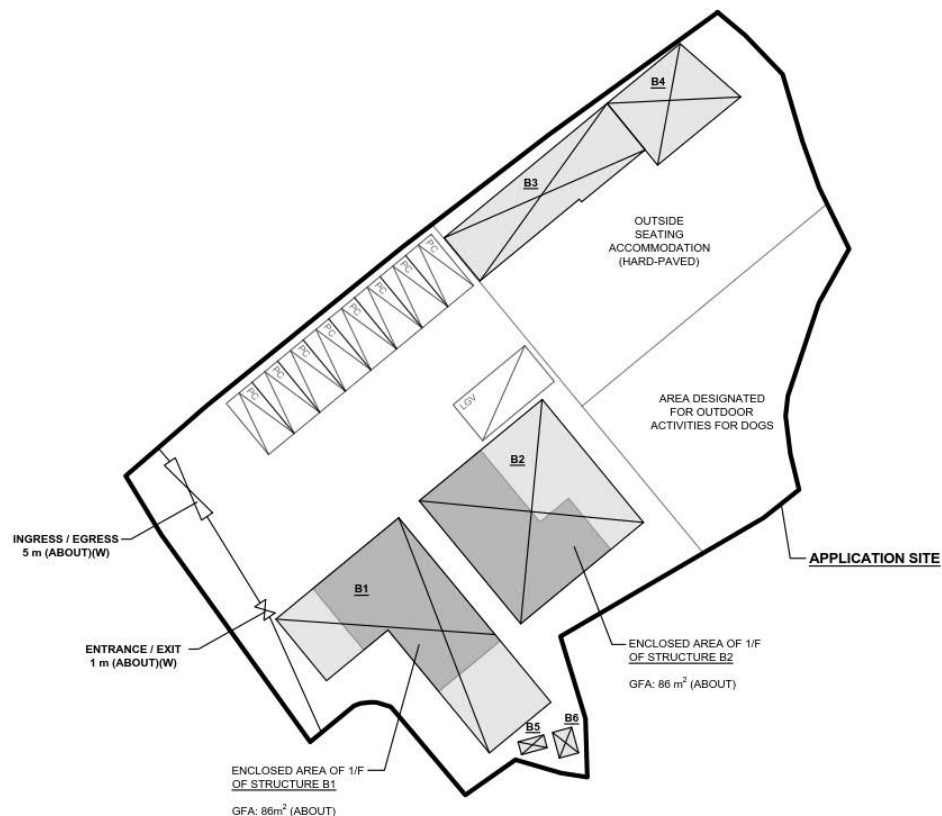
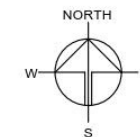


# DEVELOPMENT PARAMETERS

APPLICATION SITE AREA	: 1,757 m <sup>2</sup>	(ABOUT)
COVERED AREA	: 408 m <sup>2</sup>	(ABOUT)
UNCOVERED AREA	: 1,349 m <sup>2</sup>	(ABOUT)
PLOT RATIO	: 0.33	(ABOUT)
SITE COVERAGE	: 23%	(ABOUT)
NO. OF STRUCTURE	: 6	
DOMESTIC GFA	: NOT APPLICABLE	
NON-DOMESTIC GFA	: 580 m <sup>2</sup>	(ABOUT)
TOTAL GFA	: 580 m <sup>2</sup>	(ABOUT)
BUILDING HEIGHT	: 2.5 - 8 m	(ABOUT)
NO. OF STOREY	: 1 - 2	

STRUCTURE	USE	COVERED AREA	GROSS FLOOR AREA	BUILDING HEIGHT
B1 (G/F)	ANIMAL BOARDING ESTABLISHMENT, AND WASHROOM	144 m <sup>2</sup> (ABOUT)	144 m <sup>2</sup> (ABOUT)	8 m (ABOUT)(2-STOREY)
B2 (1/F)	OFFICE AND WASHROOM	144 m <sup>2</sup> (ABOUT)	86 m <sup>2</sup> (ABOUT)	8 m (ABOUT)(2-STOREY)
B3 (G/F)	ANIMAL BOARDING ESTABLISHMENT, WASHROOM	144 m <sup>2</sup> (ABOUT)	144 m <sup>2</sup> (ABOUT)	8 m (ABOUT)(2-STOREY)
B4 (1/F)	OFFICE AND WASHROOM	69m <sup>2</sup> (ABOUT)	86 m <sup>2</sup> (ABOUT)	3.5 m (ABOUT)(1-STOREY)
B5	EATING PLACE AND STORAGE OF GOODS	46 m <sup>2</sup> (ABOUT)	46 m <sup>2</sup> (ABOUT)	3.5 m (ABOUT)(1-STOREY)
B6	WATER TANK	2 m <sup>2</sup> (ABOUT)	2 m <sup>2</sup> (ABOUT)	2.5 m (ABOUT)(1-STOREY)
B6	METER ROOM	3 m <sup>2</sup> (ABOUT)	3 m <sup>2</sup> (ABOUT)	2.5 m (ABOUT)(1-STOREY)
TOTAL		408 m <sup>2</sup> (ABOUT)	580 m <sup>2</sup> (ABOUT)	



## PARKING AND LOADING/UNLOADING PROVISIONS

NO. OF PRIVATE CAR PARKING SPACE	: 8
DIMENSION OF PARKING SPACE	: 5m (L) X 2.5m (W)
NO. OF L/U SPACE FOR LIGHT GOODS VEHICLE	: 1
DIMENSION OF L/U SPACE	: 7m (L) X 3.5m (W)

## LEGEND

	APPLICATION SITE
	STRUCTURE
	PARKING SPACE (PRIVATE CAR)
	L/U SPACE (LIGHT GOODS VEHICLE)
	INGRESS / EGRESS

## PLANNING CONSULTANT



## PROJECT

PROPOSED ANIMAL BOARDING ESTABLISHMENT AND EATING PLACE WITH ANCILLARY FACILITIES FOR A PERIOD OF 3 YEARS AND ASSOCIATED FILLING OF LAND

## SITE LOCATION

LOT 1992 RP IN D.D. 106, PAT HEUNG, YUEN LONG, NEW TERRITORIES

## SCALE

1:500 @ A4

DRAWN BY	DATE
MN	26.11.2024
CHECKED BY	DATE
APPROVED BY	DATE

## DWG. TITLE

LAYOUT PLAN

DWG NO.	VER.
PLAN 4	001

(摘錄自申請人於 2. 1. 2025 呈交的申請書)  
(Extract from Applicant's Submission of 2.1.2025)

參考編號  
REFERENCE No.  
A/YL-KTS/1052

繪圖  
DRAWING  
A - 1

# PAVED RATIO OF THE APPLICATION SITE

APPLICATION SITE AREA : 1,757 m<sup>2</sup> (ABOUT)

## PROPOSED HARD-PAVED AREA

AREA : 381 m<sup>2</sup> (ABOUT)  
 EXISTING SITE LEVEL : +15.4 mPD (ABOUT)  
 DEPTH OF FILLING : NOT MORE THAN 0.2 m  
 PAVED MATERIAL : CONCRETE  
 USE : OUTSIDE SEATING ACCOMMODATION

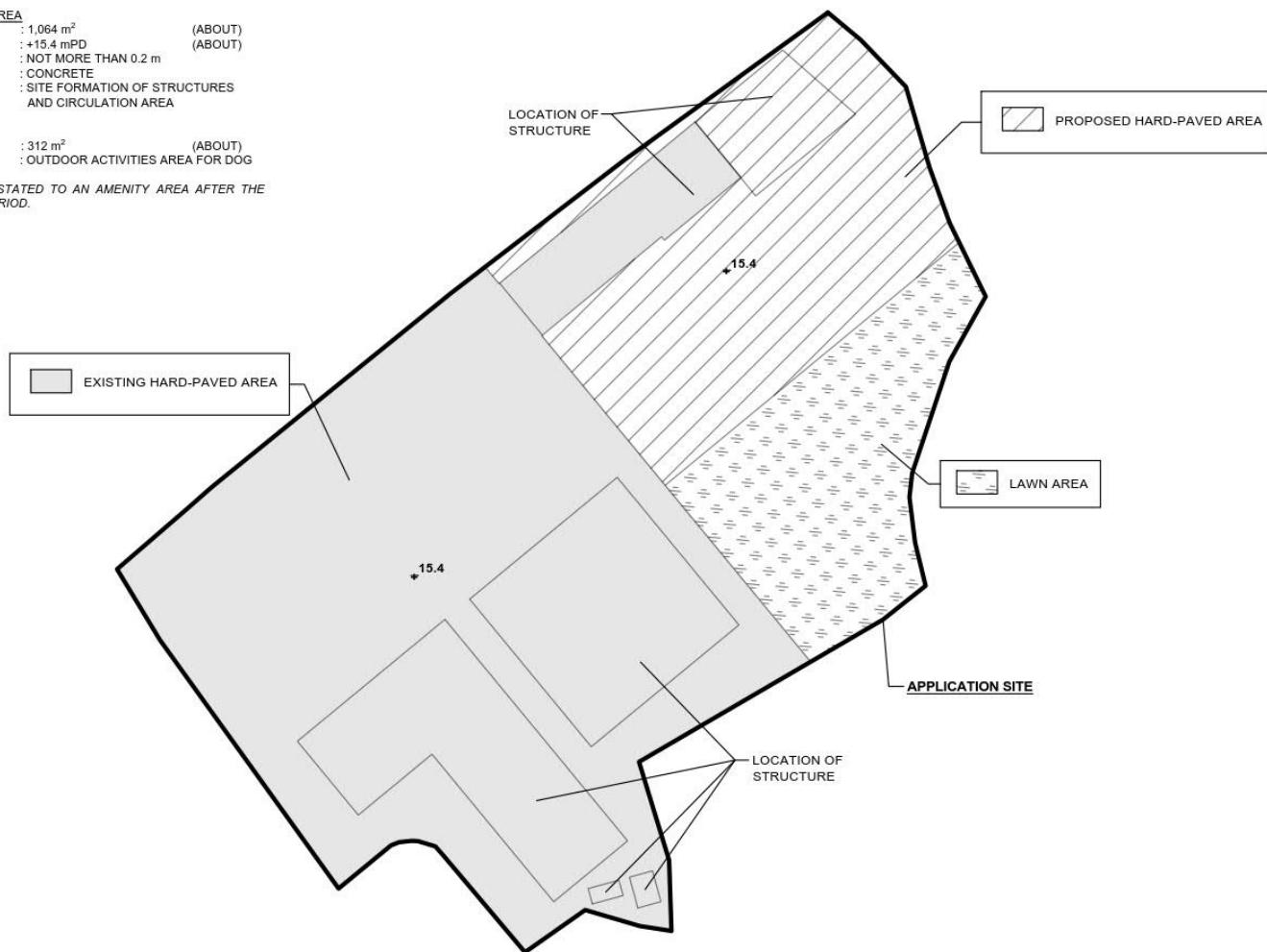
## EXISTING HARD-PAVED AREA

AREA : 1,064 m<sup>2</sup> (ABOUT)  
 EXISTING SITE LEVEL : +15.4 mPD (ABOUT)  
 DEPTH OF FILLING : NOT MORE THAN 0.2 m  
 PAVED MATERIAL : CONCRETE  
 USE : SITE FORMATION OF STRUCTURES AND CIRCULATION AREA

## LAWN AREA

AREA : 312 m<sup>2</sup> (ABOUT)  
 USE : OUTDOOR ACTIVITIES AREA FOR DOG

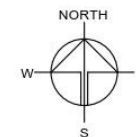
THE SITE WILL BE REINSTATED TO AN AMENITY AREA AFTER THE PLANNING APPROVAL PERIOD.



SITE BOUNDARY FOR IDENTIFICATION PURPOSE.

## LEGEND

APPLICATION SITE  
 +14.7 SITE LEVELS



PLANNING CONSULTANT



PROJECT

PROPOSED ANIMAL BOARDING ESTABLISHMENT AND EATING PLACE WITH ANCILLARY FACILITIES FOR A PERIOD OF 3 YEARS AND ASSOCIATED FILLING OF LAND

SITE LOCATION

LOT 1892 RP IN D.D. 106, PAT HEUNG, YUEN LONG, NEW TERRITORIES

SCALE

1:400 @ A4

DRAWN BY

MN

DATE

26.11.2024

REVISED BY

DATE

APPROVED BY

DATE

DWG. TITLE

FILLING OF LAND AREA

DWG NO.

PLAN 5

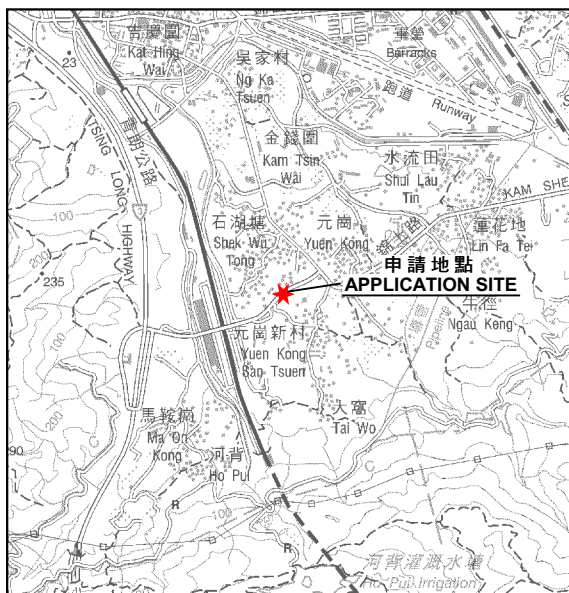
VER.

001

(摘錄自申請人於 2.1.2025 呈交的申請書)  
 (Extract from Applicant's  
 Submission of 2.1.2025)

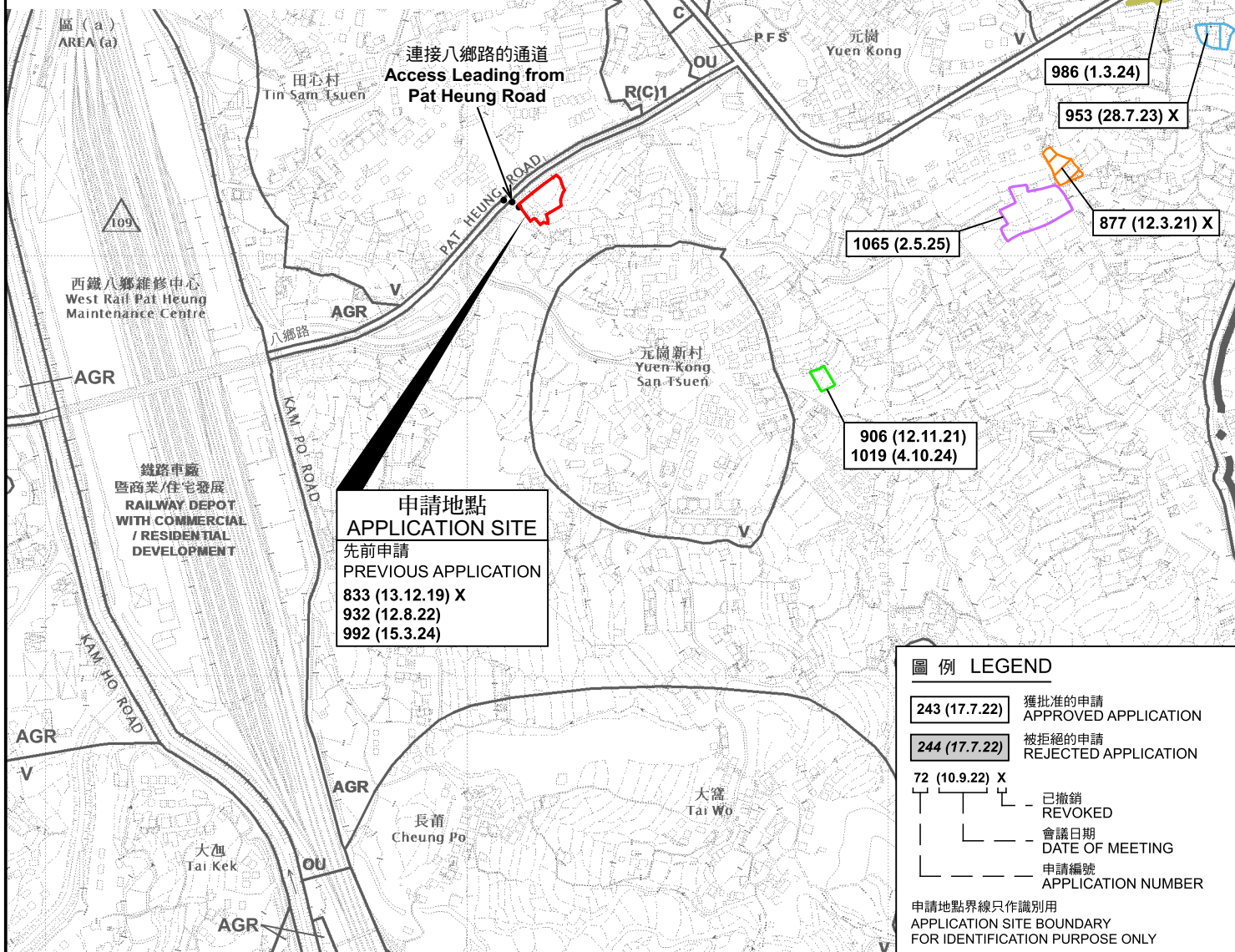
參考編號  
 REFERENCE No.  
 A/YL-KTS/1052

繪圖  
 DRAWING  
 A - 2



要覽圖 KEY PLAN

SCALE 1 : 50 000 比例尺



位置圖 LOCATION PLAN

本摘要圖於2025年5月7日擬備，  
所根據的資料為於2018年12月11日  
核准的分區計劃大綱圖編號 S/YL-KTS/15  
EXTRACT PLAN PREPARED ON 7.5.2025  
BASED ON OUTLINE ZONING PLAN No.  
S/YL-KTS/15 APPROVED ON 11.12.2018

擬議臨時動物寄養所及食肆連附屬設施(為期3年)及相關的填土工程  
新界元朗八鄉丈量約份第106約地段第1892號餘段  
PROPOSED TEMPORARY ANIMAL BOARDING ESTABLISHMENT AND  
EATING PLACE WITH ANCILLARY FACILITIES FOR  
A PERIOD OF 3 YEARS AND ASSOCIATED FILLING OF LAND  
LOT 1892 RP IN D.D. 106, PAT HEUNG, YUEN LONG, NEW TERRITORIES

SCALE 1 : 7 500 比例尺  
米 METRES 100 0 100 200 300 米 METRES

圖例 LEGEND

- 243 (17.7.22) 獲批准的申請 APPROVED APPLICATION
- 244 (17.7.22) 被拒絕的申請 REJECTED APPLICATION
- 72 (10.9.22) X 已撤銷 REVOKED
- | 會議日期 DATE OF MEETING
- | 申請編號 APPLICATION NUMBER

申請地點界線只作識別用  
APPLICATION SITE BOUNDARY  
FOR IDENTIFICATION PURPOSE ONLY

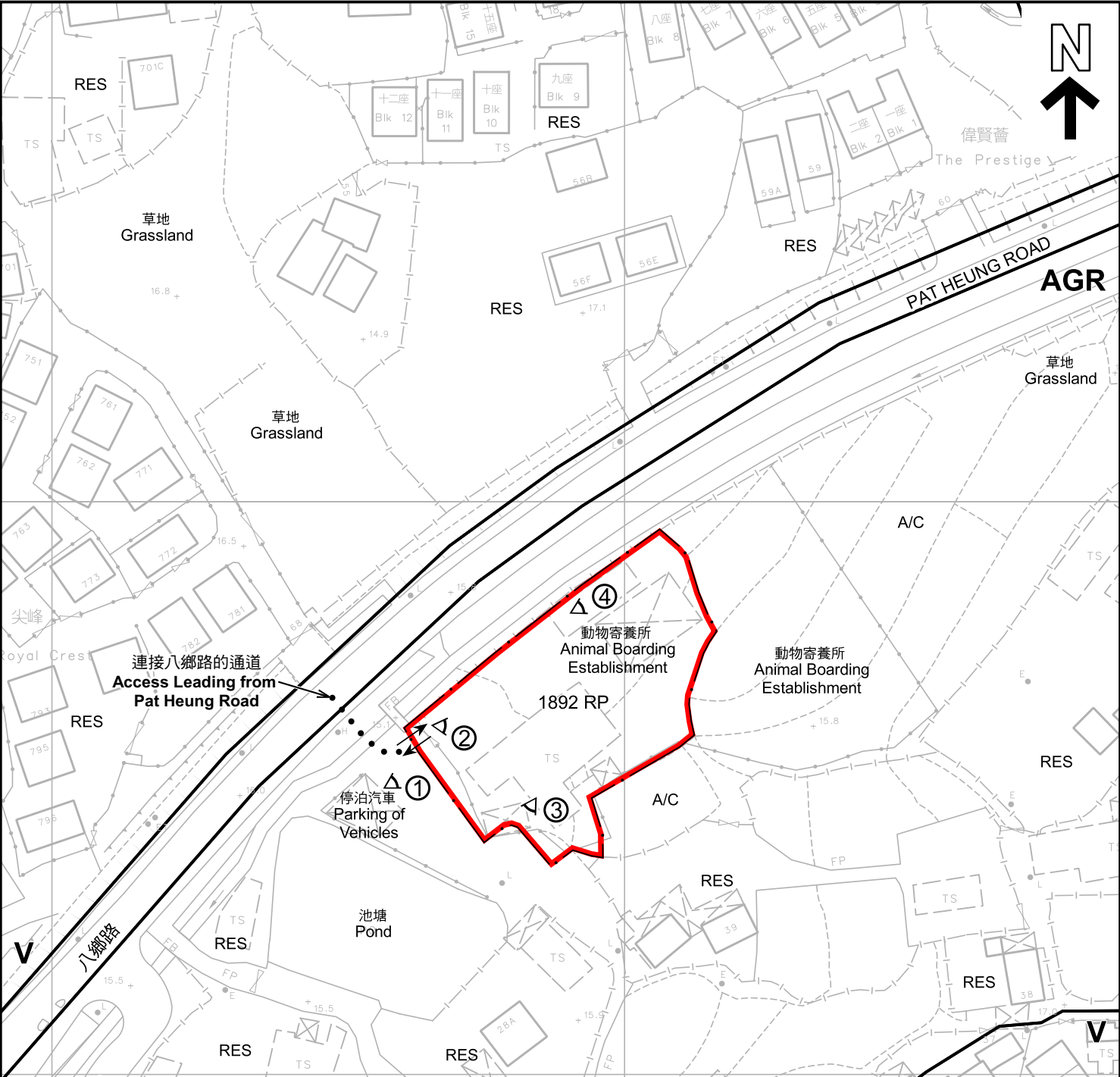
規劃署  
PLANNING  
DEPARTMENT



參考編號  
REFERENCE No.  
A/YL-KTS/1052

圖 PLAN  
A-1





**圖例 LEGEND**

- 申請地點(界線只作識別用)  
APPLICATION SITE (BOUNDARY FOR IDENTIFICATION PURPOSE ONLY)
- V** 鄉村式發展  
VILLAGE TYPE DEVELOPMENT
- AGR** 農業  
AGRICULTURE
- RES** 住用構築物  
RESIDENTIAL STRUCTURES
- A/C** 常耕農地  
CULTIVATED AGRICULTURAL LAND
- ① ◁ 實地照片的觀景點  
VIEWING POINT OF SITE PHOTO
- ↔ 入口/出口  
INGRESS / EGRESS

**註釋 Notes:**

2025年1月14日勘測的土地用途  
Land uses shown on this plan are in accordance with the land use survey conducted by the Planning Department on 14.1.2025

**平面圖 SITE PLAN**

擬議臨時動物寄養所及食肆連附屬設施(為期3年)及相關的填土工程  
新界元朗八鄉丈量約份第106約地段第1892號餘段  
PROPOSED TEMPORARY ANIMAL BOARDING ESTABLISHMENT AND EATING PLACE WITH ANCILLARY FACILITIES FOR A PERIOD OF 3 YEARS AND ASSOCIATED FILLING OF LAND  
LOT 1892 RP IN D.D. 106, PAT HEUNG, YUEN LONG, NEW TERRITORIES

SCALE 1:1 000 比例尺

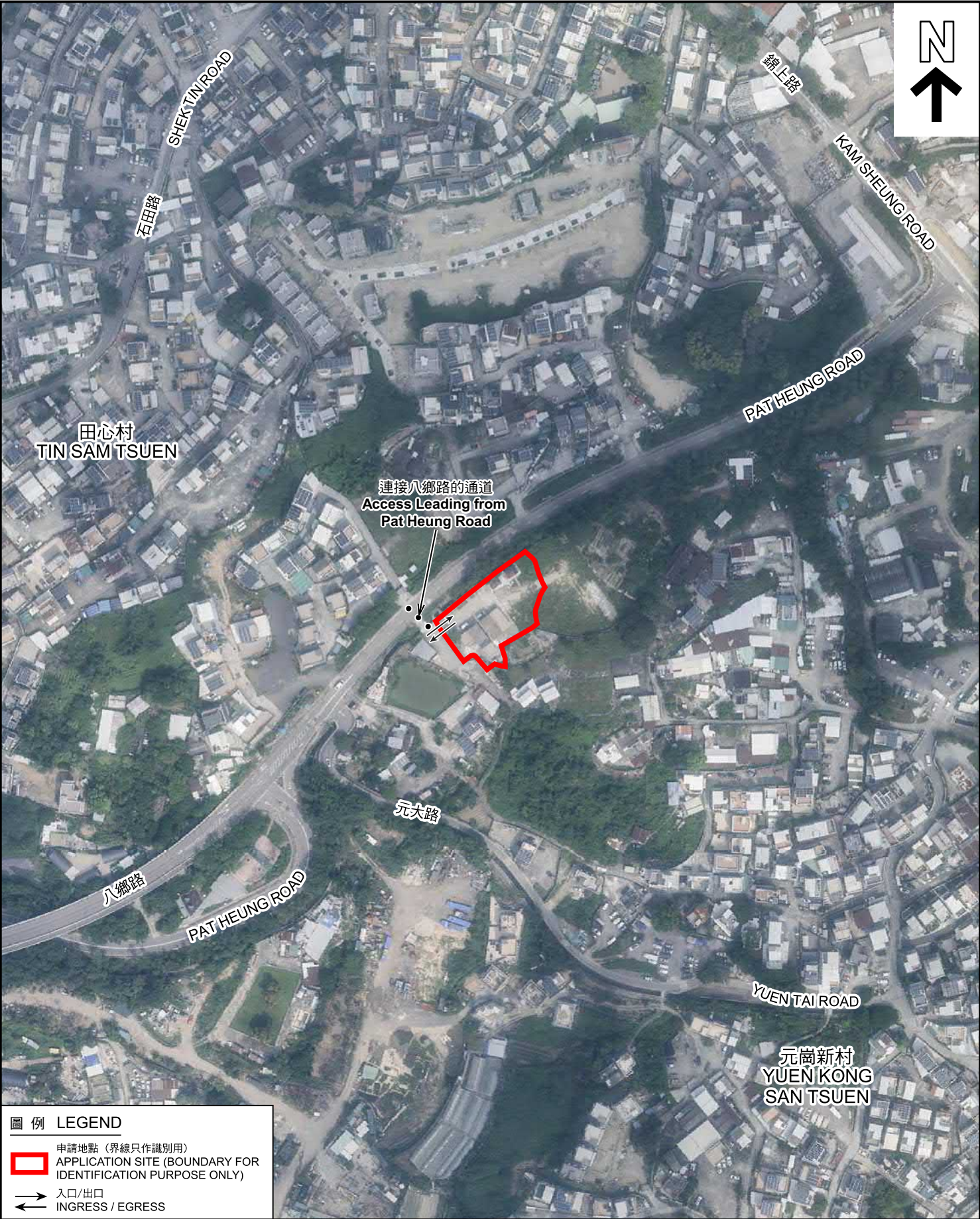
米 METRES 20 0 20 40 米 METRES

**規劃署 PLANNING DEPARTMENT**

參考編號 REFERENCE No.  
**A/YL-KTS/1052**

圖 PLAN  
**A-2**





圖例 LEGEND

 申請地點 (界線只作識別用)  
APPLICATION SITE (BOUNDARY FOR IDENTIFICATION PURPOSE ONLY)

 入口/出口  
INGRESS / EGRESS

本摘要圖於2025年4月10日擬備，  
所根據的資料為地政總署於2023年10月5日  
拍得的航攝照片編號 E209571C  
EXTRACT PLAN PREPARED ON 10.4.2025  
BASED ON AERIAL PHOTO No.  
E209571C TAKEN ON 5.10.2023  
BY LANDS DEPARTMENT

航攝照片 AERIAL PHOTO

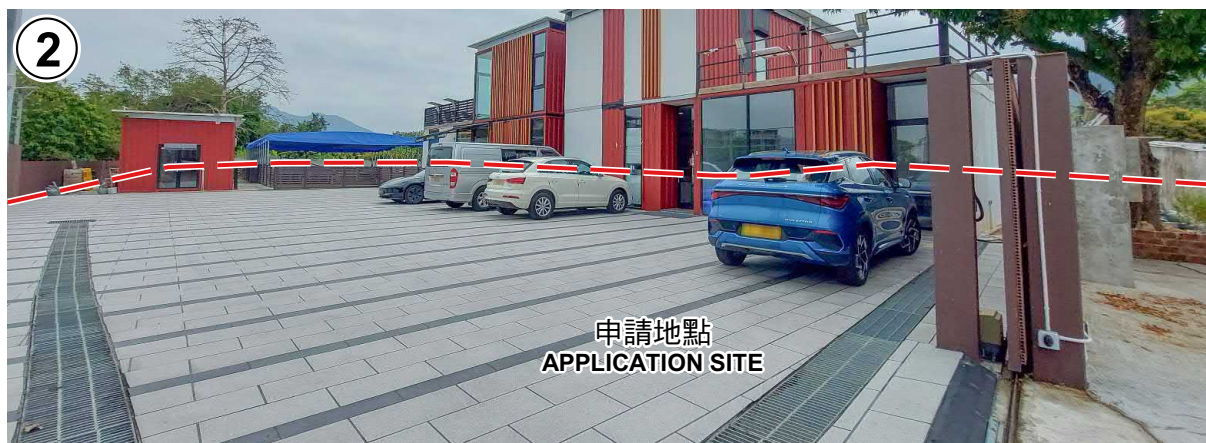
擬議臨時動物寄養所及食肆連附屬設施(為期3年)及相關的填土工程  
新界元朗八鄉丈量約份第106約地段第1892號餘段  
PROPOSED TEMPORARY ANIMAL BOARDING ESTABLISHMENT AND  
EATING PLACE WITH ANCILLARY FACILITIES FOR  
A PERIOD OF 3 YEARS AND ASSOCIATED FILLING OF LAND  
LOT 1892 RP IN D.D. 106, PAT HEUNG, YUEN LONG, NEW TERRITORIES

規劃署  
PLANNING  
DEPARTMENT

參考編號  
REFERENCE No.  
A/YL-KTS/1052

圖 PLAN  
A-3





申請地點界線只作識別用 APPLICATION SITE BOUNDARY FOR IDENTIFICATION PURPOSE ONLY

<p>本圖於2025年5月12日擬備，所根據的資料為攝於2025年4月8日的實地照片</p> <p>PLAN PREPARED ON 12.5.2025 BASED ON SITE PHOTOS TAKEN ON 8.4.2025</p>	<p><b>實地照片 SITE PHOTOS</b></p> <p>擬議臨時動物寄養所及食肆連附屬設施(為期3年)及相關的填土工程 新界元朗八鄉丈量約份第106約地段第1892號餘段 PROPOSED TEMPORARY ANIMAL BOARDING ESTABLISHMENT AND EATING PLACE WITH ANCILLARY FACILITIES FOR A PERIOD OF 3 YEARS AND ASSOCIATED FILLING OF LAND LOT 1892 RP IN D.D. 106, PAT HEUNG, YUEN LONG, NEW TERRITORIES</p>	<p><b>規劃署 PLANNING DEPARTMENT</b></p> <p>參考編號 REFERENCE No. A/YL-KTS/1052</p>	<p></p> <p>圖 PLAN A-4</p>
---	---	---	--