



LEGEND

-  APPLICATION SITE
-  PROPOSED EATING PLACE
-  ENTRANCE

STRUCTURE

- 1 EATING PLACE
- 2 STORAGE OF KITCHENWARE

APPLICATION SITE BOUNDARY
FOR IDENTIFICATION PURPOSE ONLY



PLANNING LIMITED
規劃顧問有限公司

LAYOUT PLAN

PROPOSED TEMPORARY EATING PLACE WITH ANCILLARY
STORAGE OF KITCHENWARE FOR A PERIOD OF 3 YEARS
LOTS 73 (PART) AND 74 (PART) IN D.D. 122,
PING SHAN, YUEN LONG, NEW TERRITORIES

SCALE 1:200

FIGURE 3.1

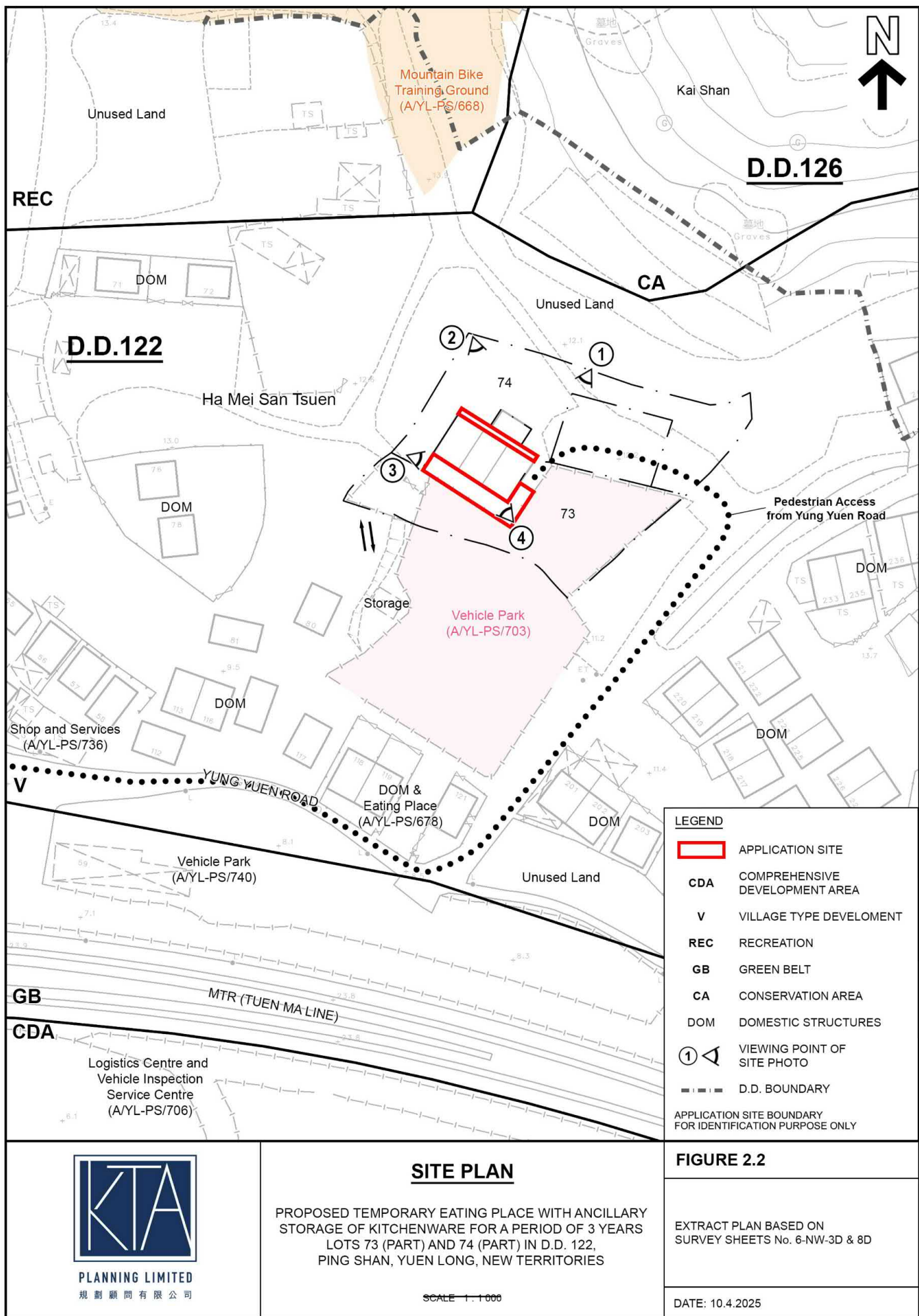
EXTRACT PLAN BASED ON
SURVEY SHEETS No. 6-NW-8B

DATE: 10.4.2025

(摘錄自申請人於 15.4.2025 呈交的申請書)
(Extract from Applicant's
Submission of 15.4.2025)

參考編號
REFERENCE No.
A/YL-PS/752

繪圖 DRAWING
A-1

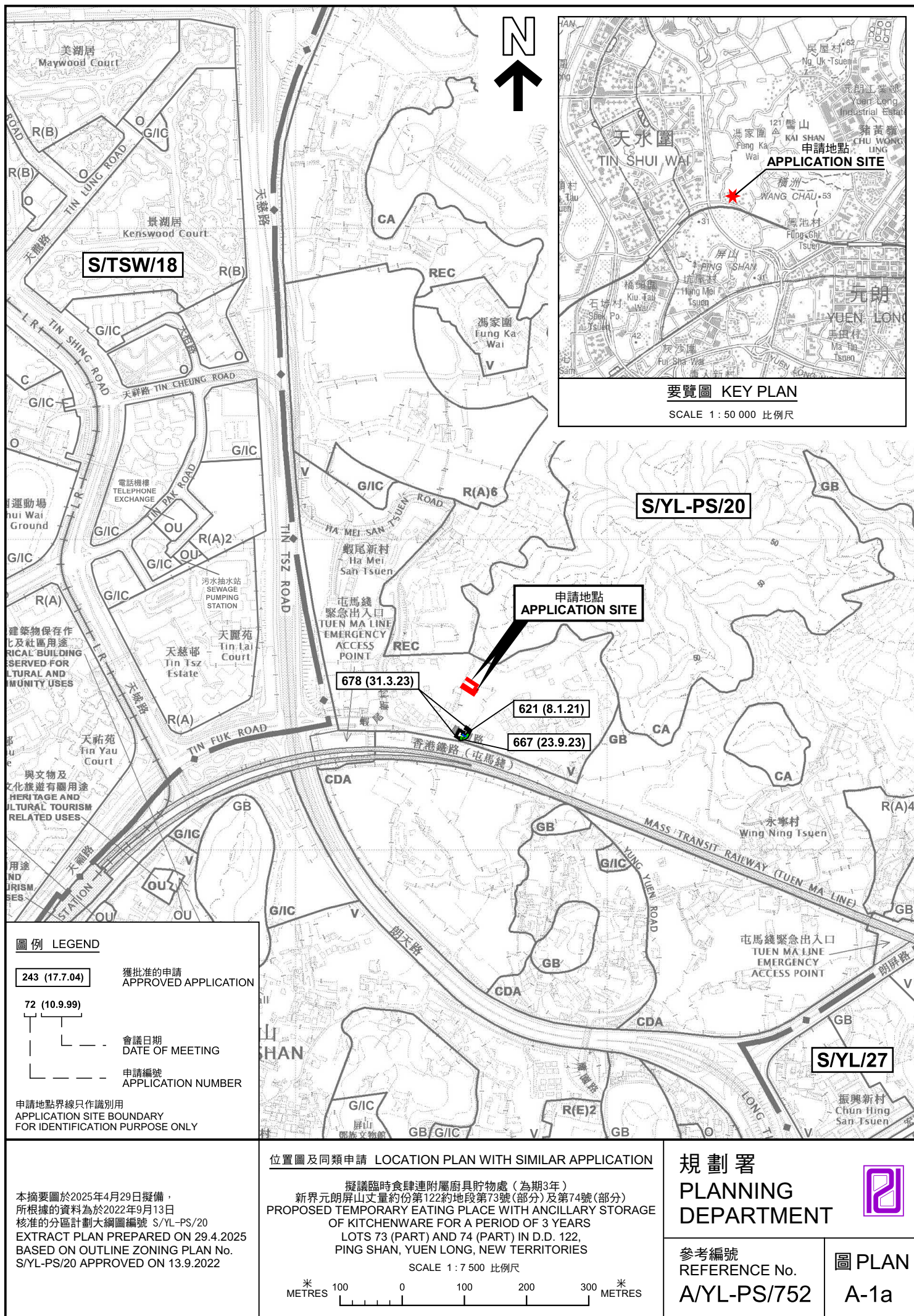


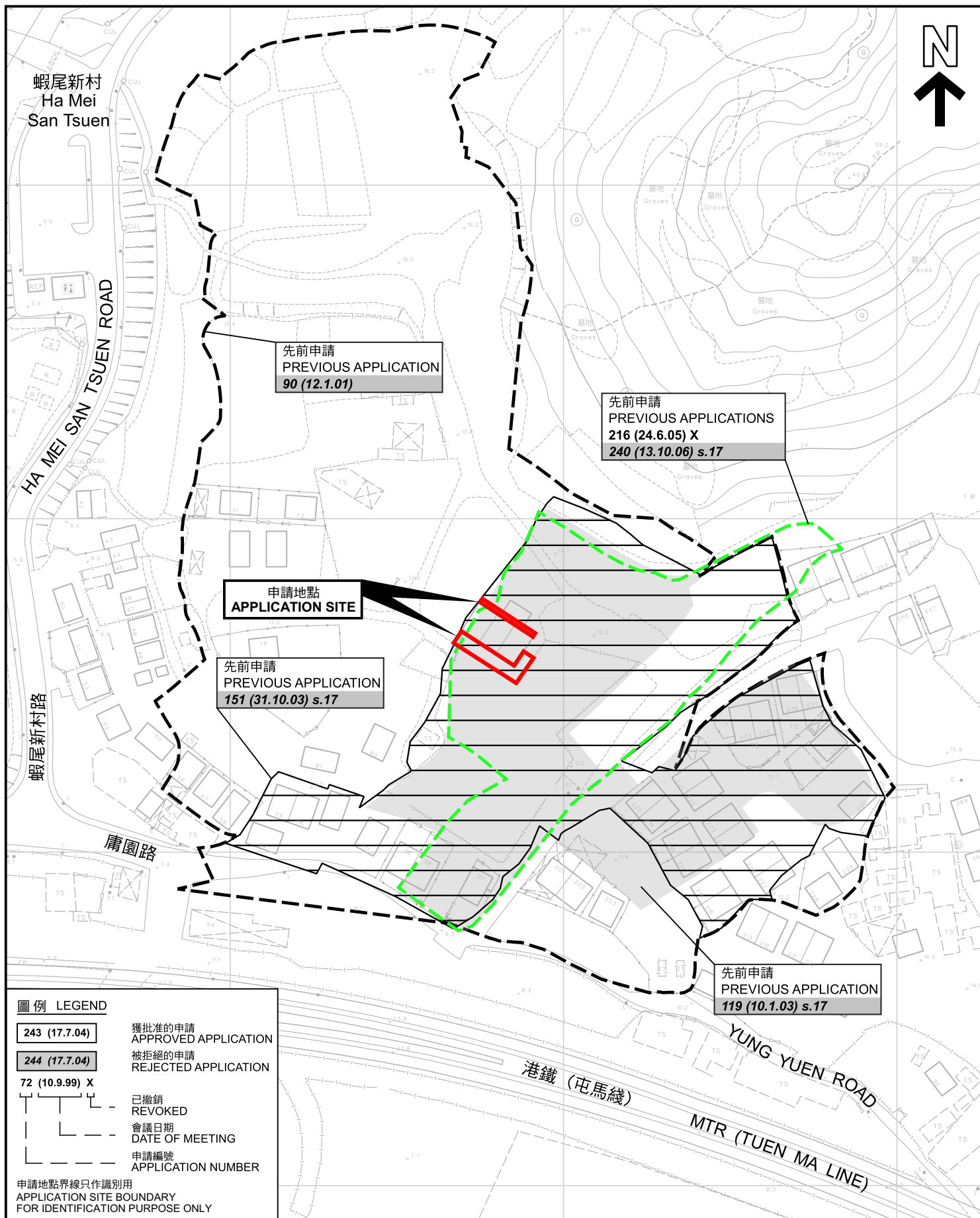
PLANNING LIMITED
規劃顧問有限公司

(摘錄自申請人於 15.4.2025 呈交的申請書)
(Extract from Applicant's
Submission of 15.4.2025)

參考編號
REFERENCE No.
A/YL-PS/752

繪圖 **DRAWING**
A-2





先前申請圖 PREVIOUS APPLICATIONS PLAN

擬議臨時食肆連附屬廚具貯物處 (為期3年)
PROPOSED TEMPORARY EATING PLACE WITH ANCILLARY STORAGE
OF KITCHENWARE FOR A PERIOD OF 3 YEARS
LOTS 73 (PART) AND 74 (PART) IN D.D. 122,
PING SHAN, YUEN LONG, NEW TERRITORIES

SCALE 1:1 500 比例尺
米 METRES 25 0 25 50 米 METRES

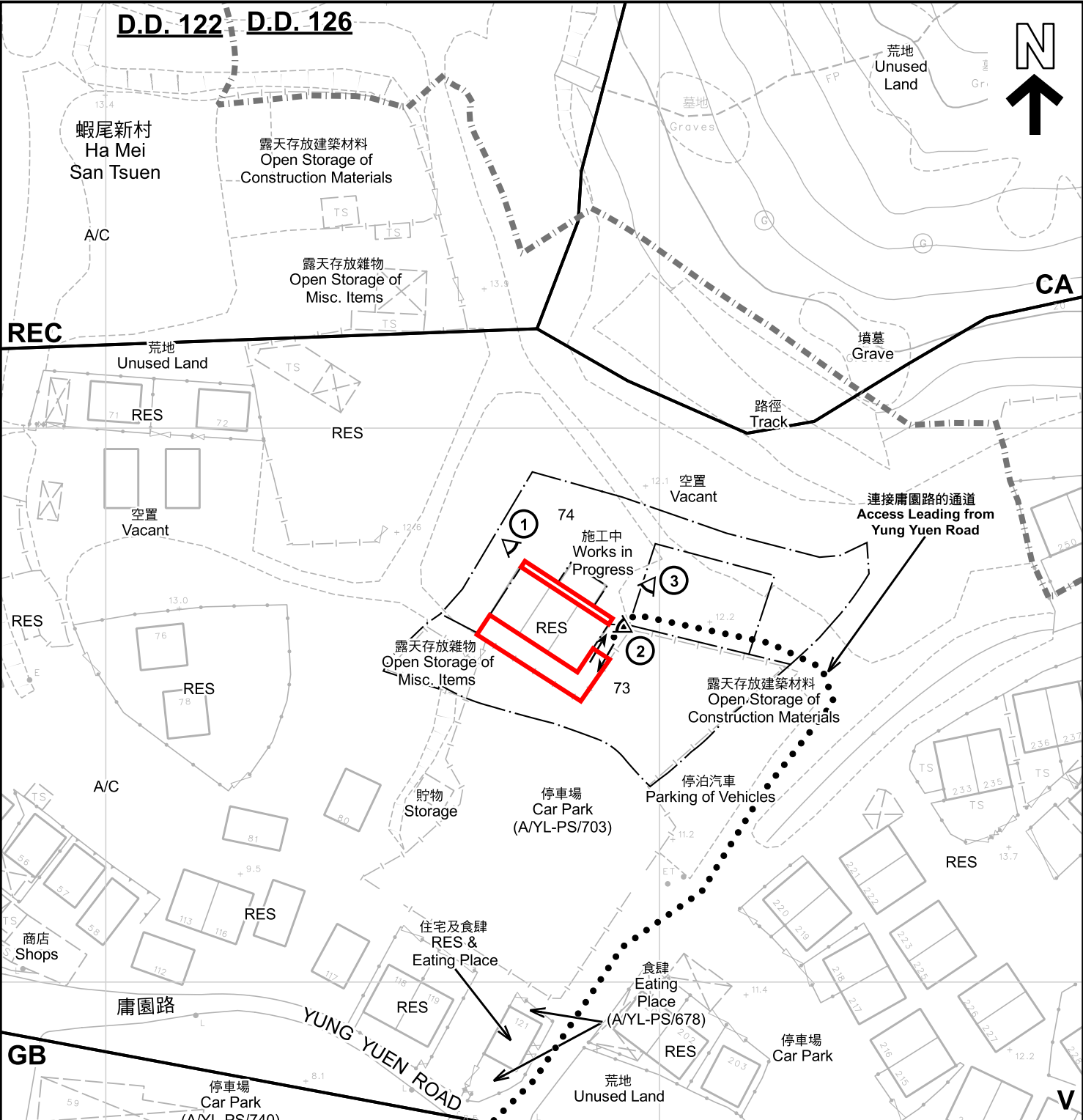
規劃署
PLANNING
DEPARTMENT



參考編號
REFERENCE No.
A/YL-PS/752

圖 PLAN
A-1b

本摘要圖於2025年4月29日擬備，所根據的資料為測量圖編號 6-NW-3D 和 6-NW-8B
EXTRACT PLAN PREPARED ON 29.4.2025
BASED ON SURVEY SHEETS No.
6-NW-3D and 6-NW-8B



圖例

LEGEND

申請地點 (界線只作識別用)
APPLICATION SITE (BOUNDARY FOR IDENTIFICATION PURPOSE ONLY)

V 鄉村式發展
VILLAGE TYPE DEVELOPMENT

REC 康樂
RECREATION

GB 綠化地帶
GREEN BELT

CA 自然保育區
CONSERVATION AREA

RES 住用構築物
RESIDENTIAL STRUCTURES

A/C 常耕農地
CULTIVATED AGRICULTURAL LAND

實地照片的觀景點
VIEWING POINT OF SITE PHOTO

入口/出口
INGRESS / EGRESS

丈量約份界線
D.D. BOUNDARY

註釋 Notes :
2025年4月25日勘測的土地用途
Land uses shown on this plan are in accordance with the land use survey conducted by the Planning Department on 25.4.2025

本摘要圖於2025年4月29日擬備，所根據的資料為測量圖編號 6-NW-8B
EXTRACT PLAN PREPARED ON 29.4.2025 BASED ON SURVEY SHEET No. 6-NW-8B

平面圖 SITE PLAN

擬議臨時食肆連附屬具貯物處 (為期3年)
PROPOSED TEMPORARY EATING PLACE WITH ANCILLARY STORAGE OF KITCHENWARE FOR A PERIOD OF 3 YEARS

新界元朗屏山丈量約份第122約地段第73號(部分)及第74號(部分)
LOTS 73 (PART) AND 74 (PART) IN D.D. 122, PING SHAN, YUEN LONG, NEW TERRITORIES

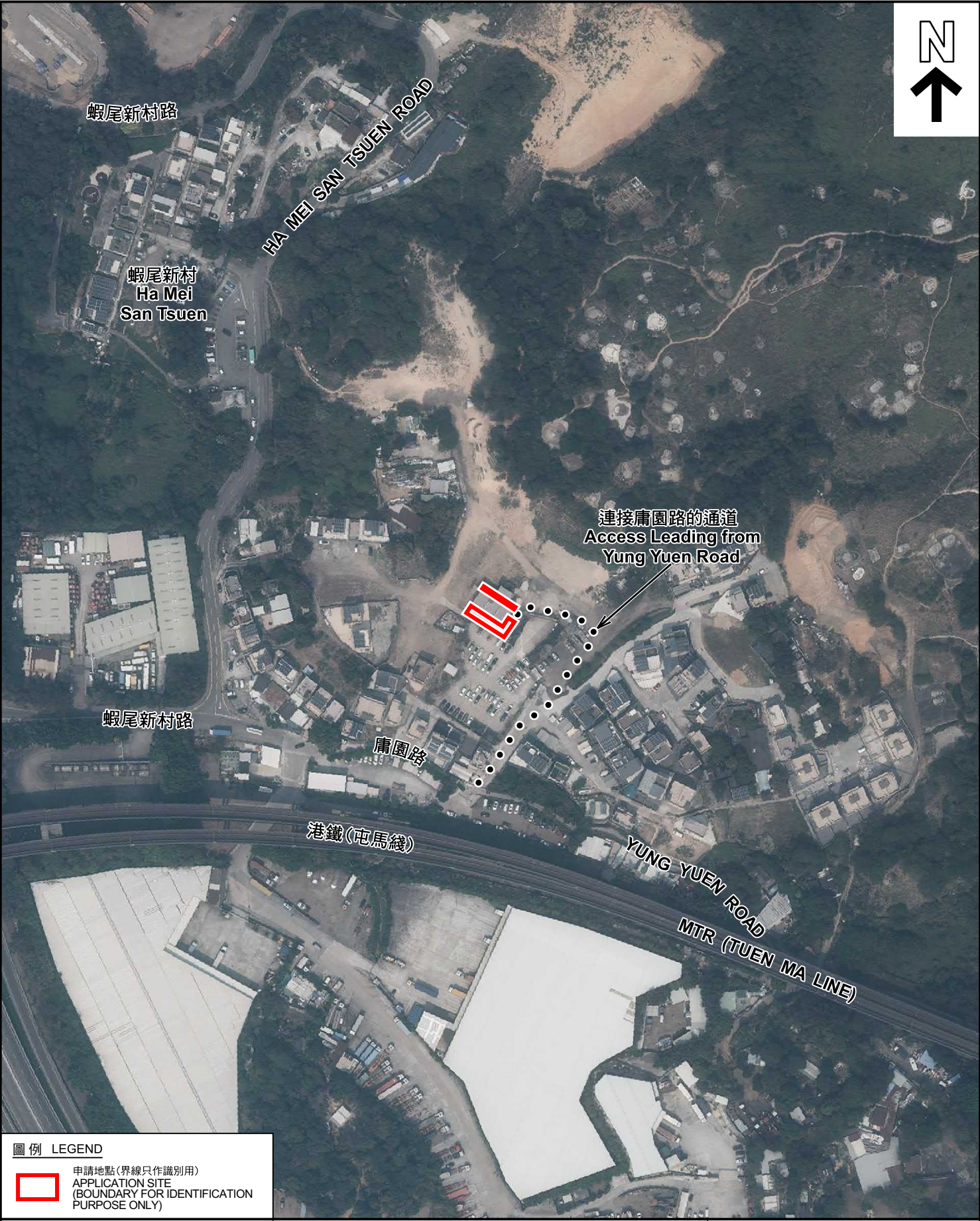
SCALE 1 : 1 000 比例尺

米 METRES 20 0 20 40 米 METRES

規劃署
PLANNING DEPARTMENT

參考編號
REFERENCE No.
A/YL-PS/752

圖 PLAN
A-2



圖例 LEGEND



申請地點(界線只作識別用)
APPLICATION SITE
(BOUNDARY FOR IDENTIFICATION
PURPOSE ONLY)

本摘要圖於2025年4月25日擬備，所根據的資料為地政總署於2023年2月24日拍得的航攝照片編號 E187389C
EXTRACT PLAN PREPARED ON 25.4.2025
BASED ON AERIAL PHOTO No.
E187389C TAKEN ON 24.2.2023
BY LANDS DEPARTMENT

航攝照片 AERIAL PHOTO

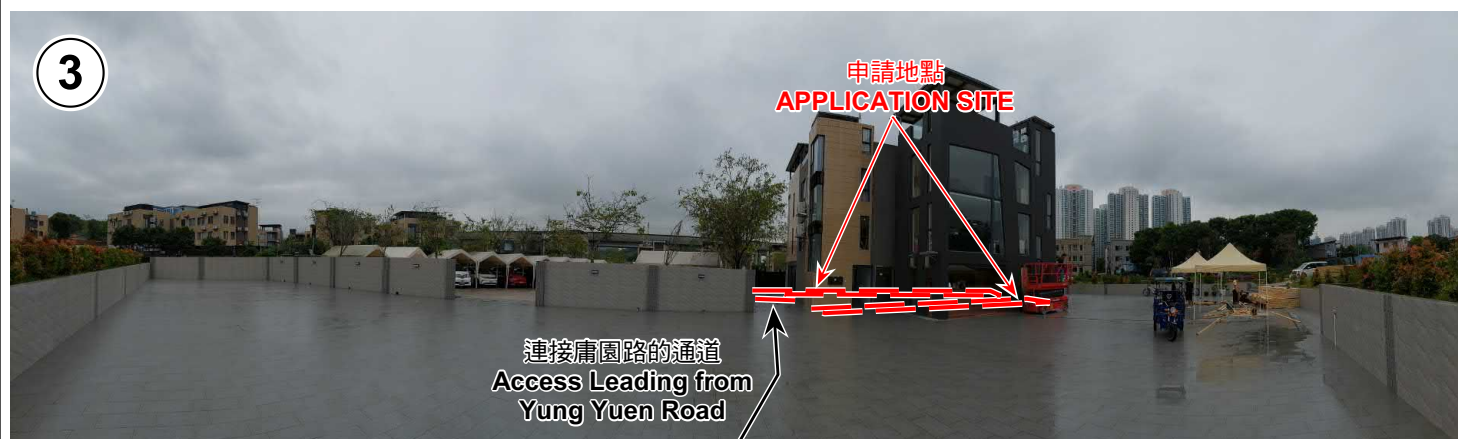
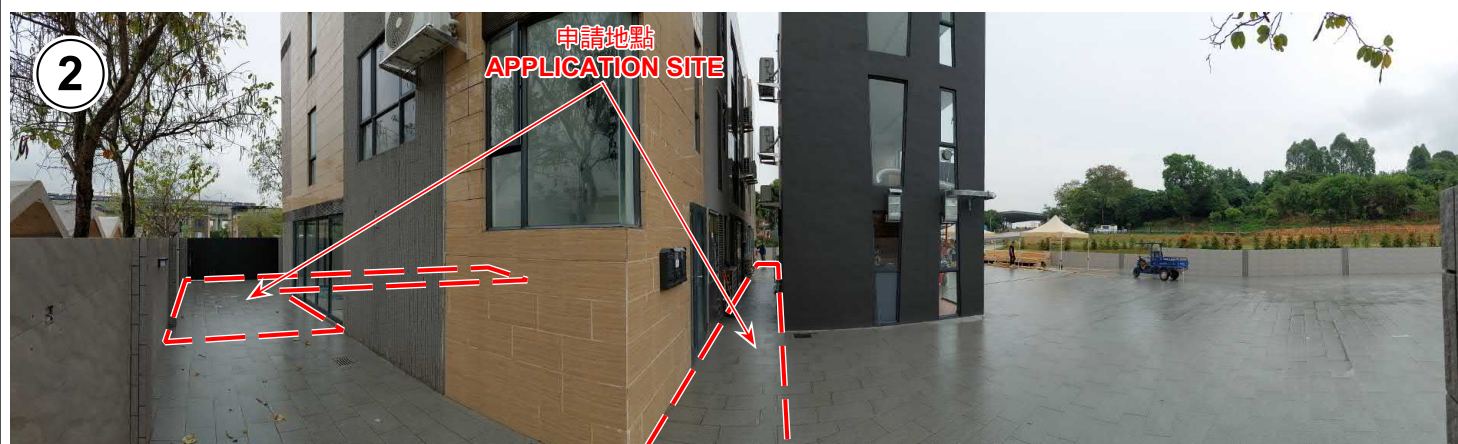
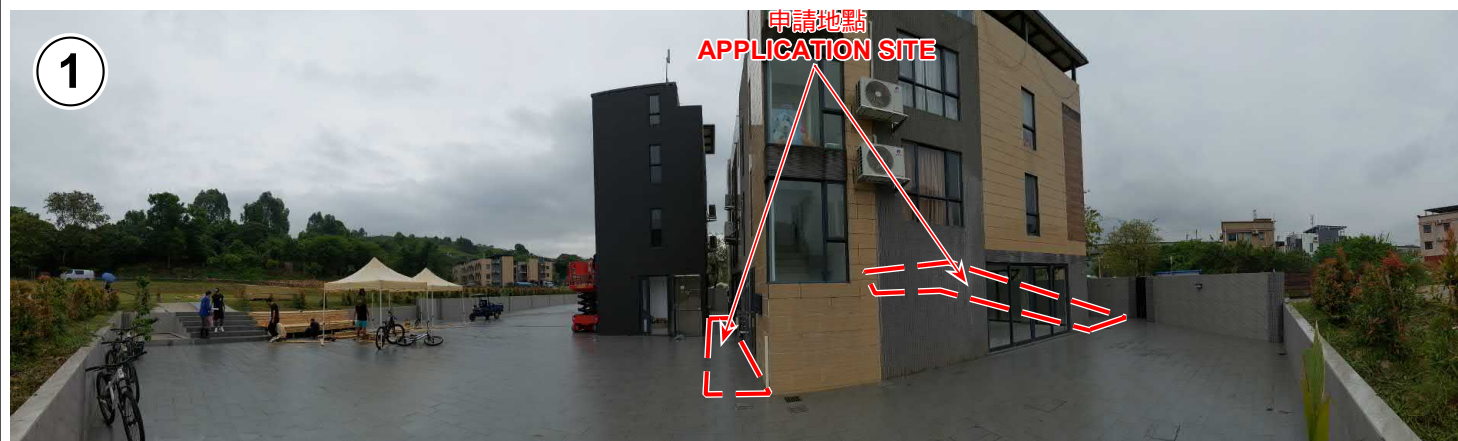
擬議臨時食肆連附屬廚具貯物處(為期3年)
新界元朗屏山丈量約份第122約地段第73號(部分)及第74號(部分)
PROPOSED TEMPORARY EATING PLACE WITH ANCILLARY STORAGE
OF KITCHENWARE FOR A PERIOD OF 3 YEARS
LOTS 73 (PART) AND 74 (PART) IN D.D. 122,
PING SHAN, YUEN LONG, NEW TERRITORIES

規 劃 署
PLANNING
DEPARTMENT



參考編號
REFERENCE No.
A/YL-PS/752

圖 PLAN
A-3



申請地點界線只作識別用 APPLICATION SITE BOUNDARY FOR IDENTIFICATION PURPOSE ONLY

實地照片 SITE PHOTOS

本圖於2025年4月29日擬備，所根據的資料為攝於2025年4月25日的實地照片
PLAN PREPARED ON 29.4.2025
BASED ON SITE PHOTOS
TAKEN ON 25.4.2025

擬議臨時食肆連附屬廚具貯物處（為期3年）
新界元朗屏山丈量約份第122約地段第73號（部分）及第74號（部分）
PROPOSED TEMPORARY EATING PLACE WITH ANCILLARY STORAGE
OF KITCHENWARE FOR A PERIOD OF 3 YEARS
LOTS 73 (PART) AND 74 (PART) IN D.D. 122,
PING SHAN, YUEN LONG, NEW TERRITORIES

規劃署
PLANNING
DEPARTMENT



參考編號
REFERENCE No.
A/YL-PS/752

圖 PLAN
A-4