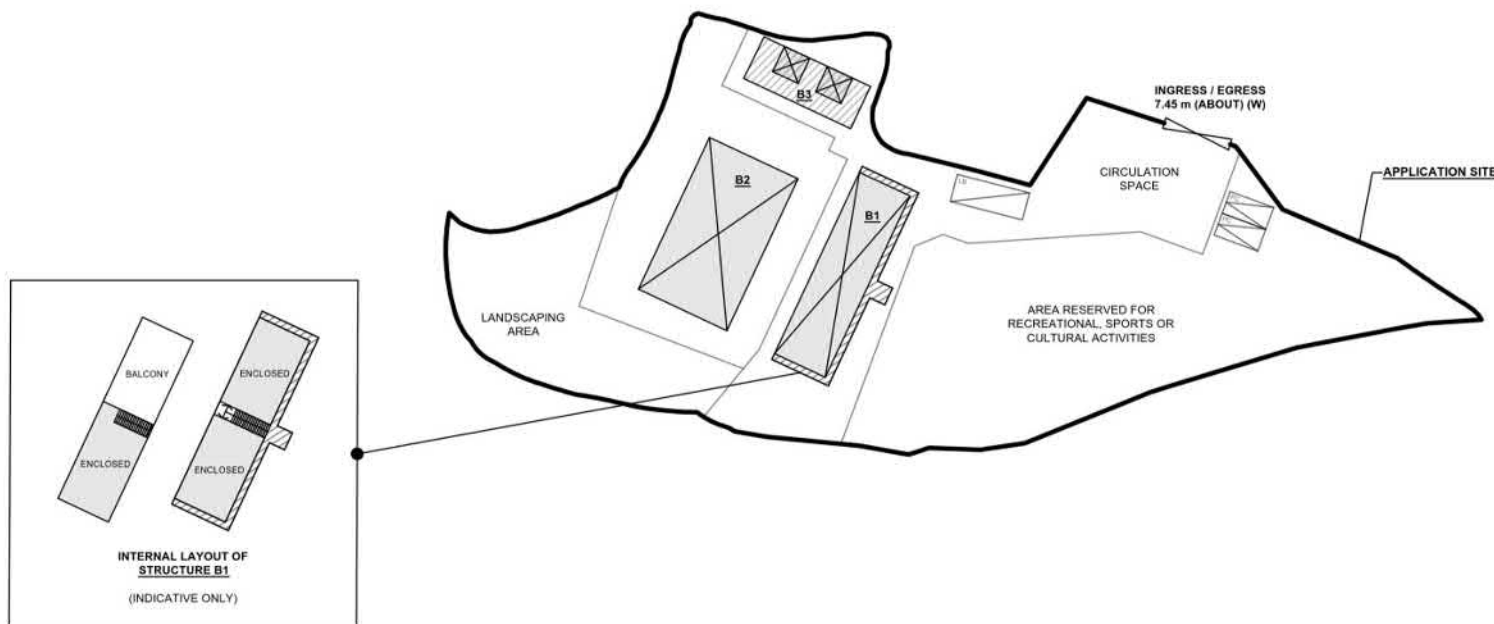
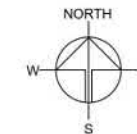


DEVELOPMENT PARAMETERS

APPLICATION SITE AREA	: 2,856 m ²	(ABOUT)
COVERED AREA	: 409 m ²	(ABOUT)
UNCOVERED AREA	: 2,447 m ²	(ABOUT)
PLOT RATIO	: 0.16	(ABOUT)
SITE COVERAGE	: 14 %	(ABOUT)
NO. OF STRUCTURE	: 3	
DOMESTIC GFA	: NOT APPLICABLE	
NON-DOMESTIC GFA	: 472 m ²	(ABOUT)
TOTAL GFA	: 472 m ²	(ABOUT)
BUILDING HEIGHT	: 3 m - 7 m	(ABOUT)
NO. OF STOREY	: 1 - 2	

STRUCTURE	USE	COVERED AREA	GFA	BUILDING HEIGHT
B1	ACTIVITY ROOM, WASHROOM, SITE OFFICE AND STORE ROOM	157 m ² (ABOUT) [#]	220 m ² (ABOUT) [#]	7 m (ABOUT)(2-STOREY)
B2	ACTIVITY ROOM*	189 m ² (ABOUT)	189 m ² (ABOUT)	4 m (ABOUT)(1-STOREY)
B3	RAIN SHELTER, WASHROOM AND STORE ROOM	63 m ² (ABOUT)	63 m ² (ABOUT)	3 m (ABOUT)(1-STOREY)
TOTAL		409 m ² (ABOUT)	472 m ² (ABOUT)	

*STRUCTURE B2 IS A RETRACTABLE MARQUEE
[#]GFA OF STRUCTURE B1 = 157m² (G/F) + 63 m² (1/F) = 220m²



INTERNAL LAYOUT OF
STRUCTURE B1
(INDICATIVE ONLY)

PARKING AND LOADING / UNLOADING PROVISIONS

NO. OF PRIVATE CAR PARKING SPACE	: 2
DIMENSION OF PARKING SPACE	: 5 m (L) x 2.5 m (W)
NO. OF L/U SPACE FOR LIGHT BUS / LIGHT GOODS VEHICLE	: 1
DIMENSION OF L/U SPACE	: 8 m (L) x 3.5 m (W)

LEGEND

	APPLICATION SITE
	STRUCTURE (ENCLOSED)
	STRUCTURE (NOT ENCLOSED)
	PARKING SPACE (PC)
	LOADING / UNLOADING SPACE (LB / LGV)
	INGRESS / EGRESS

PLANNING CONSULTANT



PROJECT

PROPOSED TEMPORARY PLACE OF RECREATION, SPORTS OR CULTURE WITH ANCILLARY FACILITIES FOR A PERIOD OF 3 YEARS AND ASSOCIATED FILLING OF LAND

SITE LOCATION

VARIOUS LOTS IN D.D. 112, SHEK KONG, YUEN LONG, NEW TERRITORIES

SCALE

1:700 @ A1

DRAWN BY:

MN

DATE

20.3.2025

REVISED BY:

DATE

APPROVED BY:

DATE

DWG. TITLE

LAYOUT PLAN

DWG NO.

ANNEX 4

VER

002

(摘錄自申請人於 10. 4. 2025 呈交的進一步資料)
 (Extract from Applicant's Further
 Information Submitted on 10.4.2025)

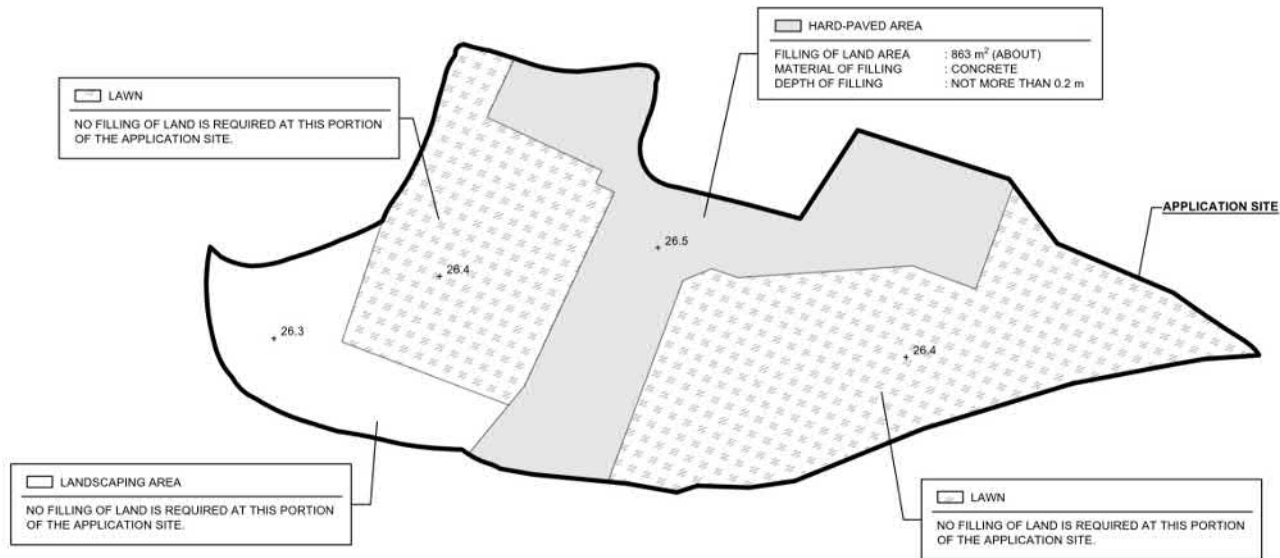
參考編號
REFERENCE No.
A/YL-SK/400

繪圖
DRAWING
A - 1

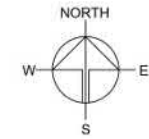
PAVED RATIO OF THE APPLICATION SITE

APPLICATION SITE AREA	: 2,856 m ²	(ABOUT)
COVERED BY STRUCTURE	: 409 m ²	(ABOUT)
EXISTING HARD-PAVED AREA	: 863 m ²	(ABOUT)
DEPTH OF LAND FILLING	: NOT MORE THAN 0.2 m	(ABOUT)
EXISTING SITE LEVELS	: +26.5 mPD (ABOUT)	
MATERIAL OF LAND FILLING	: CONCRETE	
USE	: SITE FORMATION OF STRUCTURES, AND CIRCULATION SPACE	
EXISTING LAWN AREA	: 1,623 m ²	(ABOUT)
EXISTING LANDSCAPING AREA	: 370 m ²	(ABOUT)

*NO FURTHER FILLING OF LAND WILL BE CARRIED OUT AT THE APPLICATION SITE AFTER PLANNING APPROVAL HAS BEEN GRANTED FROM THE TOWN PLANNING BOARD.



SITE LEVELS ARE FOR REFERENCE ONLY.



PLANNING CONSULTANT



PROJECT

PROPOSED TEMPORARY PLACE OF RECREATION, SPORTS OR CULTURE WITH ANCILLARY FACILITIES FOR A PERIOD OF 3 YEARS AND ASSOCIATED FILLING OF LAND

SITE LOCATION

VARIOUS LOTS IN D.D. 112, SHEK KONG, YUEN LONG, NEW TERRITORIES

SCALE

1:700 @ A4

DRAWN BY

MN

DATE

7.11.2024

REVIEWED BY

DATE

APPROVED BY

DATE

DWG. TITLE

FILLING OF LAND

DWG. NO.

PLAN 6

VER.

001

LEGEND

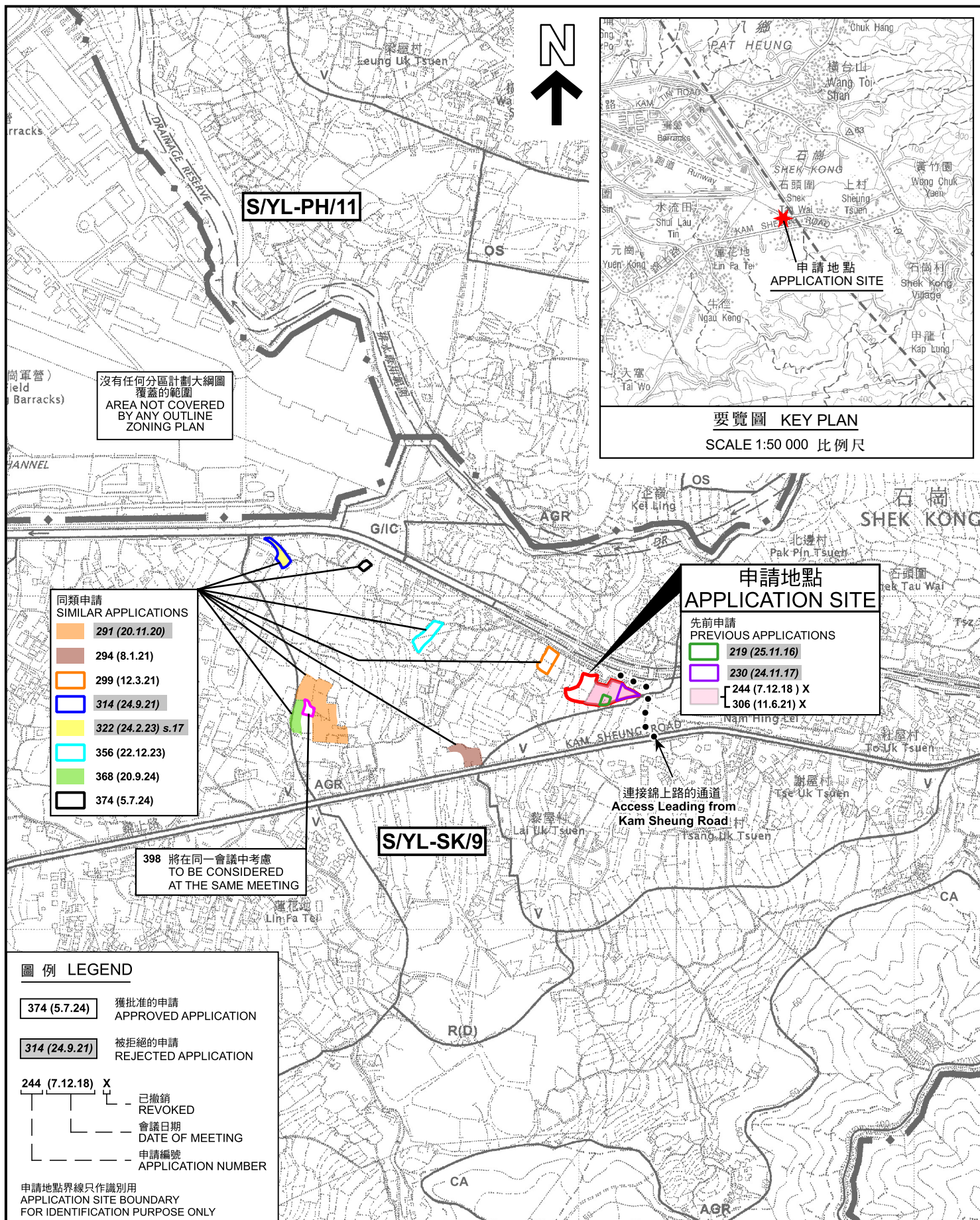
	APPLICATION SITE
	LAND FILLING AREA
	SITE LEVEL

+3.4

(摘錄自申請人於 18.12.2024 呈交的申請書)
(Extract from Applicant's
Submission of 18.12.2024)

參考編號
REFERENCE No.
A/YL-SK/400

繪圖
DRAWING
A - 2



位置圖 LOCATION PLAN

臨時康體文娛場所連附屬設施（為期3年）及相關填土工程
 新界元朗石崗丈量約份第112號地段A分地段、第110號B分地段、
 第110號C分地段、第110號D分地段第1小分段A分地段、第110號D分地段第1小分段餘段、
 第110號D分地段第2小分段、第110號D分地段第3小分段及第110號D分地段餘段
 TEMPORARY PLACE OF RECREATION, SPORTS OR CULTURE WITH ANCILLARY
 FACILITIES FOR A PERIOD OF 3 YEARS AND
 ASSOCIATED FILLING OF LAND
 LOTS 110 S.A RP, 110 S.B, 110 S.C, 110 S.D ss.1 S.A, 110 S.D ss.1 RP, 110 S.D ss.2,
 0 S.D ss.3 AND 110 S.D RP IN D.D. 112, SHEK KONG, YUEN LONG, NEW TERRITORIES
 SCALE 1 : 7 500 比例尺

規劃署
PLANNING
DEPARTMENT

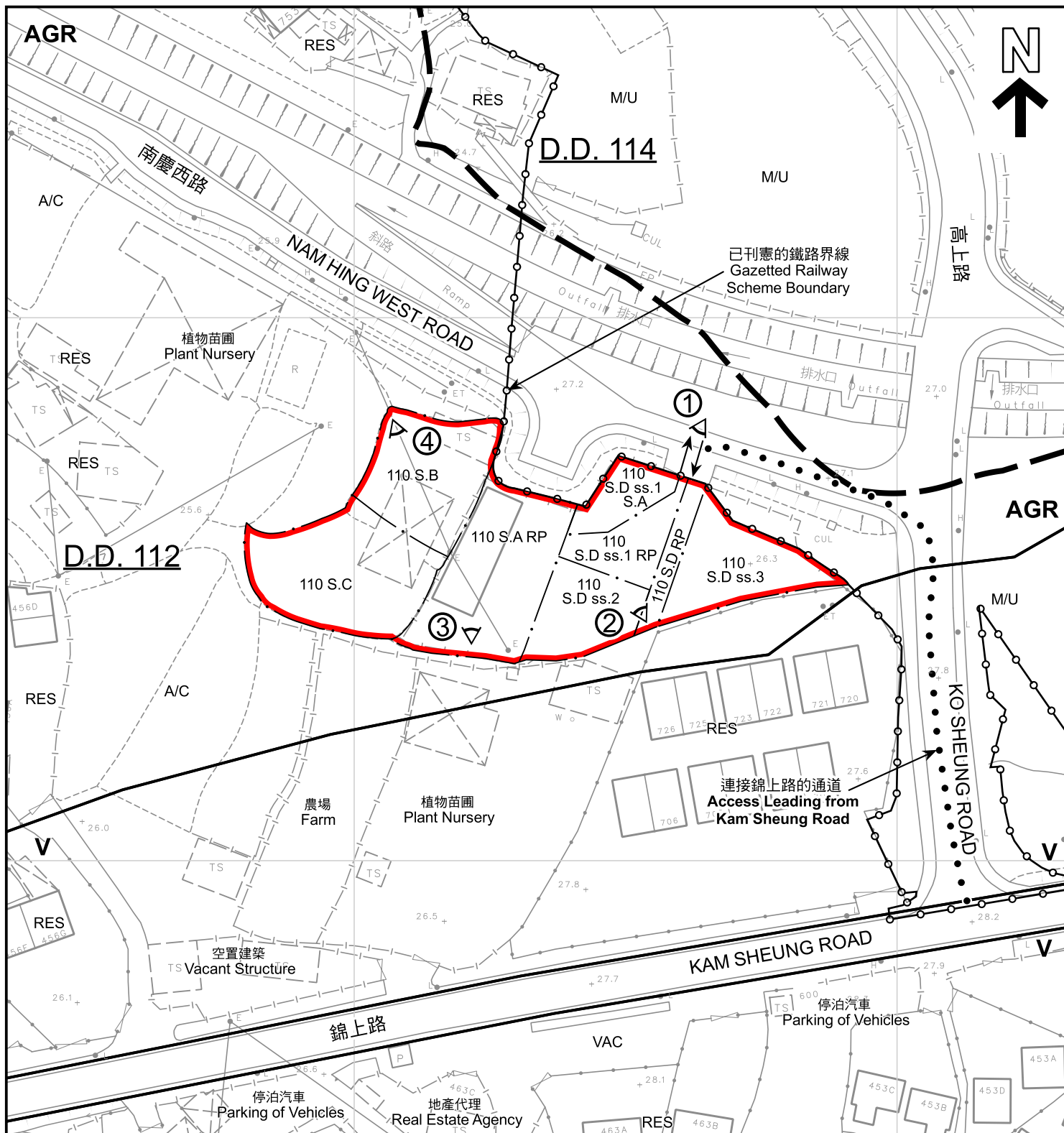


參考編號
REFERENCE No.
A/YL-SK/400

PLAN
A-1

本摘要圖於2025年6月2日擬備，
所根據的資料為於2006年10月17日
核准的分區計劃大綱圖編號S/YL-SK/9

EXTRACT PLAN PREPARED ON
2.6.2025 BASED ON OUTLINE ZONING
PLAN No. S/YL-SK/9 APPROVED ON
17.10.2006



圖例 LEGEND

	申請地點 (界線只作識別用) APPLICATION SITE (BOUNDARY FOR IDENTIFICATION PURPOSE ONLY)	A/C	常耕農地 CULTIVATED AGRICULTURAL LAND		入口/出口 INGRESS / EGRESS
	鄉村式發展 VILLAGE TYPE DEVELOPMENT	M/U	荒地 UNUSED LAND		實地照片的觀景點 VIEWING POINT OF SITE PHOTO
	農業 AGRICULTURE	RES	住用構築物 RESIDENTIAL STRUCTURES	註釋 Note: 2025年5月15日勘測的土地用途 Land uses shown on this plan are in accordance with the land use survey conducted by the Planning Department on 15.5.2025	
		VAC	空置 VACANT		

平面圖 SITE PLAN

臨時康體文娛場所連附屬設施 (為期3年) 及相關填土工程
新界元朗石崗丈量約份第110號地段第110號A分段餘段、第110號B分段、
第110號C分段、第110號D分段第1小分段A分段、第110號D分段第1小分段餘段、
第110號D分段第2小分段、第110號D分段第3小分段及第110號D分段餘段
TEMPORARY PLACE OF RECREATION, SPORTS OR CULTURE WITH ANCILLARY
FACILITIES FOR A PERIOD OF 3 YEARS AND
ASSOCIATED FILLING OF LAND
LOTS 110 S.A.R.P, 110 S.B, 110 S.C, 110 S.D ss.1 S.A, 110 S.D ss.1 RP, 110 S.D ss.2,
110 S.D ss.3 AND 110 S.D RP IN D.D. 112, SHEK KONG, YUEN LONG, NEW TERRITORIES

SCALE 1:1 000 比例尺

米 20 0 20 40 米
METRES

規劃署
PLANNING
DEPARTMENT




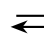
參考編號
REFERENCE No.
A/YL-SK/400

圖 PLAN
A-2

本摘要圖於2025年5月21日擬備，
所根據的資料為測量圖編號
6-NE-14C及19A
EXTRACT PLAN PREPARED ON
21.5.2025 BASED ON SURVEY SHEET
No. 6-NE-14C & 19A



圖例 LEGEND

-  申請地點 (界線只作識別用)
APPLICATION SITE
(BOUNDARY FOR IDENTIFICATION
PURPOSE ONLY)
-  入口/出口
INGRESS / EGRESS

航攝照片 AERIAL PHOTO

本摘要圖於2025年5月19日擬備，所根據的資料為地政總署於2023年10月5日拍得的航攝照片編號E209630C

EXTRACT PLAN PREPARED ON
19.5.2025 BASED ON AERIAL PHOTO No.
E209630C TAKEN ON 5.10.2023 BY
LANDS DEPARTMENT

臨時康體文娛場所連附屬設施(為期3年)及相關填土工程
新界元朗石崗丈量約份第112約地段第110號A分段餘段、第110號B分段、
第110號C分段、第110號D分段第1小分段A分段、第110號D分段第1小分段餘段、
第110號D分段第2小分段、第110號D分段第3小分段及第110號D分段餘段
TEMPORARY PLACE OF RECREATION, SPORTS OR CULTURE WITH ANCILLARY
FACILITIES FOR A PERIOD OF 3 YEARS AND
ASSOCIATED FILLING OF LAND
LOTS 110 S.A RP, 110 S.B, 110 S.C, 110 S.D ss.1 S.A, 110 S.D ss.1 RP, 110 S.D ss.2,
110 S.D ss.3 AND 110 S.D RP IN D.D. 112, SHEK KONG, YUEN LONG, NEW TERRITORIES

規劃署
PLANNING
DEPARTMENT



參考編號
REFERENCE No.
A/YL-SK/400

圖 PLAN
A-3



申請地點界線只作識別用
APPLICATION SITE BOUNDARY FOR IDENTIFICATION PURPOSE ONLY

實地照片 SITE PHOTOS

臨時康體文娛場所連附屬設施（為期3年）及相關填土工程
新界元朗石崗丈量約份第112約地段第110號A分段餘段、第110號B分段、
第110號C分段、第110號D分段第1小分段A分段、第110號D分段第1小分段餘段、
第110號D分段第2小分段、第110號D分段第3小分段及第110號D分段餘段
TEMPORARY PLACE OF RECREATION, SPORTS OR CULTURE WITH ANCILLARY
FACILITIES FOR A PERIOD OF 3 YEARS AND
ASSOCIATED FILLING OF LAND
LOTS 110 S.A RP, 110 S.B, 110 S.C, 110 S.D ss.1 S.A, 110 S.D ss.1 RP, 110 S.D ss.2,
110 S.D ss.3 AND 110 S.D RP IN D.D. 112, SHEK KONG, YUEN LONG, NEW TERRITORIES

規劃署
PLANNING
DEPARTMENT



參考編號
REFERENCE No.
A/YL-SK/400

圖 PLAN
A-4

本圖於2025年5月21日擬備，所根據的
資料為攝於2025年5月15日的實地照片

PLAN PREPARED ON 21.5.2025
BASED ON SITE PHOTOS
TAKEN ON 15.5.2025