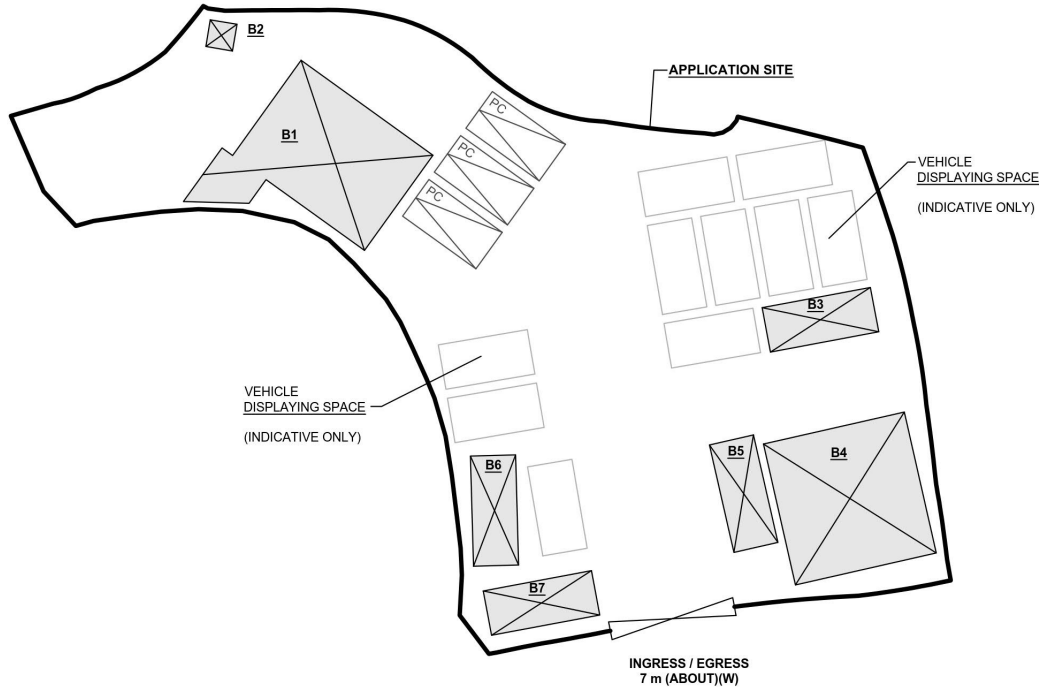
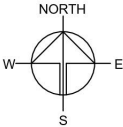


DEVELOPMENT PARAMETERS

APPLICATION SITE AREA	: 973 m <sup>2</sup>	(ABOUT)
COVERED AREA	: 193 m <sup>2</sup>	(ABOUT)
UNCOVERED AREA	: 780 m <sup>2</sup>	(ABOUT)
PLOT RATIO	: 0.2	(ABOUT)
SITE COVERAGE	: 20 %	(ABOUT)
NO. OF STRUCTURE	: 7	
DOMESTIC GFA	: NOT APPLICABLE	
NON-DOMESTIC GFA	: 193 m <sup>2</sup>	(ABOUT)
TOTAL GFA	: 193 m <sup>2</sup>	(ABOUT)
BUILDING HEIGHT	: 2.5 m - 4 m	(ABOUT)
NO. OF STOREY	: 1	

STRUCTURE	USE	COVERED AREA	GROSS FLOOR AREA	BUILDING HEIGHT
B1	SHOP AND SERVICES	66 m <sup>2</sup> (ABOUT)	66 m <sup>2</sup> (ABOUT)	4 m (ABOUT)(1-STOREY)
B2	PORTABLE TOILET	3 m <sup>2</sup> (ABOUT)	3 m <sup>2</sup> (ABOUT)	2.5 m (ABOUT)(1-STOREY)
B3	STORAGE OF GOODS	15 m <sup>2</sup> (ABOUT)	15 m <sup>2</sup> (ABOUT)	3 m (ABOUT)(1-STOREY)
B4	ANCILLARY WORKSHOP	64 m <sup>2</sup> (ABOUT)	64 m <sup>2</sup> (ABOUT)	4 m (ABOUT)(1-STOREY)
B5	STORAGE OF WORKSHOP EQUIPMENT	15 m <sup>2</sup> (ABOUT)	15 m <sup>2</sup> (ABOUT)	3 m (ABOUT)(1-STOREY)
B6	SITE OFFICE	15 m <sup>2</sup> (ABOUT)	15 m <sup>2</sup> (ABOUT)	3 m (ABOUT)(1-STOREY)
B7	STORAGE OF AUTO PARTS	15 m <sup>2</sup> (ABOUT)	15 m <sup>2</sup> (ABOUT)	3 m (ABOUT)(1-STOREY)
TOTAL		193 m <sup>2</sup> (ABOUT)	193 m <sup>2</sup> (ABOUT)	



PARKING PROVISION

NO. OF PRIVATE CAR PARKING SPACE	: 3
DIMENSION OF PARKING SPACE	: 5m (L) X 2.5m (W)

LEGEND

	APPLICATION SITE
	STRUCTURE
	PARKING SPACE
	VEHICLE DISPLAYING SPACE
	INGRESS / EGRESS

PLANNING CONSULTANT



PROJECT

PROPOSED TEMPORARY SHOP AND SERVICES WITH ANCILLARY WORKSHOP AND ASSOCIATED FILLING OF LAND FOR A PERIOD OF 3 YEARS

SITE LOCATION

LOT 286 RP AND 287 RP (PART) IN D.D. 112, KAM SHEUNG ROAD, SHEK KONG, YUEN LONG, NEW TERRITORIES

SCALE

1:350 @ A4

DRAWN BY	DATE
MN	1.4.2025
REVISED BY	DATE
APPROVED BY	DATE
DWG. TITLE	
LAYOUT PLAN	
DWG NO.	VER.
PLAN 4	001

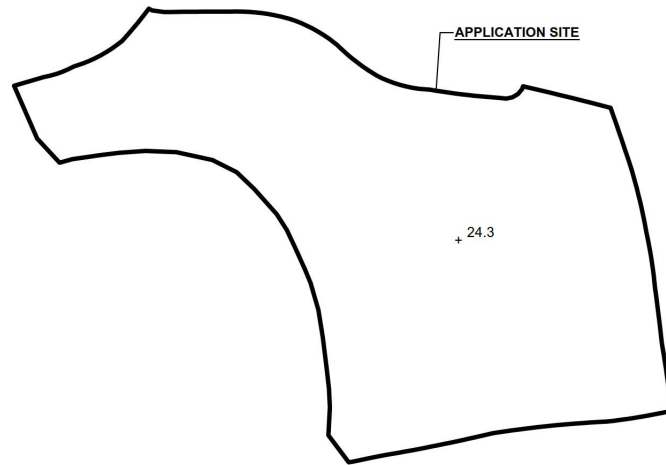
(摘錄自申請人於 2.5.2025 呈交的申請書)  
(Extract from Applicant's  
Submission of 2.5.2025)

參考編號  
REFERENCE No.  
A/YL-SK/416

繪圖  
DRAWING  
A - 1

# THE APPLICATION SITE BEFORE BEING HARD-PAVED

APPLICATION SITE AREA : 973 m<sup>2</sup> (ABOUT)  
 SITE LEVEL BEFORE FILLING : +24.3 mPD (ABOUT)  
 SOILED GROUND AREA : 973 m<sup>2</sup> (ABOUT)



## LEGEND

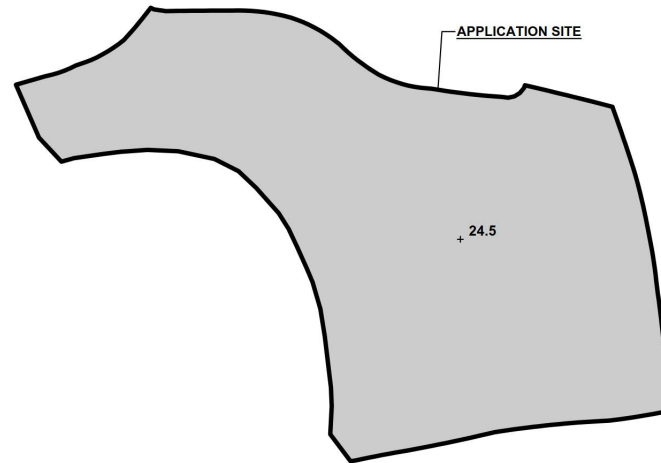
APPLICATION SITE  
 + 24.3 SITE LEVEL

\*SITE BOUNDARY FOR IDENTIFICATION PURPOSE ONLY.

# FILLING OF LAND AREA OF THE APPLICATION SITE

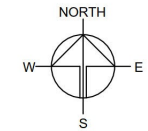
APPLICATION SITE AREA : 973 m<sup>2</sup> (ABOUT)  
 COVERED BY STRUCTURE : 193 m<sup>2</sup> (ABOUT)  
 EXISTING SITE LEVEL : +24.5 mPD (ABOUT)  
 DEPTH OF LAND FILLING : NOT MORE THAN 0.2 m  
 MATERIAL OF LAND FILLING : CONCRETE  
 PURPOSE OF LAND FILLING : SITE FORMATION OF STRUCTURES  
 VEHICLE DISPLAYING AREA,  
 CIRCULATION AND PARKING SPACES

\*THE APPLICATION SITE HAS ALREADY BEEN HARD-PAVED. NO FURTHER FILLING OF LAND IS REQUIRED TO FACILITATE THE PROPOSED DEVELOPMENT.



## LEGEND

APPLICATION SITE  
 + 24.5 SITE LEVEL  
 FILLING OF LAND AREA



## PLANNING CONSULTANT



## PROJECT

PROPOSED TEMPORARY SHOP AND SERVICES WITH ANCILLARY WORKSHOP AND ASSOCIATED FILLING OF LAND FOR A PERIOD OF 3 YEARS

## SITE LOCATION

LOT 286 RP AND 287 RP (PART) IN D.D. 112, KAM SHEUNG ROAD, SHEK KONG, YUEN LONG, NEW TERRITORIES

## SCALE

1:500 @ A4

## DRAWN BY

DATE

## REVISED BY

DATE

## APPROVED BY

DATE

## DWG. TITLE

FILLING OF LAND

## DWG NO.

PLAN 5

## VER.

001

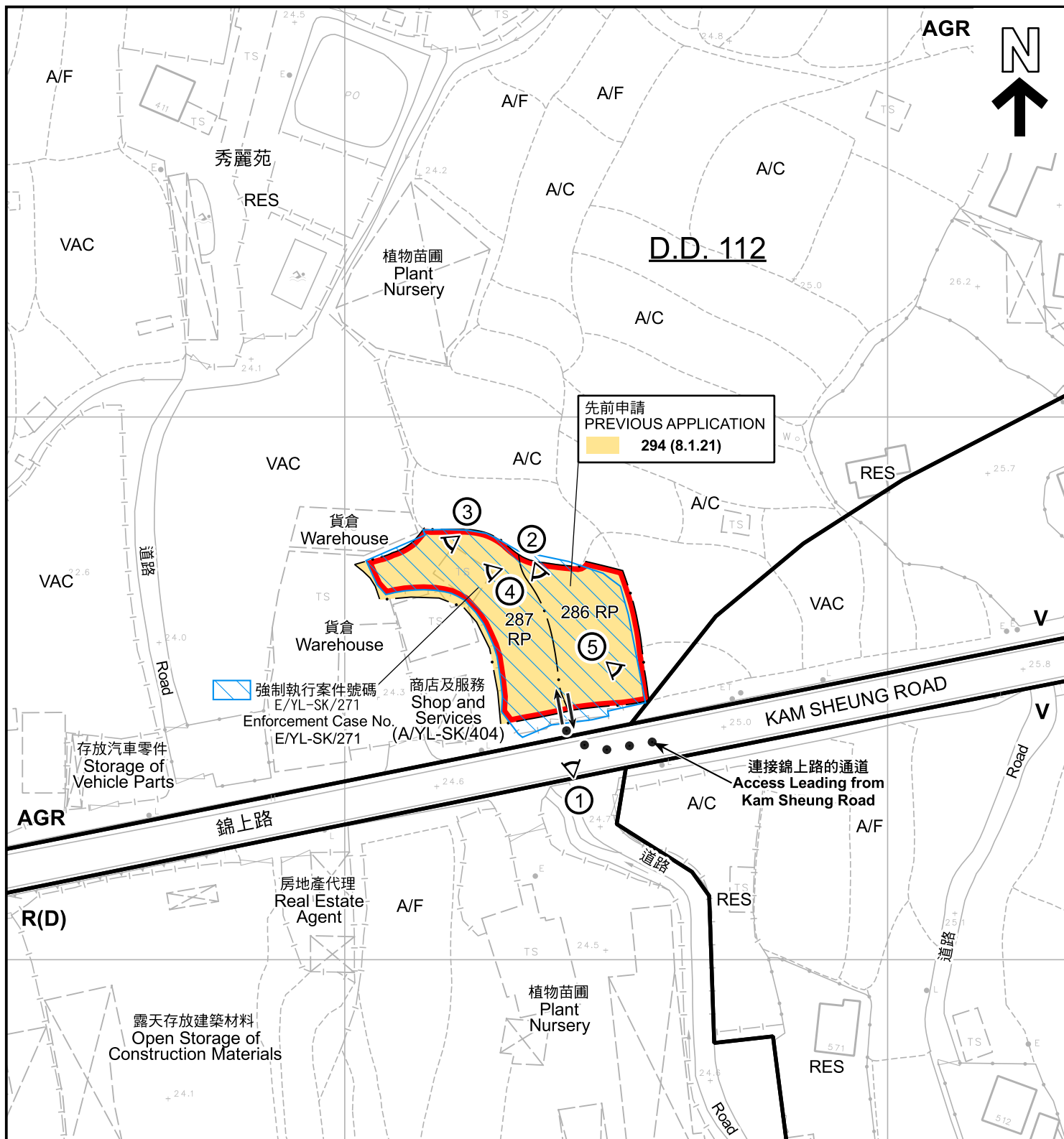
(摘錄自申請人於 2.5.2025 呈交的申請書)  
 (Extract from Applicant's  
 Submission of 2.5.2025)

參考編號  
 REFERENCE No.  
 A/YL-SK/416

繪圖  
 DRAWING  
 A - 2







#### 圖例 LEGEND

	申請地點 (界線只作識別用) APPLICATION SITE (BOUNDARY FOR IDENTIFICATION PURPOSE ONLY)
<b>R(D)</b>	住宅(丁類) RESIDENTIAL (GROUP D)
<b>V</b>	鄉村式發展 VILLAGE TYPE DEVELOPMENT
<b>AGR</b>	農業 AGRICULTURE

<b>A/C</b>	常耕農地 CULTIVATED AGRICULTURAL LAND
<b>A/F</b>	休耕農地 FALLOW AGRICULTURAL LAND
<b>RES</b>	住用構築物 RESIDENTIAL STRUCTURES
<b>VAC</b>	空置 VACANT

	實地照片的觀景點 VIEWING POINT OF SITE PHOTO
	入口/出口 INGRESS / EGRESS

#### 註釋 Note :

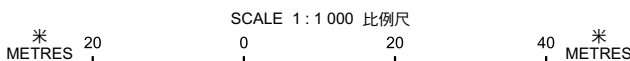
2025年5月8日勘測的土地用途

Land uses shown on this plan are in accordance with the land use survey conducted by the Planning Department on 8.5.2025

#### 平面圖 SITE PLAN

臨時商店及服務行業連附屬工場及相關填土工程 (為期3年)  
新界元朗石崗錦上路丈量約份第112約地段第286號餘段及第287號餘段 (部分)  
TEMPORARY SHOP AND SERVICES WITH ANCILLARY WORKSHOP AND ASSOCIATED FILLING OF LAND FOR A PERIOD OF 3 YEARS  
LOTS 286 RP AND 287 RP (PART) IN D.D. 112, KAM SHEUNG ROAD, SHEK KONG, YUEN LONG, NEW TERRITORIES

本摘要圖於2025年6月16日擬備，  
所根據的資料為測量圖編號6-NE-19A  
EXTRACT PLAN PREPARED ON 16.6.2025  
BASED ON SURVEY SHEET No. 6-NE-19A



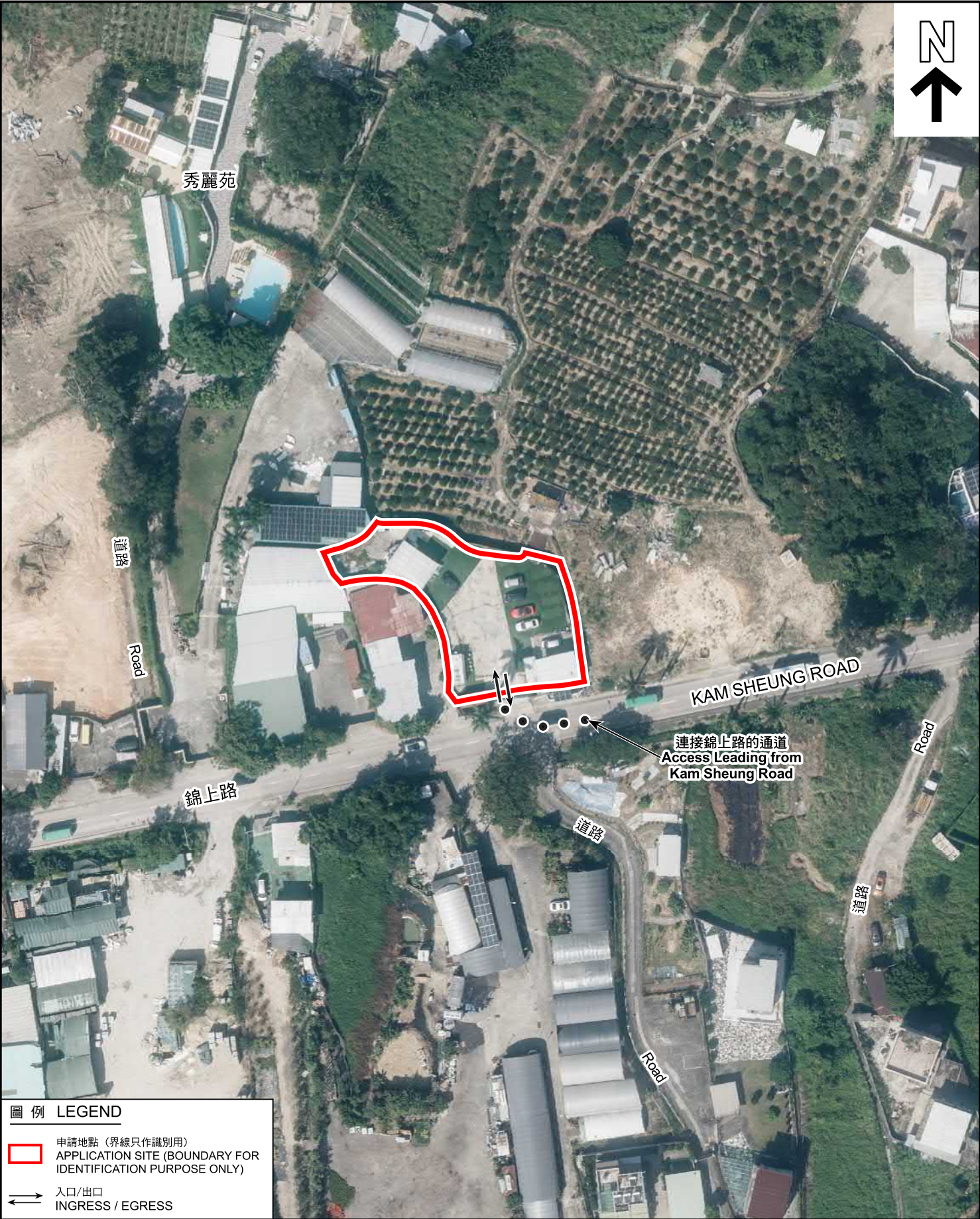
規劃署  
PLANNING  
DEPARTMENT



參考編號  
REFERENCE No.  
A/YL-SK/416

圖 PLAN  
A-2





圖例 LEGEND

 申請地點 (界線只作識別用)  
APPLICATION SITE (BOUNDARY FOR IDENTIFICATION PURPOSE ONLY)

 入口/出口  
INGRESS / EGRESS

本摘要圖於2025年6月5日擬備，所根據的資料為地政總署於2024年10月24日拍得的航攝照片編號 E238106C

EXTRACT PLAN PREPARED ON 5.6.2025  
BASED ON AERIAL PHOTO No. E238106C  
TAKEN ON 24.10.2024  
BY LANDS DEPARTMENT

航攝照片 AERIAL PHOTO

臨時商店及服務行業連附屬工場及相關填土工程 (為期3年)  
新界元朗石崗錦上路丈量約份第112約地段第286號餘段及第287號餘段 (部分)  
TEMPORARY SHOP AND SERVICES WITH ANCILLARY WORKSHOP AND  
ASSOCIATED FILLING OF LAND FOR A PERIOD OF 3 YEARS  
LOTS 286 RP AND 287 RP (PART) IN D.D. 112, KAM SHEUNG ROAD,  
SHEK KONG, YUEN LONG, NEW TERRITORIES

規劃署  
PLANNING  
DEPARTMENT



參考編號  
REFERENCE No.  
A/YL-SK/416

圖 PLAN  
A-3





申請地點界線只作識別用  
APPLICATION SITE BOUNDARY FOR IDENTIFICATION PURPOSE ONLY

### 實地照片 SITE PHOTOS

本圖於2025年6月4日擬備，所根據的資料為攝於2025年5月9日的實地照片  
PLAN PREPARED ON 4.6.2025  
BASED ON SITE PHOTO  
TAKEN ON 9.5.2025

臨時商店及服務行業連附屬工場及相關填土工程（為期3年）  
新界元朗石崗錦上路丈量約份第112約地段第286號餘段及第287號餘段（部分）  
TEMPORARY SHOP AND SERVICES WITH ANCILLARY WORKSHOP AND  
ASSOCIATED FILLING OF LAND FOR A PERIOD OF 3 YEARS  
LOTS 286 RP AND 287 RP (PART) IN D.D. 112, KAM SHEUNG ROAD,  
SHEK KONG, YUEN LONG, NEW TERRITORIES

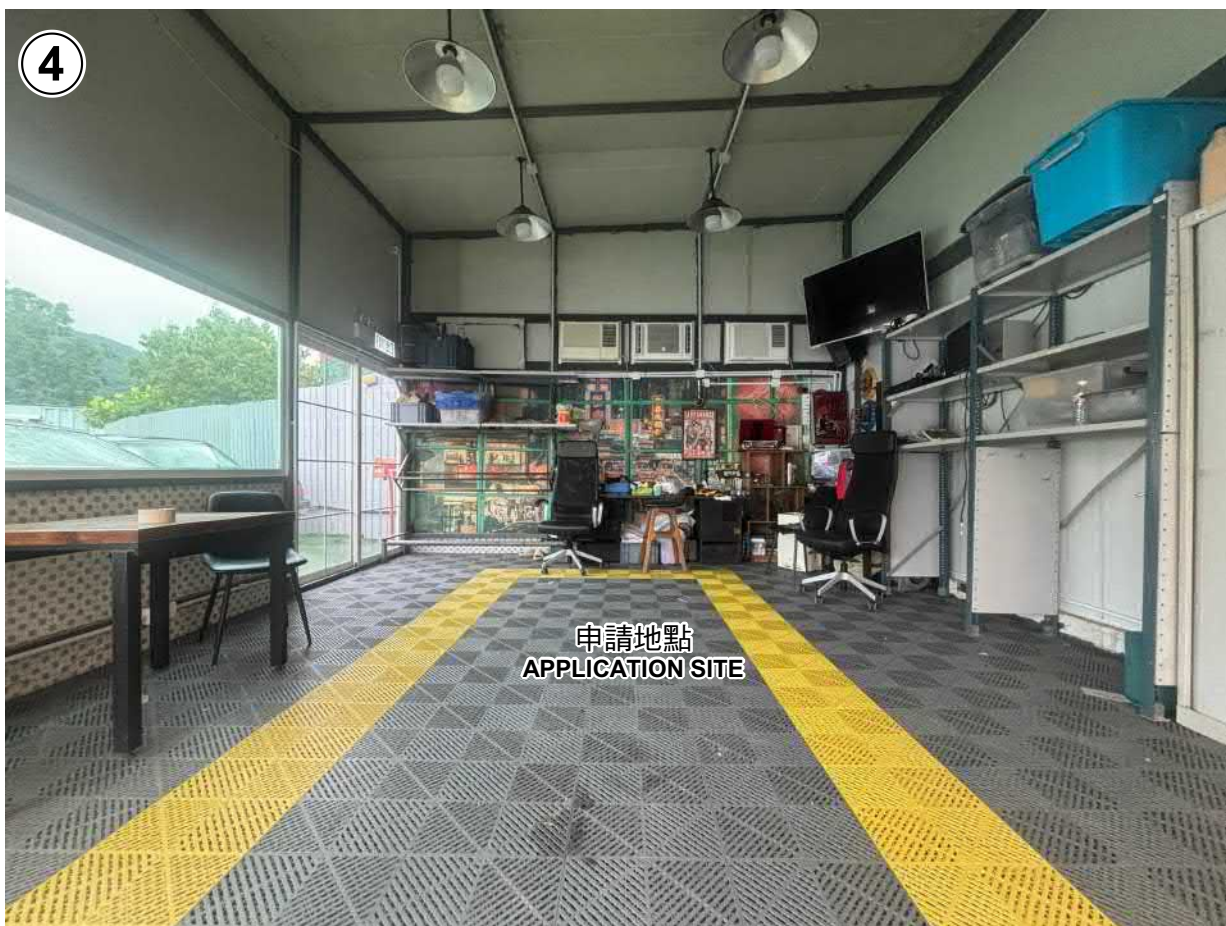
規劃署  
PLANNING  
DEPARTMENT



參考編號  
REFERENCE No.  
A/YL-SK/416

圖 PLAN  
A-4a





申請地點界線只作識別用  
APPLICATION SITE BOUNDARY FOR IDENTIFICATION PURPOSE ONLY

### 實地照片 SITE PHOTOS

臨時商店及服務行業連附屬工場及相關填土工程（為期3年）  
新界元朗石崗錦上路丈量約份第112約地段第286號餘段及第287號餘段（部分）  
TEMPORARY SHOP AND SERVICES WITH ANCILLARY WORKSHOP AND  
ASSOCIATED FILLING OF LAND FOR A PERIOD OF 3 YEARS  
LOTS 286 RP AND 287 RP (PART) IN D.D. 112, KAM SHEUNG ROAD,  
SHEK KONG, YUEN LONG, NEW TERRITORIES

規劃署  
PLANNING  
DEPARTMENT



參考編號  
REFERENCE No.  
A/YL-SK/416

圖 PLAN  
A-4b

本圖於2025年6月17日擬備，  
所根據的資料為攝於  
2025年5月9日及6月17日的實地照片  
PLAN PREPARED ON 17.6.2025  
BASED ON SITE PHOTOS  
TAKEN ON 9.5.2025 & 17.6.2025