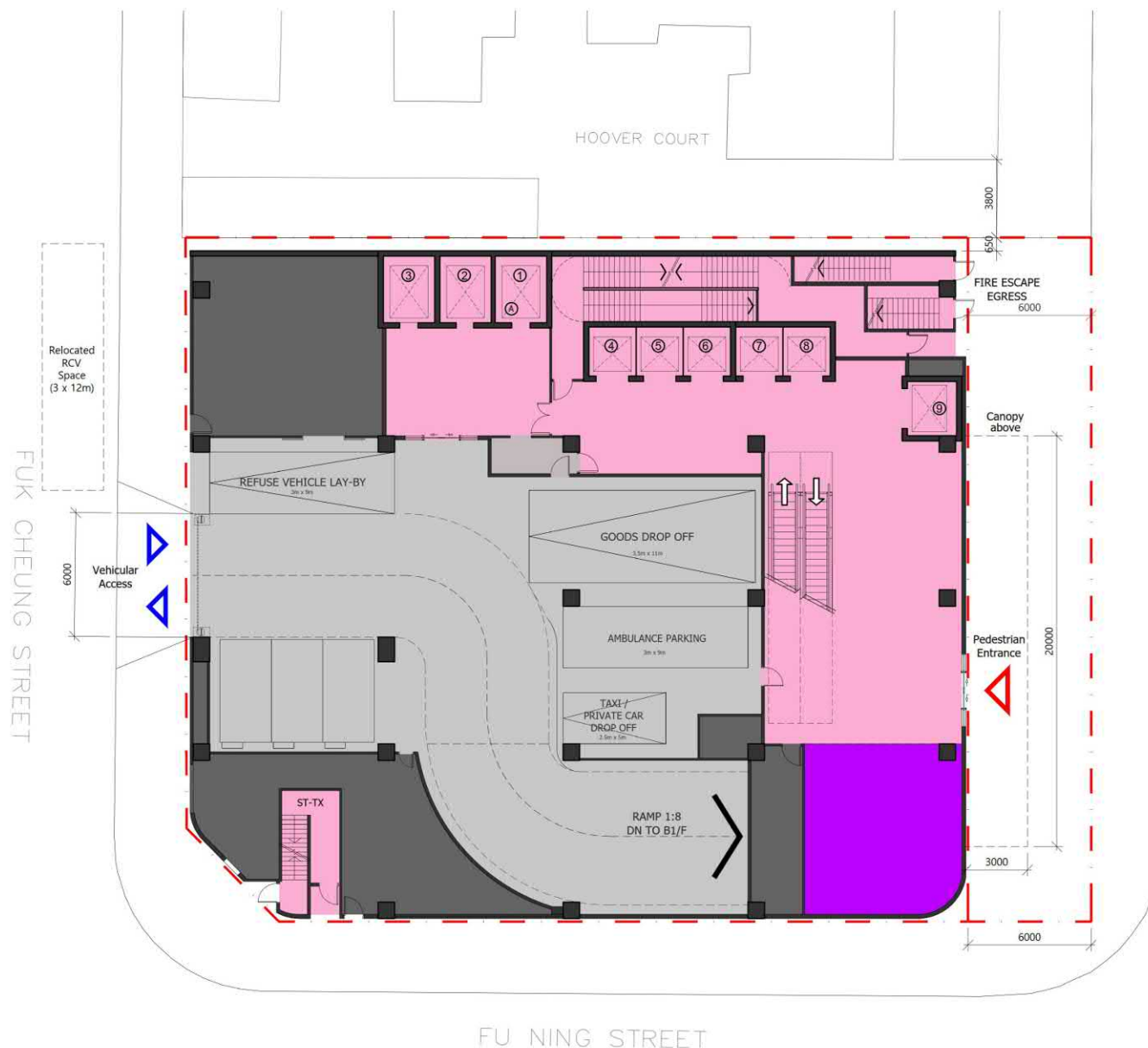


G/F



ANCILLARY SHOP & SERVICES /
EATING PLACES

LIFT/CIRCULATION AREA/
STAIRCASE/TOILET

MEDICAL ACCOMMODATION/
ANCILLARY FACILITIES &
SERVICES (MEDICAL)/
STOREROOM

CANTEEN/
ANCILLARY FACILITIES
(NON-MEDICAL)

FLAT ROOF

CARPARK/ CAR LIFT
DRIVEWAY/LAYBY/LOADING
& UNLOADING

BUILDING SERVICES & PLANT
/E&M

Lift Legend:

(A) Fireman's Lift

Patient/ Service Lift (L1 - L3)
(L1: B2/F to R/F;
L2: B2/F to 20/F;
L3: G/F to 20/F)

Passenger Lifts (L4 - L6)
(B2/F to 20/F)

Passenger Lifts (L7 - L8)
(G/F to 13/F)

Passenger Lifts (L9)
(G/F to 5/F)

- 3 nos Car Parking
- 1 no HGV Parking
- 1 no Ambulance Parking / Lay-by
- 1 no Taxi / Private Car Lay-by
- 1 no Refuse Vehicle Lay-by

ARGYLE STREET

FUK CHEUNG STREET

FU NING STREET

AD+RG

architecture design and research group ltd

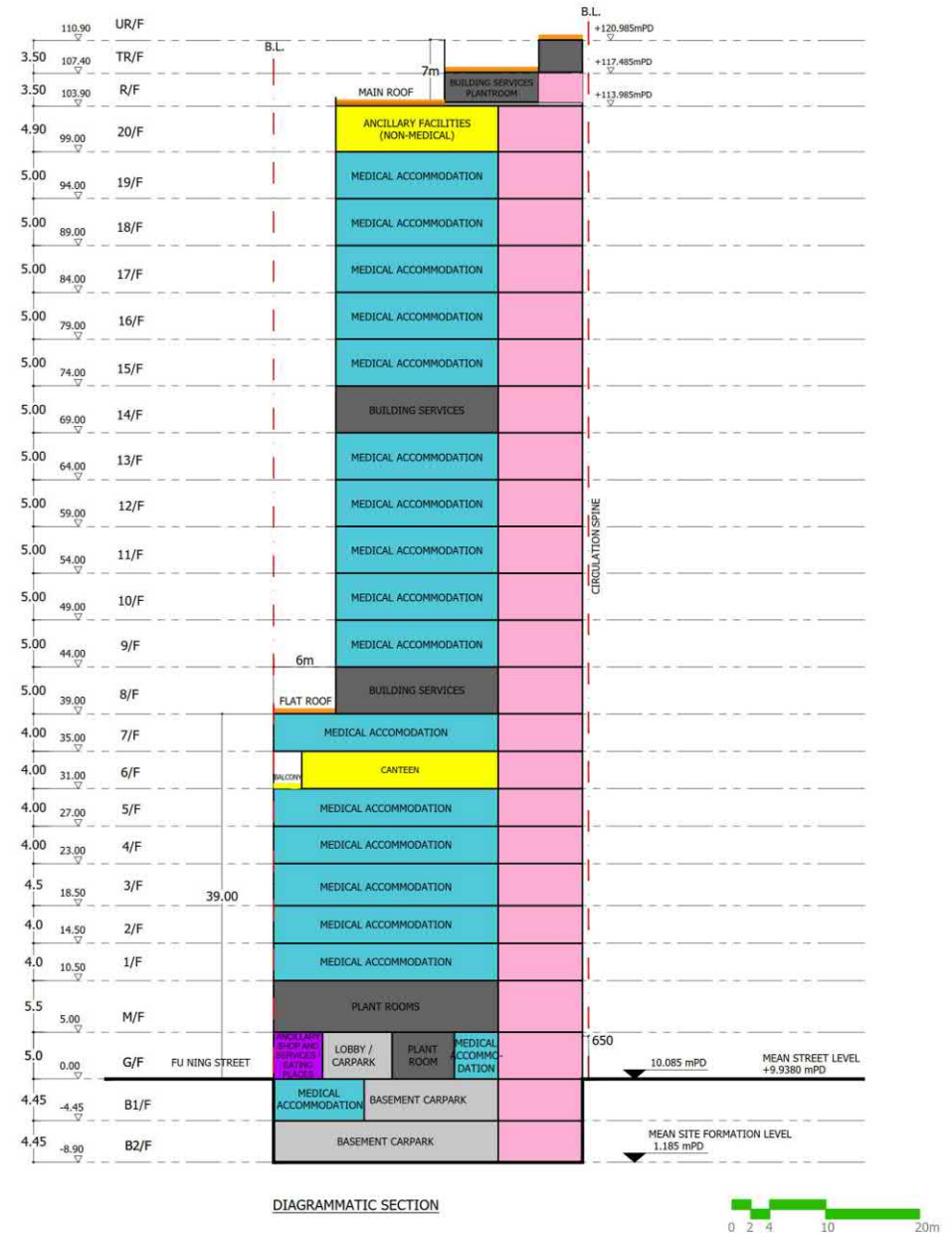
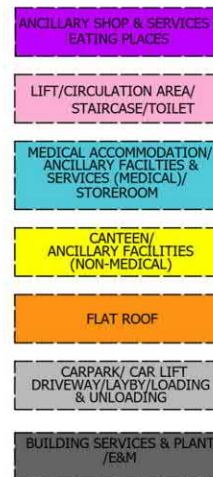
DRAWING NO.: A1323/A03
(INDICATIVE LAYOUT FOR REFERENCE ONLY, SUBJECT TO DETAILED LAYOUT DESIGN)

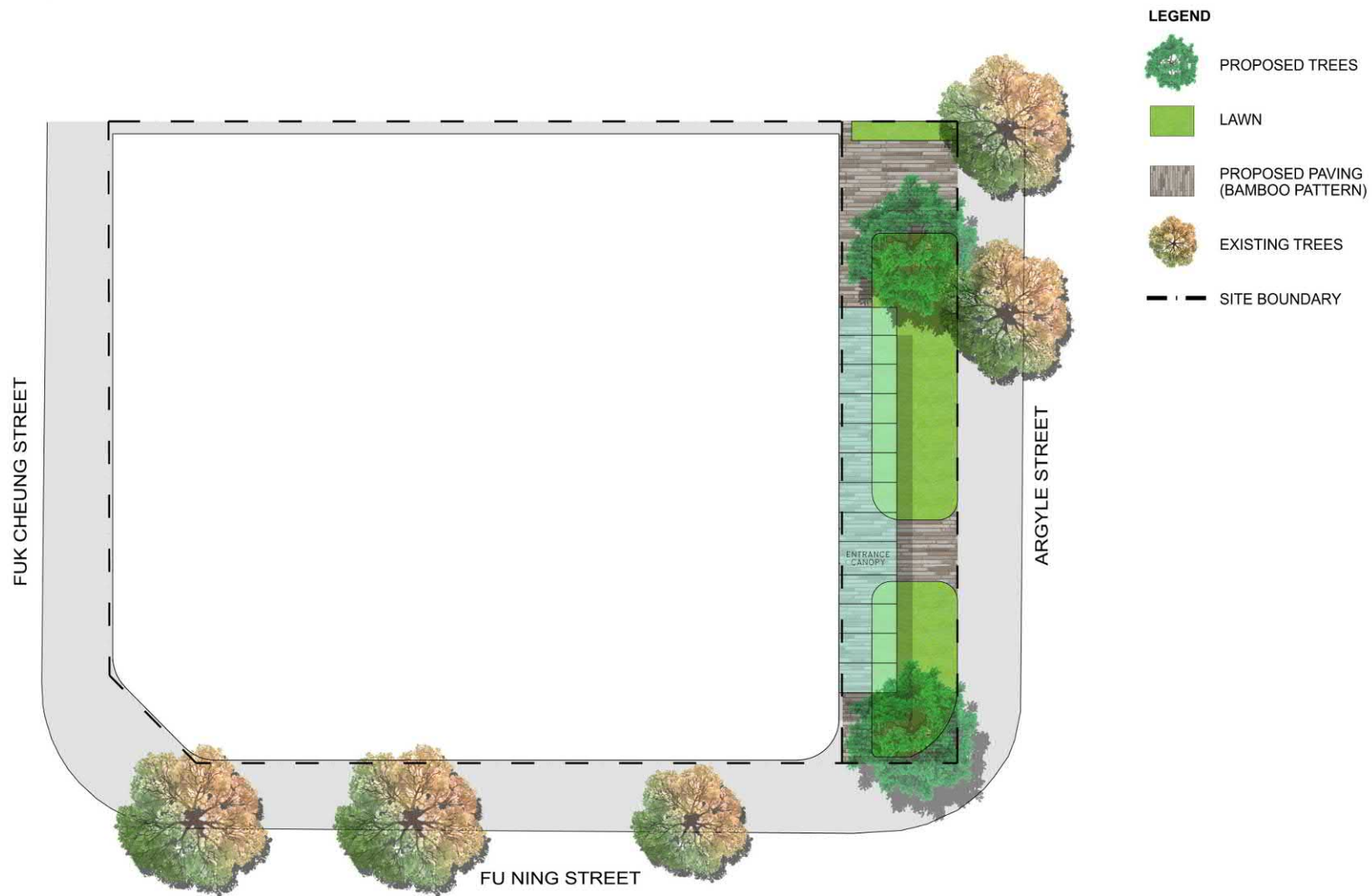


(資料來源：由申請人於2025年5月2日提交)
(Source : Submitted by the applicant on 2.5.2025)

參考編號
REFERENCE No.
Y/K10/6

繪圖
DRAWING
Z - 1





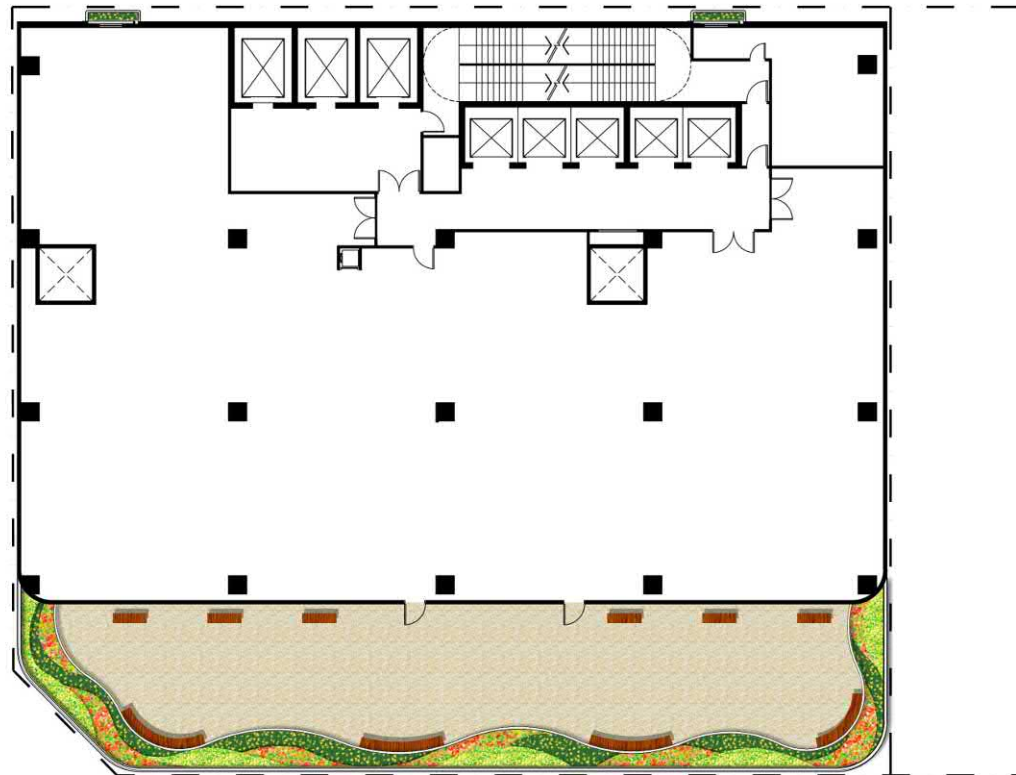
(資料來源：由申請人提交)
 (Source : Submitted by the applicant)

參考編號
 REFERENCE No.
 Y/K10/6

繪圖
 DRAWING
 Z - 3

LEGEND

-  PROPOSED FLOWERING SHRUB PLANTING
-  PODIUM DECK PAVING
-  OUTDOOR SEATING
-  SITE BOUNDARY



8/F LANDSCAPE MASTER PLAN

TOTAL 8/F AREA = 1,192.86 m²
 TOTAL PLANTING AREA = 56.79 m² (including 1.6m² Planter Box Areas)
 *Remarks: Planter Boxes are provided on M/F to 8/F



0 1 2 3 4 5 10m

(資料來源：由申請人提交)
 (Source : Submitted by the applicant)

參考編號
 REFERENCE No.
 Y/K10/6

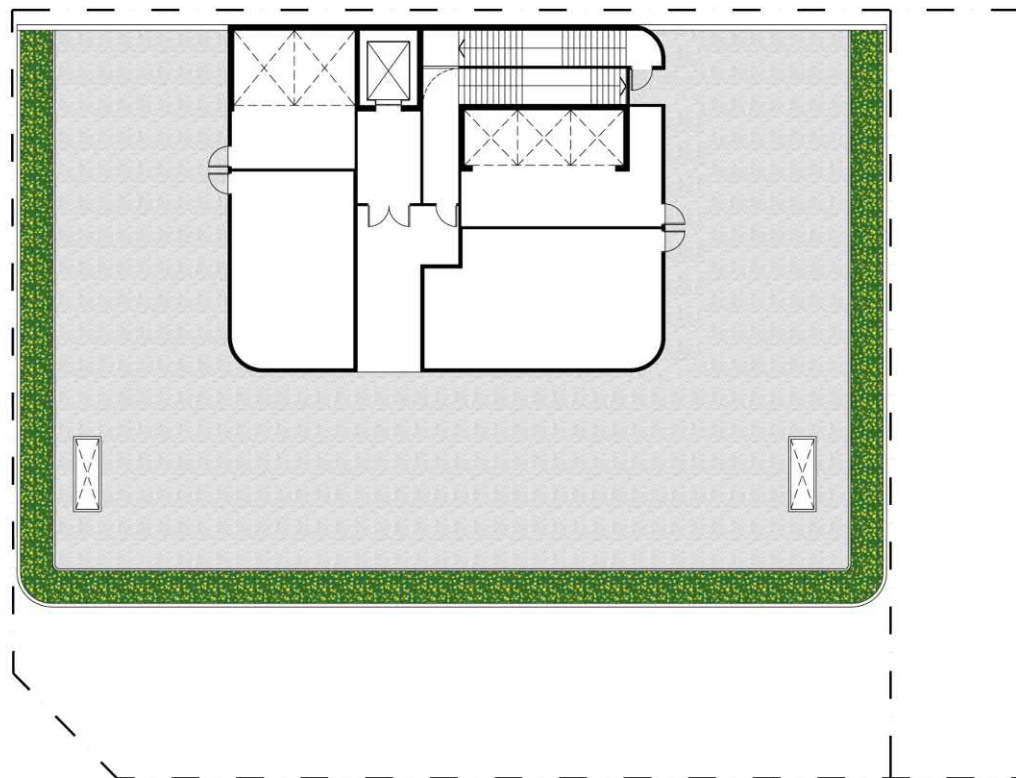
繪圖
 DRAWING
 Z - 4

LEGEND

 SHRUB PLANTING

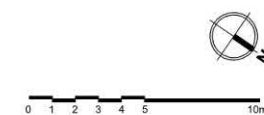
 RF PAVING

 SITE BOUNDARY



RF LANDSCAPE MASTER PLAN

TOTAL RF AREA = 927.86 m²
TOTAL PLANTING AREA = 117.21 m²



(資料來源：由申請人提交)
(Source : Submitted by the applicant)

參考編號
REFERENCE No.
Y/K10/6

繪圖
DRAWING
Z - 5



ELEVATION ALONG FU NING STREET SHOWING VERTICAL PLANTING

TOTAL VERTICAL PLANTING AREA = 88.05 m²

0 1 2 3 4 5 10m

(資料來源：由申請人提交)
(Source : Submitted by the applicant)

參考編號
REFERENCE No.
Y/K10/6

繪圖
DRAWING
Z - 6



ELEVATION VIEW FROM HOOVER COURT SHOWING VERTICAL PLANTERS

TOTAL PLANTER BOX AREA = 14.40m²

(資料來源：由申請人提交)
(Source : Submitted by the applicant)

參考編號
REFERENCE No.
Y/K10/6

繪圖
DRAWING
Z - 7

Legend

- ❶ A 6m voluntary above-ground full-height setback from Argyle Street to provide a breathing corridor and for streetscape enhancement
- ❷ A 6m wide tower setback above podium level at Fu Ning Street for a wider visual corridor along Forfar Road
- ❸ Circulation splay at Fu Ning Street / Fuk Cheung Street to improve pedestrian circulation and visual permeability
- ❹ A 20m All-weather canopy to ease visitor waiting for taxi pick-up / drop off and to facilitate circulation for pedestrians waiting at the traffic lights and potential security control in the future
- ❺ At-grade tree plantings with lawn coverage on G/F to enhance streetscape amenity and promote visual interest and pedestrian comfort
- ❻ Communal podium garden with outdoor seatings on 8/F to act as breathing space for Hospital staff and visitors (under management control) and to improve the visual connection to the street
- ❼ A balcony with edge planting on 6/F to allow for visual relief
- ❽ Landscape Treatments at R/F to promote visual interest (*Please see Appendix 2 for the Conceptual Landscape Proposal*)
- ❾ Vertical Greening at façade facing Fu Ning Street to break down the visual mass and facilitate visual permeability
- ❿ Planters on the western façade facing Hoover Court at levels M/F to 8/F to alleviate the potential adverse visual impacts
- ⓫ Green coloured pattern wall mural on western facade facing Hoover Court at levels G/F to 8/F to improve aesthetic
- ⓬ A minimum 650mm building setback from the southwestern lot boundary is provided to minimise potential impacts on air ventilation and sunlight penetration
- ⓭ Sensitive building façade treatment with contrasting wall tones and variations in façade design to create visual interest

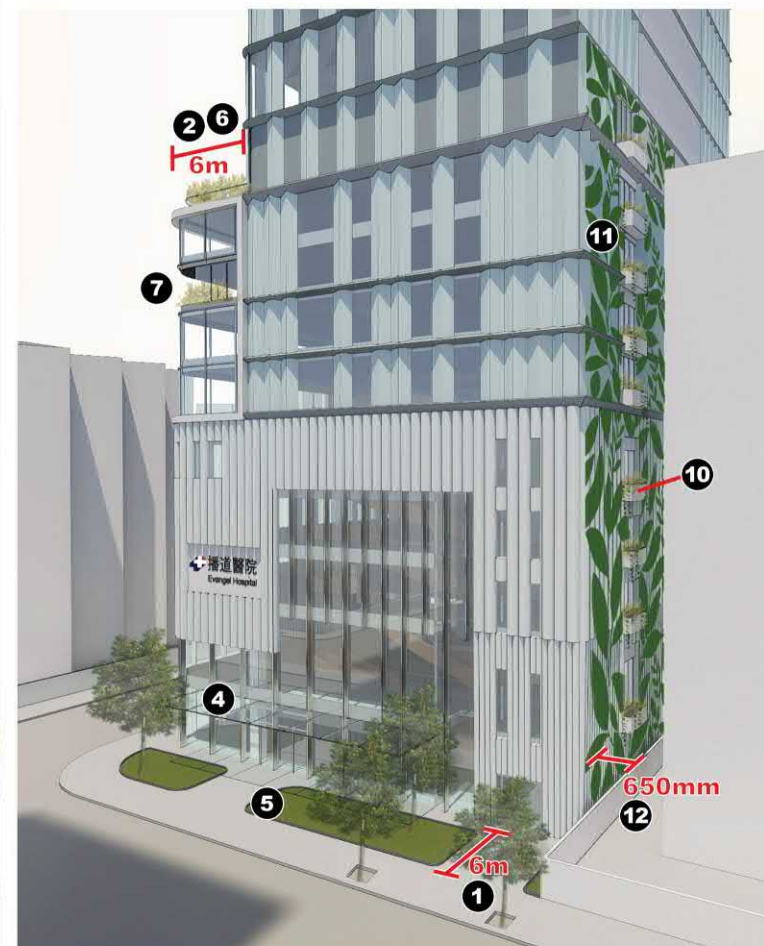


FIGURE 4.3 DESIGN FEATURES (INDICATIVE ONLY)

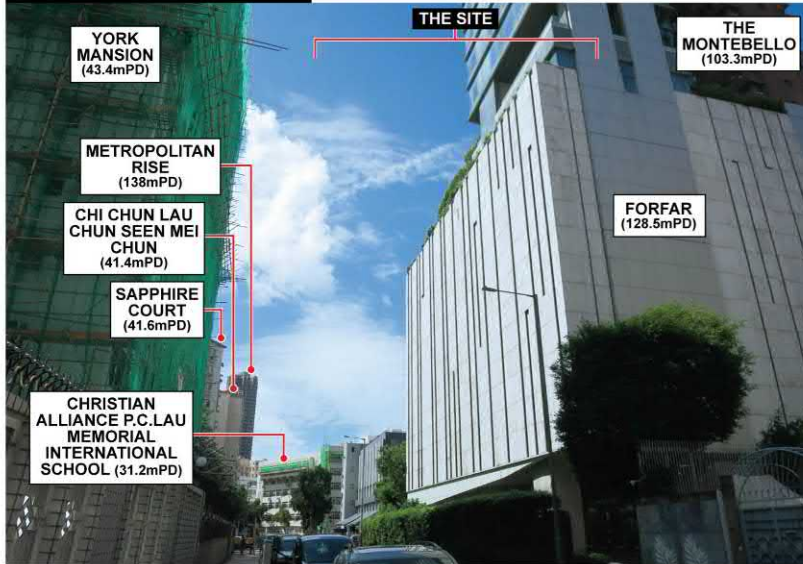
ASFNS

(資料來源：由申請人於2025年5月2日提交)
(Source : Submitted by the applicant on 2.5.2025)

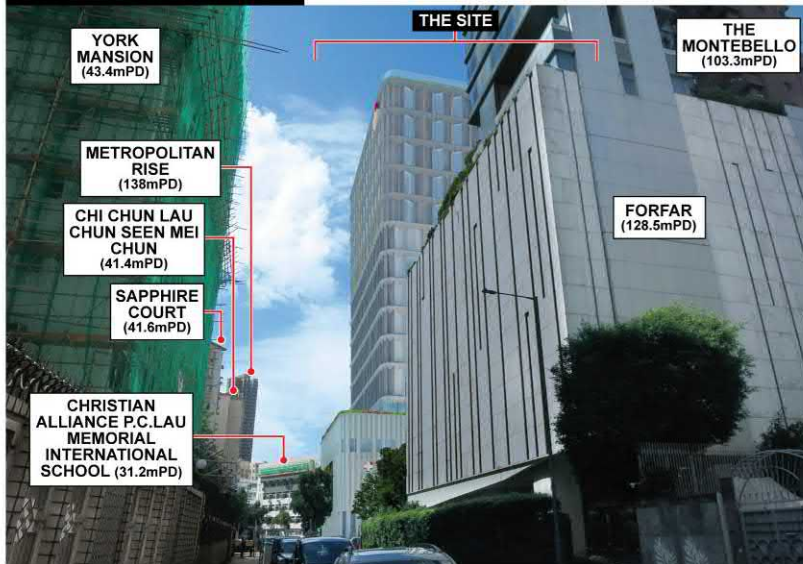
參考編號
REFERENCE No.
Y/K10/6

繪圖
DRAWING
Z - 8

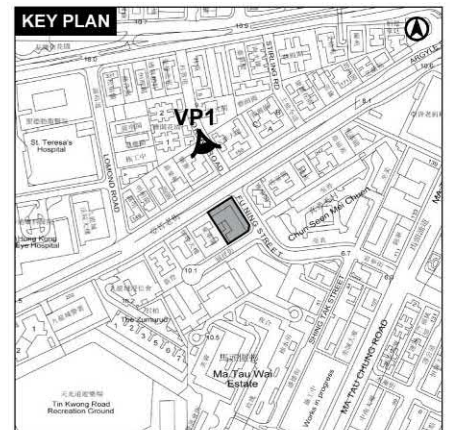
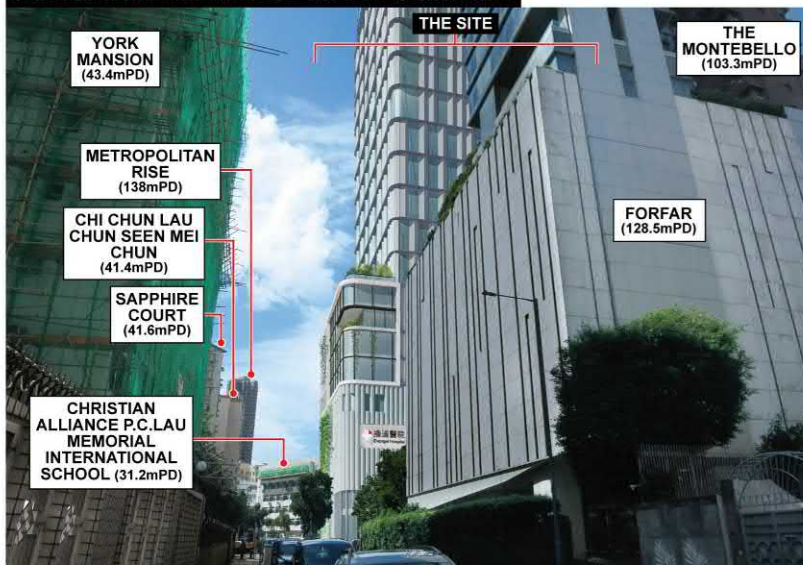
EXISTING CONDITION



APPROVED SCHEME



INDICATIVE DEVELOPMENT SCHEME



ASFNS

FIGURE 10 VIEWPOINT 1 : VIEW FROM THE SIDEWALK OF FORFAR ROAD

(資料來源：由申請人於2025年5月2日提交)
(Source: Submitted by the applicant on 2.5.2025)

參考編號
REFERENCE No.
Y/K10/6

繪圖
DRAWING
Z - 9

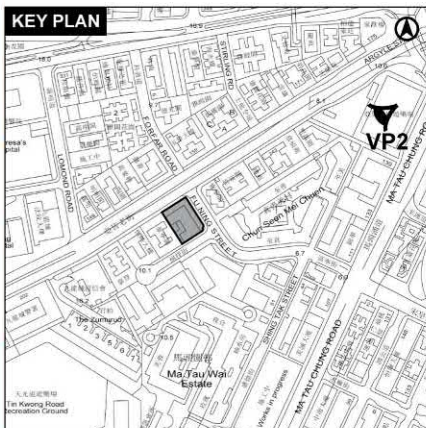
EXISTING CONDITION



APPROVED SCHEME



INDICATIVE DEVELOPMENT SCHEME



ASFNS

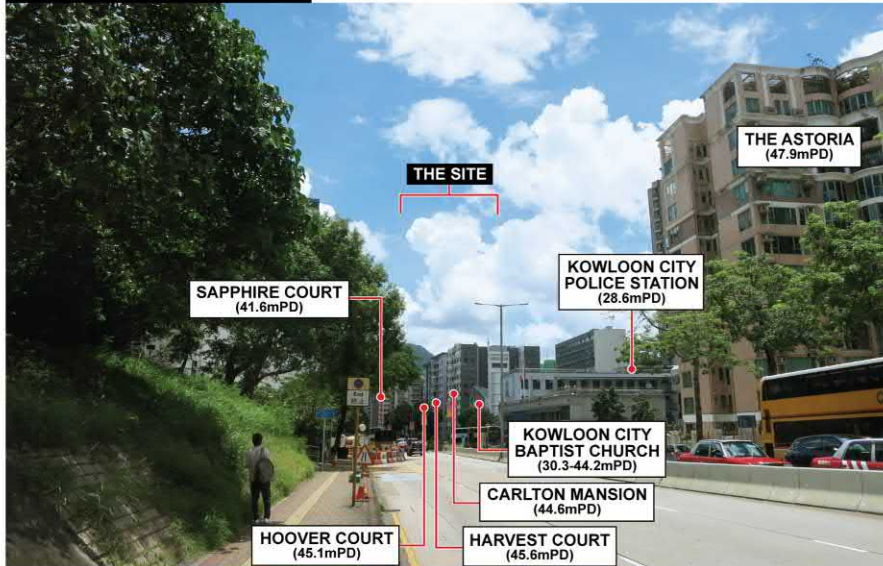
FIGURE 11 VIEWPOINT 2 : VIEW FROM THE SOCCER PITCH WITHIN ARGYLE STREET PLAYGROUND

(資料來源：由申請人於2025年5月2日提交)
(Source: Submitted by the applicant on 2.5.2025)

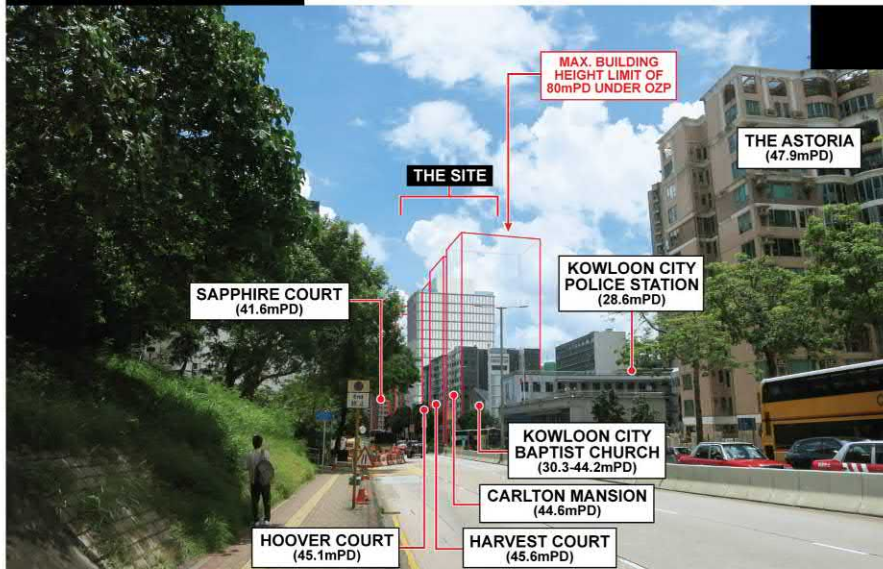
參考編號
REFERENCE No.
Y/K10/6

繪圖
DRAWING
Z - 10

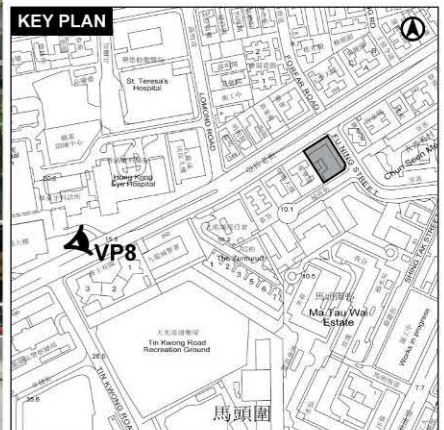
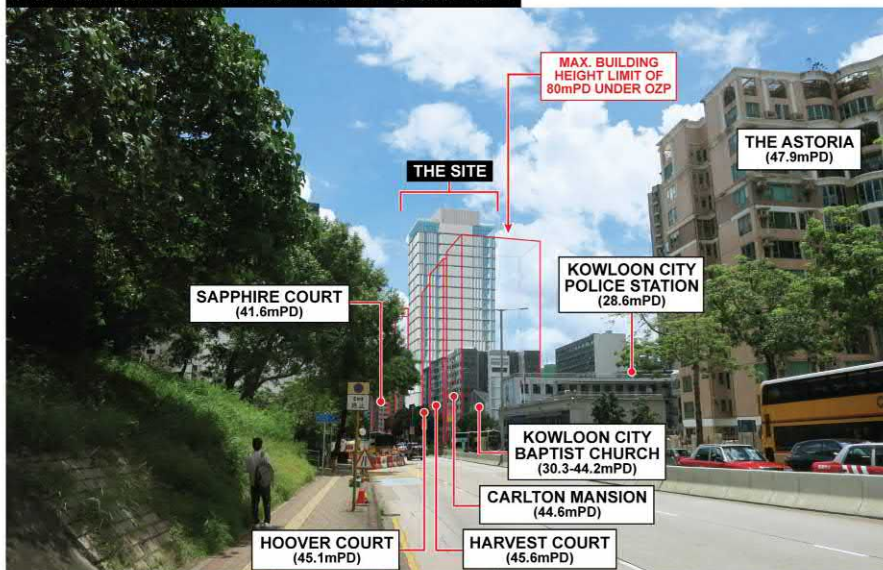
EXISTING CONDITION



APPROVED SCHEME



INDICATIVE DEVELOPMENT SCHEME



ASFNS

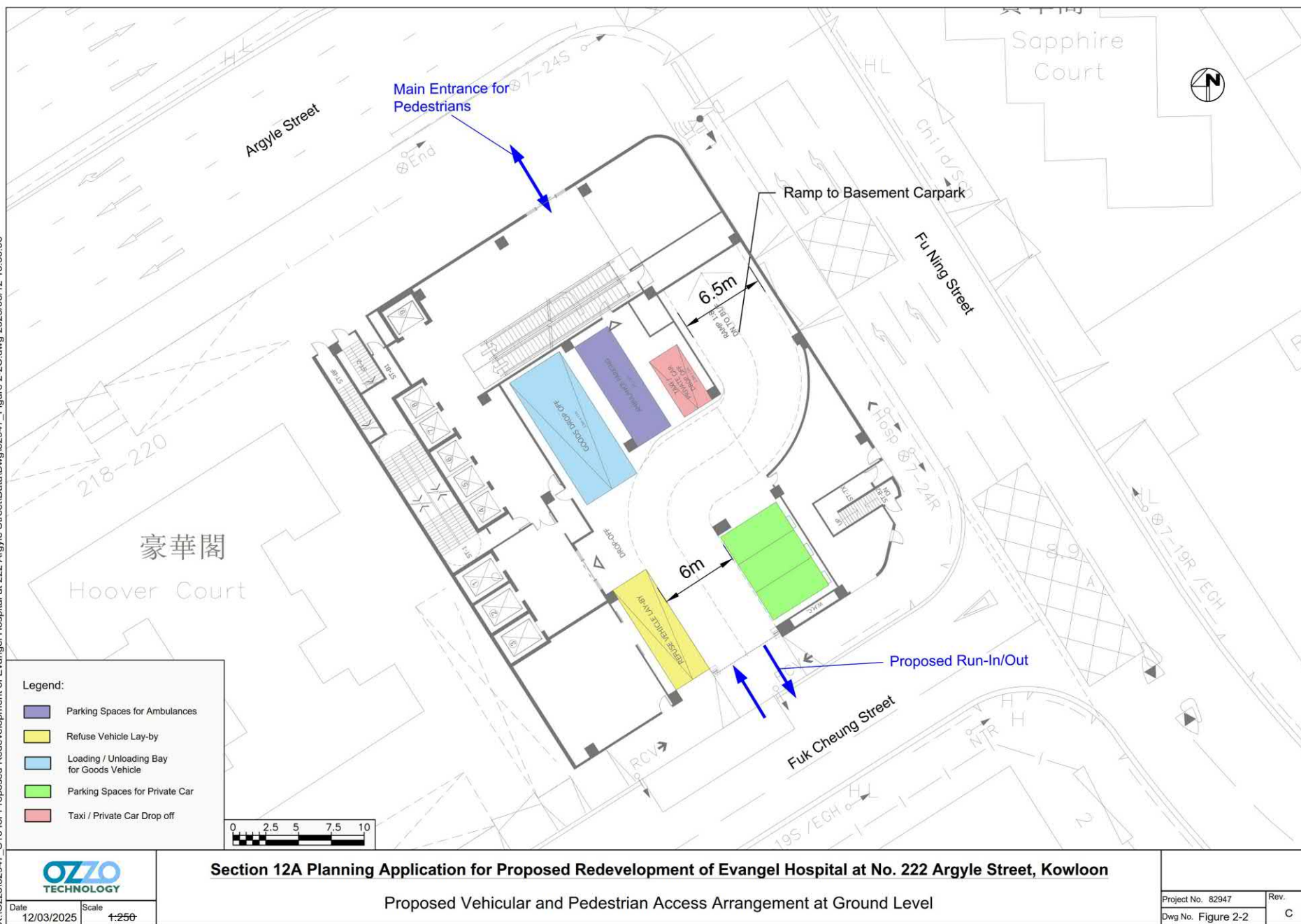
FIGURE 14 VIEWPOINT 8 : VIEW FROM FOOTPATH OUTSIDE HOSPITAL AUTHORITY BUILDING

(資料來源：由申請人於2025年5月2日提交)
(Source: Submitted by the applicant on 2.5.2025)

參考編號
REFERENCE No.
Y/K10/6

繪圖
DRAWING
Z - 11

X:\Ozzo\82947_S16 for Proposed Redevelopment of Evangel Hospital at 222 Argyle Street\Drawings\Figure 2-2C.dwg 2025/03/12 16:30:06

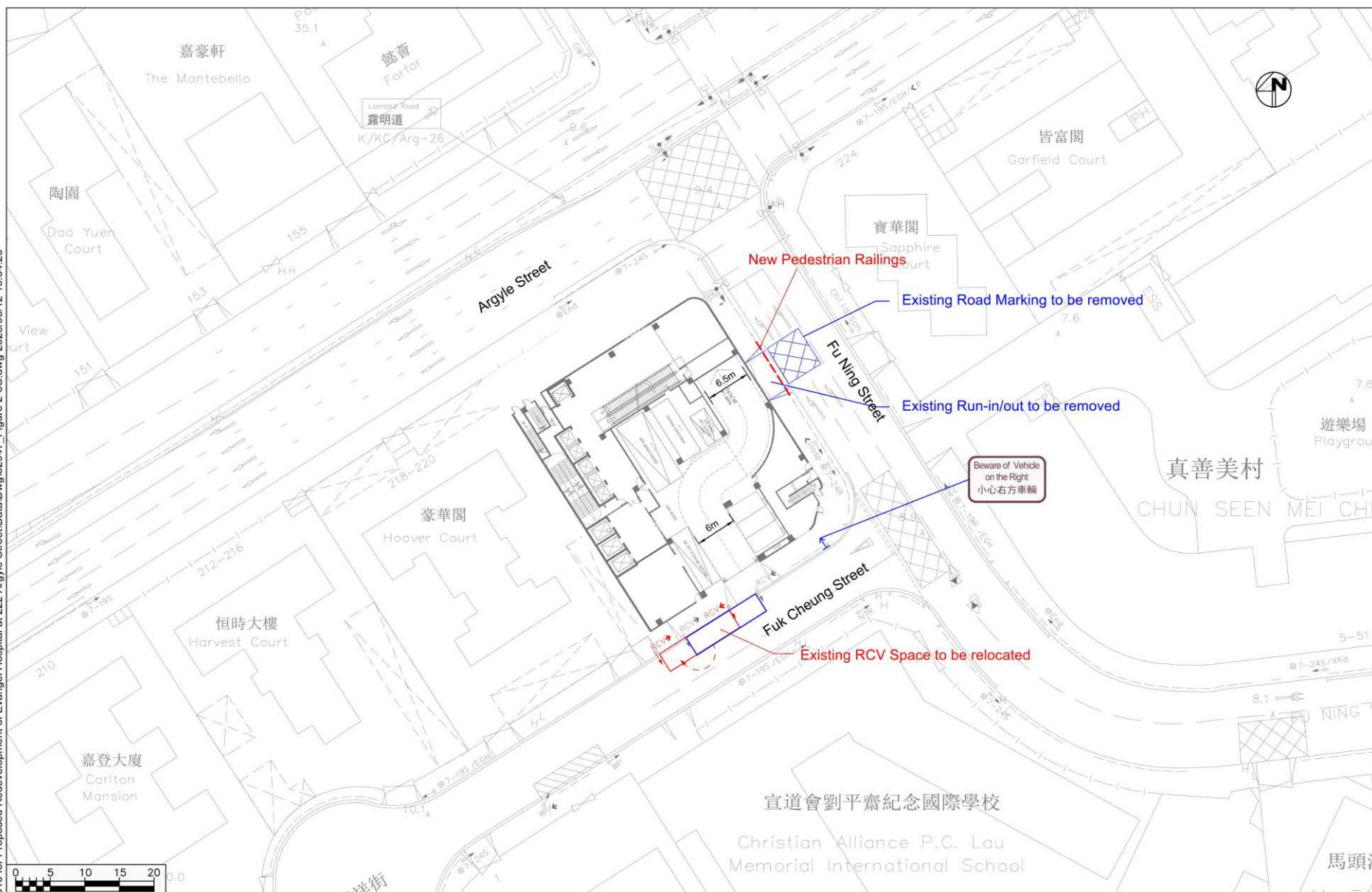


(資料來源：由申請人提交)
(Source : Submitted by the applicant)

參考編號
REFERENCE No.
Y/K10/6

繪圖
DRAWING
Z - 12

X:\Oz82947_S16 for Proposed Redevelopment of Evangel Hospital at 222 Argyle Street\Drawings\82947_Figure 2-3C.dwg 2025/03/12 16:34:23



Section 12A Planning Application for Proposed Redevelopment of Evangel Hospital at No. 222 Argyle Street, Kowloon

Existing Road Markings / Street Furniture to be Modified

Project No. 82947	Rev.
Dwg No. Figure 2-3	C

參考編號
REFERENCE No.
Y/K10/6

繪圖
DRAWING
Z - 13

(資料來源：由申請人提交)
(Source : Submitted by the applicant)



圖例 LEGEND

- 4 (9.7.21) 獲批准的申請
APPROVED APPLICATION
- 4 (9.7.21) 會議日期
DATE OF MEETING
- 申請編號
APPLICATION NUMBER

申請地點界線只作識別用
APPLICATION SITE BOUNDARY
FOR IDENTIFICATION PURPOSE ONLY

位置圖 LOCATION PLAN

修訂位於九龍城亞皆老街上222號九龍內地地段第8813號
一幅「政府、機構或社區」用地的建築物高度限制，
由5層改為主水平基準上114米

九龍九龍城亞皆老街上222號九龍內地地段第8813號
TO AMEND THE BUILDING HEIGHT RESTRICTION
ON A "GOVERNMENT, INSTITUTION OR COMMUNITY" SITE
AT KOWLOON INLAND LOT 8813, 222 ARGYLE STREET, KOWLOON CITY
FROM 5 STOREYS TO 114 METRES ABOVE PRINCIPAL DATUM
KOWLOON INLAND LOT 8813, 222 ARGYLE STREET, KOWLOON CITY, KOWLOON

SCALE 1:5 000 比例尺

米 100 0 100 200 米
METRES

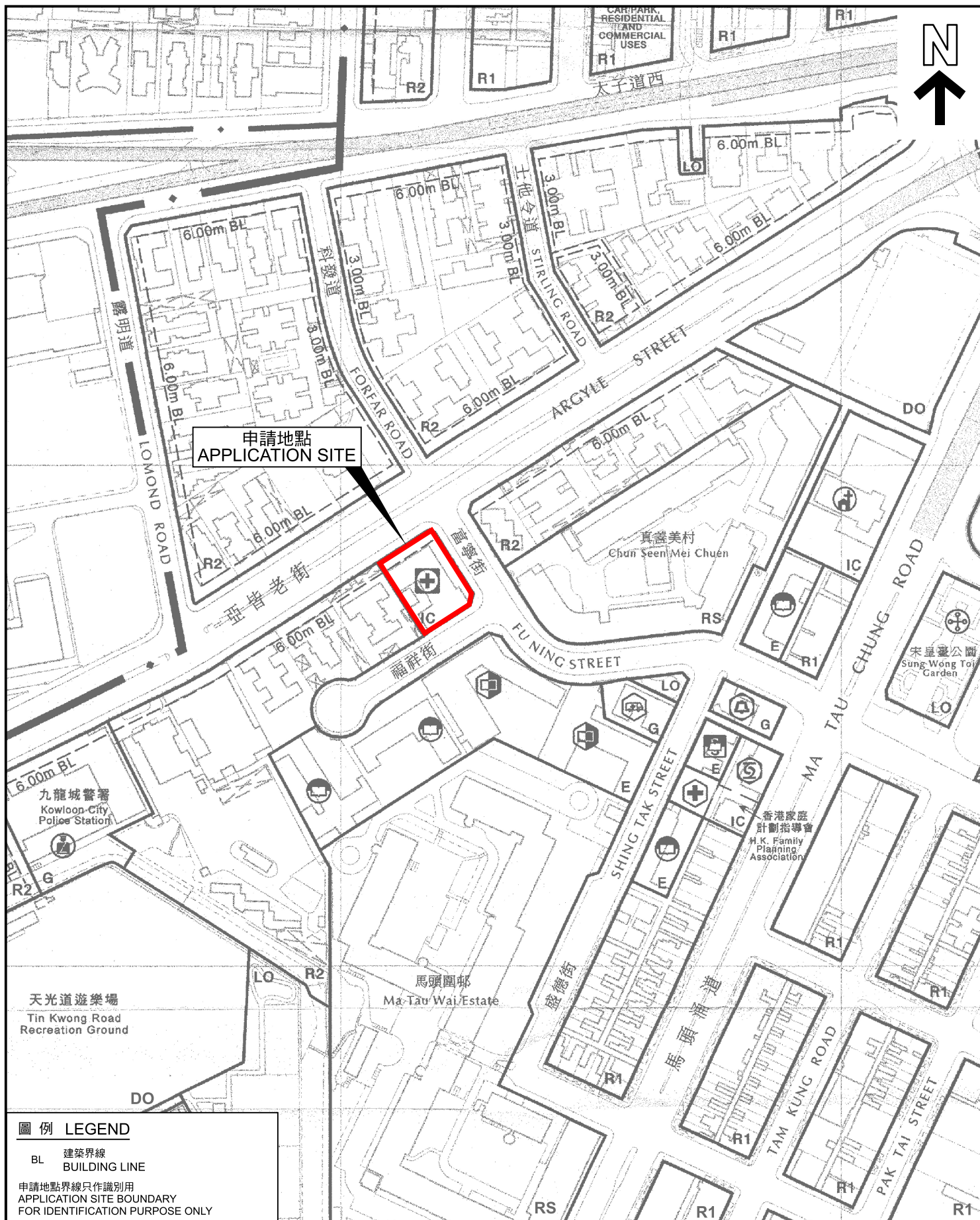
規劃署
PLANNING
DEPARTMENT



參考編號
REFERENCE No.
Y/K10/6

圖 PLAN
Z - 1

本摘要圖於2025年5月7日擬備，所根據的資料為
於2015年9月8日核准的分區計劃大綱圖編號S/K7/24，
於2023年9月5日核准的分區計劃大綱圖編號S/K10/30，
於2017年12月5日核准的分區計劃大綱圖編號S/K18/21和
於2022年10月18日核准的分區計劃大綱圖編號S/K22/8
EXTRACT PLAN PREPARED ON 7.5.2025
BASED ON OUTLINE ZONING PLANS No.
S/K7/24 APPROVED ON 8.9.2015,
S/K10/30 APPROVED ON 5.9.2023,
S/K18/21 APPROVED ON 5.12.2017 AND
S/K22/8 APPROVED ON 18.10.2022



圖例 LEGEND

BL 建築界線
BUILDING LINE

申請地點界線只作識別用
APPLICATION SITE BOUNDARY
FOR IDENTIFICATION PURPOSE ONLY

位置圖 LOCATION PLAN

修訂位於九龍城亞皆老街222號九龍內地段第8813號
一幅「政府、機構或社區」用地的建築物高度限制，
由5層改為主水平基準上114米

九龍九龍城亞皆老街222號九龍內地段第8813號

TO AMEND THE BUILDING HEIGHT RESTRICTION
ON A "GOVERNMENT, INSTITUTION OR COMMUNITY" SITE
AT KOWLOON INLAND LOT 8813, 222 ARGYLE STREET, KOWLOON CITY

FROM 5 STOREYS TO 114 METRES ABOVE PRINCIPAL DATUM
KOWLOON INLAND LOT 8813, 222 ARGYLE STREET, KOWLOON CITY, KOWLOON

SCALE 1:2 500 比例尺

米 50 0 50 100 米
METRES

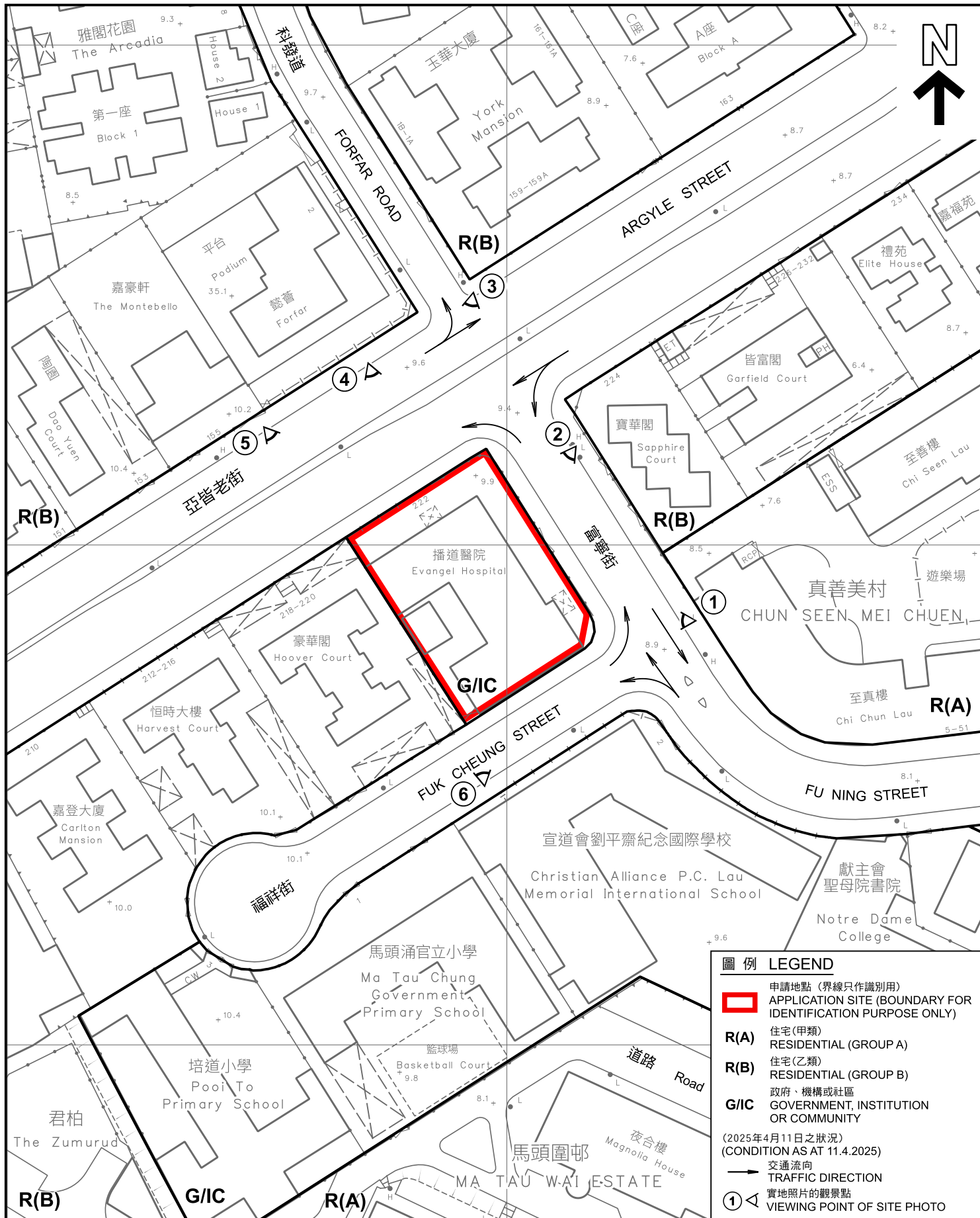
規劃署
PLANNING
DEPARTMENT



參考編號
REFERENCE No.
Y/K10/6

圖 PLAN
Z - 2

本摘要圖於2025年5月7日擬備，所根據的資料為
於2000年6月28日傳閱的
馬頭角及九龍城發展大綱草圖編號D/K10/1C
EXTRACT PLAN PREPARED ON 7.5.2025
BASED ON DRAFT MA TAU KOK & KOWLOON CITY
ODP No. D/K10/1C CIRCULATED ON 28.6.2000



平面圖 SITE PLAN

修訂位於九龍城亞皆老街222號九龍內地段第8813號
一幅「政府、機構或社區」用地的建築物高度限制，
由5層改為主水平基準上114米

九龍九龍城亞皆老街222號九龍內地段第8813號
TO AMEND THE BUILDING HEIGHT RESTRICTION
ON A "GOVERNMENT, INSTITUTION OR COMMUNITY" SITE
AT KOWLOON INLAND LOT 8813, 222 ARGYLE STREET, KOWLOON CITY
FROM 5 STOREYS TO 114 METRES ABOVE PRINCIPAL DATUM
KOWLOON INLAND LOT 8813, 222 ARGYLE STREET, KOWLOON CITY, KOWLOON

SCALE 1:1 000 比例尺

米 20 0 20 40 米
METRES

本摘要圖於2025年5月7日擬備，
所根據的資料為測量圖編號
11-NW-15D

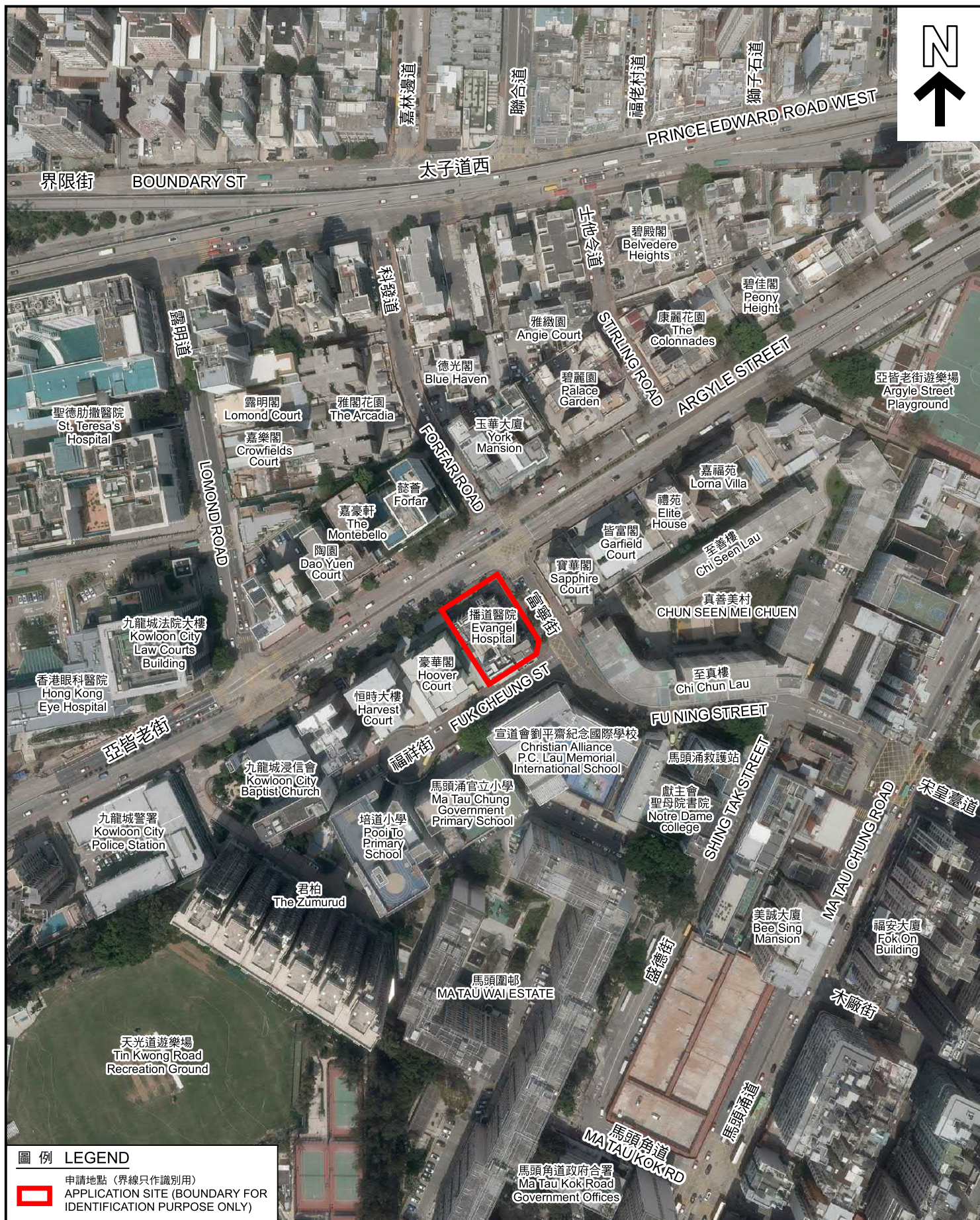
EXTRACT PLAN PREPARED ON 7.5.2025
BASED ON SURVEY SHEET No.
11-NW-15D

規劃署
PLANNING
DEPARTMENT



參考編號
REFERENCE No.
Y/K10/6

圖 PLAN
Z - 3



圖例 LEGEND



申請地點 (界線只作識別用)
APPLICATION SITE (BOUNDARY FOR
IDENTIFICATION PURPOSE ONLY)

本圖於2025年5月7日擬備，
所根據的資料為地政總署於
2024年3月20日拍得的航攝照片編號
E220415C

PLAN PREPARED ON 7.5.2025
BASED ON AERIAL PHOTO No.
E220415C TAKEN ON 20.3.2024
BY LANDS DEPARTMENT

航攝照片 AERIAL PHOTO

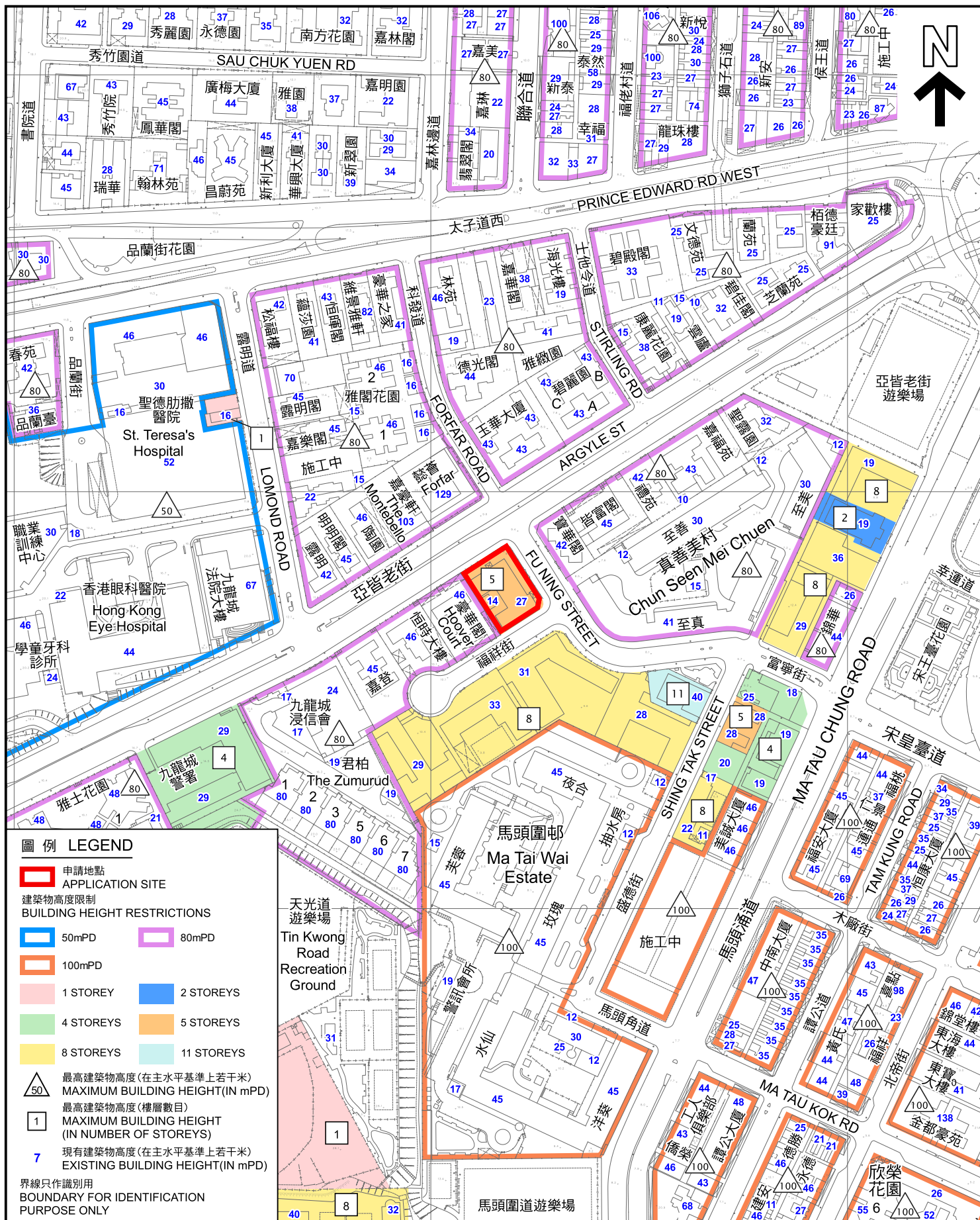
修訂位於九龍城亞皆老街222號九龍內地地段第8813號
一幅「政府、機構或社區」用地的建築物高度限制，
由5層改為主水平基準上114米
九龍九龍城亞皆老街222號九龍內地地段第8813號
TO AMEND THE BUILDING HEIGHT RESTRICTION
ON A "GOVERNMENT, INSTITUTION OR COMMUNITY" SITE
AT KOWLOON INLAND LOT 8813, 222 ARGYLE STREET, KOWLOON CITY
FROM 5 STOREYS TO 114 METRES ABOVE PRINCIPAL DATUM
KOWLOON INLAND LOT 8813, 222 ARGYLE STREET, KOWLOON CITY, KOWLOON

規劃署
PLANNING
DEPARTMENT



參考編號
REFERENCE No.
Y/K10/6

圖 PLAN
Z - 4



現有建築物高度 HEIGHT OF EXISTING BUILDINGS

修訂位於九龍城亞皆老街222號九龍內地段第8813號一幅「政府、機構或社區」用地的建築物高度限制，由5層改為主水平基準上114米
九龍九龍城亞皆老街222號九龍內地段第8813號
TO AMEND THE BUILDING HEIGHT RESTRICTION ON A "GOVERNMENT, INSTITUTION OR COMMUNITY" SITE AT KOWLOON INLAND LOT 8813, 222 ARGYLE STREET, KOWLOON CITY FROM 5 STOREYS TO 114 METRES ABOVE PRINCIPAL DATUM
KOWLOON INLAND LOT 8813, 222 ARGYLE STREET, KOWLOON CITY, KOWLOON

SCALE 1:3 000 比例尺

米 50 0 50 100 米
METRES

規劃署
PLANNING
DEPARTMENT



參考編號
REFERENCE No.
Y/K10/6

圖 PLAN
Z - 5

本摘要圖於2025年5月7日擬備，
所根據的資料為測量圖編號
11-NW-15D

EXTRACT PLAN PREPARED ON 7.5.2025
BASED ON SURVEY SHEET No.
11-NW-15D



界線只作識別用
BOUNDARY FOR IDENTIFICATION
PURPOSE ONLY

本圖於2025年5月7日擬備，
所根據的資料為攝於
2024年4月11日的實地照片
PLAN PREPARED ON 7.5.2025
BASED ON SITE PHOTOS
TAKEN ON 11.4.2025

實地照片 SITE PHOTOS

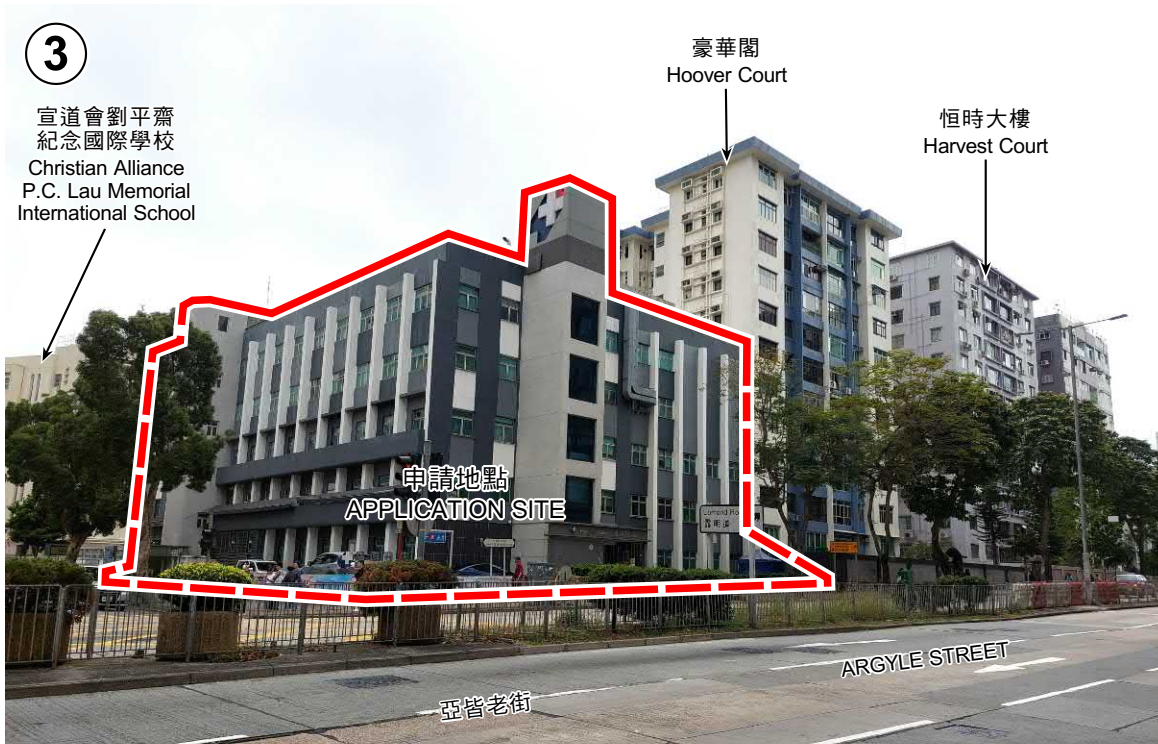
修訂位於九龍城亞皆老街222號九龍內地段第8813號
一幅「政府、機構或社區」用地的建築物高度限制，
由5層改為主水平基準上114米
九龍九龍城亞皆老街222號九龍內地段第8813號
TO AMEND THE BUILDING HEIGHT RESTRICTION
ON A "GOVERNMENT, INSTITUTION OR COMMUNITY" SITE
AT KOWLOON INLAND LOT 8813, 222 ARGYLE STREET, KOWLOON CITY
FROM 5 STOREYS TO 114 METRES ABOVE PRINCIPAL DATUM
KOWLOON INLAND LOT 8813, 222 ARGYLE STREET, KOWLOON CITY, KOWLOON

規劃署
PLANNING
DEPARTMENT



參考編號
REFERENCE No.
Y/K10/6

圖 PLAN
Z - 6a



界線只作識別用
BOUNDARY FOR IDENTIFICATION
PURPOSE ONLY

本圖於2025年5月7日擬備，
所根據的資料為攝於
2024年4月11日的實地照片
PLAN PREPARED ON 7.5.2025
BASED ON SITE PHOTOS
TAKEN ON 11.4.2025

實地照片 SITE PHOTOS

修訂位於九龍城亞皆老街222號九龍內地段第8813號
一幅「政府、機構或社區」用地的建築物高度限制，
由5層改為主水平基準上114米
九龍九龍城亞皆老街222號九龍內地段第8813號
TO AMEND THE BUILDING HEIGHT RESTRICTION
ON A "GOVERNMENT, INSTITUTION OR COMMUNITY" SITE
AT KOWLOON INLAND LOT 8813, 222 ARGYLE STREET, KOWLOON CITY
FROM 5 STOREYS TO 114 METRES ABOVE PRINCIPAL DATUM
KOWLOON INLAND LOT 8813, 222 ARGYLE STREET, KOWLOON CITY, KOWLOON

規劃署
PLANNING
DEPARTMENT



參考編號
REFERENCE No.
Y/K10/6

圖 PLAN
Z - 6b

5



6



界線只作識別用
BOUNDARY FOR IDENTIFICATION
PURPOSE ONLY

本圖於2025年5月7日擬備，
所根據的資料為攝於
2024年4月11日的實地照片
PLAN PREPARED ON 7.5.2025
BASED ON SITE PHOTOS
TAKEN ON 11.4.2025

實地照片 SITE PHOTOS

修訂位於九龍城亞皆老街222號九龍內地段第8813號
一幅「政府、機構或社區」用地的建築物高度限制，
由5層改為主水平基準上114米
九龍九龍城亞皆老街222號九龍內地段第8813號
TO AMEND THE BUILDING HEIGHT RESTRICTION
ON A "GOVERNMENT, INSTITUTION OR COMMUNITY" SITE
AT KOWLOON INLAND LOT 8813, 222 ARGYLE STREET, KOWLOON CITY
FROM 5 STOREYS TO 114 METRES ABOVE PRINCIPAL DATUM
KOWLOON INLAND LOT 8813, 222 ARGYLE STREET, KOWLOON CITY, KOWLOON

規劃署
PLANNING
DEPARTMENT



參考編號
REFERENCE No.
Y/K10/6

圖 PLAN
Z - 6c