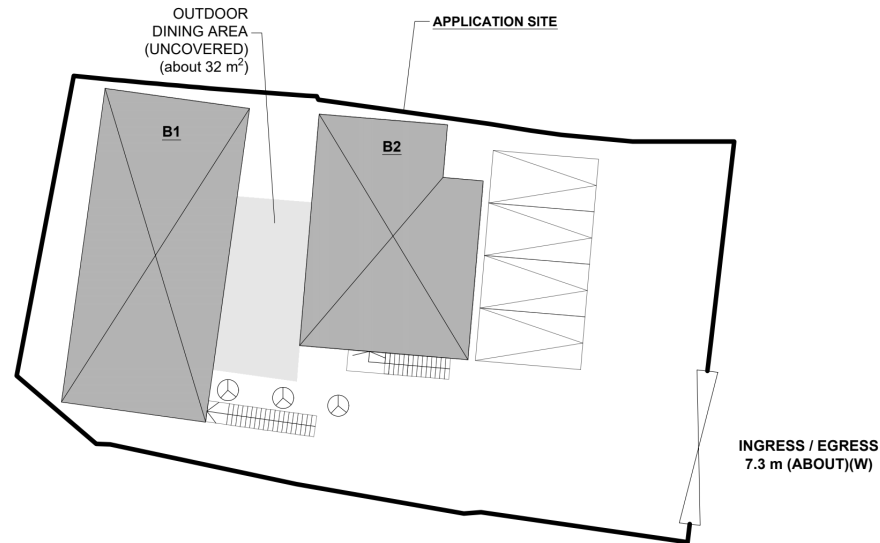
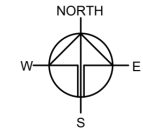


DEVELOPMENT PARAMETERS

APPLICATION SITE AREA	: 574 m ²	(ABOUT)
COVERED AREA	: 189.75 m ²	(ABOUT)
UNCOVERED AREA	: 384.25 m ²	(ABOUT)
PLOT RATIO	: 0.66	(ABOUT)
SITE COVERAGE	: 33 %	(ABOUT)
NO. OF STRUCTURE	: 2	
DOMESTIC GFA	: NOT APPLICABLE	
NON-DOMESTIC GFA	: 379.5 m ²	(ABOUT)
TOTAL GFA	: 379.5 m ²	(ABOUT)
BUILDING HEIGHT	: NOT EXCEEDING 7.5 m	
NO. OF STOREY	: 2	

STRUCTURE	USE	COVERED AREA	GFA	BUILDING HEIGHT
B1 (G/F) (1/F)	EATING PLACE, SITE OFFICE SHOP AND SERVICES	106.5 m ² (ABOUT)	213 m ² (ABOUT)	NOT EXCEEDING 7.5 m (2-STOREY)
B2 (G/F) (1/F)	SHOP AND SERVICES, SITE OFFICE, WASHROOM SHOP AND SERVICES	83.25 m ² (ABOUT)	166.5 m ² (ABOUT)	NOT EXCEEDING 7.5 m (2-STOREY)
TOTAL		189.75 m² (ABOUT)	379.5 m² (ABOUT)	



LEGEND

	APPLICATION SITE
	STRUCTURE
	PARKING SPACE
	EXISTING TREE (WILL BE PRESERVED)
	INGRESS / EGRESS

PARKING AND LOADING/UNLOADING PROVISION

NO. OF PRIVATE CAR PARKING SPACE	: 4
DIMENSION OF PARKING SPACE	: 5 m (L) X 2.5 m (W)

PLANNING CONSULTANT



PROJECT

TEMPORARY SHOP AND
SERVICES AND EATING PLACE
WITH ANCILLARY FACILITIES
FOR A PERIOD OF 5 YEARS

SITE LOCATION

LOT 2905 S.C RP (PART) IN D.D.
104 AND ADJOINING
GOVERNMENT LAND, MAI PO,
YUEN LONG, NEW TERRITORIES

SCALE

1:300 @ A1

DRAWN BY

MN

DATE

20.11.2024

CHECKED BY

DATE

APPROVED BY

DATE

DWG. TITLE

LAYOUT PLAN

DWG NO.

PLAN 4

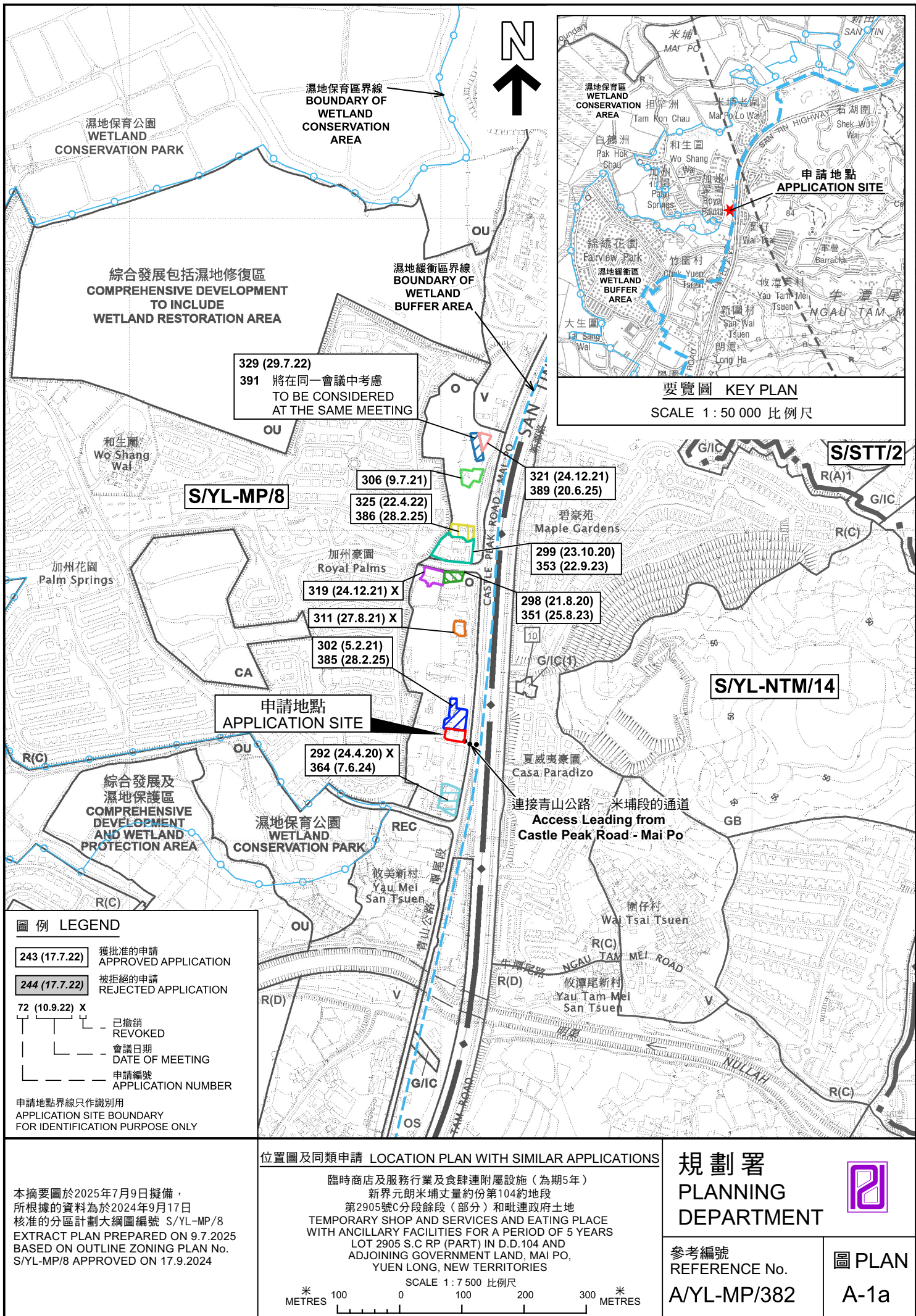
VER.

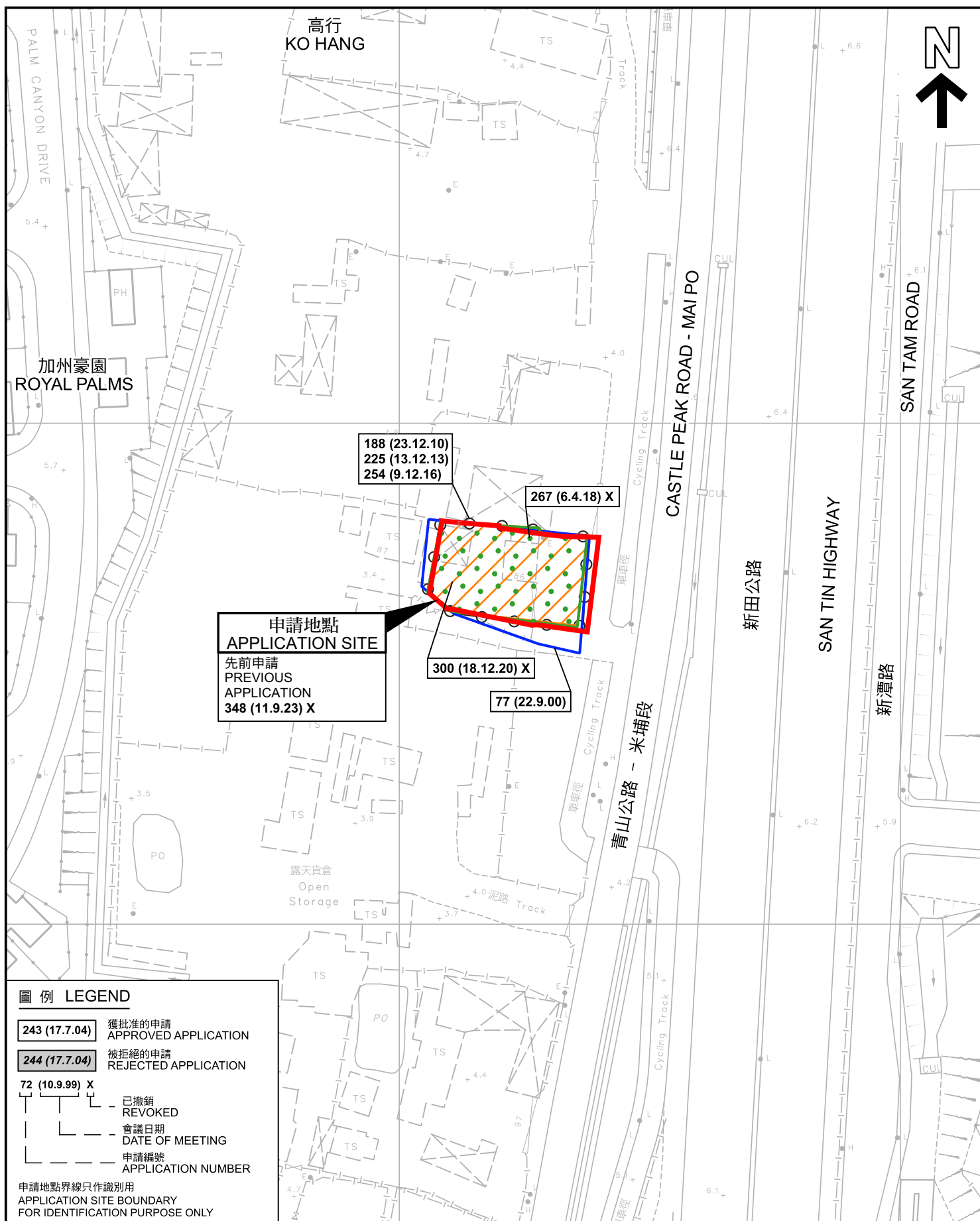
001

(摘錄自申請人於20.11.2024呈交的補充規劃書)
(Extract from Applicant's Supplementary
Planning Statement of 20.11.2024)

參考編號
REFERENCE No.
A/YL-MP/382

繪圖
DRAWING
A - 1





先前申請圖 PREVIOUS APPLICATION PLAN

臨時商店及服務行業及食肆連附屬設施（為期5年）
新界元朗米埔丈量約份第104約地段
第2905號C分段餘地（部分）和毗連政府土地
TEMPORARY SHOP AND SERVICES AND EATING PLACE
WITH ANCILLARY FACILITIES FOR A PERIOD OF 5 YEARS
LOT 2905 S.C RP (PART) IN D.D.104 AND
ADJOINING GOVERNMENT LAND, MAI PO,
YUEN LONG, NEW TERRITORIES

SCALE 1 : 1 000 比例尺

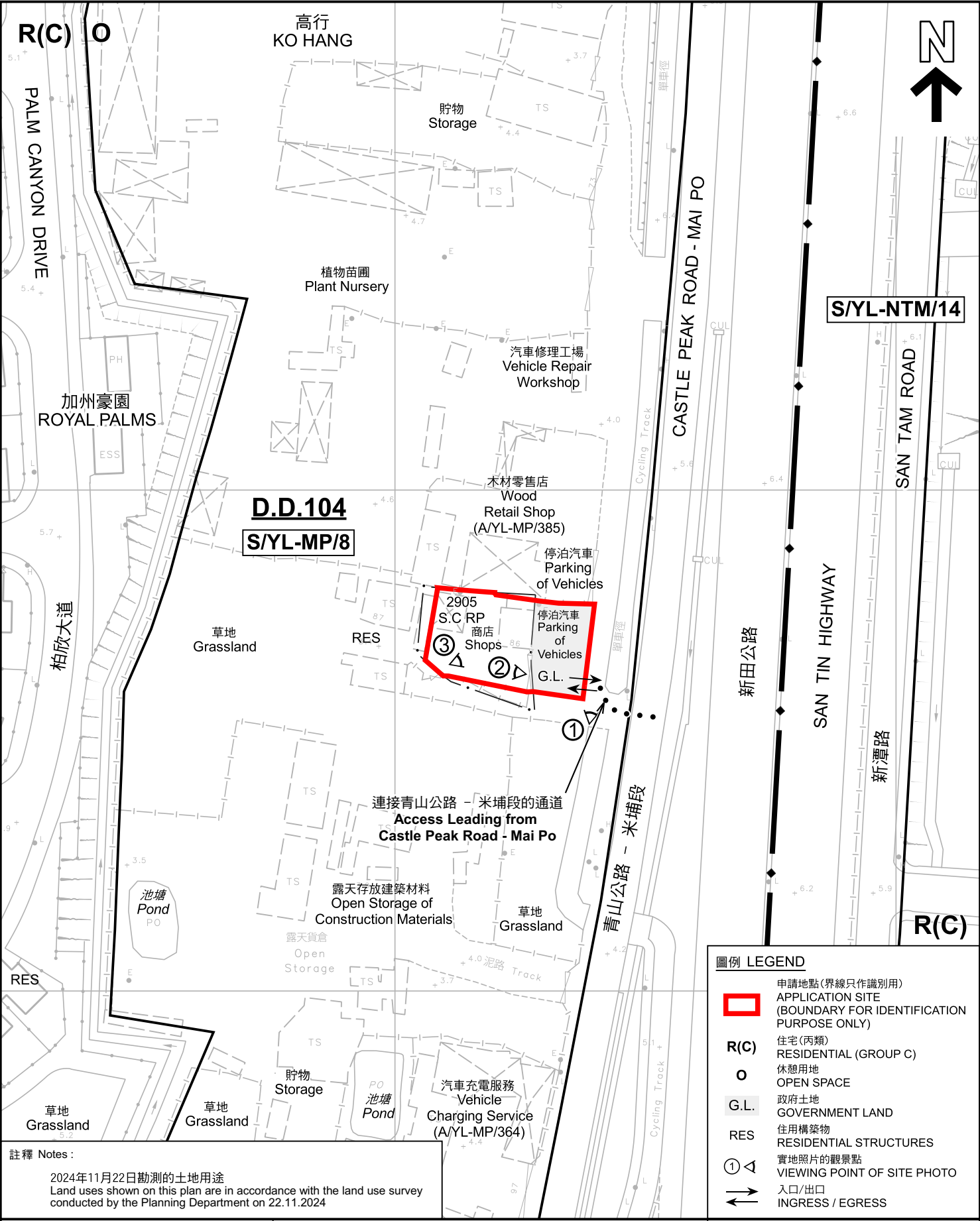
規劃署
PLANNING
DEPARTMENT



參考編號
REFERENCE No.
A/YL-MP/382

PLAN
A-1b

本摘要圖於2024年12月13日擬備，
所根據的資料為測量圖編號
2-SE-16B 及 17A
EXTRACT PLAN PREPARED ON 13.12.2024
BASED ON SURVEY SHEETS No.
2-SE-16B & 17A



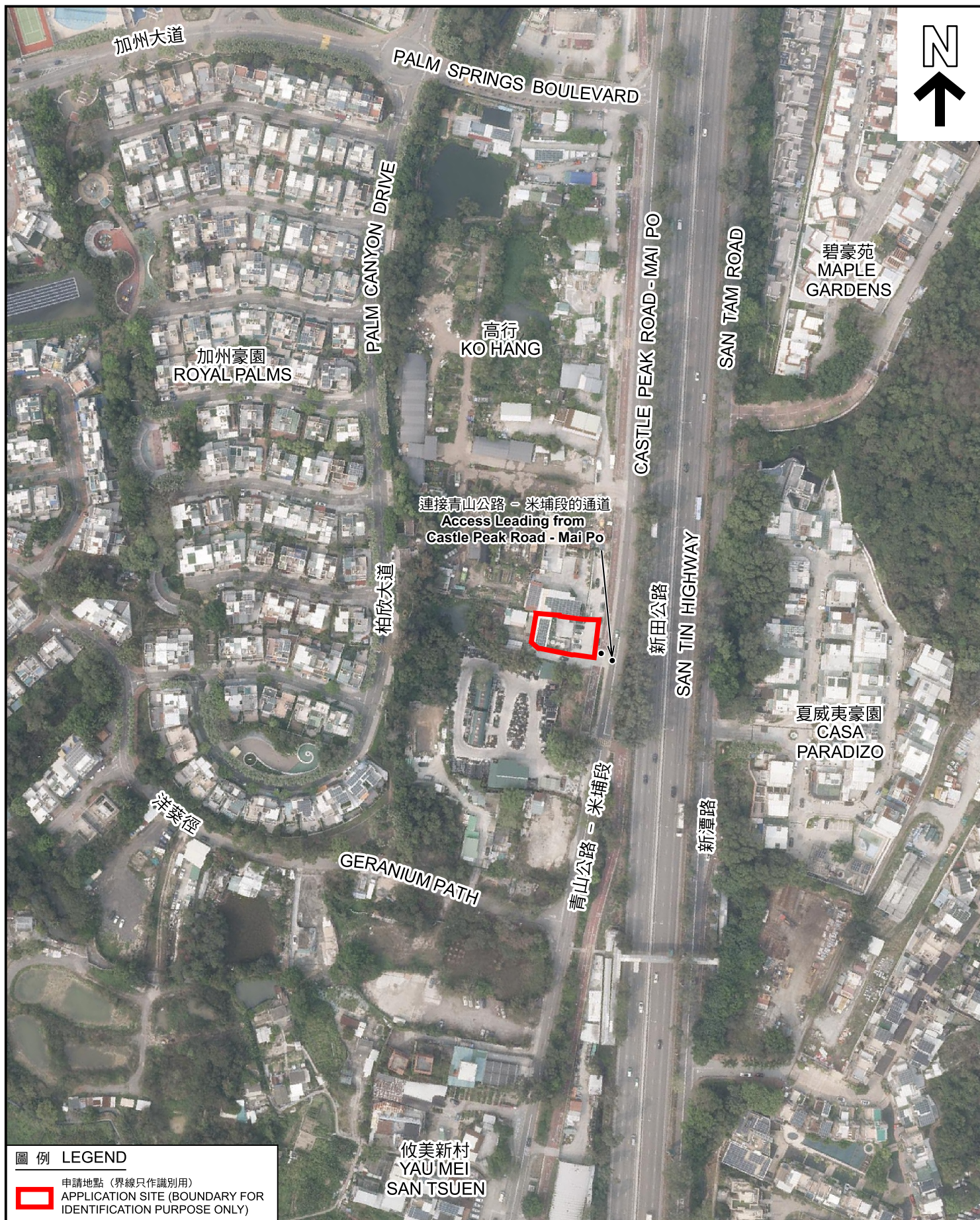
註釋 Notes:

2024年11月22日勘測的土地用途
Land uses shown on this plan are in accordance with the land use survey conducted by the Planning Department on 22.11.2024

圖例 LEGEND

- 申請地點(界線只作識別用)
APPLICATION SITE (BOUNDARY FOR IDENTIFICATION PURPOSE ONLY)
- R(C)** 住宅(丙類)
RESIDENTIAL (GROUP C)
- 休憩用地
OPEN SPACE
- G.L.** 政府土地
GOVERNMENT LAND
- RES** 住用構築物
RESIDENTIAL STRUCTURES
- 實地照片的觀景點
VIEWING POINT OF SITE PHOTO
- 入口/出口
INGRESS / EGRESS

<p>本摘要圖於2025年7月11日擬備， 所根據的資料為測量圖編號 2-SE-16B 及 17A EXTRACT PLAN PREPARED ON 11.7.2025 BASED ON SURVEY SHEETS No. 2-SE-16B & 17A</p>	<p>平面圖 SITE PLAN</p> <p>臨時商店及服務行業及食肆連附屬設施(為期5年) 新界元朗米埔丈量約份第104約地段 第2905號C分段餘段(部分)和毗連政府土地 TEMPORARY SHOP AND SERVICES AND EATING PLACE WITH ANCILLARY FACILITIES FOR A PERIOD OF 5 YEARS LOT 2905 S.C RP (PART) IN D.D.104 AND ADJOINING GOVERNMENT LAND, MAI PO, YUEN LONG, NEW TERRITORIES SCALE 1:1 000 比例尺</p> <p>米 20 0 20 40 米 METRES</p>	<p>規劃署 PLANNING DEPARTMENT</p>
	<p>參考編號 REFERENCE No. A/YL-MP/382</p>	<p>圖 PLAN A-2</p>



圖例 LEGEND



申請地點 (界線只作識別用)
APPLICATION SITE (BOUNDARY FOR
IDENTIFICATION PURPOSE ONLY)

航攝照片 AERIAL PHOTO

本摘要圖於2024年12月16日擬備，
所根據的資料為地政總署於2024年3月17日
拍得的航攝照片編號 E219312C
EXTRACT PLAN PREPARED ON 16.12.2024
BASED ON AERIAL PHOTO No.
E219312C TAKEN ON 17.3.2024
BY LANDS DEPARTMENT

臨時商店及服務行業及食肆連附屬設施 (為期5年)
新界元朗米埔丈量約份第104約地段
第2905號C分段餘段 (部分) 和毗連政府土地
TEMPORARY SHOP AND SERVICES AND EATING PLACE
WITH ANCILLARY FACILITIES FOR A PERIOD OF 5 YEARS
LOT 2905 S.C RP (PART) IN D.D.104 AND
ADJOINING GOVERNMENT LAND, MAI PO,
YUEN LONG, NEW TERRITORIES

規劃署
PLANNING
DEPARTMENT



參考編號
REFERENCE No.
A/YL-MP/382

圖 PLAN
A-3



申請地點界線只作識別用 APPLICATION SITE BOUNDARY FOR IDENTIFICATION PURPOSE ONLY

實地照片 SITE PHOTOS

本圖於2025年7月11日擬備，所根據的資料為攝於2025年7月10日的實地照片
PLAN PREPARED ON 11.7.2025
BASED ON SITE PHOTOS
TAKEN ON 10.7.2025

臨時商店及服務行業及食肆連附屬設施（為期5年）
新界元朗米埔丈量約份第104約地段
第2905號C分段餘段（部分）和毗連政府土地
TEMPORARY SHOP AND SERVICES AND EATING PLACE
WITH ANCILLARY FACILITIES FOR A PERIOD OF 5 YEARS
LOT 2905 S.C RP (PART) IN D.D.104 AND
ADJOINING GOVERNMENT LAND, MAI PO,
YUEN LONG, NEW TERRITORIES

規劃署
PLANNING
DEPARTMENT



參考編號
REFERENCE No.
A/YL-MP/382

圖 PLAN
A-4