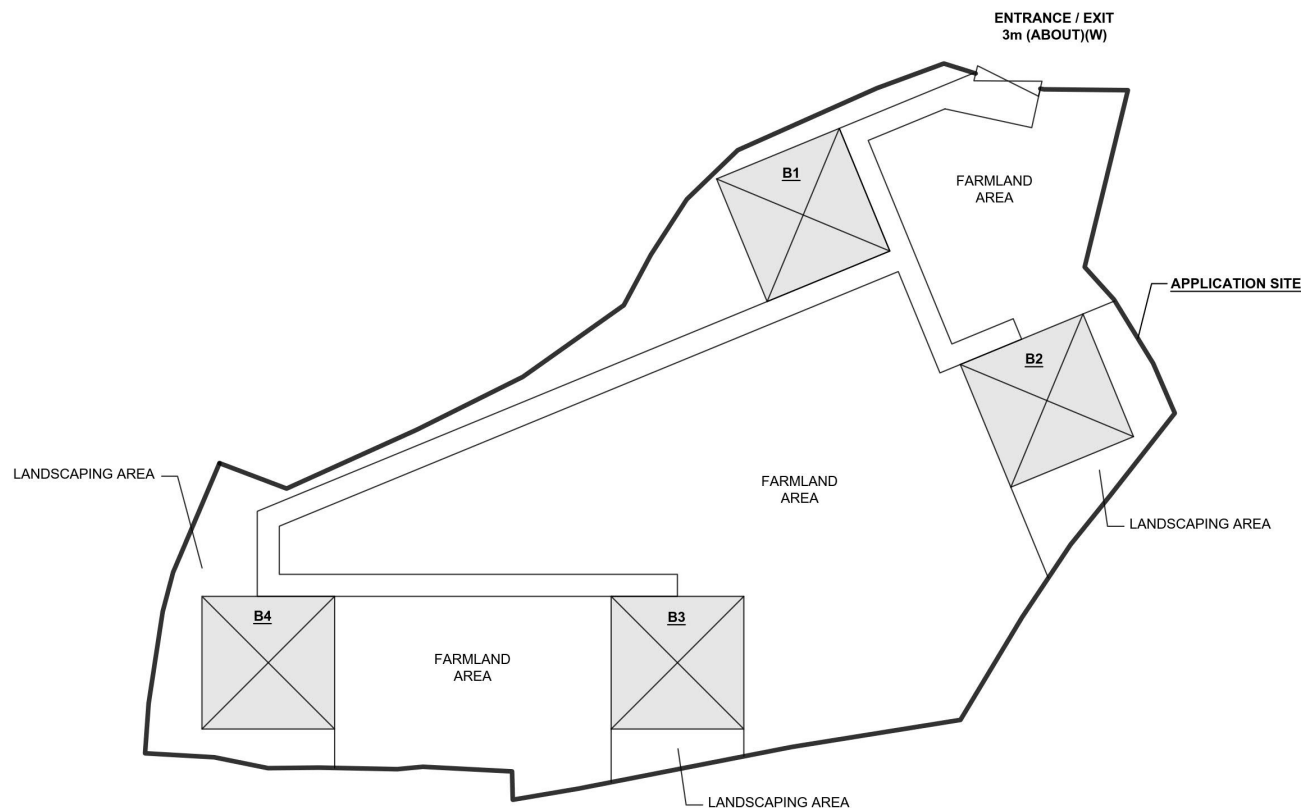
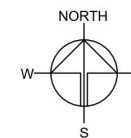


# DEVELOPMENT PARAMETERS

APPLICATION SITE AREA	: 912m <sup>2</sup>	(ABOUT)
COVERED AREA	: 144m <sup>2</sup>	(ABOUT)
UNCOVERED AREA	: 768m <sup>2</sup>	(ABOUT)
PLOT RATIO	: 0.3	(ABOUT)
SITE COVERAGE	: 16%	(ABOUT)
NO. OF STRUCTURE	: 4	
DOMESTIC GFA	: NOT APPLICABLE	
NON-DOMESTIC GFA	: 288 m <sup>2</sup>	(ABOUT)
TOTAL GFA	: 288 m <sup>2</sup>	(ABOUT)
BUILDING HEIGHT	: 7 m	(ABOUT)
NO. OF STOREY	: 2	

STRUCTURE	USE	COVERED AREA	GROSS FLOOR AREA	BUILDING HEIGHT
B1	RECEPTION AND SITE OFFICE	36m <sup>2</sup> (ABOUT)	72m <sup>2</sup> (ABOUT)	7m (ABOUT) (2-STOREY)
B2	TOILET AND CHANGING ROOM	36m <sup>2</sup> (ABOUT)	72m <sup>2</sup> (ABOUT)	7m (ABOUT) (2-STOREY)
B3	STORAGE OF FARM TOOLS	36m <sup>2</sup> (ABOUT)	72m <sup>2</sup> (ABOUT)	7m (ABOUT) (2-STOREY)
B4	PLANT NURSERY & STORAGE OF FARM TOOLS	36m <sup>2</sup> (ABOUT)	72m <sup>2</sup> (ABOUT)	7m (ABOUT) (2-STOREY)
TOTAL		144m <sup>2</sup> (ABOUT)	288m <sup>2</sup> (ABOUT)	



NO PARKING NOR LOADING/UNLOADING SPACE IS PROVIDED AT THE APPLICATION SITE.

## LEGEND

	APPLICATION SITE
	STRUCTURE
	ENTRANCE / EXIT

PLANNING CONSULTANT



PROJECT

PROPOSED TEMPORARY PLACE OF RECREATION, SPORTS OR CULTURE (HOBBY FARM) WITH ANCILLARY FACILITIES AND ASSOCIATED FILLING OF LAND FOR A PERIOD OF 5 YEARS

SITE LOCATION

VARIOUS LOTS IN D.D. 107, FUNG KAT HEUNG, KAM TIN, YUEN LONG, NEW TERRITORIES

SCALE

1:300 @ A4

DRAWN BY	DATE
MN	5.3.2025
REVISED BY	DATE
APPROVED BY	DATE
DWG. TITLE	
LAYOUT PLAN	
DWG. NO.	VER.
PLAN 4	001

(摘錄自申請人於 9.4.2025 呈交的申請書)  
(Extract from Applicant's Submission of 9.4.2025)

參考編號  
REFERENCE No.  
A/YL-KTN/1107

繪圖  
DRAWING  
A - 1

# PAVED RATIO OF THE APPLICATION SITE

APPLICATION SITE AREA	: 912m <sup>2</sup>	(ABOUT)
FARMLAND AREA	: 551m <sup>2</sup> (60%)	(ABOUT)
LANDSCAPING AREA	: 139m <sup>2</sup>	(ABOUT)
FILLING OF LAND AREA	: 222m <sup>2</sup>	(ABOUT)
DEPTH OF LAND FILLING	: NOT MORE THAN 0.2m	
MATERIAL OF LAND FILLING	: CONCRETE	
PURPOSE OF LAND FILLING	: SITE FORMATION OF STRUCTURES, CIRCULATION SPACE	

## FILLING OF LAND AREA

ORIGINAL SITE LEVEL	: +6.5mPD (ABOUT)
PURPOSE	: CIRCULATION & PARKING SPACES
EXISTING SITE LEVEL	: +6.6mPD (ABOUT)
DEPTH OF LAND FILLING	: NOT MORE THAN 0.1m

## LANDSCAPING AREA

EXISTING SITE LEVEL	: +6.5mPD (ABOUT)
NO LAND FILLING IS REQUIRED	

## FARMLAND AREA

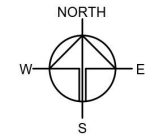
EXISTING SITE LEVEL	: +6.5mPD (ABOUT)
NO LAND FILLING IS REQUIRED	

## FILLING OF LAND AREA

ORIGINAL SITE LEVEL	: +6.5mPD (ABOUT)
PURPOSE	: SITE FORMATION OF STRUCTURE
EXISTING SITE LEVEL	: +6.7mPD (ABOUT)
DEPTH OF LAND FILLING	: NOT MORE THAN 0.2m

## LEGEND

 APPLICATION SITE



## PLANNING CONSULTANT



## PROJECT

PROPOSED TEMPORARY PLACE OF RECREATION, SPORTS OR CULTURE (HOBBY FARM) WITH ANCILLARY FACILITIES AND ASSOCIATED FILLING OF LAND FOR A PERIOD OF 5 YEARS

## SITE LOCATION

VARIOUS LOTS IN D.D. 107, FUNG KAT HEUNG, KAM TIN, YUEN LONG, NEW TERRITORIES

## SCALE

1:400 @ A4

DRAWN BY	DATE
MN	28.5.2025
REVISED BY	DATE
APPROVED BY	DATE

DWG. TITLE  
FILLING OF LAND

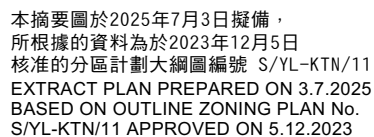
DWG NO.	VER.
PLAN 5	001

NO PARKING NOR LOADING/UNLOADING SPACE IS PROVIDED AT THE APPLICATION SITE.

(摘錄自申請人於 28. 5. 2025 呈交的進一步資料)  
(Extract from Applicant's Further  
Information Submitted on 28.5.2025)

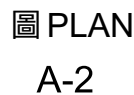
參考編號  
REFERENCE No.  
A/YL-KTN/1107

繪圖  
DRAWING  
A - 2

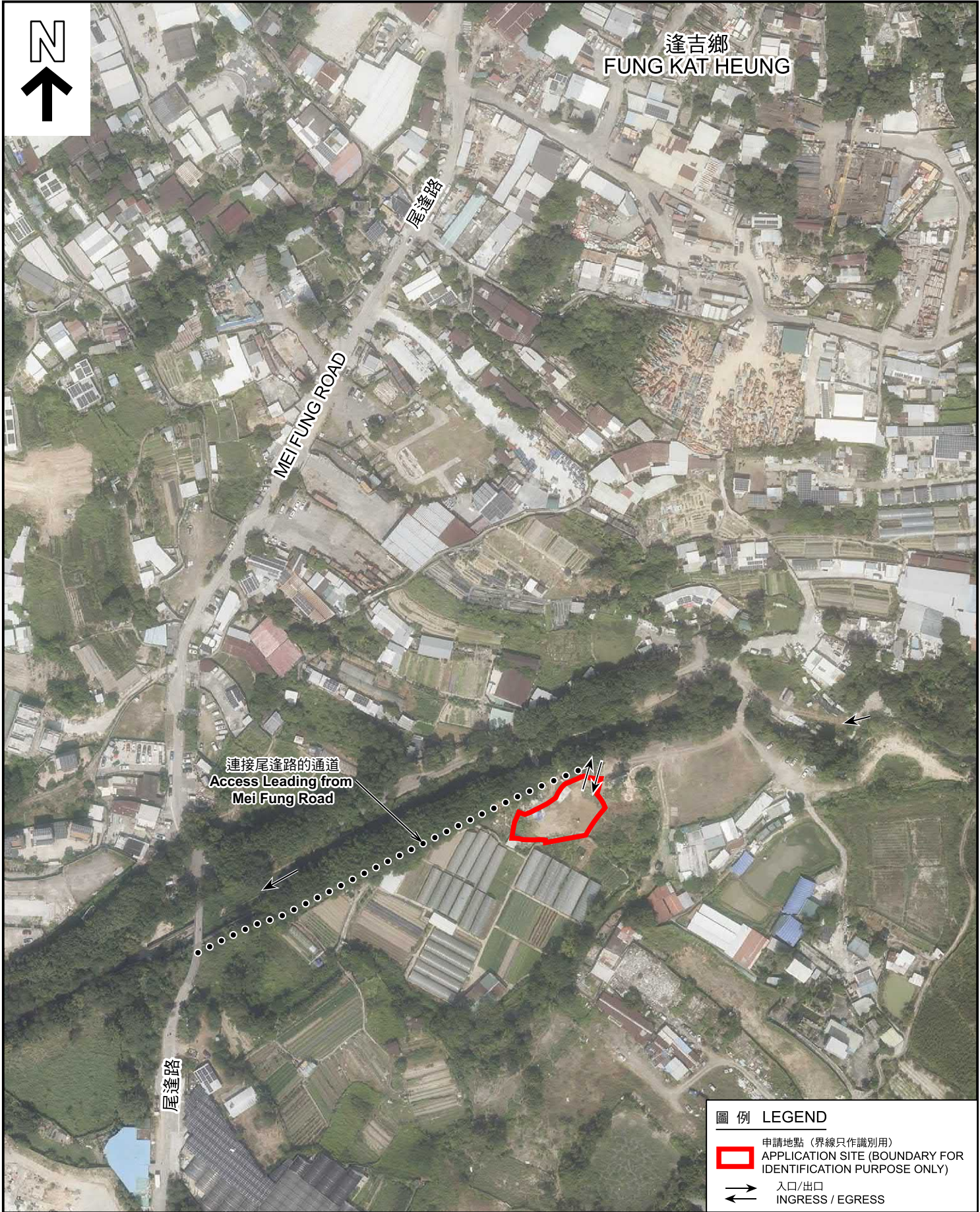




N  
↑







<p>本摘要圖於2025年7月3日擬備， 所根據的資料為地政總署於2024年10月24日 拍得的航攝照片編號E237011C EXTRACT PLAN PREPARED ON 3.7.2025 BASED ON AERIAL PHOTO No. E237011C TAKEN ON 24.10.2024 BY LANDS DEPARTMENT</p>	<p><u>航攝照片 AERIAL PHOTO</u></p> <p>擬議臨時康樂文娛場所(休閒農場)連附屬設施和相關的填土工程(為期5年) 新界元朗錦田逢吉鄉丈量約份第107約 地段第1058號餘段、第1059號餘段、第1060號及第1061號 PROPOSED TEMPORARY PLACE OF RECREATION, SPORTS OR CULTURE (HOBBY FARM) WITH ANCILLARY FACILITIES AND ASSOCIATED FILLING OF LAND FOR A PERIOD OF 5 YEARS LOTS 1058 RP, 1059 RP, 1060 AND 1061 IN D.D. 107, FUNG KAT HEUNG, KAM TIN, YUEN LONG, NEW TERRITORIES</p>	<p>規 劃 署 PLANNING DEPARTMENT</p> 
	<p>參考編號 REFERENCE No. A/YL-KTN/1107</p>	<p>圖 PLAN A-3</p>



1



2



3



申請地點界線只作識別用 APPLICATION SITE BOUNDARY FOR IDENTIFICATION PURPOSE ONLY

### 實地照片 SITE PHOTOS

本圖於2025年7月3日擬備，所根據的資料為攝於2025年5月6日的實地照片  
PLAN PREPARED ON 3.7.2025  
BASED ON SITE PHOTOS  
TAKEN ON 6.5.2025

擬議臨時康樂文娛場所(休閒農場)連附屬設施和相關的填土工程(為期5年)  
新界元朗錦田達吉鄉丈量約份第107約  
地段第1058號餘段、第1059號餘段、第1060號及第1061號  
PROPOSED TEMPORARY PLACE OF RECREATION, SPORTS OR  
CULTURE (HOBBY FARM) WITH ANCILLARY FACILITIES AND  
ASSOCIATED FILLING OF LAND FOR A PERIOD OF 5 YEARS  
LOTS 1058 RP, 1059 RP, 1060 AND 1061 IN D.D. 107, FUNG KAT HEUNG,  
KAM TIN, YUEN LONG, NEW TERRITORIES

規劃署  
PLANNING  
DEPARTMENT



參考編號  
REFERENCE No.  
A/YL-KTN/1107

圖 PLAN  
A-4