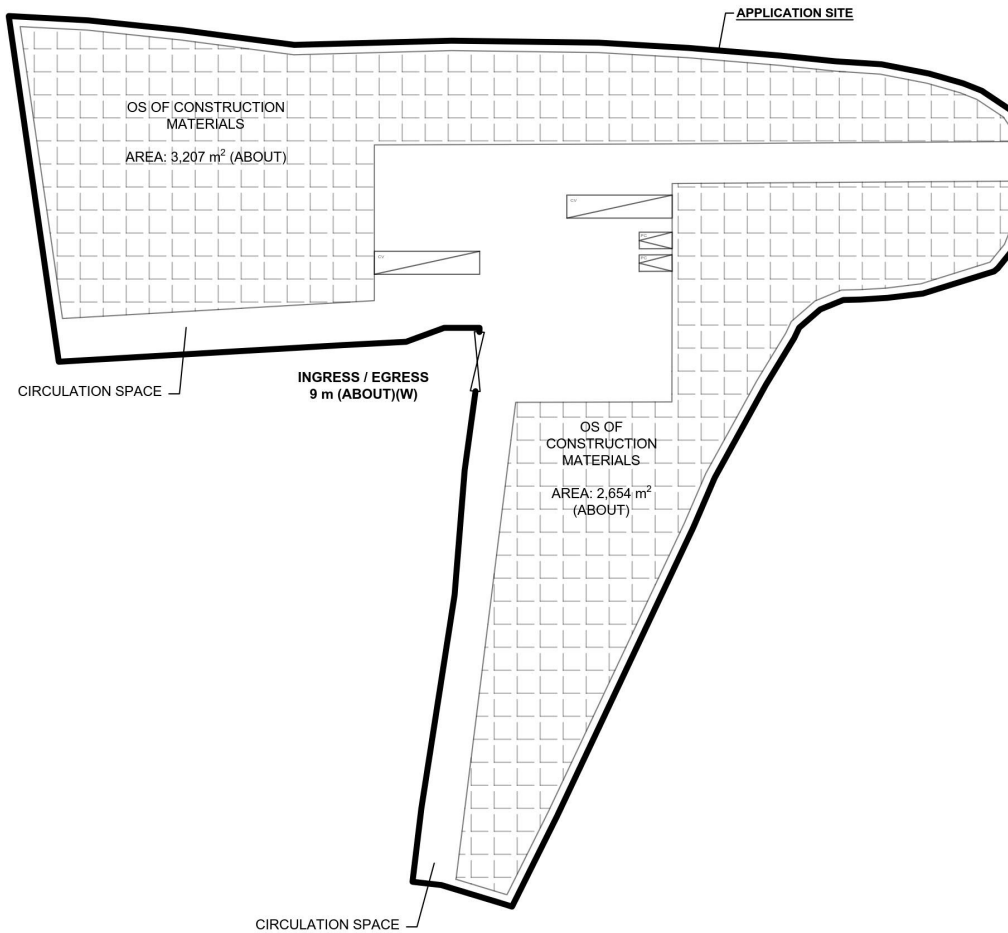


DEVELOPMENT PARAMETERS

APPLICATION SITE AREA : 9,091 m² (ABOUT)
COVERED AREA : NOT APPLICABLE
UNCOVERED AREA : 9,091 m² (ABOUT)

AREA OF OPEN STORAGE : 5,861 m² (ABOUT)
OS STACKING HEIGHT : NOT MORE THAN 2.5 m

NO STRUCTURE IS PROPOSED AT THE APPLICATION SITE.






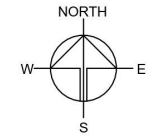
PARKING AND LOADING / UNLOADING PROVISIONS

NO. OF PRIVATE CAR PARKING SPACE : 2
DIMENSIONS OF PARKING SPACE : 5 m (L) x 2.5 m (W)

NO. OF L/U/L SPACE FOR CONTAINER VEHICLE : 2
3DIMENSION OF L/U/L SPACE : 16 m (L) X 3.5 m (W)

LEGEND

-  APPLICATION SITE
-  OPEN STORAGE AREA
-  INGRESS / EGRESS
-  PARKING SPACE (PC)
-  L/U/L SPACE (CV)



PLANNING CONSULTANT



PROJECT

PROPOSED TEMPORARY OPEN STORAGE OF CONSTRUCTION MATERIALS WITH ANCILLARY FACILITIES FOR A PERIOD OF 3 YEARS

SITE LOCATION

VARIOUS LOTS IN D.D. 107 AND ADJOINING GOVERNMENT LAND, FUNG KAT HEUNG, KAM TIN, YUEN LONG, NEW TERRITORIES

SCALE

1:1000 @ A4

DRAWN BY MN DATE 9.4.2025

CHECKED BY DATE

APPROVED BY DATE

DWG. TITLE LAYOUT PLAN

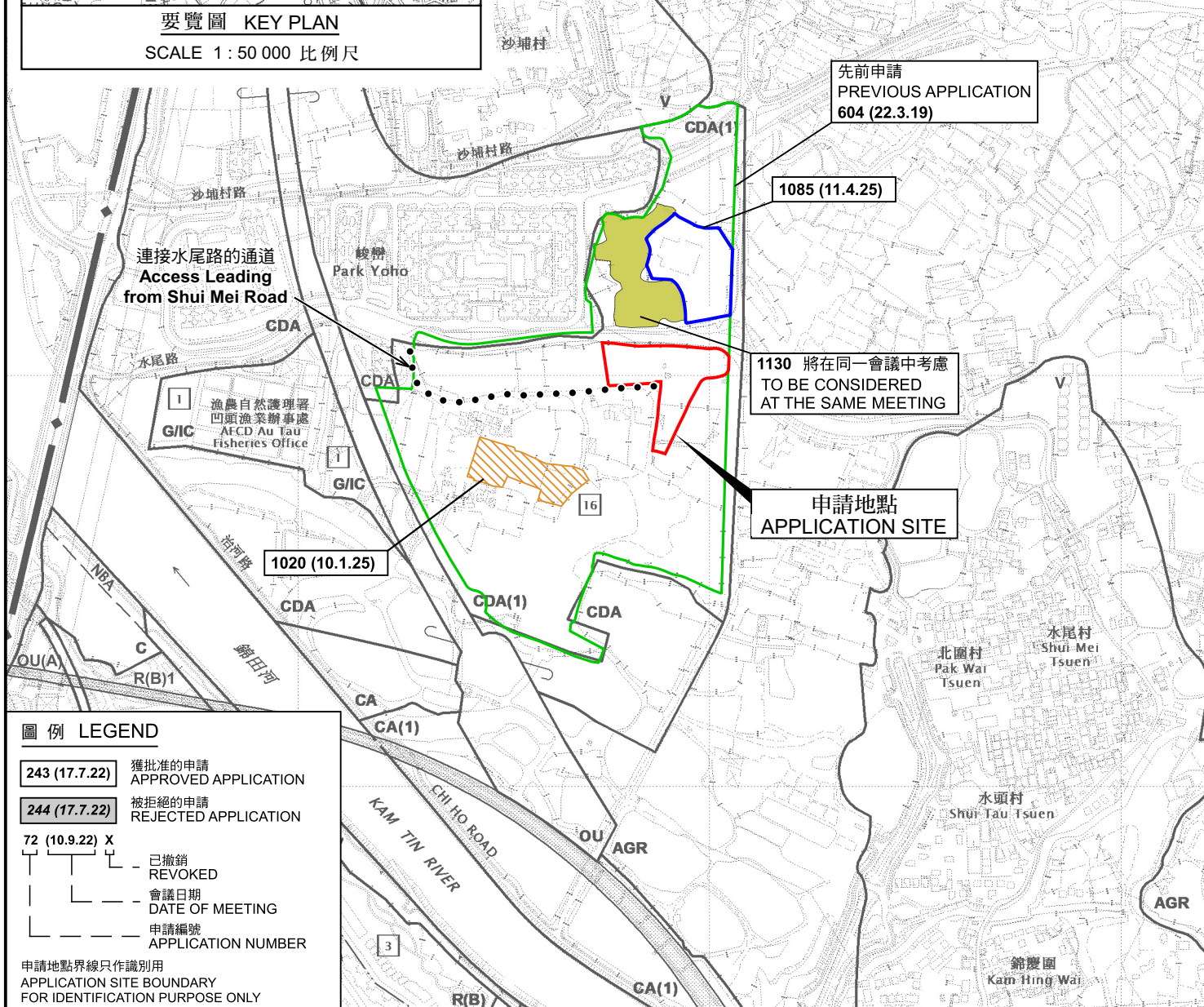
DWG NO. PLAN 5

VER. 001

(摘錄自申請人於 3. 6. 2025 呈交的申請書)
(Extract from Applicant's Submission of 3.6.2025)

參考編號
REFERENCE No.
A/YL-KTN/1125

繪圖
DRAWING
A - 1





圖例 LEGEND

- 申請地點 (界線只作識別用)
APPLICATION SITE (BOUNDARY FOR IDENTIFICATION PURPOSE ONLY)
- 入口/出口
INGRESS / EGRESS

航攝照片 AERIAL PHOTO

本摘要圖於2025年6月27日擬備，
所根據的資料為地政總署於2024年10月24日
拍得的航攝照片編號E236711C
EXTRACT PLAN PREPARED ON 27.6.2025
BASED ON AERIAL PHOTO NO.
E236711C TAKEN ON
24.10.2024 BY LANDS DEPARTMENT

臨時露天存放建築材料連附屬設施(為期3年)
新界元朗錦田達吉鄉丈量約份第107約
地段第1749號餘段及第1905號餘段(部分)和毗連政府土地
TEMPORARY OPEN STORAGE OF CONSTRUCTION MATERIALS
WITH ANCILLARY FACILITIES FOR A PERIOD OF 3 YEARS
LOTS 1749 RP AND 1905 RP (PART) IN D.D.107 AND
ADJOINING GOVERNMENT LAND, FUNG KAT HEUNG,
KAM TIN, YUEN LONG, NEW TERRITORIES

規劃署
PLANNING
DEPARTMENT



參考編號
REFERENCE No.
A/YL-KTN/1125

圖 PLAN
A-3

1



2



申請地點界線只作識別用 APPLICATION SITE BOUNDARY FOR IDENTIFICATION PURPOSE ONLY

實地照片 SITE PHOTOS

本圖於2025年6月27日擬備，所根據的資料為攝於2025年6月10日的實地照片
PLAN PREPARED ON 27.6.2025
BASED ON SITE PHOTOS
TAKEN ON 10.6.2025

臨時露天存放建築材料連附屬設施(為期3年)
新界元朗錦田達吉鄉丈量約份第107約
地段第1749號餘段及第1905號餘段(部分)和毗連政府土地
TEMPORARY OPEN STORAGE OF CONSTRUCTION MATERIALS
WITH ANCILLARY FACILITIES FOR A PERIOD OF 3 YEARS
LOTS 1749 RP AND 1905 RP (PART) IN D.D.107 AND
ADJOINING GOVERNMENT LAND, FUNG KAT HEUNG,
KAM TIN, YUEN LONG, NEW TERRITORIES

規劃署
PLANNING
DEPARTMENT



參考編號
REFERENCE No.
A/YL-KTN/1125

圖 PLAN
A-4