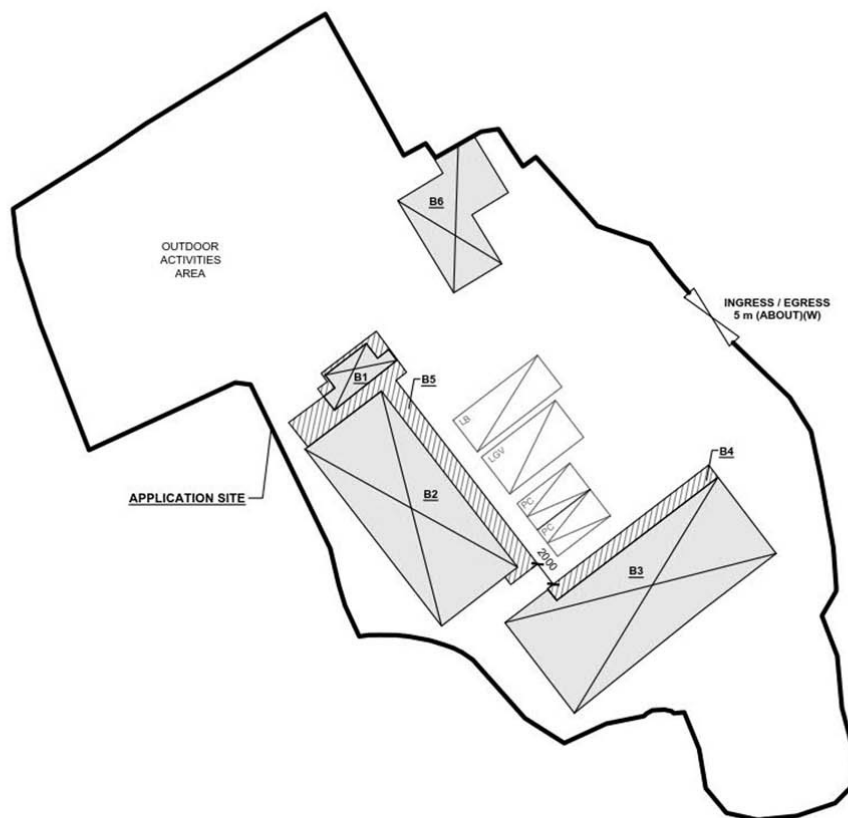


DEVELOPMENT PARAMETERS

APPLICATION SITE AREA	: 1,940 m ²	(ABOUT)
COVERED AREA	: 389 m ²	(ABOUT)
UNCOVERED AREA	: 1,551 m ²	(ABOUT)
PLOT RATIO	: 0.2	(ABOUT)
SITE COVERAGE	: 20 %	(ABOUT)
NO. OF STRUCTURE	: 6	
DOMESTIC GFA	: NOT APPLICABLE	
NON-DOMESTIC GFA	: 389 m ²	(ABOUT)
TOTAL GFA	: 389 m ²	(ABOUT)
BUILDING HEIGHT	: 3 m - 6 m	(ABOUT)
NO. OF STOREY	: 1	

STRUCTURE	USE	COVERED AREA	GROSS FLOOR AREA	BUILDING HEIGHT
B1	WASHROOM AND STORE ROOM	12m ² (ABOUT)	12 m ² (ABOUT)	3 m (ABOUT)(1-STOREY)
B2	YOUTH ACTIVITY CENTRE	121 m ² (ABOUT)	121 m ² (ABOUT)	6 m (ABOUT)(1-STOREY)
B3	ELDERLY ACTIVITY CENTRE, OFFICE	146 m ² (ABOUT)	146 m ² (ABOUT)	6 m (ABOUT)(1-STOREY)
B4	COVERED CORRIDOR	17 m ² (ABOUT)	17 m ² (ABOUT)	3 m (ABOUT)(1-STOREY)
B5	COVERED CORRIDOR	43 m ² (ABOUT)	43 m ² (ABOUT)	3 m (ABOUT)(1-STOREY)
B6	WASHROOM AND REFRESHMENT KIOSK	50 m ² (ABOUT)	50 m ² (ABOUT)	3 m (ABOUT)(1-STOREY)
TOTAL		389 m ² (ABOUT)	389 m ² (ABOUT)	



PARKING AND LOADING / UNLOADING PROVISIONS

NO. OF PRIVATE CAR PARKING SPACE	: 2
DIMENSION OF PARKING SPACE	: 5 m (L) x 2.5 m (W)
NO. OF L/U/L SPACE FOR LIGHT GOODS VEHICLE	: 1
DIMENSION OF L/U/L SPACE	: 7 m (L) x 3.5 m (W)
NO. OF L/U/L SPACE FOR LIGHT BUS	: 1
DIMENSION OF L/U/L SPACE	: 8 m (L) x 3 m (W)

LEGEND

	APPLICATION SITE
	STRUCTURE (ENCLOSED)
	STRUCTURE (NOT ENCLOSED)
	PARKING SPACE (PC)
	LOADING / UNLOADING SPACE (LGV)
	LOADING / UNLOADING SPACE (LB)
	INGRESS / EGRESS

PLANNING CONSULTANT



PROJECT

PROPOSED TEMPORARY PLACE OF RECREATION, SPORTS OR CULTURE WITH ANCILLARY FACILITIES FOR A PERIOD OF 5 YEARS

SITE LOCATION

LOTS 2063 AND 2064 IN D.D. 106 AND ADJOINING GOVERNMENT LAND, KAM TIN, YUEN LONG, NEW TERRITORIES

(FORMER SHEK WU SCHOOL)

SCALE

1:500 @ A4

DRAWN BY MN DATE 7.10.2024

REVISED BY DATE

APPROVED BY DATE

DWG. TITLE

LAYOUT PLAN

DWG NO. PLAN 4 150R 002

(摘錄自申請人於 15. 5. 2025 呈交的申請書)
(Extract from Applicant's
Submission of 15.5.2025)

參考編號
REFERENCE No.
A/YL-KTS/1076

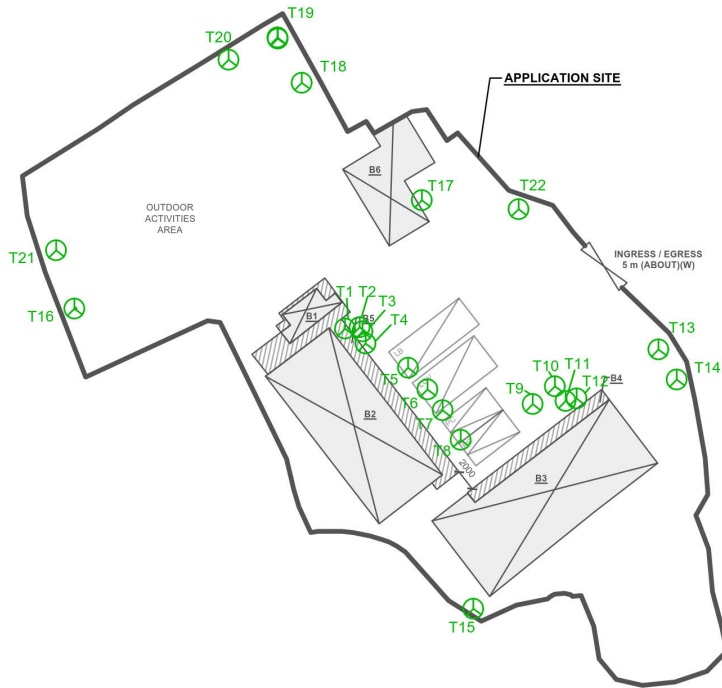
繪圖
DRAWING
A - 1

LANDSCAPE PROPOSAL

APPLICATION SITE AREA : 1,940 m² (ABOUT)

NO. OF EXISTING TREES : 22 (T1 TO T22)
 TREE SPECIES : *BOUGAINVILLEA SPECTABILIS* (T1, T4)
MACARANGA TANARIUS VAR. *TOMENTOSA* (T2, T3)
CINNAMOMUM CAMPHORA (T5, T9, T13)
CELTIS SINENSIS (T6, T8, T12)
ILEX ROTUNDA (T7, T17)
DELONIX REGIA (T10, T11, T14)
LOPHOSTEMON CONFERTUS (T15)
FICUS MICROCARPA (T16, T21)
DIMOCARPUS LONGAN (T18 TO T20)
LIGUSTRUM SINENSE (T22)

NO. OF TREES TO BE FELLED : 13 (T1 TO T12, T17)



LEGEND



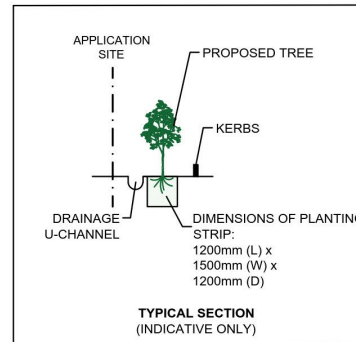
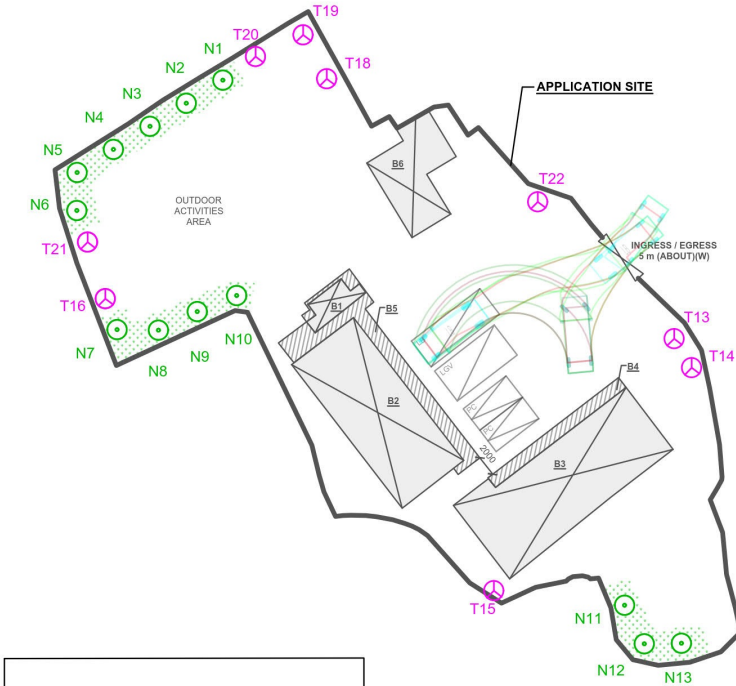
LANDSCAPE PROPOSAL

APPLICATION SITE AREA : 1,940 m² (ABOUT)
 COVERED AREA : 1,635 m² (ABOUT)
 UNCOVERED AREA : 953 m² (ABOUT)

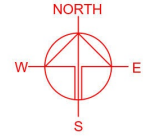
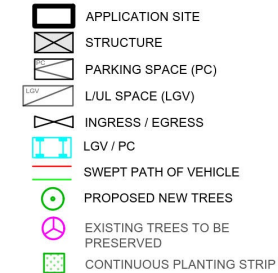
NO. OF TREES WILL BE PRESERVED : 9 (T13 TO T16, T18 TO T22)
 NO. OF NEW TREES WILL BE PLANTED : 13 (N1 TO N13)
 SPECIES OF NEW TREES : *POLYSPORA AXILLARIS*
 HEIGHT OF NEW TREES : NO LESS THAN 2.75 m
 SPACING OF NEW TREES : NOT LESS THAN 4 m
 DIMENSION OF PLANTING STRIP : 1.5 m (W) 1.2 m X (L) X 1.2 m (D)

NOTES:

- 1) THE APPLICANT WILL MAINTAIN TREES IN GOOD CONDITION DURING THE PLANNING APPROVAL PERIOD.
- 2) THE APPLICANT WILL REPLACE TREES WHICH ARE DYING OR DEAD DURING THE PLANNING APPROVAL PERIOD.
- 3) THE APPLICANT WILL PROVIDE ADEQUATE IRRIGATION FOR TREES.



LEGEND



PLANNING CONSULTANT



PROJECT

PROPOSED TEMPORARY PLACE OF RECREATION, SPORTS OR CULTURE WITH ANCILLARY FACILITIES FOR A PERIOD OF 5 YEARS

SITE LOCATION

LOTS 2063 AND 2064 IN D.D. 106 AND ADJOINING GOVERNMENT LAND, KAM TIN, YUEN LONG, NEW TERRITORIES

SCALE

1:600 @ A4

DRAWN BY DATE

LT 3.7.2025

REVISED BY DATE

APPROVED BY DATE

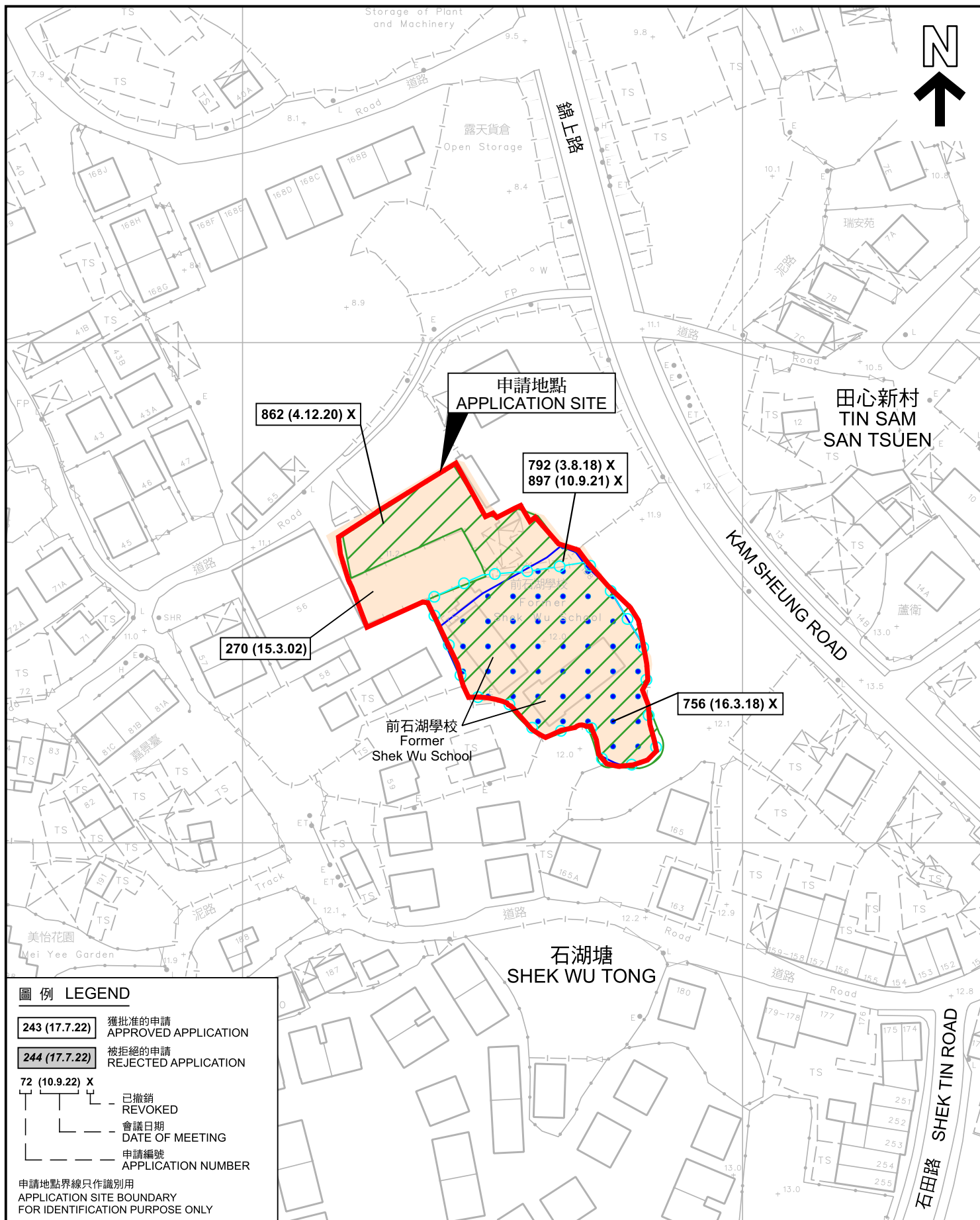
DWG. TITLE LANDSCAPE PROPOSAL

DWG NO. ANNEX I VER. 001

(摘錄自申請人於 9.7.2025 呈交的進一步資料)
 (Extract from Applicant's Further Information Submitted on 9.7.2025)

參考編號
 REFERENCE No.
 A/YL-KTS/1076

繪圖
 DRAWING
 A - 2



圖例 LEGEND

- 243 (17.7.22)** 獲批准的申請
APPROVED APPLICATION
- 244 (17.7.22)** 被拒絕的申請
REJECTED APPLICATION
- 72 (10.9.22) X**
已撤銷
REVOKED
- 會議日期
DATE OF MEETING
- 申請編號
APPLICATION NUMBER

申請地點界線只作識別用
APPLICATION SITE BOUNDARY
FOR IDENTIFICATION PURPOSE ONLY

先前申請圖 PREVIOUS APPLICATION PLAN

擬議臨時康體文娛場所連附屬設施(為期5年)

新界元朗錦田丈量約份第106約

地段第2063號及2064號和毗連政府土地

PROPOSED TEMPORARY PLACE OF RECREATION, SPORTS OR
CULTURE WITH ANCILLARY FACILITIES FOR A PERIOD OF 5 YEARS
LOTS 2063 AND 2064 IN D.D. 106 AND ADJOINING GOVERNMENT LAND,
KAM TIN, YUEN LONG, NEW TERRITORIES

SCALE 1 : 1 000 比例尺

米 20 0 20 40 米
METRES

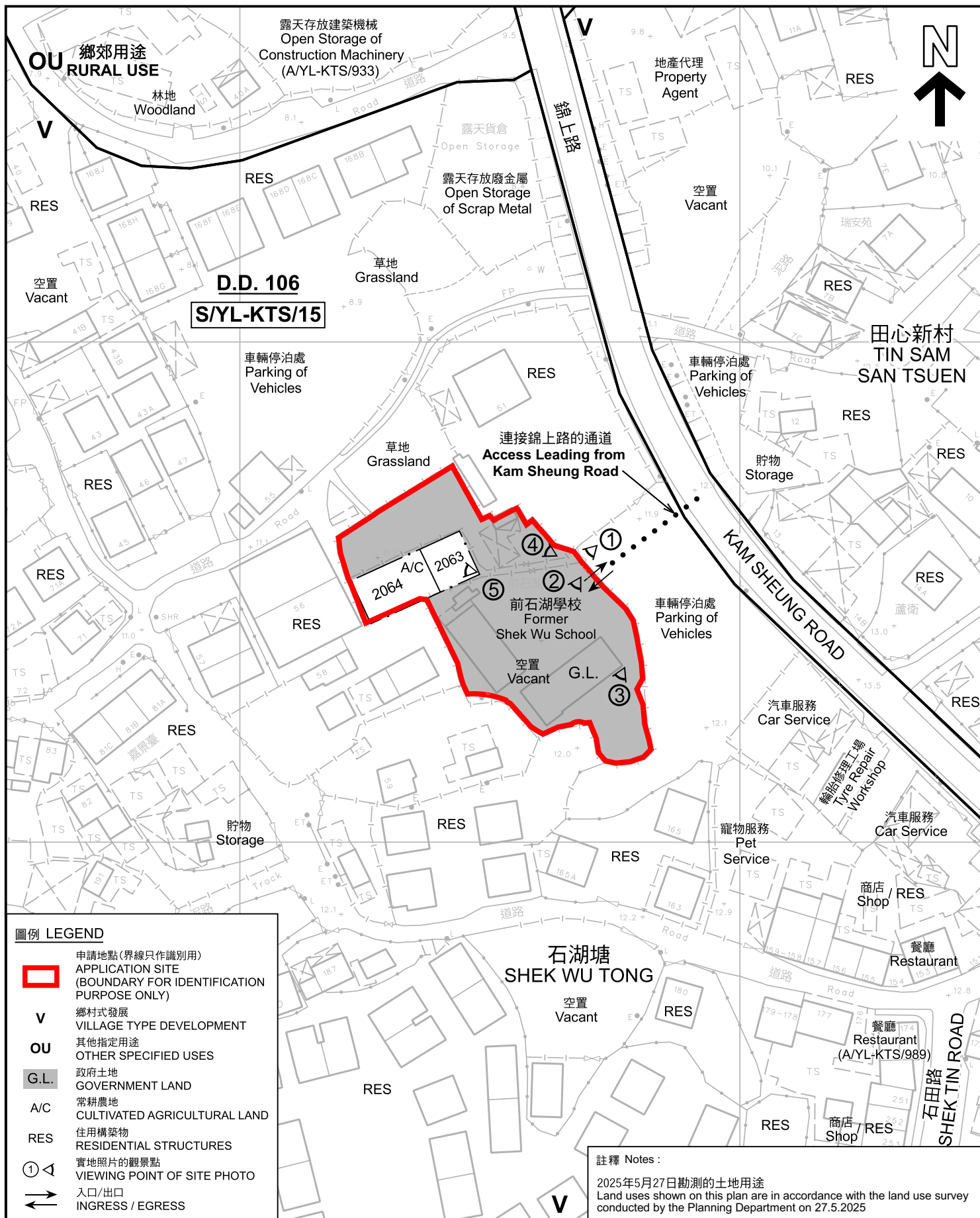
規劃署
PLANNING
DEPARTMENT



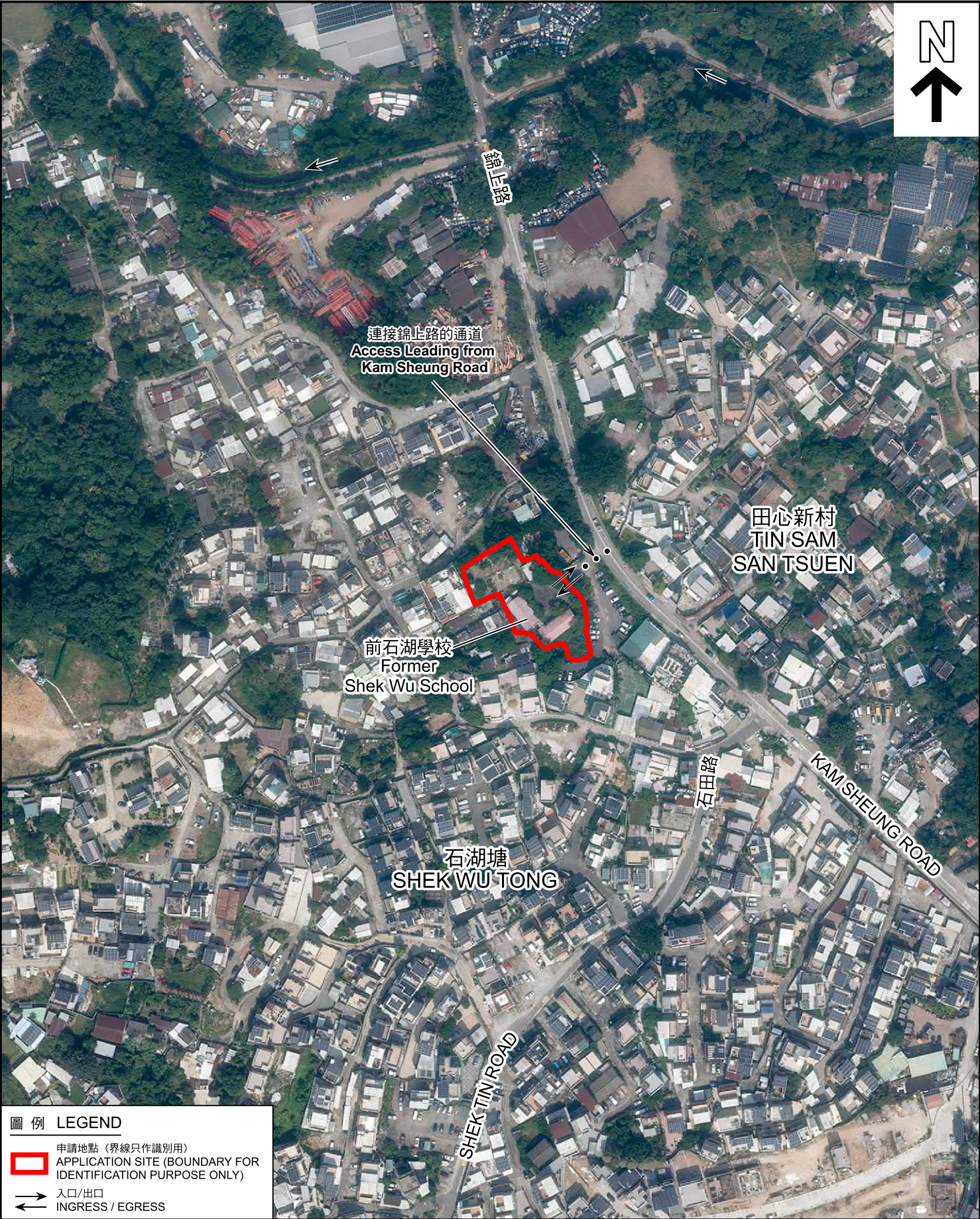
參考編號
REFERENCE No.
A/YL-KTS/1076

圖 PLAN
A-1b

本摘要圖於2025年7月24日擬備，
所根據的資料為測量圖編號
6-NE-17B 及 18A
EXTRACT PLAN PREPARED ON 24.7.2025
BASED ON SURVEY SHEETS No.
6-NE-17B & 18A



<p>本摘要圖於2025年8月27日擬備，所根據的資料為測量圖編號 6-NE-17B 及 18A</p> <p>EXTRACT PLAN PREPARED ON 27.8.2025 BASED ON SURVEY SHEETS No. 6-NE-17B & 18A</p>	<p>平面圖 SITE PLAN</p> <p>擬議臨時康體文娛場所連附屬設施(為期5年)</p> <p>新界元朗錦田丈量約份第106約</p> <p>地段第2063號及2064號和毗連政府土地</p> <p>PROPOSED TEMPORARY PLACE OF RECREATION, SPORTS OR CULTURE WITH ANCILLARY FACILITIES FOR A PERIOD OF 5 YEARS</p> <p>LOTS 2063 AND 2064 IN D.D. 106 AND ADJOINING GOVERNMENT LAND, KAM TIN, YUEN LONG, NEW TERRITORIES</p> <p>SCALE 1 : 1 000 比例尺</p> <p>米 METRES 20 0 20 40 米 METRES</p>	<p>規劃署 PLANNING DEPARTMENT</p> <p>參考編號 REFERENCE No. A/YL-KTS/1076</p> <p>圖 PLAN A-2</p>
----------------------------------------------------------------------------------------------------------------------------------------------	--------------------------------------------------------------------------------------------------------------------------------------------------------------------------------------------------------------------------------------------------------------------------------------------------------------------------------------------------------------------------------------------------	------------------------------------------------------------------------------------------



圖例 LEGEND


 申請地點 (界線只作識別用)
APPLICATION SITE (BOUNDARY FOR IDENTIFICATION PURPOSE ONLY)

 入口/出口
INGRESS / EGRESS

本摘要圖於2025年7月24日擬備，
所根據的資料為地政總署於2024年10月23日
拍得的航攝照片編號 E234895C 及 E234896C
EXTRACT PLAN PREPARED ON 24.7.2025
BASED ON AERIAL PHOTOS No.
E234895C & E234896C TAKEN ON 23.10.2024
BY LANDS DEPARTMENT

航攝照片 AERIAL PHOTO

擬議臨時康體文娛場所連附屬設施(為期5年)
新界元朗錦田丈量約份第106約
地段第2063號及2064號和毗連政府土地
PROPOSED TEMPORARY PLACE OF RECREATION, SPORTS OR
CULTURE WITH ANCILLARY FACILITIES FOR A PERIOD OF 5 YEARS
LOTS 2063 AND 2064 IN D.D. 106 AND ADJOINING GOVERNMENT LAND,
KAM TIN, YUEN LONG, NEW TERRITORIES

規劃署 PLANNING DEPARTMENT		
參考編號 REFERENCE No. A/YL-KTS/1076	圖 PLAN A-3	



申請地點界線只作識別用 APPLICATION SITE BOUNDARY FOR IDENTIFICATION PURPOSE ONLY

實地照片 SITE PHOTOS

本圖於2025年8月26日擬備，所根據的資料為攝於2025年8月19日的實地照片
PLAN PREPARED ON 26.8.2025
BASED ON SITE PHOTOS
TAKEN ON 19.8.2025

擬議臨時康體文娛場所連附屬設施(為期5年)
新界元朗錦田丈量約份第106約
地段第2063號及2064號和毗連政府土地
PROPOSED TEMPORARY PLACE OF RECREATION, SPORTS OR
CULTURE WITH ANCILLARY FACILITIES FOR A PERIOD OF 5 YEARS
LOTS 2063 AND 2064 IN D.D. 106 AND ADJOINING GOVERNMENT LAND,
KAM TIN, YUEN LONG, NEW TERRITORIES

規劃署
PLANNING
DEPARTMENT



參考編號
REFERENCE No.
A/YL-KTS/1076

圖 PLAN
A-4a



申請地點界線只作識別用 APPLICATION SITE BOUNDARY FOR IDENTIFICATION PURPOSE ONLY

實地照片 SITE PHOTOS

本圖於2025年8月26日擬備，所根據的資料為攝於2025年8月19日的實地照片
PLAN PREPARED ON 26.8.2025
BASED ON SITE PHOTOS
TAKEN ON 19.8.2025

擬議臨時康體文娛場所連附屬設施(為期5年)
新界元朗錦田丈量約份第106約
地段第2063號及2064號和毗連政府土地
PROPOSED TEMPORARY PLACE OF RECREATION, SPORTS OR
CULTURE WITH ANCILLARY FACILITIES FOR A PERIOD OF 5 YEARS
LOTS 2063 AND 2064 IN D.D. 106 AND ADJOINING GOVERNMENT LAND,
KAM TIN, YUEN LONG, NEW TERRITORIES

規劃署
PLANNING
DEPARTMENT



參考編號
REFERENCE No.
A/YL-KTS/1076

圖 PLAN
A-4b