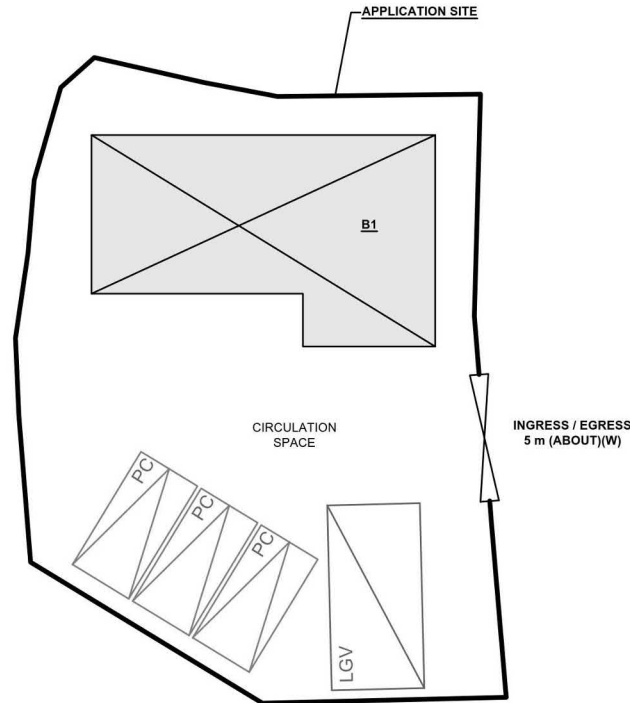
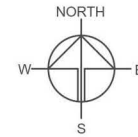


DEVELOPMENT PARAMETERS

APPLICATION SITE AREA	: 380 m	(ABOUT)
COVERED AREA	: 88 m ²	(ABOUT)
UNCOVERED AREA	: 292 m ²	(ABOUT)
PLOT RATIO	: 0.46	(ABOUT)
SITE COVERAGE	: 23%	(ABOUT)
NO. OF STRUCTURE	: 1	
DOMESTIC GFA	: NOT APPLICABLE	
NON-DOMESTIC GFA	: 176 m ²	(ABOUT)
TOTAL GFA	: 176 m ²	(ABOUT)
BUILDING HEIGHT	: 7 m	(ABOUT)
NO. OF STOREY	: 2	

STRUCTURE	USE	COVERED AREA	GROSS FLOOR AREA	BUILDING HEIGHT
B1	SHOP AND SERVICES ANCILLARY OFFICE	88m ² (ABOUT)	176m ² (ABOUT)	7m (ABOUT)(2-STOREY)
TOTAL		88m² (ABOUT)	176m² (ABOUT)	



PARKING PROVISIONS

NO. OF PRIVATE CAR PARKING SPACE	: 3
DIMENSION OF PARKING SPACE	: 2.5 m (W) X 5 m (L)

LOADING / UNLOADING (L/U) PROVISIONS

NO. OF L/U SPACE FOR LIGHT GOODS VEHICLE	: 3
DIMENSION OF PARKING SPACE	: 3.5 m (W) X 7 m (L)

*SITE BOUNDARY FOR IDENTIFICATION PURPOSE ONLY

LEGEND

- APPLICATION SITE
- STRUCTURE
- PARKING SPACE (PC)
- L/U SPACE (LGV)
- INGRESS / EGRESS

PLANNING CONSULTANT



PROJECT

PROPOSED TEMPORARY SHOP AND SERVICES WITH ANCILLARY FACILITIES AND ASSOCIATED FILLING OF LAND FOR A PERIOD OF 5 YEARS

SITE LOCATION

LOT 2882 S.B RP IN D.D. 104, MAI PO, YUEN LONG, NEW TERRITORIES

SCALE

1:250 @ A1

DRAWN BY

MIN

DATE

11.7.2025

REVISED BY

DATE

APPROVED BY

DATE

DWG. TITLE

LAYOUT PLAN

DWG. NO.

PLAN 4

VER.

001

(摘錄自申請人於 8. 7. 2025 呈交的申請書)
(Extract from Applicant's
Submission of 8.7.2025)

參考編號
REFERENCE No.
A/YL-MP/393

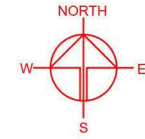
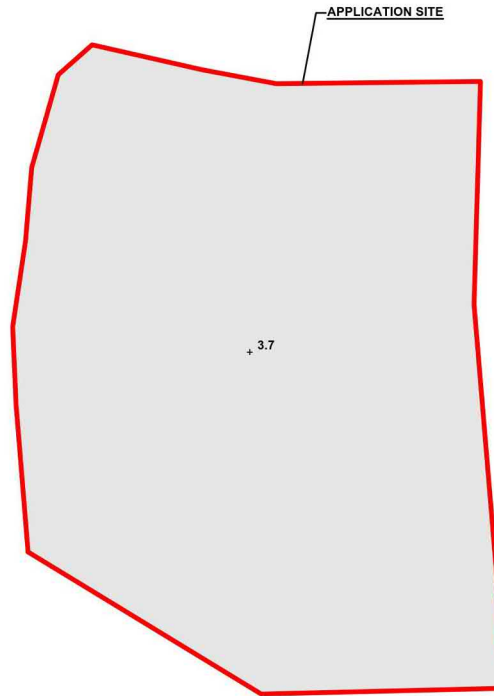
繪圖
DRAWING
A - 1

EXISTING FILLING OF LAND AREA

APPLICATION SITE AREA	: 380 m ²	(ABOUT)
COVERED BY STRUCTURE	: 88 m ²	(ABOUT)
EXISTING FILLED AREA	: 380 m ²	(ABOUT)
DEPTH OF LAND FILLING	: NOT MORE THAN 0.2 m	
PROPOSED SITE LEVELS	: +3.7 mPD	(ABOUT)
MATERIAL OF LAND FILLING	: CONCRETE	
USE	: SITE FORMATION OF STRUCTURES, AND CIRCULATION SPACE	

THE APPLICATION SITE HAS ALREADY BEEN HARD PAVED.

NO FURTHER FILLING OF LAND WILL BE CARRIED OUT DURING THE PLANNING APPROVAL PERIOD.



PLANNING CONSULTANT



PROJECT

PROPOSED TEMPORARY SHOP AND SERVICES WITH ANCILLARY FACILITIES AND ASSOCIATED FILLING OF LAND FOR A PERIOD OF 5 YEARS

SITE LOCATION

LOT 2882 S.B RP IN D.D. 104, MAI PO, YUEN LONG, NEW TERRITORIES

SCALE

1:250 @ A4

DRAWN BY	DATE
MN	30.5.2025
REVISED BY	DATE
APPROVED BY	DATE

DWG. TITLE
FILLING OF LAND

DWG NO.	VER.
PLAN 5	001

LEGEND

- APPLICATION SITE
- EXISTING FILLED AREA
- +3.7 EXISTING FILLED AREA

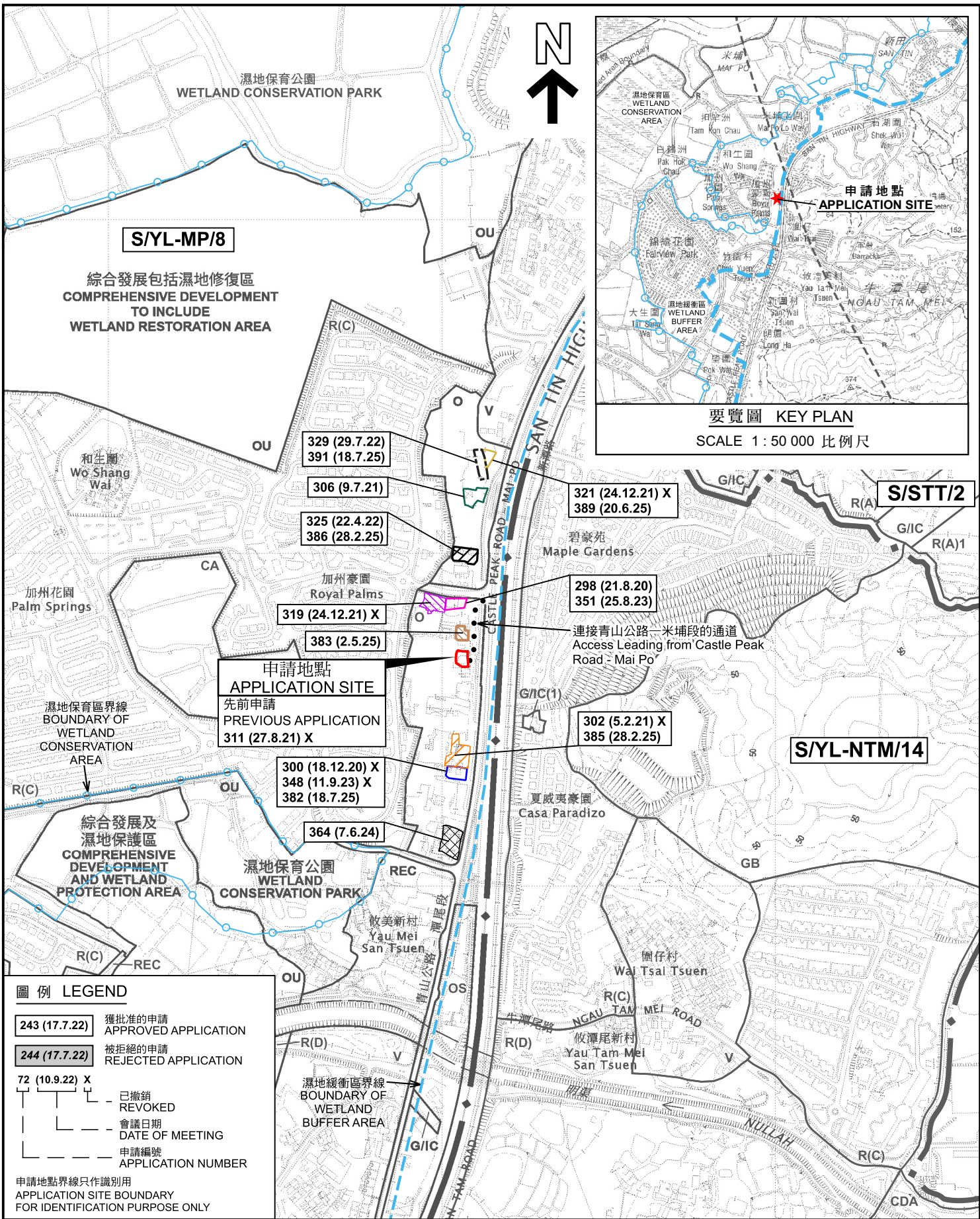
SITE LEVELS ARE FOR REFERENCE ONLY.

*SITE BOUNDARY FOR IDENTIFICATION PURPOSE ONLY

(摘錄自申請人於 8. 7. 2025 提交的申請書)
(Extract from Applicant's
Submission of 8.7.2025)

參考編號
REFERENCE No.
A/YL-MP/393

繪圖
DRAWING
A - 2



本摘要圖於2025年8月21日擬備，
所根據的資料為於2024年9月17日核准的分
區計劃大綱圖編號S/YL-MP/8
EXTRACT PLAN PREPARED ON 21.8.2025
BASED ON OUTLINE ZONING PLAN No.
S/YL-MP/8 APPROVED ON 17.9.2024

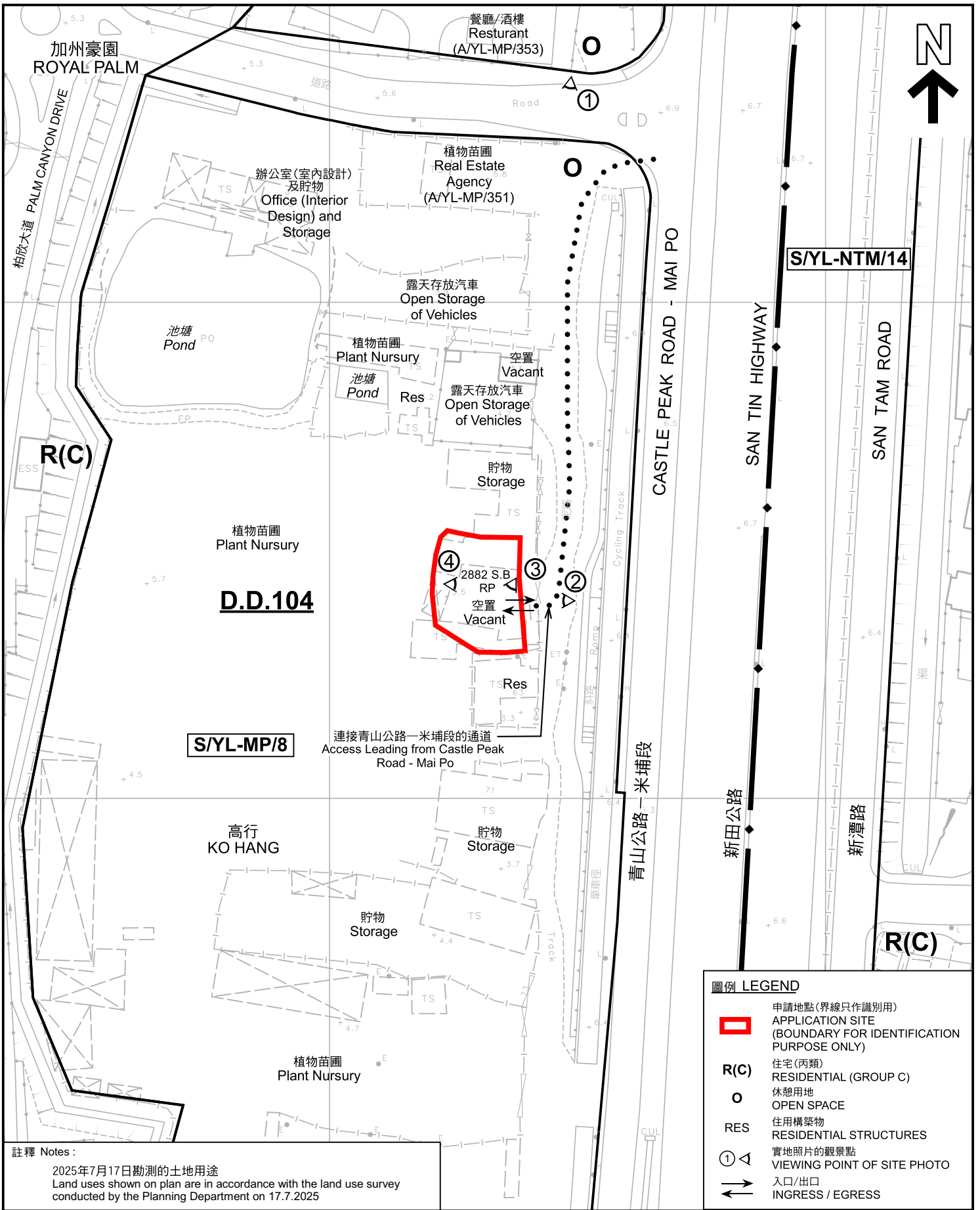
擬議臨時商店及服務行業連附屬設施和相關的填土工程（為期5年）
元朗米埔丈量約份第104約地段第2882號B分段餘段
PROPOSED TEMPORARY SHOP AND SERVICES WITH
ANCILLARY FACILITIES FOR A PERIOD OF 3 YEARS
LOT 2882 S.B RP IN D.D. 104, MAI PO, YUEN LONG

SCALE 1 : 7 500 比例尺
METRES 100 0 100 200 300 METRES

規劃署
PLANNING
DEPARTMENT

參考編號
REFERENCE No.
A/YL-MP/393

圖 PLAN
A-1



註釋 Notes :
 2025年7月17日勘測的土地用途
 Land uses shown on plan are in accordance with the land use survey conducted by the Planning Department on 17.7.2025

圖例 LEGEND

- 申請地點(界線只作識別用)
APPLICATION SITE (BOUNDARY FOR IDENTIFICATION PURPOSE ONLY)
- R(C)** 住宅(丙類)
RESIDENTIAL (GROUP C)
- 休憩用地
OPEN SPACE
- RES** 住用構築物
RESIDENTIAL STRUCTURES
- 實地照片的觀景點
VIEWING POINT OF SITE PHOTO
- 入口/出口
INGRESS / EGRESS

本摘要圖於2025年8月6日擬備，
 所根據的資料為測量圖編號
 2-SE-21B、12C、16B和17A
 EXTRACT PLAN PREPARED ON 6.8.2025
 BASED ON SURVEY SHEETS No.
 2-SE-21B, 12C, 16B AND 17A

平面圖 SITE PLAN

擬議臨時商店及服務行業連附屬設施和相關的填土工程 (為期5年)
 元朗米埔丈量約份第104約地段第2882號B分段餘段
 PROPOSED TEMPORARY SHOP AND SERVICES WITH
 ANCILLARY FACILITIES FOR A PERIOD OF 3 YEARS
 LOT 2882 S.B RP IN D.D. 104, MAI PO, YUEN LONG

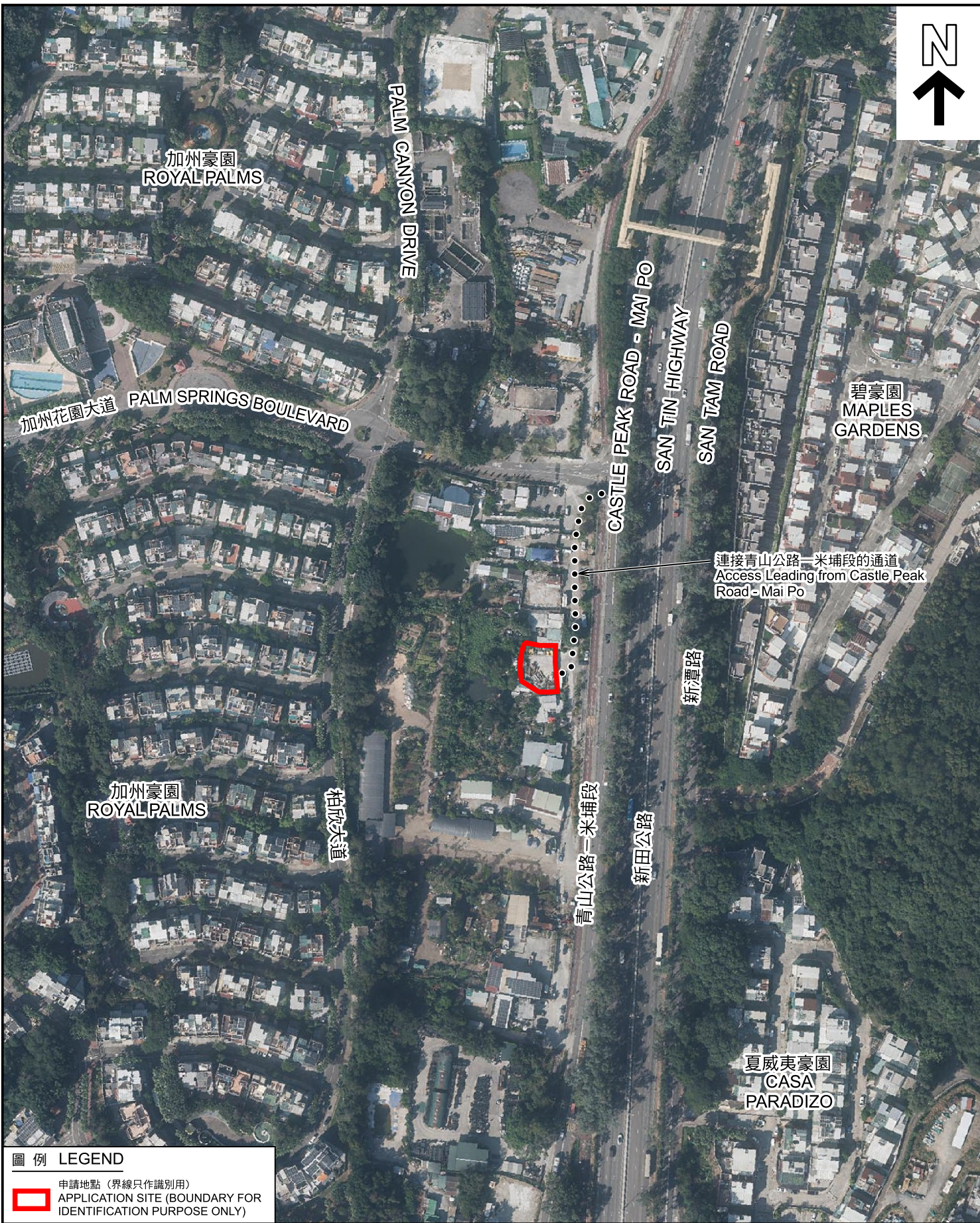
SCALE 1 : 1 000 比例尺

米 METRES 20 0 20 40 米 METRES

**規劃署
 PLANNING
 DEPARTMENT**

參考編號
 REFERENCE No.
A/YL-MP/393

圖 PLAN
A-2



圖例 LEGEND



申請地點 (界線只作識別用)
APPLICATION SITE (BOUNDARY FOR IDENTIFICATION PURPOSE ONLY)

航攝照片 AERIAL PHOTO

擬議臨時商店及服務行業連附屬設施和相關的填土工程 (為期5年)
元朗米埔丈量約份第104約地段第2882號B分段餘段
PROPOSED TEMPORARY SHOP AND SERVICES WITH ANCILLARY FACILITIES FOR A PERIOD OF 3 YEARS
LOT 2882 S.B RP IN D.D. 104, MAI PO, YUEN LONG

規劃署
PLANNING
DEPARTMENT



參考編號
REFERENCE No.
AYL-MP/393

圖 PLAN
A-3

本摘要圖於2025年8月6日擬備，
所根據的資料為地政總署於2024年8月11日
拍得的航攝照片編號E219313C
EXTRACT PLAN PREPARED ON 6.8.2025
BASED ON AERIAL PHOTO No.
E219313C TAKEN ON 11.8.2024
BY LANDS DEPARTMENT



申請地點界線只作識別用 APPLICATION SITE BOUNDARY FOR IDENTIFICATION PURPOSE ONLY

實地照片 SITE PHOTOS

本圖於2025年8月6日擬備，所根據的資料為攝於2025年7月17日的實地照片
PLAN PREPARED ON 6.8.2025
BASED ON SITE PHOTOS
TAKEN ON 17.7.2025

擬議臨時商店及服務行業連附屬設施和相關的填土工程（為期5年）
元朗米埔丈量約份第104約地段第2882號B分段餘段
PROPOSED TEMPORARY SHOP AND SERVICES WITH
ANCILLARY FACILITIES FOR A PERIOD OF 3 YEARS
LOT 2882 S.B RP IN D.D. 104, MAI PO, YUEN LONG

規劃署
PLANNING
DEPARTMENT



參考編號
REFERENCE No.
A/YL-MP/393

圖 PLAN
A-4