

(摘錄自申請人於 2.1.2025 呈交的申請書)
(Extract from Applicant's
Submission of 2.1.2025)

參考編號
REFERENCE No.
A/YL/324

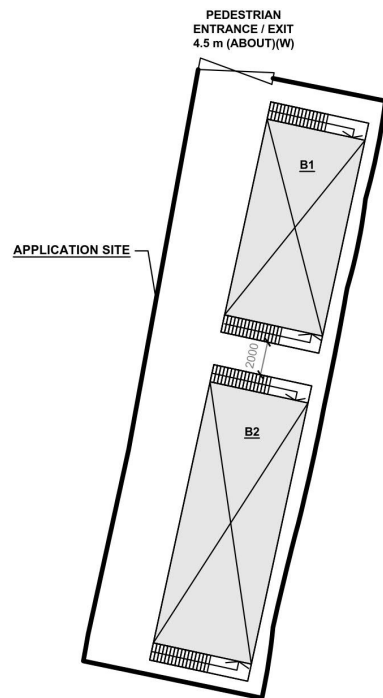
繪圖 DRAWING
A-1

DEVELOPMENT PARAMETERS

APPLICATION SITE AREA	: 404 m ²	(ABOUT)
COVERED AREA	: 192 m ²	(ABOUT)
UNCOVERED AREA	: 212 m ²	(ABOUT)
PLOT RATIO	: 0.89	(ABOUT)
SITE COVERAGE	: 48 %	(ABOUT)

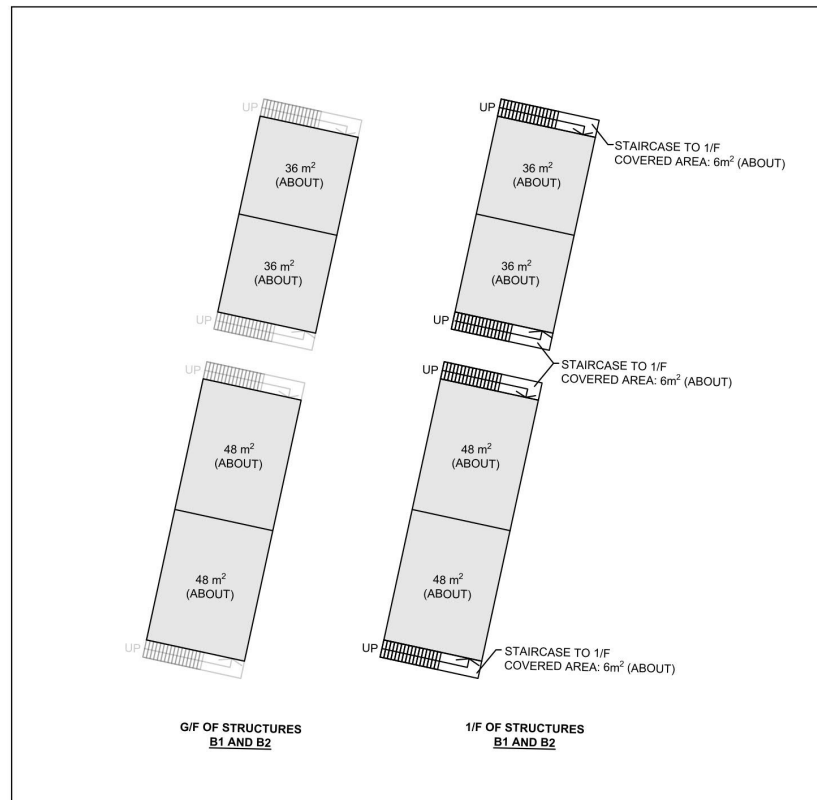
NO. OF STRUCTURE	: 2
DOMESTIC GFA	: NOT APPLICABLE
NON-DOMESTIC GFA	: 360 m ² (ABOUT)
TOTAL GFA	: 360 m ² (ABOUT)

BUILDING HEIGHT	: 7 m	(ABOUT)
NO. OF STOREY	: 2	



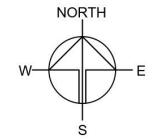
STRUCTURE	USE	COVERED AREA	GROSS FLOOR AREA	BUILDING HEIGHT
B1 (G/F) (1/F)	SHOP AND SERVICES, OFFICE AND WASHROOM SHOP AND SERVICES, OFFICE AND WASHROOM	84* m ² (ABOUT)	84 m ² (ABOUT) 72 m ² (ABOUT)	7 m (ABOUT)(2-STOREY)
B2 (G/F) (1/F)	SHOP AND SERVICES, OFFICE AND WASHROOM SHOP AND SERVICES, OFFICE AND WASHROOM	108* m ² (ABOUT)	108 m ² (ABOUT) 96 m ² (ABOUT)	7 m (ABOUT)(2-STOREY)
TOTAL		192 m ² (ABOUT)	360 m ² (ABOUT)	

*BREAKDOWN OF COVERED AREA OF STRUCTURE B1 - 72 m² (INTERIOR) + 6 m² (STAIRCASE) + 6 m² (STAIRCASE) = 84 m²
*BREAKDOWN OF COVERED AREA OF STRUCTURE B2 - 96 m² (INTERIOR) + 6 m² (STAIRCASE) + 6 m² (STAIRCASE) = 108 m²



LEGEND

	APPLICATION SITE
	STRUCTURE
	PEDESTRIAN ENTRANCE / EXIT



PLANNING CONSULTANT



PROJECT

PROPOSED TEMPORARY SHOP AND SERVICES WITH ANCILLARY FACILITIES FOR A PERIOD OF 6 YEARS

SITE LOCATION

LOT 234 RP IN D.D. 115, TUNG TAU TSUEN, YUEN LONG, NEW TERRITORIES

SCALE

1:400 @ A1

DRAWN BY MN	DATE 10.12.2024
CHECKED BY	DATE
APPROVED BY	DATE

DWG. TITLE
LAYOUT PLAN

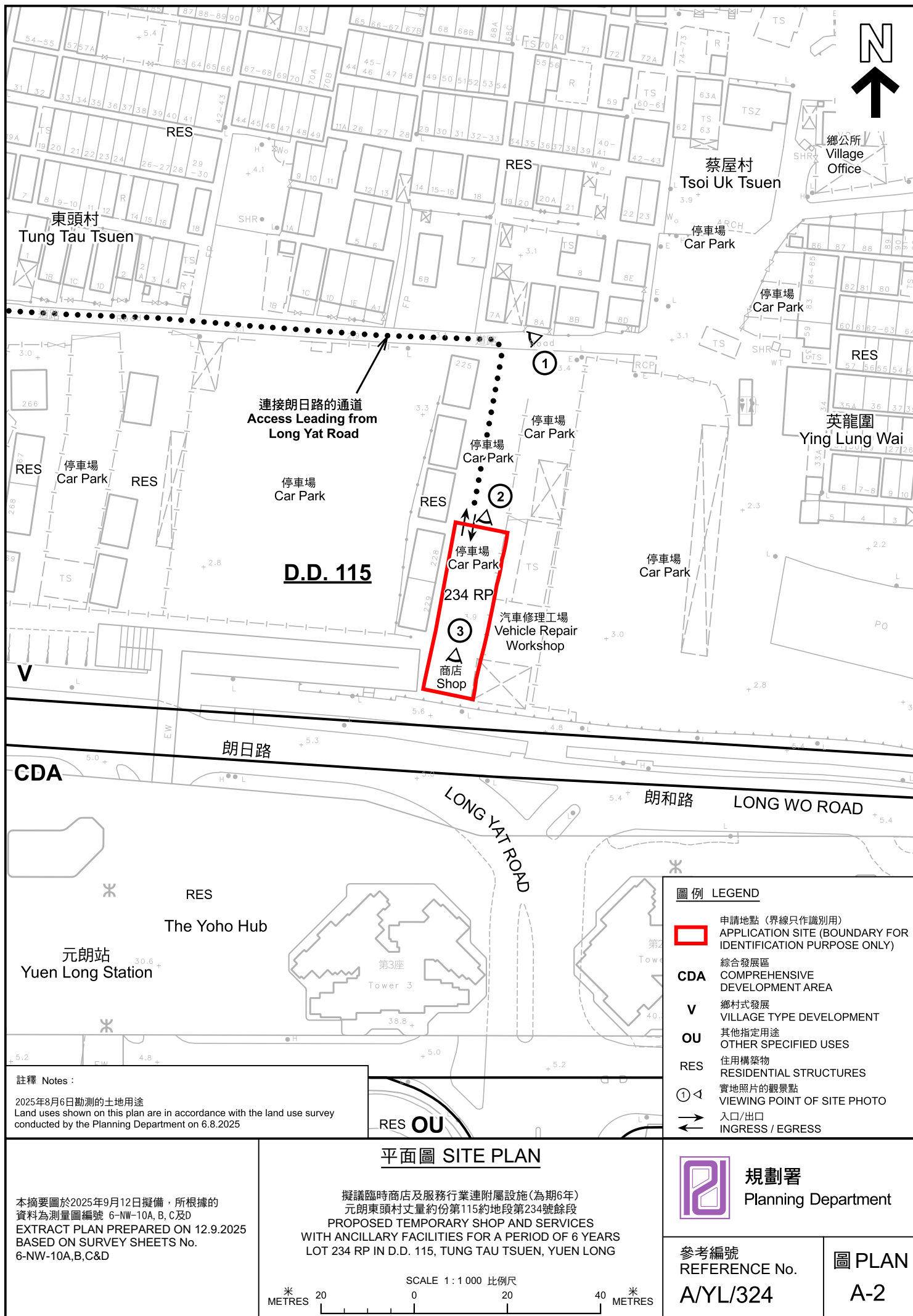
DWG NO. PLAN 4	VER. 001
-------------------	-------------

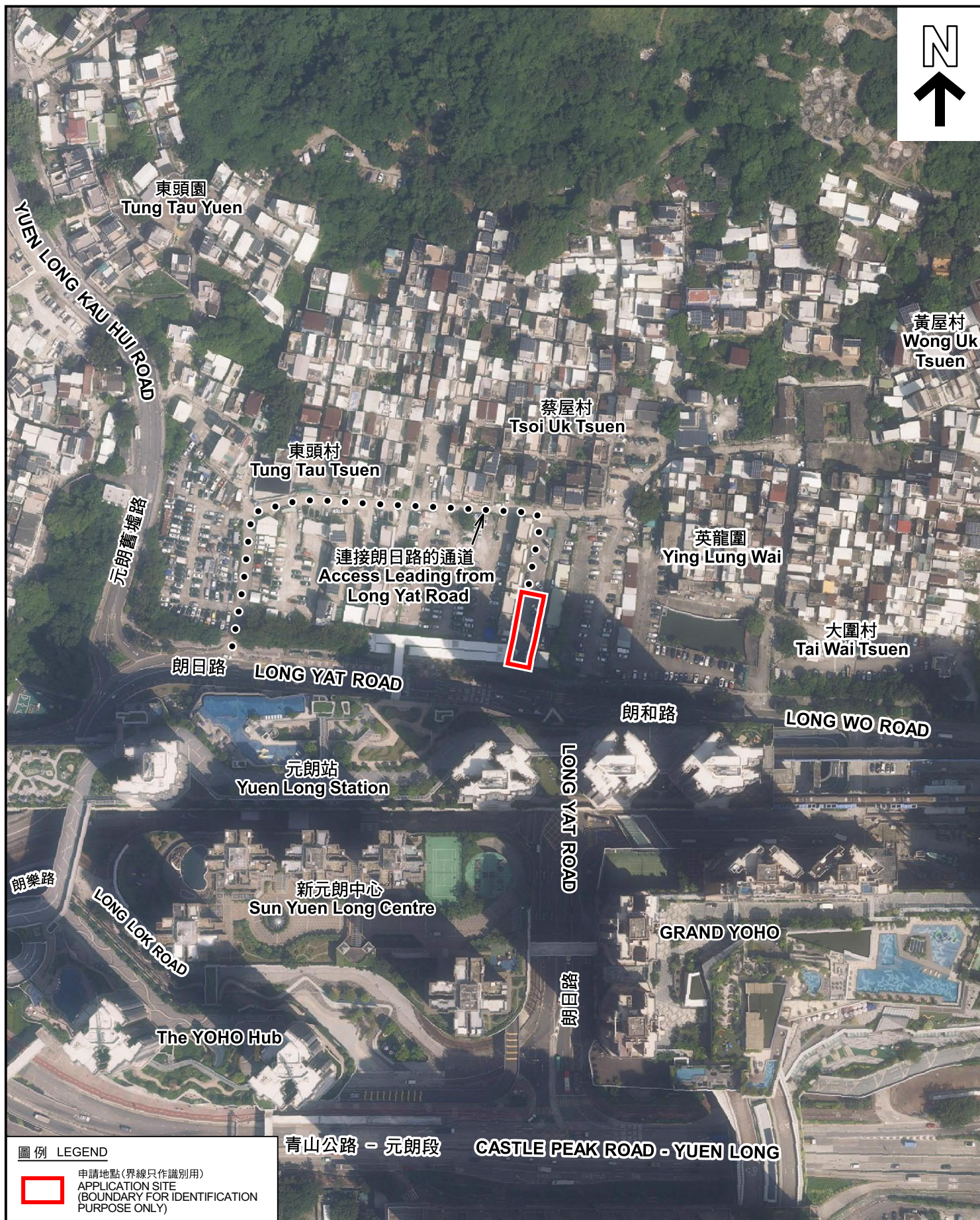
NO PARKING AND LOADING/UNLOADING SPACE IS PROVIDED AT THE SITE.

(摘錄自申請人於 2.1.2025 呈交的申請書)
(Extract from Applicant's
Submission of 2.1.2025)

參考編號
REFERENCE No.
A/YL/324

繪圖 DRAWING
A-2





圖例 LEGEND

 申請地點(界線只作識別用)
APPLICATION SITE
(BOUNDARY FOR IDENTIFICATION
PURPOSE ONLY)

本摘要圖於2025年9月12日擬備，所根據
的資料為地政總署於2024年10月10日拍得
的航攝照片編號 E229813C
EXTRACT PLAN PREPARED ON 12.9.2025
BASED ON AERIAL PHOTO No.
E229813C TAKEN ON 10.10.2024
BY LANDS DEPARTMENT

航攝照片 AERIAL PHOTO

擬議臨時商店及服務行業連附屬設施(為期6年)
元朗東頭村丈量約份第115約地段第234號餘段
PROPOSED TEMPORARY SHOP AND SERVICES
WITH ANCILLARY FACILITIES FOR A PERIOD OF 6 YEARS
LOT 234 RP IN D.D. 115, TUNG TAU TSUEN, YUEN LONG



規劃署
Planning Department

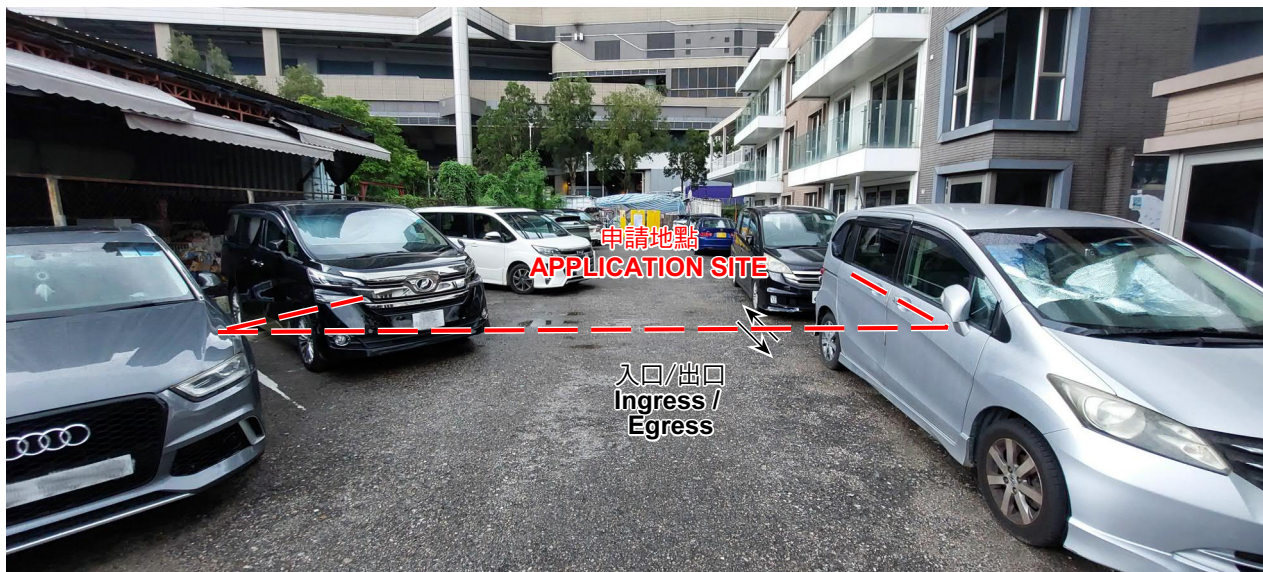
參考編號
REFERENCE No.
A/YL/324

圖 PLAN
A-3

1



2



3



申請地點界線只作識別用 APPLICATION SITE BOUNDARY FOR IDENTIFICATION PURPOSE ONLY

實地照片 SITE PHOTOS

本圖於2025年9月12日擬備，所根據的資料為攝於2025年8月6日的實地照片
PLAN PREPARED ON 12.9.2025
BASED ON SITE PHOTOS
TAKEN ON 6.8.2025

擬議臨時商店及服務行業連附屬設施(為期6年)
元朗東頭村丈量約份第115約地段第234號餘段
PROPOSED TEMPORARY SHOP AND SERVICES
WITH ANCILLARY FACILITIES FOR A PERIOD OF 6 YEARS
LOT 234 RP IN D.D. 115, TUNG TAU TSUEN, YUEN LONG



規劃署
Planning Department

參考編號
REFERENCE No.
A/YL/324

圖 PLAN
A-4